

Fig. II -2-13(1) Apparent resistivity plane map for N=2

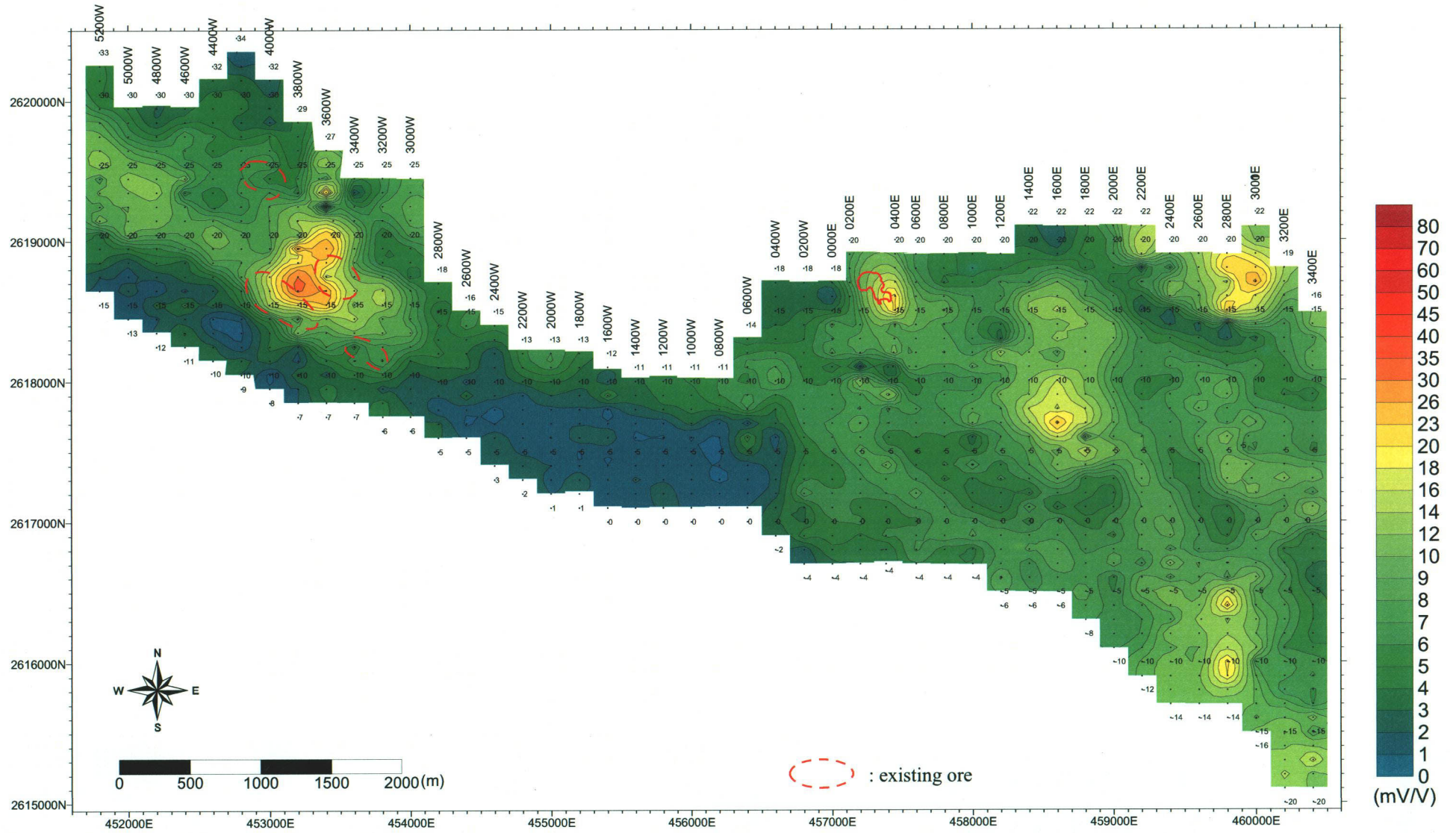


Fig. II -2-13(2) Chargeability plane map for N=2

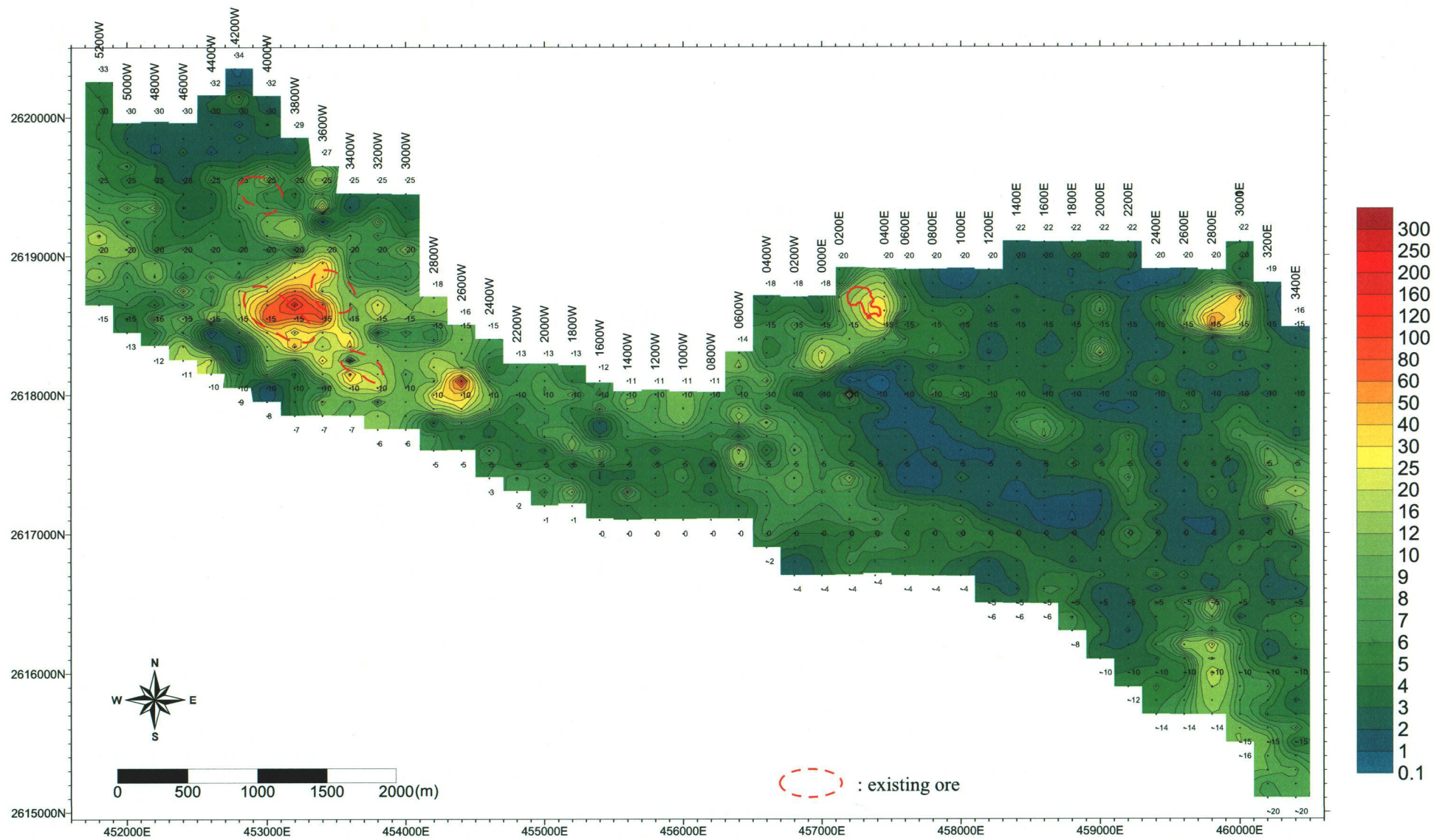


Fig. II -2-13(3) Metal factor plane map for N=2

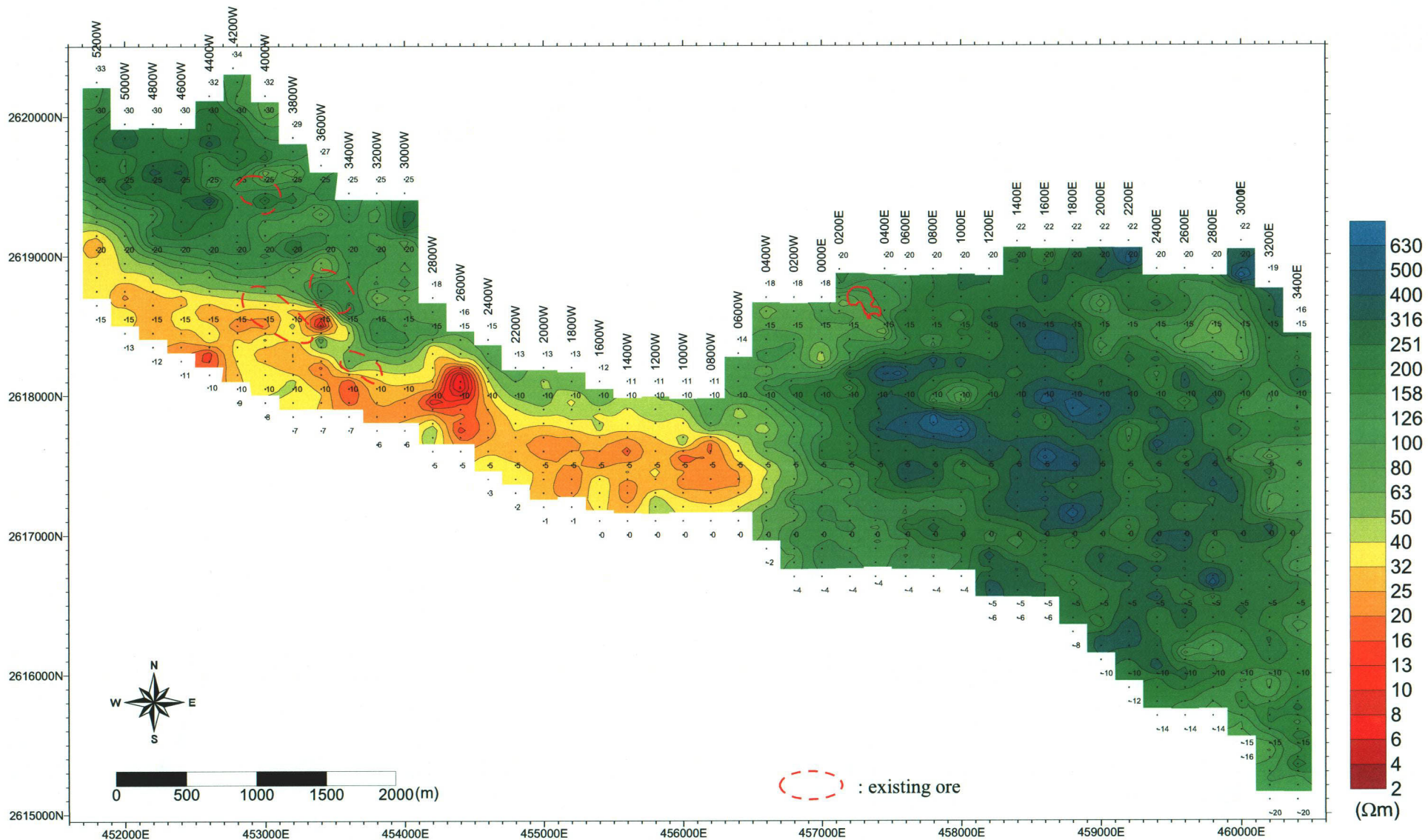


Fig. II -2-14(1) Apparent resistivity plane map for N=3

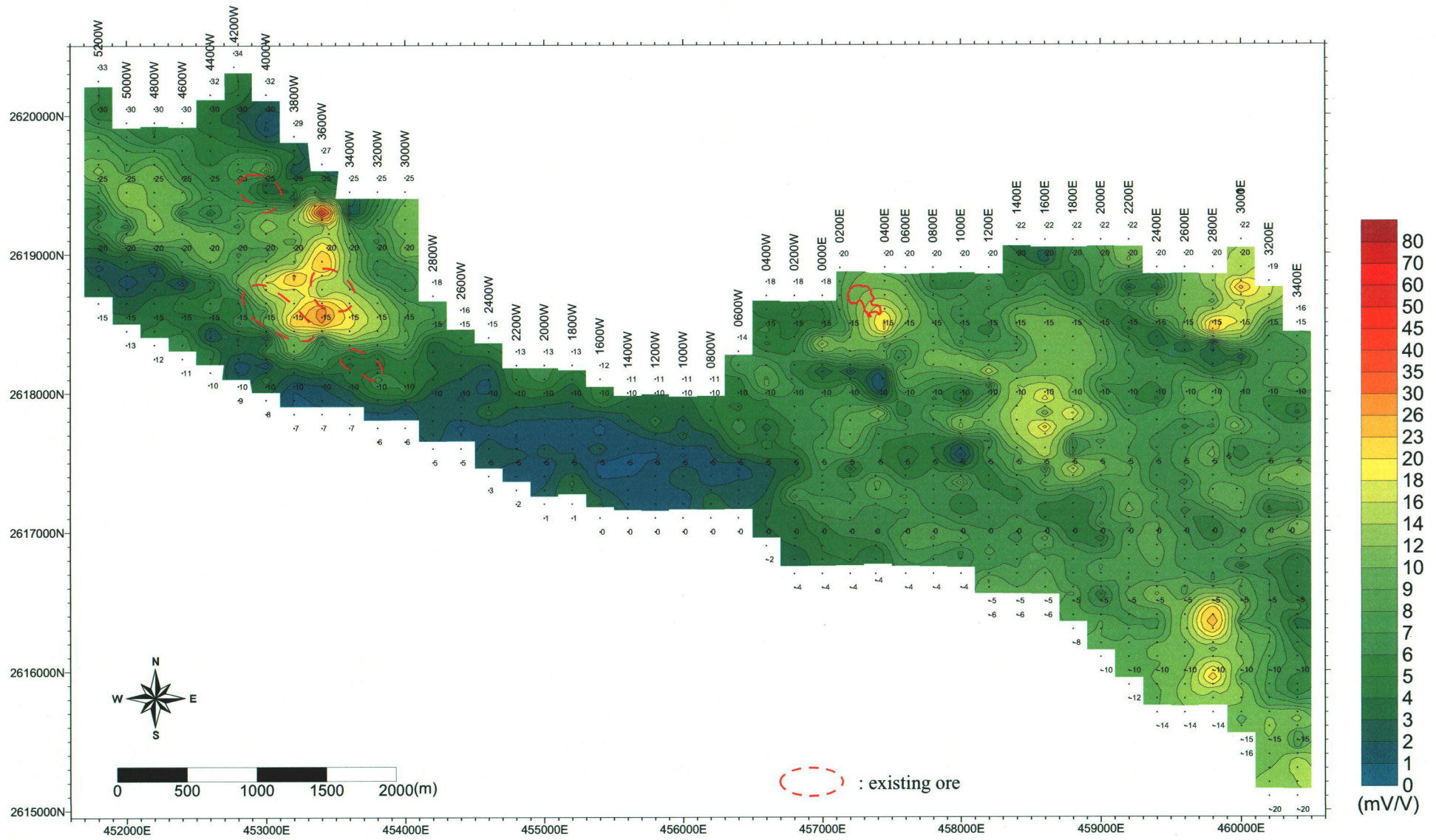


Fig. II -2-14(2) Chargeability plane map for N=3

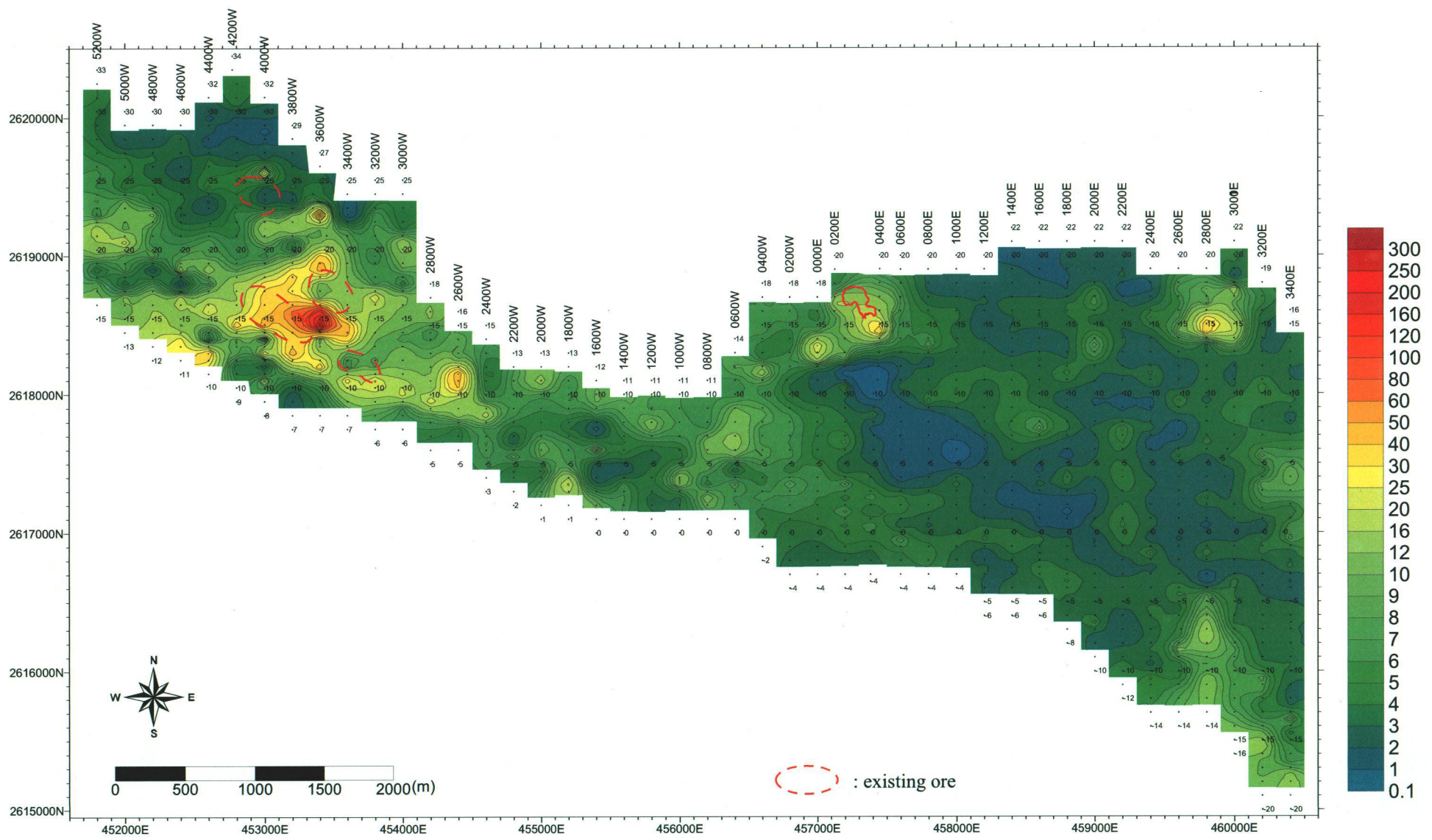


Fig. II -2-14(3) Metal factor plane map for N=3

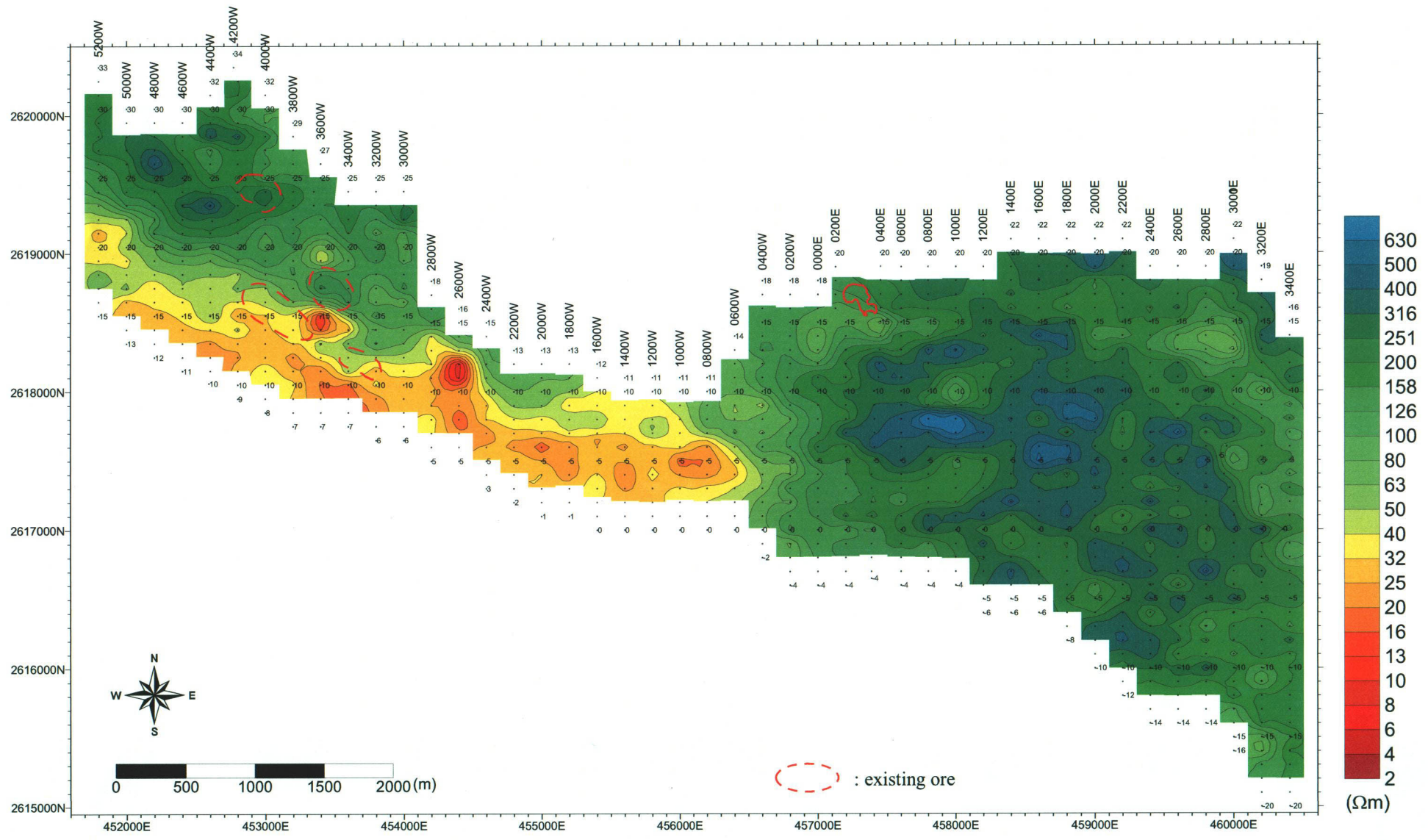


Fig. II -2-15(1) Apparent resistivity plane map for N=4

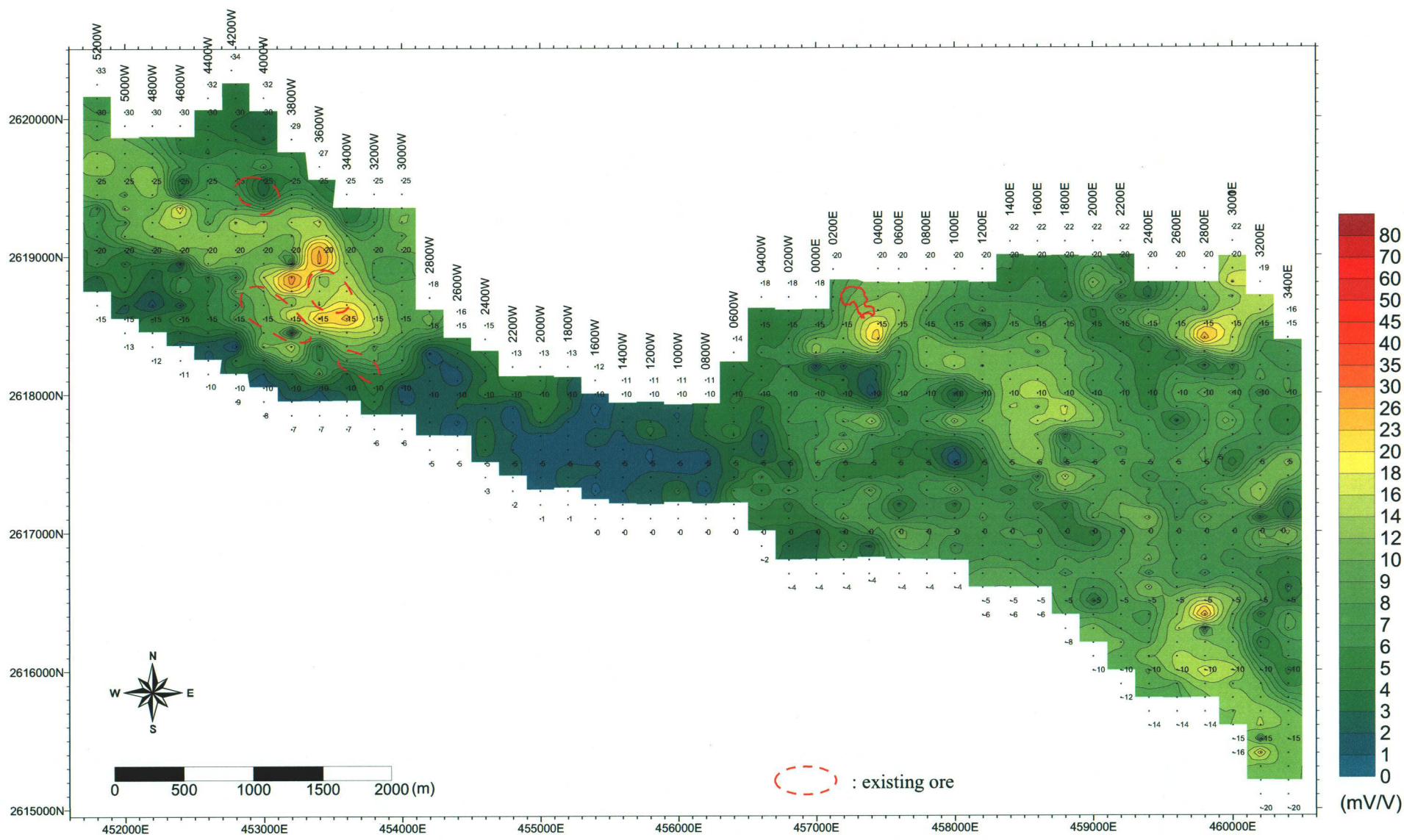


Fig. II -2-15(2) Chargeability plane map for N=4



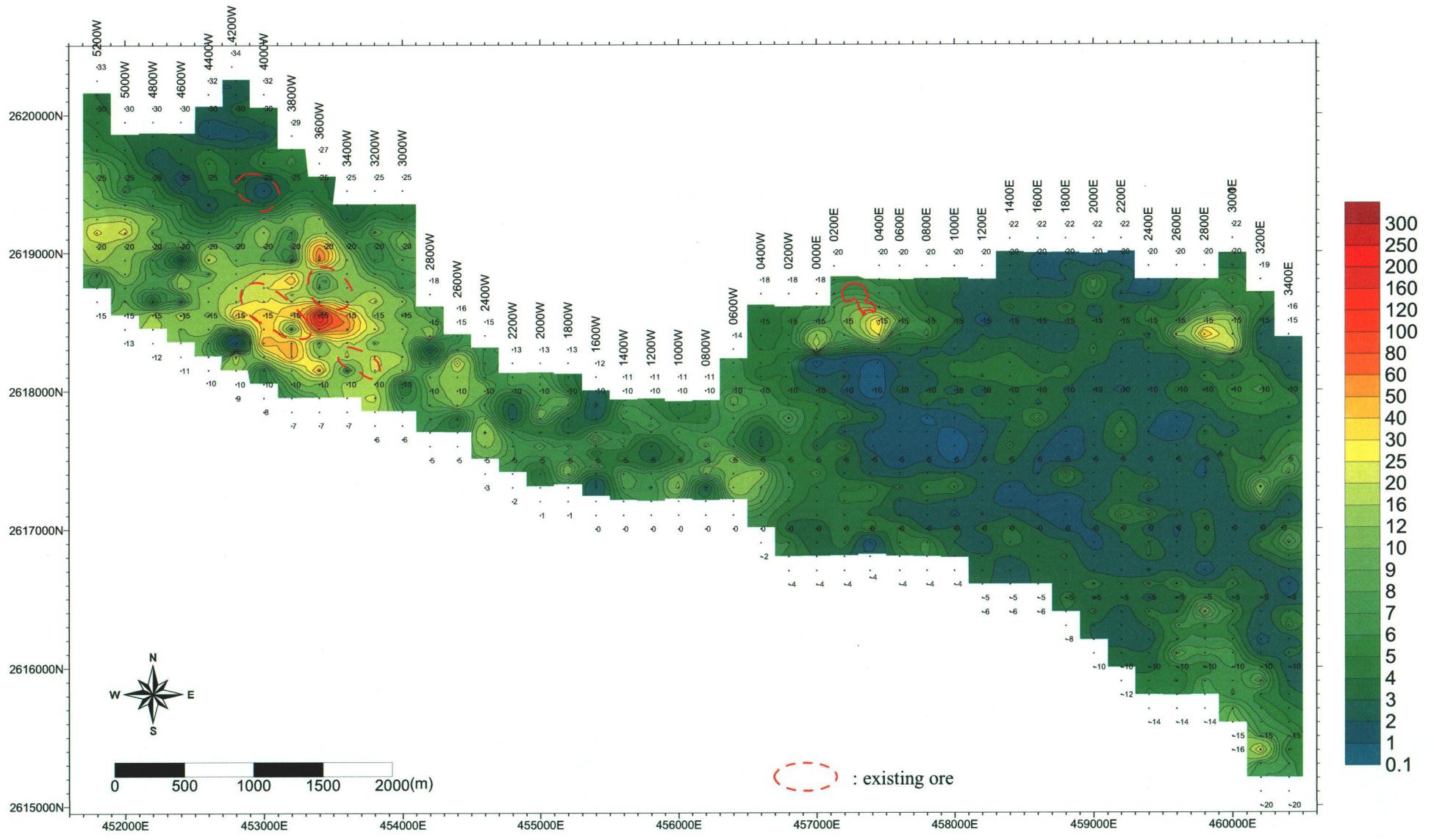


Fig. II -2-15(3) Metal factor plane map for N=4

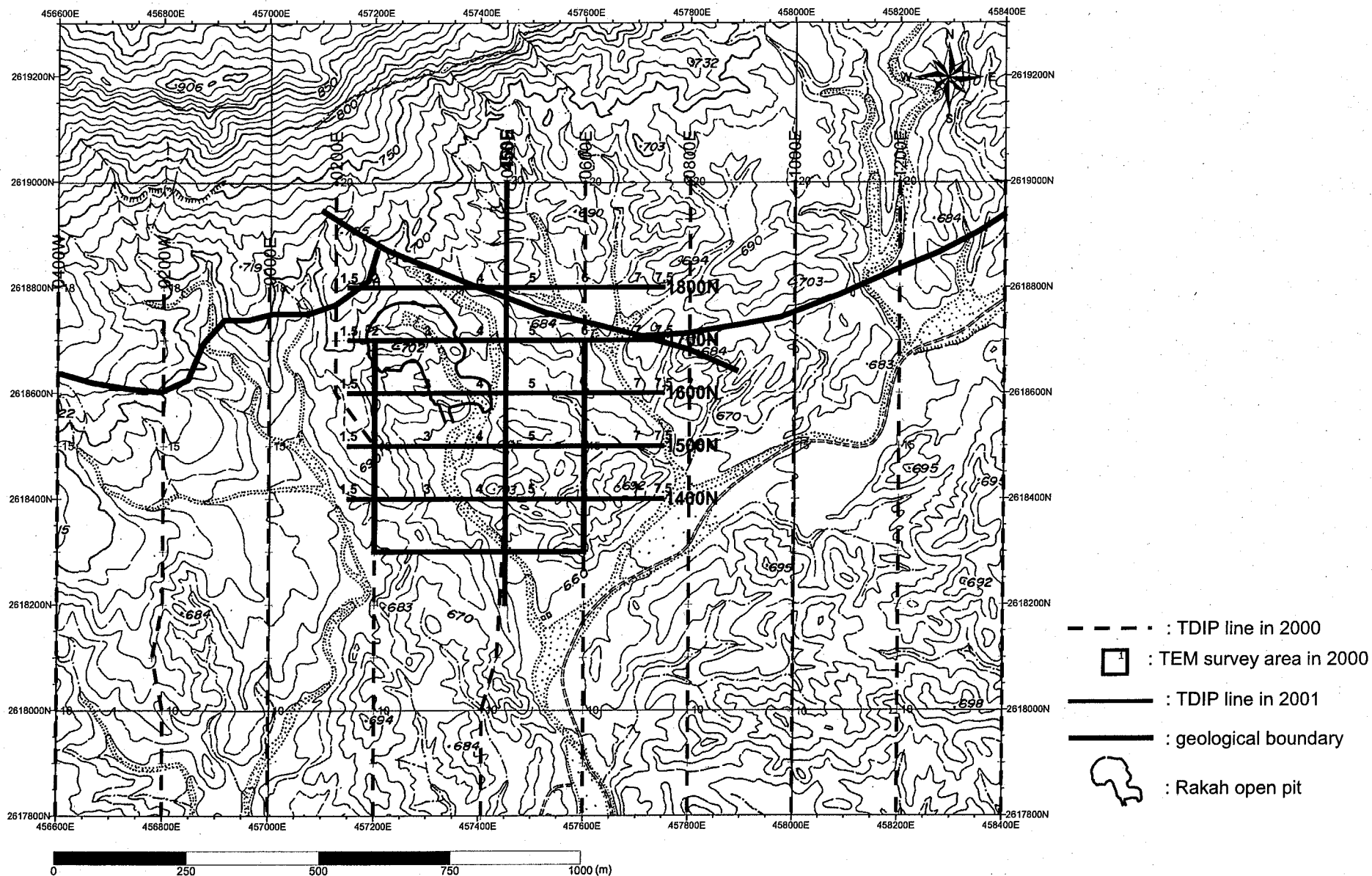


Fig. II -2-16 Geophysical survey location in Rakah Mine area

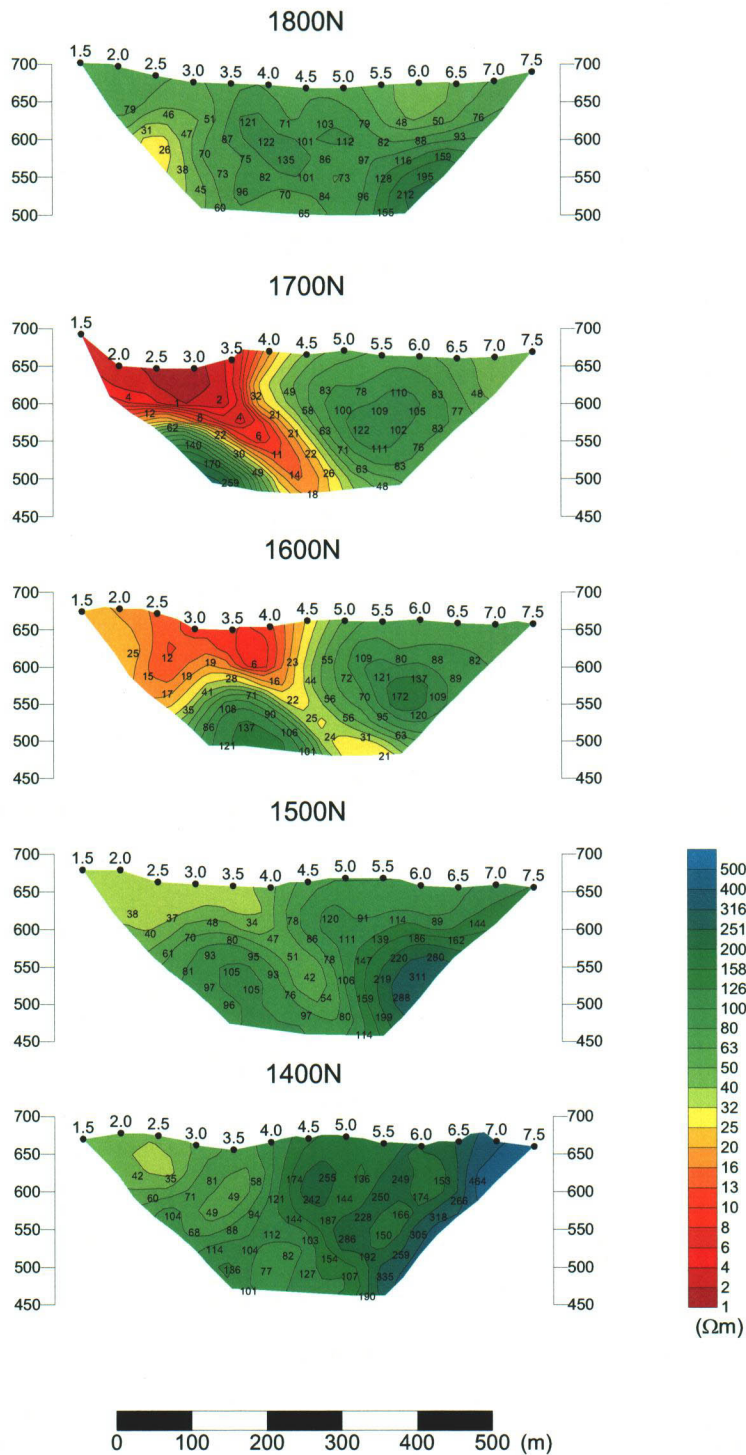


Fig. II -2-17(1) Apparent resistivity pseudo-sections of E-W lines in Rakah Mine area

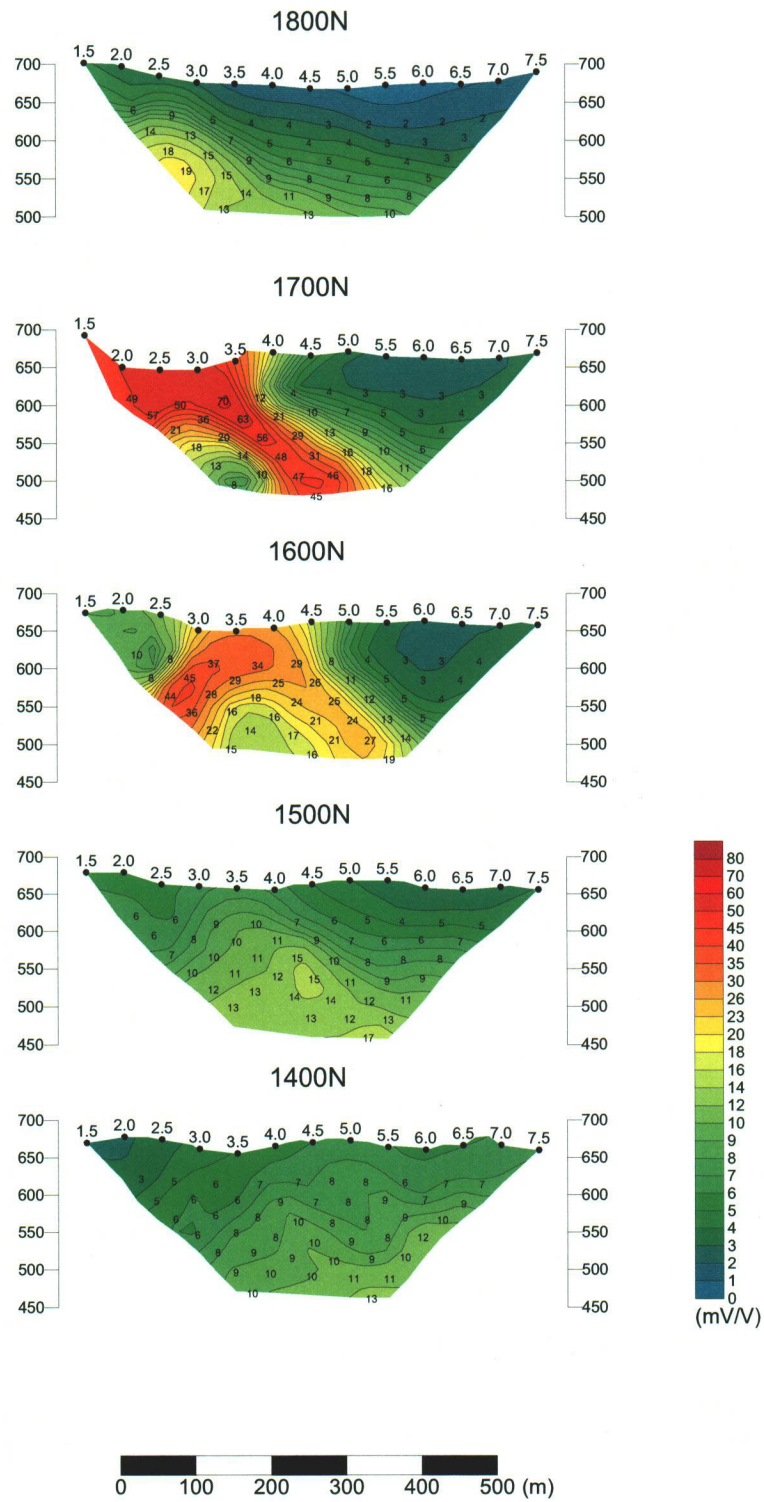


Fig. II -2-17(2) Chargeability pseudo-sections of E-W lines in Rakah Mine area

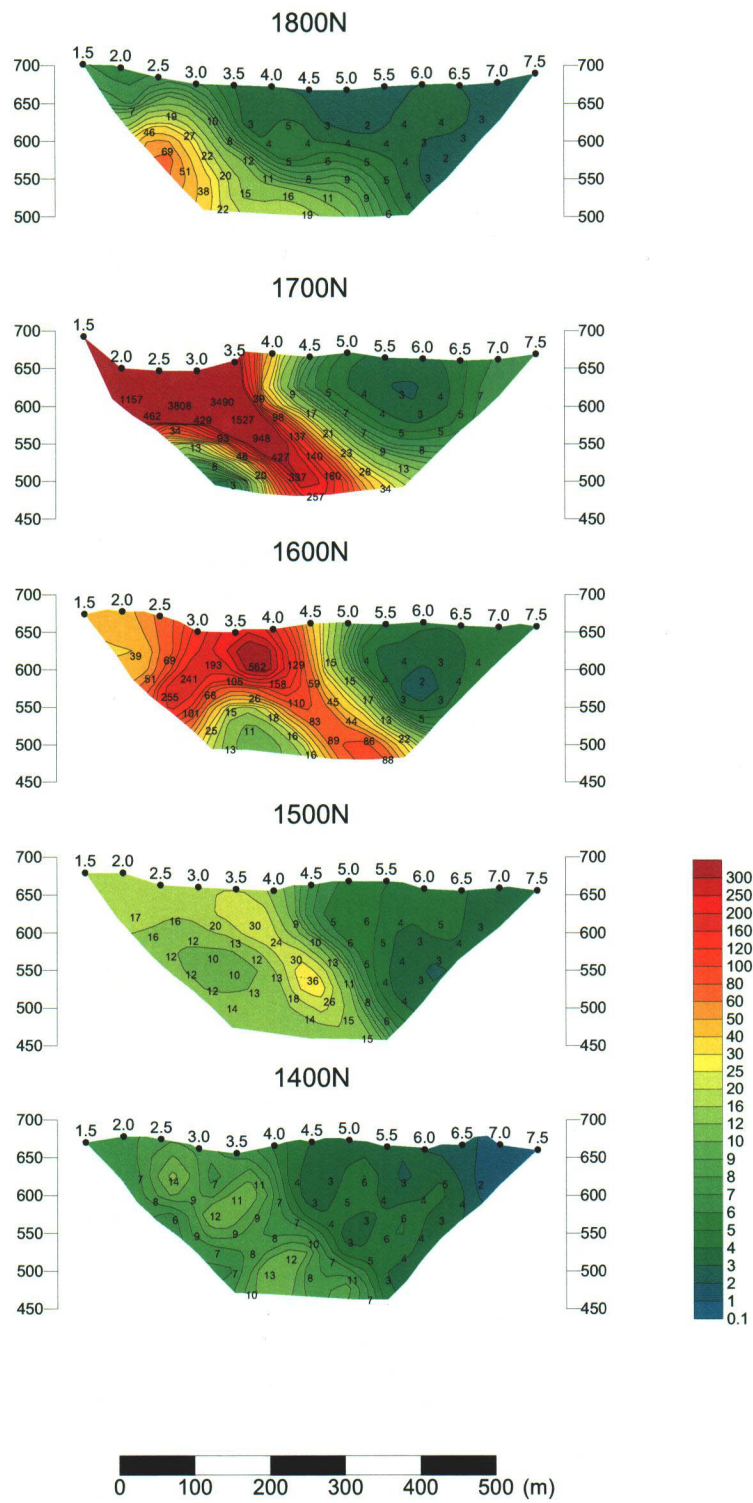


Fig. II -2-17(3) Metal factor pseudo-sections of E-W lines in Rakah Mine area

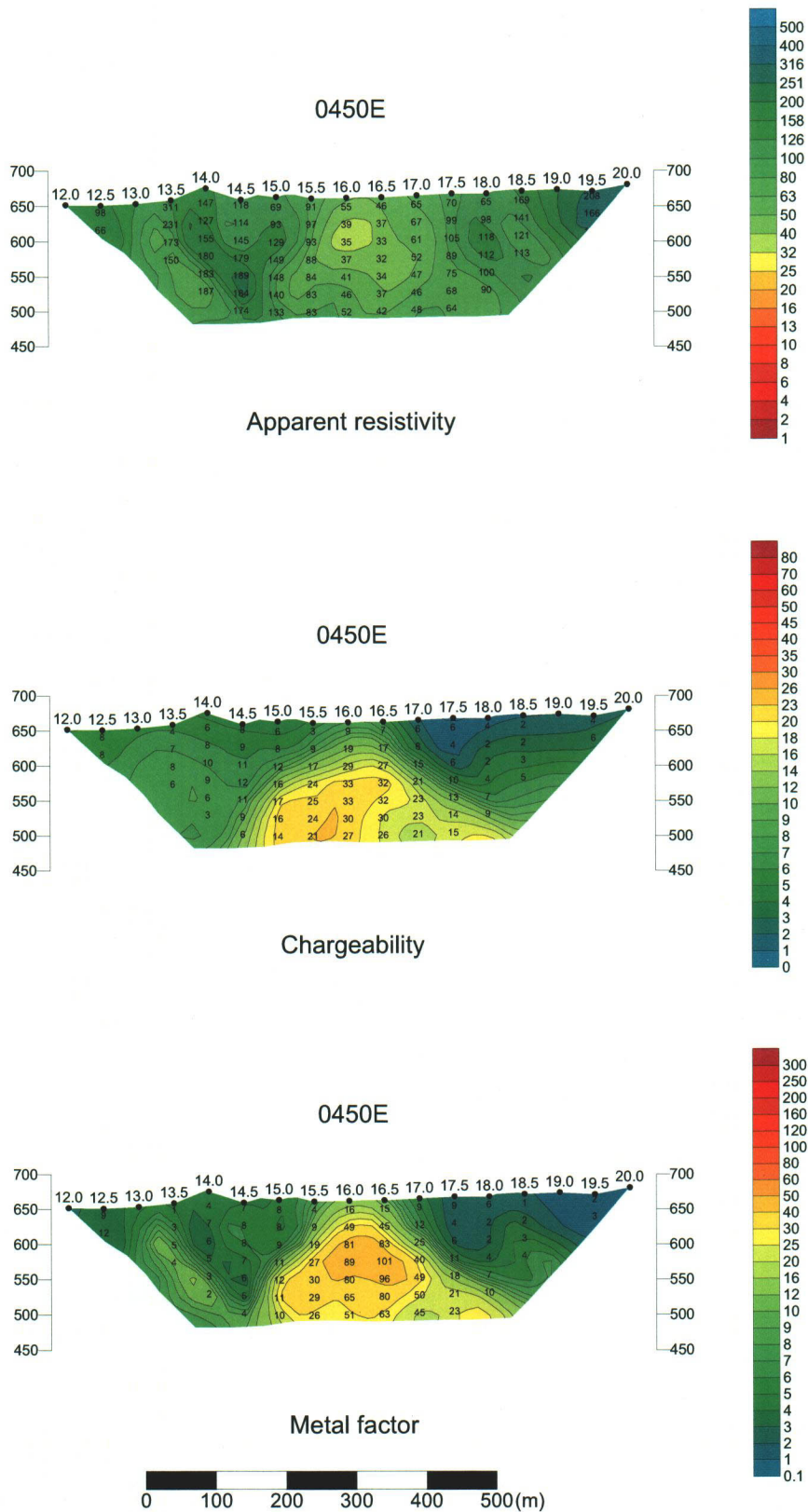


Fig. II -2-17(4) TDIP pseudo-sections of N-S line in Rakah Mine area