

Fig. II -2-9(1) Apparent resistivity pseudo-sections(0000E-1400E)

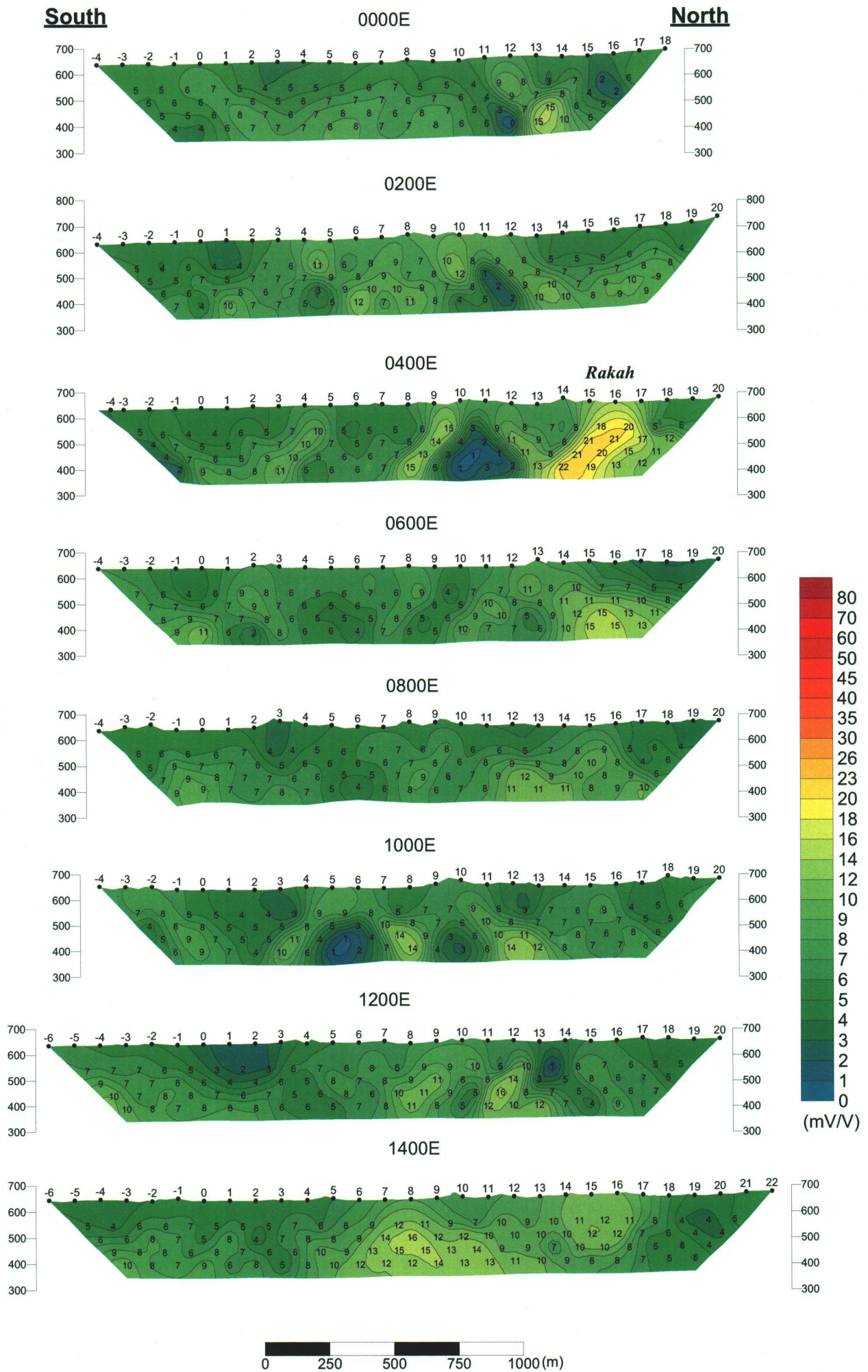


Fig. II -2-9(2) Chargeability pseudo-sections(0000E-1400E)



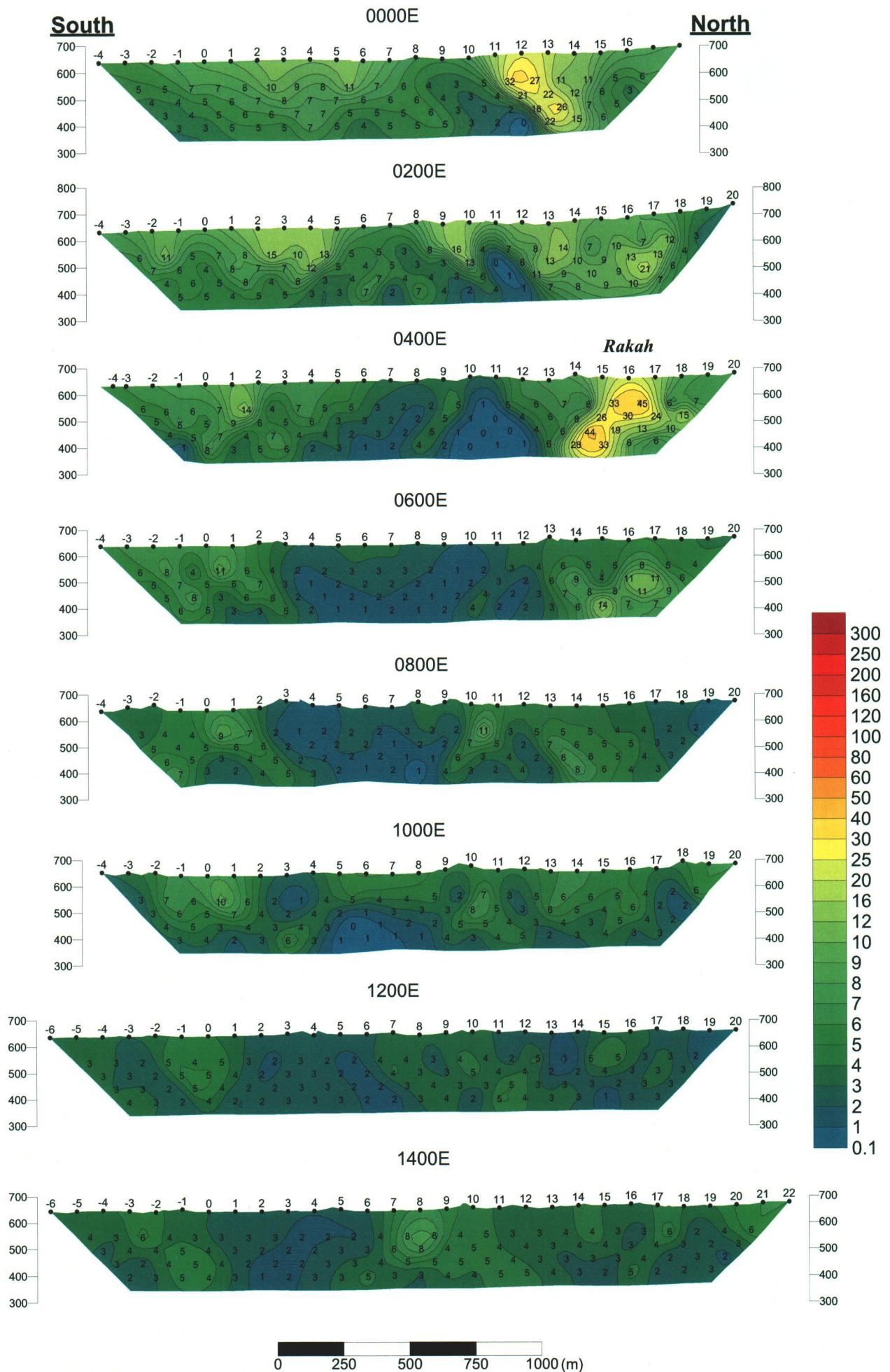


Fig. II -2-9(3) Metal factor pseudo-sections(0000E-1400E)

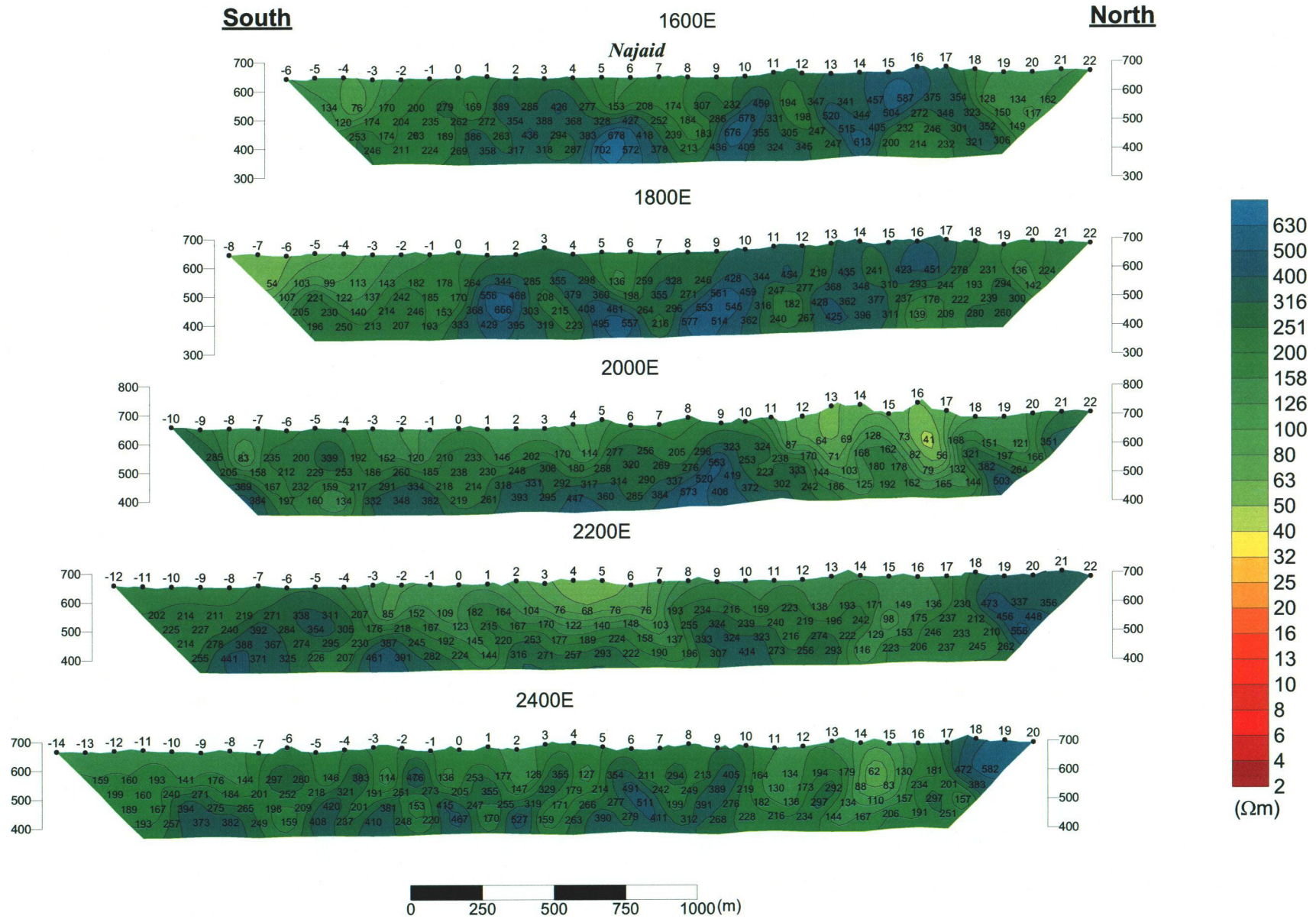


Fig. II -2-10(1) Apparent resistivity pseudo-sections(1600E-2400E)



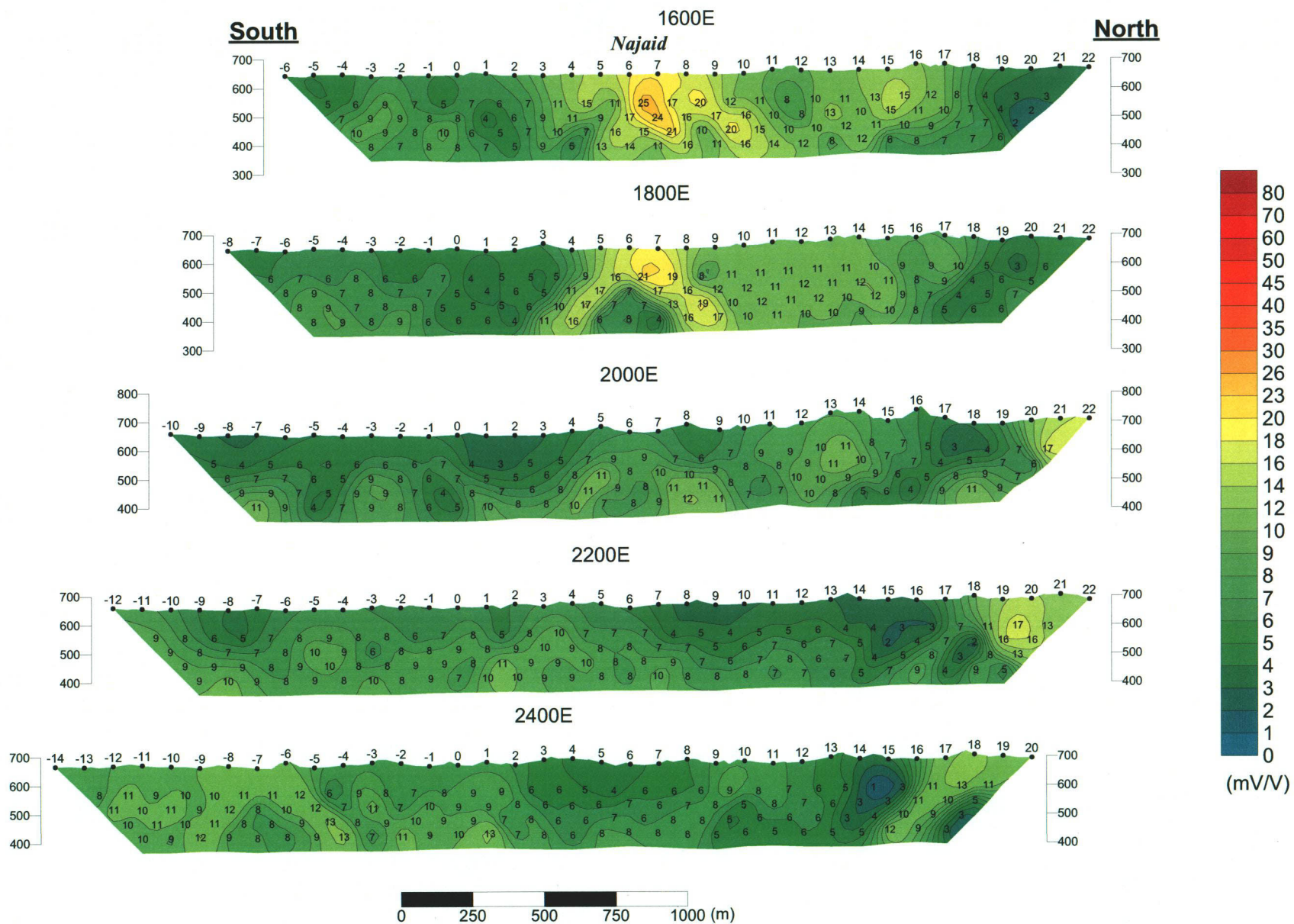


Fig. II -2-10(2) Chargeability pseudo-sections(1600E-2400E)

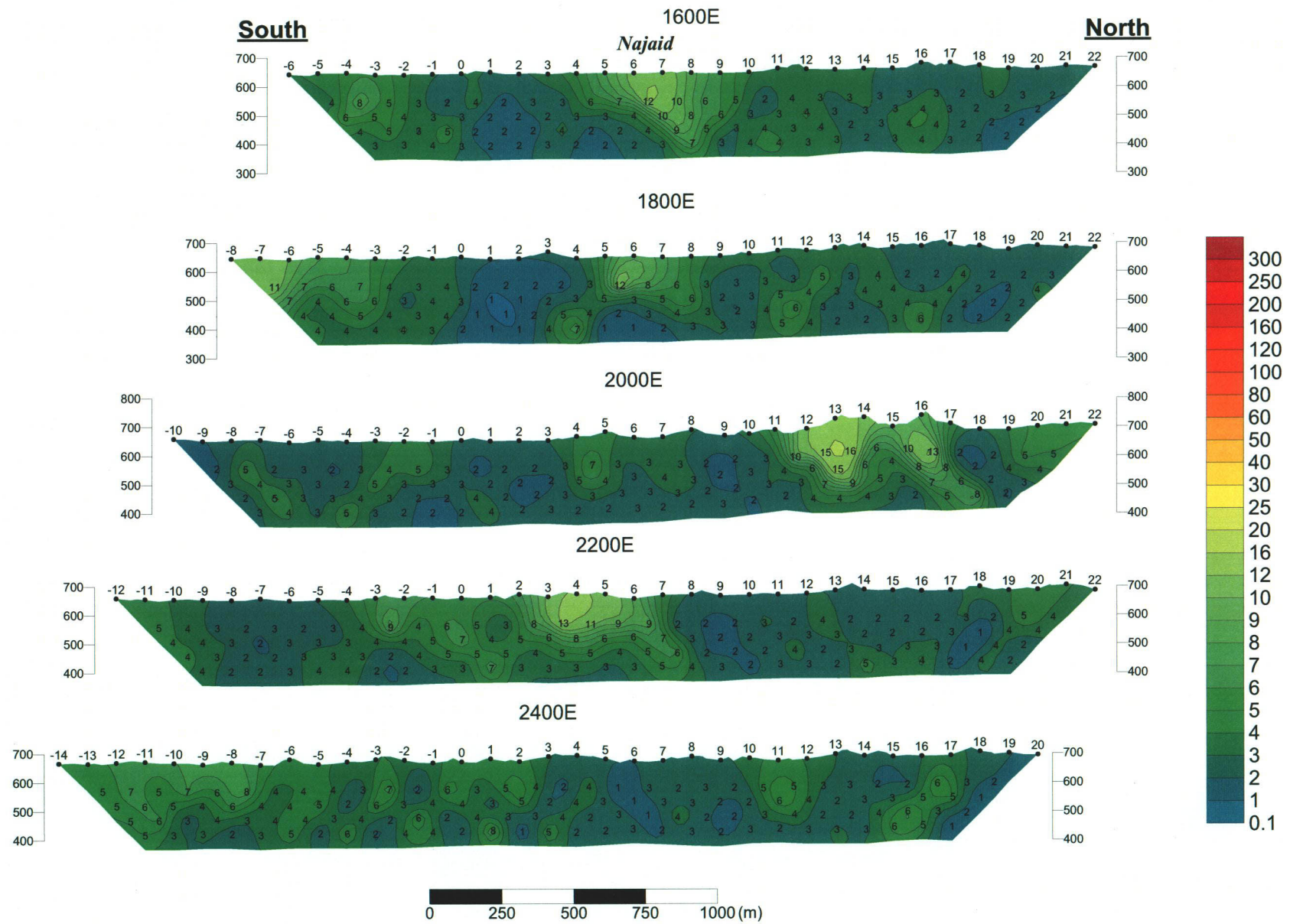


Fig. II -2-10(3) Metal factor pseudo-sections(1600E-2400E)



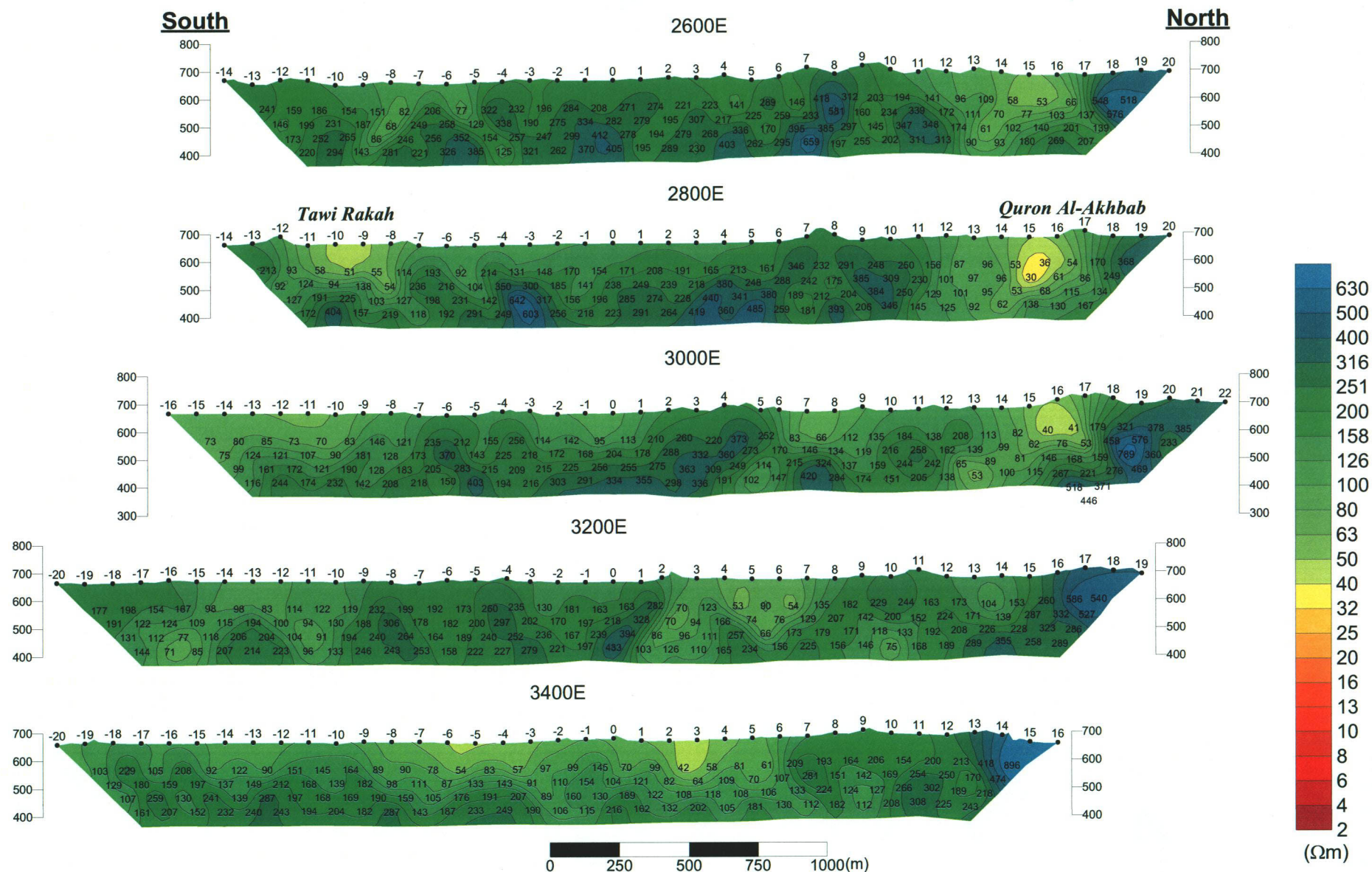


Fig. II -2-11(1) Apparent resistivity pseudo-sections(2600E-3400E)

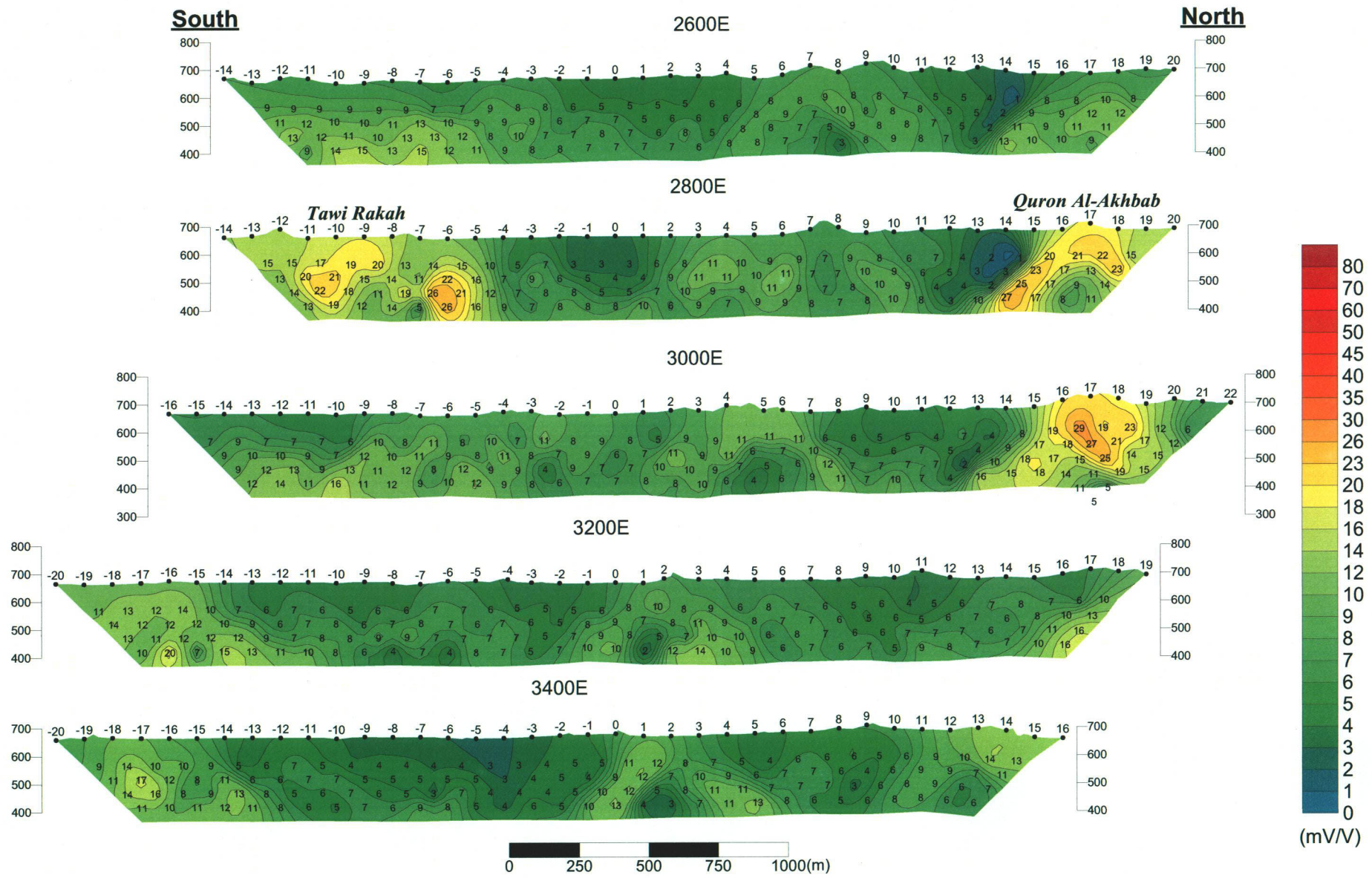


Fig. II -2-11(2) Chargeability pseudo-sections(2600E-3400E)



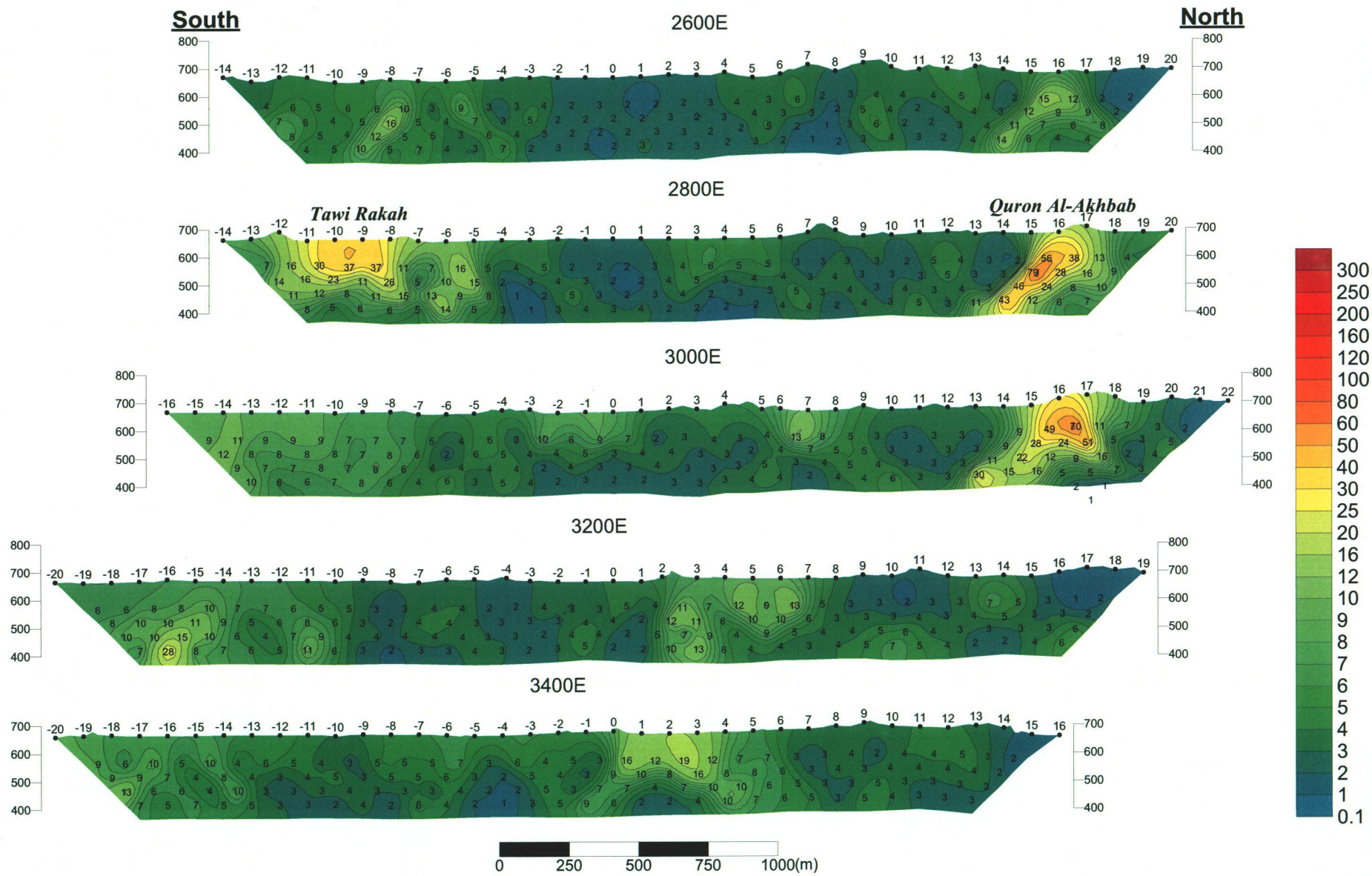


Fig. II -2-11(3) Metal factor pseudo-sections(2600E-3400E)

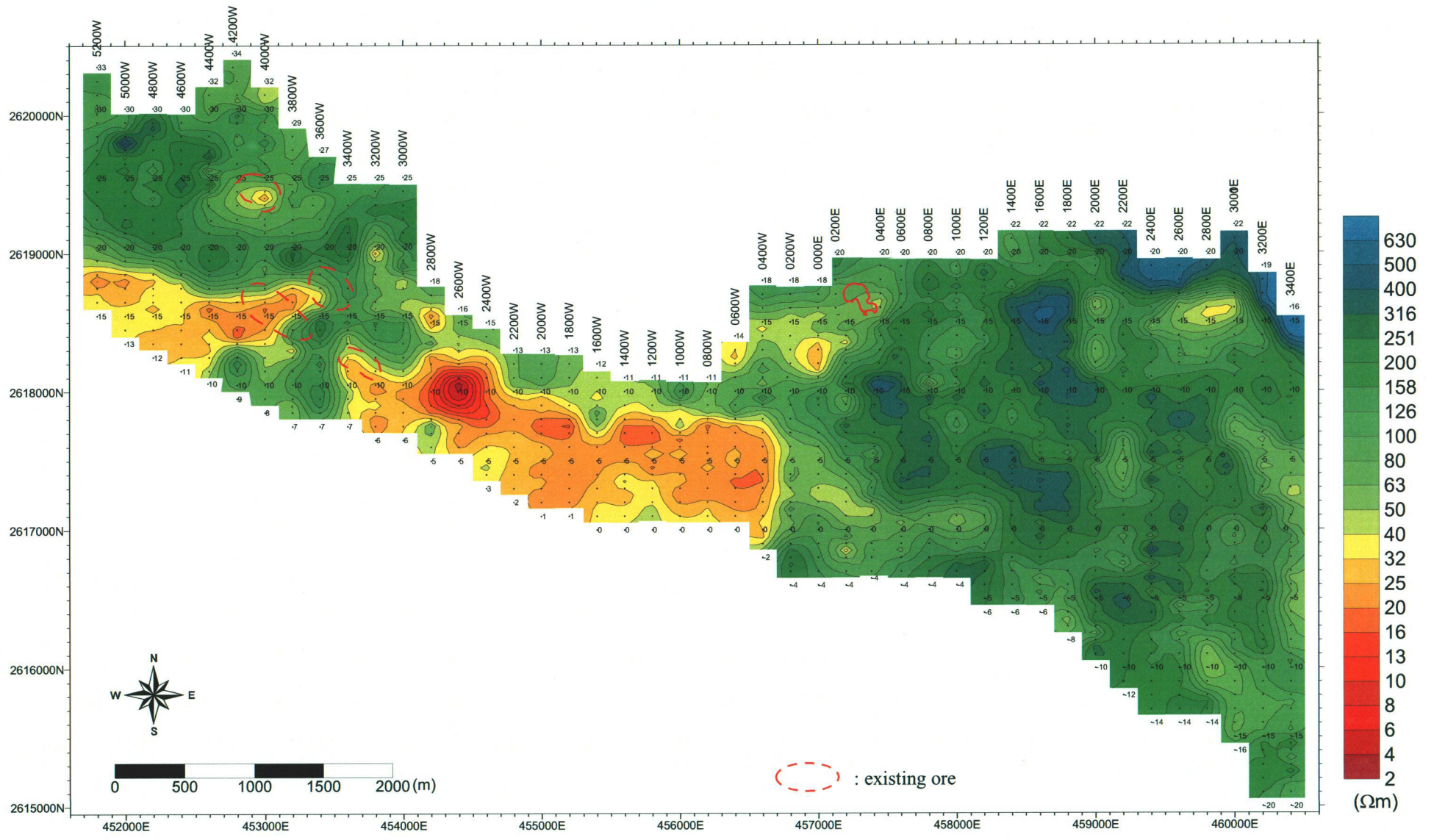


Fig. II -2-12(1) Apparent resistivity plane map for N=1



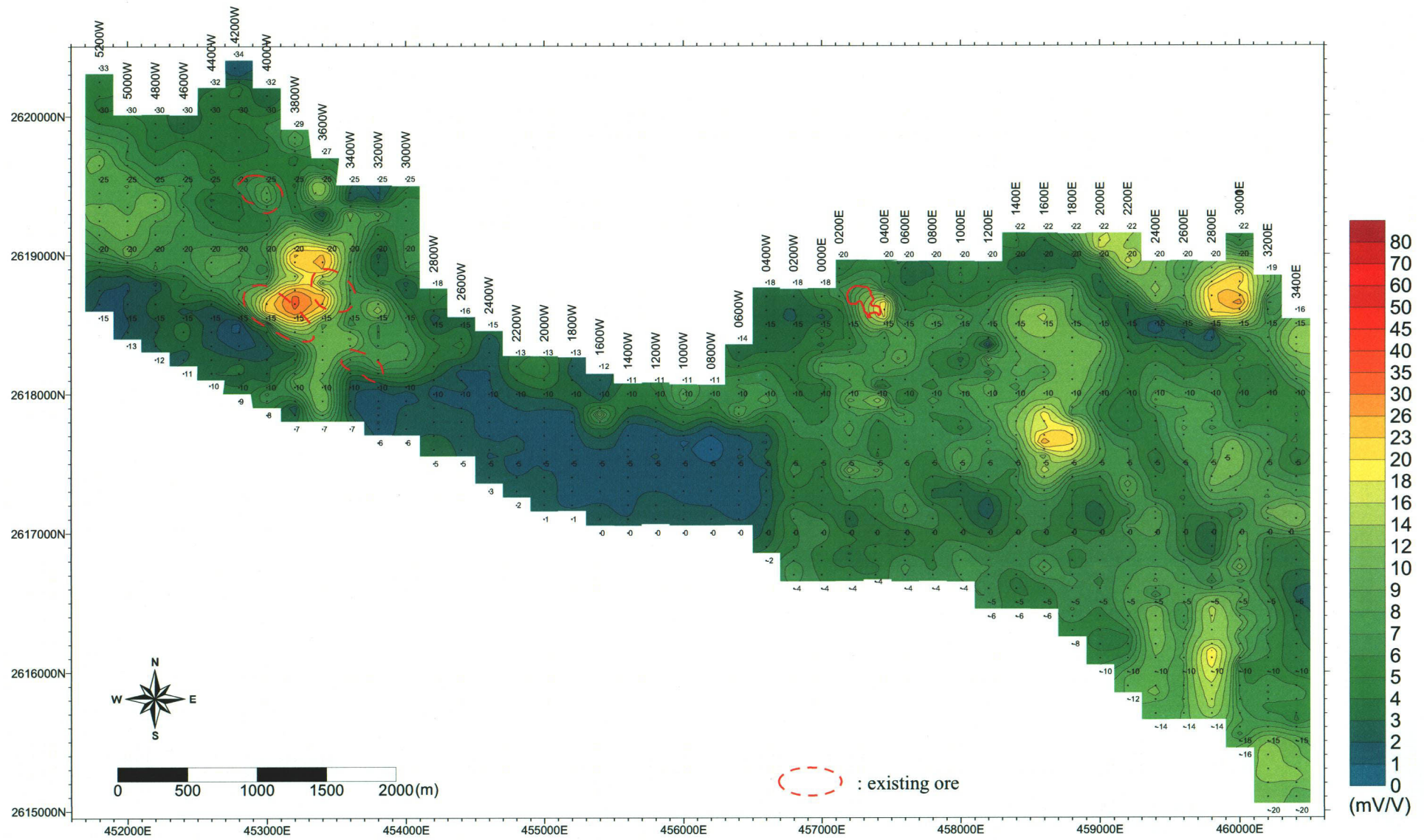


Fig. II -2-12(2) Chargeability plane map for N=1

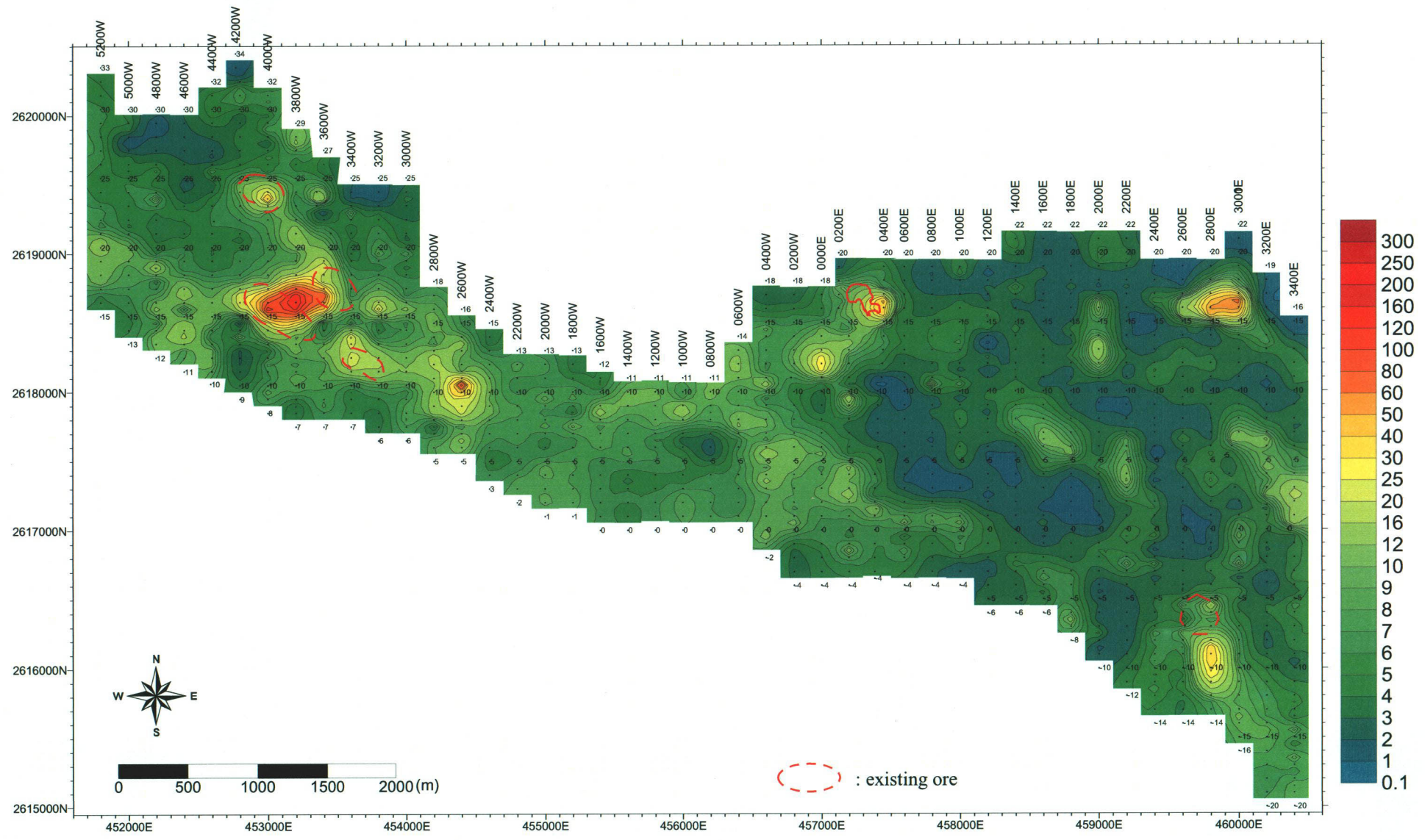


Fig. II -2-12(3) Metal factor plane map for N=1