

**Annex 1 “Questionnaire File” of Pretest Survey
(Sample)**

CONFIDENTIAL

PHIL FEEDS MILLING CO.,
1347 SOLER ST., STA CRUZ, MANILA

Questionnaire No.: 151 - 10 .

-

-

PRETEST SURVEY
FOR
DEVELOPMENT
OF
THE CURRENT SURVEY OF PRODUCTION

Questionnaire File

<< CONTENTS >>

- Introduction Letter of the NSO
- Brochure of *Japan International Cooperation Agency (JICA)*
- **Questionnaires for 3 Reference Months**
- Description of Commodities Specified in the Questionnaire
- Instructions for Filling Out the Questionnaire

<< REFERENCE MONTHS >>

January, February and March 2001

JICA Study Team



Republic of the Philippines

**NATIONAL
STATISTICS
OFFICE**

Manila

Reference No. 00ITD01-261



THE PRESIDENT / CEO
Phil Feeds Milling Co.
1347 Soler St., Sta Cruz, Manila

Dear Sir/Madam:

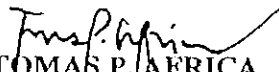
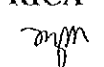
Japan International Cooperation Agency (JICA), in cooperation with the National Statistics Office (NSO), is undertaking a Study on the Development of Industrial Statistics in the Philippines. Part of the study is the development of the Current Survey of Production (CSP). The CSP aims to produce improvements in the indicators of volume and value of production of the Philippine manufacturing sector currently being generated from the Monthly Integrated Survey of Selected Industries (MISSI). The CSP is specifically designed to generate direct commodity and volume-based indicators.

To test the adequacy of the design being developed, a pretest will be carried out by the JICA through the Philippine Statistical Association (PSA). It will be conducted monthly for three months from January to March 2001.

Your cooperation and contribution to the pretest is vital to make the current MISSI more useful and informative to all concerned.

Thank you.

Very truly yours,


TOMAS P. AFRICA
Administrator 

EFA/jry
Jry/pretestletter.doc



1999 Recognition for Quality Commitment Recipient

P.O. Box Manila, Philippines
Cable Address: NSOPHIL
Email: T.Africa@mail.census.gov.ph
Web: <http://www.census.gov.ph>
Telephone: (632)713-7074 (632)716-0734
Fax: (632)713-7073 (632)715-6502

JICA

in the PHILIPPINES
1998 - 1999



JAPAN INTERNATIONAL COOPERATION AGENCY
PHILIPPINE OFFICE

F O R E W O R D

For more than two decades now, JICA has played an active role in the socio-economic growth of developing countries throughout the world by executing technical cooperation and assisting grant aid programs under the sponsorship of the Government of Japan.

The JICA Philippine Office is proud to be contributing to the efforts of the Philippine Government to transform the country as one of Asia's tiger economies. Through its activities which seek primarily to transfer knowledge and technology, the JICA Philippine Office has become an active partner of the Philippine Government. With this, it has attuned itself well with the national vision of Philippines 2000 and Plan 21 — that is, global competitiveness and people empowerment.

As JICA moves towards its third decade, we in the JICA Philippine Office renew our commitment to fulfill our role of bringing to the country the benefits of JICA's partnership. In tandem with the Philippine Government, we shall pursue with greater vigor and dynamism our efforts in the various fields of technical cooperation supported by JICA and which we have developed in the country — the technical trainings; the dispatch of experts and development study teams from Japan; the different project-type technical cooperation and grant aid programs; the Japan Overseas Cooperation Volunteers; the friendship program between Japanese people and the Filipino youths; and emergency disaster relief, etc.

All these we shall do, armed with the same faith and confidence that the Government of Japan, through JICA, has placed on the Filipino people who have shown their collective determination to rise as peace-loving and progressive country in the community of nations.

Mabuhay!!!



HIROSHI GOTO
Resident Representative
Japan International Cooperation Agency
Philippine Office

Human Resources Development and Nation Building, Through Heart-to-Heart Communication



Contents

Japan's Official Development Assistance (ODA)	3
What is JICA? and JICA Philippine Office	5
Technical Training in Japan	7
Friendship Program	9
Dispatch of Experts	11
Equipment Supply	14
Project-Type Technical Cooperation	15
Development Study	19
Support for Grant Aid	21
Japan Overseas Cooperation Volunteers	23
Emergency Disaster Relief	25
Development Cooperation	26
Request Survey For Technical Cooperation & General Grant Aid Programs in the Philippines	27
Directory of JICA Projects in the Philippines	29
JICA Organizational Chart	37

Japan's Official Development Assistance (ODA)

A Push for Development

About half a century ago, Japan started to pick up the pieces of its nation's dreams and aspirations which were shattered by the ravages of war. However, the requirements of reconstructing its economy were simply too much for the resources it held in its hands. Outside assistance was needed. The World Bank responded, and aid poured in which became instrumental in bringing about the success of the rebuilding efforts and helped make Japan a country to reckon with in the world today.

As it has known the benefits of aid, Japan has been delivering aid through the years, and through out the world, in order to share its expertise and resources and help push the efforts of developing countries towards self-reliance and self-growth, through its Official Development Assistance (ODA).

Japan's ODA is the country's response to the request for assistance from developing countries whose resources and capabilities are not enough to meet the requirements of socio-economic development, or even their most basic human needs.

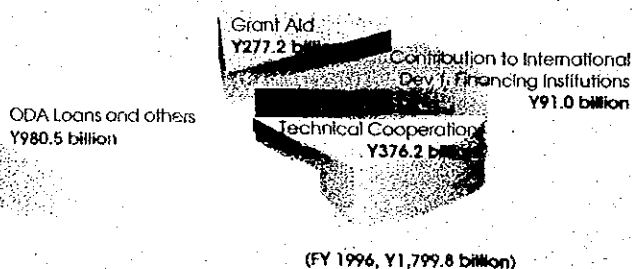
Japan's ODA began in 1954 when it joined the Colombo Plan, an organization set up in 1950 to assist Asian countries in their socio-economic development. Since then, Japan's ODA commitment has increased from year to year and has expanded around the globe, from Asia to Eastern and Central Europe.

Today, Japan stands as the top donor in the world in terms of net ODA disbursements. In 1996 Japan's ODA amounted to \$19.44 billion, the largest in the world for four years now. The amount represents 24.5 percent of the total amount of assistance extended by developed countries.

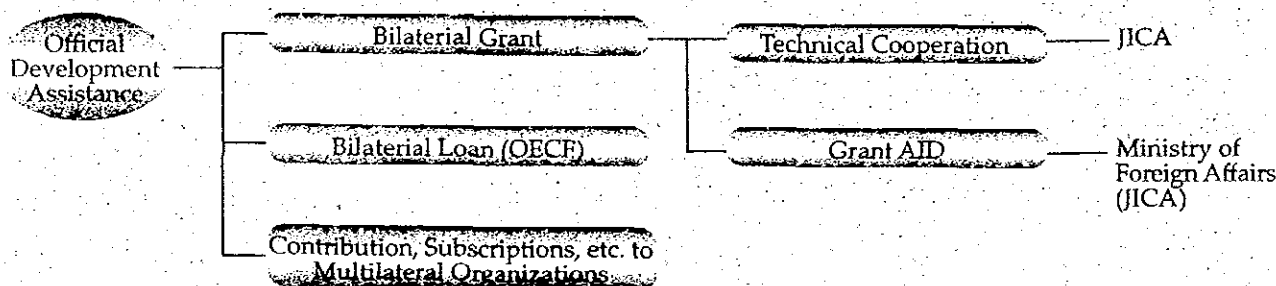
Japan's ODA consists of bilateral grants (grant aid and technical cooperation), bilateral loans (loans assistance generally known as "Yen loans"), and contributions and subscriptions to multilateral organizations.

Japan's granting of ODA is governed by four principles (ODA Charter of 1992), sustainable development, non-military use of aid, economic and social development towards international peace and stability, and promotion of a market-oriented economy and good governance.

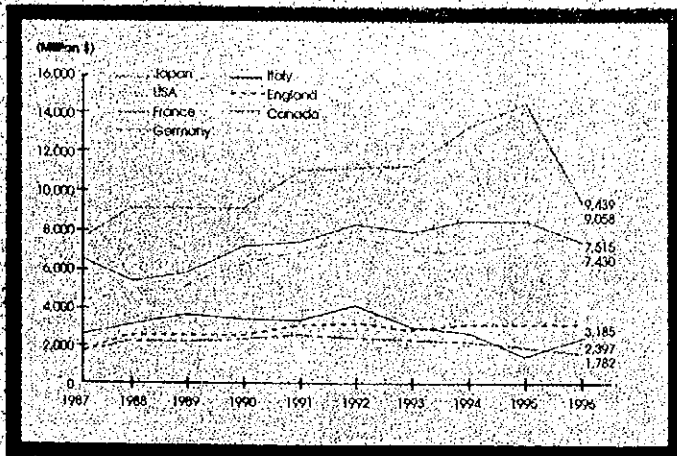
Japanese ODA Operation Budget (by Source and Aid Type in 1996)



Year	GRANTS			LOAN AID		
	Grant Aid	Technical Cooperation		Gross	Net	Total
		Cooperation	Total			
1993	158.23	87.19	245.42	798.99	512.96	758.39
1994	138.41	110.41	248.82	586.85	342.78	591.60
1995	121.08	114.43	235.51	604.48	180.62	416.13
1996	91.14	94.34	185.49	571.34	228.96	414.45
1997	68.21	89.25	157.47	512.71	161.51	318.98
Total	1,631.31	1,119.63	2,750.48	7,994.60	5,377.93	8,128.89



Trend in Major DAC Countries' ODA (net disbursement basis)

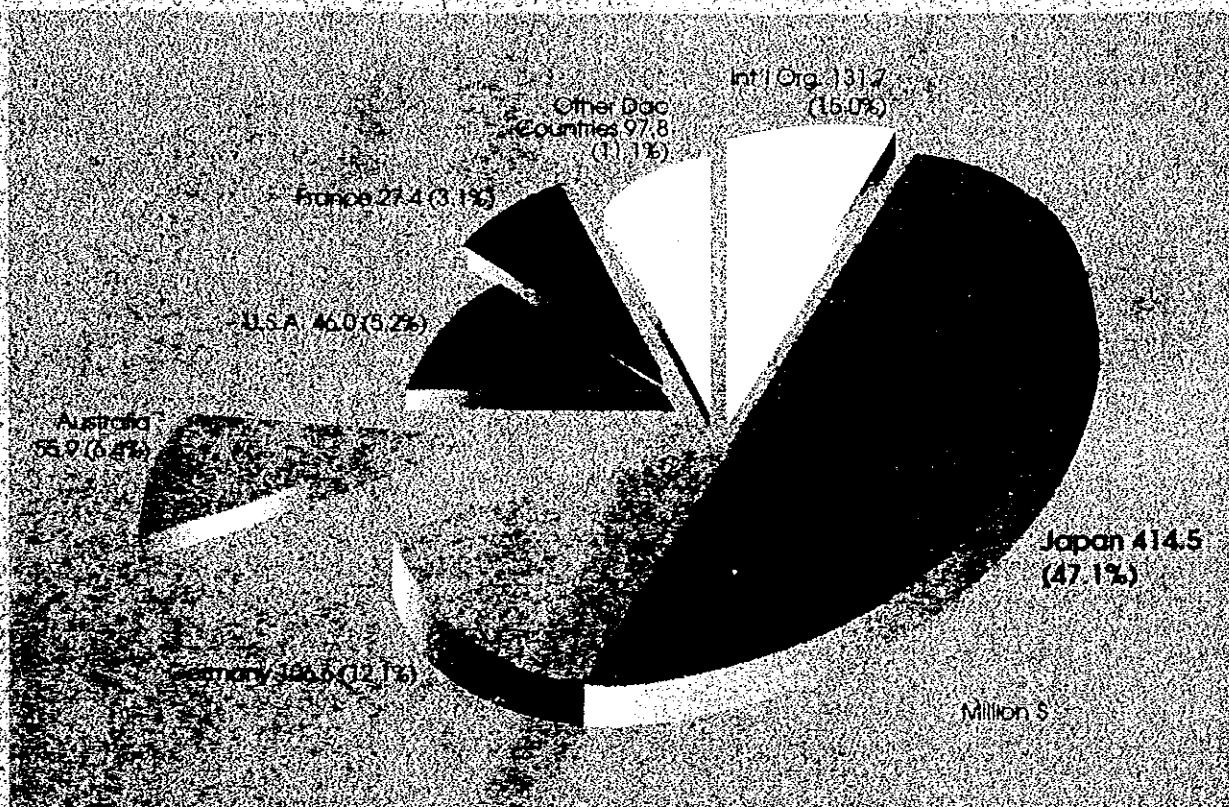


Source: DAC Press Release, OECD 1997

Of the 21 member countries on the OECD's Development Assistance Committee (DAC), Japan spent \$9.44 billion for ODA, retaining the position as the world's top donor in 1996.

Share of Japan's ODA in overall assistance to the Philippines

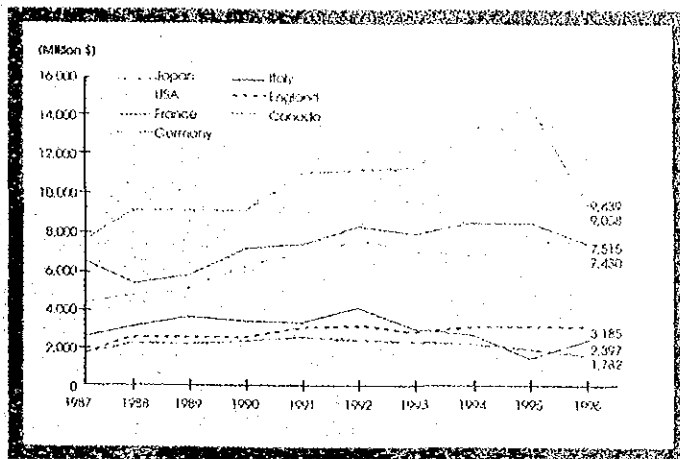
Amount of DAC Countries & International Organizations' ODA Disbursements to the Philippines in 1996



Japan's ODA occupies the largest portion of all foreign assistance extended to the Philippines

Source: Japan's ODA Annual Report, Ministry of Foreign Affairs (1998)

Trend in Major DAC Countries' ODA (net disbursement basis)

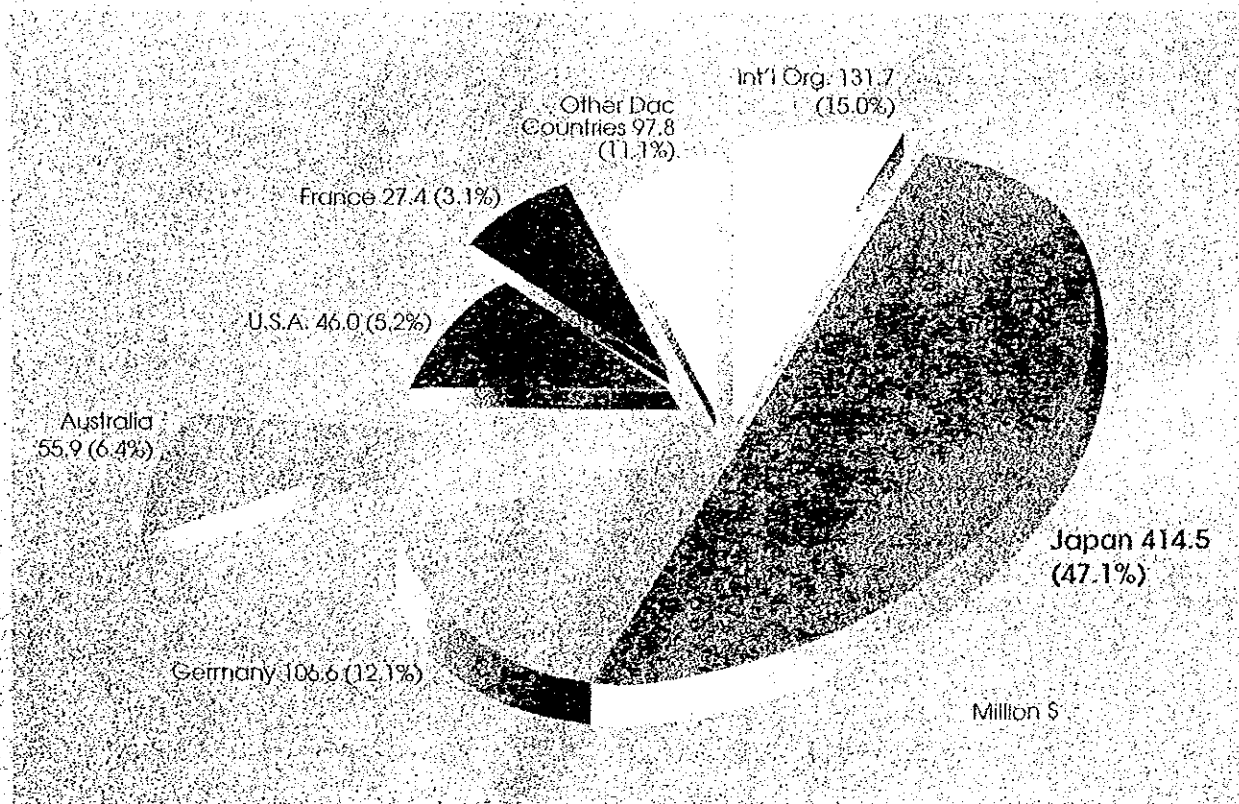


Source: DAC Press Release, OECD 1997

Of the 21 member countries on the OECD's Development Assistance Committee (DAC), Japan spent \$9.44 billion for ODA, retaining the position as the world's top donor in 1996.

Share of Japan's ODA in overall assistance to the Philippines

Amount of DAC Countries & International Organizations' ODA Disbursements to the Philippines in 1996



Japan's ODA occupies the largest portion of all foreign assistance extended to the Philippines

Source: Japan's ODA Annual Report, Ministry of Foreign Affairs (1998)

Japan International Cooperation Agency (JICA)

Promoting Technical Cooperation for Sustainable Development

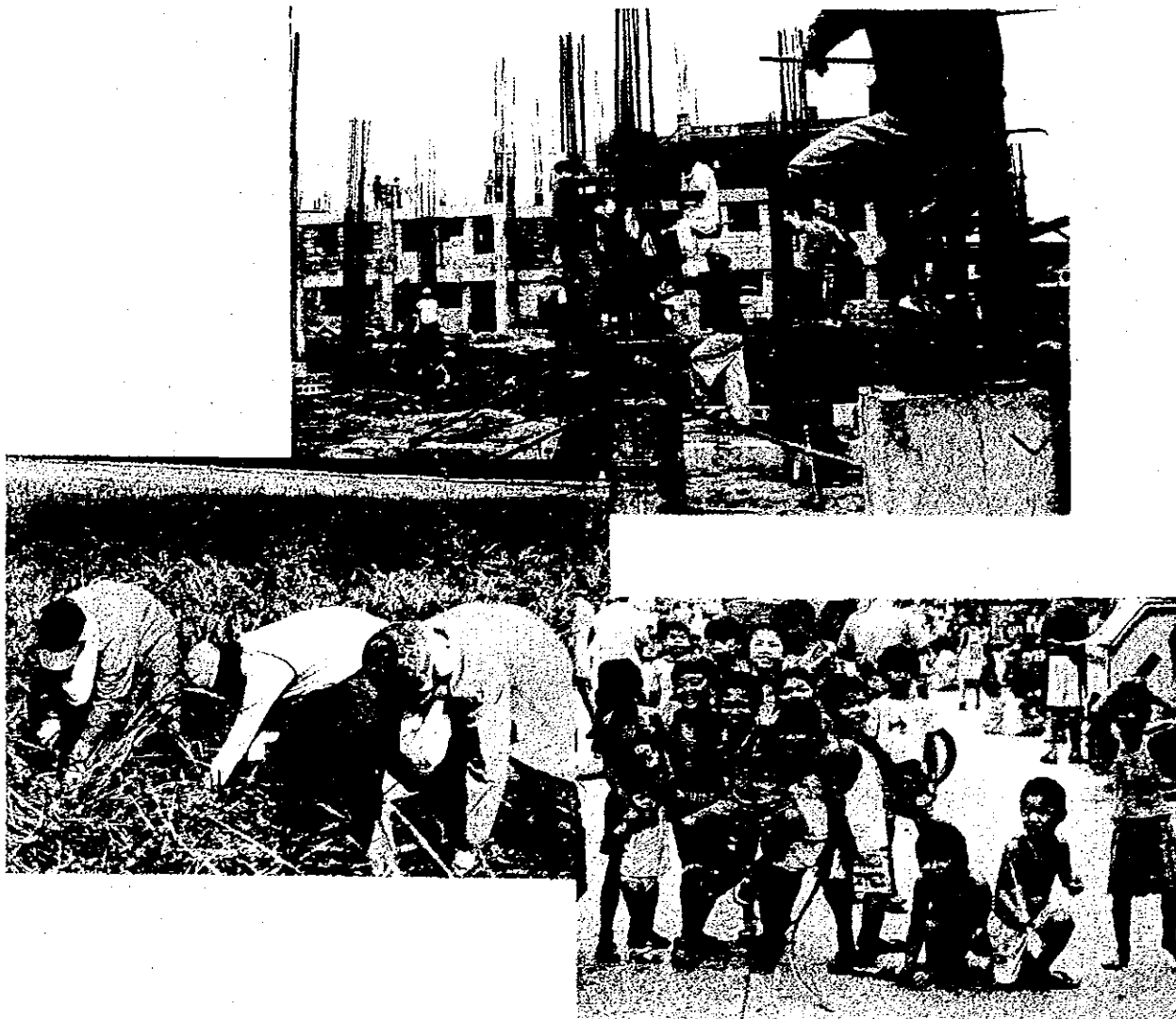
At the forefront of Japan's desire to assist developing nations in achieving socio-economic growth stands the Japan International Cooperation Agency or JICA.

JICA was created in August 1974 as the sole executing agency of the government-sponsored technical cooperation programs of Japan.

Technical cooperation is intended for a noble goal – the development of human resources for the nation building of developing countries. This is the essence of and the challenge posed by JICA's role.

Technical cooperation in this sense covers a wide range of programs being carried out by the Government of Japan – from technical training in Japan, dispatch of Japanese experts, and equipment and supply, to project-type technical cooperation which integrates the previous three programs, dispatch of Japan Overseas Cooperation Volunteers (JOCV) for grassroots cooperation, assistance in the formulation of development studies, support to grant aid, friendship program, and even disaster relief operations. This is the broad range of programs JICA executes.

Today, JICA has about 1200 staff members working for both in Japan and at its more than 70 offices overseas.



JICA Philippine Office

Potent Partner in Development

For almost a quarter of a century now, JICA has been working effectively, as an active partner in the pursuit of development and progress by developing countries. The Philippines is one of the largest recipients in the technical cooperation offered by Japan through JICA.

In the Philippines, the JICA Philippine Office gives life to JICA's motivating principles, i.e., "Human Resources Development, Nation building, and Heart-to-Heart Communication."

Through the efforts of JICA Philippine Office, millions of Filipinos have benefited from JICA's technical training in Japan; acquiring and upgrading their technical knowledge and skills; from the experts and development study teams sent from Japan that provide technical assistance in the formulation of development plans and projects in the public sector; from countless development projects implemented and grant-aid programs supported by JICA; from the program that fosters friendship between Japanese people and youths from other countries; and from disaster relief assistance.



Pretest Survey for Development of Current Survey of Production (CSP)

Questionnaire No:	151-10	Sector:	Production, processing and preservation of meat, fish and other seafoods, fruit, vegetables, oils and fats
Establishment ID:		Reference Month / Year:	January / 2001
Please fill out by the 10th day of the next month.			

1. Finished Products			VOLUME						VALUE	
Code	Name	Unit	Production (A)	Receipts (B)	Internal Consumption (X)	Shipment			Inventory at the end of month (F)	Production (1000 pesos) (G)
						Domestic Sales (C)	Export (D)	Others (E)		
101	Dressed / packed poultry	Ton								
102	Dressed / packed red meat	Ton								
103	Preserved / prepared poultry and poultry products	Ton								
104	Preserved / prepared red meat and red meat products	Ton								
105	Canned fish and other aquatic animals	Ton								
106	Packed fish and other aquatic animals	Ton								
107	Smoked / dried fish and other aquatic animals	Ton								
108	Canned / packed fruits	Ton								
109	Fruit and vegetable sauces	Ton								
110	Flour of potato and wheat	Ton								
111	Coconuts and vegetable oil	Ton								

2. Raw Materials		VOLUME	
Code	Name	Unit	Inventory at the end of month
			(H)
201	Poultry	Ton	
202	Red meat	Ton	
203	Fish and other aquatic animals	Ton	
204	Fruits and vegetables	Ton	

3. Monthly Production Capacity		VOLUME	
Code	Specification	Unit	Capacity (monthly)
			(I)
301	Filling capacity of canned / packed fish and other aquatic animals	Ton	
302	Filling capacity of fruit and vegetable sauces	Ton	
303	Milling capacity of flour of potato and wheat	Ton	
304	Canning / bottling capacity of coconuts and vegetable oil	Ton	

(J) Remarks (If there is substantial change in production, shipment or inventory compared to the previous month, please explain why.)

[CONTACT] ASSIST - Philippine Statistical Association, Inc.
Ma. Celeste M. Molina, Frederick B. Sta. Maria
 Telephone / Facsimile: (02) 715-1448, (02) 924-3986
 [ENUMERATOR] Tel:

Note: The Study Team of Japan International Cooperation Agency (JICA) guarantees the confidentiality of all information collected.

Pretest Survey for Development of Current Survey of Production (CSP)

Questionnaire No:	151-10	Sector:	Production, processing and preservation of meat, fish and other seafoods, fruit, vegetables, oils and fats
Establishment ID:		Reference Month / Year:	January / 2001
Please fill out by the 10th day of the next month.			

1. Finished Products			VOLUME						VALUE	
Code	Name	Unit	Production (A)	Receipts (B)	Internal Consumption (X)	Shipment			Inventory at the end of month (F)	Production (1000 pesos) (G)
						Domestic Sales (C)	Export (D)	Others (E)		
101	Dressed / packed poultry	Ton								
102	Dressed / packed red meat	Ton								
103	Preserved / prepared poultry and poultry products	Ton								
104	Preserved / prepared red meat and red meat products	Ton								
105	Canned fish and other aquatic animals	Ton								
106	Packed fish and other aquatic animals	Ton								
107	Smoked / dried fish and other aquatic animals	Ton								
108	Canned / packed fruits	Ton								
109	Fruit and vegetable sauces	Ton								
110	Flour of potato and wheat	Ton								
111	Coconuts and vegetable oil	Ton								

2. Raw Materials		VOLUME	
Code	Name	Unit	Inventory at the end of month
			(H)
201	Poultry	Ton	
202	Red meat	Ton	
203	Fish and other aquatic animals	Ton	
204	Fruits and vegetables	Ton	

3. Monthly Production Capacity			VOLUME	
Code	Specification	Unit	Capacity (monthly)	
			(I)	
301	Filling capacity of canned / packed fish and other aquatic animals	Ton		
302	Filling capacity of fruit and vegetable sauces	Ton		
303	Milling capacity of flour of potato and wheat	Ton		
304	Canning / bottling capacity of coconuts and vegetable oil	Ton		

(J) Remarks (If there is substantial change in production, shipment or inventory compared to the previous month, please explain why.)

[CONTACT] ASSIST - Philippine Statistical Association, Inc.
 Ma. Celeste M. Molina, Frederick B. Sta. Maria
 Telephone / Facsimile: (02) 715-1448, (02) 924-3986
 [ENUMERATOR] _____ Tel: _____

Note: The Study Team of Japan International Cooperation Agency (JICA) guarantees the confidentiality of all information collected.

Pretest Survey for Development of Current Survey of Production (CSP)

Questionnaire No:	151-10	Sector:	Production, processing and preservation of meat, fish and other seafoods, fruit, vegetables, oils and fats
Establishment ID:		Reference Month / Year:	February / 2001
Please fill out by the 10th day of the next month.			

1. Finished Products			VOLUME							VALUE
Code	Name	Unit	Production (A)		Internal Consumption (X)	Shipment			Inventory at the end of month (F)	Production (1000 pesos) (G)
						Domestic Sales (C)	Export (D)	Others (E)		
101	Dressed / packed poultry	Ton								
102	Dressed / packed red meat	Ton								
103	Preserved / prepared poultry and poultry products	Ton								
104	Preserved / prepared red meat and red meat products	Ton								
105	Canned fish and other aquatic animals	Ton								
106	Packed fish and other aquatic animals	Ton								
107	Smoked / dried fish and other aquatic animals	Ton								
108	Canned / packed fruits	Ton								
109	Fruit and vegetable sauces	Ton								
110	Flour of potato and wheat	Ton								
111	Coconuts and vegetable oil	Ton								

2. Raw Materials		VOLUME	
Code	Name	Unit	Inventory at the end of month
			(H)
201	Poultry	Ton	
202	Red meat	Ton	
203	Fish and other aquatic animals	Ton	
204	Fruits and vegetables	Ton	

3. Monthly Production Capacity			VOLUME	
Code	Specification	Unit	Capacity (monthly)	
			(I)	
301	Filling capacity of canned / packed fish and other aquatic animals	Ton		
302	Filling capacity of fruit and vegetable sauces	Ton		
303	Milling capacity of flour of potato and wheat	Ton		
304	Canning / bottling capacity of coconuts and vegetable oil	Ton		

(J) Remarks (If there is substantial change in production, shipment or inventory compared to the previous month, please explain why.)

[CONTACT] ASSIST - Philippine Statistical Association, Inc.
 Ma. Celeste M. Molina, Frederick B. Sta. Maria
 Telephone / Facsimile: (02) 715-1448, (02) 924-3986
 [ENUMERATOR] Tel:

Note: The Study Team of Japan International Cooperation Agency (JICA) guarantees the confidentiality of all information collected.

Pretest Survey for Development of Current Survey of Production (CSP)

Questionnaire No:	151-10	Sector:	Production, processing and preservation of meat, fish and other seafoods, fruit, vegetables, oils and fats
Establishment ID:		Reference Month / Year:	February / 2001
Please fill out by the 10th day of the next month.			

1. Finished Products			VOLUME							VALUE
Code	Name	Unit	Production (A)	(B)	Internal Consumption (X)	Shipment			Inventory at the end of month (F)	Production (1000 pesos) (G)
						Domestic Sales (C)	Export (D)	Others (E)		
101	Dressed / packed poultry	Ton								
102	Dressed / packed red meat	Ton								
103	Preserved / prepared poultry and poultry products	Ton								
104	Preserved / prepared red meat and red meat products	Ton								
105	Canned fish and other aquatic animals	Ton								
106	Packed fish and other aquatic animals	Ton								
107	Smoked / dried fish and other aquatic animals	Ton								
108	Canned / packed fruits	Ton								
109	Fruit and vegetable sauces	Ton								
110	Flour of potato and wheat	Ton								
111	Coconuts and vegetable oil	Ton								

2. Raw Materials		VOLUME	
Code	Name	Unit	Inventory at the end of month
			(H)
201	Poultry	Ton	
202	Red meat	Ton	
203	Fish and other aquatic animals	Ton	
204	Fruits and vegetables	Ton	

3. Monthly Production Capacity		VOLUME	
Code	Specification	Unit	Capacity (monthly)
			(I)
301	Filling capacity of canned / packed fish and other aquatic animals	Ton	
302	Filling capacity of fruit and vegetable sauces	Ton	
303	Milling capacity of flour of potato and wheat	Ton	
304	Canning / bottling capacity of coconuts and vegetable oil	Ton	

(J) Remarks (If there is substantial change in production, shipment or inventory compared to the previous month, please explain why.)

[CONTACT] ASSIST - Philippine Statistical Association, Inc.
 Ma. Celeste M. Molina, Frederick B. Sta. Maria
 Telephone / Facsimile: (02) 715-1448, (02) 924-3986
 [ENUMERATOR] Tel:

Note: The Study Team of Japan International Cooperation Agency (JICA) guarantees the confidentiality of all information collected.

Pretest Survey for Development of Current Survey of Production (CSP)

Questionnaire No:	151-10	Sector:	Production, processing and preservation of meat, fish and other seafoods, fruit, vegetables, oils and fats
Establishment ID:		Reference Month / Year:	March / 2001
Please fill out by the 10th day of the next month.			

1. Finished Products			VOLUME						VALUE	
Code	Name	Unit	Production (A)	(B)	Internal Consumption (X)	Shipment			Inventory at the end of month (F)	Production (1000 pesos) (G)
						Domestic Sales (C)	Export (D)	Others (E)		
101	Dressed / packed poultry	Ton								
102	Dressed / packed red meat	Ton								
103	Preserved / prepared poultry and poultry products	Ton								
104	Preserved / prepared red meat and red meat products	Ton								
105	Canned fish and other aquatic animals	Ton								
106	Packed fish and other aquatic animals	Ton								
107	Smoked / dried fish and other aquatic animals	Ton								
108	Canned / packed fruits	Ton								
109	Fruit and vegetable sauces	Ton								
110	Flour of potato and wheat	Ton								
111	Coconuts and vegetable oil	Ton								

2. Raw Materials		VOLUME	
Code	Name	Unit	Inventory at the end of month
			(H)
201	Poultry	Ton	
202	Red meat	Ton	
203	Fish and other aquatic animals	Ton	
204	Fruits and vegetables	Ton	

3. Monthly Production Capacity		VOLUME	
Code	Specification	Unit	Capacity (monthly)
			(I)
301	Filling capacity of canned / packed fish and other aquatic animals	Ton	
302	Filling capacity of fruit and vegetable sauces	Ton	
303	Milling capacity of flour of potato and wheat	Ton	
304	Canning / bottling capacity of coconuts and vegetable oil	Ton	

(J) Remarks (if there is substantial change in production, shipment or inventory compared to the previous month, please explain why.)

[CONTACT] ASSIST - Philippine Statistical Association, Inc.
 Ma. Celeste M. Molina, Frederick B. Sta. Maria
 Telephone / Facsimile: (02) 715-1448, (02) 924-3986
 [ENUMERATOR] Tel:

Note: The Study Team of Japan International Cooperation Agency (JICA) guarantees the confidentiality of all information collected.

Pretest Survey for Development of Current Survey of Production (CSP)

Questionnaire No:	151-10	Sector:	Production, processing and preservation of meat, fish and other seafoods, fruit, vegetables, oils and fats
Establishment ID:		Reference Month / Year:	March / 2001
Please fill out by the 10th day of the next month.			

1. Finished Products			VOLUME							VALUE
Code	Name	Unit	Production (A)	(B)	Internal Consumption (X)	Shipment			Inventory at the end of month (F)	Production (1000 pesos) (G)
						Domestic Sales (C)	Export (D)	Others (E)		
101	Dressed / packed poultry	Ton								
102	Dressed / packed red meat	Ton								
103	Preserved / prepared poultry and poultry products	Ton								
104	Preserved / prepared red meat and red meat products	Ton								
105	Canned fish and other aquatic animals	Ton								
106	Packed fish and other aquatic animals	Ton								
107	Smoked / dried fish and other aquatic animals	Ton								
108	Canned / packed fruits	Ton								
109	Fruit and vegetable sauces	Ton								
110	Flour of potato and wheat	Ton								
111	Coconuts and vegetable oil	Ton								

2. Raw Materials		VOLUME	
Code	Name	Unit	Inventory at the end of month
			(H)
201	Poultry	Ton	
202	Red meat	Ton	
203	Fish and other aquatic animals	Ton	
204	Fruits and vegetables	Ton	

3. Monthly Production Capacity			VOLUME	
Code	Specification	Unit	Capacity (monthly)	
			(I)	
301	Filling capacity of canned / packed fish and other aquatic animals	Ton		
302	Filling capacity of fruit and vegetable sauces	Ton		
303	Milling capacity of flour of potato and wheat	Ton		
304	Canning / bottling capacity of coconuts and vegetable oil	Ton		

(J) Remarks (If there is substantial change in production, shipment or inventory compared to the previous month, please explain why.)

[CONTACT] ASSIST - Philippine Statistical Association, Inc.
 Ma. Celeste M. Molina, Frederick B. Sta. Maria
 Telephone / Facsimile: (02) 715-1448, (02) 924-3986
 [ENUMERATOR] Tel:

Note: The Study Team of Japan International Cooperation Agency (JICA) guarantees the confidentiality of all information collected.

**DESCRIPTION OF COMMODITIES (FINISHED PRODUCTS)
SPECIFIED IN THE QUESTIONNAIRE**

Questionnaire No. 151-10 Production, processing and preservation of meat, fish and other seafoods, fruit,
vegetables, oils and fats

Commodity Code	Commodity Name	Description	Unit	PSIC 5-digit
101	Dressed / packed poultry	Includes: dressed and fresh (packed) chicken, gallantina, duck, geese, turkey	Ton	15110
102	Dressed / packed red meat	Includes: fresh (packed) and frozen meat, pork, dressed tripe except poultry	Ton	15110
103	Preserved / prepared poultry and poultry products	Includes: chicken ham, canned chicken	Ton	15120
104	Preserved / prepared red meat and red meat products	Includes: hotdog, cooked ham, bacon, chorizo, corned beef, sausages, other canned or processed meat	Ton	15120
105	Canned fish and other aquatic animals	Includes: canned tuna, sardines, squid, shrimp, mackerel, bonito, herring, shell, other crustaceans and mollusks	Ton	15131
106	Packed fish and other aquatic animals	Includes: packed tuna, sardines, squid, shrimp, mackerel, bonito, herring, shell, other crustaceans and mollusks	Ton	15131
107	Smoked / dried fish and other aquatic animals	Includes: smoked/dried tuna, sardines, squid, shrimp, mackerel, bonito, herring, shell, other crustaceans and mollusks	Ton	15132/15133
108	Canned / packed fruits	Includes: processed/canned banana, pineapple, mango, etc., fruit juices, preserved fruits, fruit cocktail, fruit concentrates, fruit jelly	Ton	15141
109	Fruit and vegetable sauces	Includes: tomato sauce, spaghetti sauce, ketchup, tomato paste and soy sauce	Ton	15143
110	Flour of potato and wheat	Includes: potato flour and wheat flour, other flour products except cassava	Ton	15145
111	Coconuts and vegetable oil	Includes: coconut oil, vegetable oil (e.g. corn oil) other than coconut, and cocoa butter, oil/fat, vegetable shortening, edible oil, acid oil, vegetable lard, cooking oil, margarine	Ton	15152

Reference: 1994 Philippine Standard Industrial Classification.

**REQUEST FOR COMMENTS ON THE SPECIFICATION OF COMMODITIES
IN THE QUESTIONNAIRE**

The questionnaire should cover major commodities of finished products and raw materials in each manufacturing sector of the Philippines.

In order to improve adequacy of the specification of commodities in the questionnaire and to make it easier for you to respond the questionnaire, please concretely fill out your comments or suggestions into the designated column on the "Comment Sheet to the Questionnaire" which will be distributed by the enumerator, and submit it with the questionnaire to the enumerator during the pretest survey period.

Instructions for Filling Out The Questionnaire

**Of
The Pretest Survey
For
The Current Survey of Production (CSP)**

December 2000

JICA Study Team

CONTENTS

<< General Explanation on the Pretest Survey >> -----	1
1. Purpose -----	1
2. Confidentiality -----	1
3. Business Establishments (Factories) to be Surveyed -----	1
4. Respondents to the Questionnaire -----	2
5. Reference Months -----	2
6. Collection of the Questionnaire -----	2
7. Suspension or Closing of Production, Changing of Business or Name of the Factory -----	3
8. Use of Survey Results -----	3
<< How to Fill Out the Questionnaire >> -----	4
<u>A. General Notes</u>	
1. Figures -----	4
2. Units for Measurement -----	4
3. Correction -----	4
<u>B. Survey Items in the Questionnaire</u>	
0. "Establishment ID" and "Reference Month" -----	4
1. Finished Products -----	5
2. Raw Materials -----	8
3. Monthly Production Capacity -----	8
4. Remarks -----	9
5. Comment Sheet to the Questionnaire -----	9

<< General Explanation on the Pretest Survey >>

1. Purpose

The National Statistics Office (NSO) of the Philippines is planning to improve the "Monthly Integrated Survey of Selected Industries (MISSI)" so that the industrial production statistics and direct indicators on a commodity and volume basis are generated in order to meet the growing demand from both public and private sectors.

This pretest survey will be conducted by the JICA (Japan International Cooperation Agency) Study Team with the NSO counterpart team to help planning and design of the "Current Survey of Production (CSP)", which will improve the existing MISSI. Field operation of the pretest survey will be done by enumerators of the ASSIST – Philippine Statistical Association (PSA).

2. Confidentiality

All information furnished by respondents in the pretest survey will be strictly kept confidential by the JICA Study Team. Such information shall not be divulged to any persons except the authorized member/employees of the JICA Study Team, NSO and ASSIST – PSA, nor used as evidence for any purposes of taxation, investigation or regulation.

3. Business Establishments (Factories) to be Surveyed

The pretest survey covers those manufacturing establishments (hereinafter referred to as "factories") that are: (a) producing the commodities specified in the questionnaire and significantly contributing to value-added in each industrial sector; and (b) located in the National Capital Region (NCR) or CALABARZON (Cavite, Laguna, Batangas, Rizal and Quezon) area.

Note that subcontractors are also covered by this survey if they are actually producing the commodities covered by the questionnaire.

4. Respondents to the Questionnaire

Respondents to the pretest survey are basically supposed to be management representatives or equivalent officers of the factories to be surveyed.

Respondents are requested to enter each item in the questionnaire accurately.

5. Reference Months

Under the pretest survey, the reference months are as follows.

<Reference month>		<Collection of questionnaire>
January 2001	→	February 2001
February	→	March
March	→	April

Basically, the "reference month" means the period from the 1st day to the last day of a month to be surveyed. However, you may designate a different period (e.g., from 25th day of a month to the 24th of the next) for your report to the pretest survey, if it is more convenient for you. If you need to designate your own reference period, make sure to consult with the enumerator of the ASSIST-PSA as soon as possible.

Questionnaires for above three reference months are distributed to you at one time in the middle of January 2001. Be careful not to lose the questionnaire. If you lose them, consult with the enumerator as soon as possible.

6. Collection of the Questionnaire

The questionnaire is to be collected by the enumerator between the last day of its reference month and the 10th day of the next month, and then submitted to the JICA Study Team at the NSO by the 15th day of the next month at latest. Please fill out the questionnaire before the 10th day of the next month.

The questionnaire is composed of two copies for each reference month: one is to be submitted to the enumerator during the specified collection period; and the other is to be kept by the respondent for reference.

7. Suspension or Closing of Production, Changing of Business or Name of the Factory

If you suspend production of commodities covered in this survey, close production facilities, or change your business or name of the factory during the three reference months of the pretest survey, notify the enumerator by telephone or indicate so in the "Remarks" column in the questionnaire.

In case of suspension or closing of production, continue to submit the questionnaire as long as you sell the products from remaining inventory at your factory. If you completely close the factory after selling all of inventory, you do not need to submit the questionnaire after the ensuing month. When you resume production, immediately begin to report the questionnaire.

In case of business change, you do not need to submit the questionnaire after the ensuing month.

8. Use of Survey Results

Results of the pretest survey will only be used for planning and design of the CSP by the NSO and the JICA Study Team, and shall not be disseminated to the public.

<< How to Fill Out the Questionnaire >>

A. General Notes

1. Figures

Enter figures precisely and clearly for each line of specified commodity in the questionnaire, based on the designated units of measurement. Use whole numbers only (no decimals).

If your factory does not produce any of the listed commodities, you need not fill out those lines.

2. Units for measurement

Enter figures in accordance with the measurement units designated in the questionnaire. If the units adopted in your factory are different from those specified in the questionnaire, convert the figures so as to be based on the units in the questionnaire.

3. Correction

If you find mistakes in what you have written in the questionnaire after submitting it, promptly notify the enumerator by telephone or facsimile as soon as possible.

B. Survey Items in the Questionnaire

0. "Establishment ID" and "Reference Month"

"Establishment ID" is a unique code to identify your factory, which is to be entered by the enumerator in advance of questionnaire distribution.

When you fill out the questionnaire, confirm the "reference month" first, in order not to enter the questionnaire for different reference month.

1. Finished Products

(A) PRODUCTION (in terms of VOLUME)

Report on the volume (not the value) of production based on the designated unit for each commodity produced at your factory (including production on a contract-basis) during a reference month, according to the following rules.

Refer to the *"Description of commodities (Finished Products) Specified in the Questionnaire"* attached to the questionnaire, which has the detailed commodity names to be considered for each finished product shown in the questionnaire.

- a. Production should be reported regarding products on which final in-house inspection or inspection by outside observers has been completed (= finished products). They shall not include those repaired, remodeled, or reproduced.
- b. Production includes products made for "internal consumption (self-consumption)". Products for internal consumption are those made at your factory and: 1) used for your own purpose (e.g., lathes used as equipment at your factory); or 2) input into another production process as raw materials (e.g., transistors to be integrated into radio receivers).
- c. Do not include those products made by your subcontractors in your own production. Such products are: 1) included in your subcontractor's production if you do not purchase them; or 2) entered in the next column "Purchased/Received" if you purchase them.
- d. Include those products made at your factory on a contract basis in your own production. If you find it difficult to estimate the production volume (not the amount of money received for such subcontract), obtain it from your customer.

(B) PURCHASED/RECEIVED (in terms of VOLUME)

Enter the number of products received or purchased by your factory during the reference month.

"Purchased/Received" include:

- a. Products purchased/imported from other enterprises.

- b. Products transferred from other factories of your enterprise.
- c. Products made or processed by consignees (including subcontractors) and transferred to your factory.

(X) INTERNAL COMSUMPTION (in terms of VOLUME)

Report on the following products in the column "Internal Consumption".

If there is not this column in the questionnaire, you do not need to enter it.

- a. Products made at your factory and: 1) used for your own purpose (e.g., lathes used as equipment at your factory); or 2) input into another production process as raw materials (e.g., transistors to be integrated into radio receivers).

(C) DOMESTIC SALES (in terms of VOLUME)

Report on the following products in the column "Domestic Sales".

- a. Products sold to dealers or other enterprises for resale to domestic consumers.
- b. Products sold to other enterprises as materials for further processing of manufactured goods.
- c. Products transferred to head office, branch offices, etc. for the purpose of domestic sales.

(D) EXPORT (in terms of VOLUME)

Report on the following products in the column "Export".

- a. Products sold to dealers or traders for exporting abroad.
- b. Products transferred to head office, branch offices, etc. for the purpose of export.

(E) OTHERS (in terms of VOLUME)

Report on the following products in the column "Others".

- a. Products transferred to other factories in your enterprise (= intra-firm use).

- b. Products processed or made by your factory on a contract basis and transferred to the factory which ordered you to process (in case your factory is a subcontractor).
- c. Products transferred from your factory to another to be processed or made on a contract basis (in case of you are the parent factory).
- d. Returned products from dealers, traders or other enterprises. This volume shall be negative.

(F) INVENTORY at the end of the reference month (in terms of VOLUME)

Report on the following products in the column "Inventory".

- a. Remaining number of finished products and work-in-process made in, or received by, your factory which are stored in your factory, or in warehouses or other storage sites your factory rents, as of the last day of the reference month.

Note: Regarding the volume to be entered into each commodity item, the following equation should be applied.

$$\begin{aligned}
 & \text{(Inventory at the End of Previous Month + Production + Purchased/Received)} \\
 & - \text{(Internal Consumption + Domestic Sales + Export + Others)} \\
 & = \text{Inventory at the End of the Reference Month}
 \end{aligned}$$

- * If this equation is invalid in your factory, please explain the reason(s) in the "Remarks" column on the questionnaire.

(G) PRODUCTION in terms of VALUE (as evaluated at Producers' Prices = Ex-factory Prices)

"Producers' Prices (= Ex-factory Prices)" mean the establishments' sales prices charged to customers, which include indirect taxes that fall on products when they leave the factory, and wrapping or packing expenses if products are wrapped or packed at your factory. Note that the Producers' Prices exclude loading charges, transportation charges, insurance expenses, and other carrying charges such as unloading charges, warehouse fees, port transportation charges and shipping charges.

2. Raw Materials

(II) INVENTORY at the end of the reference month (in terms of VOLUME)

Report on the volume (not the value) of raw materials specified in the questionnaire according to the following rules.

- a. The volume of raw materials for production of the finished products, which are stored as of the last day of the reference month in your factory or in warehouses or other storage sites your factory rents.
- b. Include the raw materials purchased or received for production on a contract basis.

3. Monthly Production Capacity

(I) MONTHLY PRODUCTION CAPACITY (in terms of VOLUME)

Report on the monthly production capacity of the commodities specified in the questionnaire according to the standards listed below. If it is difficult to know the monthly production capacity precisely, enter the figure equivalent to one-twelfths of the annual production capacity (for the calendar year concerned).

1) General definition of production capacity

In general, production capacity is defined as "production (not actual production figure) that can be obtained using a normal employee work schedule, with existing equipment, and allowing normal downtime for maintenance, repair and cleanup".

2) Standards for evaluating the production capacity

- a. If your factory is operating normally, the production capacity of your factory is assumed to be the maximum output that can be made by existing equipment. If any factors other than production equipment may hinder production, take those into account when evaluating the production capacity.
- b. The production equipment covered is basically the existing production equipment of your factory. However, do not include equipment of which operation has been suspended for overhauling purposes nor equipment of which operation has been suspended prior to upgrading or rehabilitation, even if it is to be used again.

- c. Regarding the operating hours and days, assume normal operating hours and days in your factory. Do not include: 1) one-time increase or decrease in operating hours and days due to a temporary change in the relation of supply and demand; 2) restriction on production due to administrative regulations; and 3) strike. These are the factors that change the rate of operation (=capacity utilization ratio), not the production capacity itself, in a normal sense.
- d. Regarding employees, assume the normal number of workers who operate production equipment or who are engaged in the production process in your factory. Do not include a temporary change in the number of workers in computing for production capacity.

4. Remarks

(J) REMARKS

In any of the following cases, please state reasons.

- a. Substantial change in production, shipment (domestic sales, export and others) or inventory compared to the previous month
- b. Notes on any difficulties in filling out survey items in the questionnaire

5. Comment Sheet to the Questionnaire

The questionnaire should cover major commodities of finished products and raw materials in each manufacturing sector of the Philippines.

In order to improve adequacy of the specification of commodities in the questionnaire and to make it easier for you to respond the questionnaire, please concretely fill out your comments or suggestions into the designated column on the "*Comment Sheet to the Questionnaire*" which will be distributed by the enumerator, and submit it with the questionnaire to the enumerator during the pretest survey period.

(End)