



Photo Number 19 Placement of the pots in the transplantation bed after completion of soil filling



Photo Number 20 Covering with soil after seeding



Photo Number 21 Covering with soil after seeding



Photo Number 22 Sprinkling water after seeding

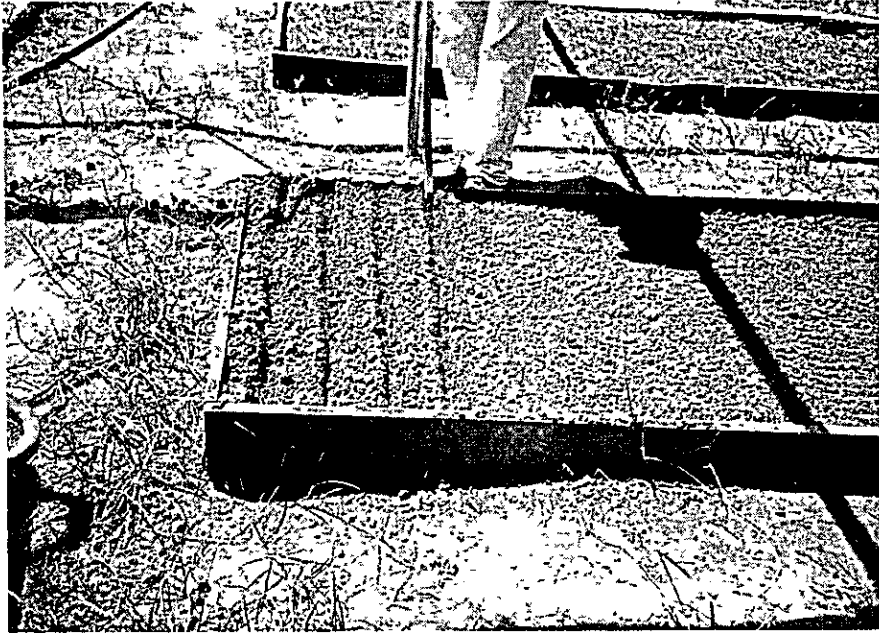


Photo Number 23 Creating ditches for line sowing

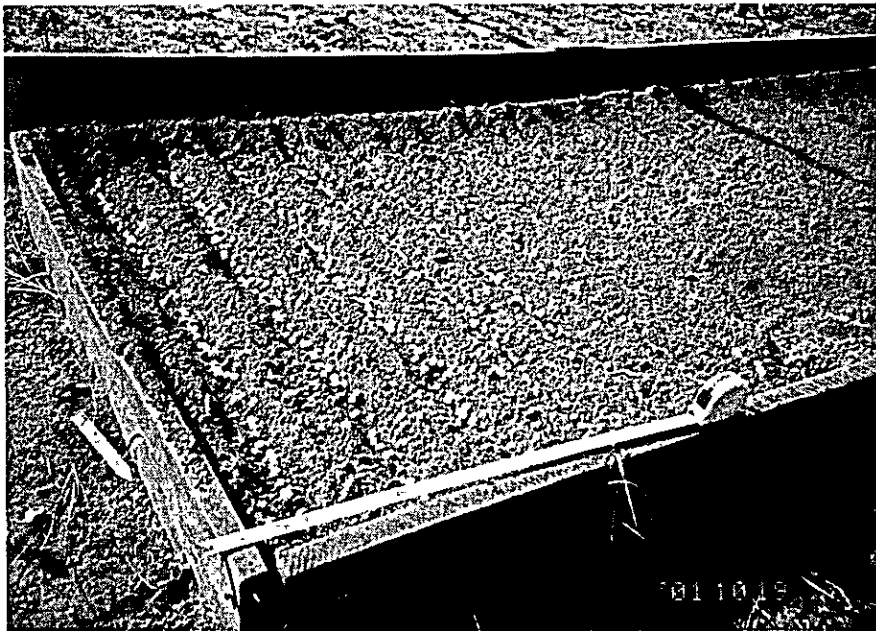


Photo Number 24 Line sowing (seeds of *P. gigante*)



Photo Number 25 Budding of the seeds when transplanting into pots (*E. grandis*)



Photo Number 26 Adjusting the number of leaves prior to transplanting into pots (*E. grandis*)



Photo Number 27 Cutting the tips of longer roots prior to transplanting into pots (*E. grandis*)

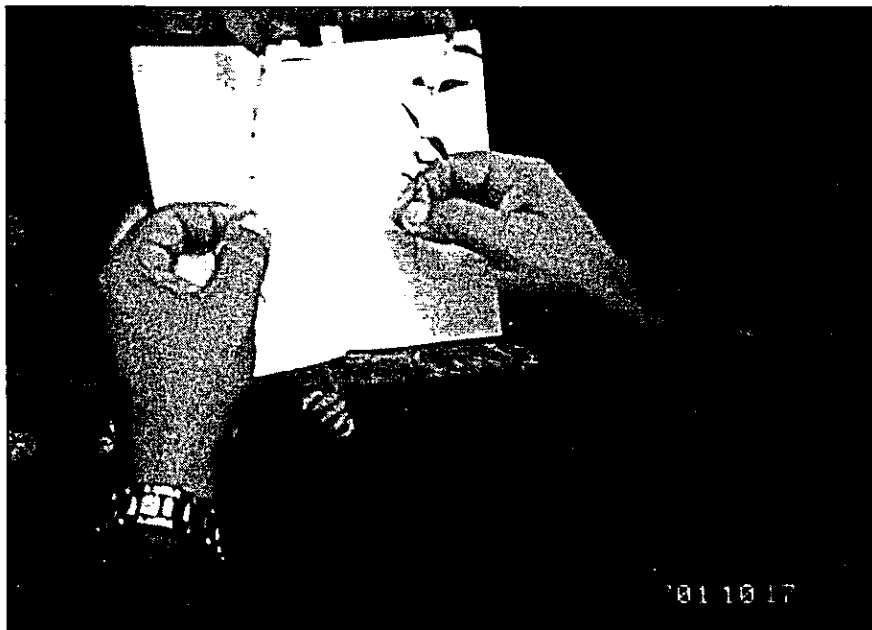


Photo Number 28 Comparison of the seedling after adjusting the leaves and roots prior to transplanting into pots

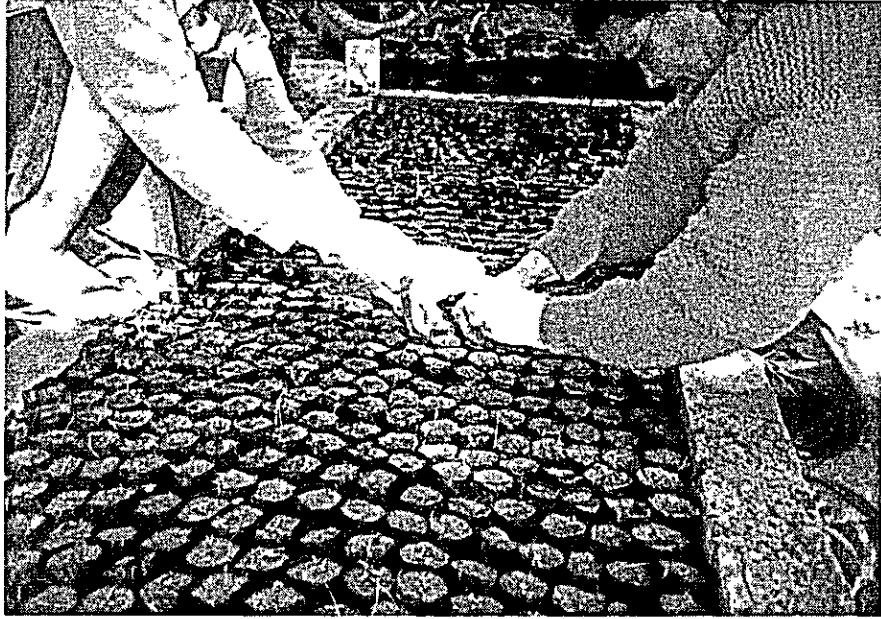


Photo Number 29 Transplanting into pots using a stick



Photo Number 30 Root cutting when reordering into pots



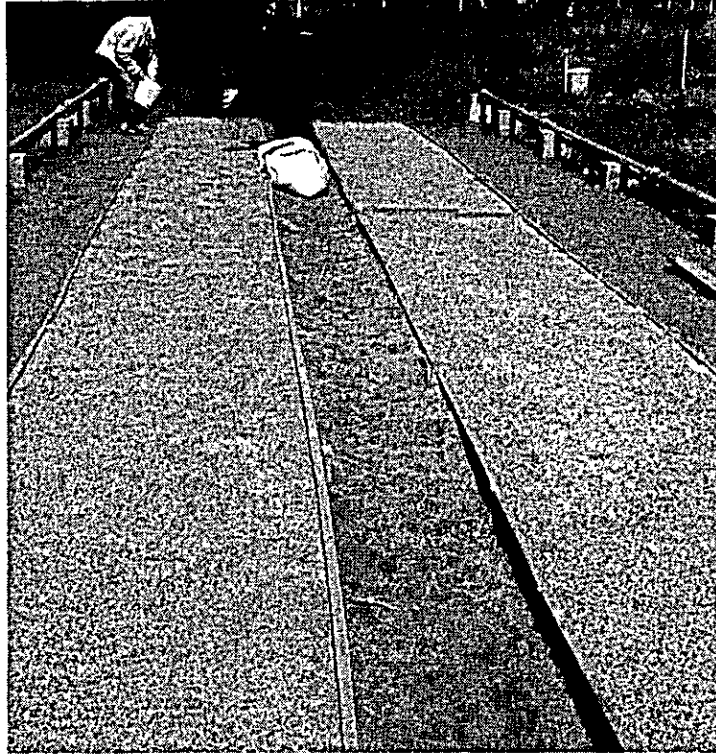


Photo Number 31 Measures guarding the seedling bed from raindrops



Photo Number 32 Transporting the polted seedling to the afforestation area



Photo Number 33 Livestock refuge forest



Photo Number 34 Grevillea windbreak forest (CHACO)





Photo Number 35 Grevillea windbreak forest (CHACO)



Photo Number 36 Leaf cutter ants (large: Ysaú; small Akeke)

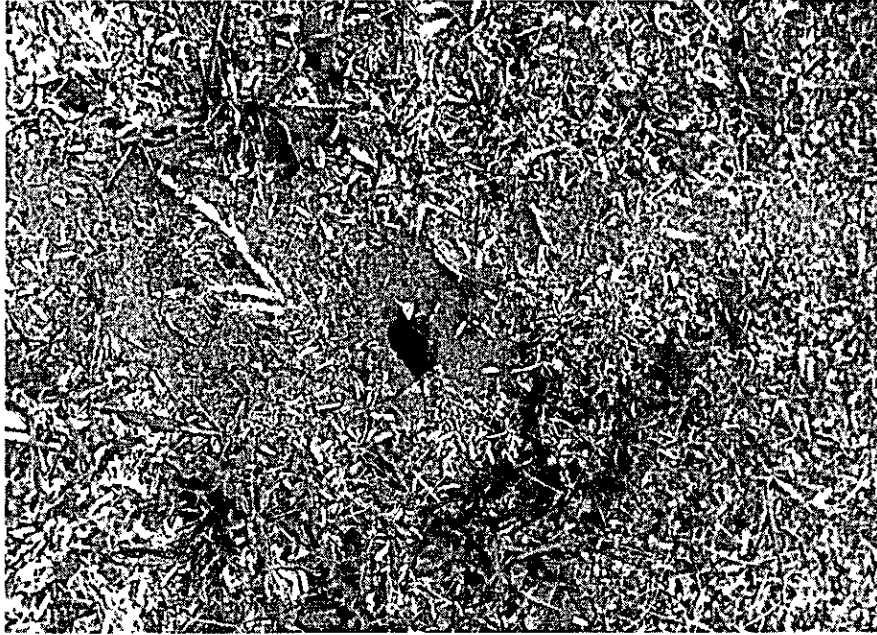


Photo Number 37 Entrance and pathway of a Ysaú colony (the ant is transporting a leaf)

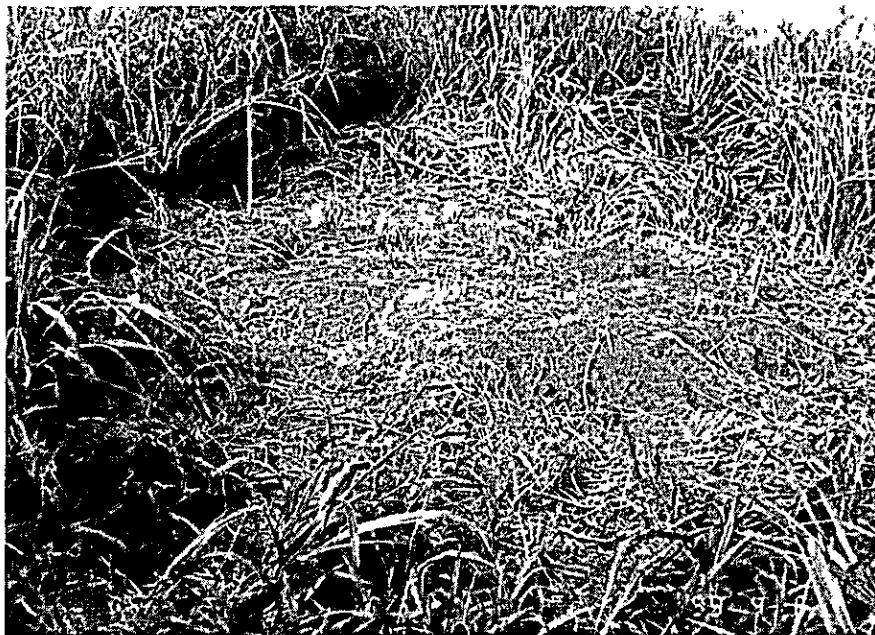


Photo Number 38 Entrance to a Ysaú colony



Photo Number 39 Damage caused by Akeke (*Grevillea*)



Photo Number 40 Damage caused by Akeke (*P. gigante*)



Photo Number 41 Eradicating Ysaú using powder



Photo Number 42 Ant eradicator: Fluramin



Photo Number 43 Eradicating ants using particles (Ysaú)



Photo Number 44 Eradicating ants using liquid (Akeke)



Photo Number 45 Preparation of land using livestock labor

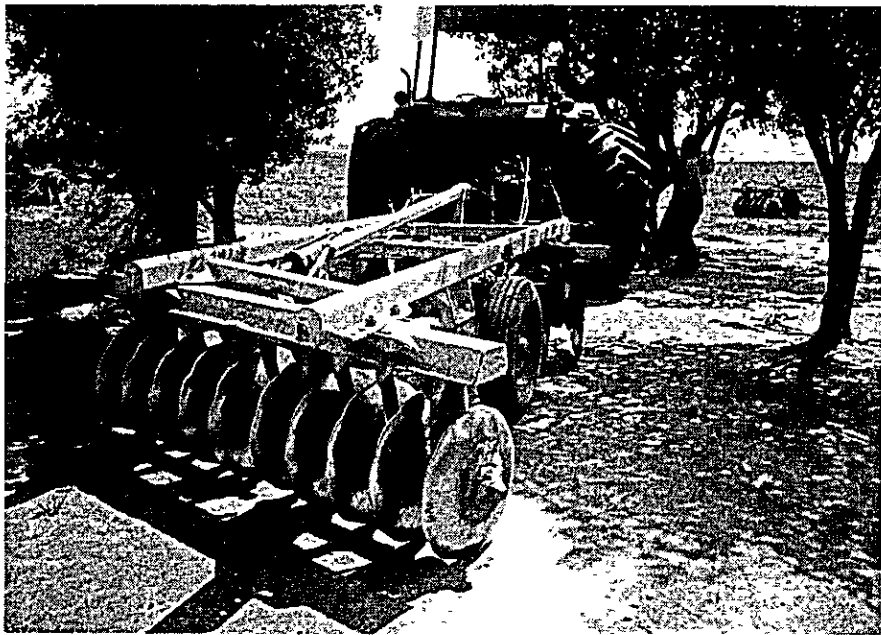


Photo Number 46 Rastrón





Photo Number 47 Preparation of land using Rastrón



Photo Number 48 Rastra

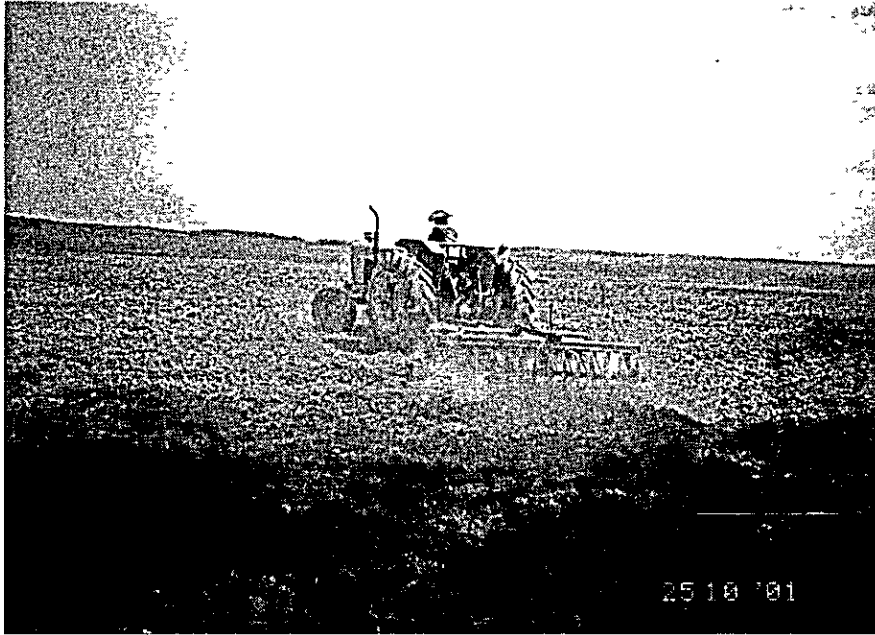


Photo Number 49 Preparation of land using Rastra



Photo Number 50 Status of land use prior to land preparation



Photo Number 51 Situation after ground clearance



Photo Number 52 Taipeada



Photo Number 53 Marking the spots of planting and the planting task



Photo Number 54 Digging a hole to plant a seedling

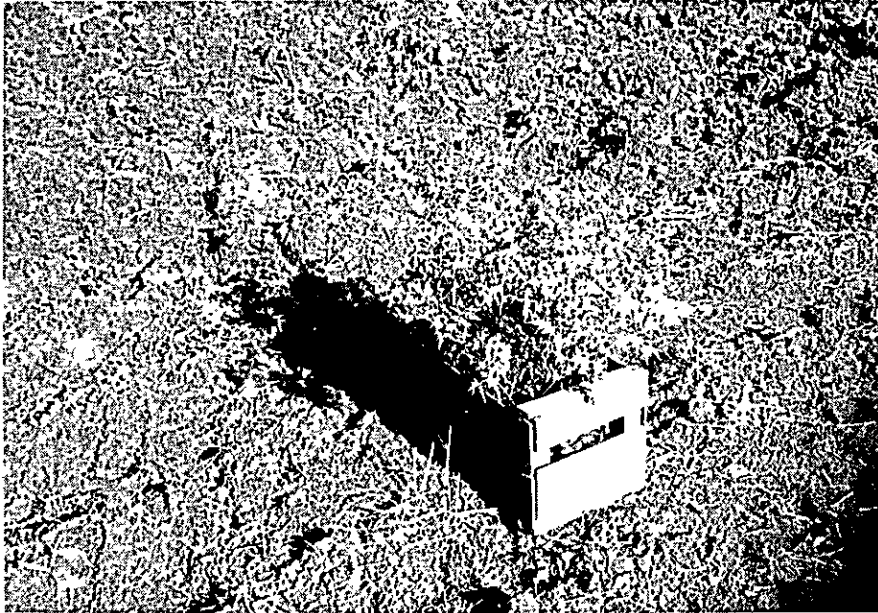


Photo Number 55 Example of a box for transporting small numbers of potted seedling upon planting



Photo Number 56 Lightly stepping around the seedling after planting the potted seedling



Photo Number 57 Weeding using Rastra



Photo Number 58 Weeding using Rotativo





Photo Number 59 Quadrat weeding using manual labor



Photo Number 60 Pruning



Photo Number 61 Damage to *P. gigante* due to disease



Photo Number 62 Damage to *P. gigante* due to disease



Photo Number 63 Damage to young trees due to fire (*E. camaldulensis*)



Photo Number 64 Fire break that has been dug up



Photo Number 65 Example of agro-forestry (combination of *P. gigante* and cotton)



Photo Number 66 Example of agro-forestry (combination of *P. gigante* and Maíz)

