

Semi_detailed_survey_area

Geological Section Lines

Ore deposits and Prospects

● Porphyry-Cu

● Porphyry-Cu, Mo

● Porphyry-Cu, Au

■ Vein and Irregular-Cu

● Vein-Mo

■ Vein-Au

● Vein-Ag, Pb, Zn

● Vein-Sb

■ Vein and Irregular-Fe

▲ Vein and Irregular-Mn

● Unknown-Cu

● Unknown-Au

● Unknown-Ag, Pb, Zn

Zn (geochem. + ore assay)

● 224 - 2005 (ppm)

● 143 - 223

● 74 - 142

● 29 - 73

● 1 - 28

Geomap_Putre_W

Qal (Recent sediments)

Qv (Quaternary-Tertiary volcanics)

Qvr (Quaternary-Tertiary ignimbrite)

TQc (Quaternary-Tertiary conglomerate)

Tig (Miocene-Pliocene ignimbrite)

Kc(i) (Cretaceous sediments)

Intrusive rocks

Tgd (Tertiary granodiorite)

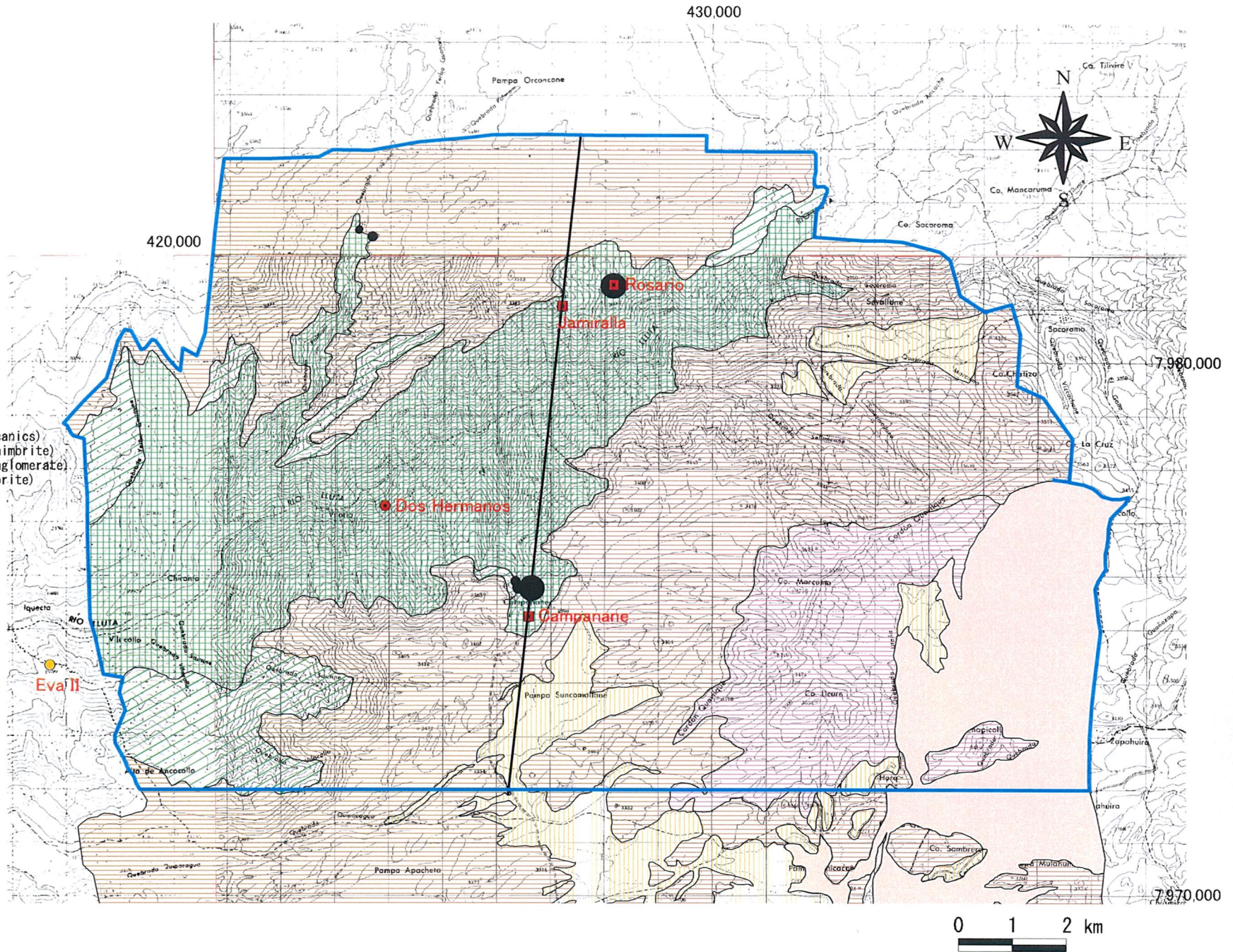


Fig. 2-2-99 (5) Geochemical Anomaly Map in the Area to the West of Putre (Zn)

上記各鉱徴地は、空中磁気の間接強度帯、及び短波長低異常域周縁部の重なる部分に位置する。これらの鉱徴地分布域に空中磁気の中波長異常域は存在しない。