

Semi\_detailed\_survey\_area

Geological Section Lines

Ore deposits and Prospects

- Porphyry-Cu
- Porphyry-Cu, Mo
- Porphyry-Cu, Au
- Vein and Irregular-Cu
- Vein-Mo
- Vein-Au
- Vein-Ag, Pb, Zn
- Vein-Sb
- Vein and Irregular-Fe
- Vein and Irregular-Mn
- Unknown-Cu
- Unknown-Au
- Unknown-Ag, Pb, Zn

Cu (geochem. + ore assay)

- 38681 - 62830 (ppm)
- 10597 - 38680
- 2021 - 10596
- 582 - 2020
- 261 - 581
- 85 - 260
- 1 - 84

Geomap\_Putre\_W

- Qal (Recent sediments)
- Qv (Quaternary-Tertiary volcanics)
- Qvr (Quaternary-Tertiary ignimbrite)
- TQc (Quaternary-Tertiary conglomerate)
- Tig (Miocene-Pliocene ignimbrite)
- Kc(i) (Cretaceous sediments)
- Intrusive rocks
- Tgd (Tertiary granodiorite)

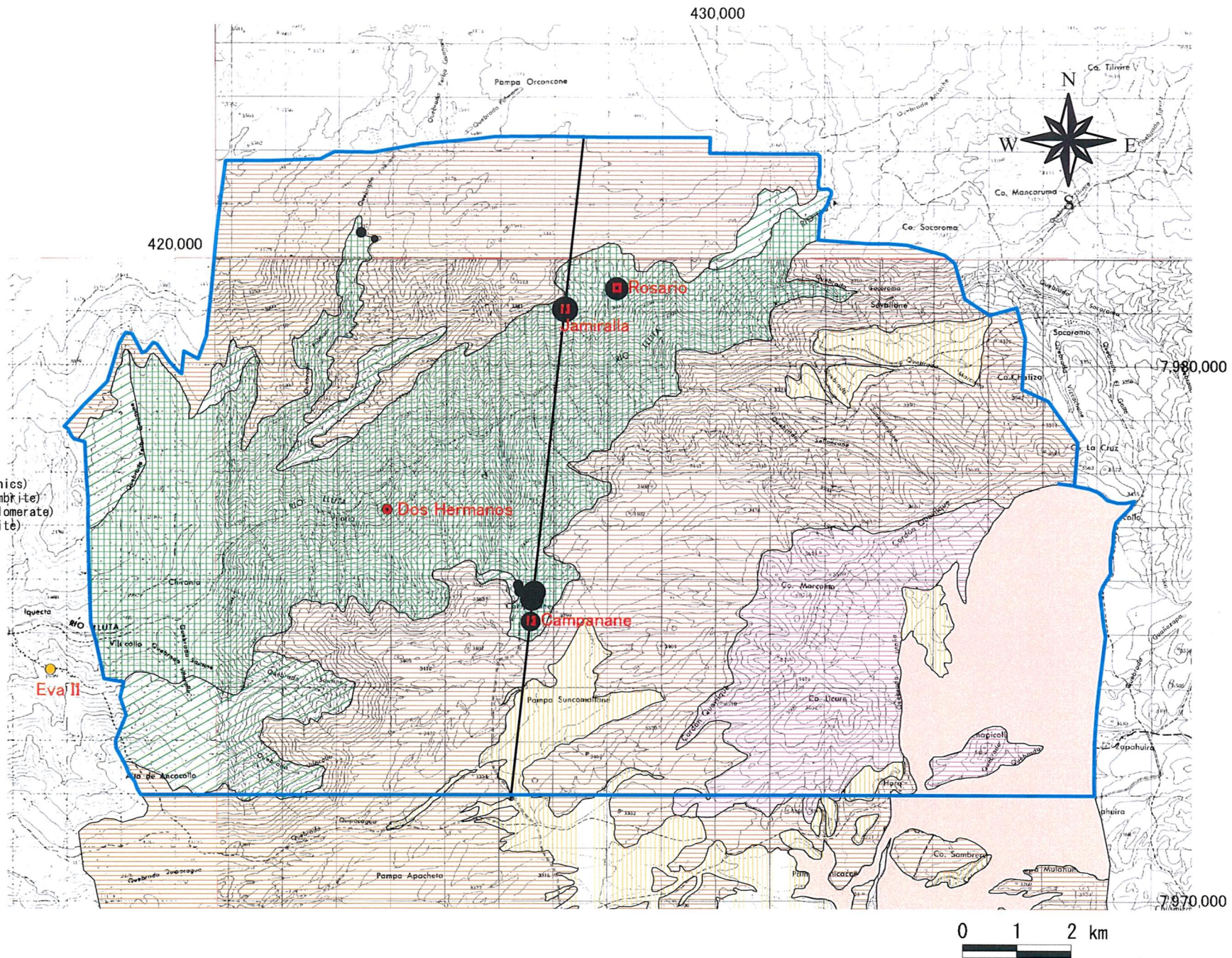


Fig. 2-2-99 (3) Geochemical Anomaly Map in the Area to the West of Putre (Cu)