

Semi_detailed_survey_area

Geological Section Lines

Ore deposits and Prospects

● Porphyry-Cu

● Porphyry-Cu, Mo

● Porphyry-Cu, Au

● Vein and Irregular-Cu

● Vein-Mo

● Vein-Au

● Vein-Ag, Pb, Zn

● Vein-Sb

● Vein and Irregular-Fe

● Vein and Irregular-Mn

● Unknown-Cu

● Unknown-Au

● Unknown-Ag, Pb, Zn

Ag (geochem. + ore assay)

● 79.10 - 314.00 (ppm)

● 14.10 - 79.00

● 7.10 - 14.00

● 1.10 - 7.00

● 0.05 - 1.00

Geomap_Putre_W

Qal (Recent sediments)

Qv (Quaternary-Tertiary volcanics)

Qvr (Quaternary-Tertiary ignimbrite)

TQc (Quaternary-Tertiary conglomerate)

Tig (Miocene-Pliocene ignimbrite)

Kc(i) (Cretaceous sediments)

Intrusive rocks

Tgd (Tertiary granodiorite)

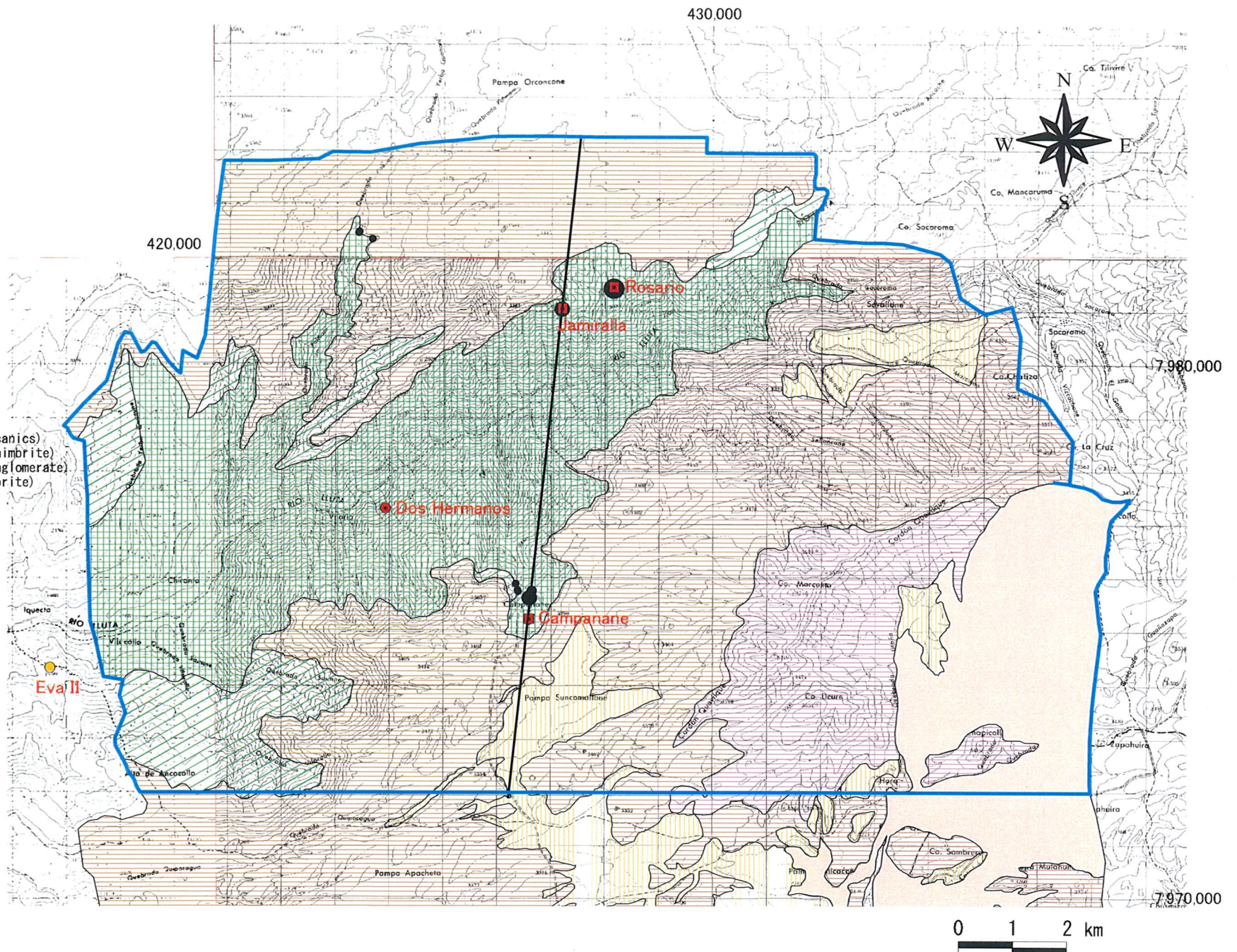


Fig. 2-2-99 (2) Geochemical Anomaly Map in the Area to the West of Putre (Ag)