

- Alteration
 - Silicification
 - Acid alteration
 - Sericitization
 - Propylitization
 - Potassic alteration
 - Tourmalinization
 - none
- Alteration zone (from TM images)
- Semi_detailed_survey_area
- Geomap_Putre_W
 - Qal (Recent sediments)
 - Qv (Quaternary-Tertiary volcanics)
 - Qvr (Quaternary-Tertiary ignimbrite)
 - TQc (Quaternary-Tertiary conglomerate)
 - Tig (Miocene-Pliocene ignimbrite)
 - Kc(i) (Cretaceous sediments)
 - Intrusive rocks
 - Tgd (Tertiary granodiorite)

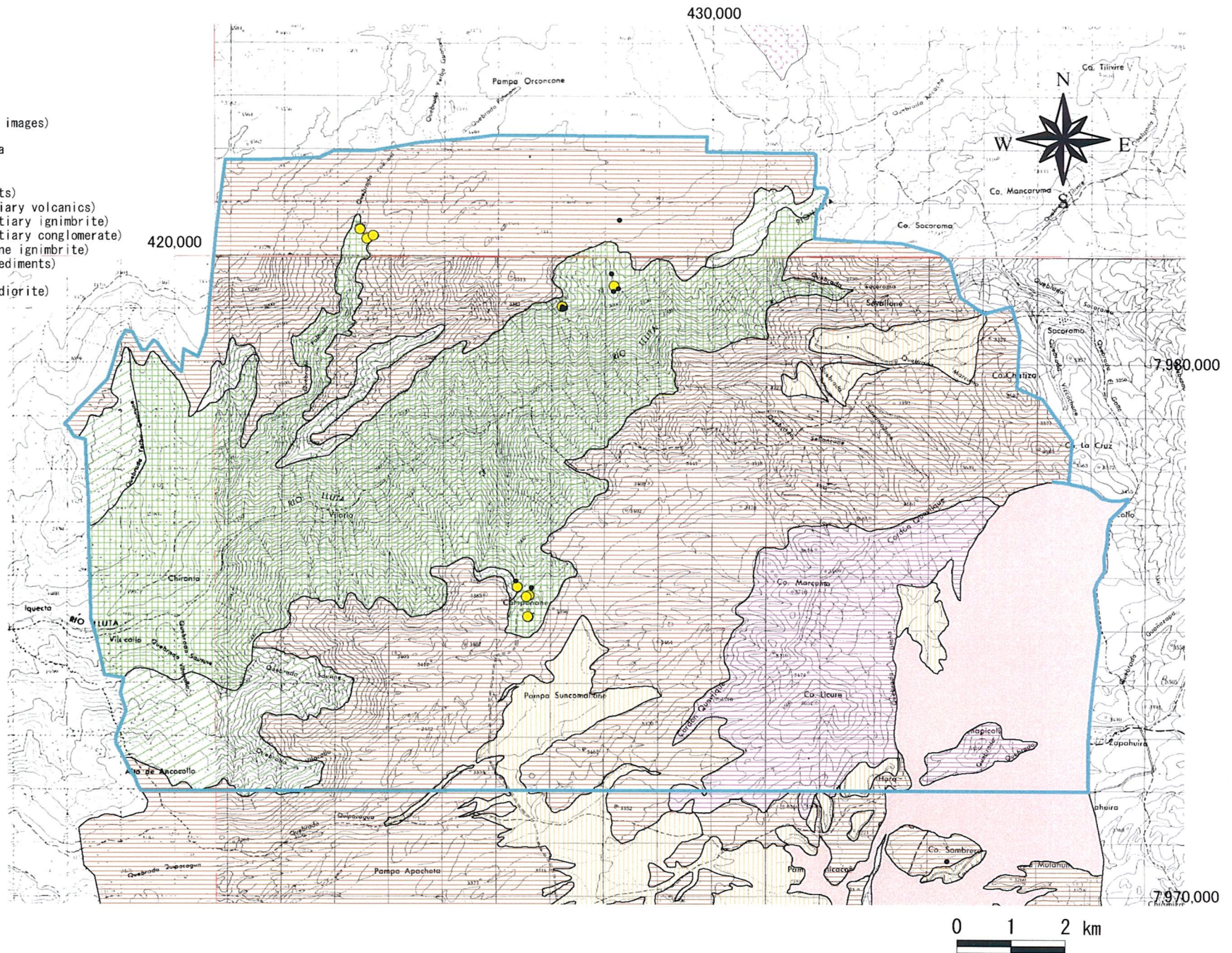


Fig. 2-2-98 Distribution Map of Alteration Minerals at the Area to the West of Putre