

Geologic Time		Columnar Section	Lithology	Intrusives	Mineralization
CENOZOIC	QUATERNARY HOLOCENE	Gal	Alluvium		Porphphy copper type (py, sericite, tourmaline)
	QUATERNARY ~ TERTIARY	Qv	Basalt lava		
		Qvr	Pumice tuff		
		TQe	Conglomerate		
TERTIARY	PLIOCENE ~ MIOCENE	Tig	Welded tuff		
	PALEOGENE			Granodiorite (Tgd) ↑	
		MESOZOIC			
CRETACEOUS	LATE				
	EARLY	Ke(i) Tgd	Sandstone		

Fig.2-2-96 Schematic Stratigraphic Columns and Profiles of the Area to the West of Putre

- Mineralization
- Pyritization
 - Cu-oxide
 - Cu-sulfide
 - Molybdenite
 - Oxidation
 - Native sulfur
 - Barite-limonite vein
 - none
- Semi_detailed_survey_area

- Geomap_Putre_W
- Qal (Recent sediments)
 - Qv (Quaternary-Tertiary volcanics)
 - Qvr (Quaternary-Tertiary ignimbrite)
 - TQc (Quaternary-Tertiary conglomerate)
 - Tig (Miocene-Pliocene ignimbrite)
 - Kc(i) (Cretaceous sediments)
 - Intrusive rocks
 - Tgd (Tertiary granodiorite)

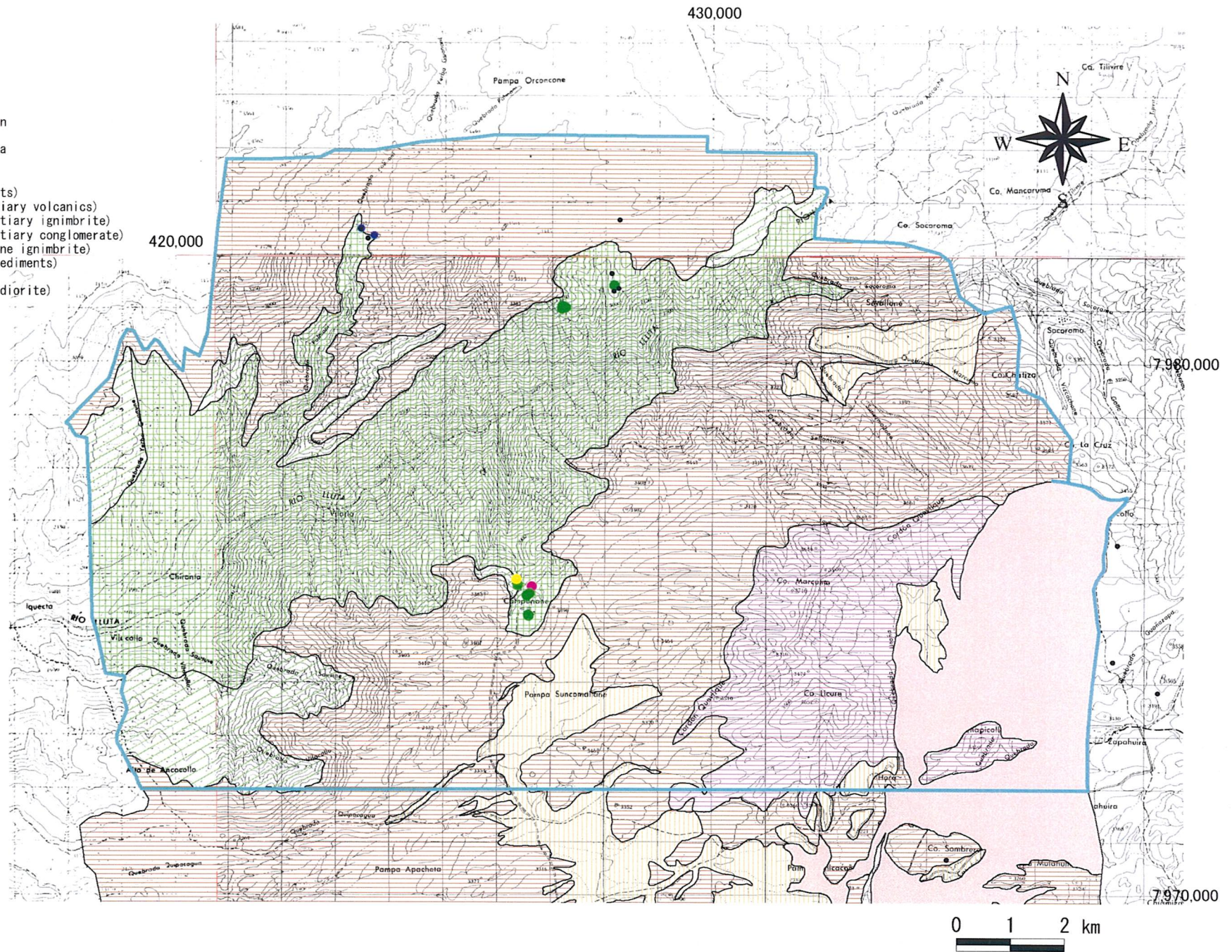


Fig. 2-2-97 Mineralization Map of the Area to the West of Putre