

| Geologic Time | | Columnar Section | Lithology | Intrusives | Mineralization |
|---------------|------------|---------------------------|-----------|---------------------------------------|--|
| CENOZOIC | QUATERNARY | HOLOCENE | Qal | | Vein type (Cu, Pb), Skarn (contact metamorphism) ↑ |
| | TERTIARY | PLIOCENE ~ MIOCENE | Tig | Welded tuff Pumice tuff | |
| | | MIOCENE ~ OLIGOCENE | Tc | Conglomerate | |
| | | EARLY | | | |
| MESOZOIC | CRETACEOUS | LATE | | Granodiorite (Kgd) ↑ Granite (G) ↑ | |
| | | EARLY | Kc(i) | | Sandstone |
| | JURASSIC | LATE | Jm(m) | | Alternation of marble and shale |

Fig.2-2-91 Schematic Stratigraphic Columns and Profiles of the Area to the East of Arica

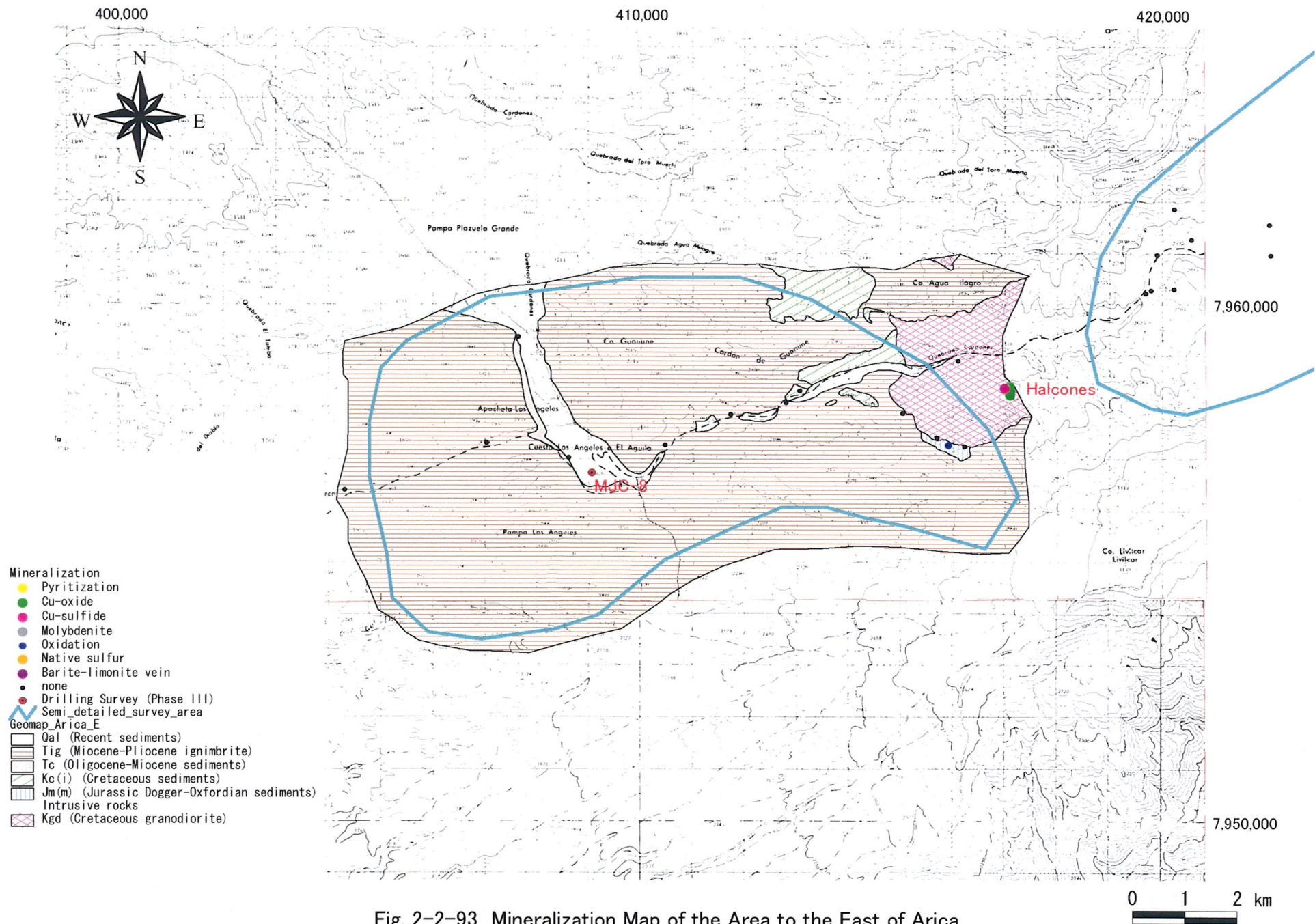


Fig. 2-2-93 Mineralization Map of the Area to the East of Arica