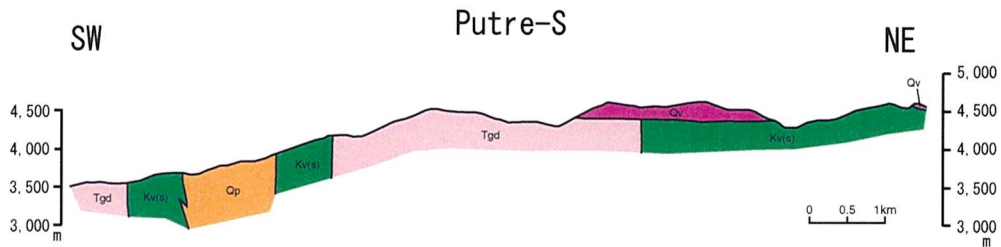


- Semi_detailed_survey_area
- Geological Section Lines
- Medium wavelength high anomaly
- Medium wavelength low anomaly
- Short wavelength high anomaly
- Short wavelength low anomaly
- Intermediate RTP (24, 475–24, 525 nT)
- Geomap_Putre_S
- Qal (Recent sediments)
- Qv (Quaternary-Tertiary volcanics)
- Qvr (Quaternary-Tertiary ignimbrite)
- Kv(s) (Cretaceous volcanics)
- Intrusive rocks
- Qp (Quartz porphyry)
- Di, Dip (Diorite, Diorite porphyry)
- Tgd (Tertiary granodiorite)



Fig. 2-2-83 Geological Map of the Area to the South of Putre



Geologic Time		Columnar Section	Lithology	Intrusives	Mineralization
CENOZOIC	QUATERNARY HOLOCENE	Qal	Alluvium		Porphyry copper type? (py, sericite, silica) Epithermal type (silica, kaolin) ↑
	QUATERNARY ~ LATE TERTIARY	Qv	Basaltic ~ andesitic lava		
		Qw	Welded tuff Tuff breccia		
	MIDDLE~EARLY TERTIARY				
MESOZOIC	LATE CRETACEOUS	Tgd, Qp, Kv(s), Dip, Kw(s)	Andesitic ~ basaltic lava	Grandiorite (Tgd) ↑ Quartz porphyry (Qp) ↑ Diorite (Di) ↑ Diorite porphyry (Dip) ↑	

Fig.2-2-84 Schematic Stratigraphic Columns and Profiles of the Area to the South of Putre