

Geologic Time		Columnar Section	Lithology	Intrusives	Mineralization	
CENOZOIC	QUATERNARY	HOLOCENE	Qal	Alluvium		
	QUATERNARY ~ TERTIARY	Qv	Basalt lava			
		Qvc	Conglomerate Sandstone			
		Qvr	Welded tuff Pumice tuff			
TERTIARY	EARLY					
MESOZOIC	CRETACEOUS	LATE				
		EARLY	Kv(i), Di, Kgd	Andesitic ~ basaltic lava/ volcanicalstics	Granodiorite (Kgd) ↑ Diorite, diorite porphyry (Di) ↑ Quartz porphyry (Qp) ↑	Porphry copper type (py, serfite) ↑ Vein type (Cu) ↑
	JURASSIC	LATE	Kc(i)	Sandstone, shale		
			Jm(s)	Sediments		

Fig.2-2-63 Schematic Stratigraphic Columns and Profiles of the Camina Area



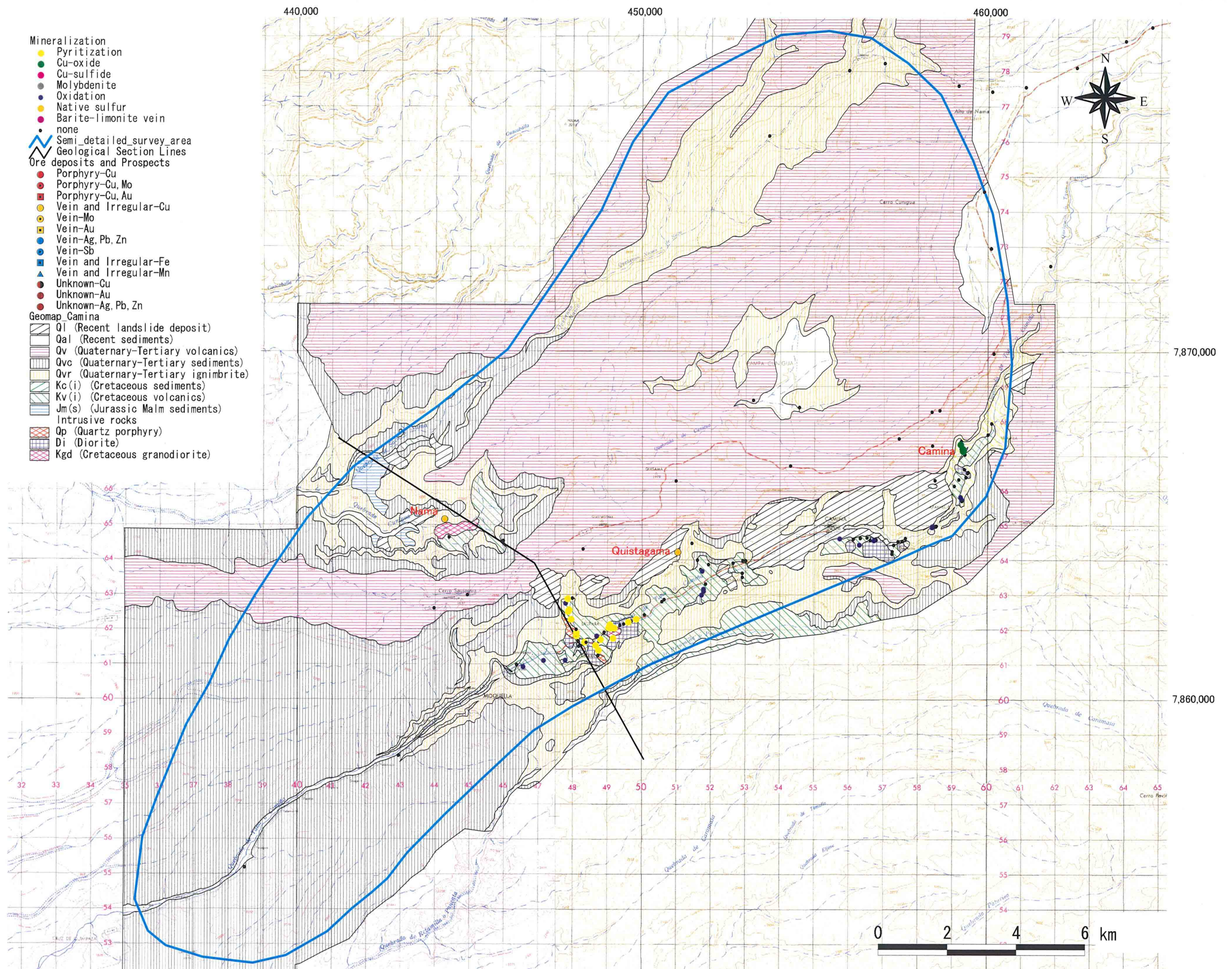


Fig. 2-2-64 Mineralization Map of the Camina Area