

- Mineralization
- Pyritization
 - Cu-oxide
 - Cu-sulfide
 - Molybdenite
 - Oxidation
 - Native sulfur
 - Barite-limonite vein
 - none
- Semi_detailed_survey_area
 Geomap_Chusmisa_NE
 alteration zone
 Qv (Quaternary-Tertiary volcanics)
 Qvr (Quaternary-Tertiary ignimbrite)
 Tig (Miocene-Pliocene ignimbrite)
 Intrusive rocks
 Dk2 (Dike rocks)

Fig. 2-2-57 Mineralization Map of the Area to the Northeast of Chusmisa

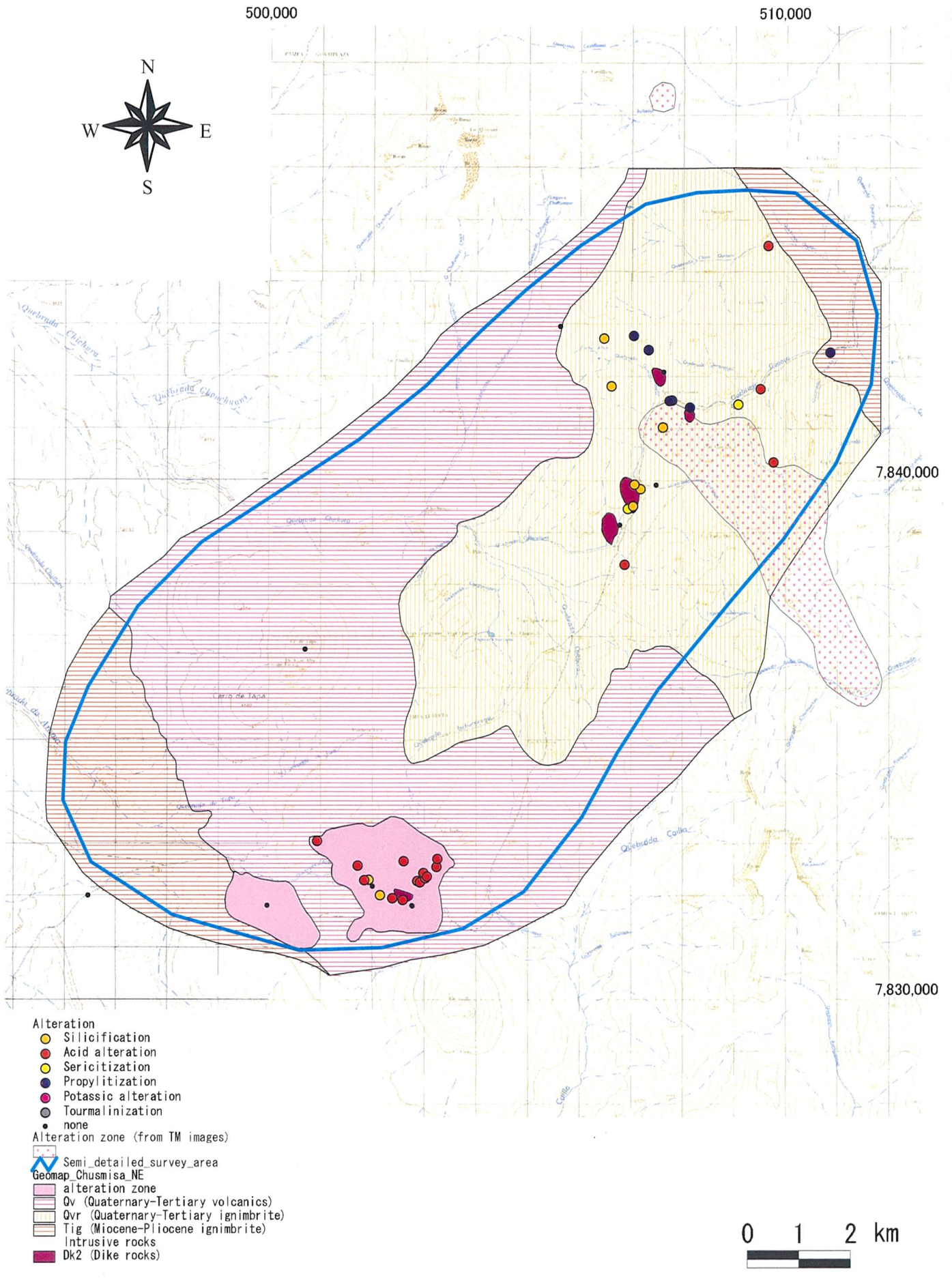


Fig. 2-2-58 Distribution Map of Alteration Minerals at the Area to the Northeast of Chusmisa