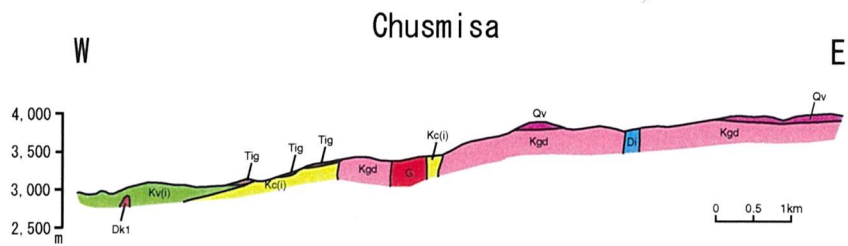


Fig. 2-2-50 Geological Map of the Chusmisa Area





Geologic Time		Columnar Section	Lithology	Intrusives	Mineralization	
CENOZOIC	QUATERNARY	HOLOCENE		Alluvium	Porphyry copper type ↑	
	QUATERNARY ~ TERTIARY			Basalt lava		
	TERTIARY	PLIOCENE ~ MIOCENE				Welded tuff Pumice tuff
		MIOCENE ~ OLIGOCENE				Conglomerate
		PALEOGENE				
MESOZOIC	CRETACEOUS	LATE		Andesitic ~ basaltic lava/ volcaniclastics		
		EARLY		Tuffaceous sand- stone, mudstone, fine-grained conglomerate		

Fig.2-2-51 Schematic Stratigraphic Columns and Profiles of the Chusmisa Area