

Geologic Time		Columnar Section	Lithology	Intrusives	Mineralization
CENOZOIC	QUATERNARY	HOLOCENE	Talus Alluvium		
	TERTIARY	PLIOCENE ~ MIOCENE	Welded tuff Pumice tuff		
		MIOCENE ~ OLIGOCENE	Conglomerate Basalt		
		PALEOGENE			
MESOZOIC	CRETACEOUS	LATE		Granodiorite (Kgd) ↑ Diorite (Di) ↑	pyrite, barite
		EARLY	Andesitic lava/ volcaniclastics		

Fig.2-2-46 Schematic Stratigraphic Columns and Profiles of the Pachica Area

201 217

— 279 —

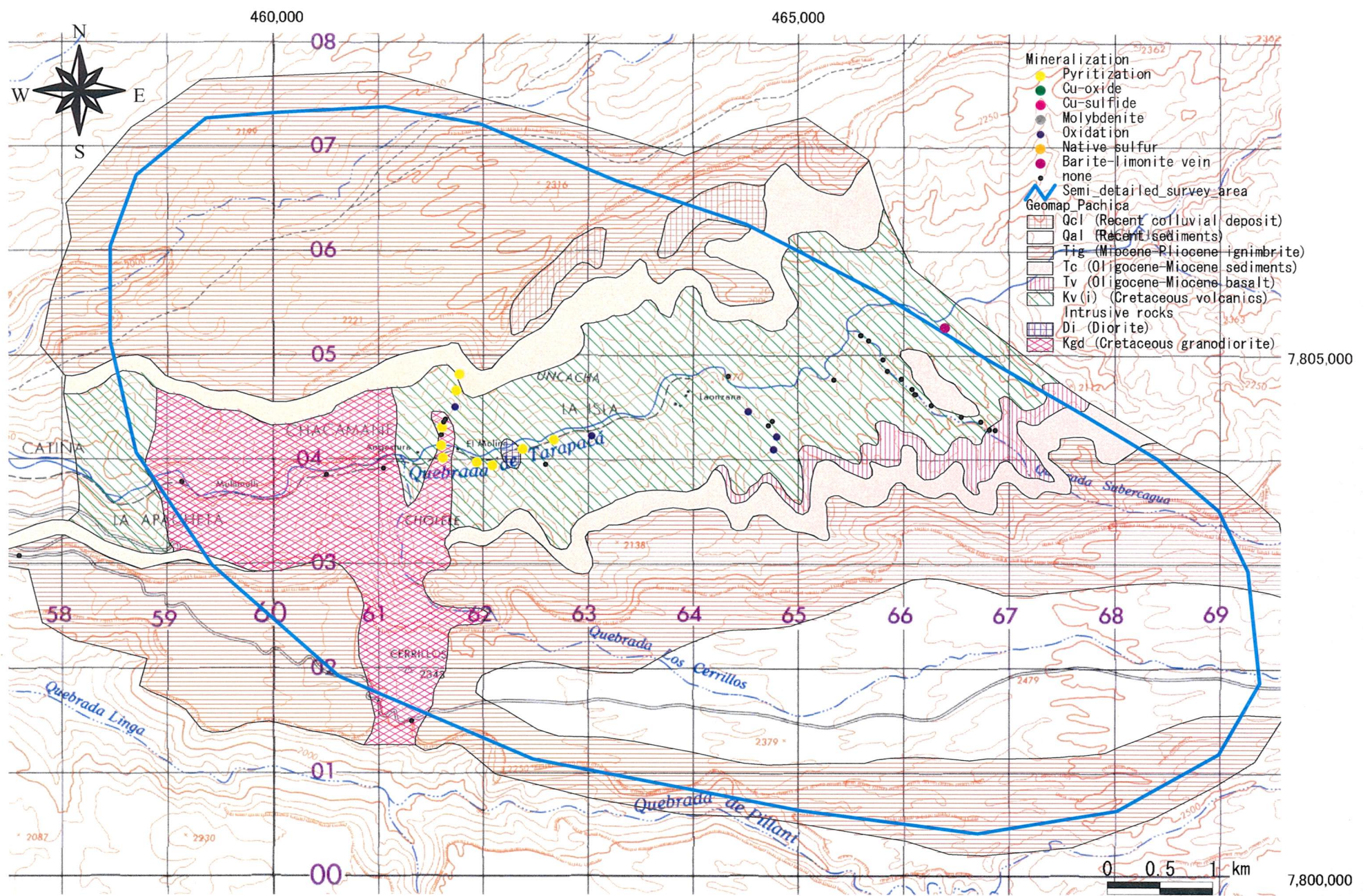


Fig. 2-2-47 Mineralization Map of the Pachica Area