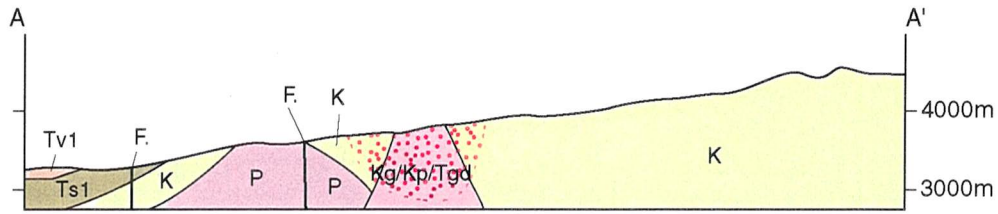
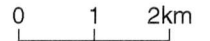
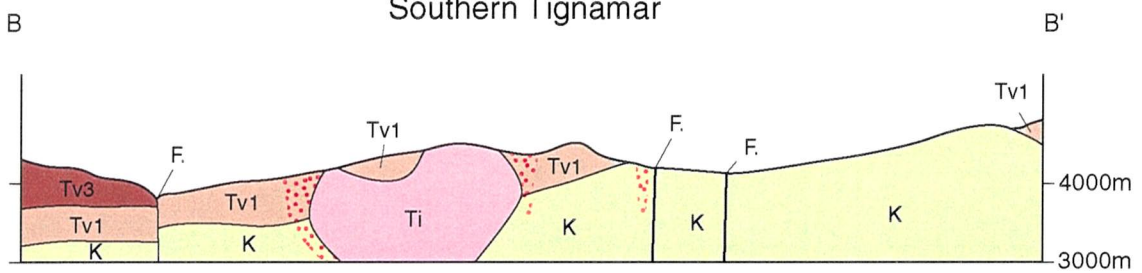


Northern Tignamar

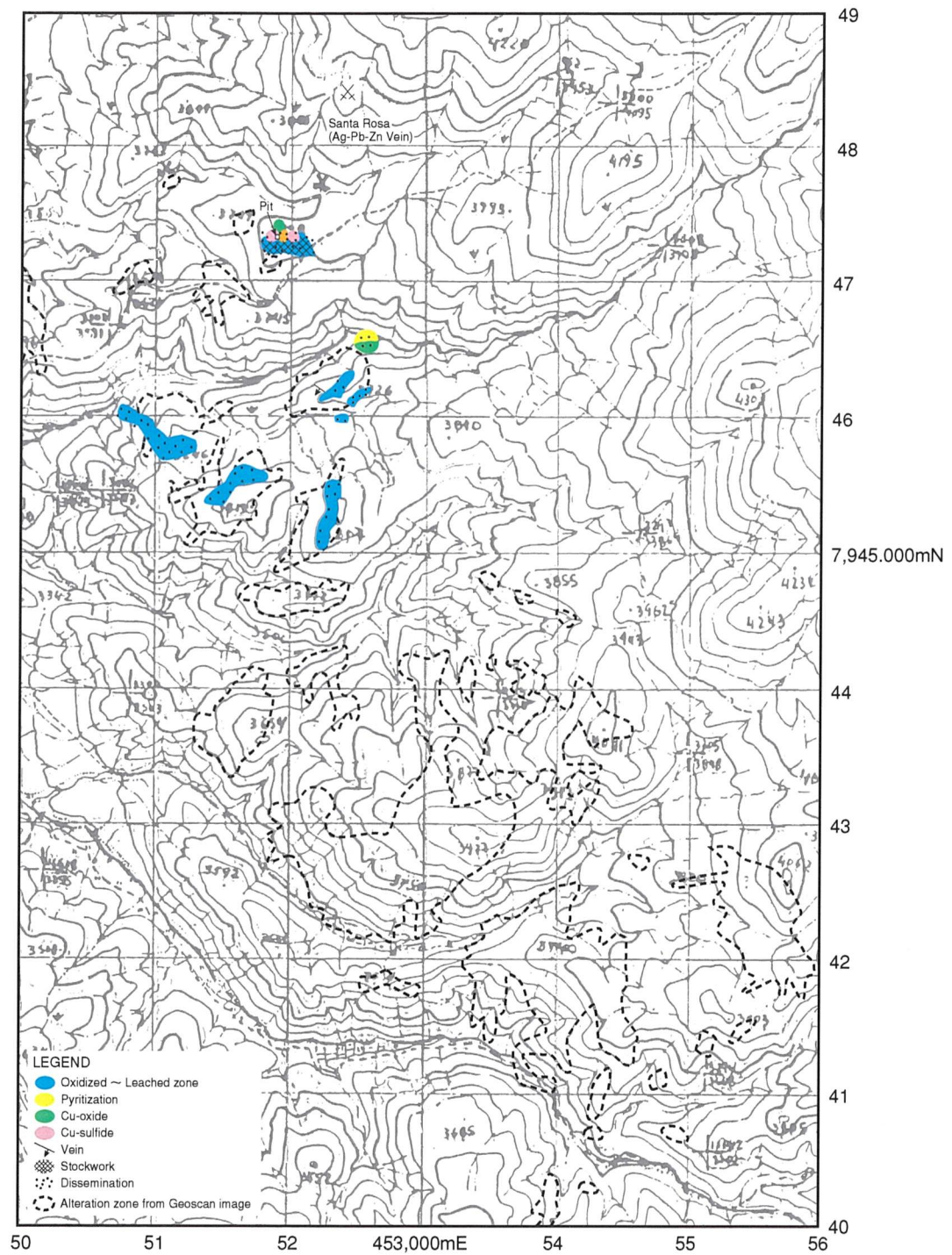


Southern Tignamar

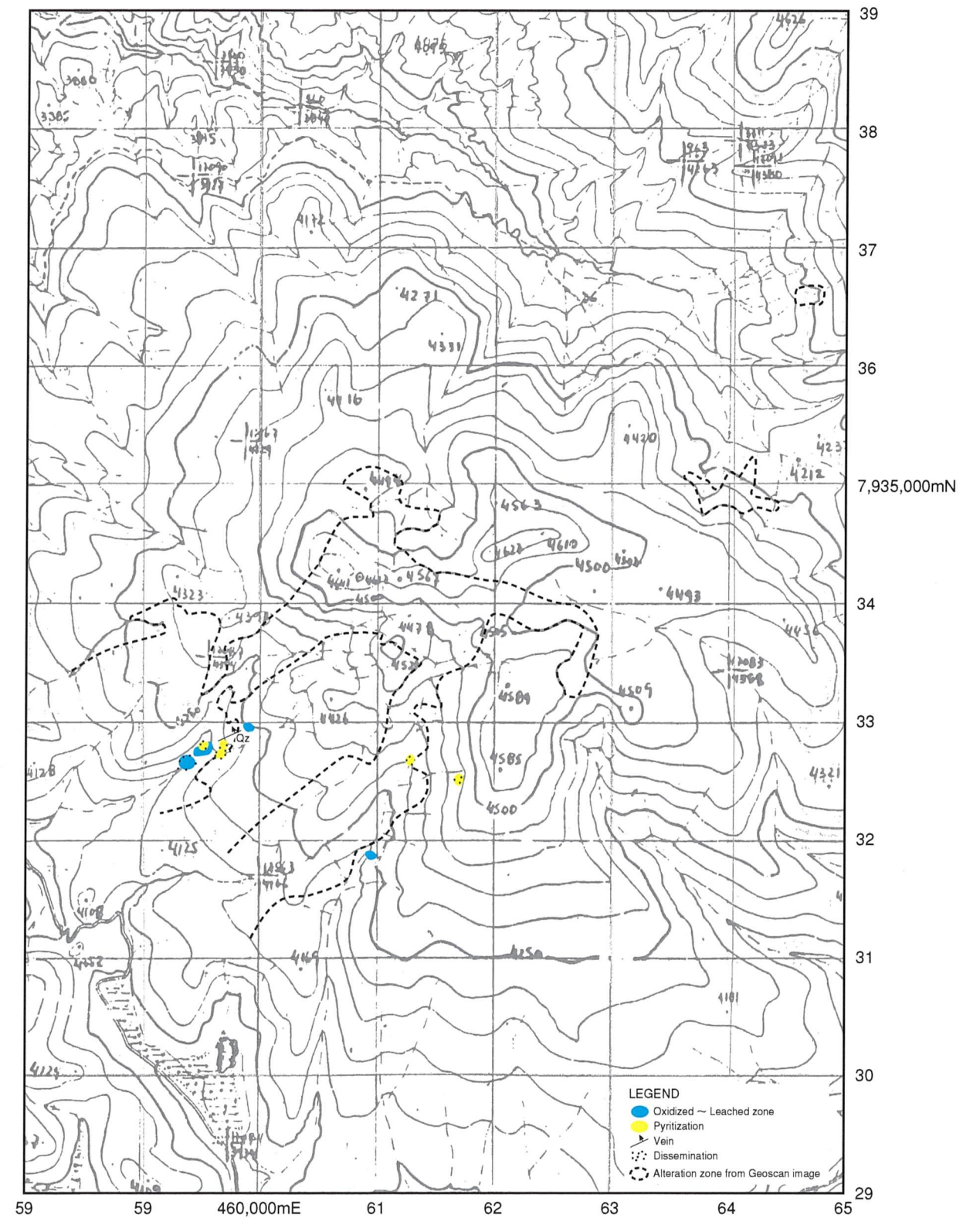


Geologic Time		Columnar Section	Lithology	Intrusives	Mineralization
CENOZOIC	QUATERNARY - LATE TERTIARY		Andesitic ~ basaltic lava/volcaniclastics	Dacite, Porphyry (Ti) ↑ Granodiorite, Porphyry (Kg/Kp/Tgd)	Epithermal type --- Porphyry copper type ↑
	LATE TERTIARY		Rhyolitic ~ basaltic lava/volcaniclastics, Intercalation of continental sediments		
	EARLY TERTIARY				
MESOZOIC	EARLY TERTIARY - LATE CRETACEOUS		Andesitic ~ rhyolitic lava/volcaniclastics Intercalation of continental sediments		
			Gneiss, Metamorphosed sedimentary and volcanic rocks		
PALEOZOIC					

Fig. 2-2-32 Schematic Stratigraphic Columns and Profiles of the Tignamar Area



Northern Tigramar



Southern Tigramar

Fig. 2-2-33 Mineralization Map of the Tigramar Area