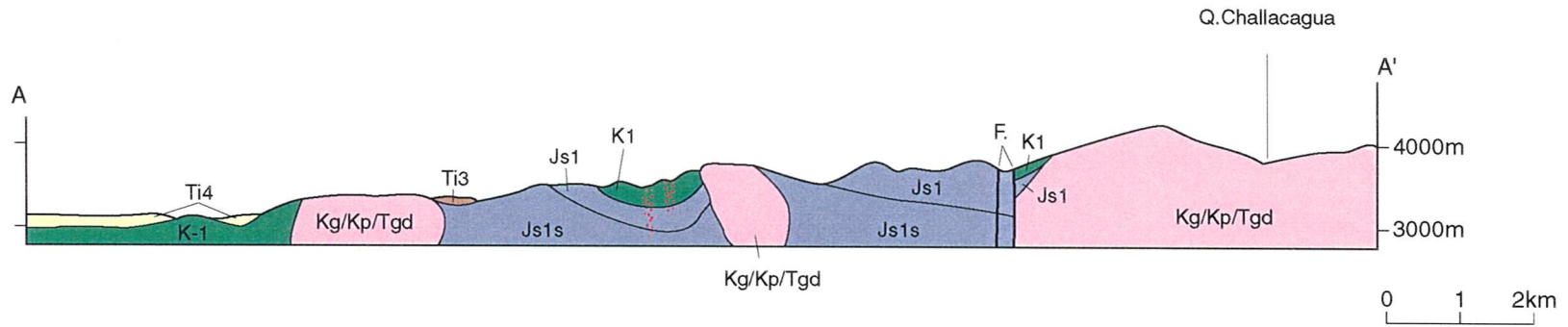


### West Queen Elizabeth



Geologic Time		Columnar Section	Lithology	Intrusives	Mineralization
CENOZOIC	QUATERNARY	Qal, Qcl	Alluvial, Talus	Diorite, Granodiorite porphyry, Granite porphyry (Kg/Kp/Tgd) ↑	Hypo-Mesothermal type ↑ Epithermal type
	LATE TERTIARY	Ti4	Dacitic Ignimbrite, Tuff, Intercalation of continental sediments		
	EARLY TERTIARY	Ti3	Rhyolitic-basaltic flow, Pyroclastic rock, Ignimbrite, Intercalation of continental sediments		
MESOZOIC	LATE CRETACEOUS				
	EARLY CRETACEOUS	K1	Andesitic ~ rhyolitic flow, Pyroclastic rock, Ignimbrite, Intercalated with sediments		
	LATE-MIDDLE JURASSIC	Kg/Kp/Tgd	Sandstone, Limestone, Marl, Shale		
Js1		Conglomerate, Chert			

Fig. 2-2-27 Schematic Stratigraphic Columns and Profiles of the West Queen Elizabeth Area

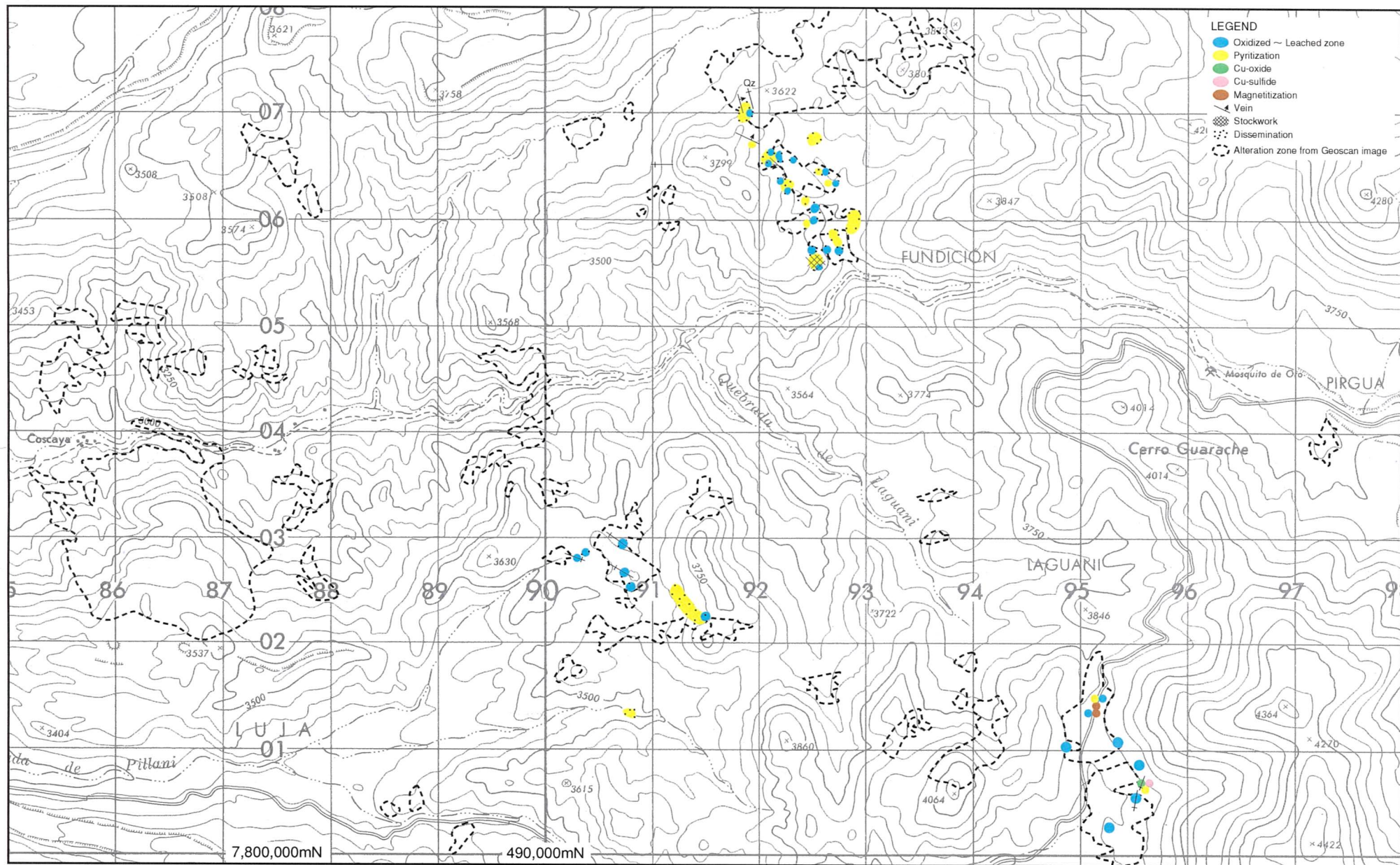


Fig. 2-2-28 Mineralization Map of the West Queen Elizabeth Area