

Geologic Time		Columnar Section	Lithology	Intrusives	Mineralization
CENOZOIC	QUATERNARY	Qa, Qa1, Qa2, Qd1, Qd2	Fluvial, Lacustrine, Glacial Acolian Alluvial, Colluvial Mud flow, talus	Diorite, Granodiorite porphyry (Kg/Ti)	Epithermal type?
	LATE TERTIARY	Ts3, Ts2, Ts1, Tvs	Rhyolitic ~ basaltic flow pyroclastic rock, Ignimbrite intercalation of continental sediments		
	EARLY TERTIARY				
MESOZOIC	LATE CRETACEOUS			Diorite, Granodiorite porphyry (Kg/Ti)	Epithermal type?
	EARLY CRETACEOUS	Kv, Kg/Ti	Andesitic ~ rhyolitic lava/ volcaniclastics with sediments		
	LATE JURASSIC	Js2	Conglomerate, Sandstone, Shale, Limestone, Andesitic lava/breccia		
	LATE-MIDDLE JURASSIC	Js1	Shale, Sandstone		

Fig. 2-2-22 Schematic Stratigraphic Columns and Profiles of the Chacarilla Area

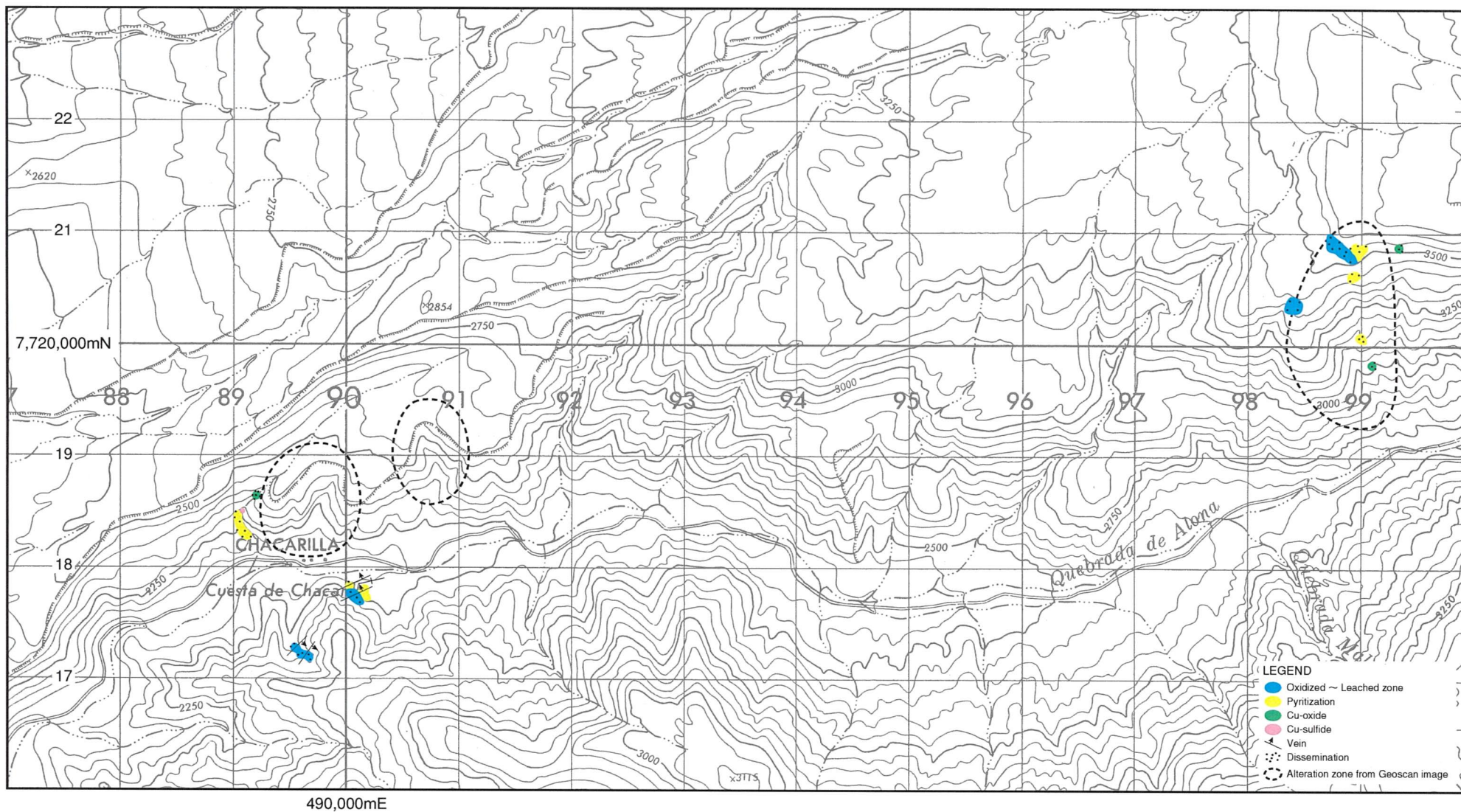


Fig. 2-2-23 Mineralization Map of the Chacarilla Area