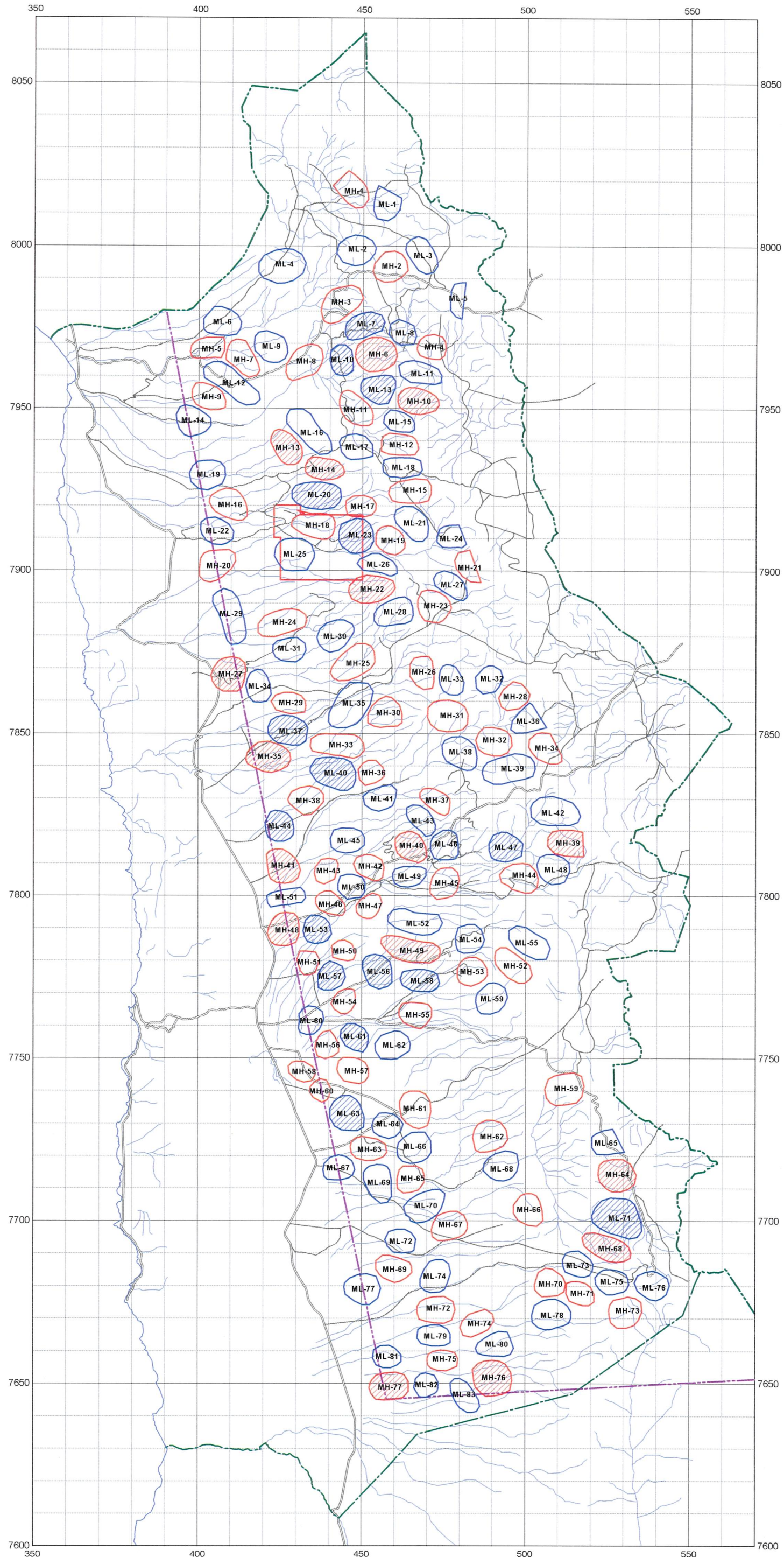


**LEGEND**

- Short wavelength High
- Short wavelength Low
- ⊞ Large amplitude SW High
- ⊞ Large amplitude SW Low

Fig.2-3-9  
Distribution of SW  
Magnetic Anomaly



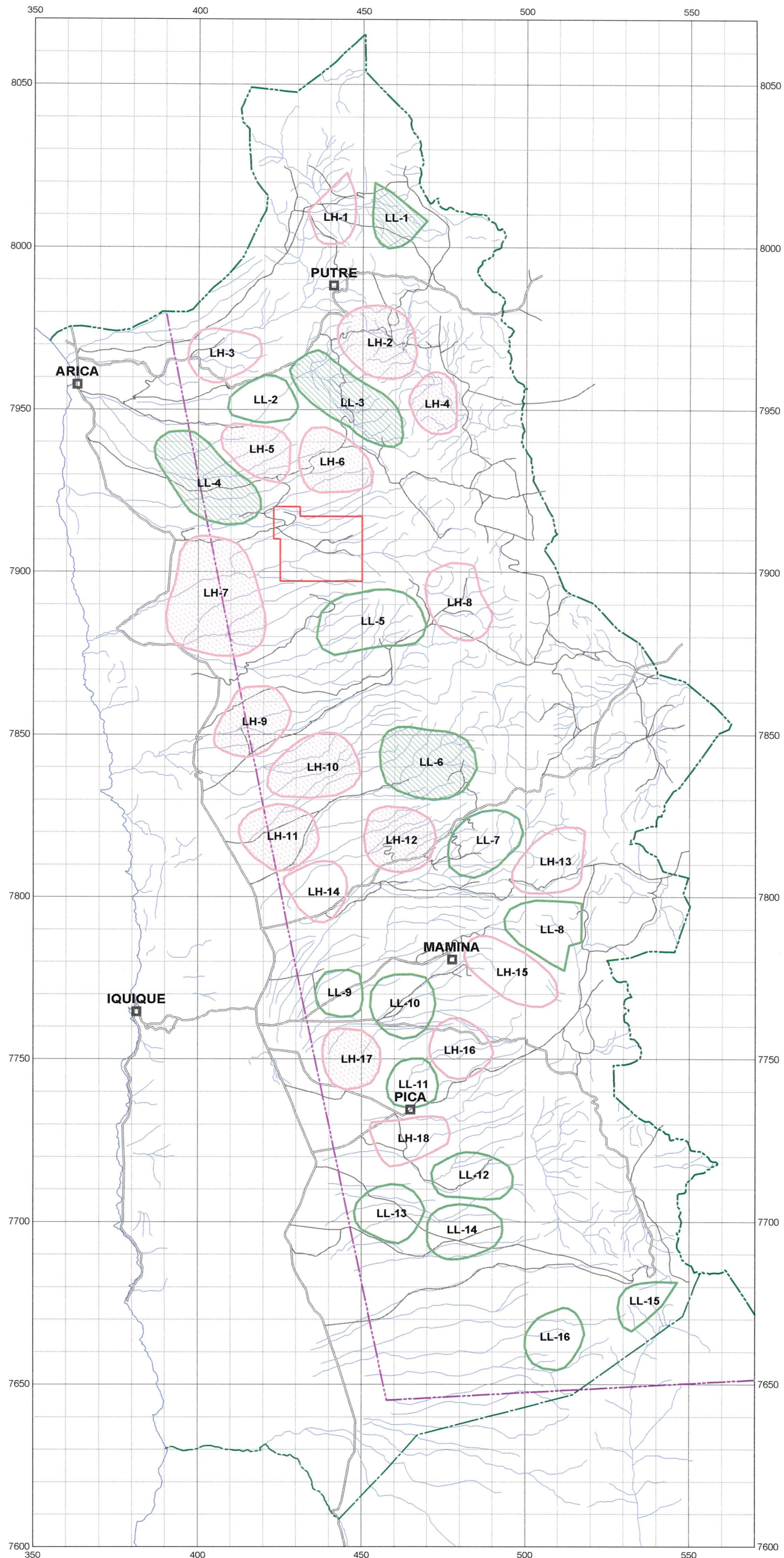


**LEGEND**

- Medium wavelength High
- Medium wavelength Low
- ▨ Large amplitude MW High
- ▨ Large amplitude MW Low

Fig.2-3-10  
Distribution of MW  
Magnetic Anomaly

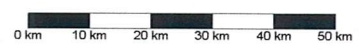




**LEGEND**

- Long wavelength High
- Long wavelength Low
- Large amplitude LW High
- Large amplitude LW Low

Fig.2-3-11  
Distribution of LW  
Magnetic Anomaly



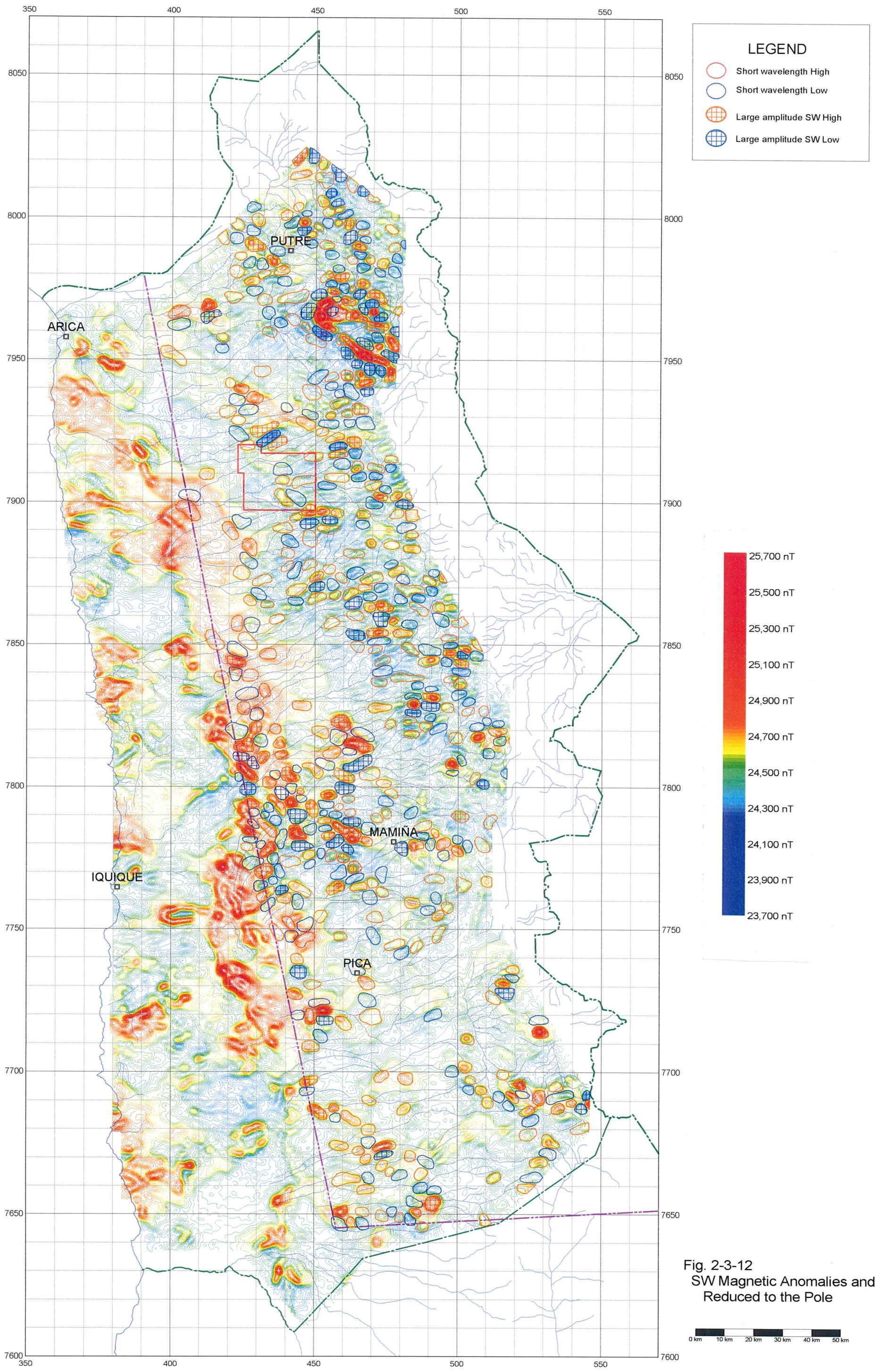
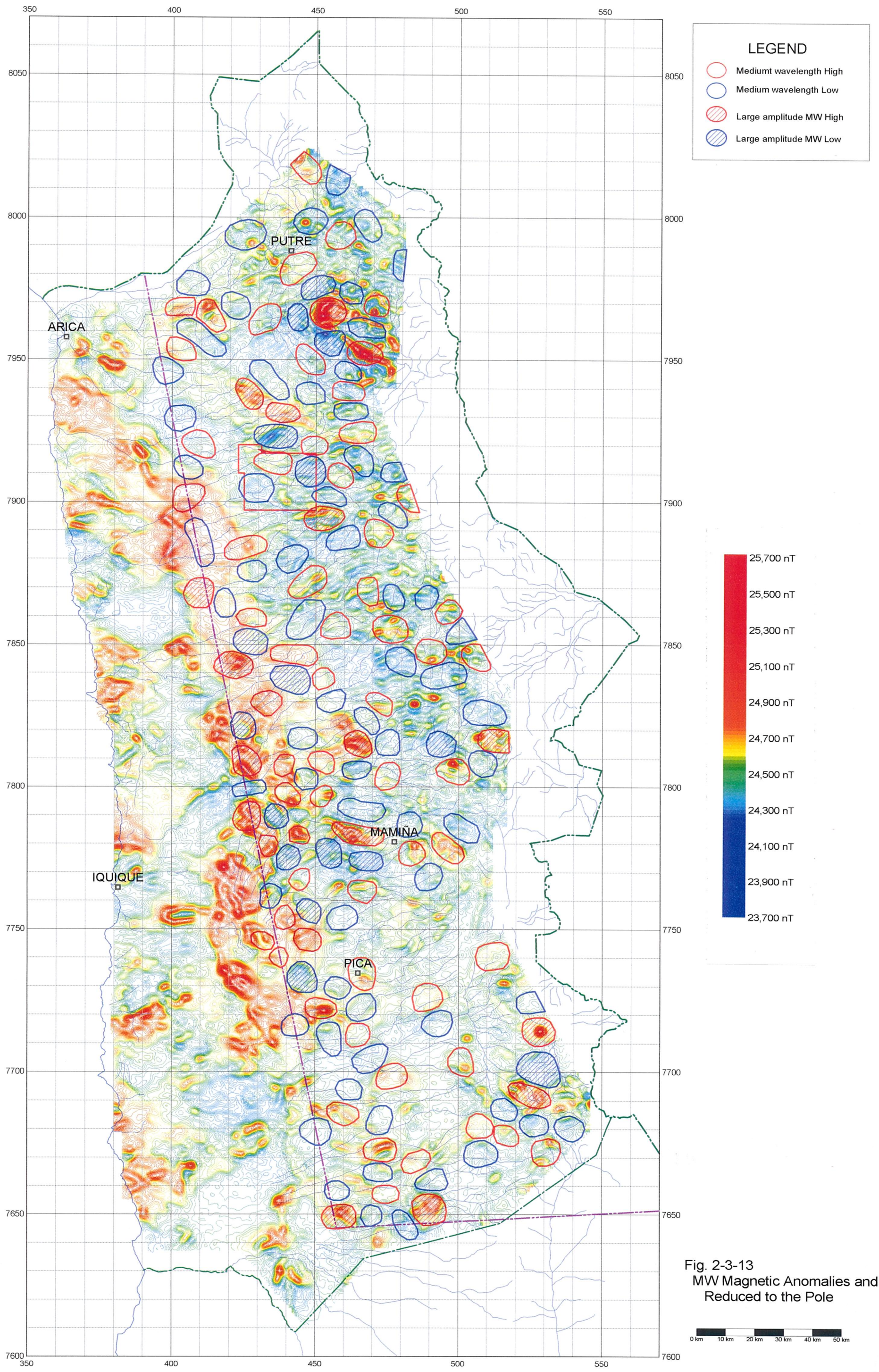
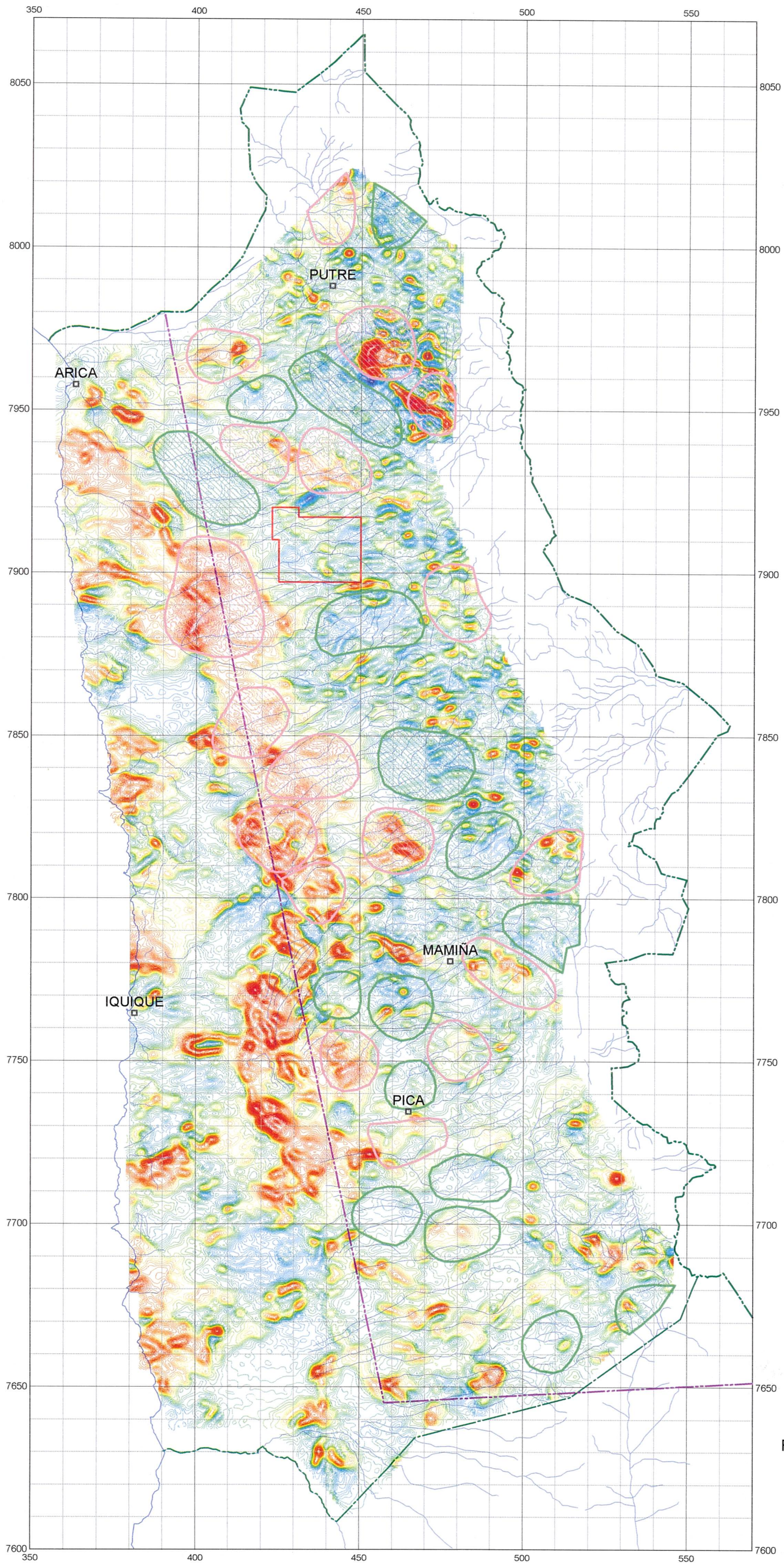


Fig. 2-3-12  
SW Magnetic Anomalies and  
Reduced to the Pole





**LEGEND**

- Long wavelength High
- Long wavelength Low
- Large amplitude LW High
- Large amplitude LW Low

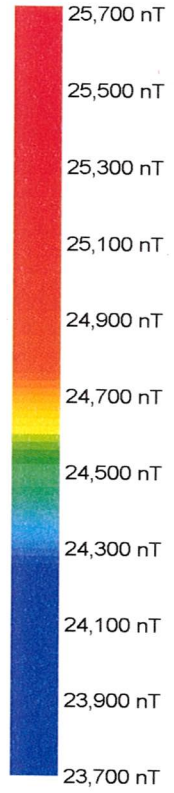
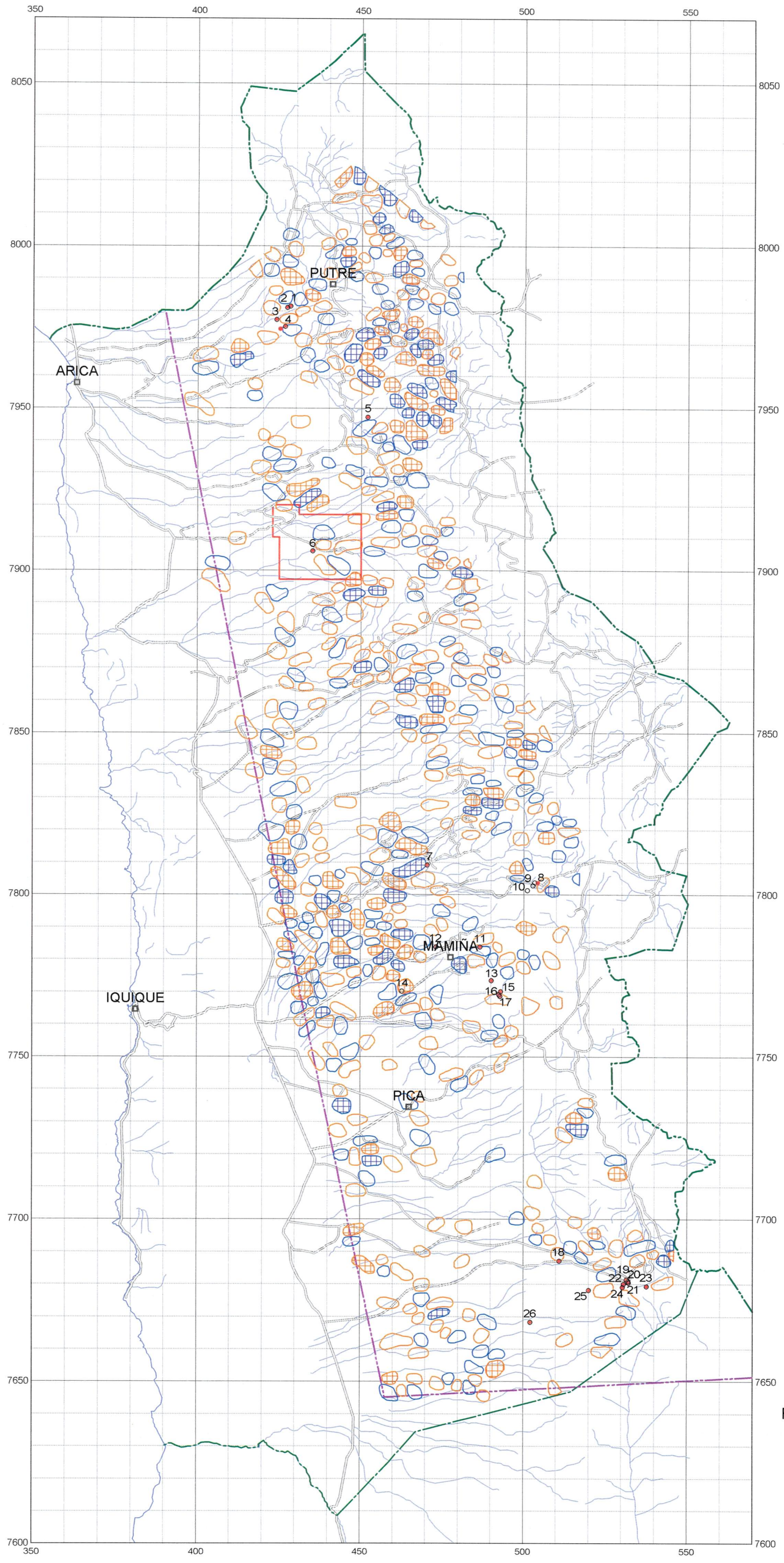


Fig. 2-3-14  
LW Magnetic Anomalies and  
Reduced to the Pole



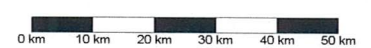


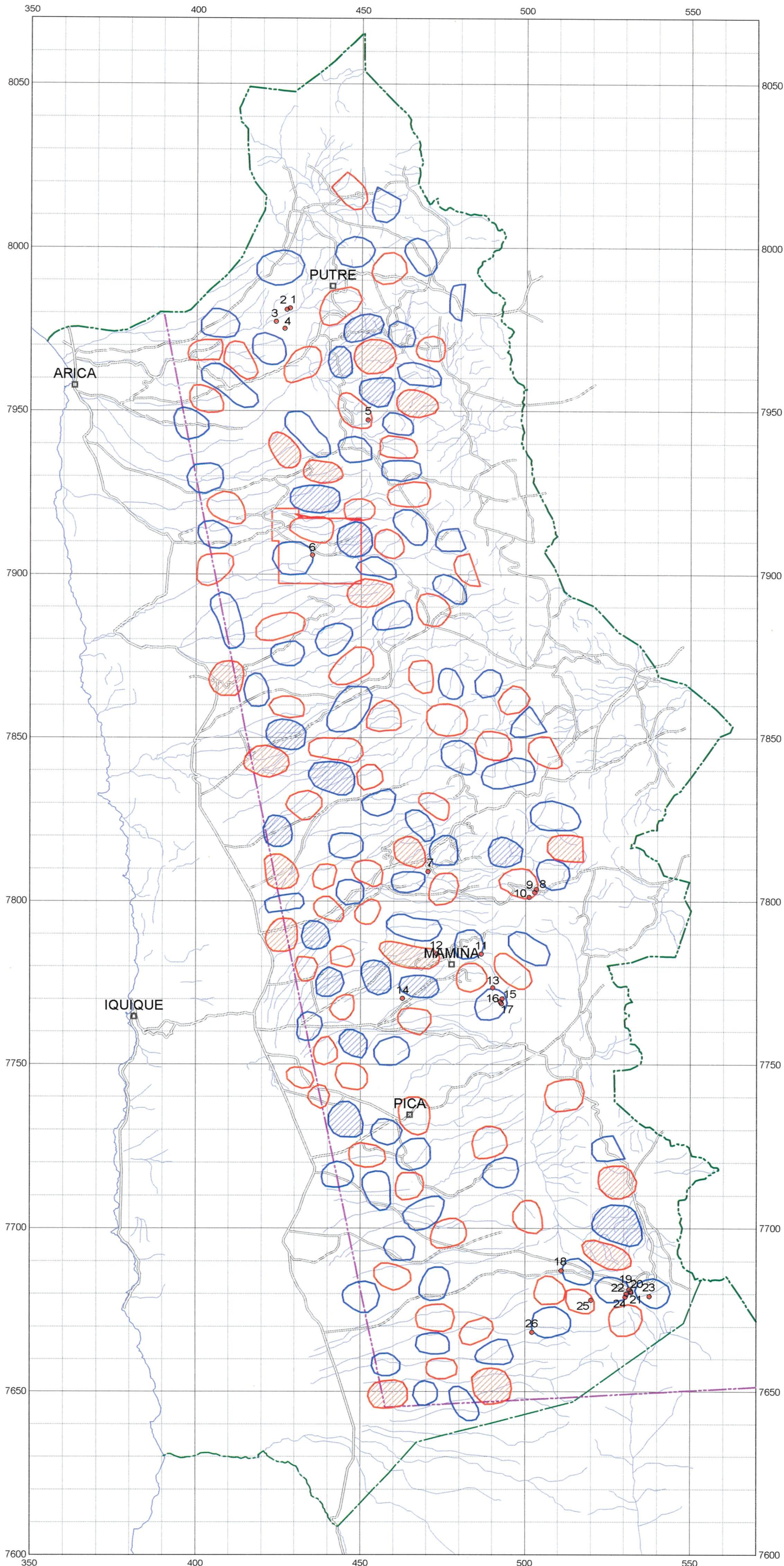
**LEGEND**

- Short wavelength High
- Short wavelength Low
- ⊞ Large amplitude SW High
- ⊞ Large amplitude SW Low

- Existing Porphyry-Cu Deposits & Prospects
- 1: Rasario
- 2: Jamiralla
- 3: Dos Hermanas
- 4: Campanane
- 5: Tignamar
- 6: Camarones
- 7: Mocha
- 8: Cucho
- 9: Queen Elizabeth
- 10: Santa Rosa
- 11: Flor del Desierto
- 12: Cerro Colorado
- 13: Tigre-San Carlos
- 14: Sagasca
- 15: La Planada
- 16: Hundida
- 17: Arauco
- 18: Copaquire
- 19: Rasario(Collahuasi)
- 20: Venus
- 21: Ponderosa
- 22: Tarapaca
- 23: Ujina(Collahuasi)
- 24: Esperanza
- 25: Quebrada Blanca
- 26: Olga,Lorena,Caniqueta

Fig. 2-3-15  
SW Magnetic Anomalies and Existing Porphyry-Cu Deposits & Prospects





**LEGEND**

- Medium wavelength High
- Medium wavelength Low
- ▨ Large amplitude MW High
- ▨ Large amplitude MW Low

- Existing Porphyry-Cu Deposits & Prospects**
- 1: Rasario
  - 2: Jamiralla
  - 3: Dos Hermanas
  - 4: Campanane
  - 5: Tignamar
  - 6: Camarones
  - 7: Mocha
  - 8: Cucho
  - 9: Queen Elizabeth
  - 10: Santa Rosa
  - 11: Flor del Desierto
  - 12: Cerro Colorado
  - 13: Tigre-San Carlos
  - 14: Sagasca
  - 15: La Planada
  - 16: Hundida
  - 17: Arauco
  - 18: Copaquire
  - 19: Rasario(Collahuasi)
  - 20: Venus
  - 21: Ponderosa
  - 22: Tarapaca
  - 23: Ujina(Collahuasi)
  - 24: Esperanza
  - 25: Quebrada Blanca
  - 26: Olga, Lorena, Caniqueta

**Fig. 2-3-16**  
**MW Magnetic Anomalies and Existing Porphyry-Cu Deposits & Prospects**

