

Fig. 2-1-60 Sample Location Map of the Area to the West of Putre

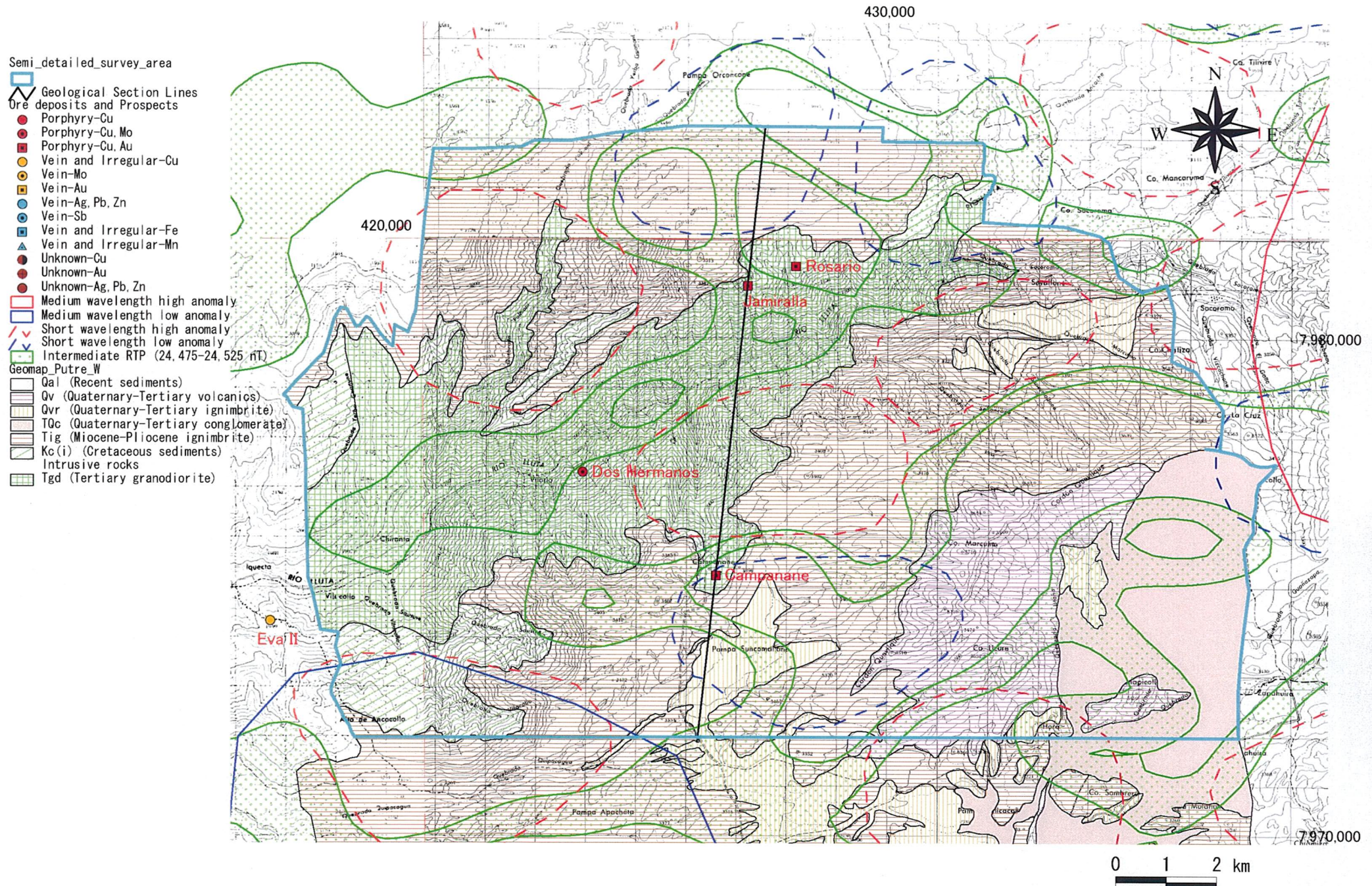
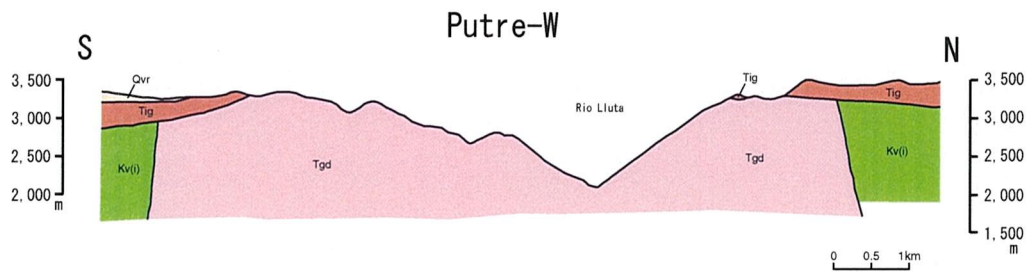


Fig. 2-1-61 Geological Map of the Area to the West of Putre



Geologic Time		Columnar Section	Lithology	Intrusives	Mineralization
CENOZOIC	QUATERNARY HOLOCENE	Gal	Alluvium	Granodiorite (Tgd) ↑	Porphyry copper type (py, sericite, tourmaline) ↑
	QUATERNARY ~ TERTIARY	Qv	Basalt lava		
		Qvr	Pumice tuff		
		Tce	Conglomerate		
	TERTIARY	PLIOCENE ~ MIOCENE	Tig		
PALEOGENE					
MESOZOIC	CRETACEOUS LATE				
	EARLY	Ke(i) Tgd	Sandstone		

Fig. 2-1-62 Schematic Stratigraphic Columns and Profiles of the Area to the West of Putre

- Mineralization
- Pyritization
 - Cu-oxide
 - Cu-sulfide
 - Molybdenite
 - Oxidation
 - Native sulfur
 - Barite-limonite vein
 - none
- Semi_detailed_survey_area

- Geomap_Putre_W
- Qal (Recent sediments)
 - Qv (Quaternary-Tertiary volcanics)
 - Qvr (Quaternary-Tertiary ignimbrite)
 - TQc (Quaternary-Tertiary conglomerate)
 - Tig (Miocene-Pliocene ignimbrite)
 - Kc(i) (Cretaceous sediments)
 - Intrusive rocks
 - Tgd (Tertiary granodiorite)

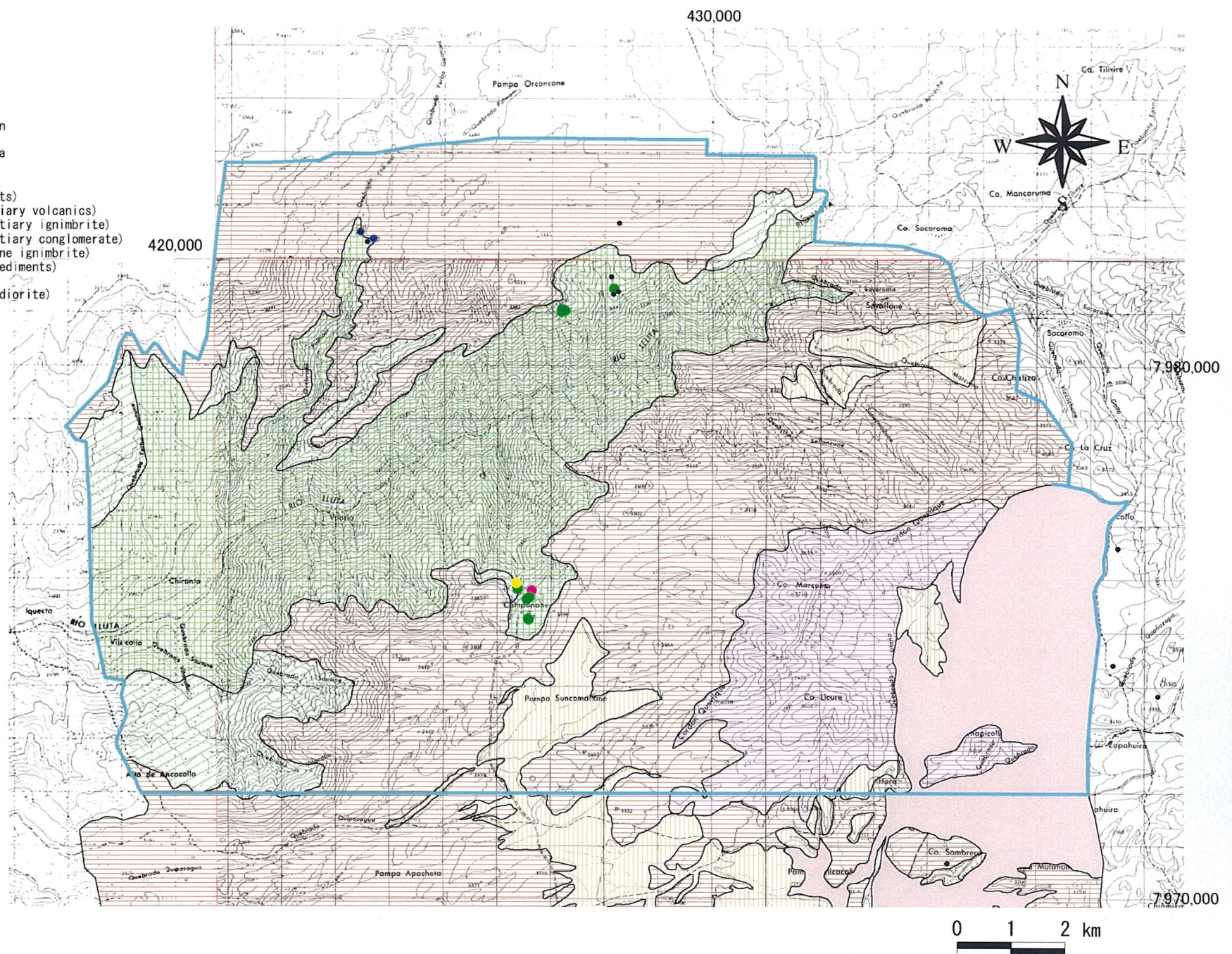


Fig. 2-1-63 Mineralization Map of the Area to the West of Putre

- Alteration
 - Silicification
 - Acid alteration
 - Sericitization
 - Propylitization
 - Potassic alteration
 - Tourmalinization
 - none
- Alteration zone (from TM images)
- Semi_detailed_survey_area
- Geomap_Putre_W
 - Qal (Recent sediments)
 - Qv (Quaternary-Tertiary volcanics)
 - Qvr (Quaternary-Tertiary ignimbrite)
 - TQc (Quaternary-Tertiary conglomerate)
 - Tig (Miocene-Pliocene ignimbrite)
 - Kc(i) (Cretaceous sediments)
 - Intrusive rocks
 - Tgd (Tertiary granodiorite)

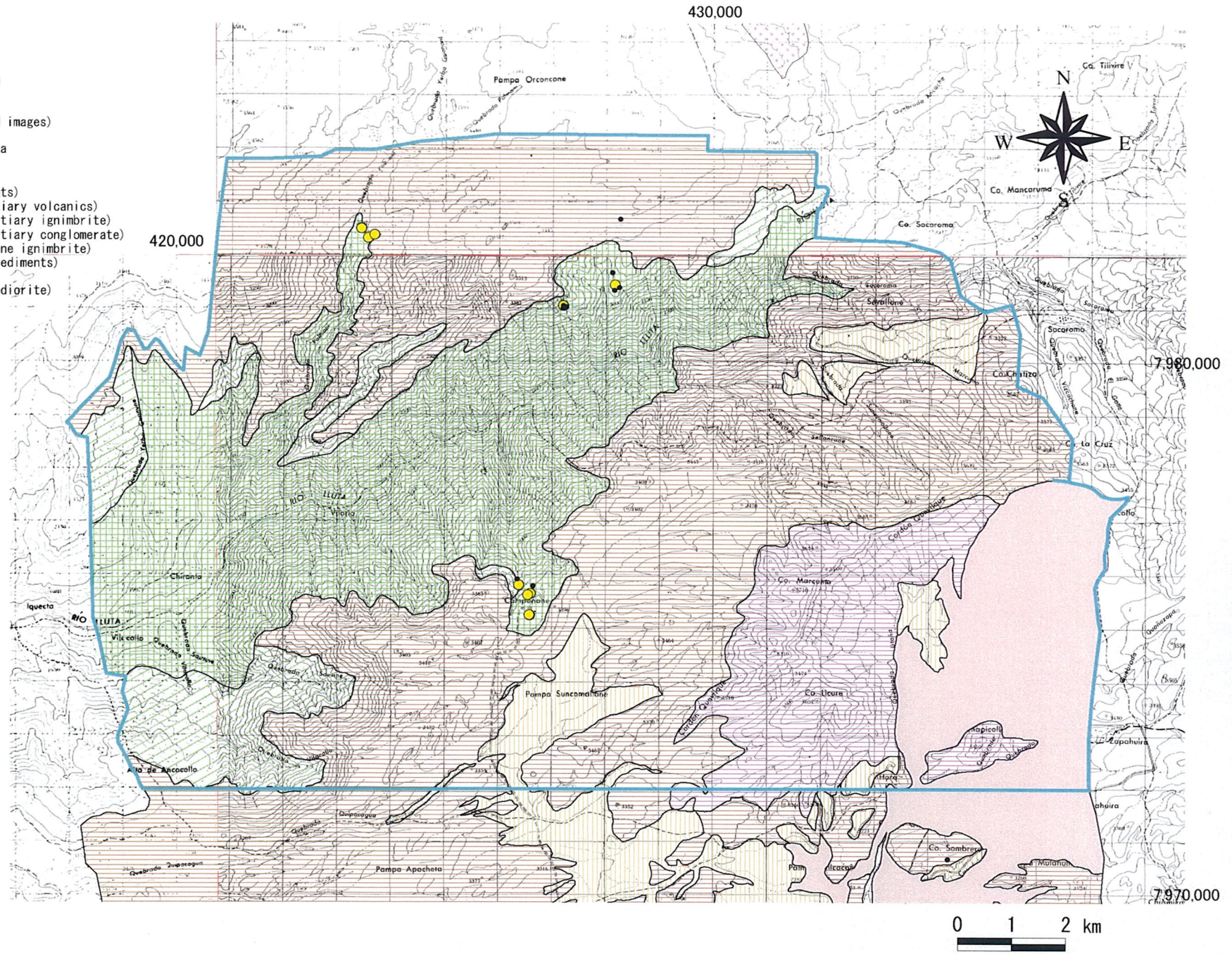


Fig. 2-1-64 Distribution Map of Alteration Minerals at the Area to the West of Putre

Semi_detailed_survey_area

Geological Section Lines

Ore deposits and Prospects

● Porphyry-Cu

● Porphyry-Cu, Mo

■ Porphyry-Cu, Au

● Vein and Irregular-Cu

● Vein-Mo

■ Vein-Au

● Vein-Ag, Pb, Zn

● Vein-Sb

■ Vein and Irregular-Fe

▲ Vein and Irregular-Mn

● Unknown-Cu

● Unknown-Au

● Unknown-Ag, Pb, Zn

Au (geochem. + ore assay)

● 235.1 - 1140.0 (ppb)

● 102.1 - 235.0

● 42.1 - 102.0

● 13.1 - 42.0

● 2.5 - 13.0

Geomap Putre W

Qal (Recent sediments)

Qv (Quaternary-Tertiary volcanics)

Qvr (Quaternary-Tertiary ignimbrite)

TQc (Quaternary-Tertiary conglomerate)

Tig (Miocene-Pliocene ignimbrite)

Kc(i) (Cretaceous sediments)

Intrusive rocks

Tgd (Tertiary granodiorite)

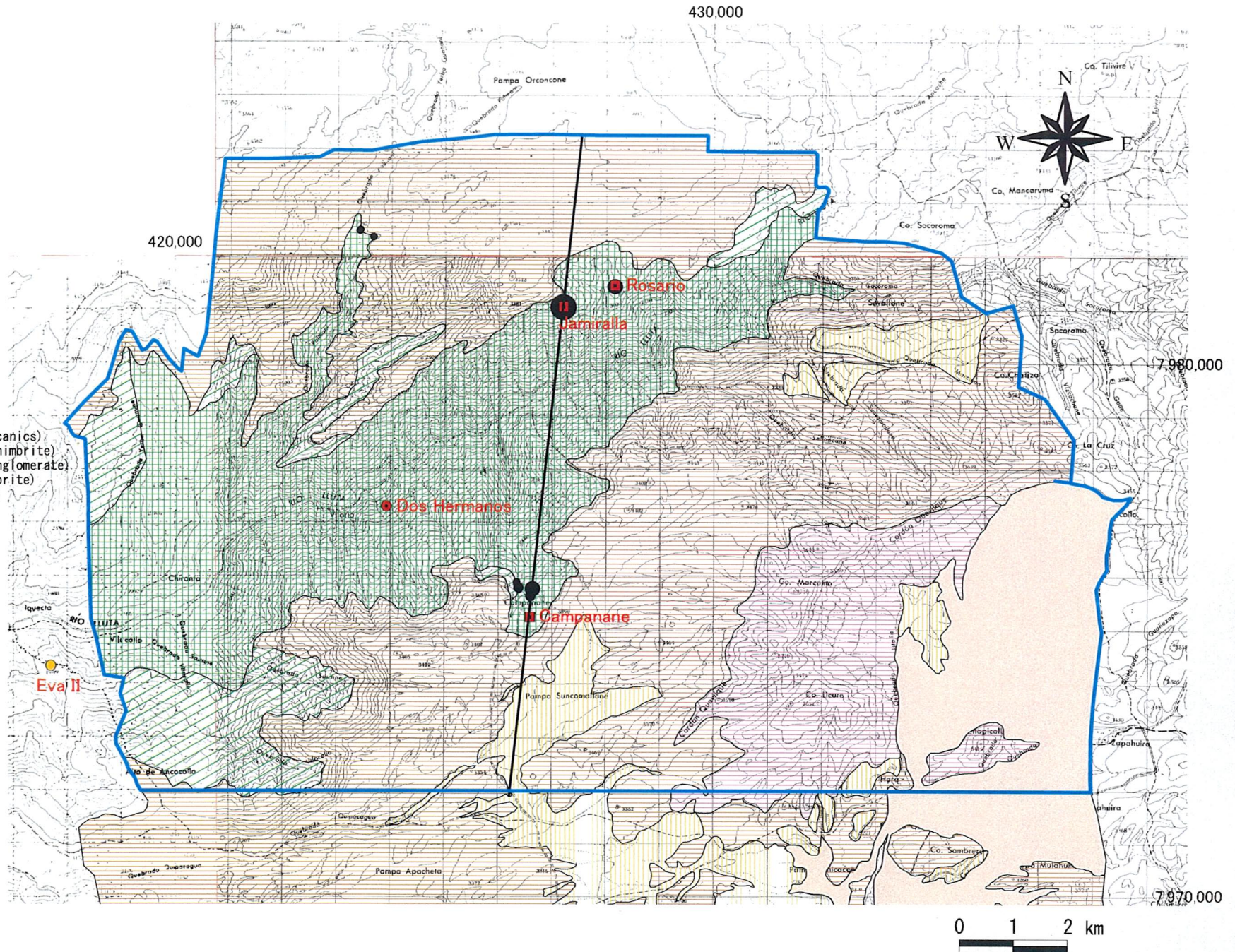


Fig. 2-1-65 (1) Geochemical Anomaly Map in the Area to the West of Putre (Au)

Semi_detailed_survey_area

Geological Section Lines

Ore deposits and Prospects

- Porphyry-Cu
- Porphyry-Cu, Mo
- Porphyry-Cu, Au
- Vein and Irregular-Cu
- Vein-Mo
- Vein-Au
- Vein-Ag, Pb, Zn
- Vein-Sb
- Vein and Irregular-Fe
- ▲ Vein and Irregular-Mn
- Unknown-Cu
- Unknown-Au
- Unknown-Ag, Pb, Zn

Ag (geochem. + ore assay)

- 79.10 - 314.00 (ppm)
- 14.10 - 79.00
- 7.10 - 14.00
- 1.10 - 7.00
- 0.05 - 1.00

Geomap Putre_W

- Qal (Recent sediments)
- Qv (Quaternary-Tertiary volcanics)
- Qvr (Quaternary-Tertiary ignimbrite)
- TQc (Quaternary-Tertiary conglomerate)
- Tig (Miocene-Pliocene ignimbrite)
- Kc(i) (Cretaceous sediments)
- Intrusive rocks
- Tgd (Tertiary granodiorite)

— 243 —

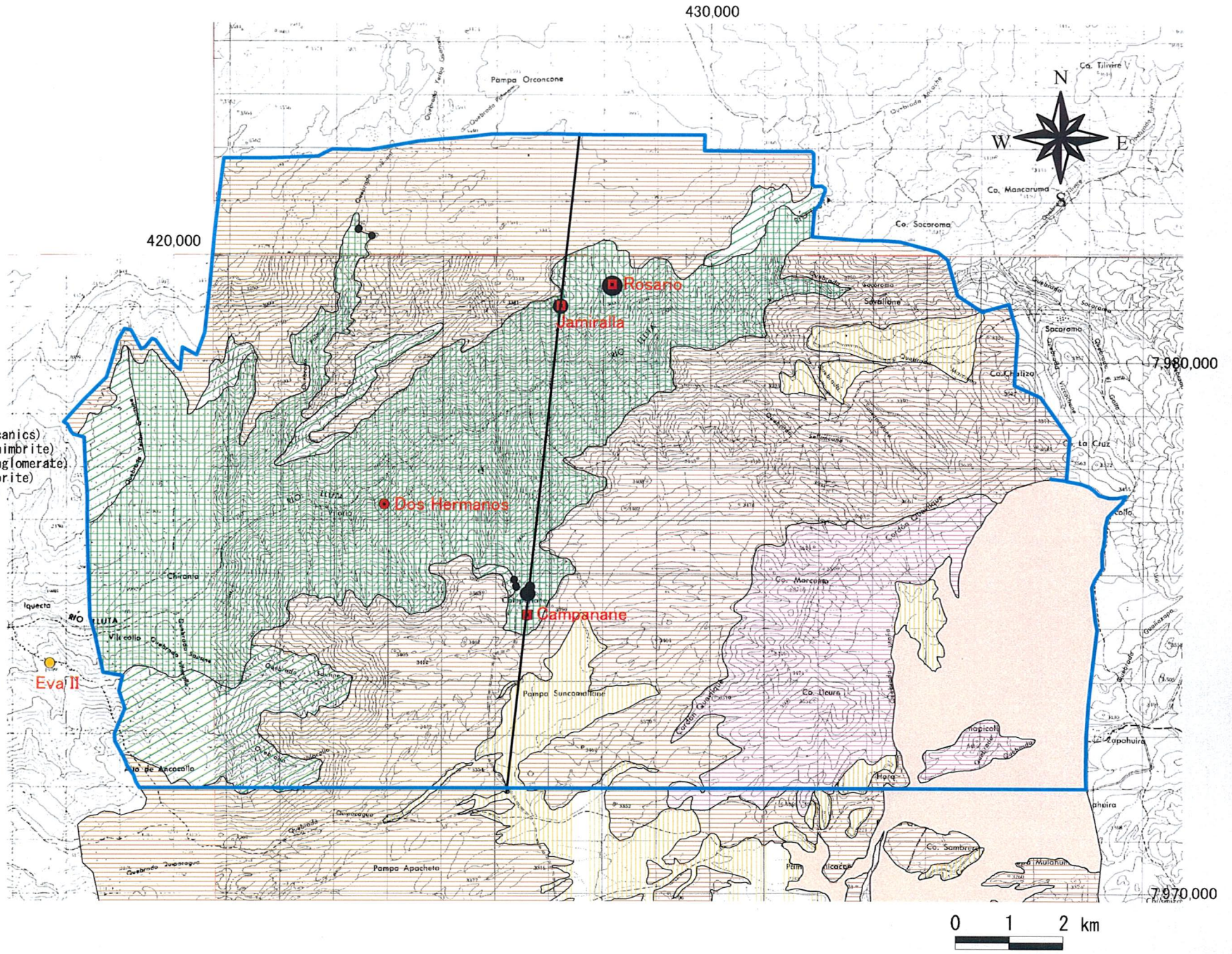


Fig. 2-1-65 (2) Geochemical Anomaly Map in the Area to the West of Putre (Ag)

Semi_detailed_survey_area

Geological Section Lines

Ore deposits and Prospects

● Porphyry-Cu

● Porphyry-Cu, Mo

● Porphyry-Cu, Au

● Vein and Irregular-Cu

● Vein-Mo

● Vein-Au

● Vein-Ag, Pb, Zn

● Vein-Sb

● Vein and Irregular-Fe

● Vein and Irregular-Mn

● Unknown-Cu

● Unknown-Au

● Unknown-Ag, Pb, Zn

Cu (geochem. + ore assay)

● 38681 - 62830 (ppm)

● 10597 - 38680

● 2021 - 10596

● 582 - 2020

● 261 - 581

● 85 - 260

● 1 - 84

Geomap_Putre_W

Qal (Recent sediments)

Qv (Quaternary-Tertiary volcanics)

Qvr (Quaternary-Tertiary ignimbrite)

TQc (Quaternary-Tertiary conglomerate)

Tig (Miocene-Pliocene ignimbrite)

Kc(i) (Cretaceous sediments)

Intrusive rocks

Tgd (Tertiary granodiorite)

— 245 —

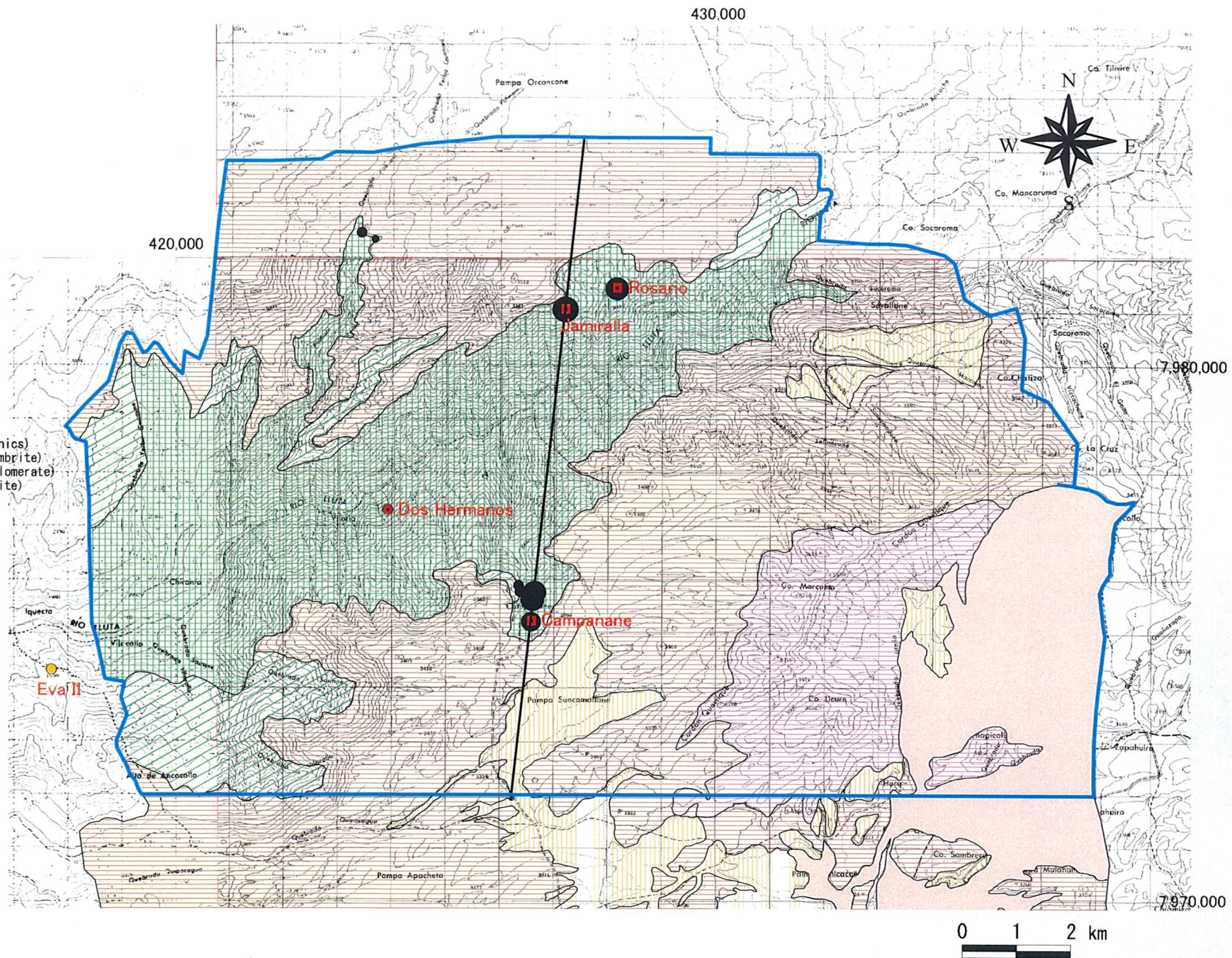


Fig. 2-1-65 (3) Geochemical Anomaly Map in the Area to the West of Putre (Cu)