



Geologic Time		Columnar Section	Lithology	Intrusives	Mineralization
CENOZOIC	QUATERNARY HOLOCENE	Qal	Colluvium Alluvium		Epithermal type (kaolin, silica, sericite) ↑
	QUATERNARY ~ TERTIARY	Qv	Basaltic, andesitic, dacitic lavas		
		Qvr	Pumice tuff		
	TERTIARY PLIOCENE ~ MIOCENE	Qvc	Sandstone		
		Tig	Welded tuff Pumice tuff		

Fig. 2-1-43 Schematic Stratigraphic Columns and Profiles of the Area to the Southeast of Tignamar

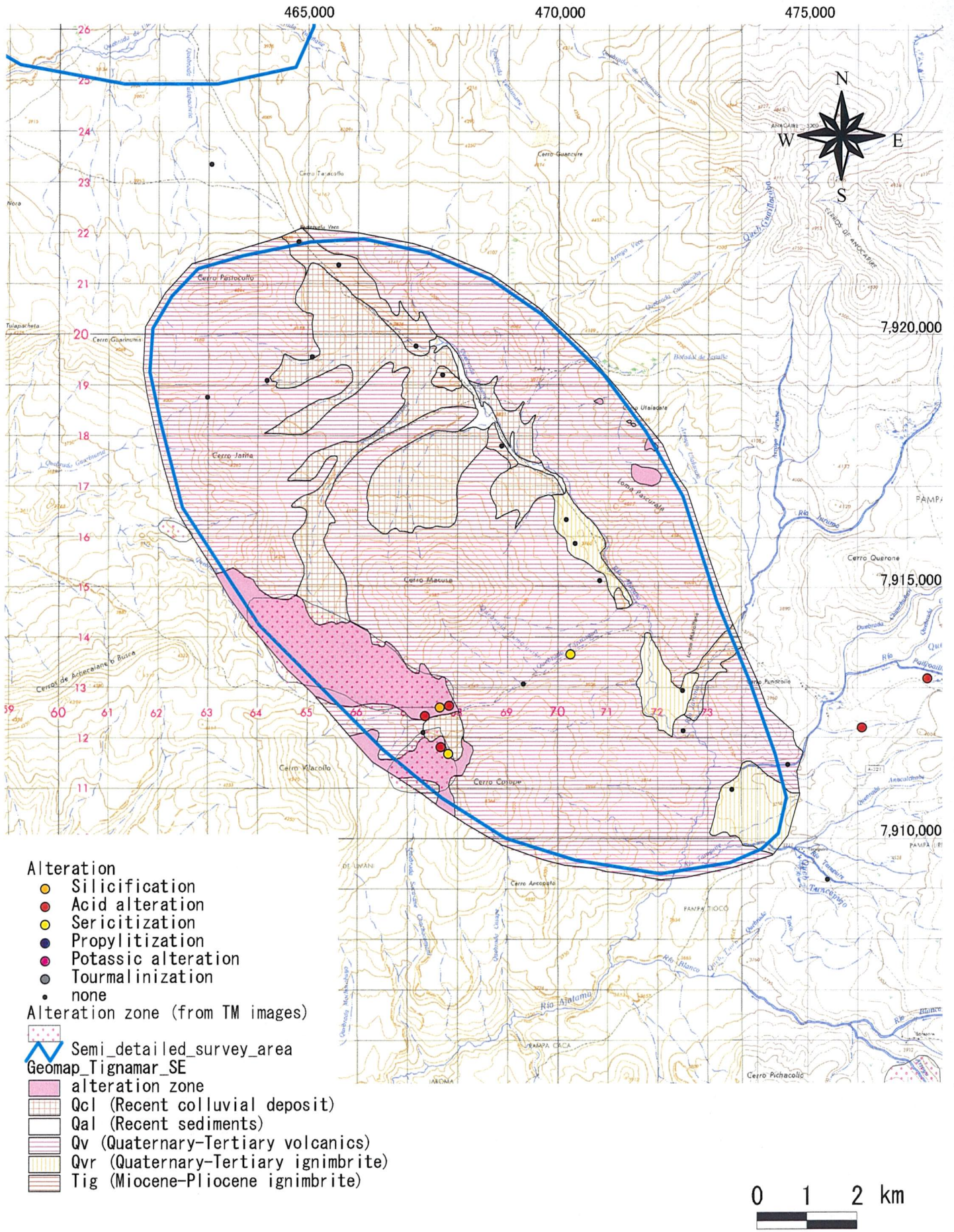


Fig. 2-1-44 Distribution Map of Alteration Minerals at the Area to the Southeast of Tignamar

181

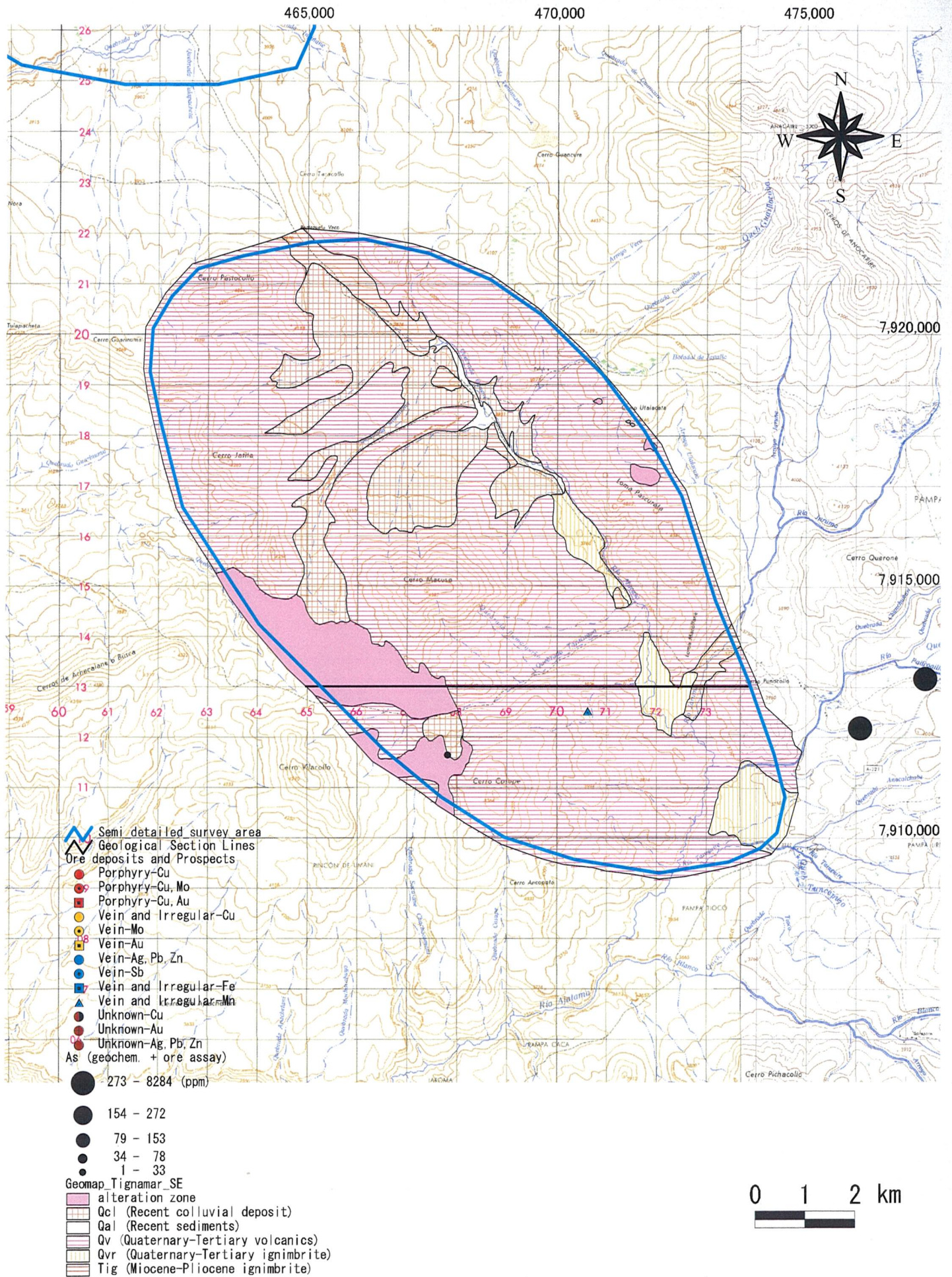
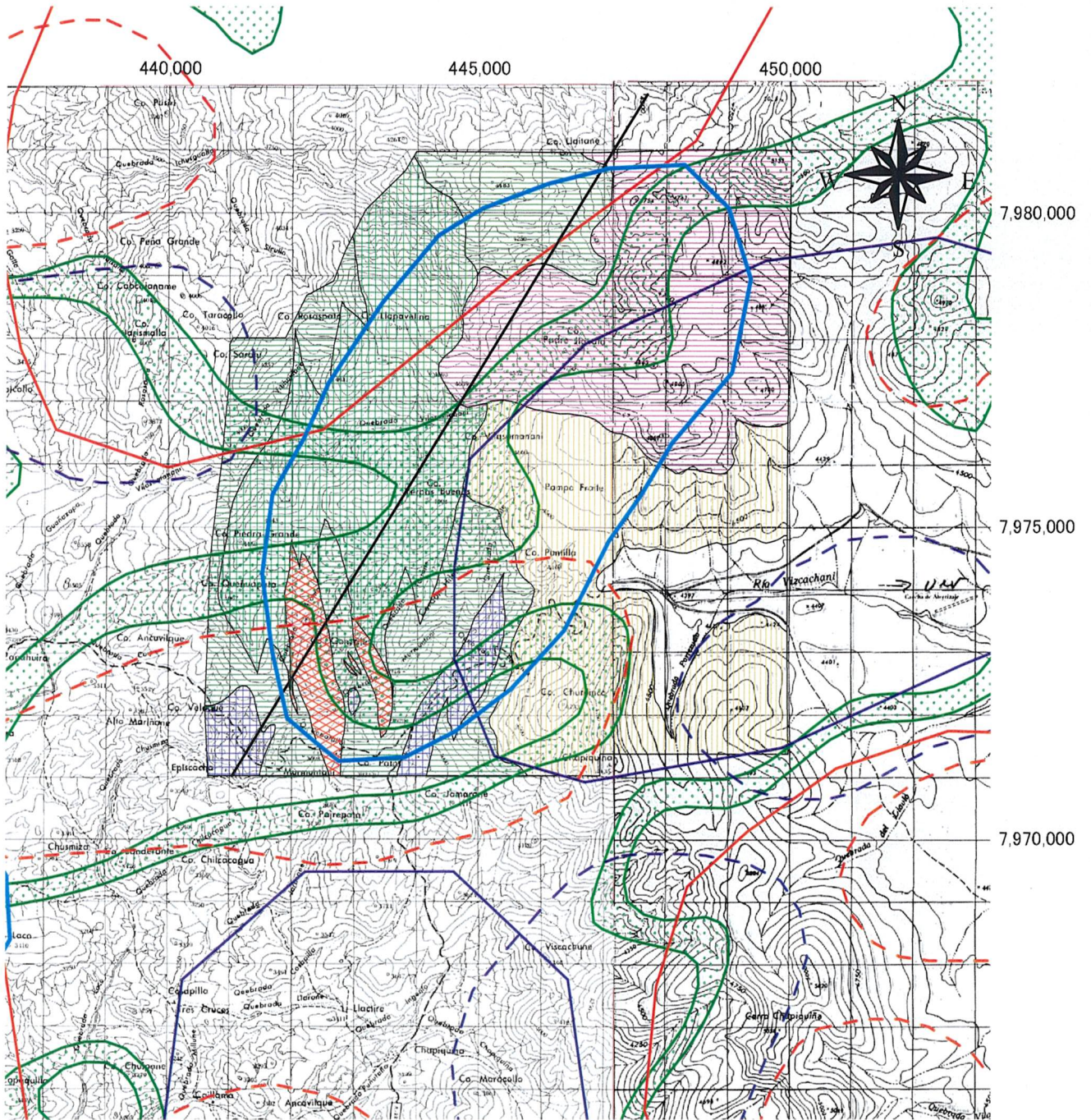


Fig. 2-1-45 (1) Geochemical Anomaly Map in the Area to the Southeast of Tignamar (As)



Fig. 2-1-46 Sample Location Map of the Area to the South of Putre

581

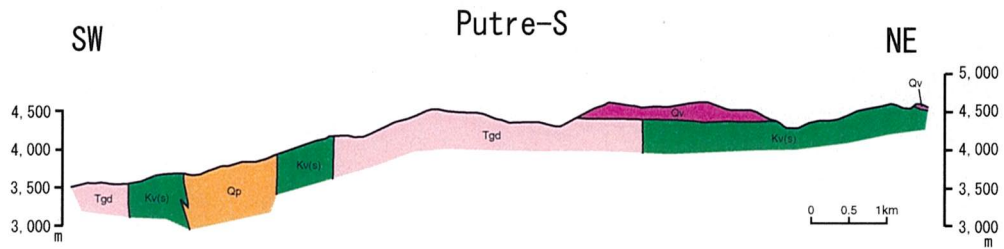


- Semi_detailed_survey_area
- Geological Section Lines
- Medium wavelength high anomaly
- Medium wavelength low anomaly
- Short wavelength high anomaly
- Short wavelength low anomaly
- Intermediate RTP (24, 475–24, 525 nT)
- Geomap_Putre_S
- Qal (Recent sediments)
- Qv (Quaternary-Tertiary volcanics)
- Qvr (Quaternary-Tertiary ignimbrite)
- Kv(s) (Cretaceous volcanics)
- Intrusive rocks
- Qp (Quartz porphyry)
- Di, Dip (Diorite, Diorite porphyry)
- Tgd (Tertiary granodiorite)

0 1 2 km

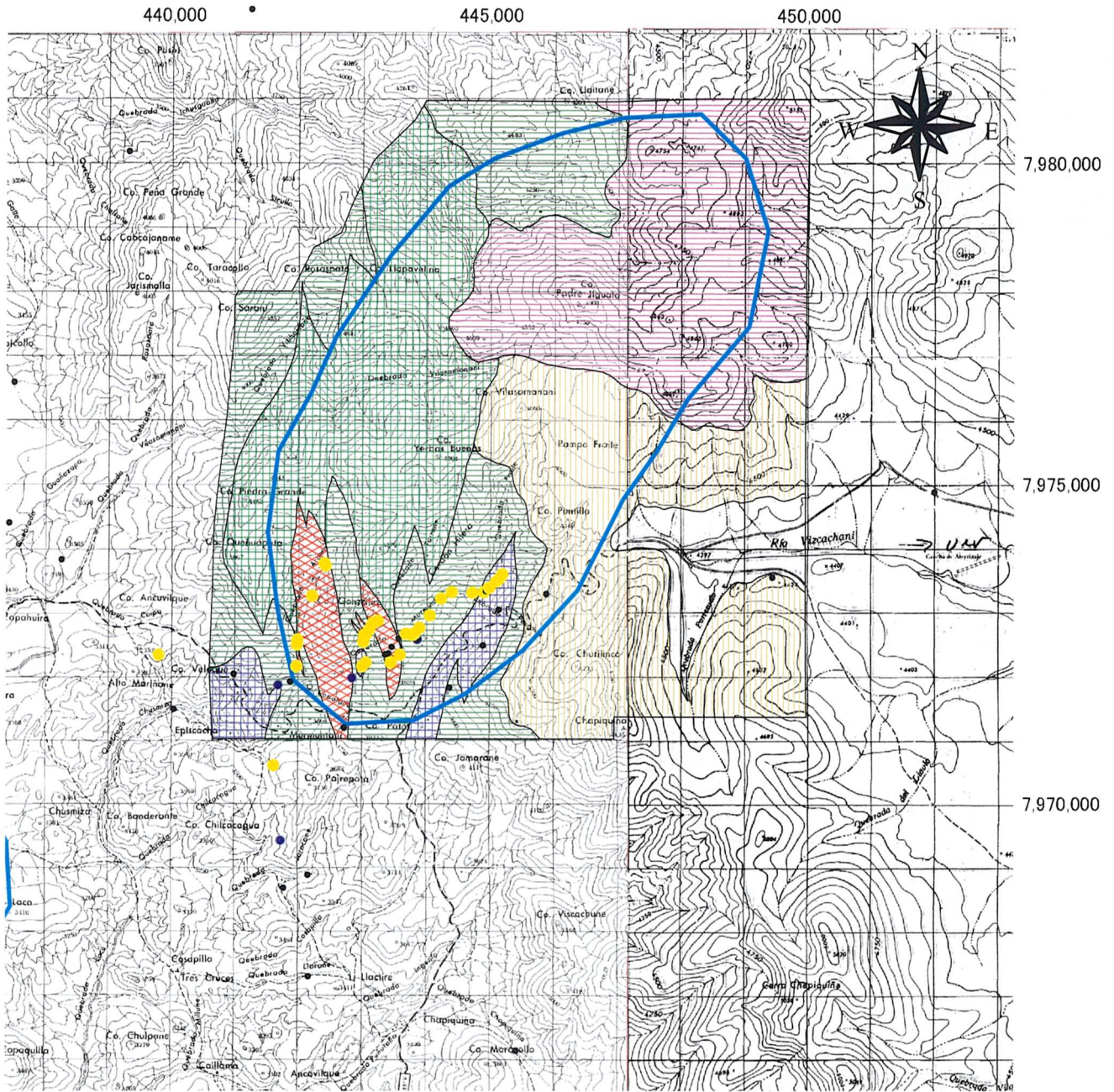
Fig. 2-1-47 Geological Map of the Area to the South of Putre

181



Geologic Time		Columnar Section	Lithology	Intrusives	Mineralization
CENOZOIC	QUATERNARY HOLOCENE	Qal	Alluvium		Porphyry copper type? (py, sericite, silica) ↑ Epithermal type (silica, kaolin) ↑
	QUATERNARY ~ LATE TERTIARY	Qv Qw	Basaltic ~ andesitic lava Welded tuff Tuff breccia		
	MIDDLE ~ EARLY TERTIARY				
MESOZOIC	LATE CRETACEOUS	Tgd, Qp, Kv(s), Dip, Kw(s)	Andesitic ~ basaltic lava	Grandiorite (Tgd) ↑ Quartz porphyry (Qp) ↑ Diorite (Di) ↑ Diorite porphyry (Dip) ↑	

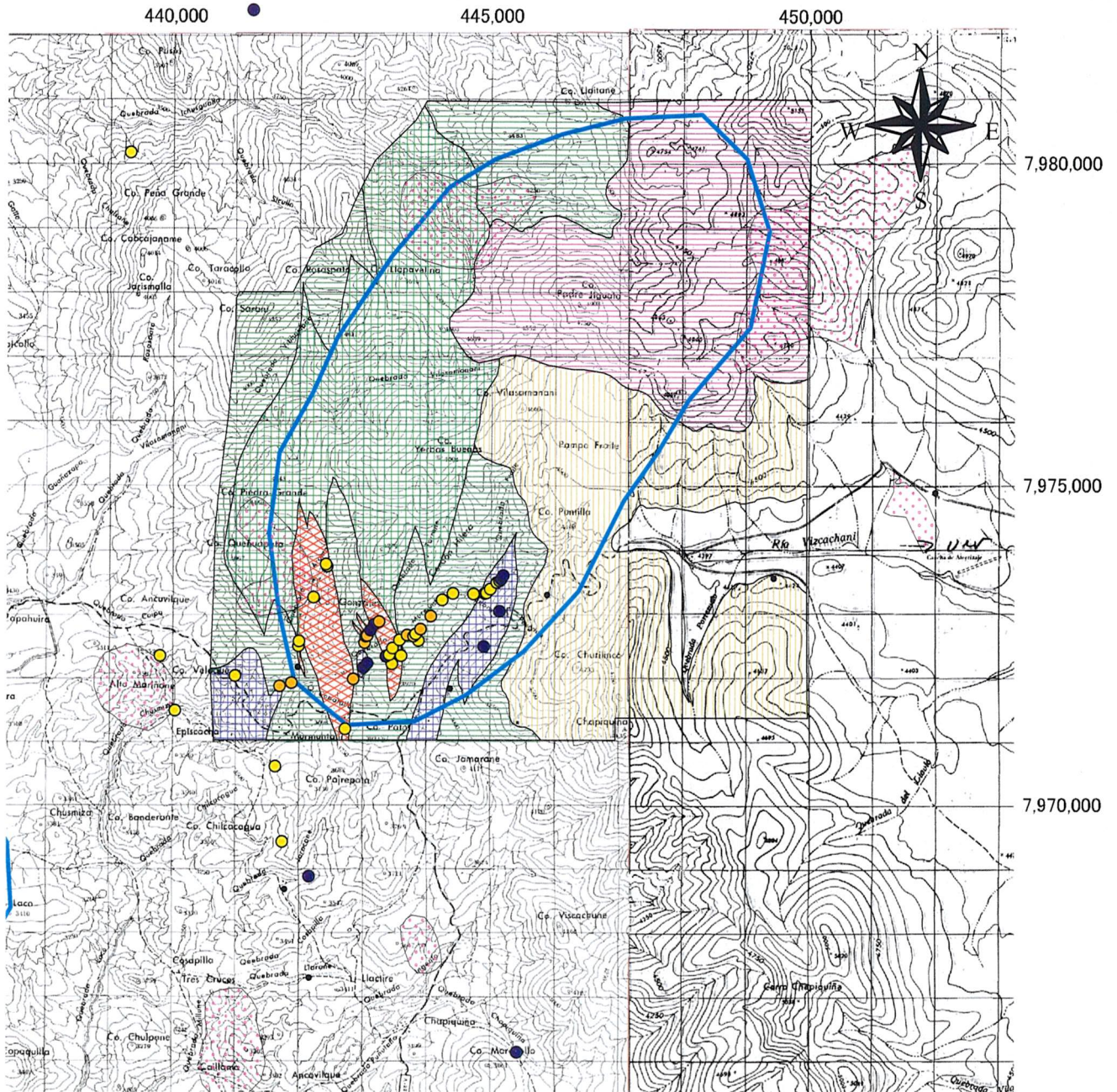
Fig. 2-1-48 Schematic Stratigraphic Columns and Profiles of the Area to the South of Putre



- Mineralization
- Pyritization
 - Cu-oxide
 - Cu-sulfide
 - Molybdenite
 - Oxidation
 - Native sulfur
 - Barite-limonite vein
 - none
- Semi_detailed_survey_area
 Geomap_Putre_S
- Qa1 (Recent sediments)
 - Qv (Quaternary-Tertiary volcanics)
 - Qvr (Quaternary-Tertiary ignimbrite)
 - Kv(s) (Cretaceous volcanics)
 - Intrusive rocks
 - Qp (Quartz porphyry)
 - Di, Dip (Diorite, Diorite porphyry)
 - Tgd (Tertiary granodiorite)

0 1 2 km

Fig. 2-1-49 Mineralization Map of the Area to the South of Putre



- Alteration
- Silicification
 - Acid alteration
 - Sericitization
 - Propylitization
 - Potassic alteration
 - Tourmalinization
 - none
- Alteration zone (from TM images)
- Semi_detailed_survey_area
 - Geomap_Putre_S
 - Qal (Recent sediments)
 - Qv (Quaternary-Tertiary volcanics)
 - Qvr (Quaternary-Tertiary ignimbrite)
 - Kv(s) (Cretaceous volcanics)
 - Intrusive rocks
 - Qp (Quartz porphyry)
 - Di, Dip (Diorite, Diorite porphyry)
 - Tgd (Tertiary granodiorite)

0 1 2 km

Fig. 2-1-50 Distribution Map of Alteration Minerals at the Area to the South of Putre

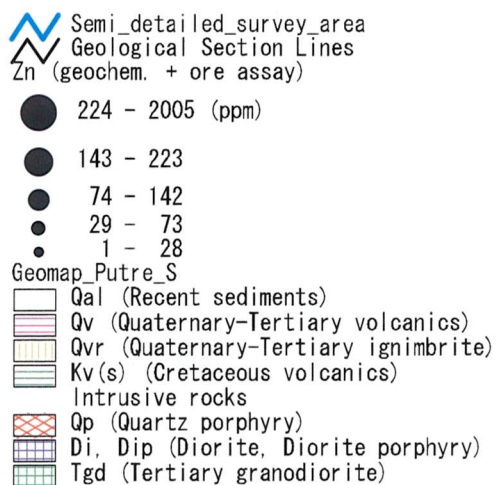
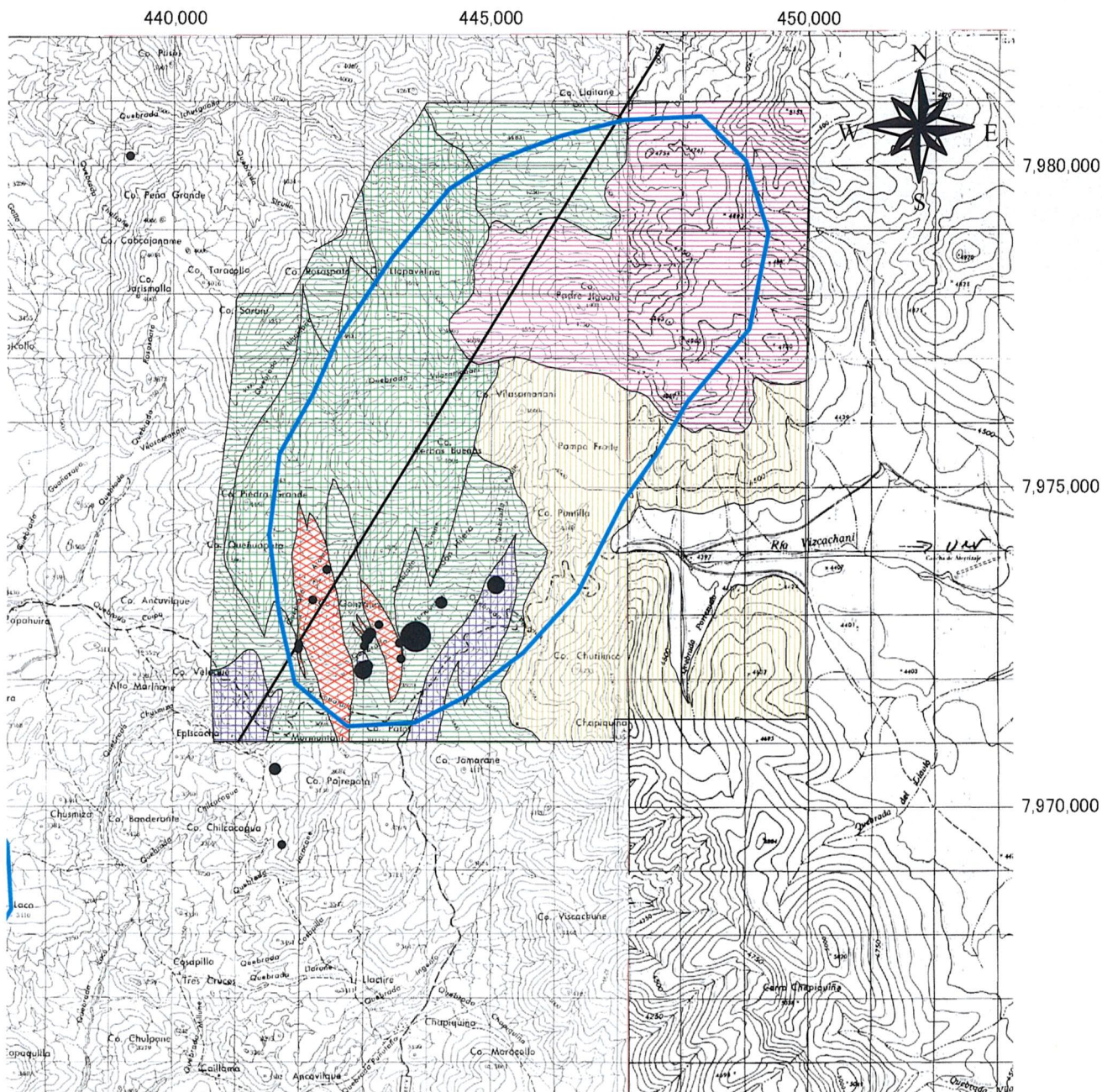


Fig. 2-1-51 (1) Geochemical Anomaly Map in the Area to the South of Putre (Zn)

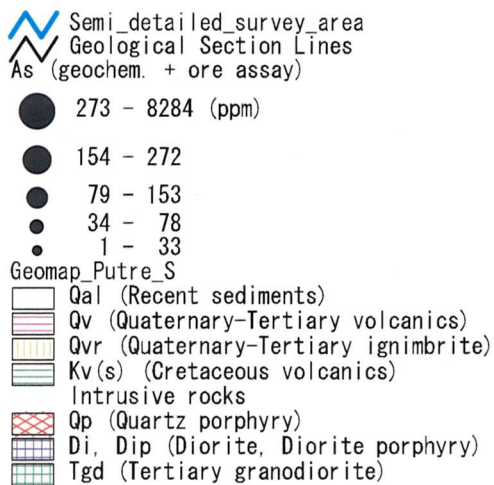
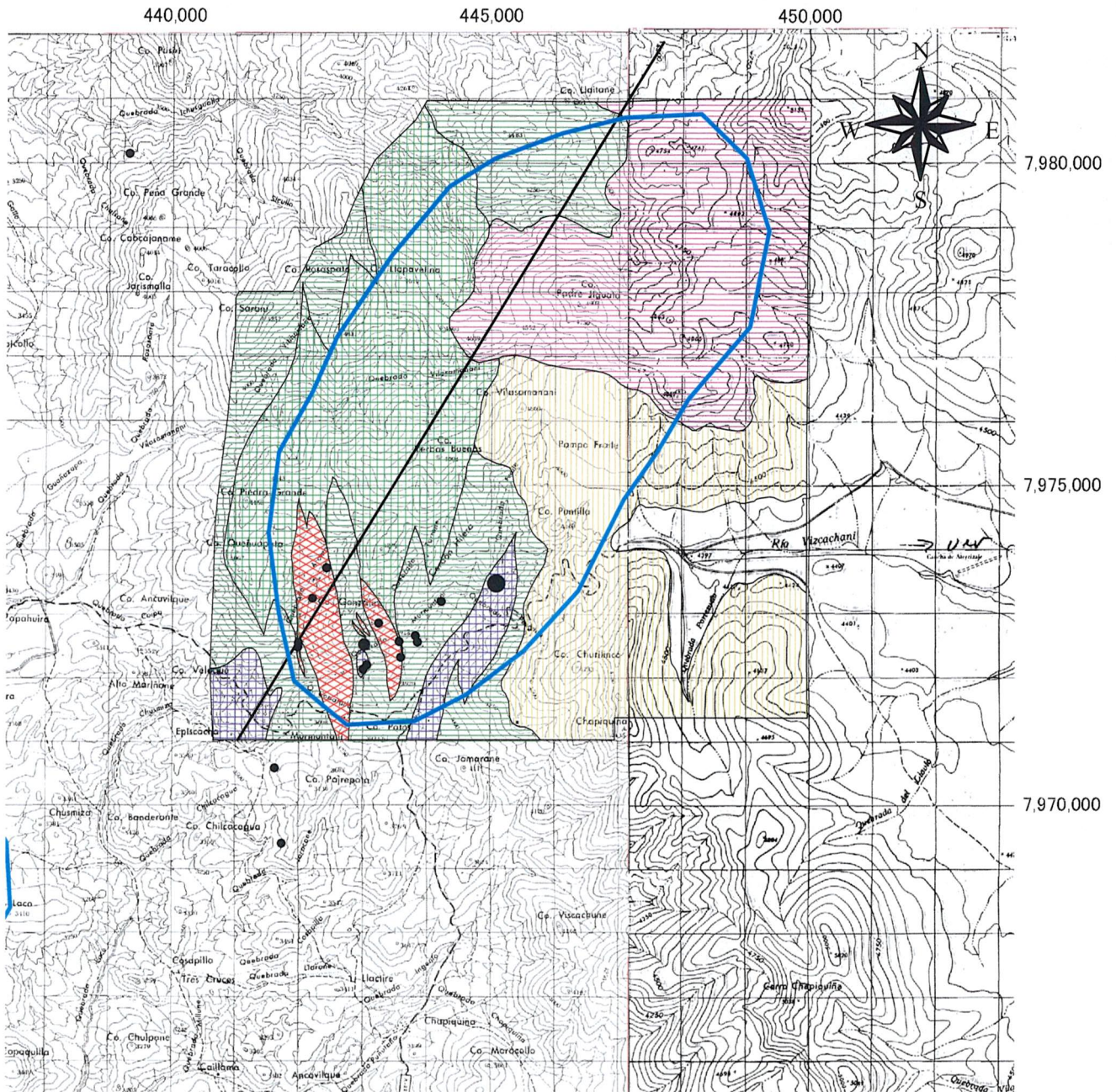


Fig. 2-1-51 (2) Geochemical Anomaly Map in the Area to the South of Putre (As)