

Fig. 2-1-6 (5) Geochemical Anomaly Map in the Pachica Area (Hg)

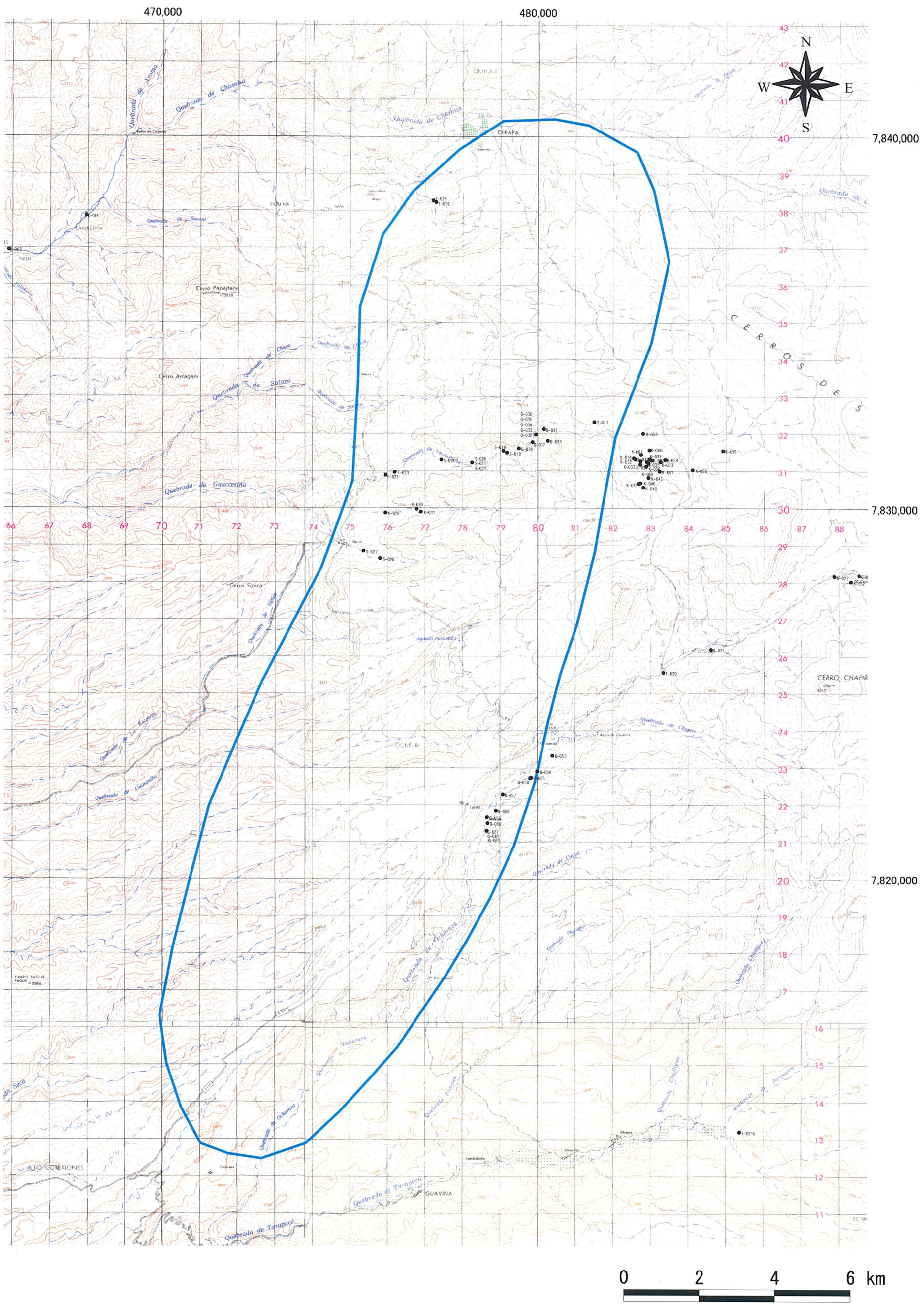


Fig. 2-1-7 Sample Location Map of the Chusmisa Area

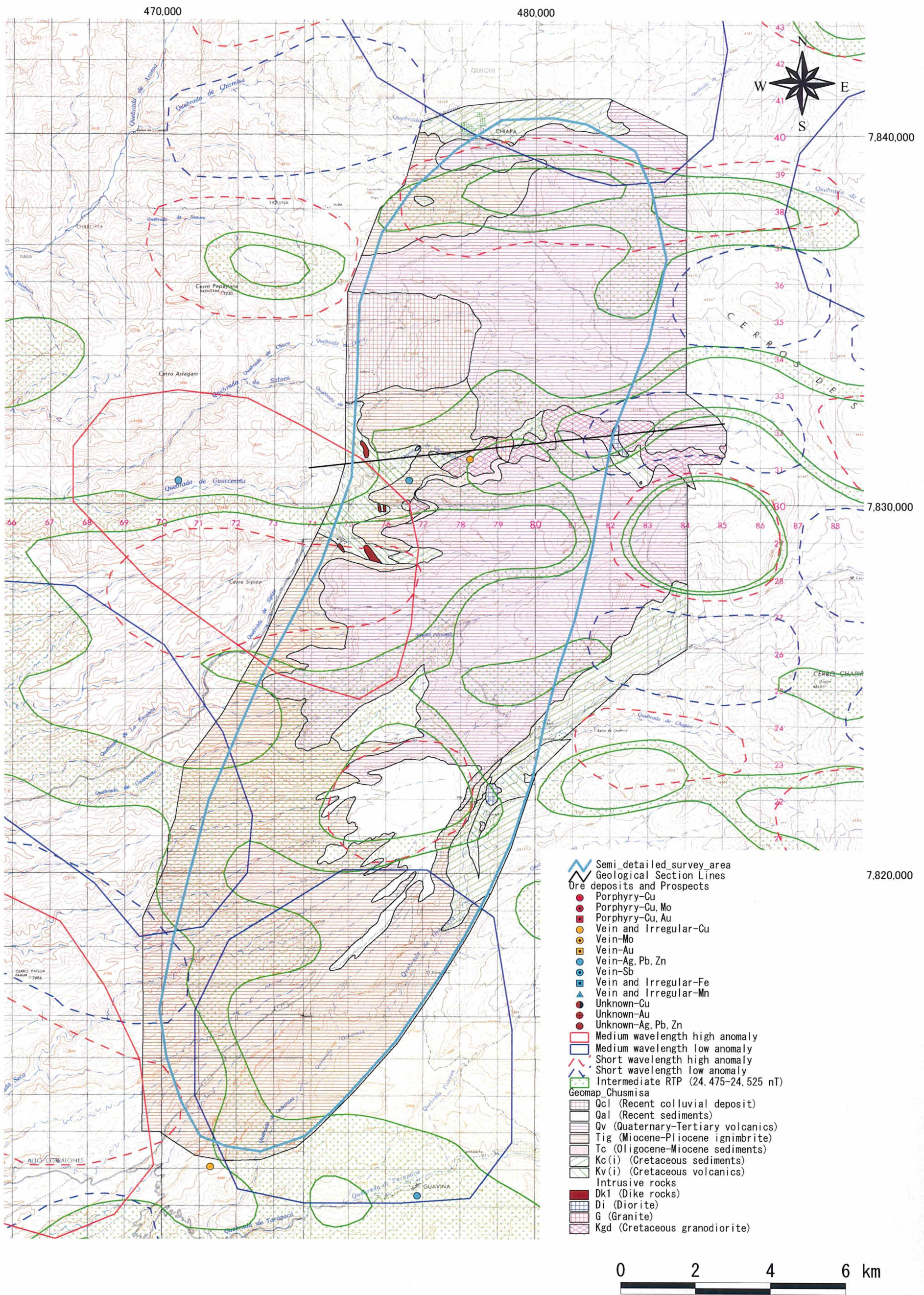
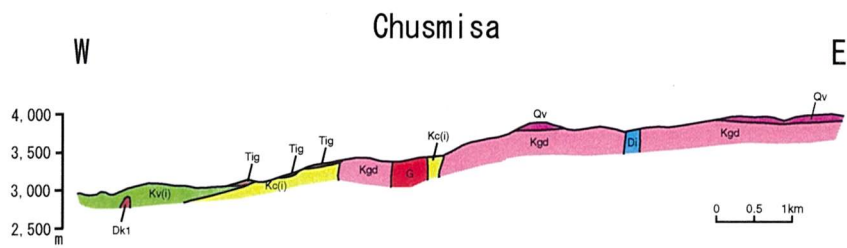


Fig. 2-1-8 Geological Map of the Chusmisa Area



Geologic Time		Columnar Section	Lithology	Intrusives	Mineralization		
CENOZOIC	QUATERNARY	HOLOCENE		Alluvium		Porphry copper type ↑	
	TERTIARY	QUATERNARY ~ TERTIARY		Basalt lava			
		TERTIARY	PLIOCENE ~ MIOCENE		Welded tuff Pumice tuff		
			MIOCENE ~ OLIGOCENE		Conglomerate		
			PALEOGENE				
MESOZOIC	CRETACEOUS	LATE					
		EARLY		Andesitic ~ basaltic lava/ volcaniclastics Tuffaceous sandstone, mudstone, fine-grained conglomerate	Granodiorite (Kgd) ↑ Granite (G) ↑ Diorite (Di) ↑ Dacite (Dk1) ↑		

Fig. 2-1-9 Schematic Stratigraphic Columns and Profiles of the Chusmisa Area

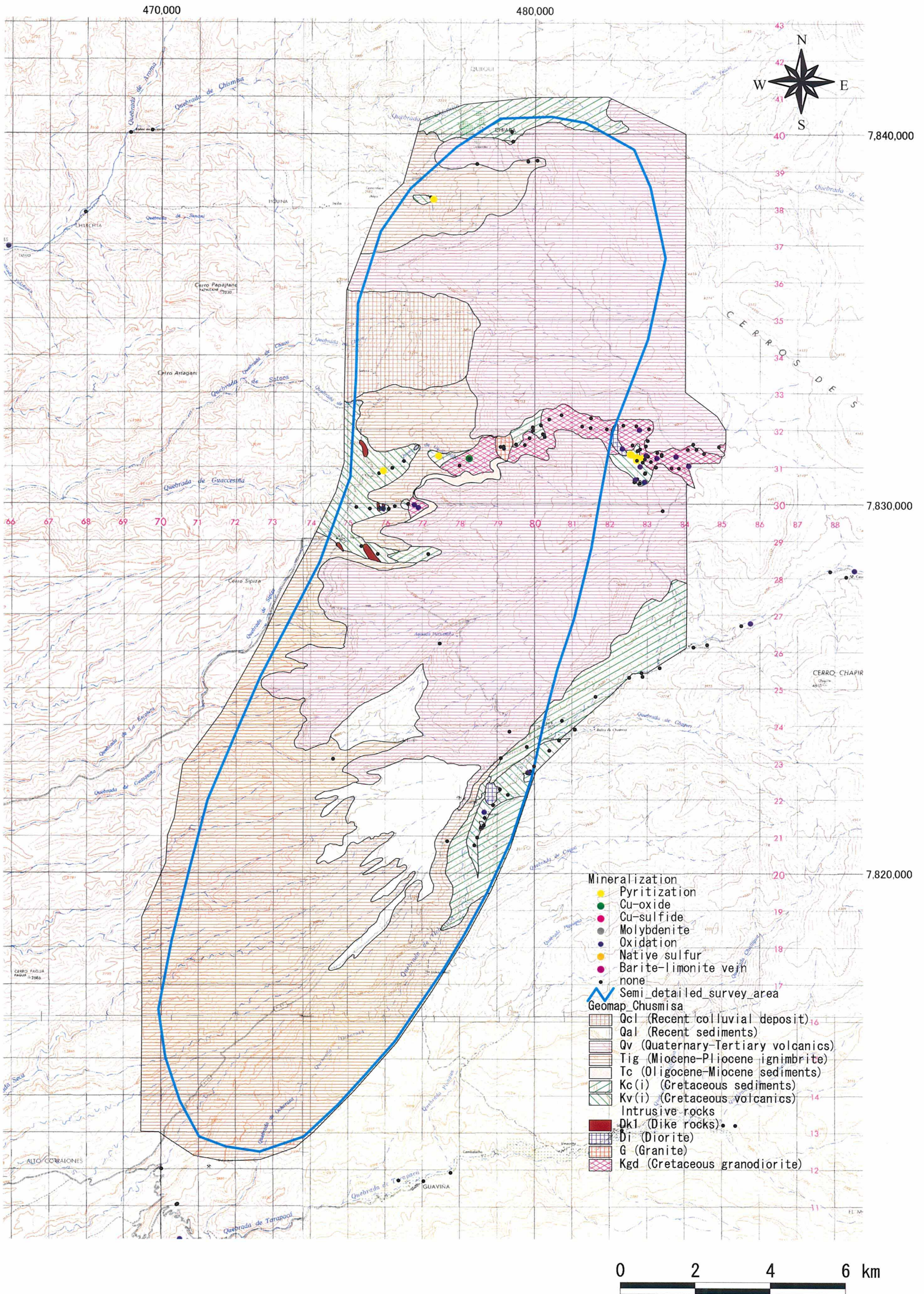


Fig. 2-1-10 Mineralization Map of the Chusmisa Area

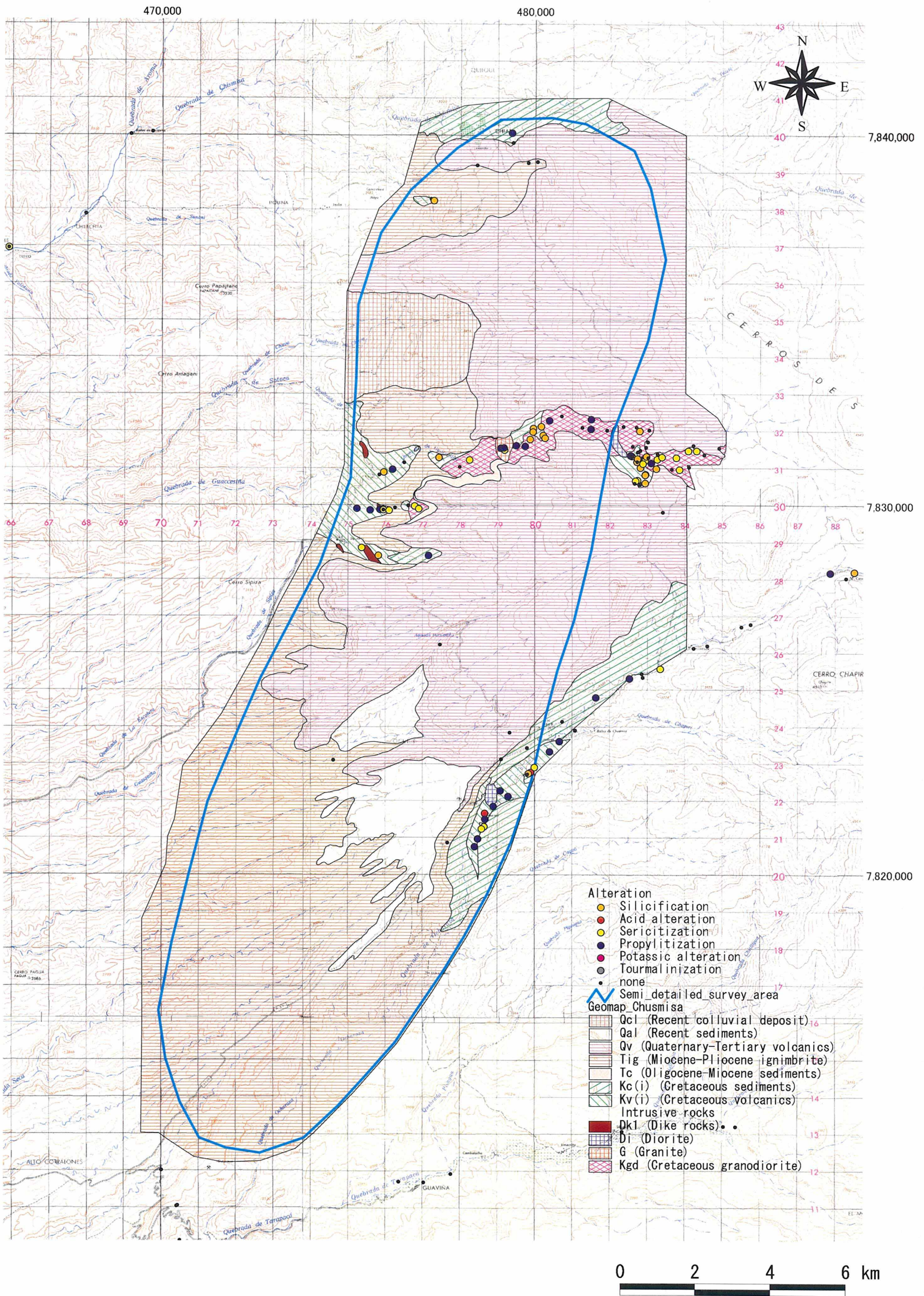


Fig. 2-1-11 Distribution Map of Alteration Minerals at the Chusmisa Area

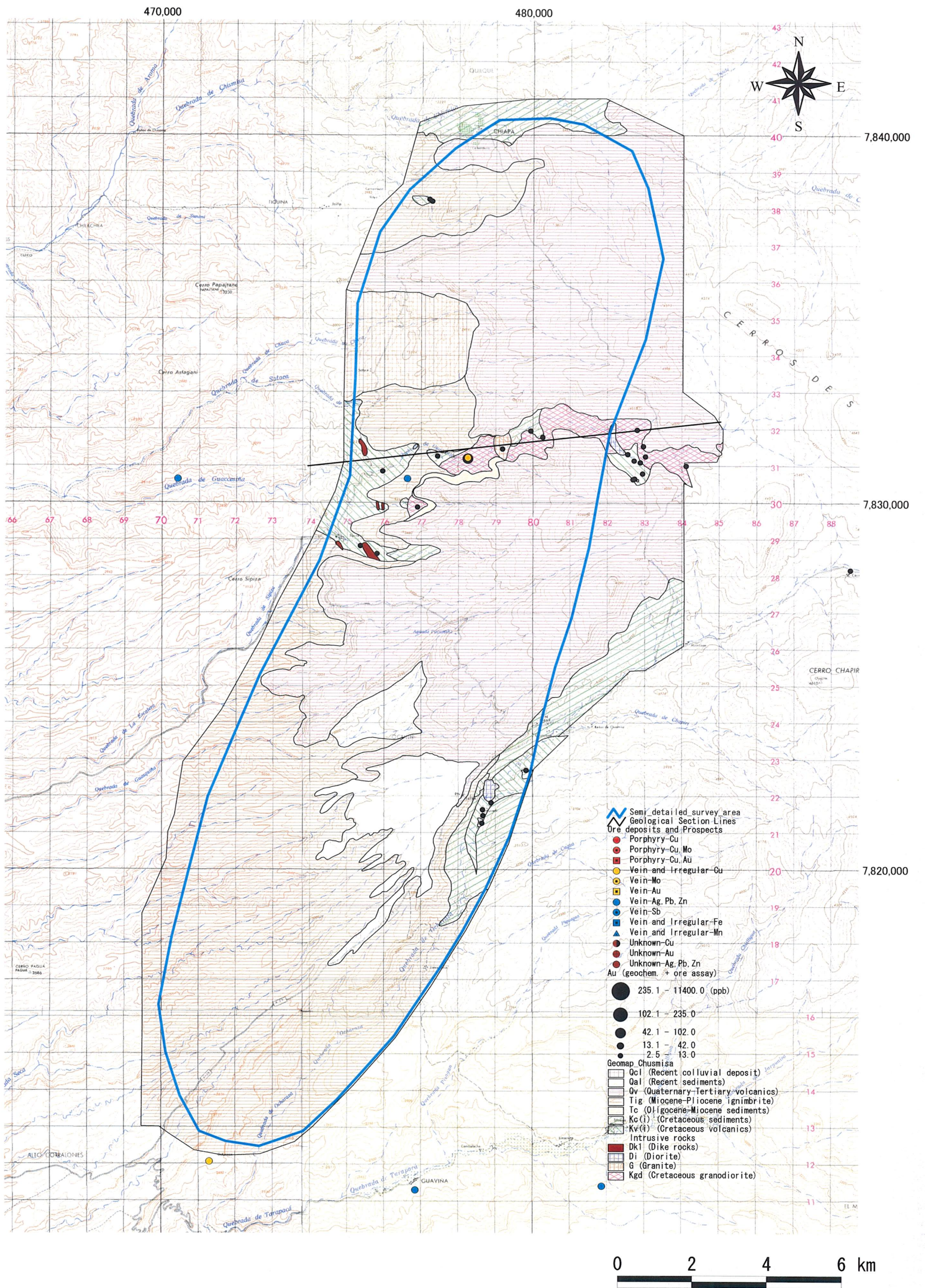


Fig. 2-1-12 (1) Geochemical Anomaly Map in the Chusmisa Area (Au)

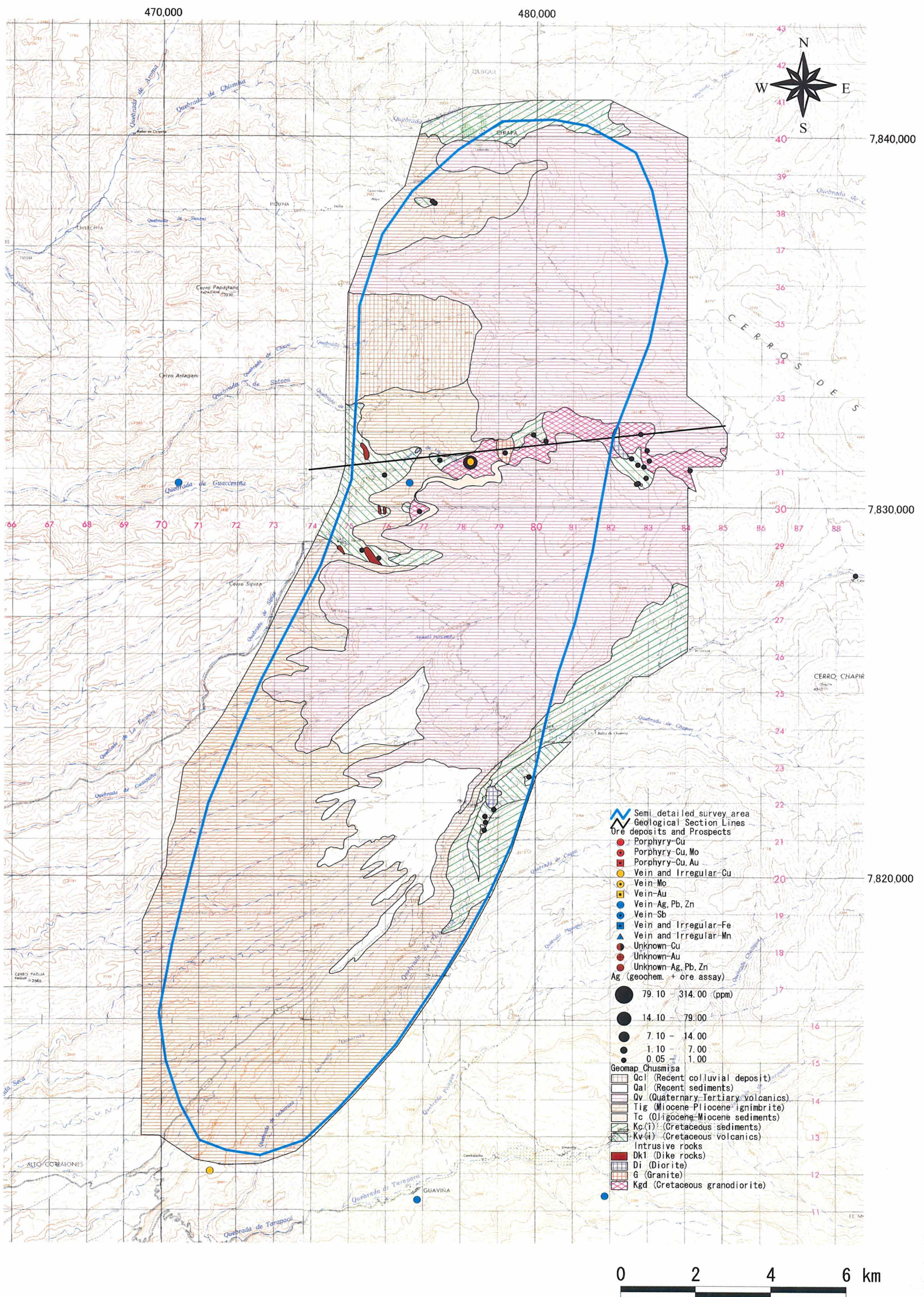


Fig. 2-1-12 (2) Geochemical Anomaly Map in the Chusmisa Area (Ag)