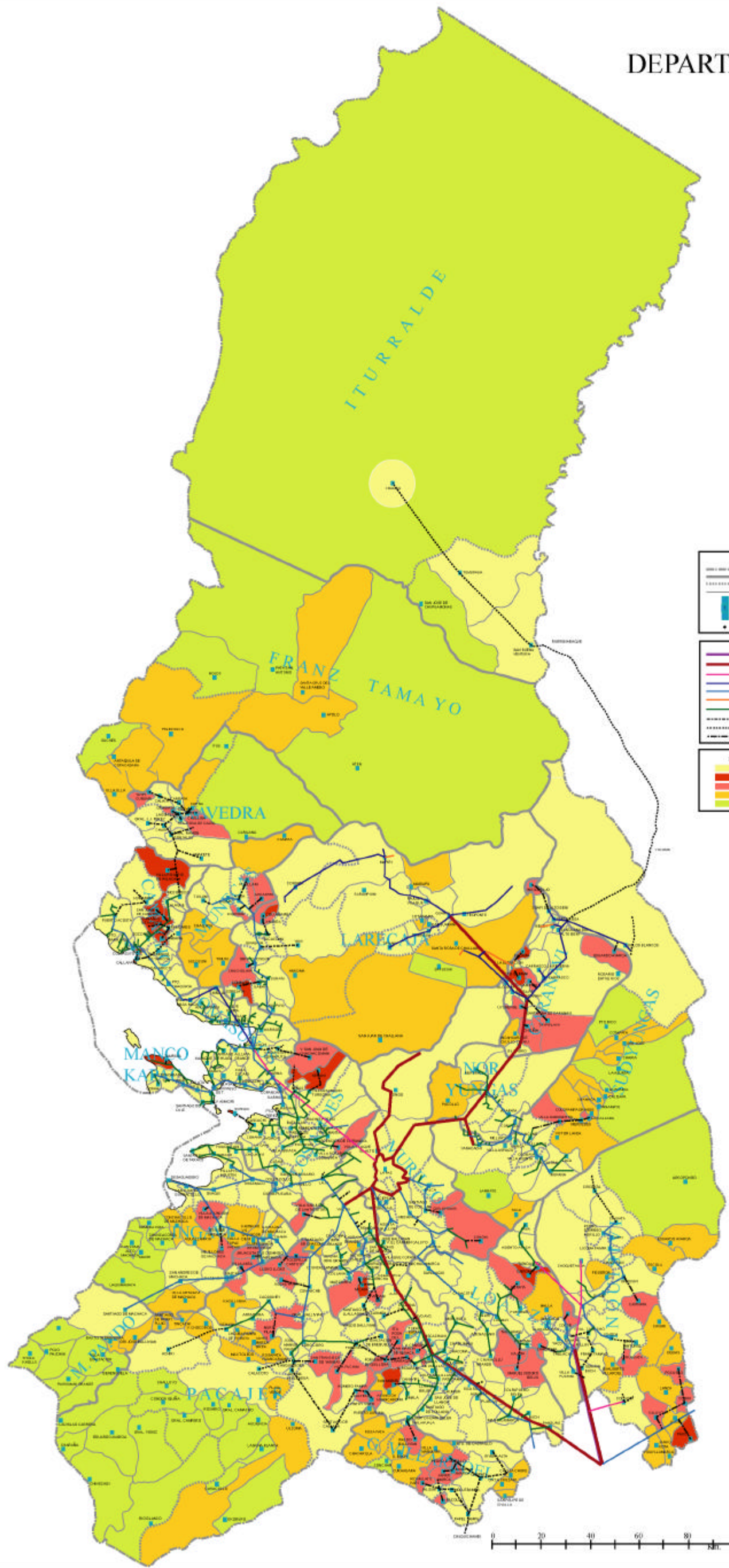


# DEPARTAMENTO DE LA PAZ



**LEGEND**

- Department
- Province
- Municipio
- Canton
- Capital of Canton
- Seat of Canton
- Household Without Electricity
- Community

**LEGEND**

- TL 2000(Ext. 2000)
- TL 1000(Ext. 2000)
- TL 800(Ext. 2000)
- TL 2400(Ext. 2000)
- TL 1100(Ext. 2000)
- TL 1400(Ext. 2000)
- T1, Project (2002)
- T1, Project (2003)
- T1, Project (2011)

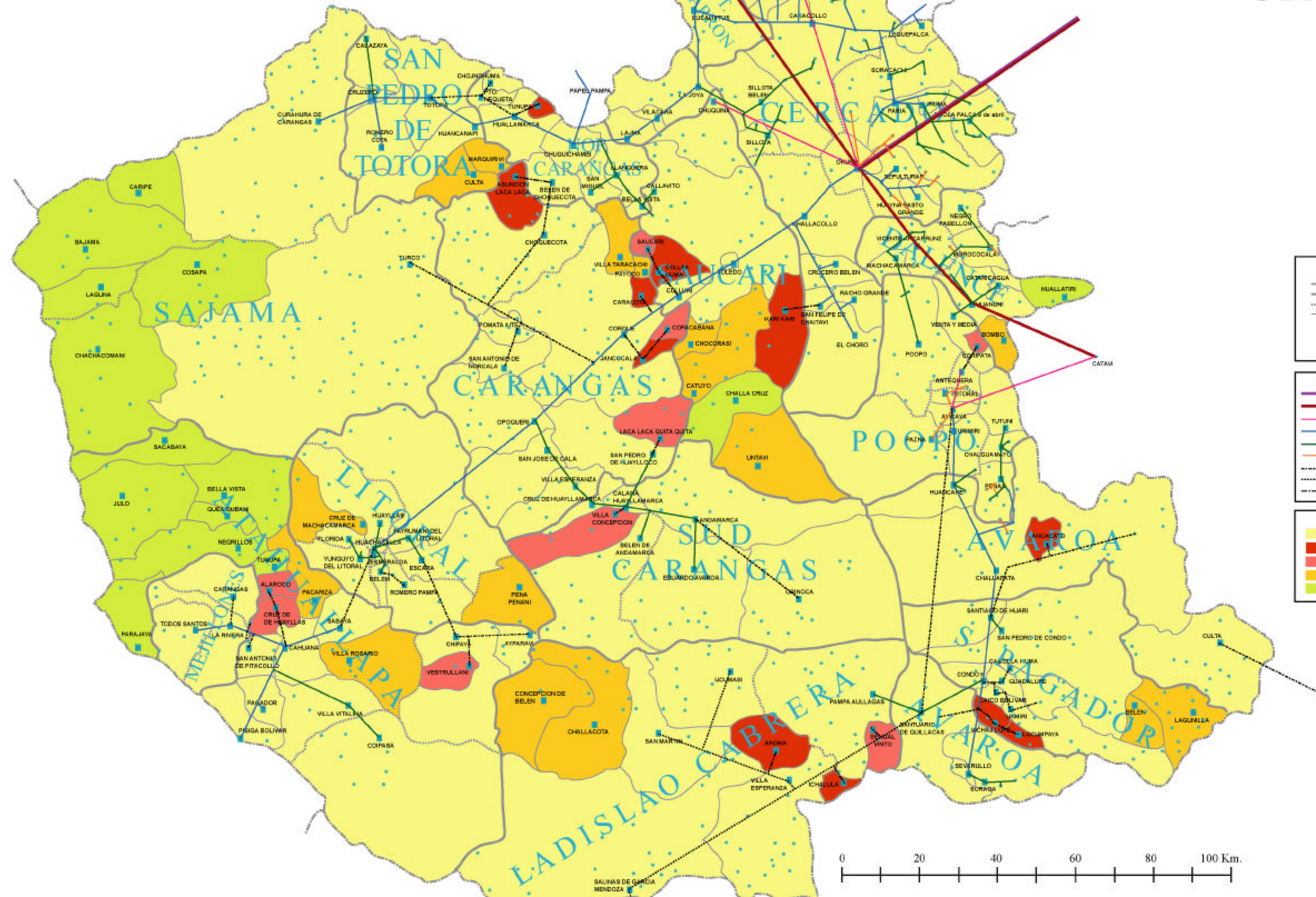
**LEGEND**

- Grid
- Priority A
- Priority B
- Priority C
- Priority D

THE STUDY ON RURAL ELECTRIFICATION IMPLEMENTATION PLAN BY RENEWABLE ENERGY IN THE REPUBLIC OF BOLIVIA  
JAPAN INTERNATIONAL COOPERATION AGENCY

Figure 8.13  
Projected Grid Line Extension Plan by 2011 (La Paz)

# DEPARTAMENTO DE ORURO



**LEGEND**

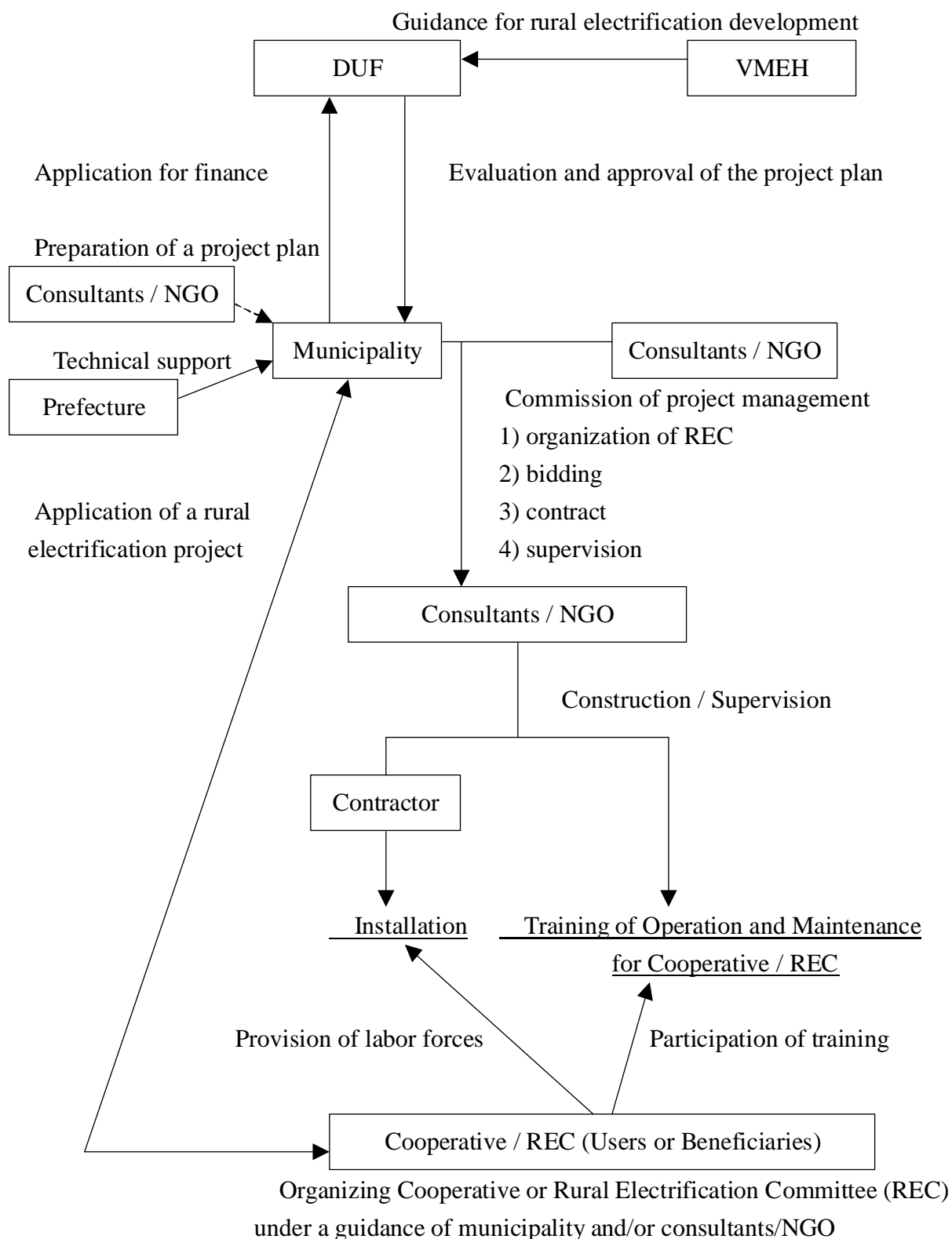
- Department
- Province
- Municipio
- Canton
- Capital of Canton
- Serial of Canton
- Household Without Elec.
- Community

**LEGEND of Transmission Line**

- T/L 230kV (Exist. 2000)
- T/L 115kV (Exist. 2000)
- T/L 89kV (Exist. 2000)
- T/L 24.9kV (Exist. 2000)
- T/L 14.4 kV (Exist. 2000)
- T/L 6.6 kV (Exist. 2000)
- T/L Proyecto (2001)
- T/L Proyecto (~2006)
- T/L Proyecto (~2011)

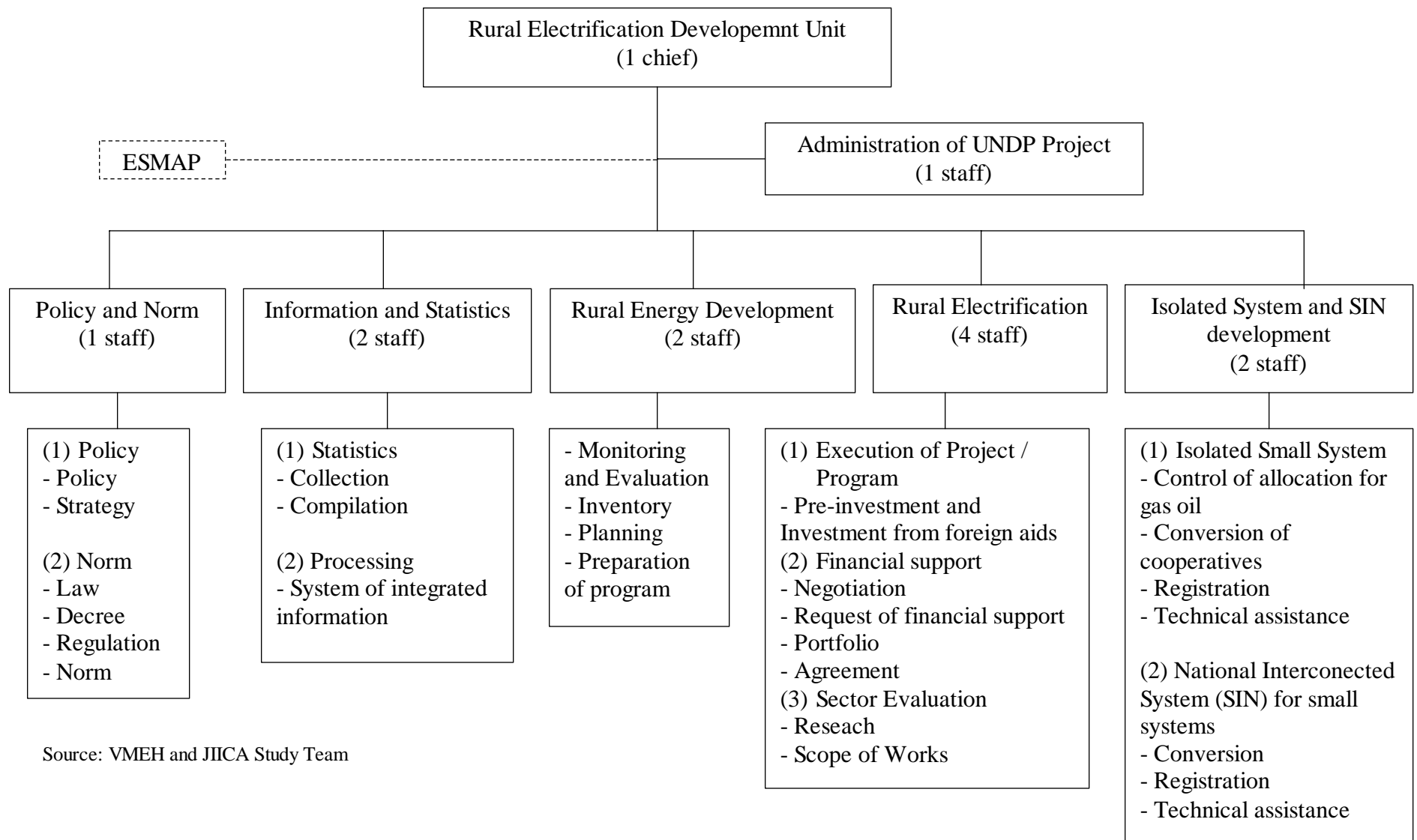
**LEGEND**

- Grid
- Priority A
- Priority B
- Priority C
- Priority D



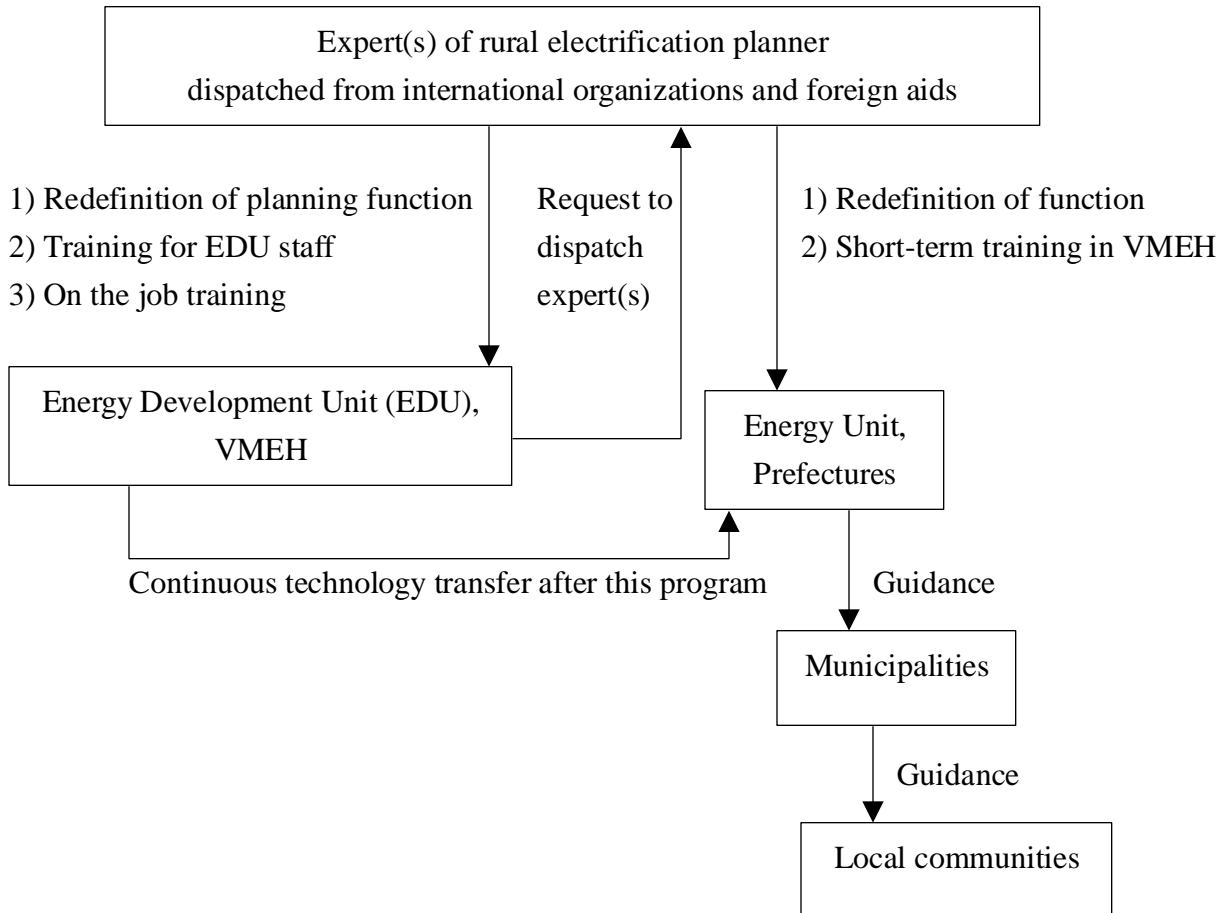
**Figure 8.15 Proposed Project Implementation for Renewable Energy Project**

Source: JICA Study Team



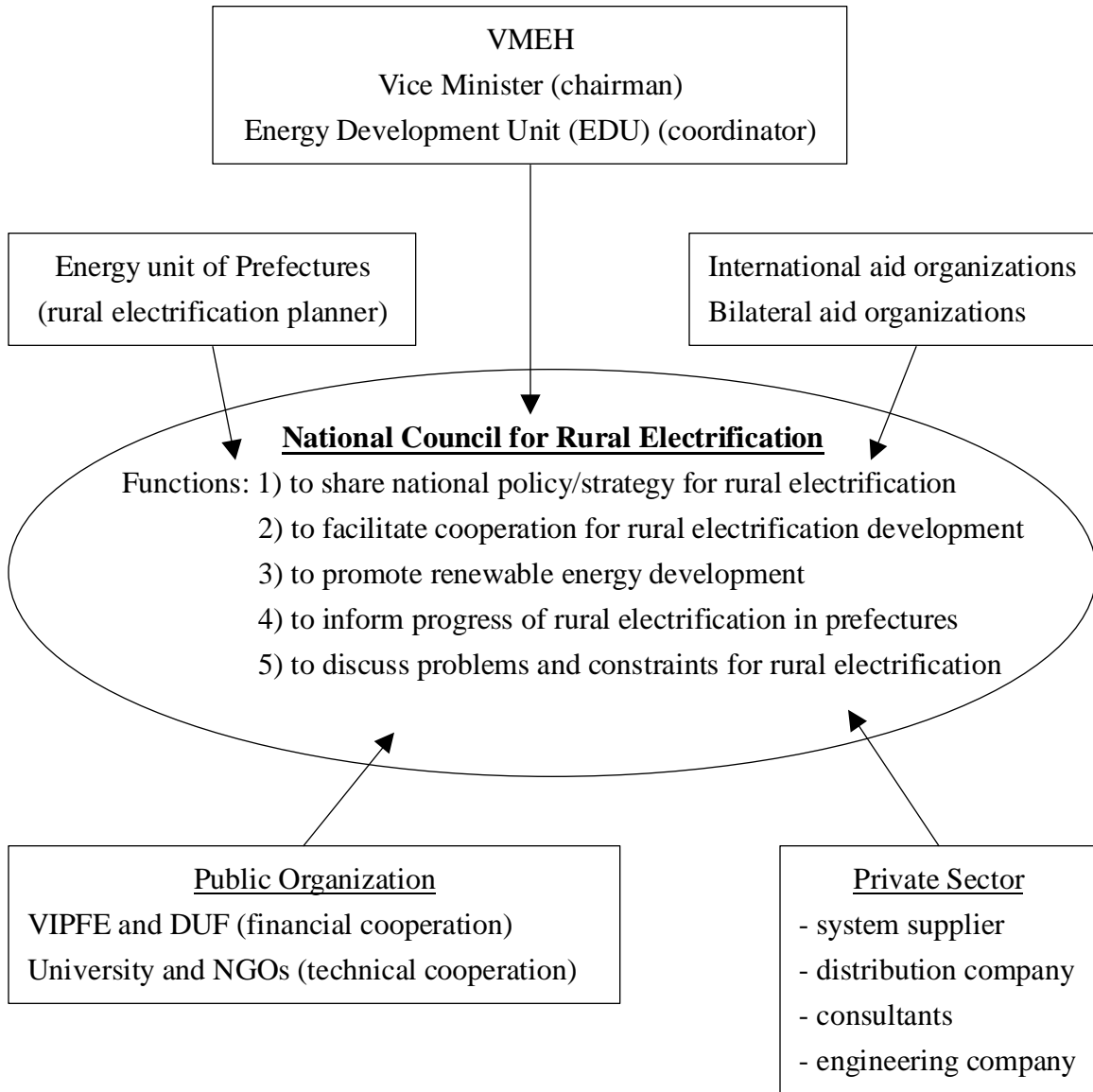
Source: VMEH and JICA Study Team

**Figure 9.1 Proposed Organization Chart of Rural Electrification Development Unit**



**Figure 9.2 Flow Chart of Strengthening of the EDU Staff**

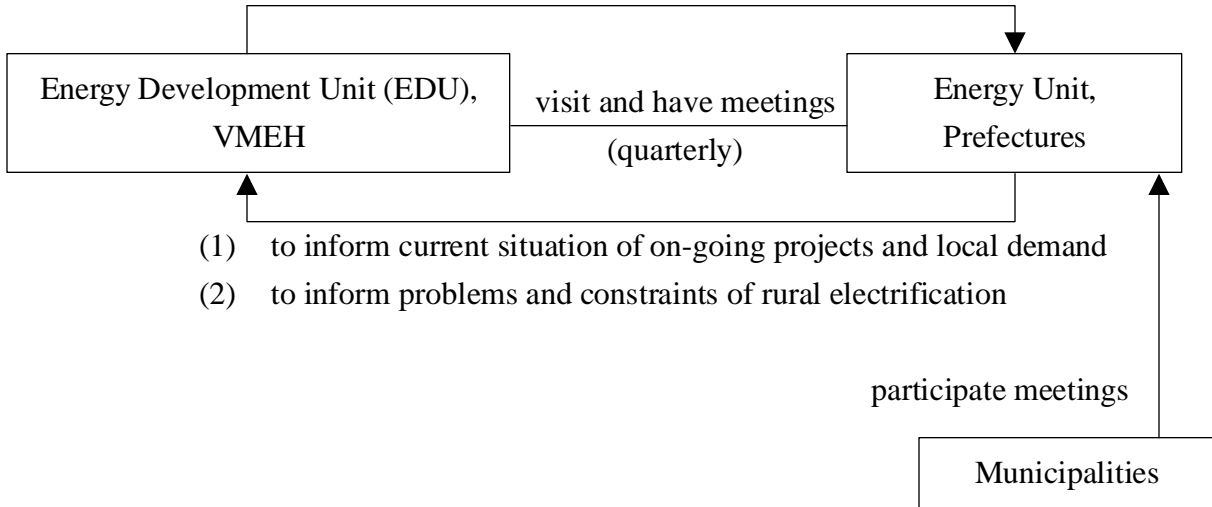
Source: JICA Study Team



**Figure 9.3 Proposed National Council for Rural Electrification**

Source: JICA Study Team

- (1) to inform national policy and strategy for rural electrification
- (2) to assist technology for rural electrification development
- (3) to coordinate for financial arrangement



- (1) to inform current situation of on-going projects and local demand
- (2) to inform problems and constraints of rural electrification

**Figure 9.4 Proposed Regular Meeting with Local Government by VMEH Staff**

Source: JICA Study Team