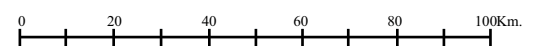
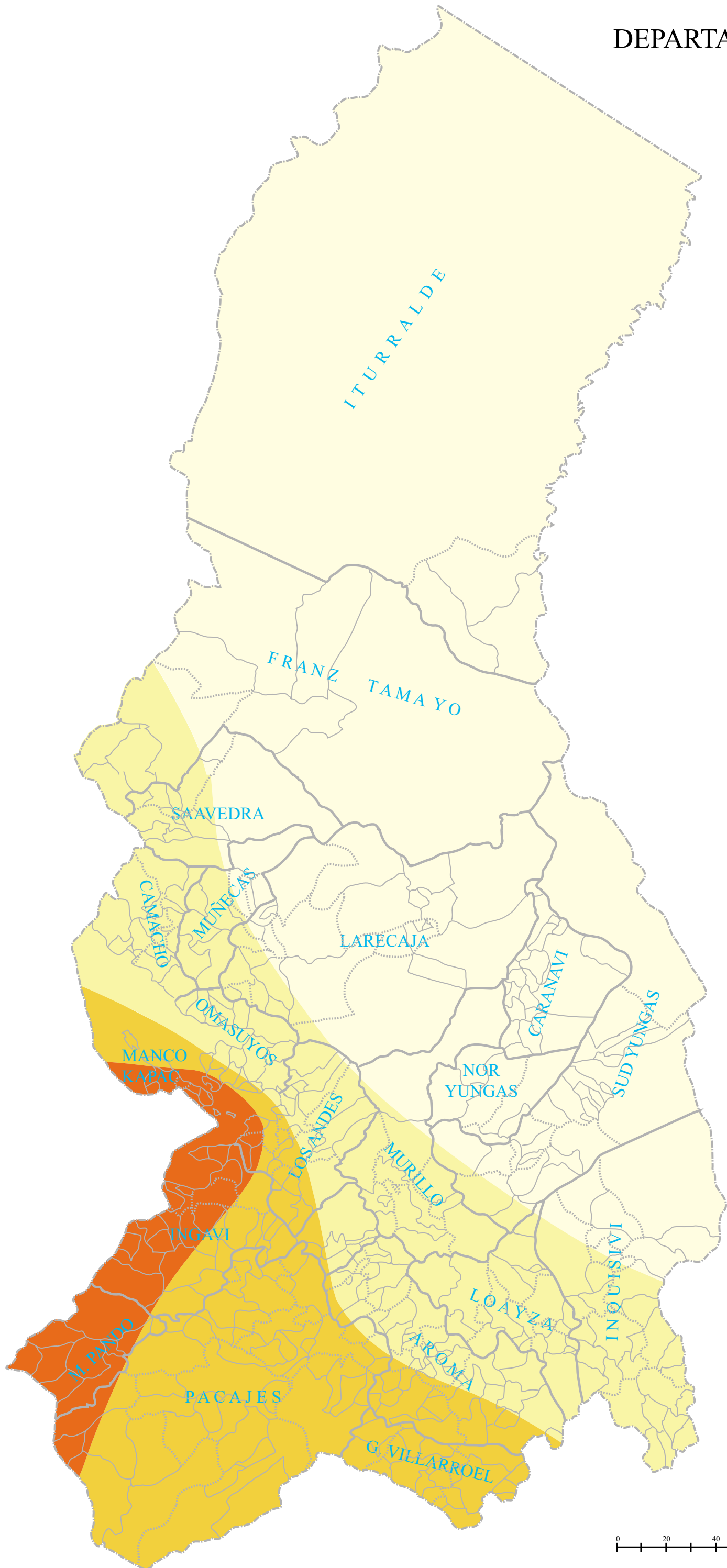
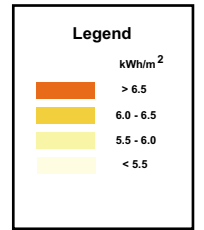


DEPARTAMENTO DE LA PAZ

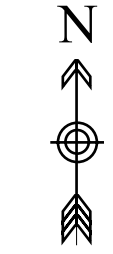
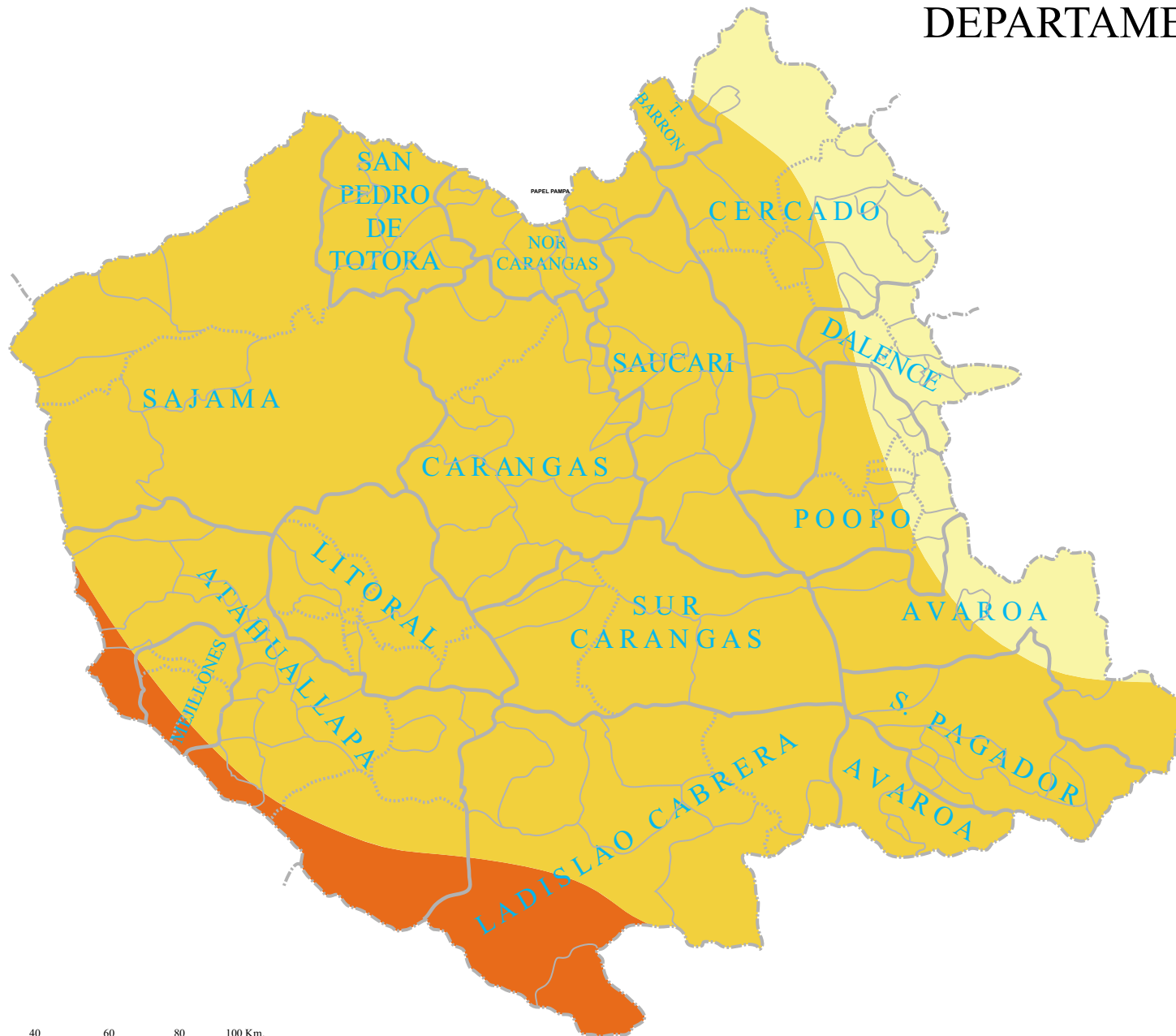


THE STUDY ON RURAL ELECTRIFICATION
 IMPLEMENTATION PLAN BY RENEWABLE ENERGY
 IN THE REPUBLIC OF BOLIVIA
 JAPAN INTERNATIONAL COOPERATION AGENCY

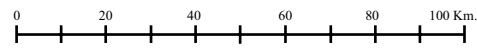
Figure 8.5

PV Potential Map (La Paz)
 (2002-2006 , 2007-2011)

DEPARTAMENTO DE ORURO



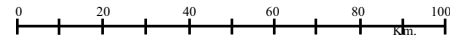
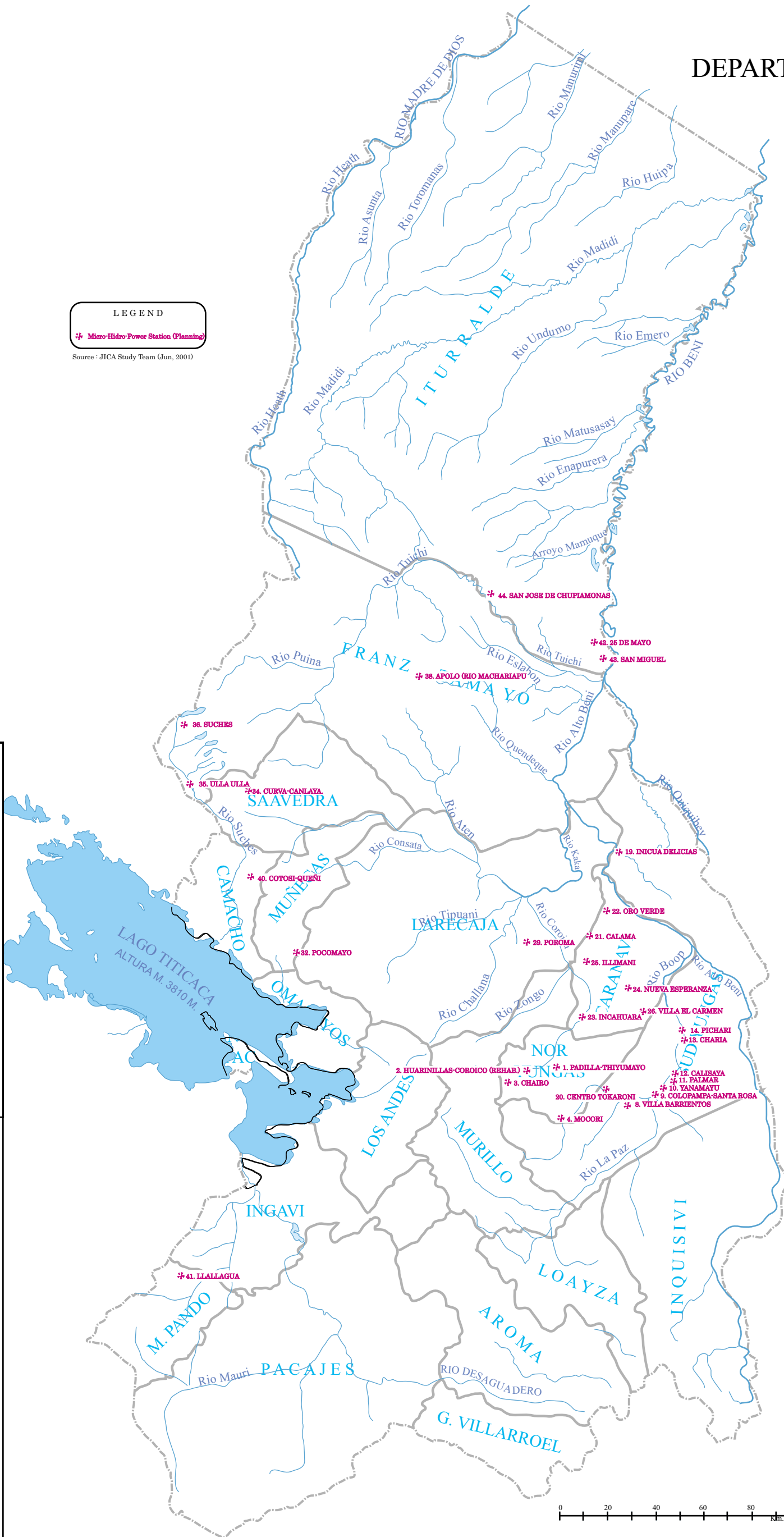
Legend	
kWh/m ²	
	> 6.5
	6.0 - 6.5
	5.5 - 6.0
	< 5.5



DEPARTAMENTO DE LA PAZ

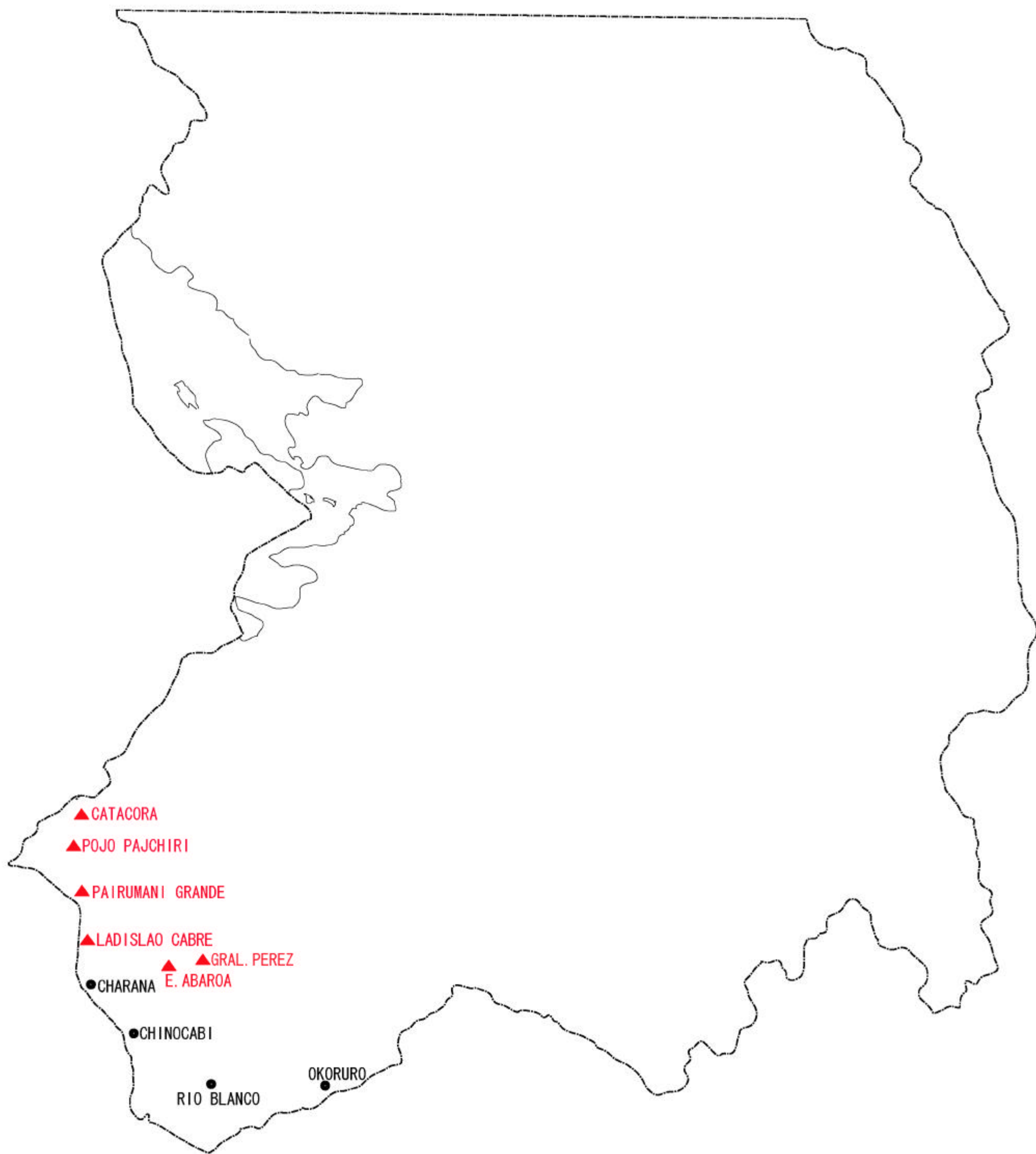


LEGEND
 * Micro-Hidro Power Station (Planning)
 Source : JICA Study Team (Jun, 2001)



THE STUDY ON RURAL ELECTRIFICATION IMPLEMENTATION PLAN BY RENEWABLE ENERGY IN THE REPUBLIC OF BOLIVIA
 JAPAN INTERNATIONAL COOPERATION AGENCY

Figure 8.7
 Selected Priority Micro-Hydro Power Project
 (2002-2006; 2007-2011) (La Paz)



- Wind Power Development Plan 2002 -2006
- ▲ Wind Power Development Plan 2007 -2011

0 20 40 60 80 100 Km.

Figure 8.9 Wind Power Development Plan, La Paz

JICA Study Team

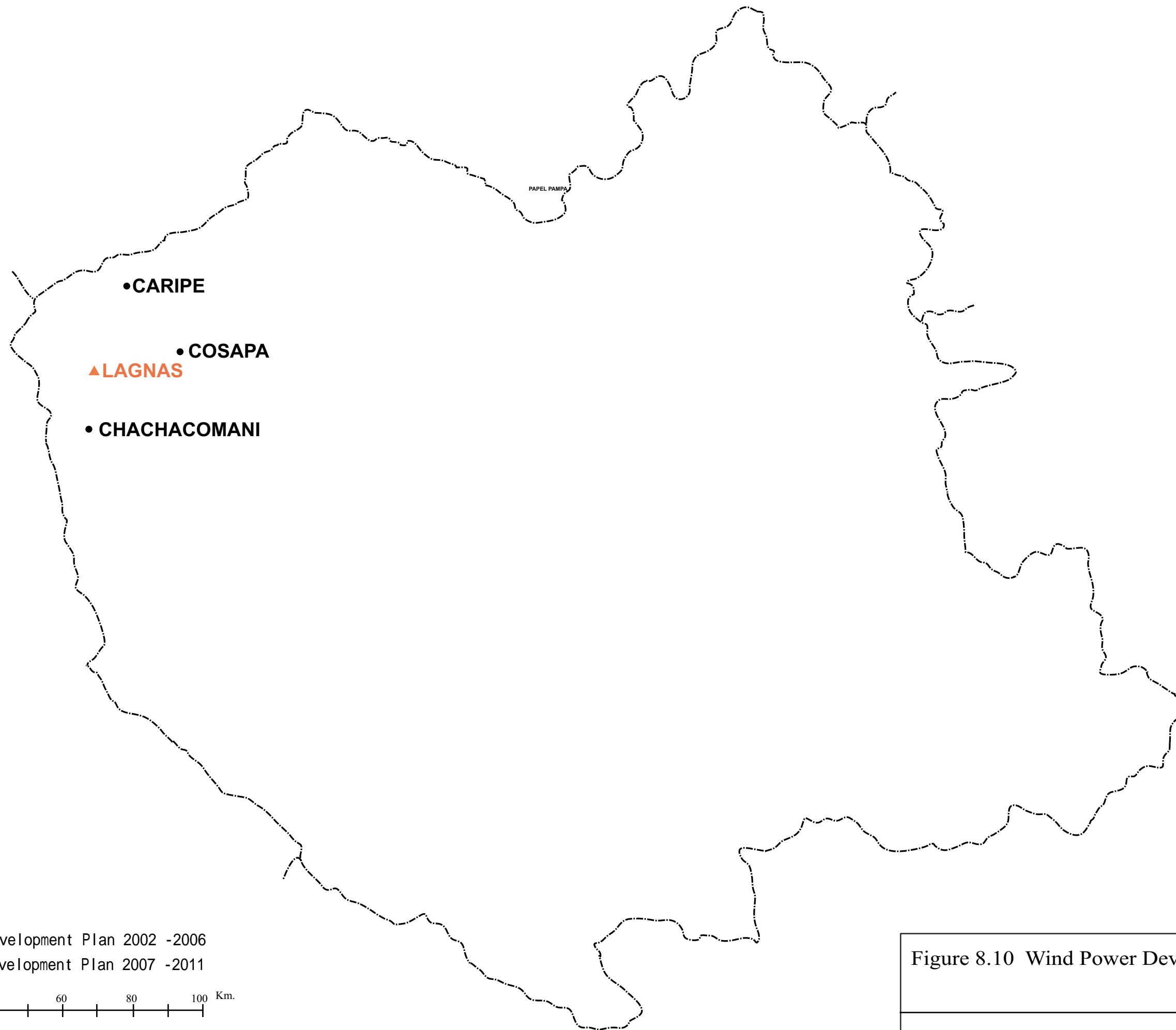
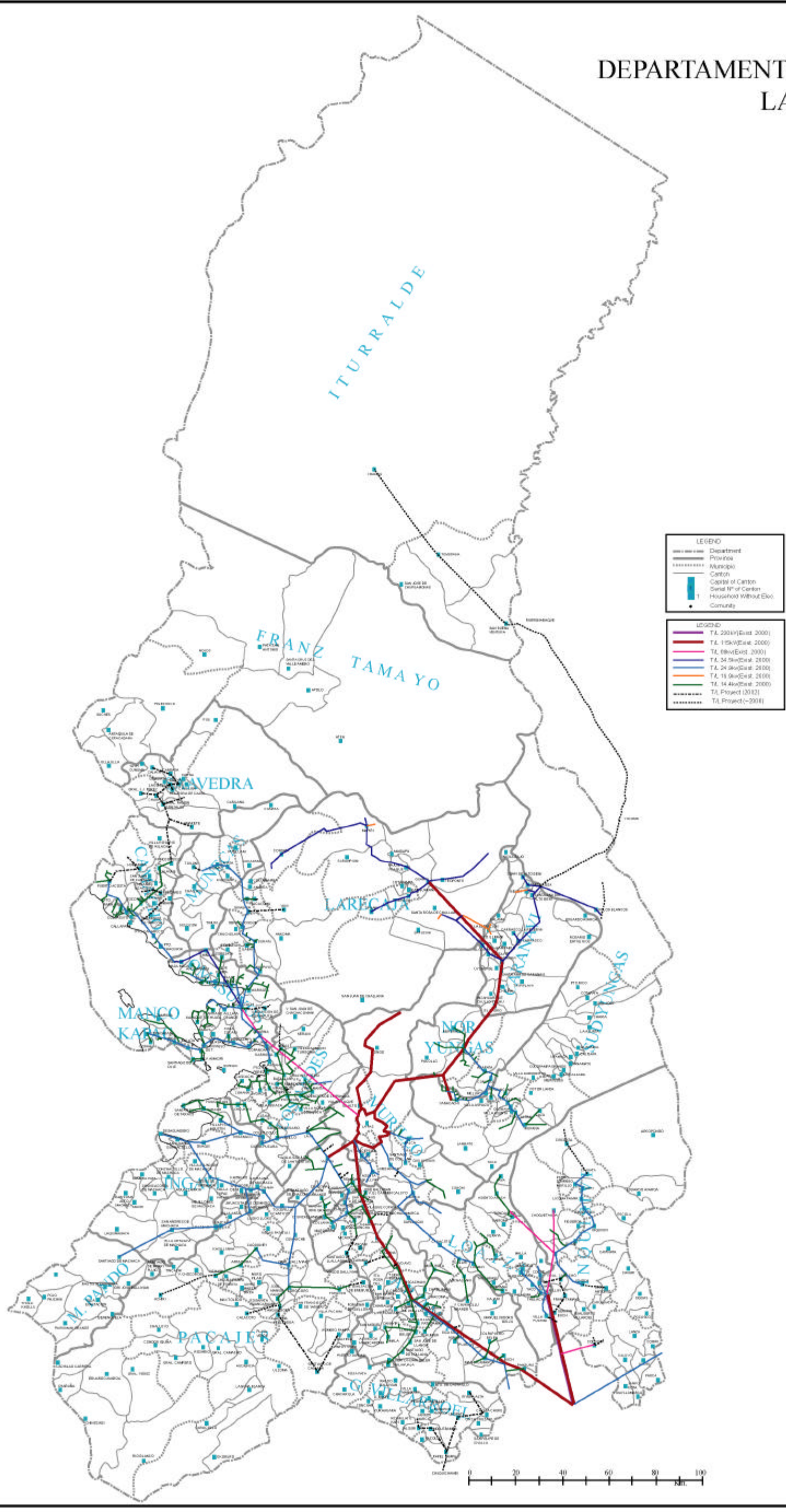


Figure 8.10 Wind Power Development Plan, Oruro

JICA Study Team

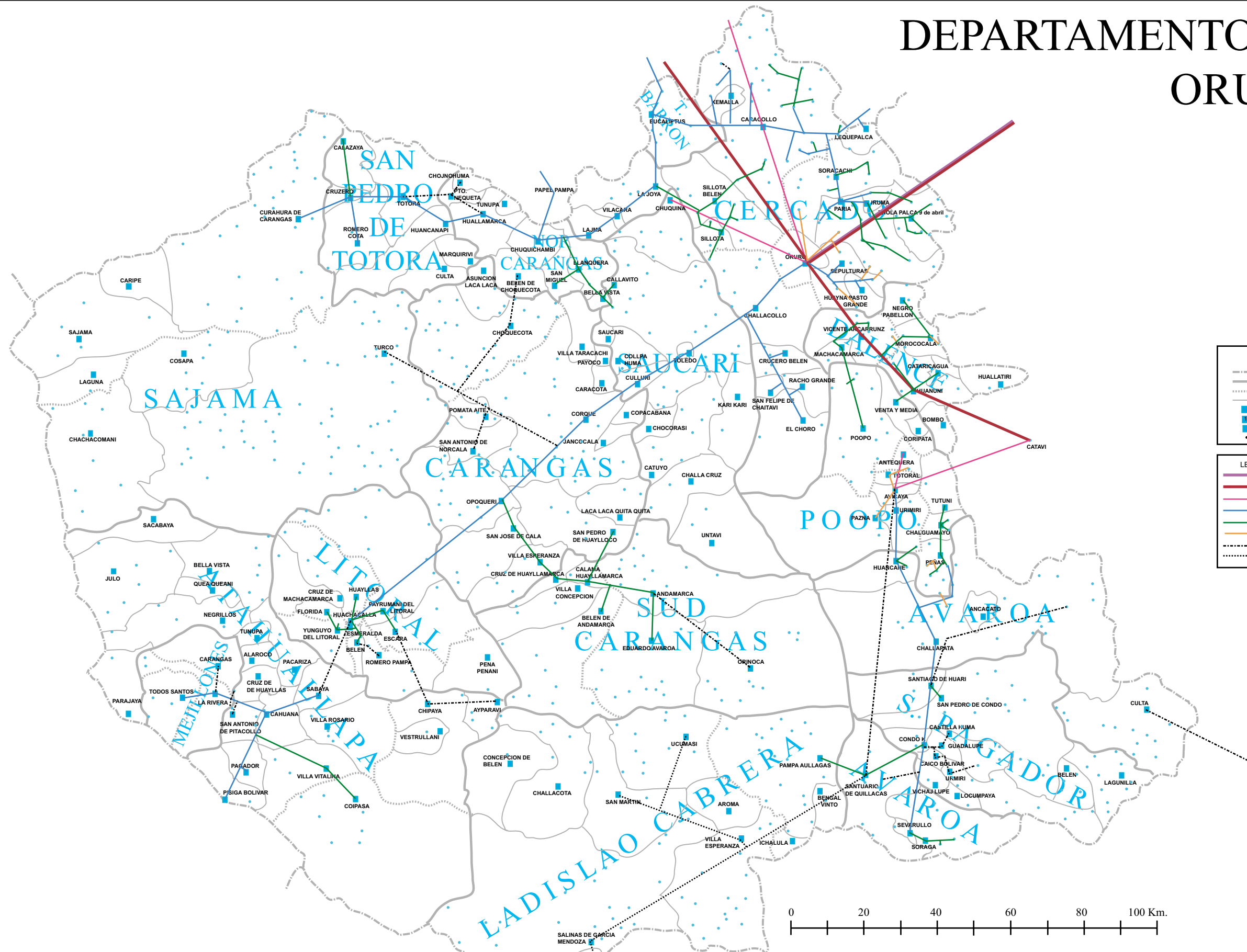
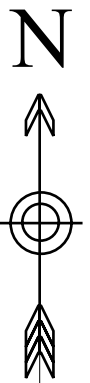
DEPARTAMENTO DE LA PAZ



THE STUDY ON RURAL ELECTRIFICATION
IMPLEMENTATION PLAN BY RENEWABLE ENERGY
IN THE REPUBLIC OF BOLIVIA
JAPAN INTERNATIONAL COOPERATION AGENCY

Figure 8.11
Projected Grid Line Extension Plan by 2006 (La Paz)

DEPARTAMENTO DE ORURO

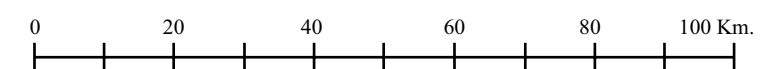


LEGEND

- Department
- Province
- Municipio
- Canton
- Capital of Canton
- Serial of Canton
- Household Without Elec.
- Community

LEGEND of Transmission Line

- T/L 230kV (Exist. 2000)
- T/L 115kV (Exist. 2000)
- T/L 69kv (Exist. 2000)
- T/L 24.9kv (Exist. 2000)
- T/L 14.4 kv. (Exist. 2000)
- T/L 6.6 kv. (Exist. 2000)
- T/L Proyecto (2001)
- T/L Proyecto (~2006)



THE STUDY ON RURAL ELECTRIFICATION
IMPLEMENTATION PLAN BY RENEWABLE ENERGY
IN THE REPUBLIC OF BOLIVIA
JAPAN INTERNATIONAL COOPERATION AGENCY

Figure 8.12
Projected Grid Line Extension Plan by 2006 (Oruro)