

LEGEND

- 4.5 Annual Average Wind Speed (m/s)
20 meters above ground level
- > 4.0 m/s (High Potential Area)

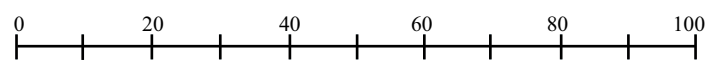
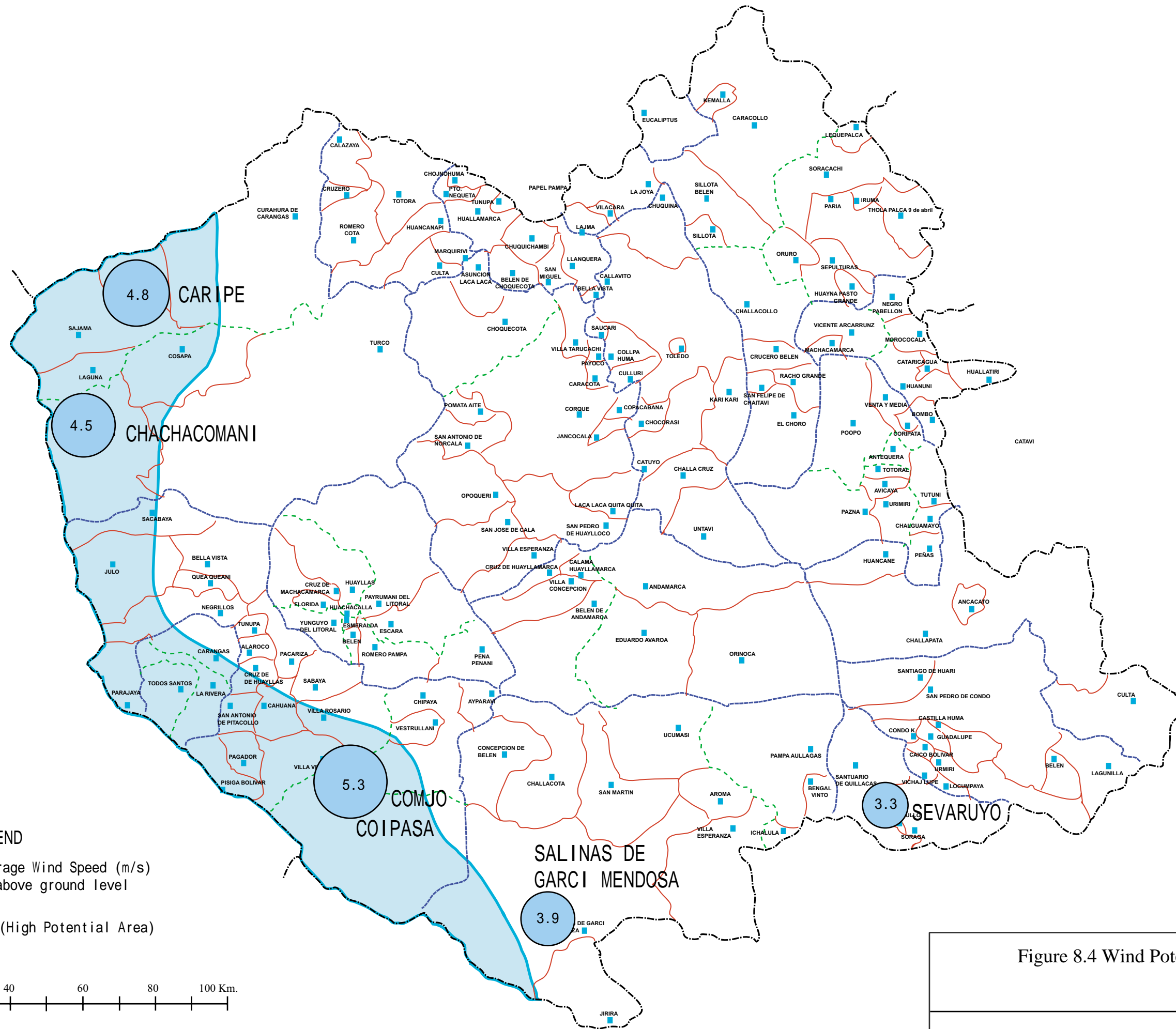
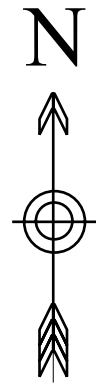


Figure 8.3 Wind Potential Map La Paz



LEGEND

- 4.5 Annual Average Wind Speed (m/s) 20 meters above ground level
- > 4.0 m/s (High Potential Area)

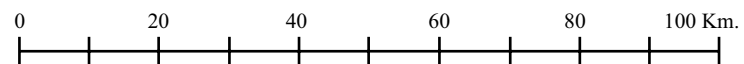
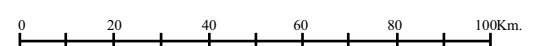
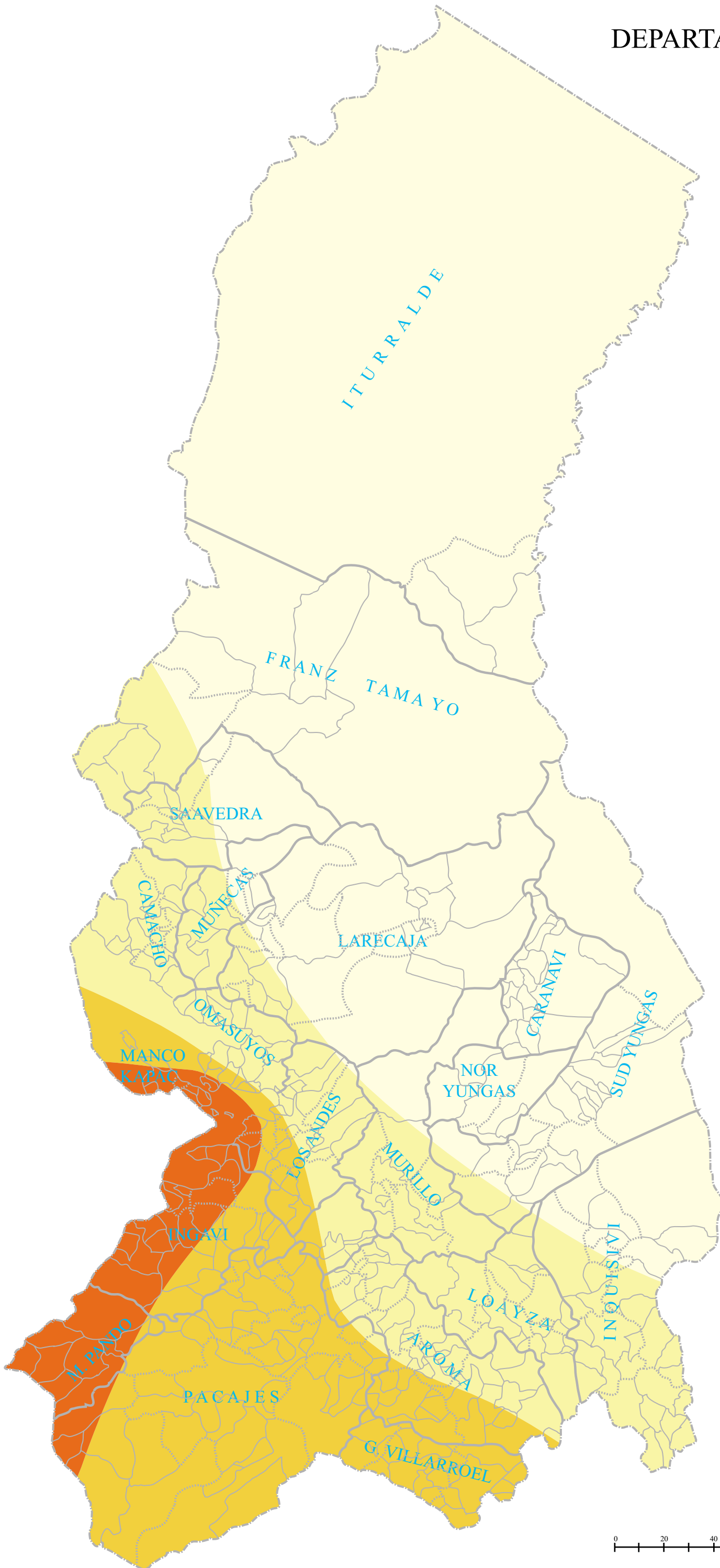
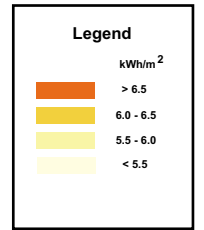


Figure 8.4 Wind Potential Map Oruro

JICA Study Team

DEPARTAMENTO DE LA PAZ

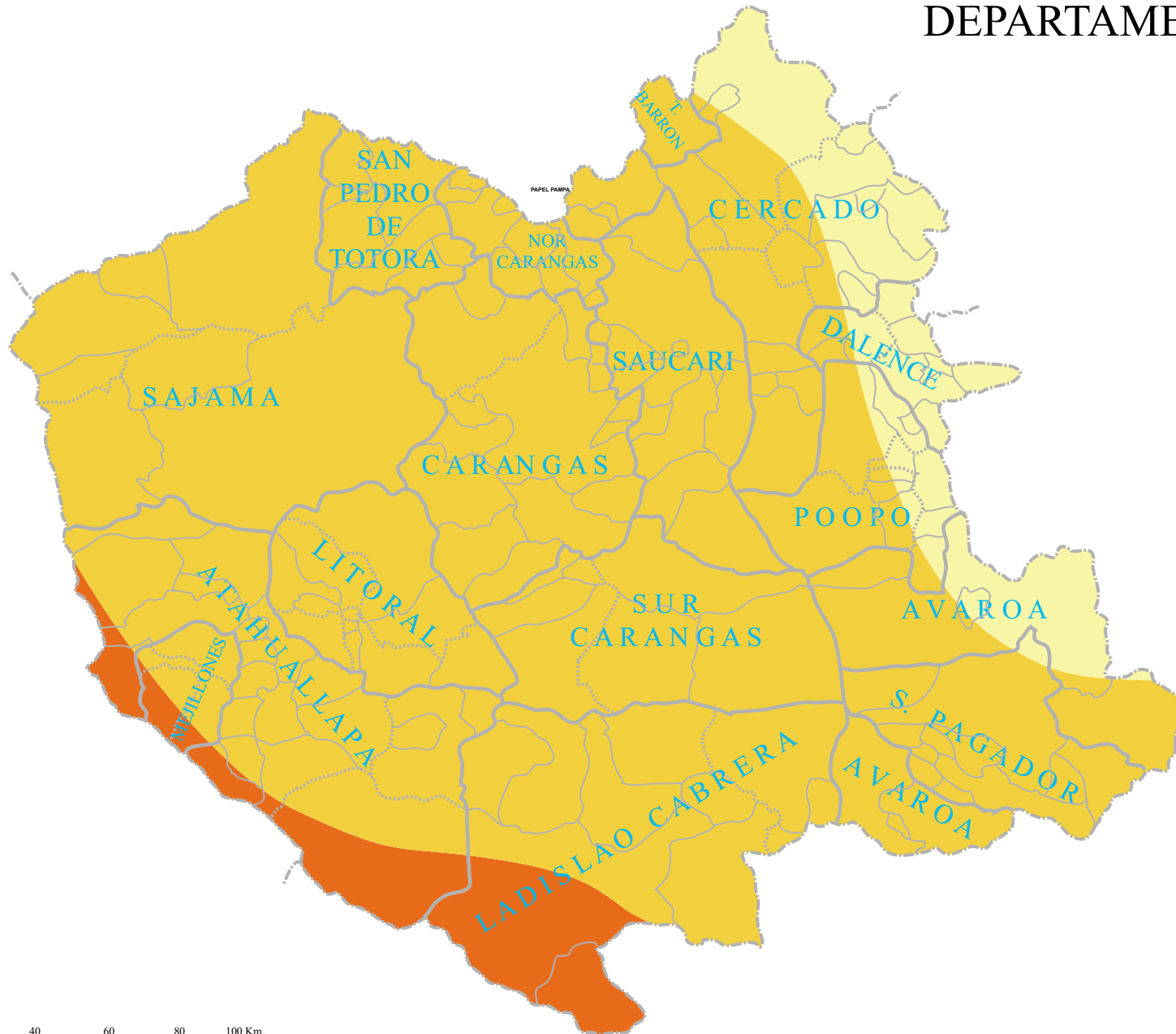


THE STUDY ON RURAL ELECTRIFICATION
 IMPLEMENTATION PLAN BY RENEWABLE ENERGY
 IN THE REPUBLIC OF BOLIVIA
 JAPAN INTERNATIONAL COOPERATION AGENCY

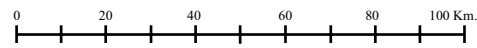
Figure 8.5

PV Potential Map(La Paz)
 (2002-2006 , 2007-2011)

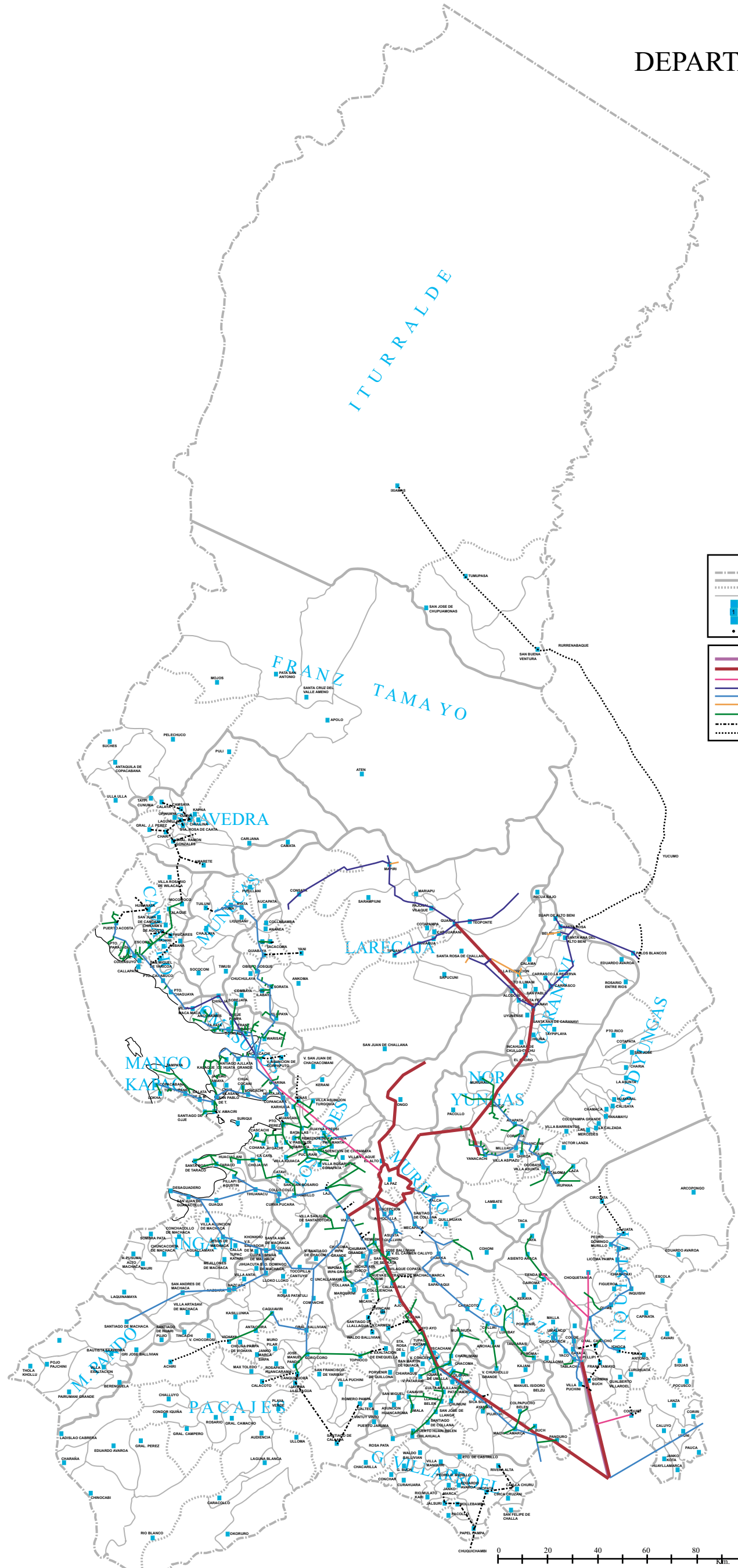
DEPARTAMENTO DE ORURO



Legend	
kWh/m ²	
	> 6.5
	6.0 - 6.5
	5.5 - 6.0
	< 5.5



DEPARTAMENTO DE LA PAZ

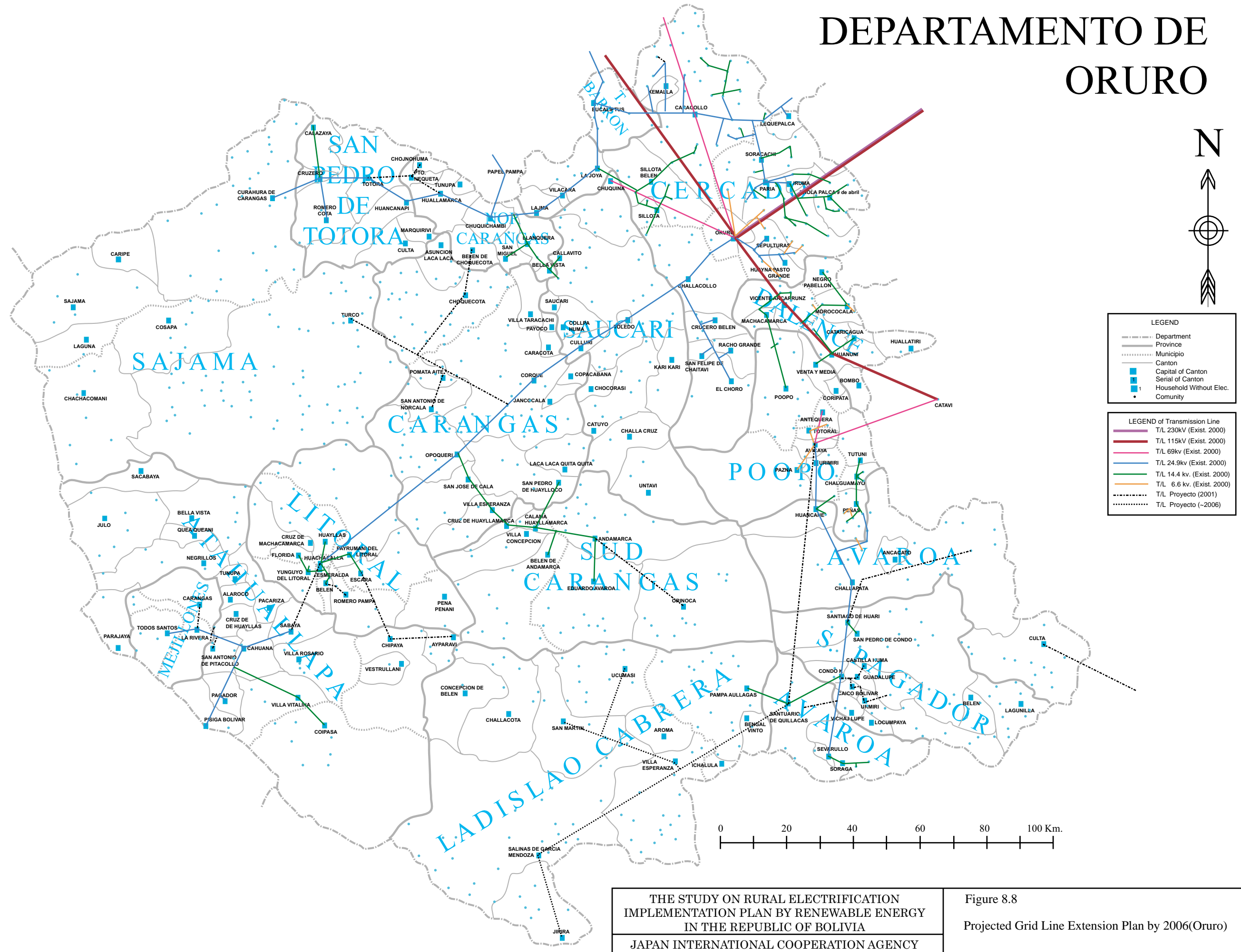


LEGEND	
—	Department
—	Province
—	Municipio
.....	Cantón
■	Capital of Canton
1	Serial Nº of Canton
•	Household Without Elec.
•	Community

LEGEND	
—	T/L 230kV(Exist. 2000)
—	T/L 115kV(Exist. 2000)
—	T/L 69kV(Exist. 2000)
—	T/L 34.5kV(Exist. 2000)
—	T/L 24.9kV(Exist. 2000)
—	T/L 19.9kV(Exist. 2000)
—	T/L 14.4kV(Exist. 2000)
.....	T/L Project (2002)
.....	T/L Project (~2006)

THE STUDY ON RURAL ELECTRIFICATION IMPLEMENTATION PLAN BY RENEWABLE ENERGY IN THE REPUBLIC OF BOLIVIA
 JAPAN INTERNATIONAL COOPERATION AGENCY
 Figure 8.7
 Projected Grid Line Extension Plan by 2006(La Paz)

DEPARTAMENTO DE ORURO



DEPARTAMENTO DE LA PAZ



LEGEND

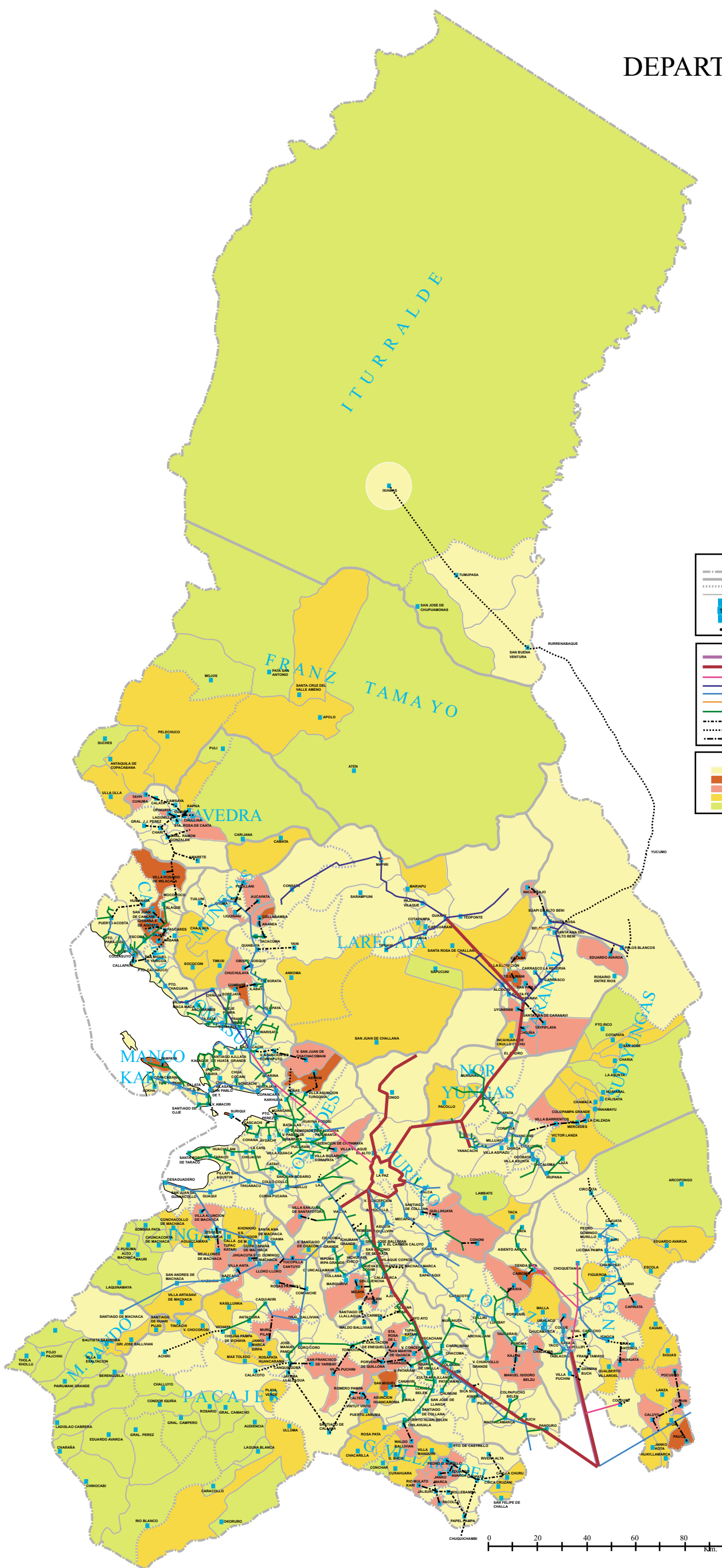
- Department
- Province
- Municipio
- Cantón
- Capital of Canton
- Serial Nº of Canton
- Household Without Elec.
- Community

LEGEND

- T/L 230kV(Exist. 2000)
- T/L 115kV(Exist. 2000)
- T/L 69kV(Exist. 2000)
- T/L 34.5kV(Exist. 2000)
- T/L 24.9kV(Exist. 2000)
- T/L 19.9kV(Exist. 2000)
- T/L 14.4kV(Exist. 2000)
- T/L Project (2002)
- T/L Project (-2006)
- T/L Project (-2011)

LEGEND

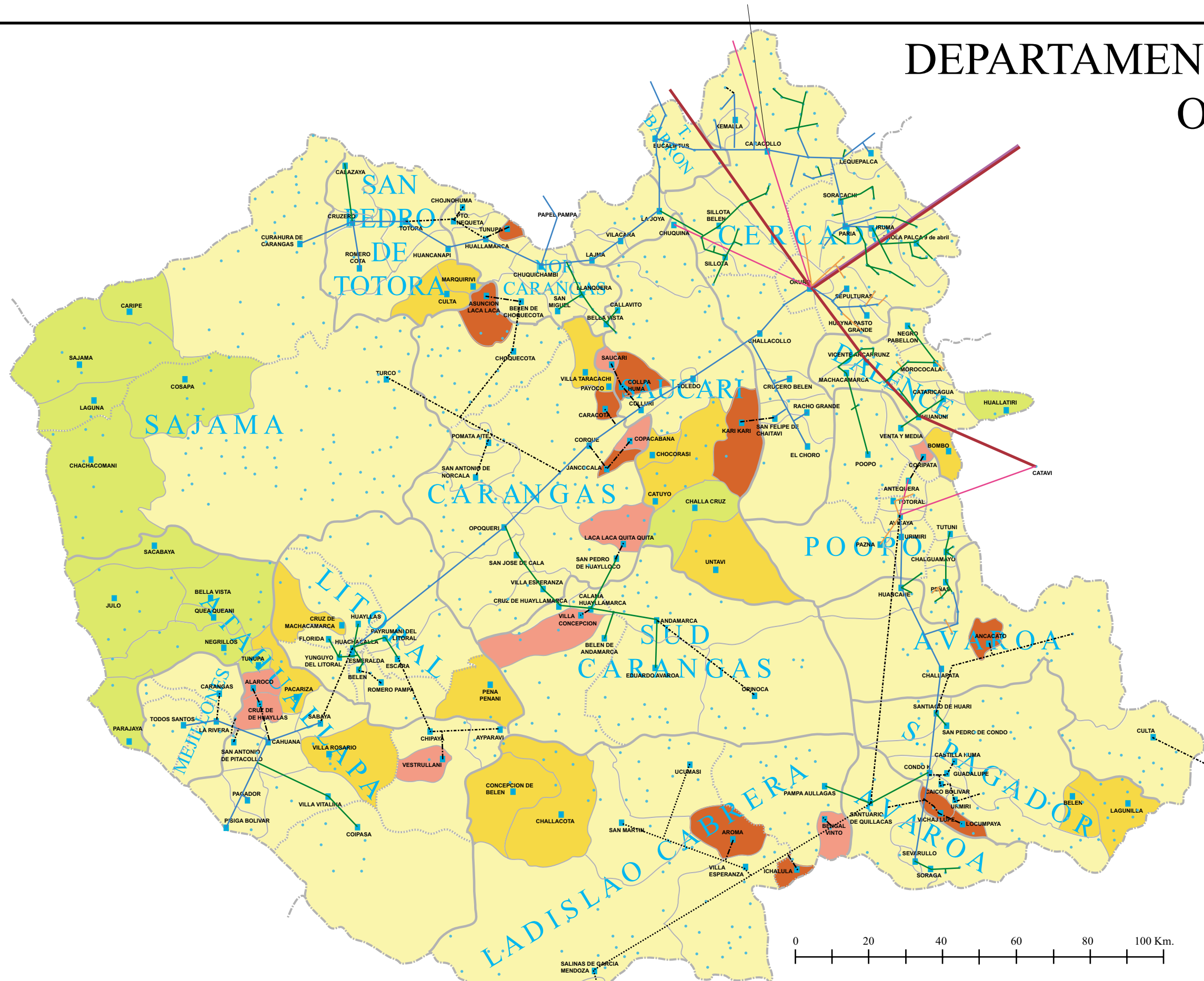
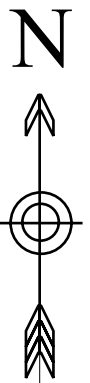
- Grid
- Priority A
- Priority B
- Priority C
- Priority D



THE STUDY ON RURAL ELECTRIFICATION
 IMPLEMENTATION PLAN BY RENEWABLE ENERGY
 IN THE REPUBLIC OF BOLIVIA
 JAPAN INTERNATIONAL COOPERATION AGENCY

Figure 8.9
 Projected Grid Line Extension Plan by 2011 (La Paz)

DEPARTAMENTO DE ORURO



LEGEND

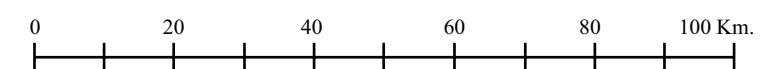
- Department
- Province
- Municipio
- Canton
- Capital of Canton
- Serial of Canton
- Household Without Elec.
- Community

LEGEND of Transmission Line

- T/L 230kV (Exist. 2000)
- T/L 115kV (Exist. 2000)
- T/L 69kv (Exist. 2000)
- T/L 24.9kv (Exist. 2000)
- T/L 14.4 kv. (Exist. 2000)
- T/L 6.6 kv. (Exist. 2000)
- - - T/L Proyecto (2001)
- - - T/L Proyecto (~2006)
- - - T/L Proyecto (~2011)

LEGEND

- Grid
- Priority A
- Priority B
- Priority C
- Priority D



THE STUDY ON RURAL ELECTRIFICATION
IMPLEMENTATION PLAN BY RENEWABLE ENERGY
IN THE REPUBLIC OF BOLIVIA
JAPAN INTERNATIONAL COOPERATION AGENCY

Figure 8.10
Projected Grid Line Extension Plan by 2011(Oruro)

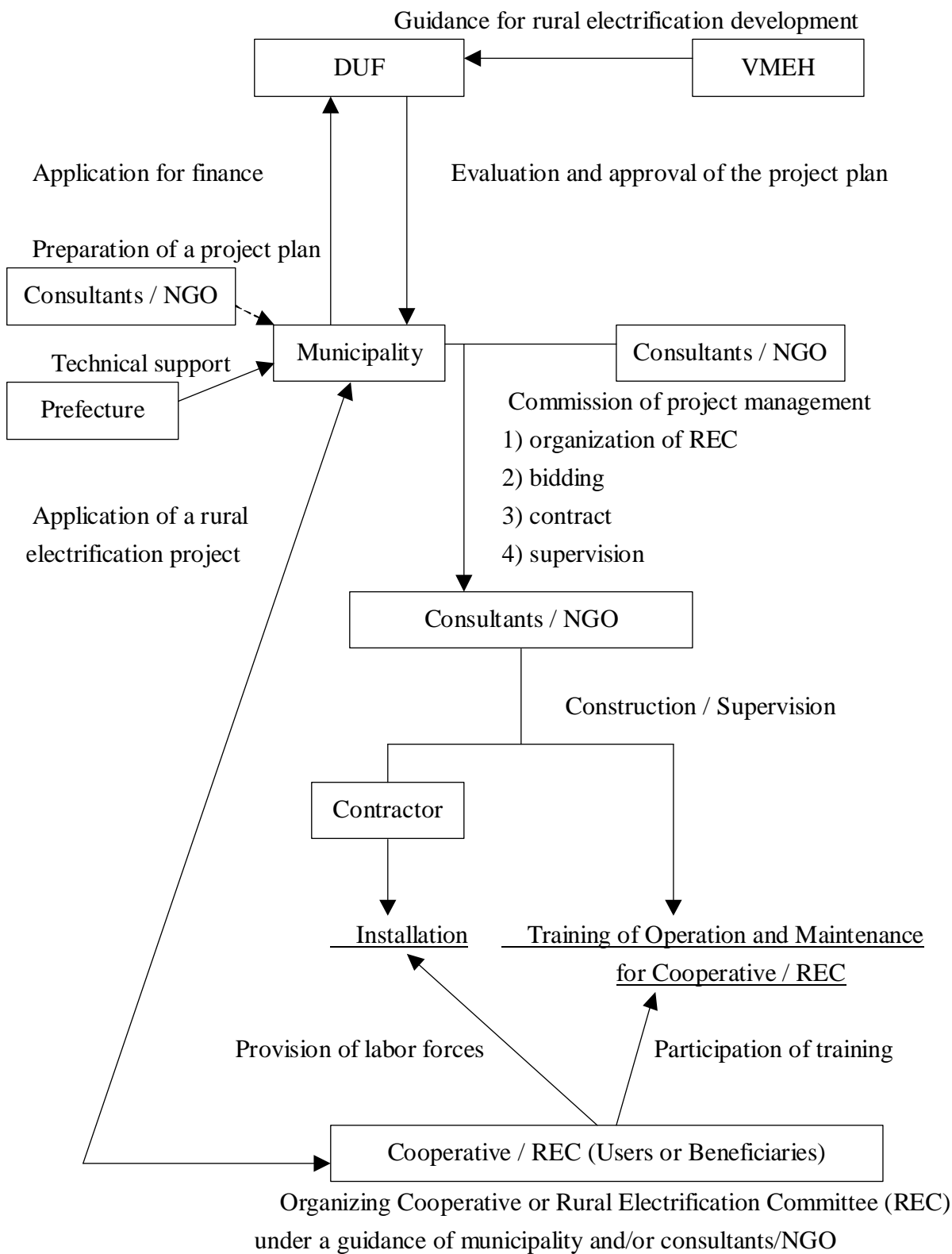
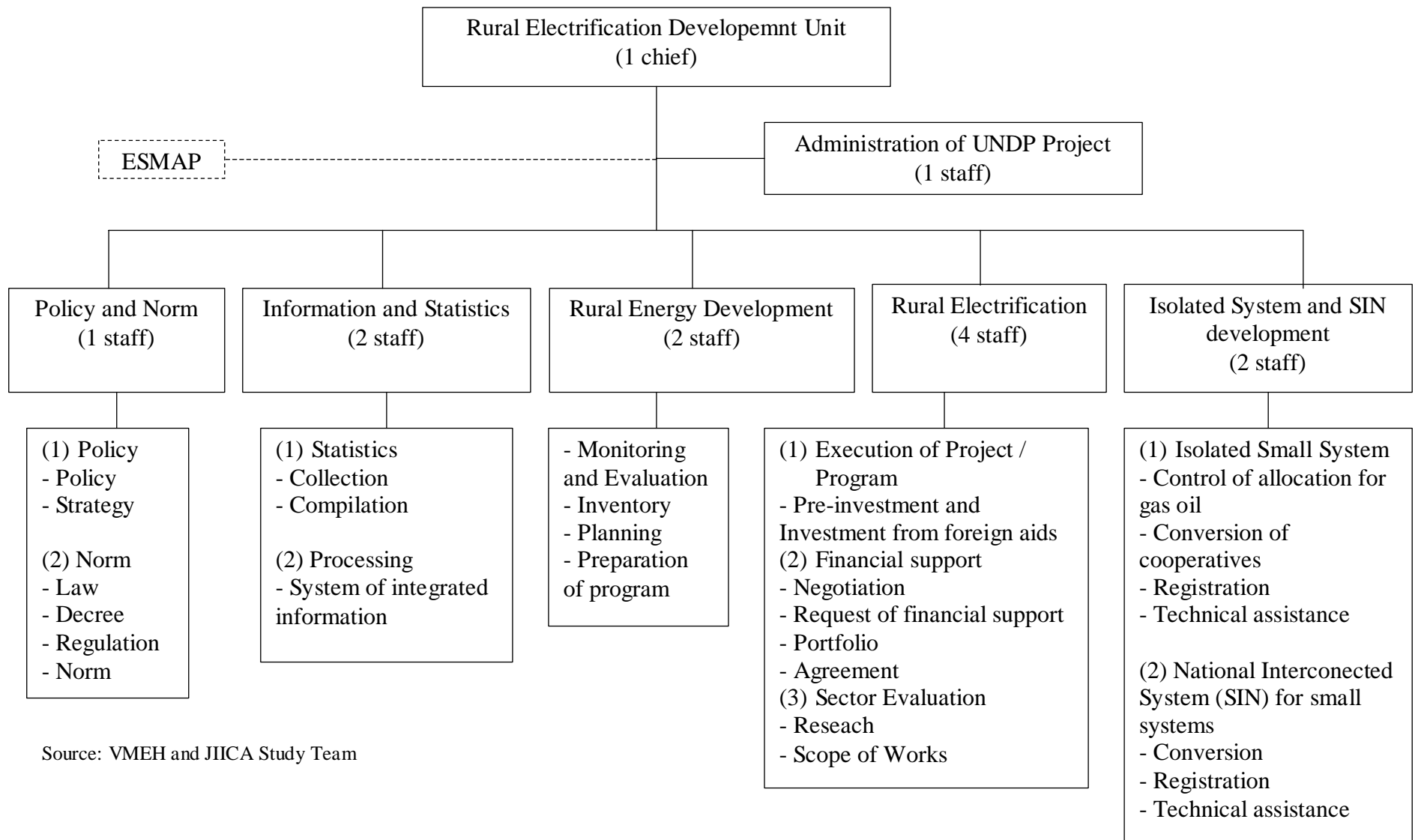


Figure 8.11 Proposed Project Implementation for Renewable Energy Project

Source: JICA Study Team



Source: VMEH and JICA Study Team

Figure 9.1 Proposed Organization Chart of Rural Electrification Development Unit