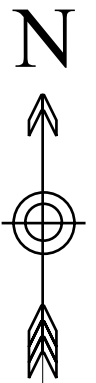
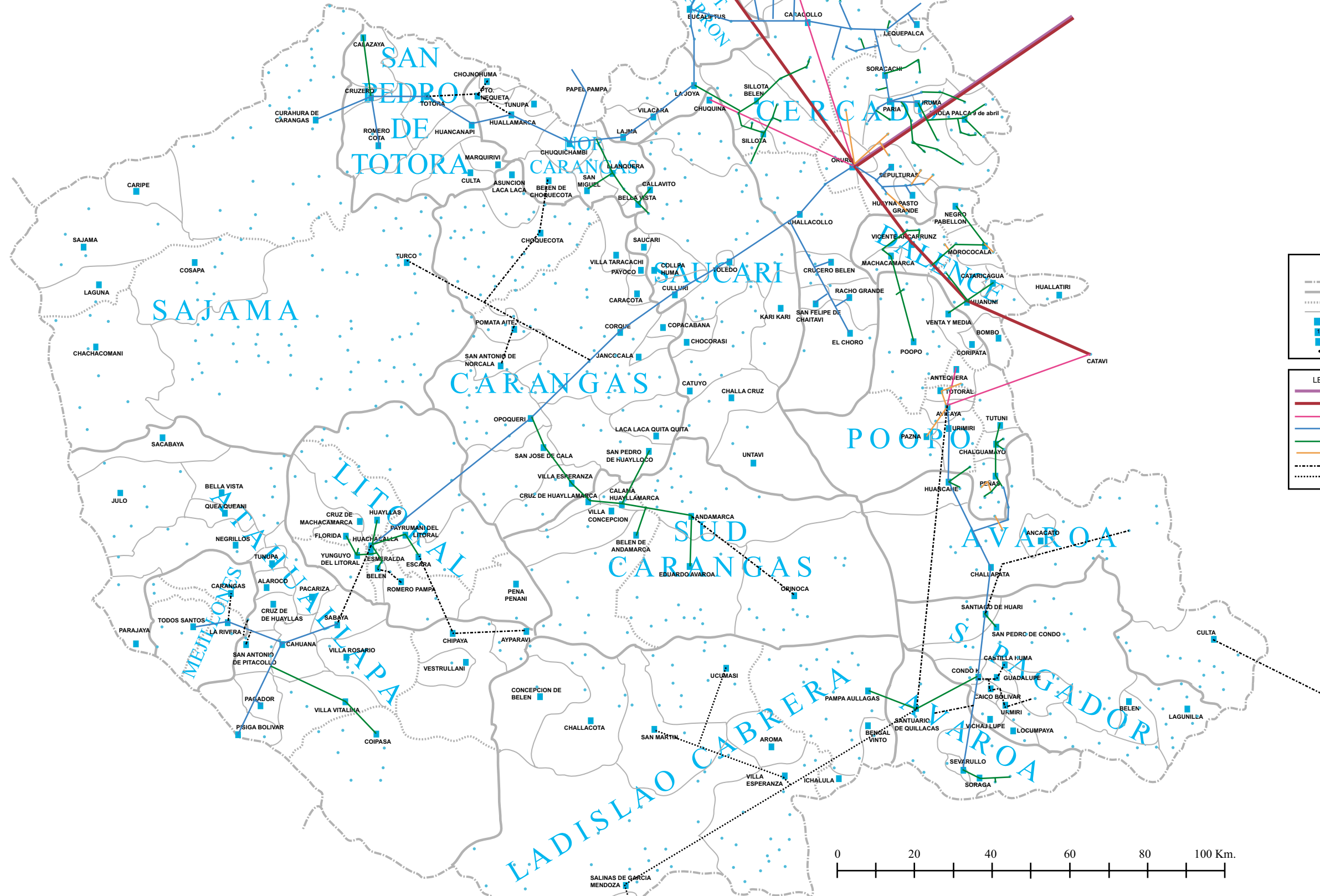




# DEPARTAMENTO DE ORURO

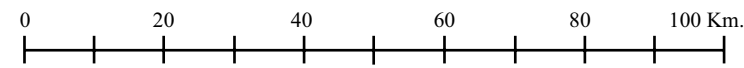


**LEGEND**

- Department
- Province
- ..... Municipio
- Canton
- Capital of Canton
- Serial of Canton
- Household Without Elec.
- Community

**LEGEND of Transmission Line**

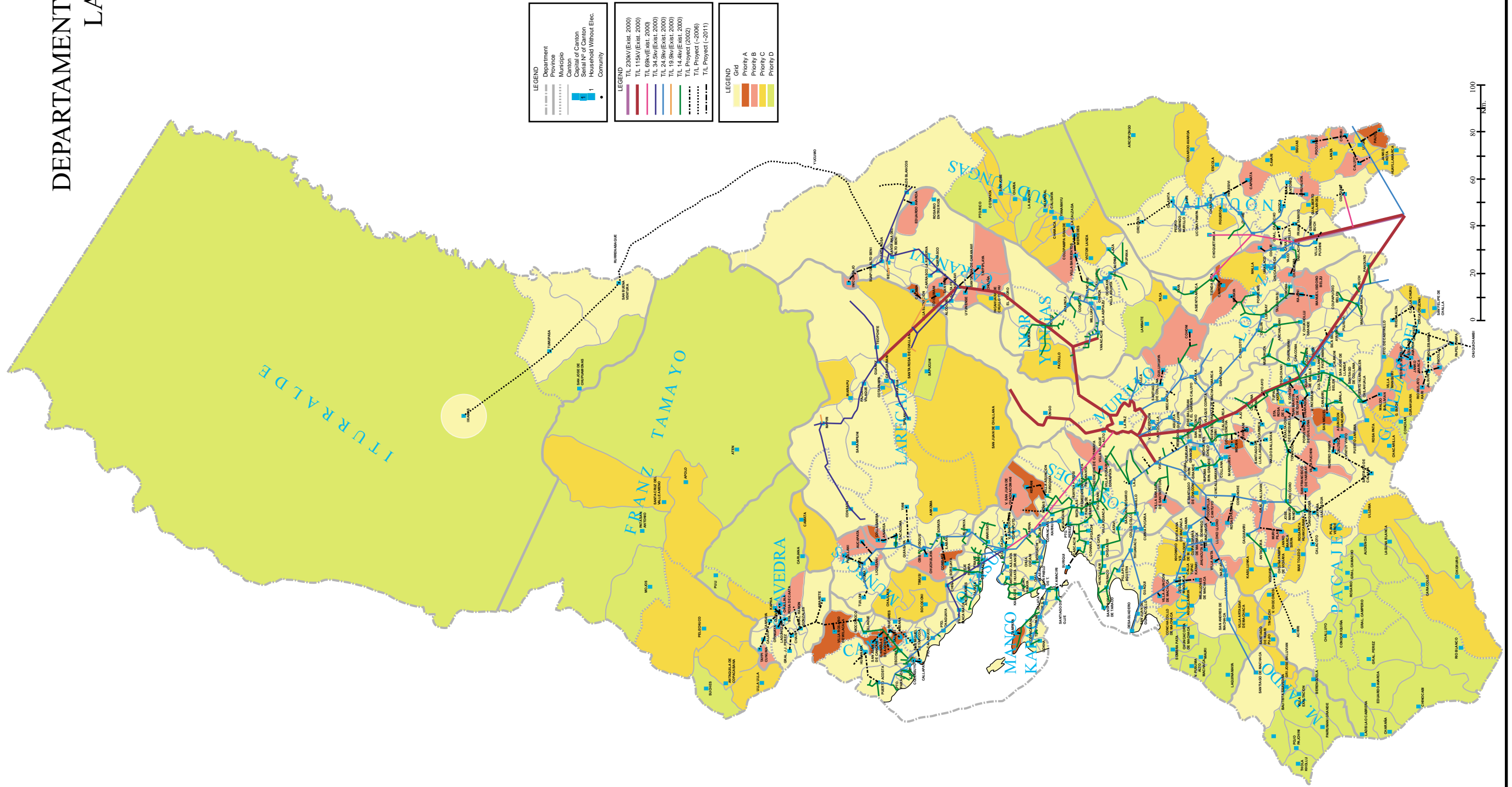
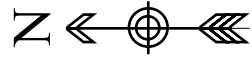
- T/L 230kV (Exist. 2000)
- T/L 115kV (Exist. 2000)
- T/L 69kv (Exist. 2000)
- T/L 24.9kv (Exist. 2000)
- T/L 14.4 kv. (Exist. 2000)
- T/L 6.6 kv. (Exist. 2000)
- T/L Proyecto (2001)
- T/L Proyecto (~2006)



THE STUDY ON RURAL ELECTRIFICATION  
IMPLEMENTATION PLAN BY RENEWABLE ENERGY  
IN THE REPUBLIC OF BOLIVIA  
JAPAN INTERNATIONAL COOPERATION AGENCY

図 8.12  
2006年までのオルロ県送配電網拡張計画予測図

DEPARTAMENTO DE  
LA PAZ



LEGEND

Department	Province	Municipio	Capital of Canton	Specialty of Canton	Households Without Elec.	Community
(thick solid line)	(dashed line)	(thin solid line)	(square with dot)	(square)	(circle with dot)	(circle)

LEGEND

T/L 29kV (Est. 2000)	T/L 115kV (Est. 2000)	T/L 69kV (Est. 2009)	T/L 34.5kV (Est. 2000)	T/L 24.9kV (Est. 2000)	T/L 14.4kV (Est. 2000)	T/L Project (2002)	T/L Project (-2006)	T/L Project (-2011)
(red line)	(orange line)	(yellow line)	(light green line)	(green line)	(dark green line)	(blue line)	(purple line)	(black line)

LEGEND

Grid	Priority A	Priority B	Priority C	Priority D
(yellow)	(orange)	(light green)	(green)	(dark green)

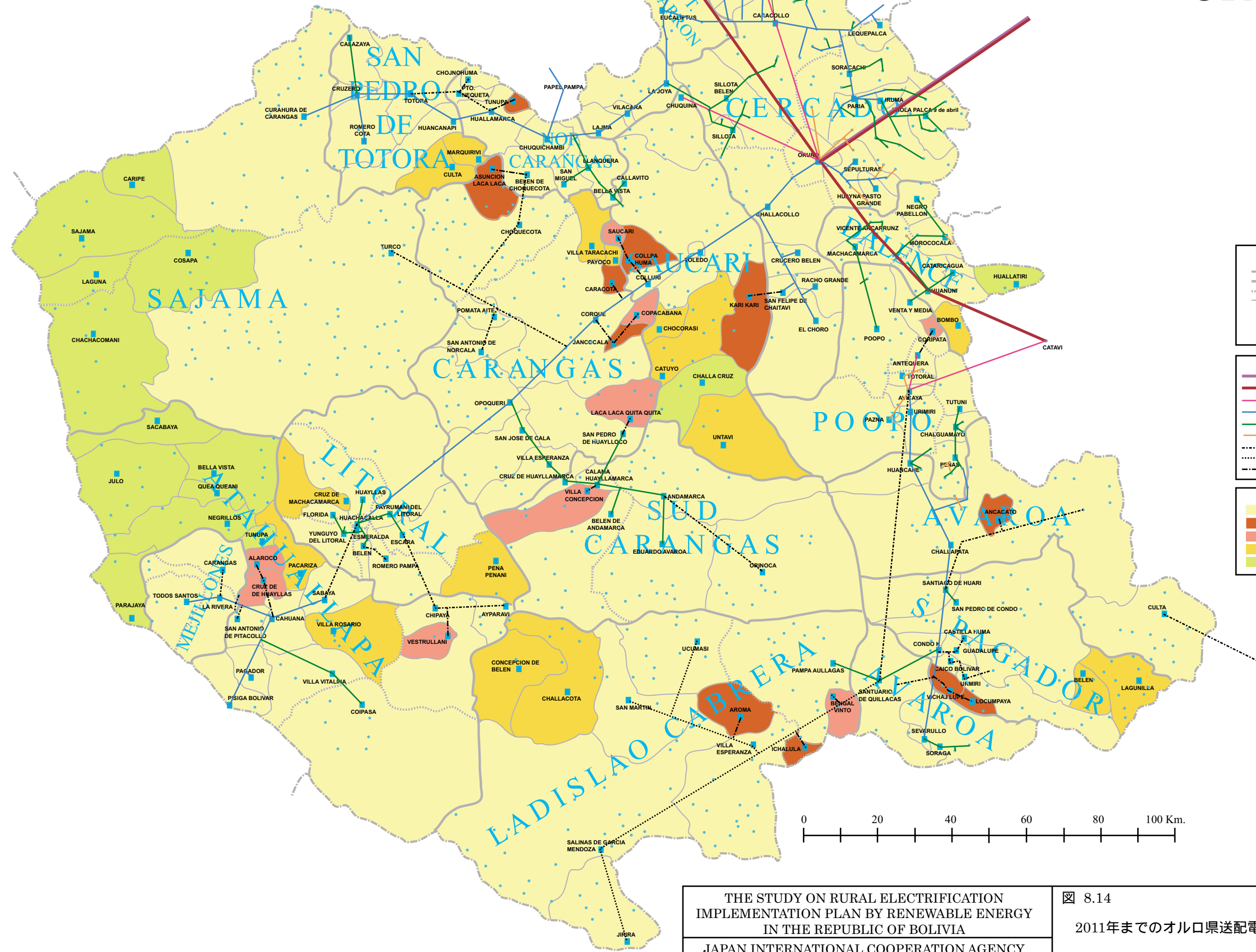
THE STUDY ON RURAL ELECTRIFICATION  
IMPLEMENTATION PLAN BY RENEWABLE ENERGY  
IN THE REPUBLIC OF BOLIVIA  
JAPAN INTERNATIONAL COOPERATION AGENCY

図 8.13

2011年までのラパス県送配電網拡張計画予測図



# DEPARTAMENTO DE ORURO



**LEGEND**

- Department
- Province
- ..... Municipio
- ..... Canton
- Capital of Canton
- Serial of Canton
- Household Without Elec.
- Community

**LEGEND of Transmission Line**

- T/L 230kV (Exist. 2000)
- T/L 115kV (Exist. 2000)
- T/L 69kv (Exist. 2000)
- T/L 24.9kv (Exist. 2000)
- T/L 14.4 kv. (Exist. 2000)
- T/L 6.6 kv. (Exist. 2000)
- ..... T/L Proyecto (2001)
- ..... T/L Proyecto (~2006)
- ..... T/L Proyecto (~2011)

**LEGEND**

- Grid
- Priority A
- Priority B
- Priority C
- Priority D

THE STUDY ON RURAL ELECTRIFICATION  
IMPLEMENTATION PLAN BY RENEWABLE ENERGY  
IN THE REPUBLIC OF BOLIVIA  
JAPAN INTERNATIONAL COOPERATION AGENCY

図 8.14  
2011年までのオルロ県送配電網拡張計画予測図

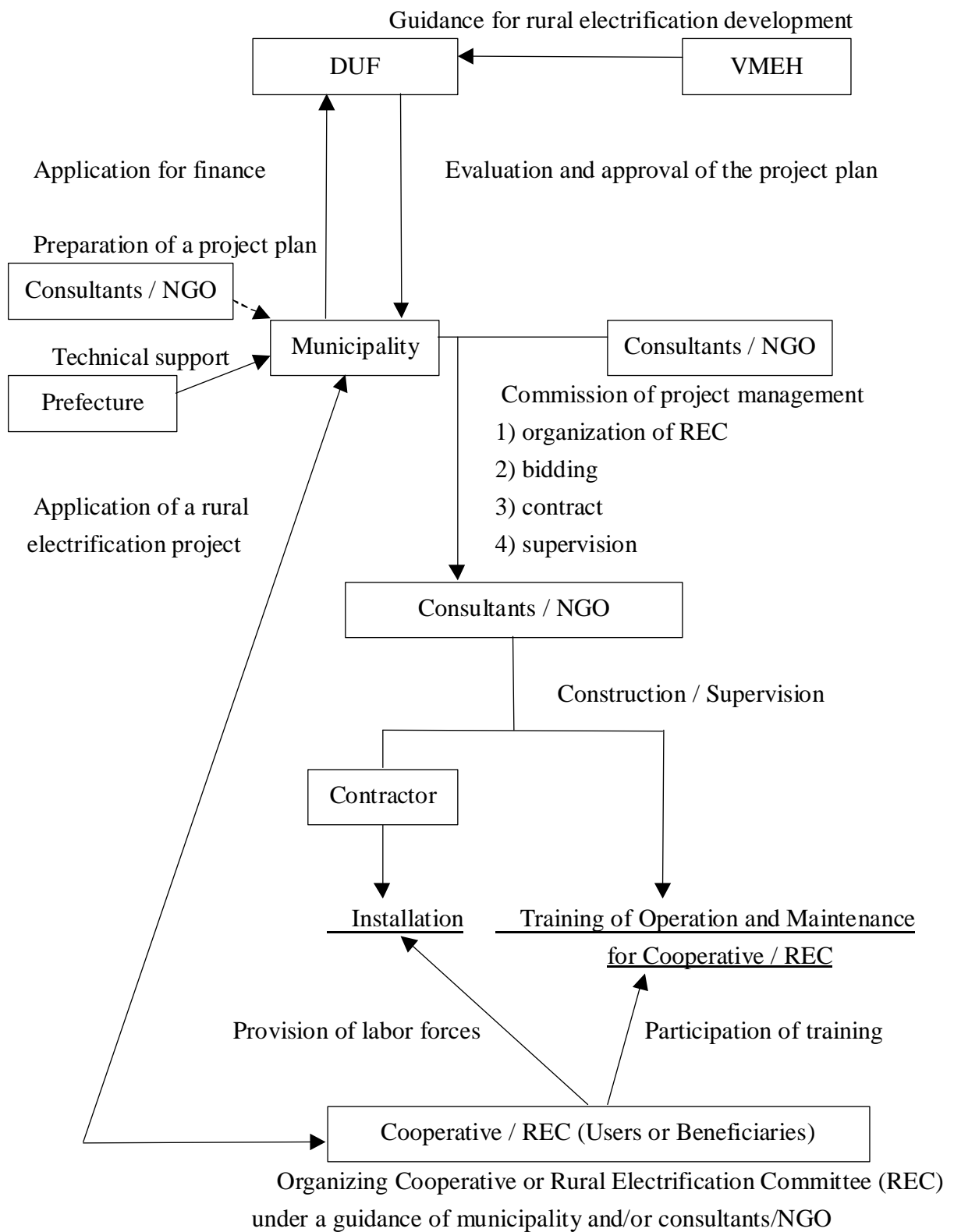
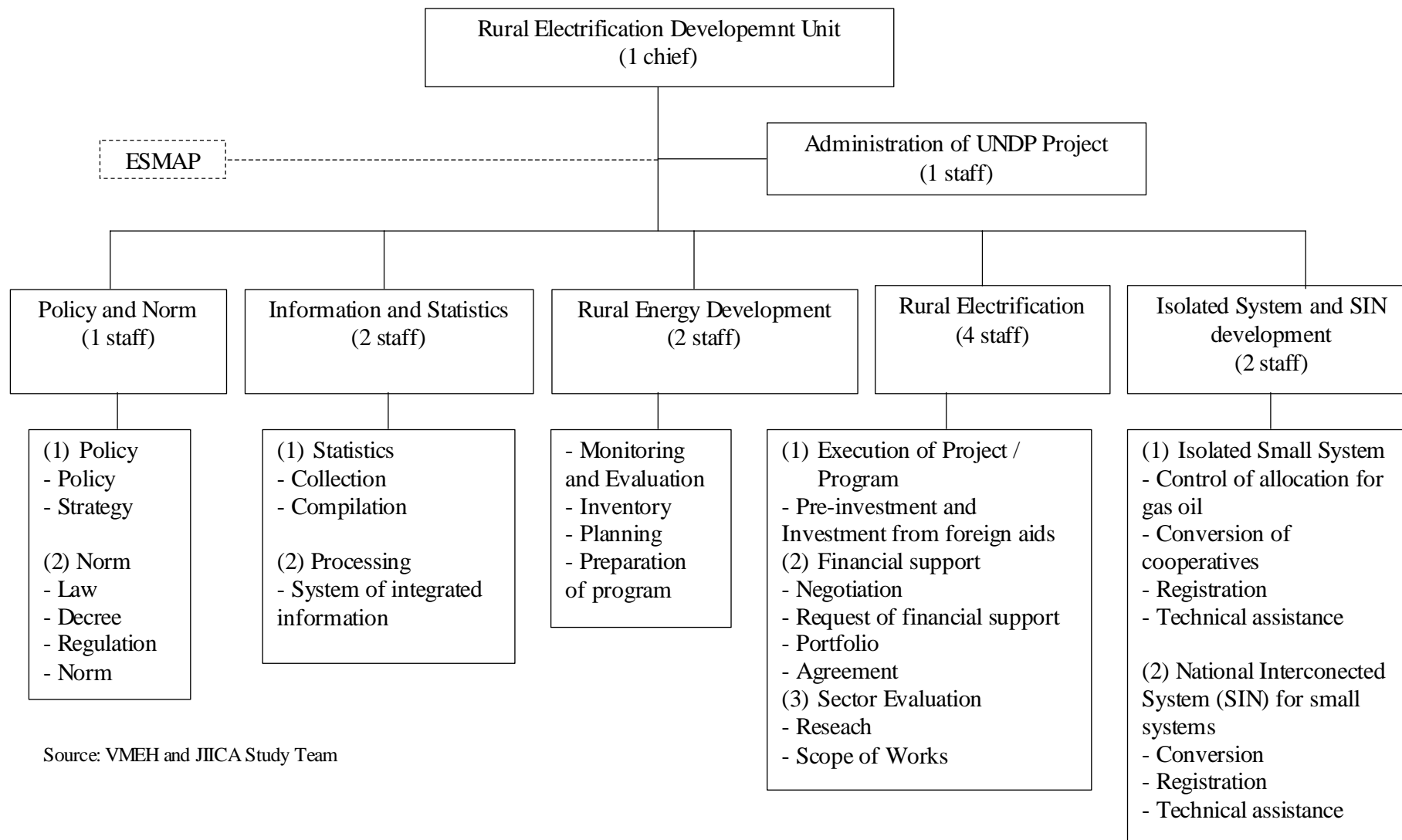


図 8.15 再生可能エネルギー開発のための事業実施構造



Source: VMEH and JICA Study Team

図 9.1 地方電化開発部（現エネルギー開発部）組織図案

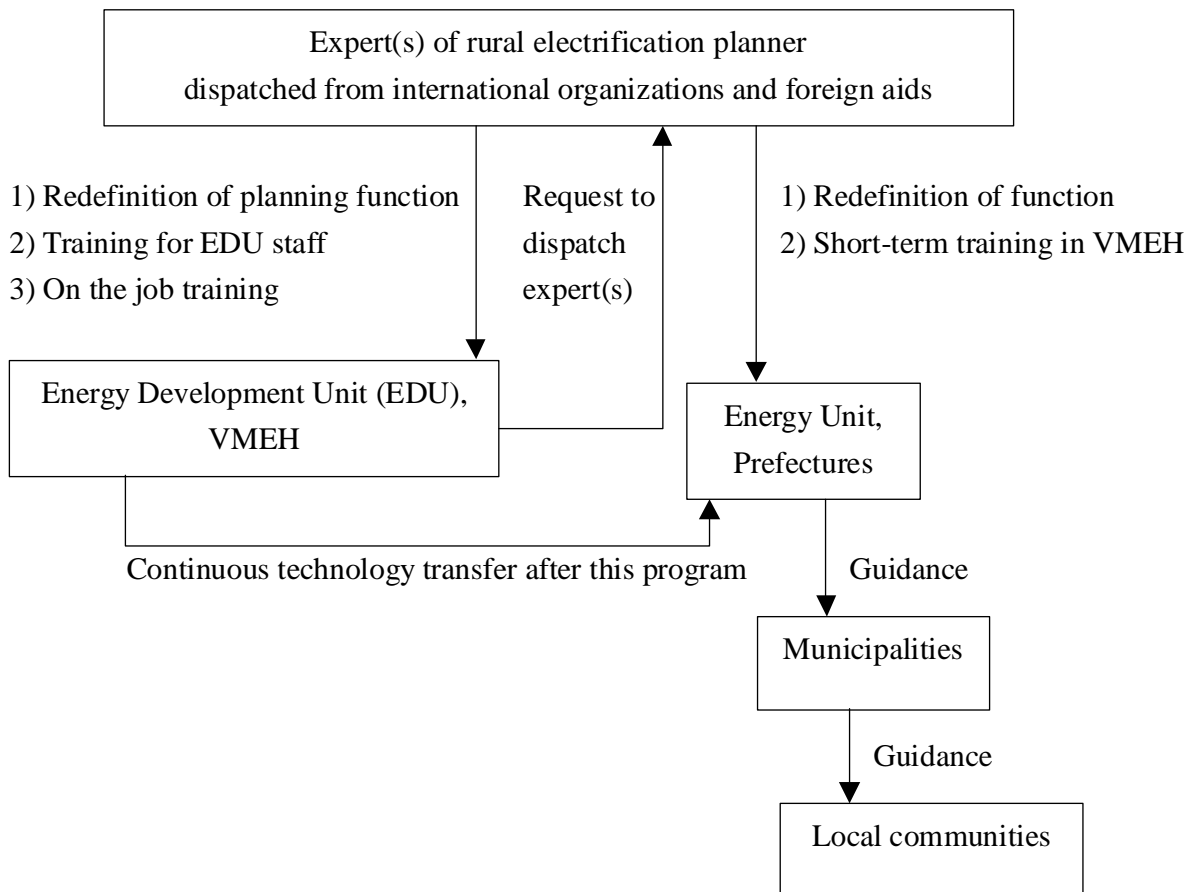


図 9.2 エネルギー開発部職員強化実施図

Source: JICA Study Team

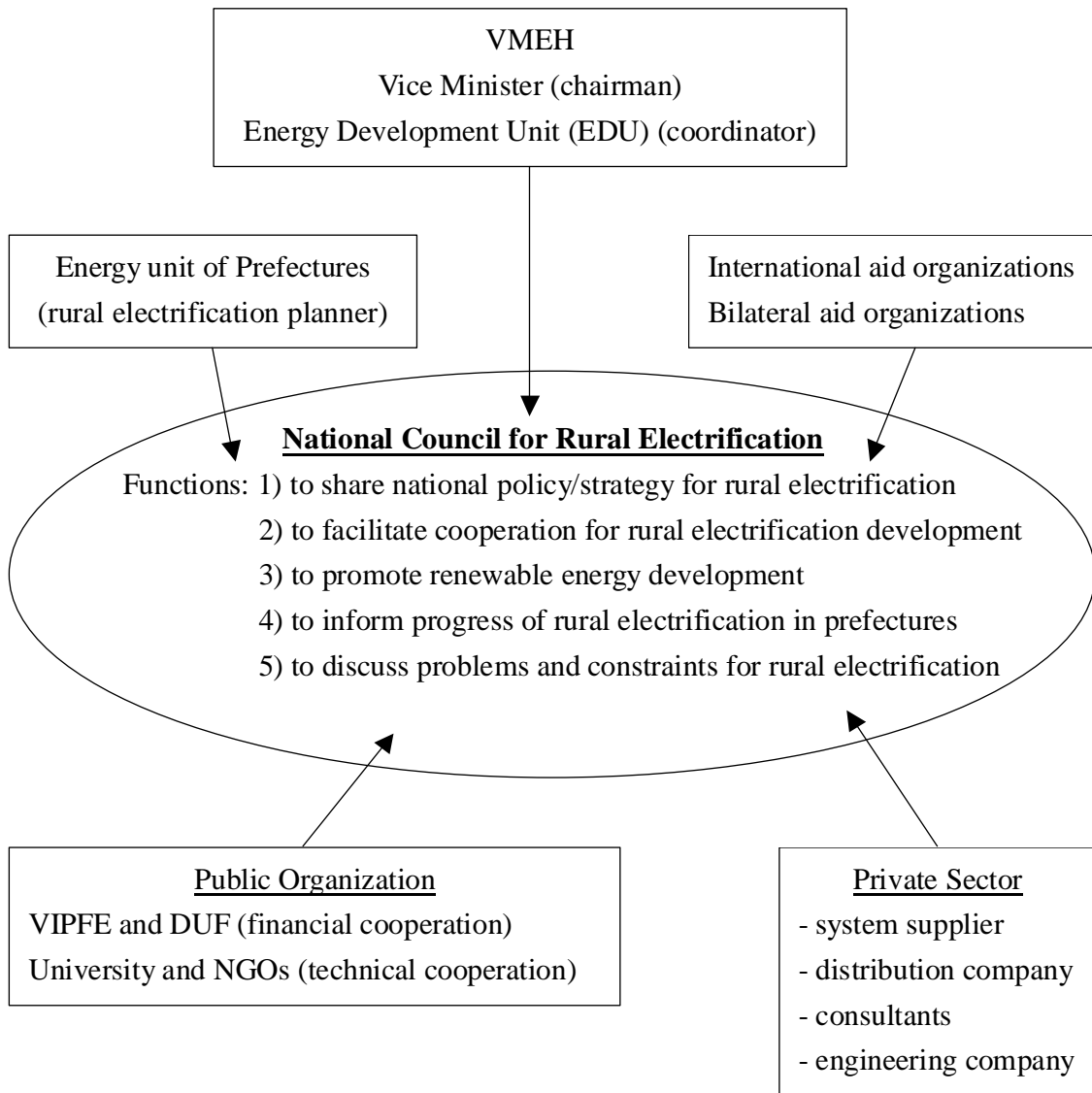


图 9.3 地方電化国家審議会設立案

Source: JICA Study Team



- (1) to inform national policy and strategy for rural electrification
- (2) to assist technology for rural electrification development
- (3) to coordinate for financial arrangement

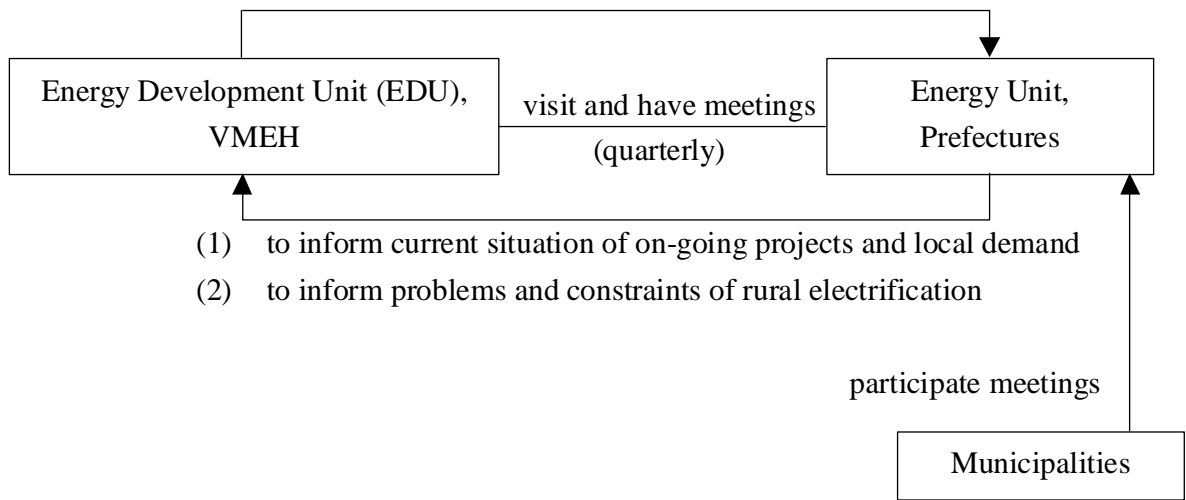


図 9.4 エネルギー・炭化水素庁職員による地方自治体との定例会議案

Source: JICA Study Team