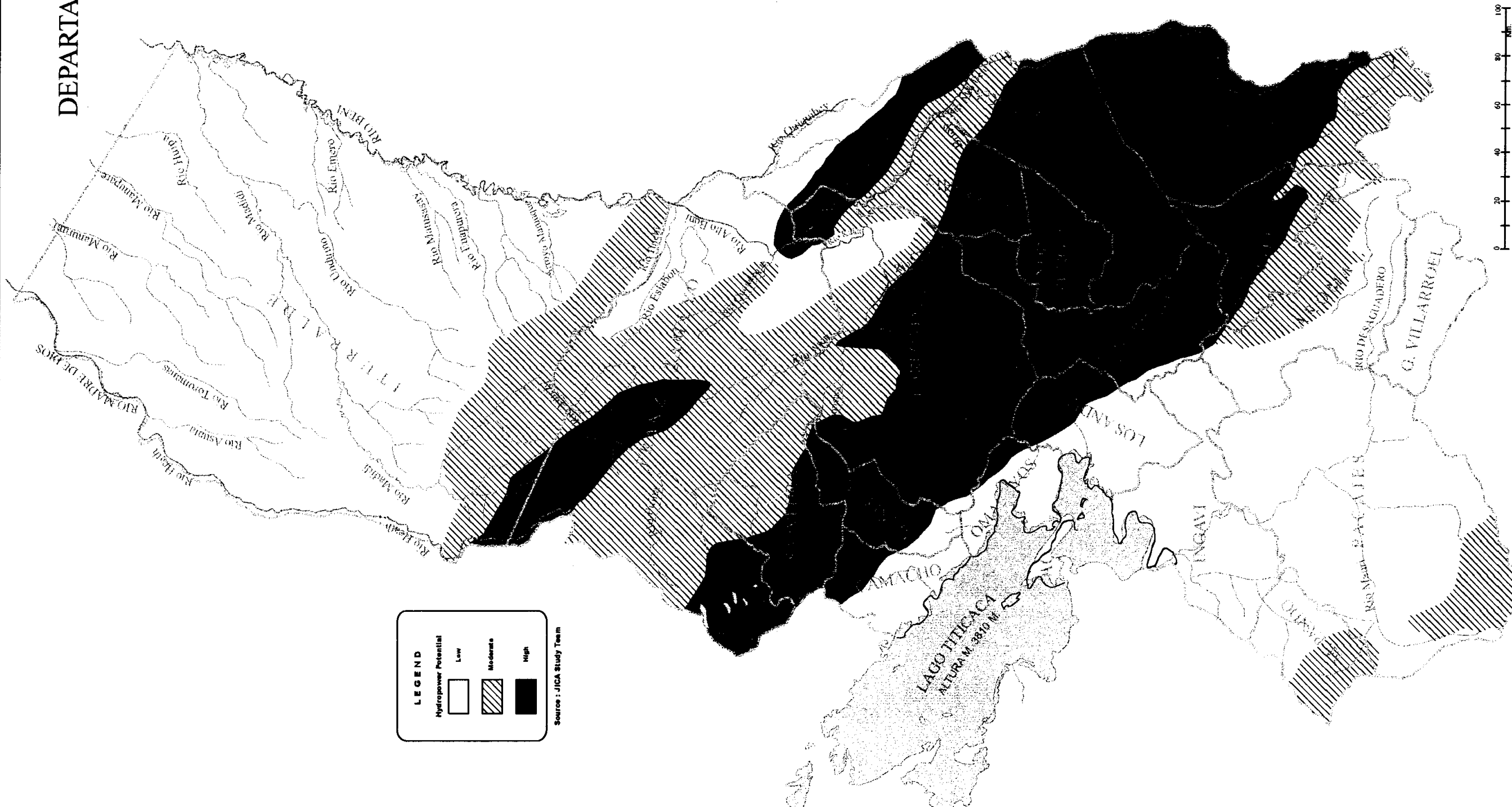


DEPARTAMENTO DE  
LA PAZ



**LEGEND**

Hydropower Potential

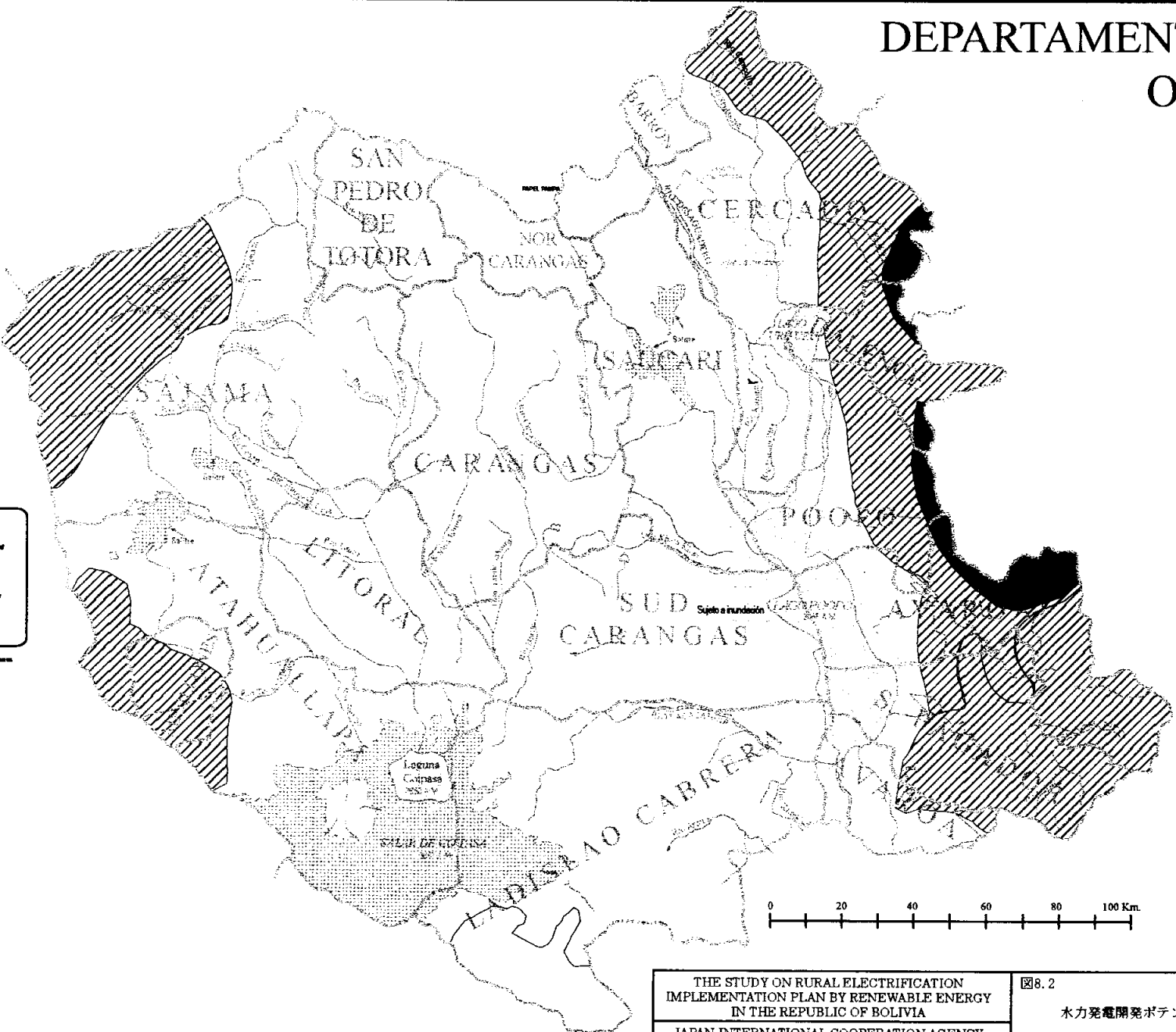
Low	Moderate	High

Source: JICA Study Team

THE STUDY ON RURAL ELECTRIFICATION  
IMPLEMENTATION PLAN BY RENEWABLE ENERGY  
IN THE REPUBLIC OF BOLIVIA  
JAPAN INTERNATIONAL COOPERATION AGENCY

図 8.1  
水力発電開発ポテンシャル図 (ラパス県)

# DEPARTAMENTO DE ORURO



**LEGEND**

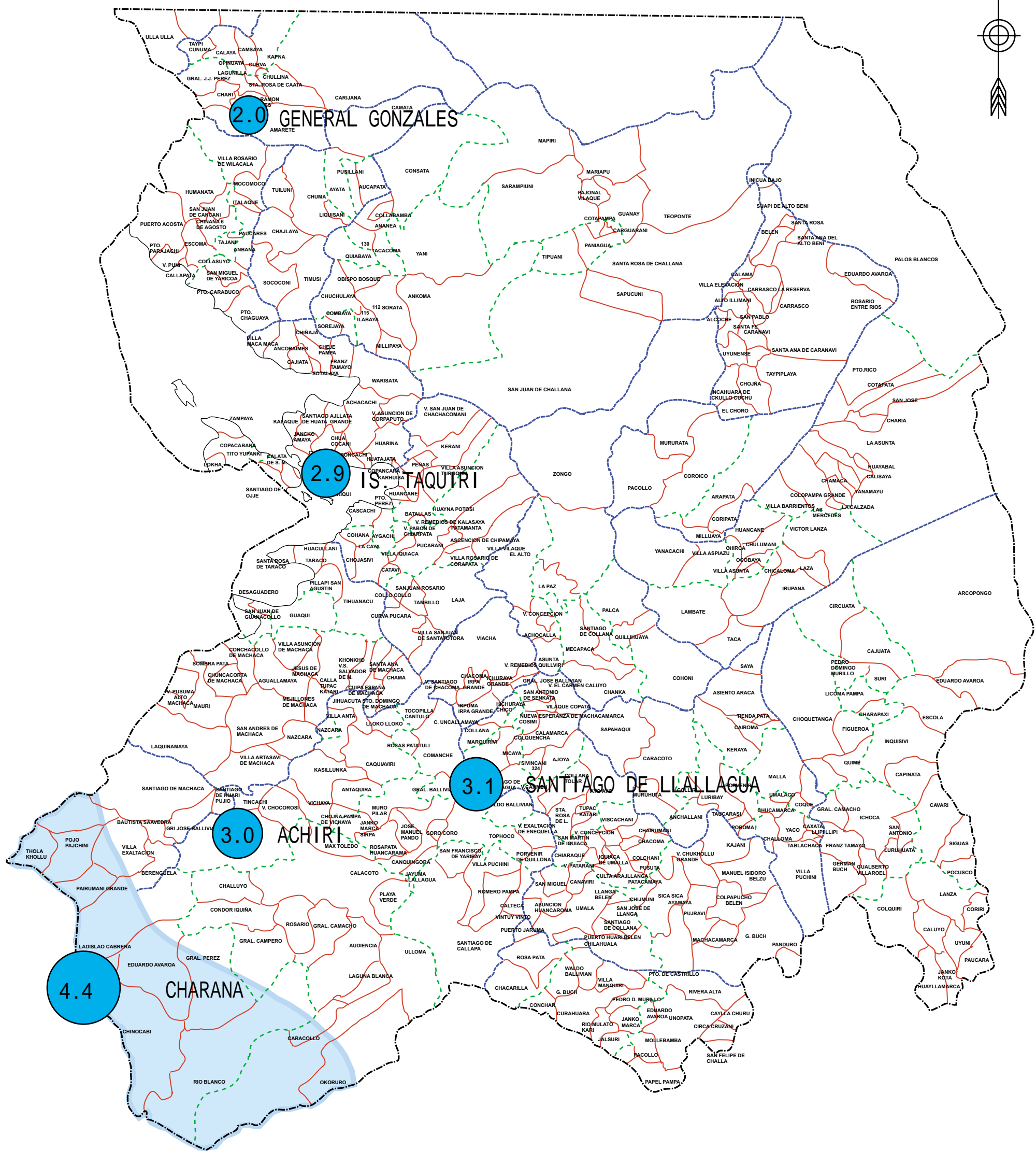
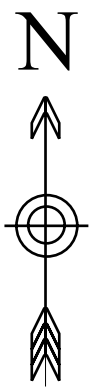
Hydroelectric Potential

- Low
- Medium
- High

Source : JICA Study Team

THE STUDY ON RURAL ELECTRIFICATION  
IMPLEMENTATION PLAN BY RENEWABLE ENERGY  
IN THE REPUBLIC OF BOLIVIA  
JAPAN INTERNATIONAL COOPERATION AGENCY

図8.2  
水力発電開発ポテンシャル図（オルロ県）



LEGEND

4.5 Annual Average Wind Speed (m/s)  
20 meters above ground level

> 4.0 m/s (High Potential Area)

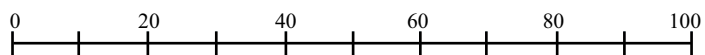
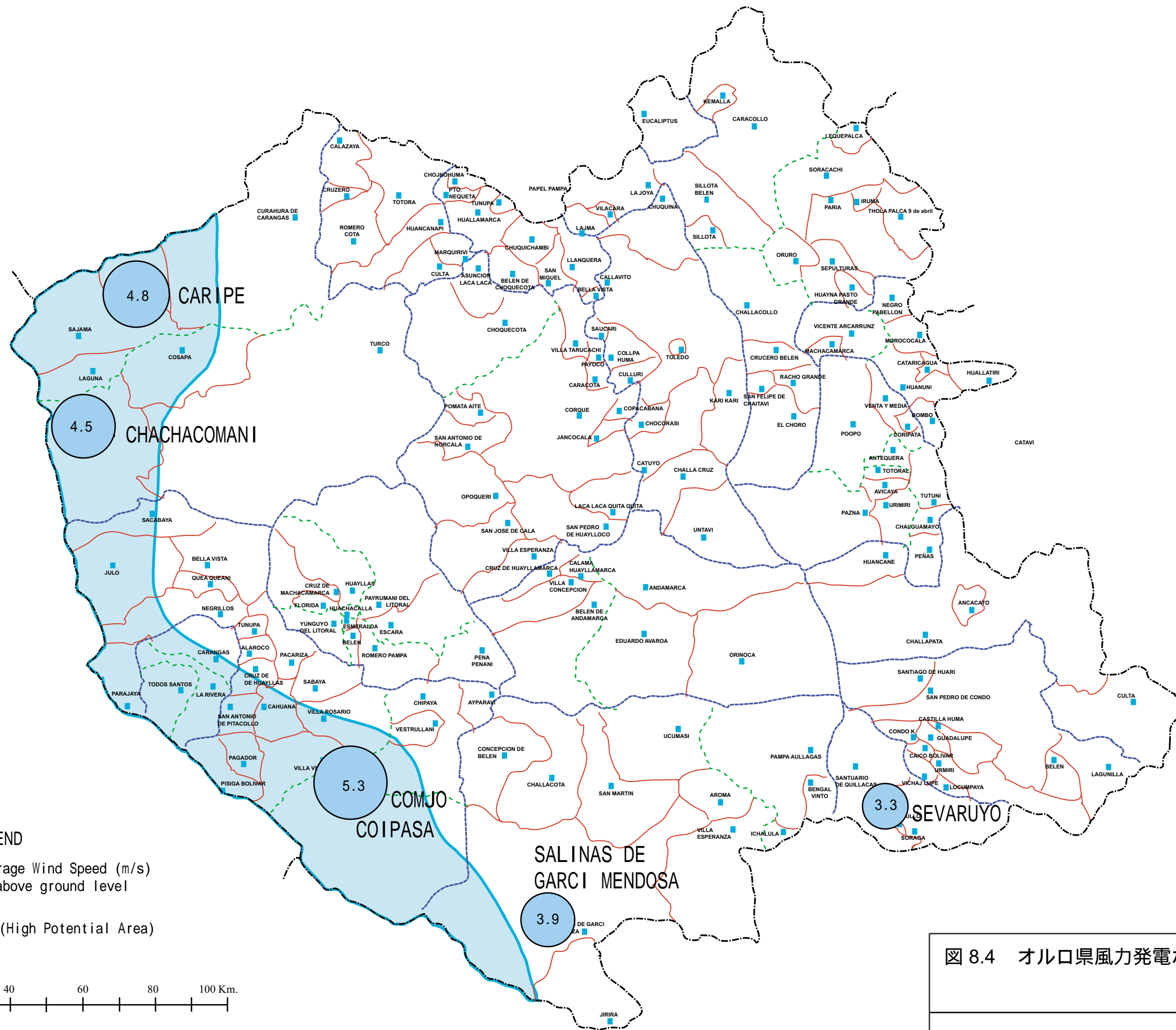
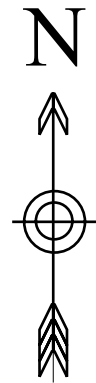


図 8.3 ラパス県風力発電ポテンシャル地図



LEGEND

- 4.5 Annual Average Wind Speed (m/s)  
20 meters above ground level
- > 4.0 m/s (High Potential Area)

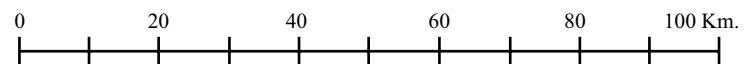
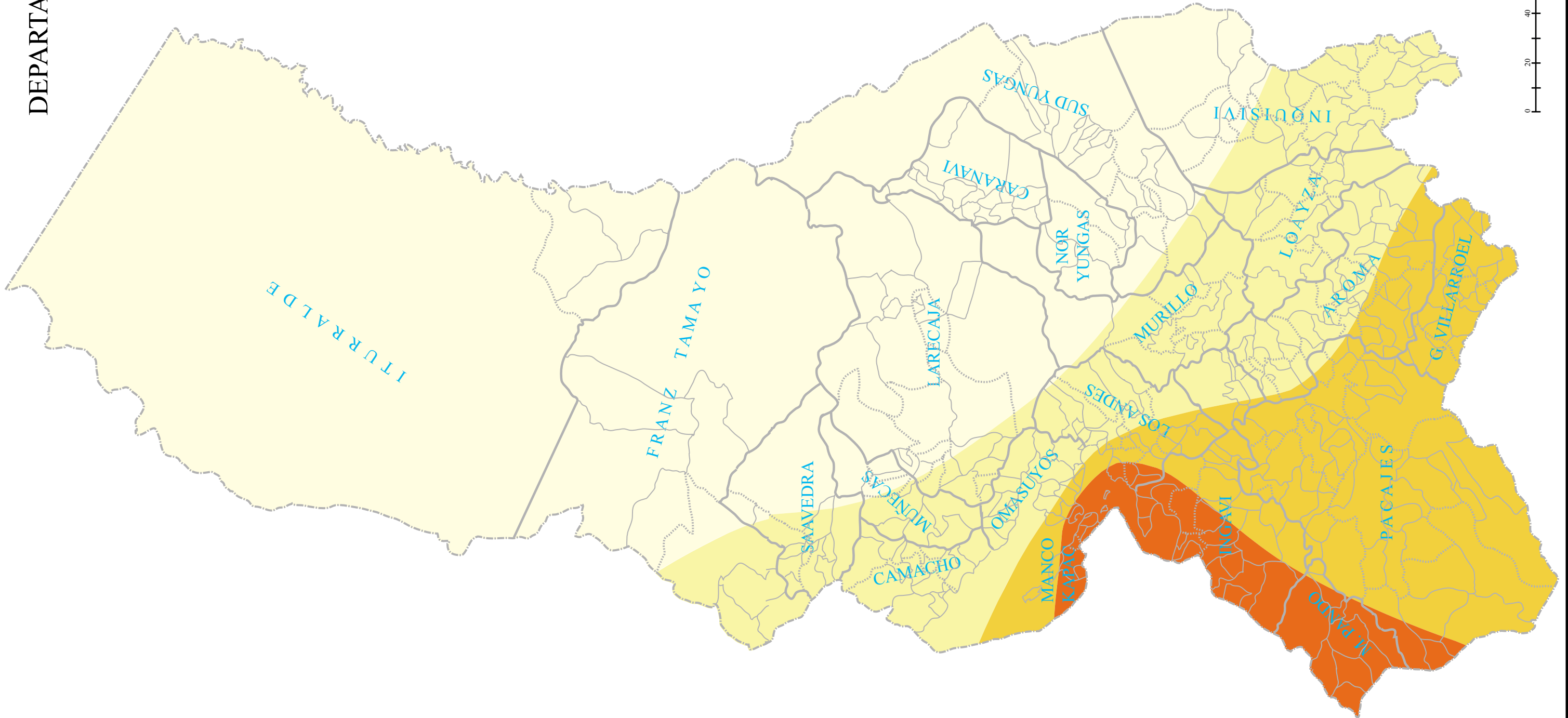
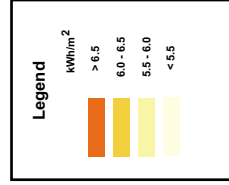
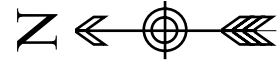
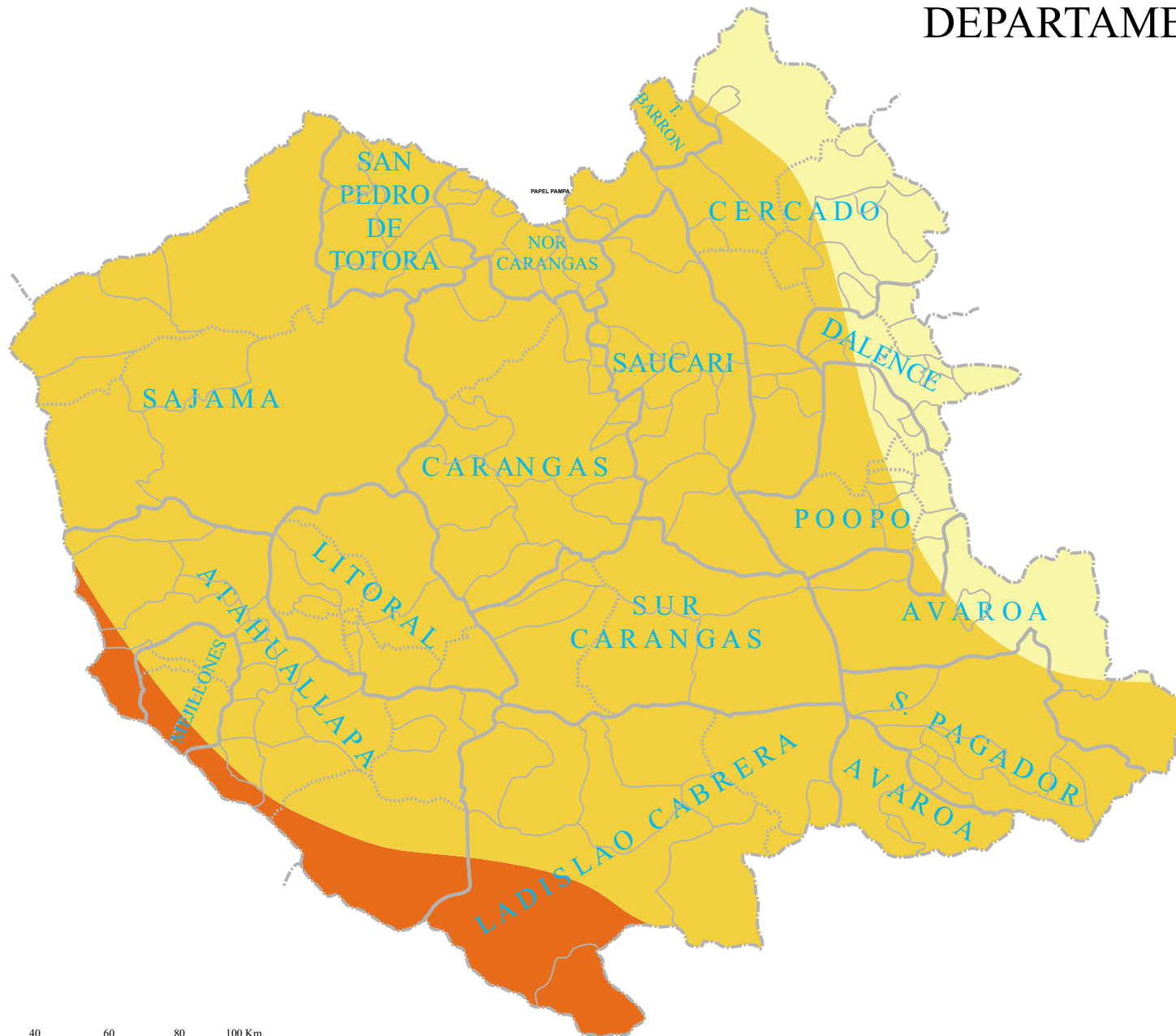


図 8.4 オルロ県風力発電ポテンシャル地図

DEPARTAMENTO DE  
LA PAZ

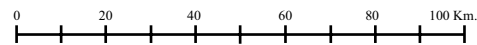


# DEPARTAMENTO DE ORURO



N

Legend	
kWh/m <sup>2</sup>	
<span style="display:inline-block; width:15px; height:10px; background-color:darkorange;"></span>	> 6.5
<span style="display:inline-block; width:15px; height:10px; background-color:orange;"></span>	6.0 - 6.5
<span style="display:inline-block; width:15px; height:10px; background-color:lightorange;"></span>	5.5 - 6.0
<span style="display:inline-block; width:15px; height:10px; background-color:paleyellow;"></span>	< 5.5

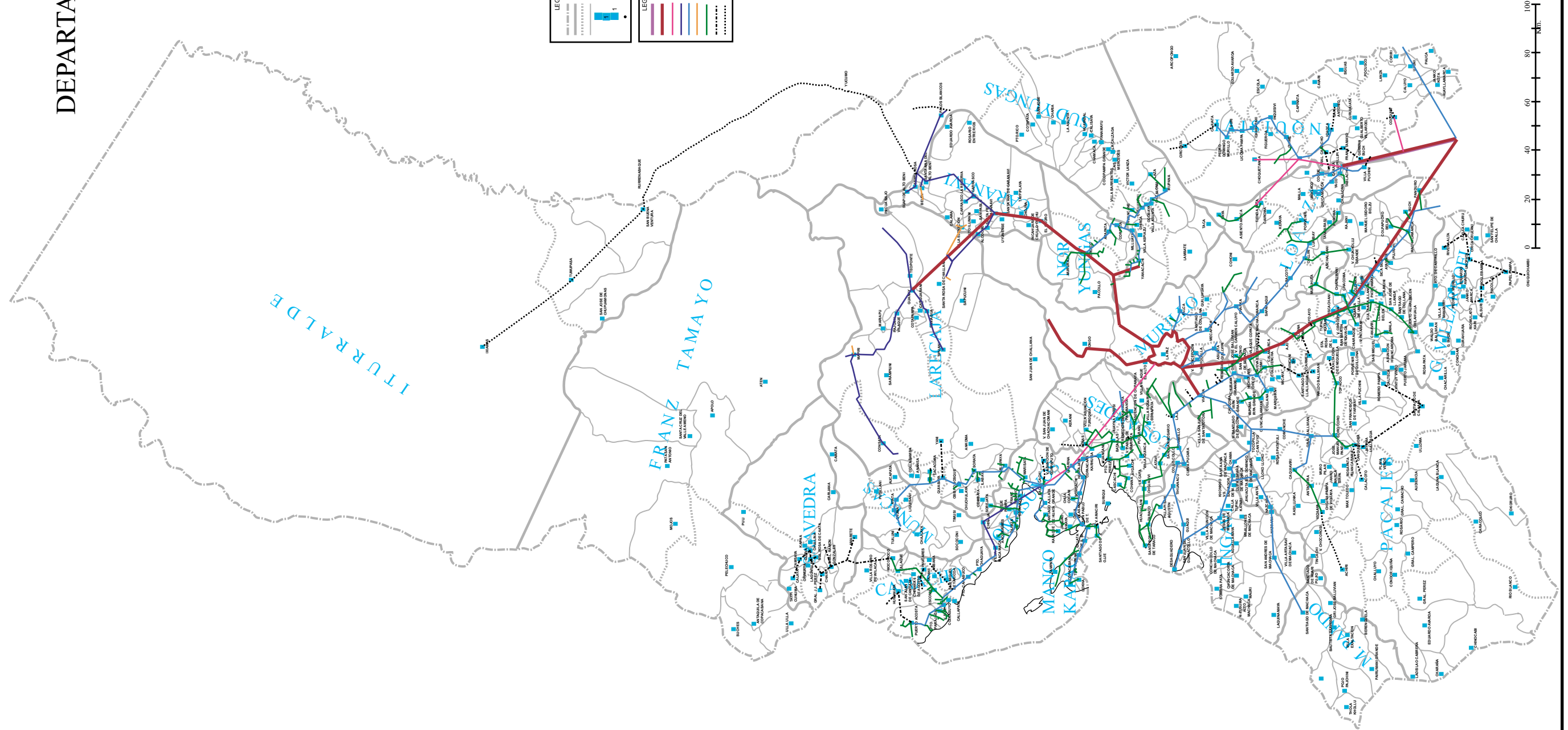
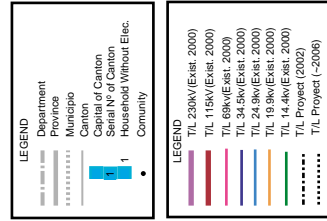
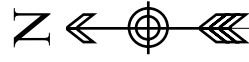


THE STUDY ON RURAL ELECTRIFICATION  
 IMPLEMENTATION PLAN BY RENEWABLE ENERGY  
 IN THE REPUBLIC OF BOLIVIA  
 JAPAN INTERNATIONAL COOPERATION AGENCY

図 8.6

オルロ県太陽光発電ポテンシャル地図  
 (2002-2006, 2007-2011)

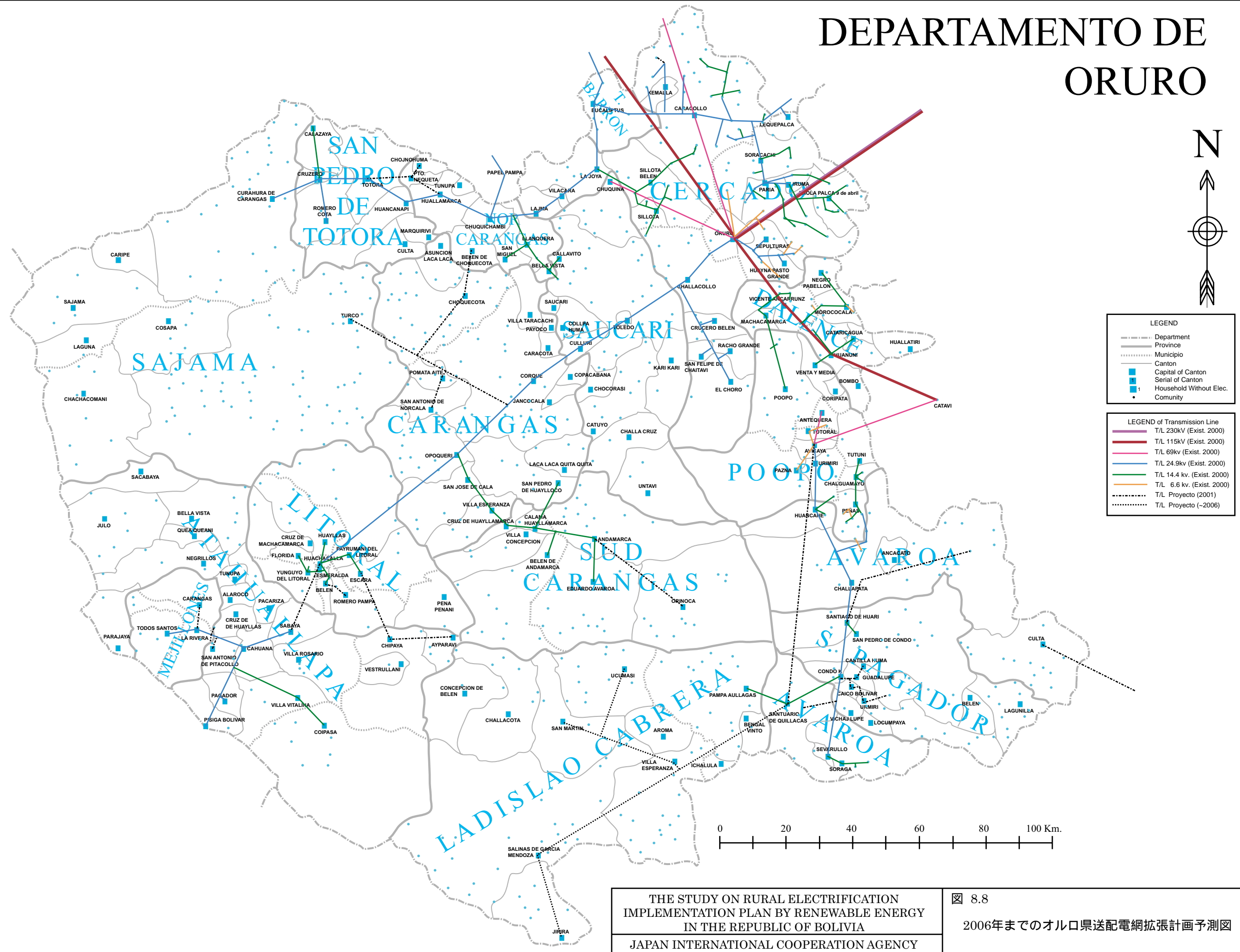
# DEPARTAMENTO DE LA PAZ



THE STUDY ON RURAL ELECTRIFICATION  
IMPLEMENTATION PLAN BY RENEWABLE ENERGY  
IN THE REPUBLIC OF BOLIVIA  
JAPAN INTERNATIONAL COOPERATION AGENCY

図 8.7  
2006年までのラパス県送配電網拡張計画予測図

# DEPARTAMENTO DE ORURO

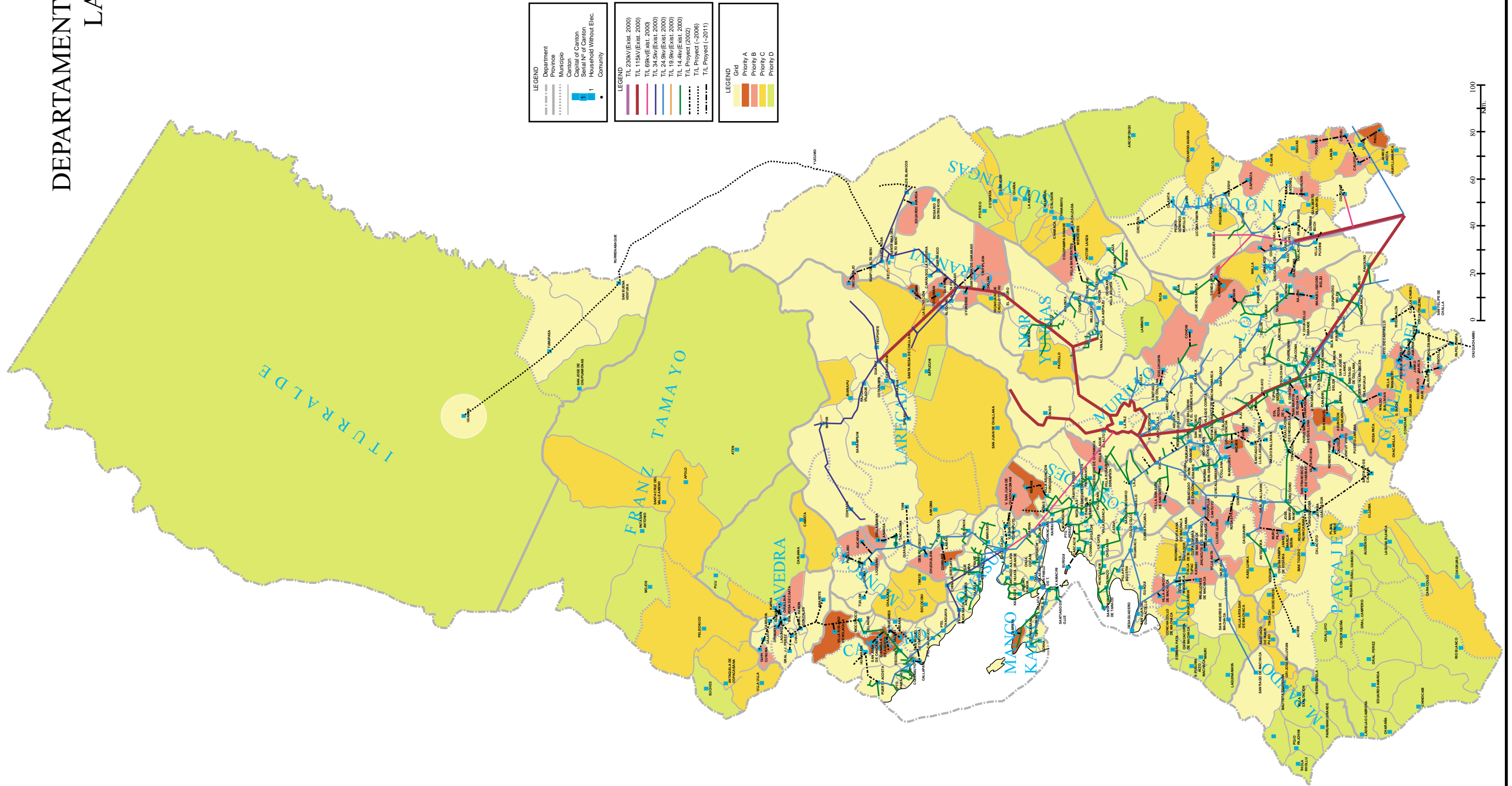
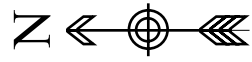


THE STUDY ON RURAL ELECTRIFICATION  
 IMPLEMENTATION PLAN BY RENEWABLE ENERGY  
 IN THE REPUBLIC OF BOLIVIA  
 JAPAN INTERNATIONAL COOPERATION AGENCY

図 8.8  
 2006年までのオルロ県送配電網拡張計画予測図



# DEPARTAMENTO DE LA PAZ



<b>LEGEND</b>	Department
	Province
	Municipio
	Capital
	Seat of Canton
	Seat of Province
	Households Without Elec.
	Community

<b>LEGEND</b>	T/L 29kV (Est. 2000)
	T/L 115kV (Est. 2000)
	T/L 69kV (Est. 2009)
	T/L 34.5kV (Est. 2000)
	T/L 24.9kV (Est. 2000)
	T/L 14.4kV (Est. 2000)
	T/L Project (2002)
	T/L Project (-2006)
	T/L Project (-2011)

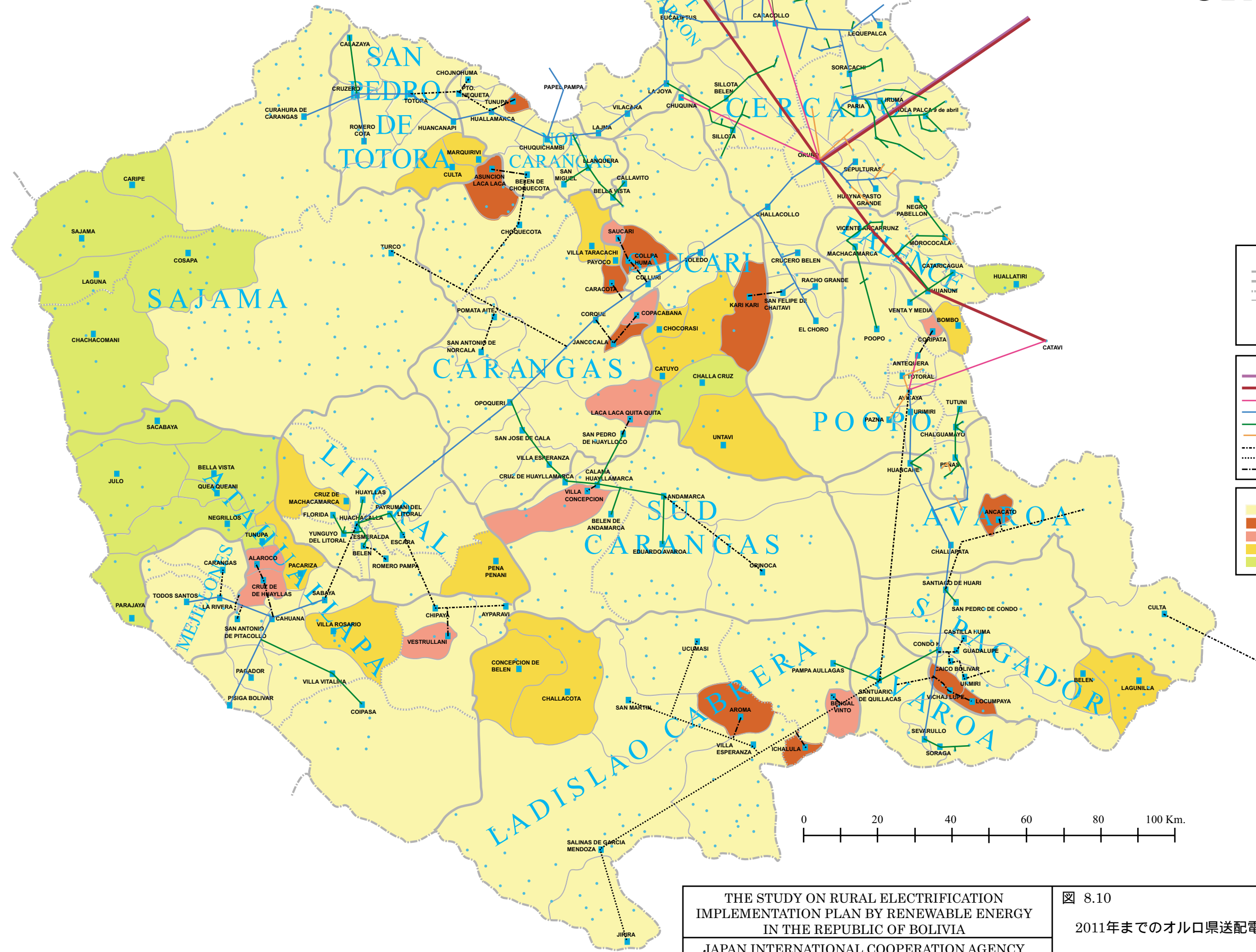
  

<b>LEGEND</b>	Grid
	Priority A
	Priority B
	Priority C
	Priority D

THE STUDY ON RURAL ELECTRIFICATION  
IMPLEMENTATION PLAN BY RENEWABLE ENERGY  
IN THE REPUBLIC OF BOLIVIA  
JAPAN INTERNATIONAL COOPERATION AGENCY

図 8.9  
2011年までのラパス県送配電網拡張計画予測図

# DEPARTAMENTO DE ORURO



**LEGEND**

- Department
- Province
- ..... Municipio
- ..... Canton
- Capital of Canton
- Serial of Canton
- Household Without Elec.
- Community

**LEGEND of Transmission Line**

- T/L 230kV (Exist. 2000)
- T/L 115kV (Exist. 2000)
- T/L 69kv (Exist. 2000)
- T/L 24.9kv (Exist. 2000)
- T/L 14.4 kv. (Exist. 2000)
- T/L 6.6 kv. (Exist. 2000)
- ..... T/L Proyecto (2001)
- ..... T/L Proyecto (~2006)
- ..... T/L Proyecto (~2011)

**LEGEND**

- Grid
- Priority A
- Priority B
- Priority C
- Priority D

THE STUDY ON RURAL ELECTRIFICATION  
IMPLEMENTATION PLAN BY RENEWABLE ENERGY  
IN THE REPUBLIC OF BOLIVIA  
JAPAN INTERNATIONAL COOPERATION AGENCY

図 8.10  
2011年までのオルロ県送配電網拡張計画予測図

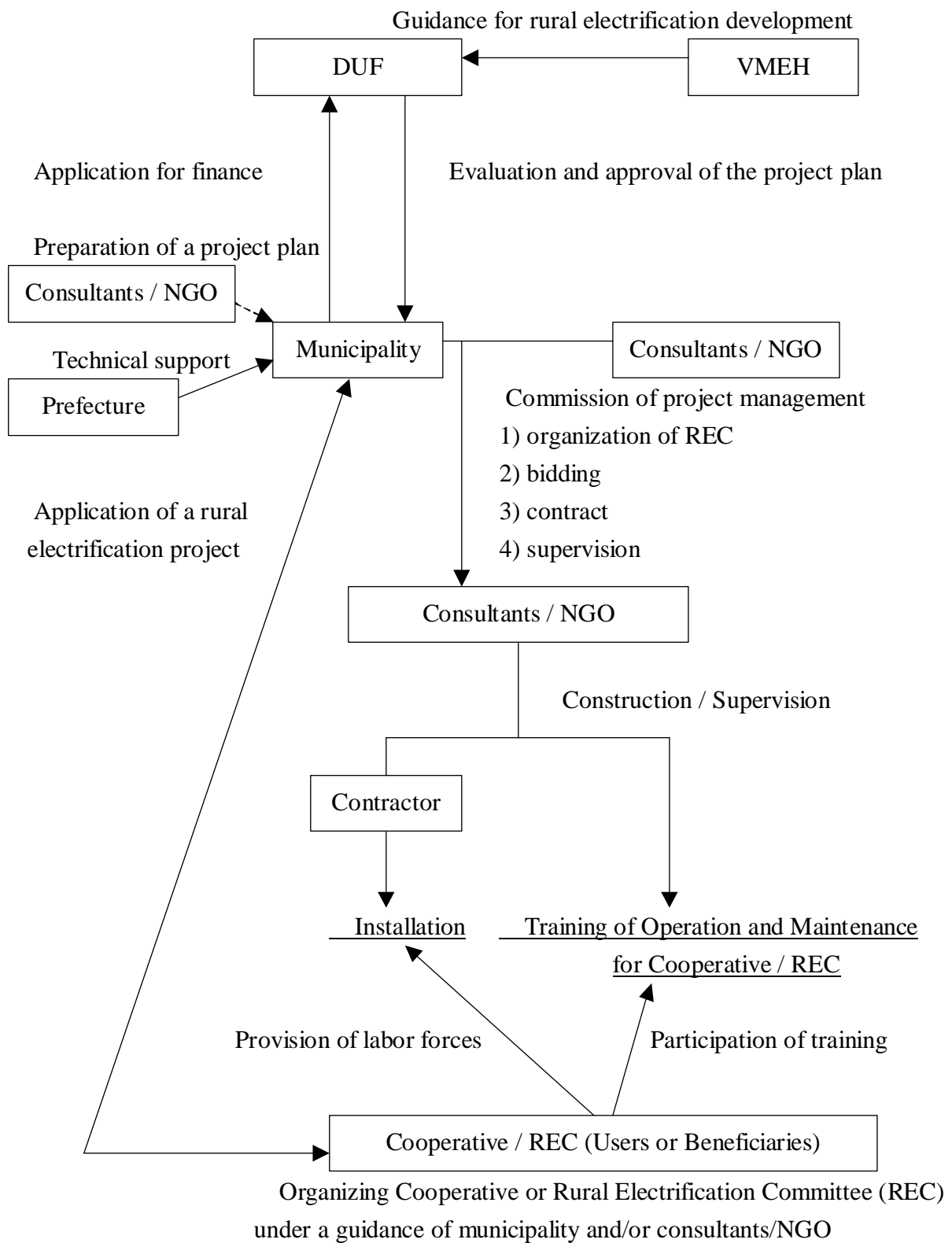
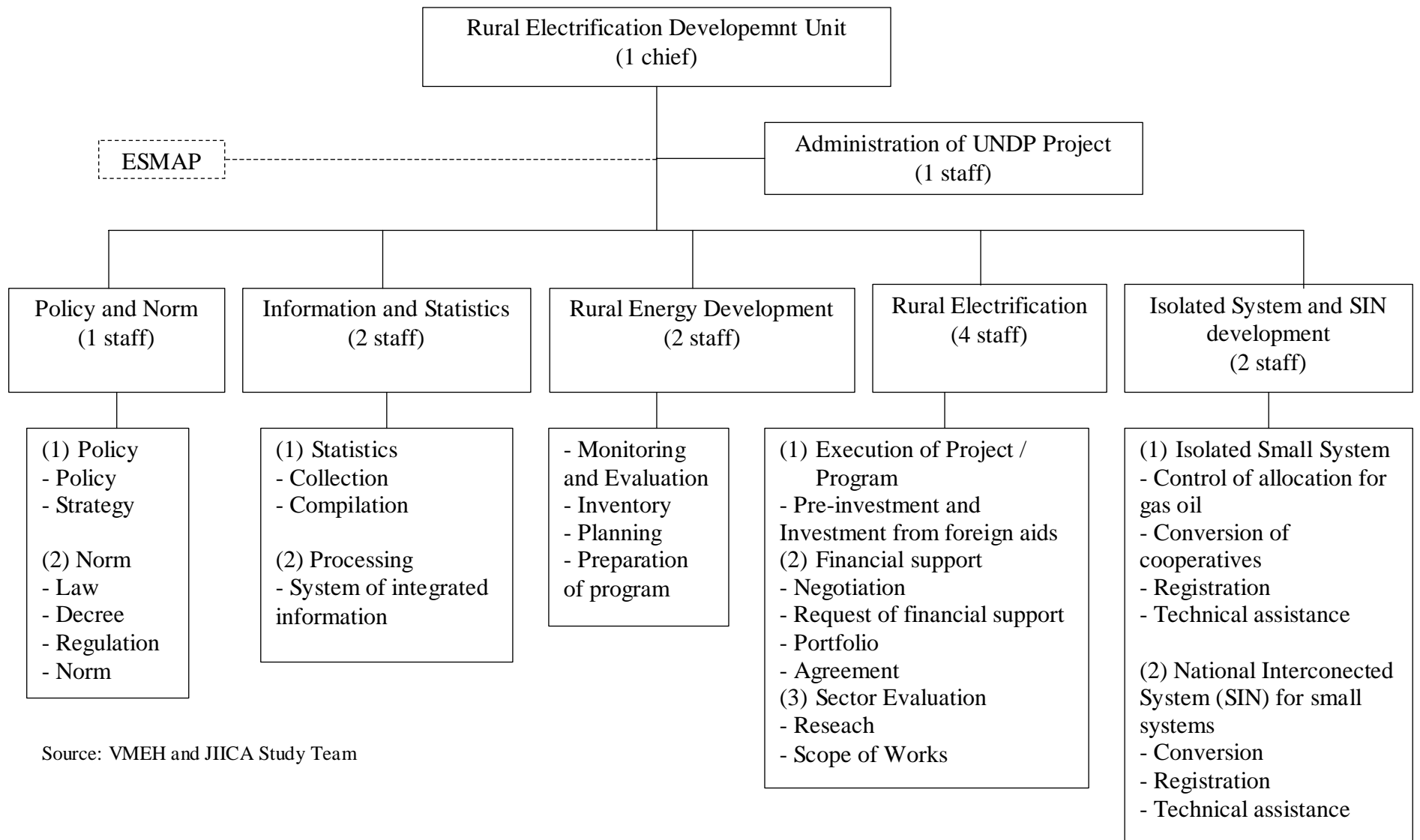


図 8.11 再生可能エネルギー開発のための事業実施構造



Source: VMEH and JICA Study Team

図 9.1 地方電化開発部（現エネルギー開発部）組織図案