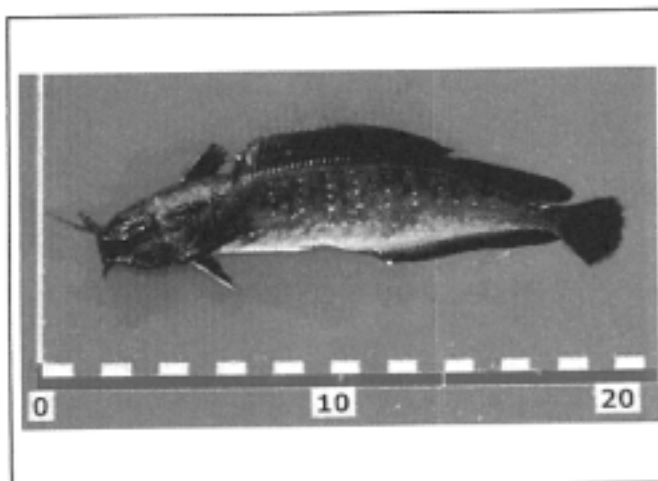
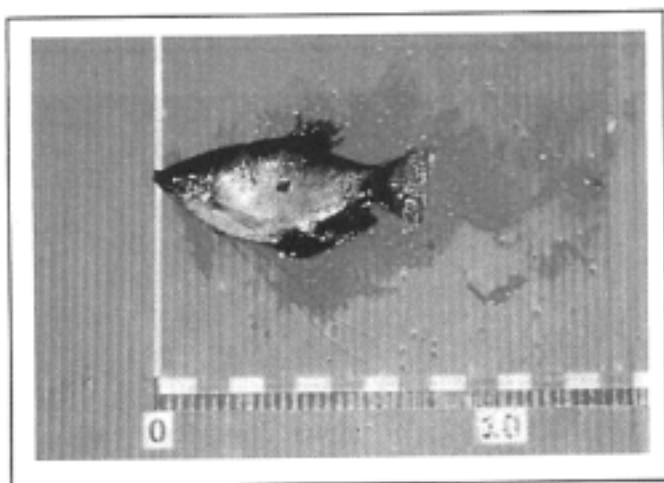


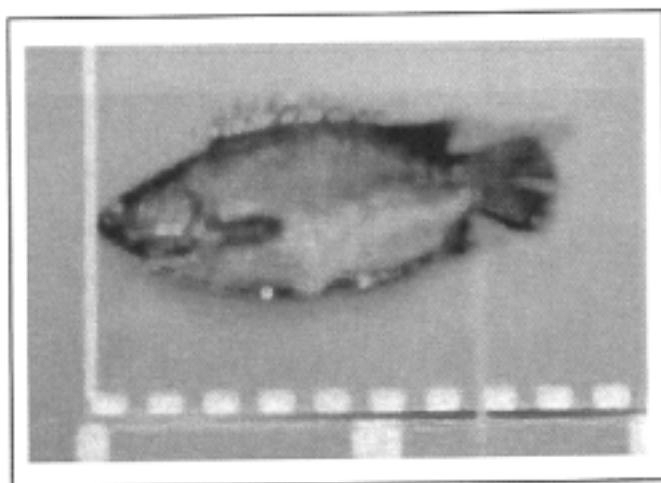
FFS-1



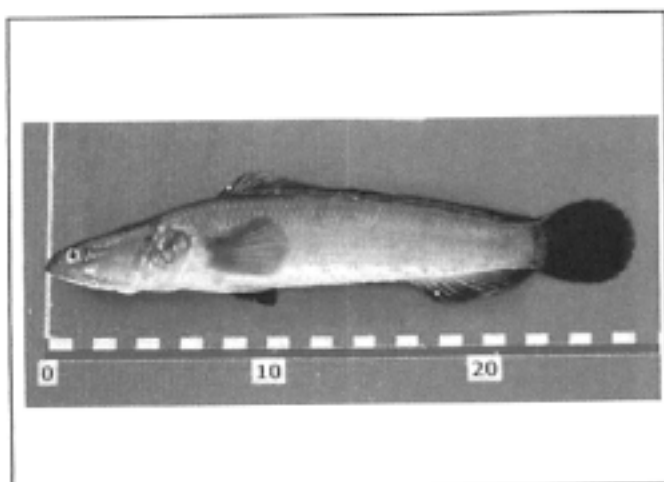
FFS-2



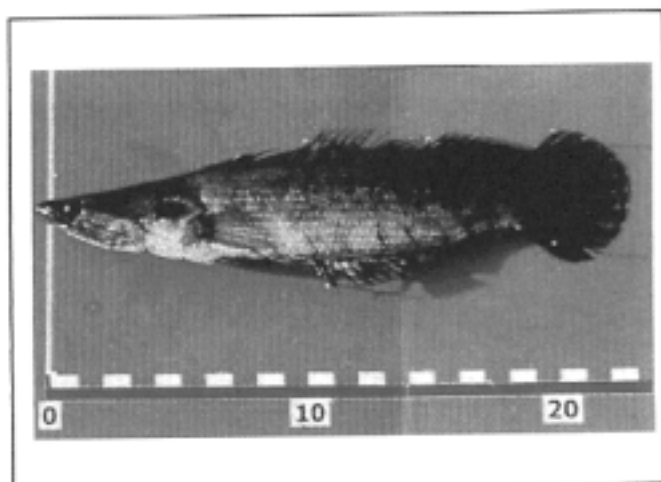
FFS-3



FFS-4

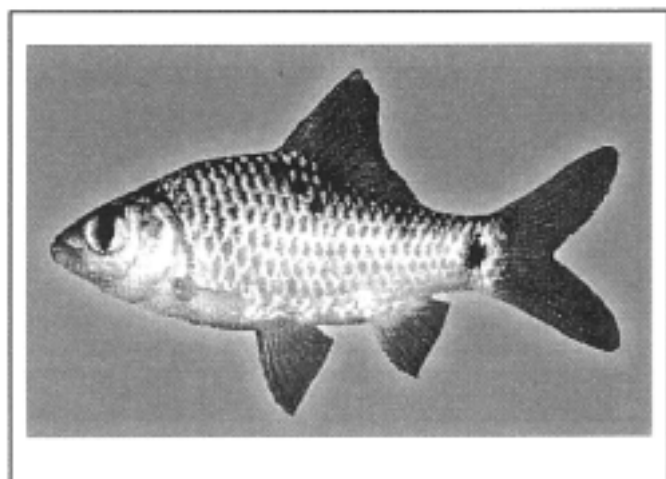


FFS-5

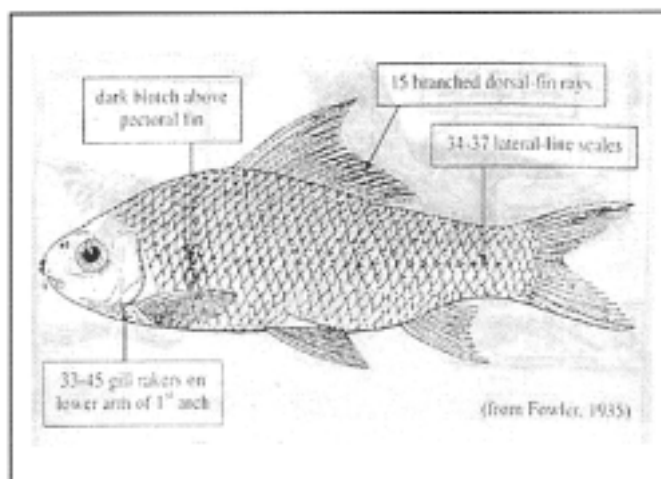


FFS-6

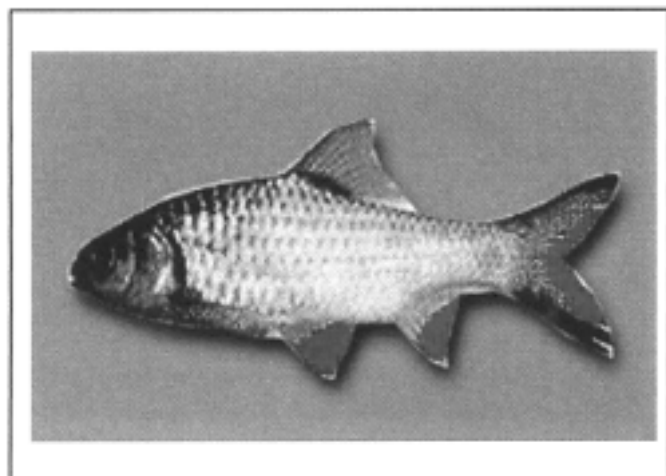
Fig.3.6-1 (1) Photo of Freshwater Fish Species Found at Hun Sen Dam and Prey Treng Pond



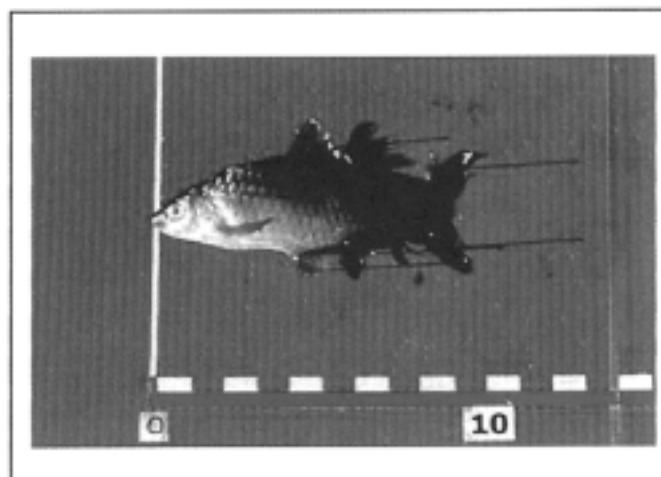
FFS 7



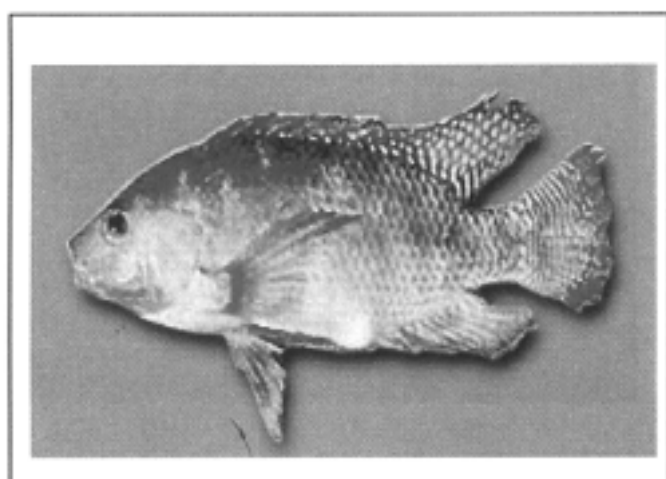
FFS 8



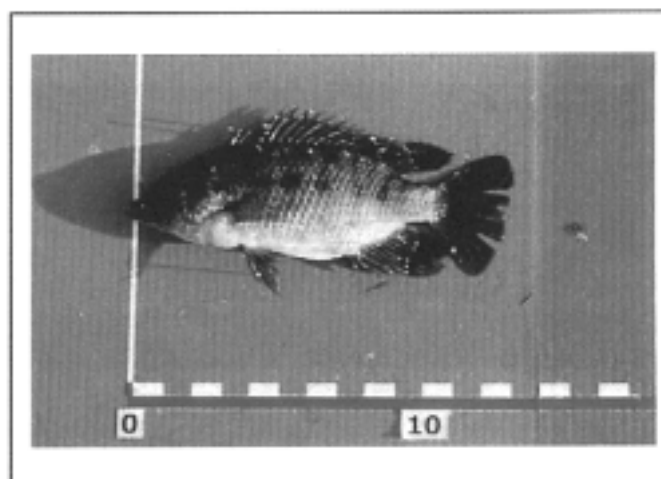
FFS 9



FFS 10

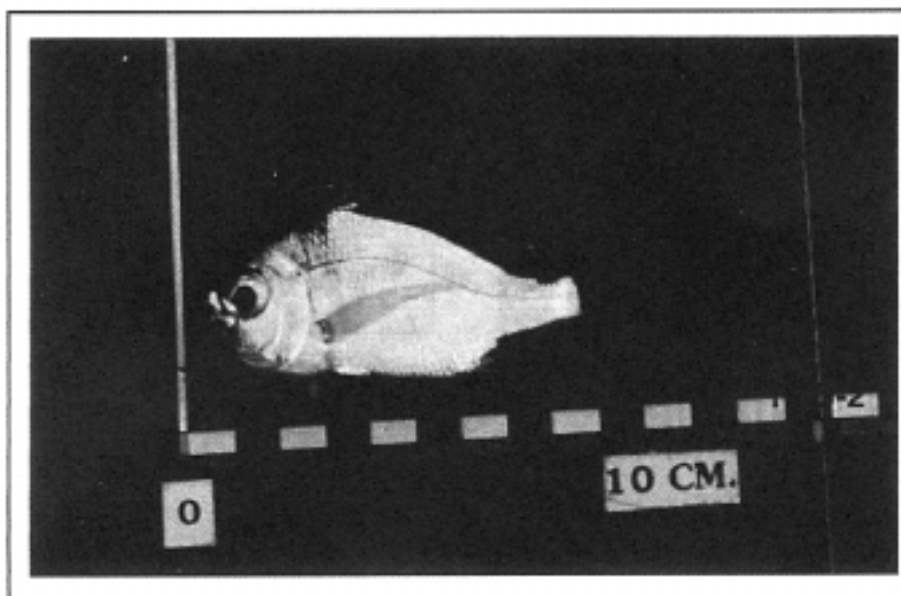


FFS 11

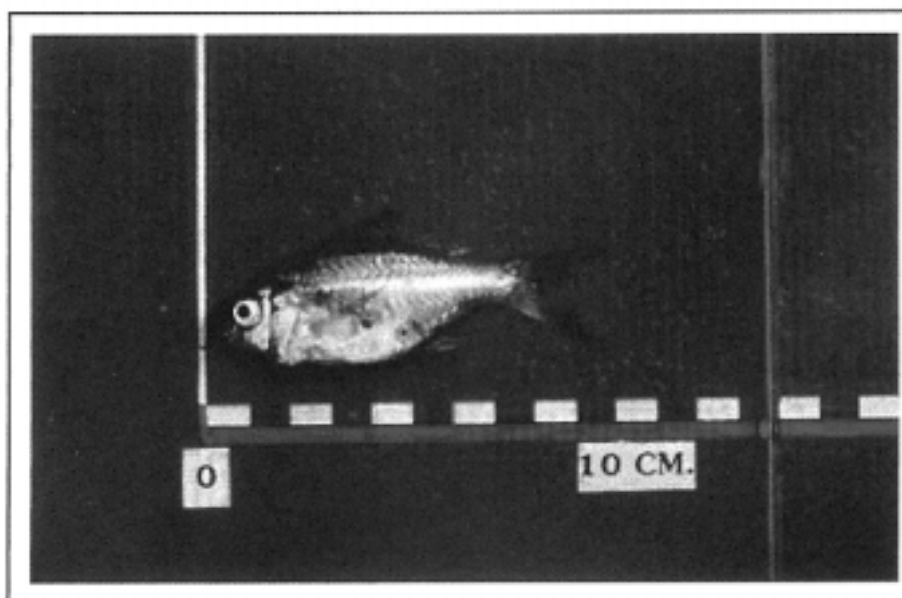


FFS 12

Fig.3.6-1 (2) Photo of Freshwater Fish Species Found at Hun Sen Dam and Prey Treng Pond



FFS 13



FFS 14

Fig.3.6-1 (3) Photo of Freshwater Fish Species Found at
Hun Sen Dam and Prey Treng Pond



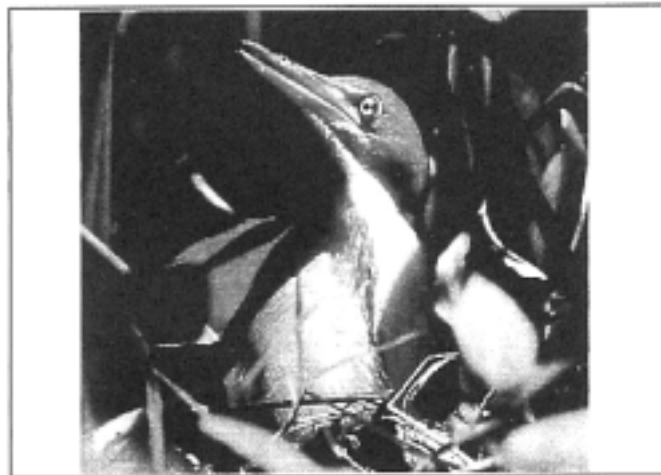
PBS 1



PBS 2



PBS 3



PBS 4



PBS 5



PBS 6

**Fig.3.6-2(1) Photo of Potected Bird Species Found in the Vicinity of
Hun Sen Dam and Prey Treng Pond**



PBS 7



PBS 8



PBS 9



PBS 10



PBS 11

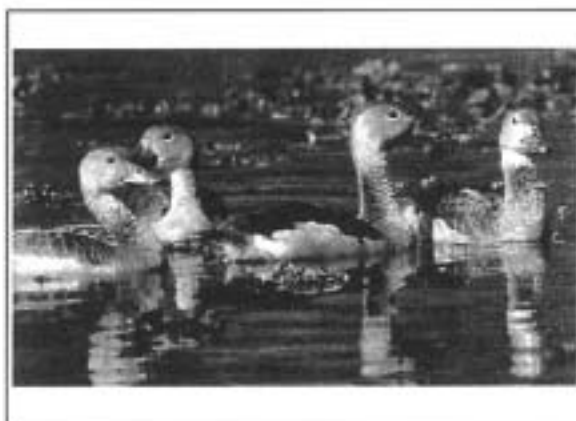


PBS 12

Fig.3.6-2(2) Photo of Potected Bird Species Found in the Vicinity of
Hun Sen Dam and Prey Treng Pond



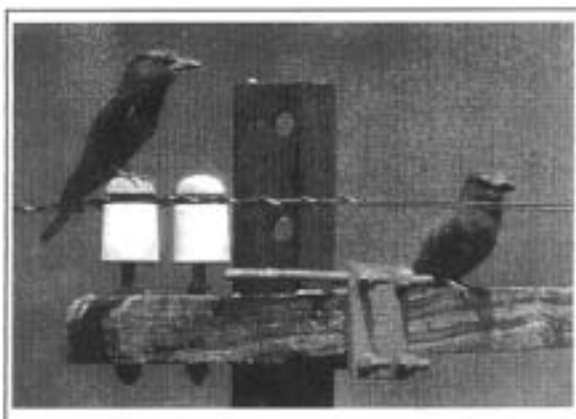
PBS 13



PBS 14



PBS 15



PBS 16



PBS 17



PBS 18

Fig.3.6-2(3) Photo of Protected Bird Species Found in the Vicinity of
Hun Sen Dam and Prey Treng Pond



MPS 1



MPS 2



MPS 3



MPS 4



MPS 5



MPS 6

Fig.3.7-1(1) Photo of Marine Protected Species Possibly Found in the Study Area



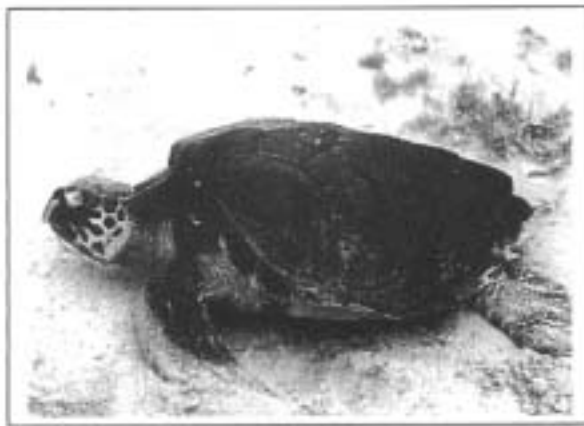
MPS 7



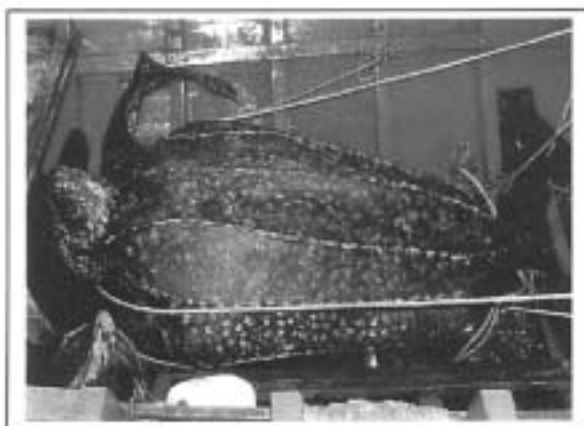
MPS 8



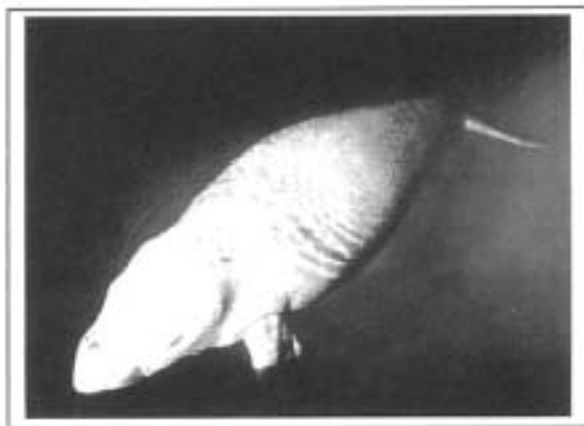
MPS 9



MPS 10

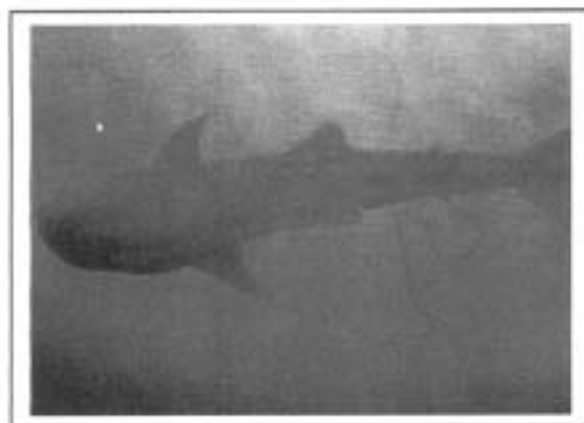


MPS 11



MPS 12

Fig.3.7-1(2) Photo of Marine Protected Species Possibly Found in the Study Area



MPS 13



MPS 14



MPS 15



MPS 16

Fig.3.7-1(3) Photo of Marine Protected Species Possibly Found in the Study Area

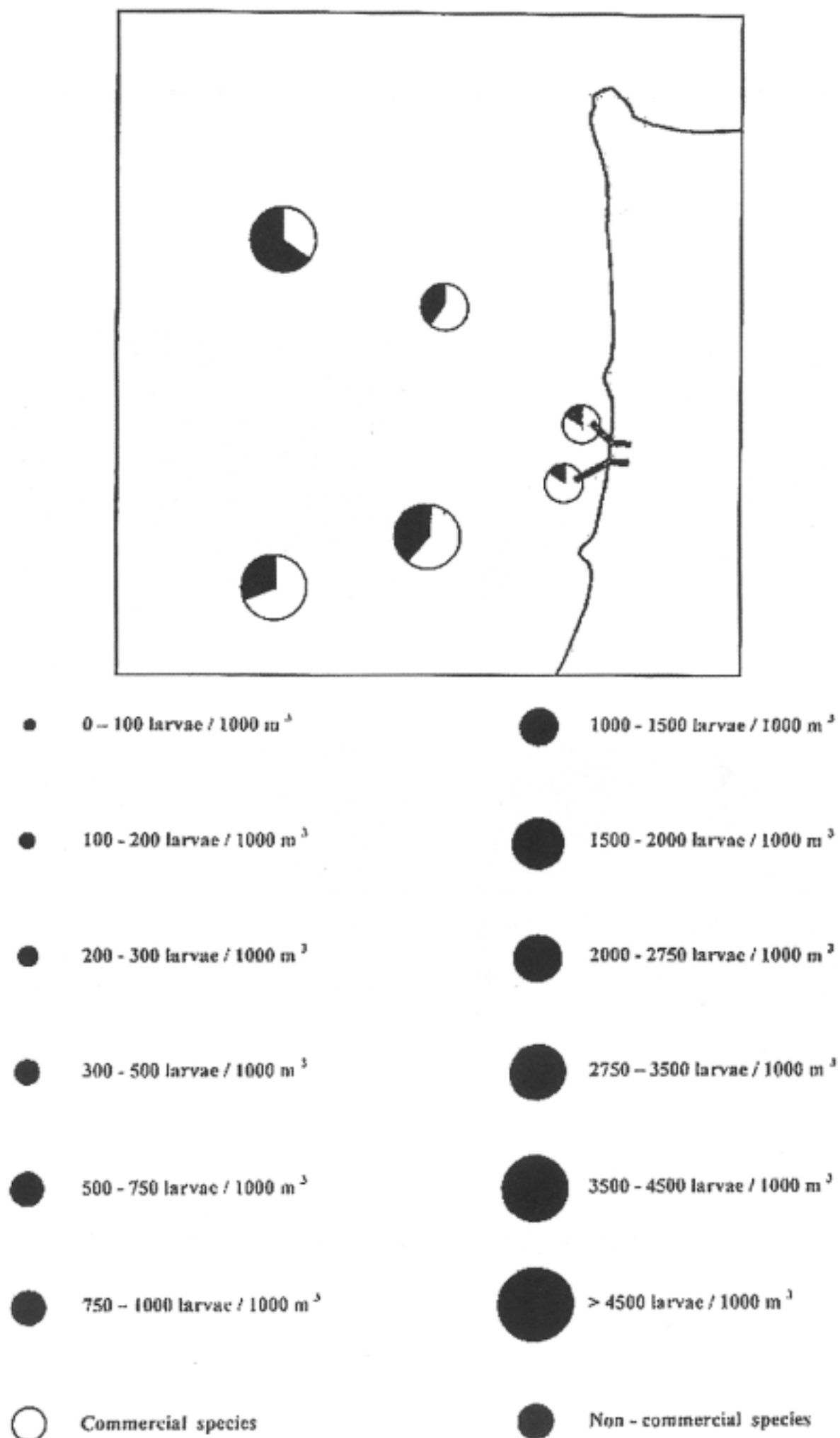


Fig.3.7-2 Abundance and Distribution of Fish Larvae in September 2000 (Larvae/1,000 cu.m.)

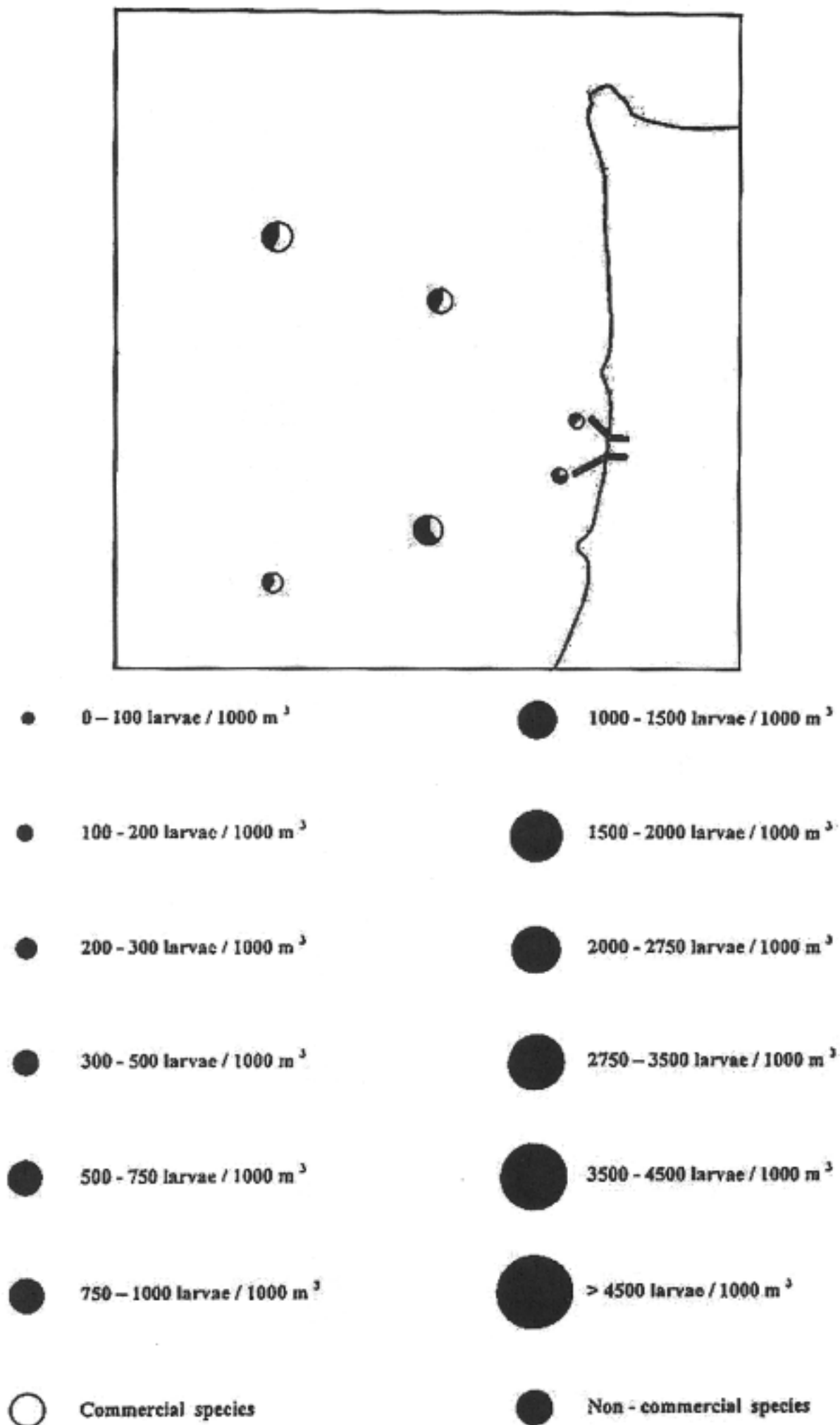


Fig.3.7-3 Abundance and Distribution of Fish Larvae in October 2000 (larvae/1,000 cu.m.)

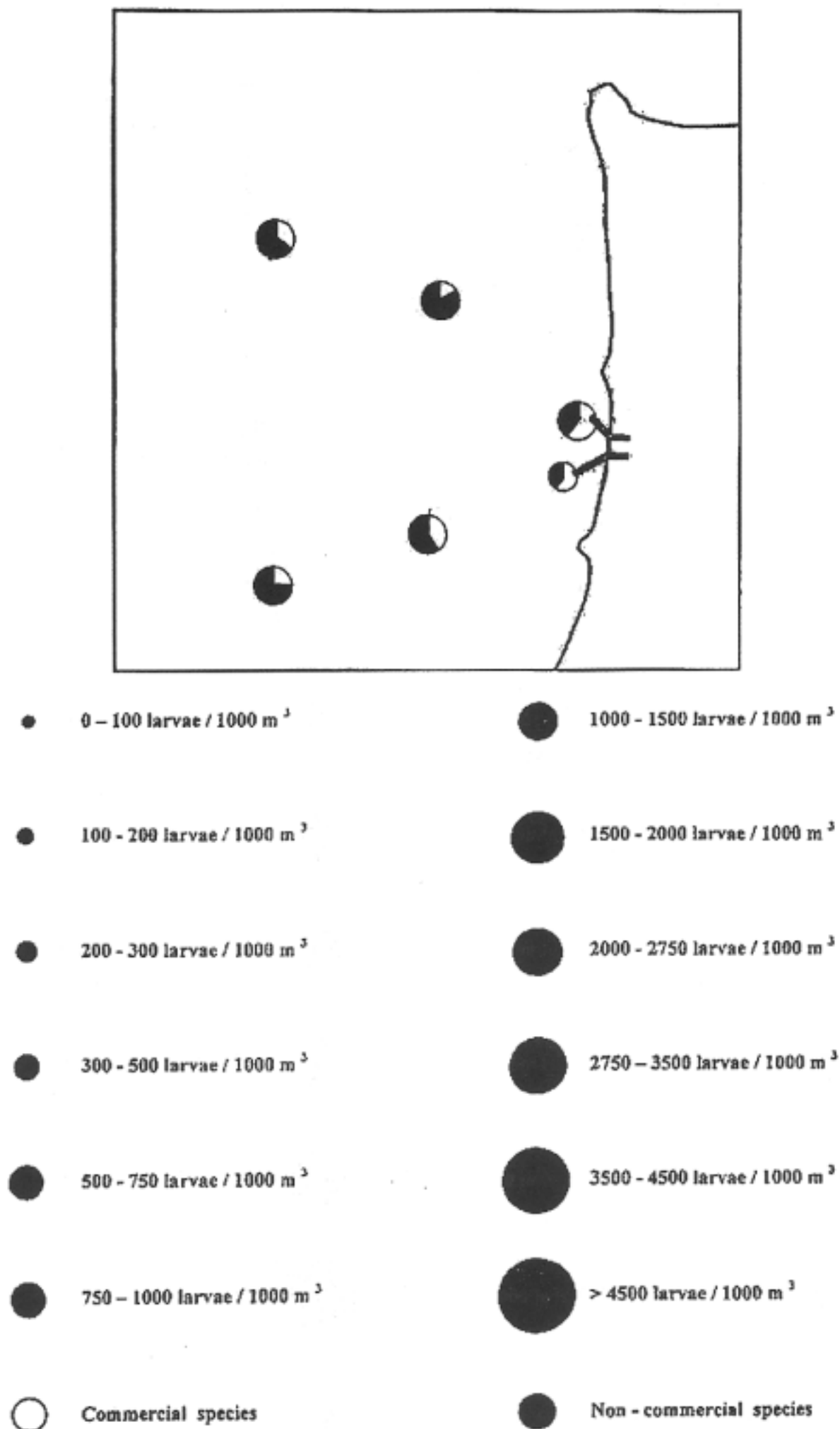


Fig.3.7-4 Abundance and Distribution of Fish Larvae in December 2000 (larvae/1,000 cu.m.)

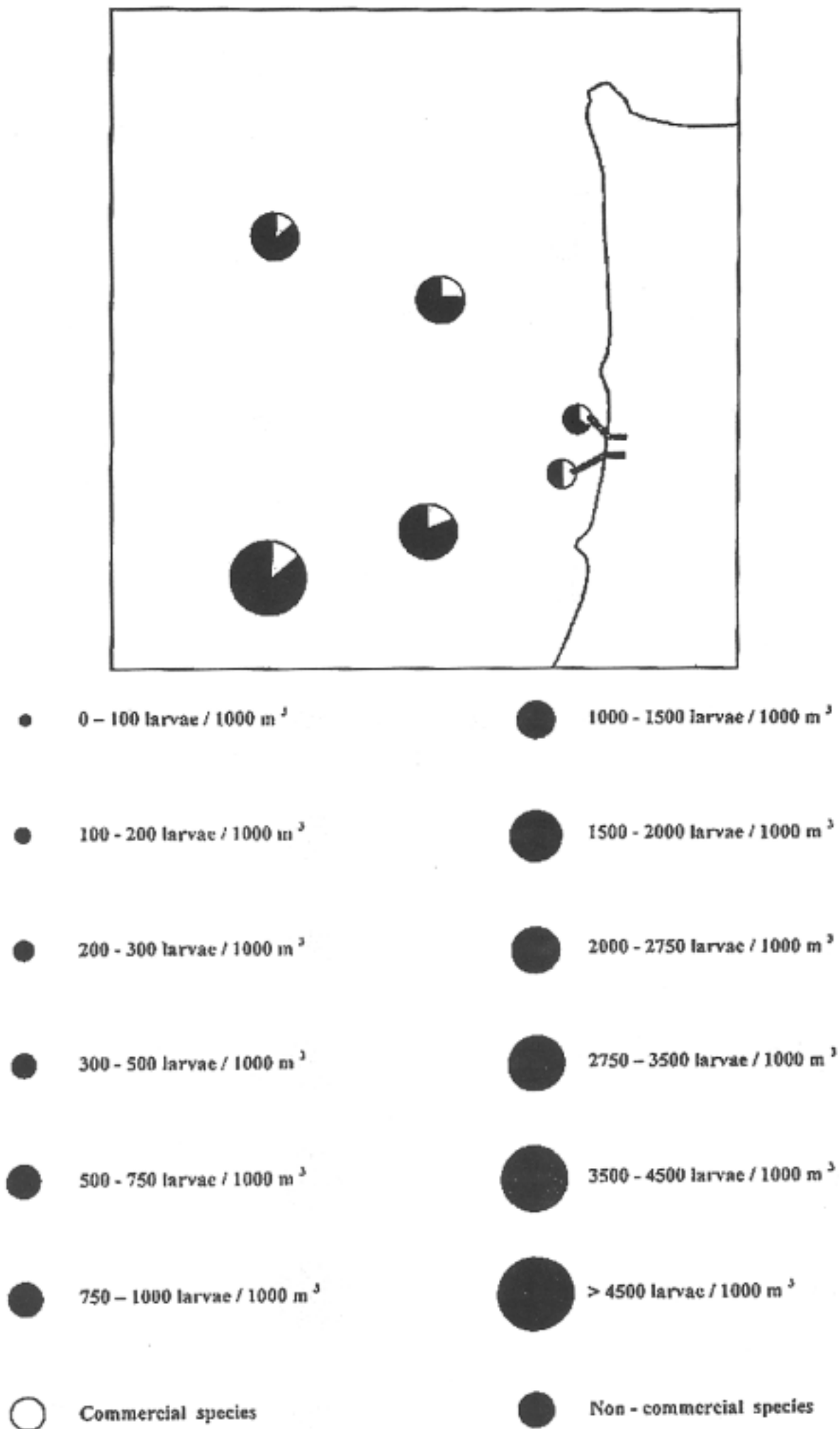


Fig.3.7-5 Abundance and Distribution of Fish Larvae in January 2001 (larvae/1,000 cu.m.)

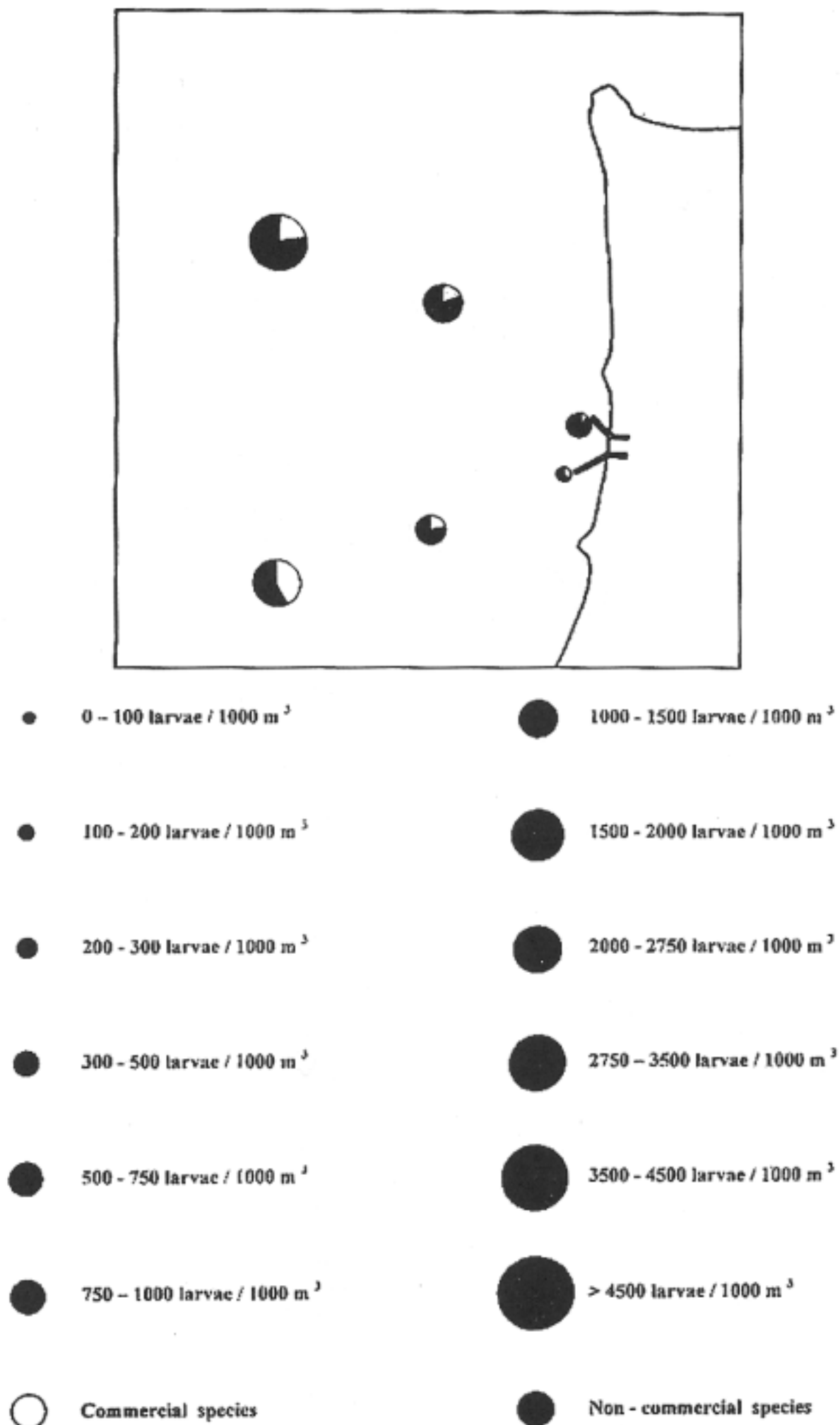


Fig.3.7-6 Abundance and Distribution of Fish Larvae in February 2001 (larvae/1,000 cu.m.)

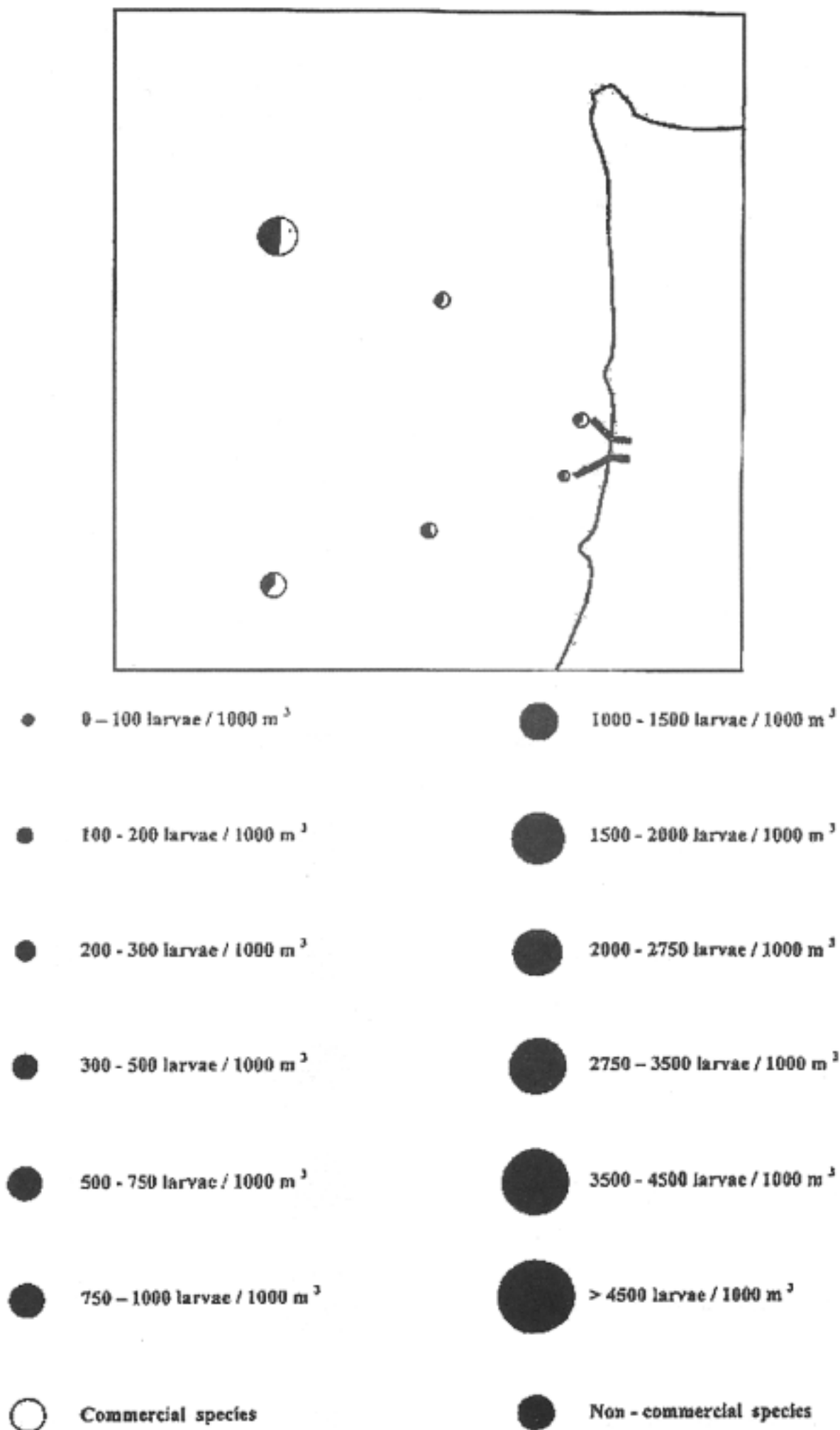


Fig.3.7-7 Abundance and Distribution of Fish Larvae in June 2001 (larvae/1,000 cu.m.)

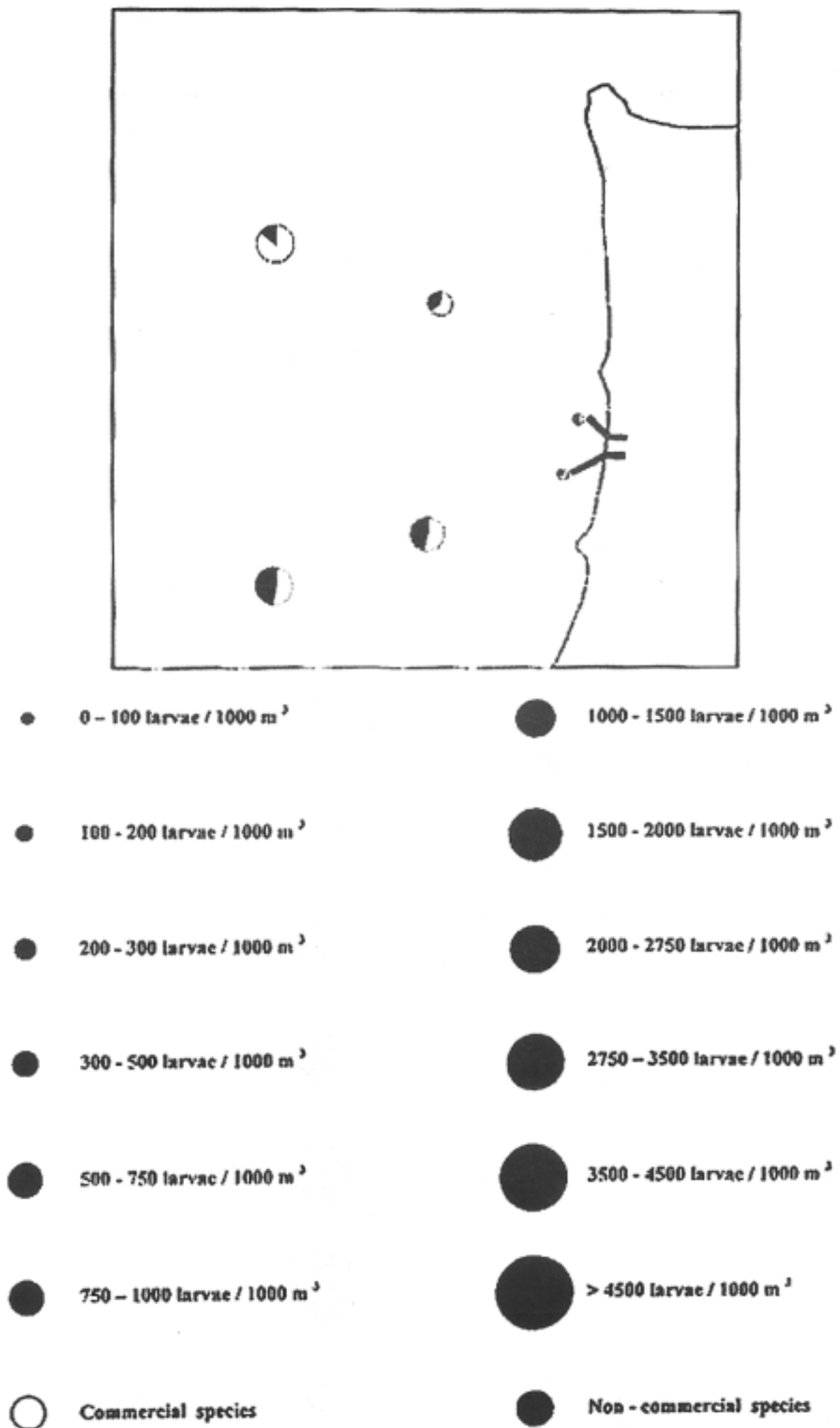


Fig.3.7-8 Abundance and Distribution of Fish Larvae in July 2001 (larvae/1,000 cu.m.)

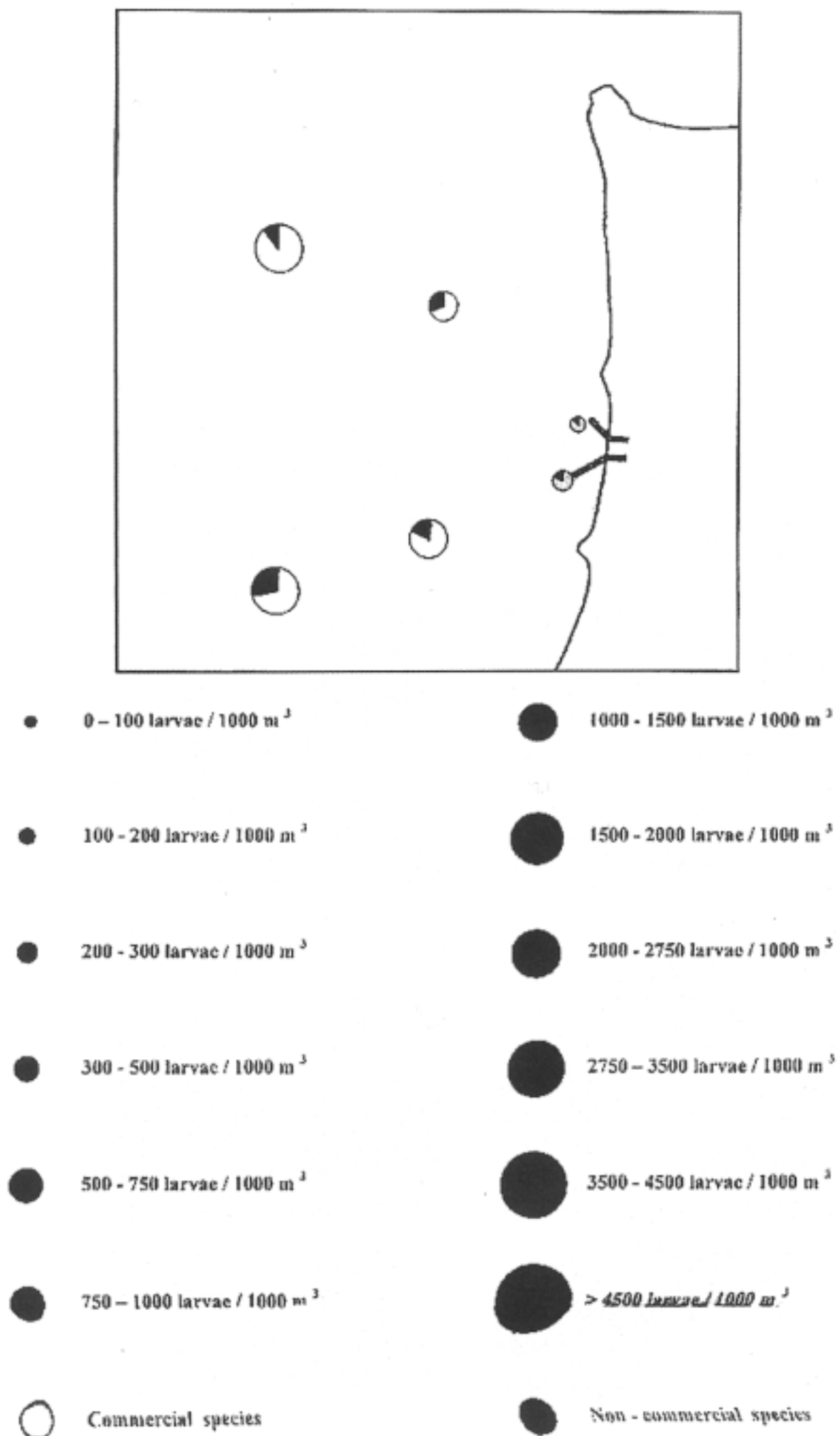


Fig.3.7-9 Abundance and Distribution of Fish Larvae in August 2001 (larvae/1,000 cu.m.)