

**APPENDIX 6**  
**PUBLIC TRANSPORT**

## APPENDIX 6 PUBLIC TRANSPORT

### Table of Contents

A6.1 Public Transport System and Administration.....	A6-1
A6.2 Public Transport Network .....	A6-13
A6.3 Bus transport .....	A6-14
A6.4 Taxi Transport .....	A6-19
A6.5 Para-transit Transport.....	A6-19
A6.6 Railway Transport .....	A6-20
A6.7 River Transport .....	A6-28
A6.8 Air Transport .....	A6-30
A6.9 Problem Identification and Evaluation .....	A6-36

## **APPENDIX A6 PUBLIC TRANSPORT**

### **A6.1 PUBLIC TRANSPORT SYSTEM AND ADMINISTRATION**

#### **A6.1.1 Public Transport System**

There are eight (8) public transport modes currently operated in Phnom Penh, as shown in Table A6.1.1. Among them, only railway transport is operated by the public sector (as a public corporation) and the rest, by the private sector.

Buses and taxi-buses mainly provide inter-city services. Bus terminals can be found in Central Market. Private companies operate buses. There used to be a city bus system in Phnom Penh before, however, service had been suspended due to the deteriorated road conditions caused by the large number of motorcycles. On the other hand, taxi-buses are one of the most convenient public transport modes from/to provinces. Included under this category are vans, pickups and sedan type of vehicles; the word 'Location' is painted in Khmer language on one side of the vehicles. Just like ordinary buses, taxi-buses have specific routes, but when these are disregarded and passengers are brought to their desired destinations, they assume a taxi-like function. There are 4 terminals for taxi-buses in the CBD, mostly located near a market.

There are 87 taxis in Phnom Penh, painted yellow and white. These taxis usually wait for passengers at airports, serving as airport taxis.

Motodop, motorumok and cyclo are the para-transit mode in Phnom Penh. They are the most common public transport mode in the city, especially the motodop. Motorumok usually caters to the suburban areas in Phnom Penh.

Royal Railways of Cambodia operates a 650-km railway network in the country. There is no urban railway service within Phnom Penh Metropolitan Area.

River transport, including navigable sections of main rivers, totals about 1,400 km in rainy season and less than 650 km at other times in the country. There are seven (7) ferry jetties in Phnom Penh for public transport use: 3 for intra-city use and 4 for inter-city.

Air transport network comprises 9 international routes and 7 domestic routes, centered at Pochentong International Airport. Total annual air passengers are approximately 800 thousand in 1999.

#### **A6.1.2 Administration**

The activities of public transport services in Phnom Penh Metropolitan Area are maintained by various organizations and agencies.

Basically, the permission of intra-city public transport services by road and waterway, such as river transport, taxi and para-transit, in Phnom Penh Metropolitan Area are the responsibility of the Department of Public Works and Transport in the Municipality of Phnom Penh. On the other hand, the permission of inter-city public transport services by road and waterway, mainly bus and taxi-bus are undertaken by the Ministry of Public Works and Transport of the Royal Government of Cambodia.

On the other hand, the State Secretariat of Civil Aviation is responsible for air transport and the Royal Railway of Cambodia is in charge of rail transport, which is run as a public corporation, indirectly supervised by the Ministry of Public Works and Transport. These modes are also inter-city transport services.

Figure A6.1.2 shows the relationship between the different public transport modes as well as the organizations in charge of their operations in Phnom Penh Metropolitan Area. Figures A6.1.3 (a) to A6.1.3 (g) depict their respective organizational charts.

Table A6.1.1.1 Public Transport Modes in Phnom Penh

No.	Mode	Operation	Control	Type of Service	No. of Terminals	No. of Fleet	Passengers in 1999/2000		Remarks
							(pax/day)	(%)	
1	Air Transport	Royal Air Cambodge President Airline Phnom Penh Airways	State Secretariat of Civil Aviation	International / Inter-city	Pochentong Airport	AN20: 1 (Cargo) AN12: 2, AN24: 2 B737:	760		No. of passengers is for the whole country: 2,670/day
2	Railway Transport	Royal Railways of Cambodia	Royal Railways of Cambodia	Inter-city	3 stations in P.P.	29 Locomotives 239 Wagons	360		No. of passengers is for the whole country: 1,430/day
3	River Transport	Private Sector	Department of Inland Waterway Transport / Department of Water Transport (MPWT)	Inter-city / Intra-city	6 jetties for 7 ferry routes (3 for intra-city and 4 for inter- city)	7 Boats	2,800		2 international freight ports, 2 domestic freight ports and 7 speed boat jetties
4	Bus	Ho Wah Genging Transport Co. G.S.T. Express Bus D.H. Cambodia Group	Ministry of Public Works and Transport / Department of Public Works and Transport	Inter-city	1 terminal + 2 on-street Central Market	50	12,820		14-hour Traffic
	Taxi-bus (Van, Pick-up and Sedan)	6 terminals							
5	Taxi	Private Sector		Intra-city	No Terminal	82			
6	Motodop					6,098			
7	Cyclo					1,203			
8	Motorumok/Cyclerumok					227			

Source 1: Royal Railway of Cambodia

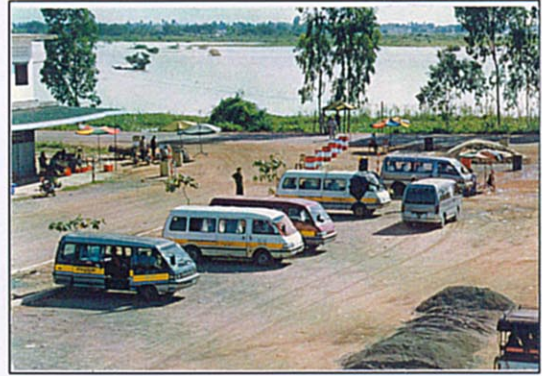
2: Ministry of Public Works and Transport, Department of Inland Waterway Transport

3: State Secretariat of Civil Aviation

4~8: Department of Public Works and Transport



Bus



Taxi-bus (Van, pickup & sedan)



Taxi



Motodop



Cyclo



Motorumok

Figure A6.1.1(a) Public Transport Modes in Phnom Penh



Railway Transport



River Transport



Air Transport

Figure A6.1.1(b) Public Transport Modes in Phnom Penh

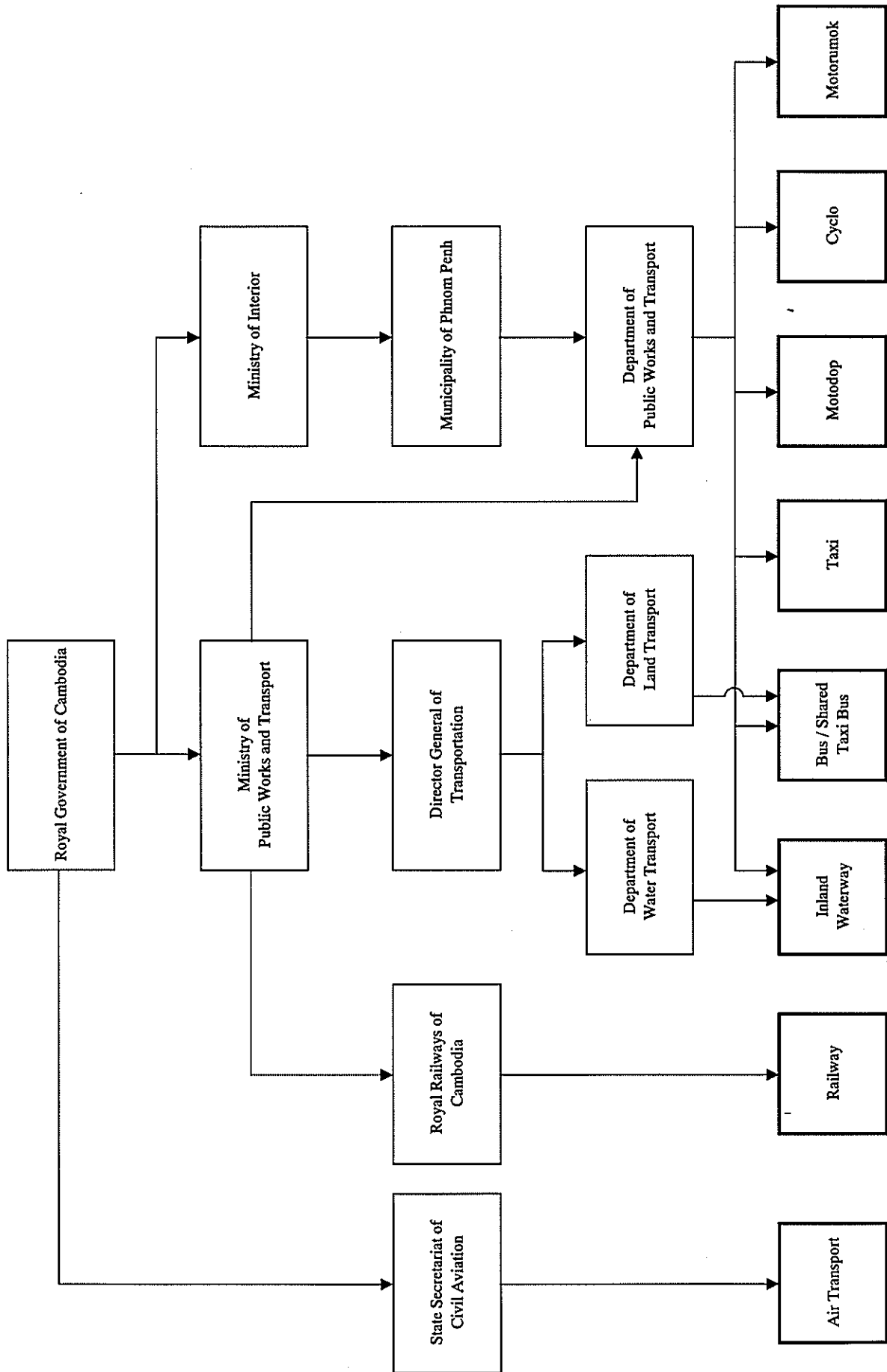
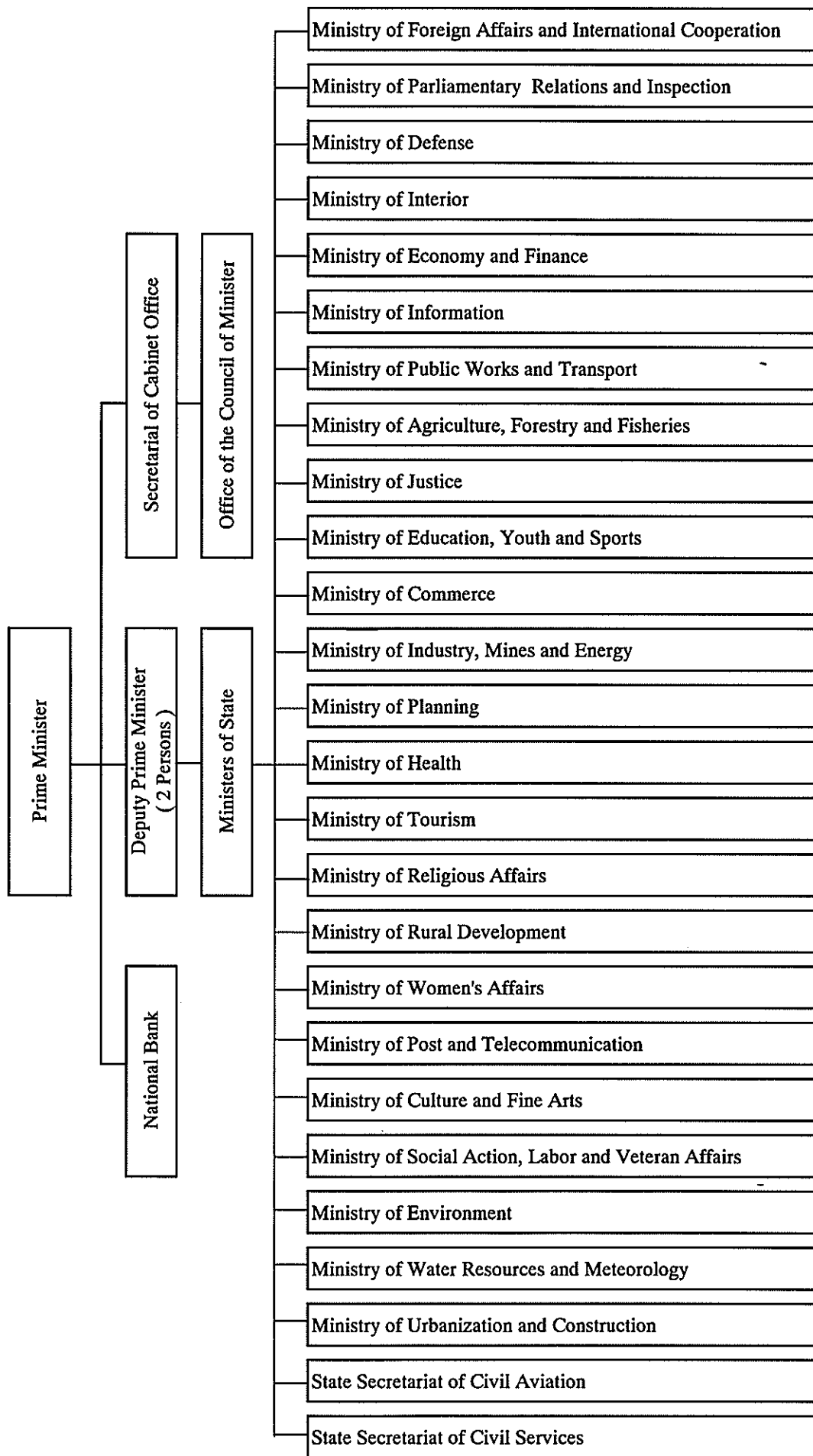


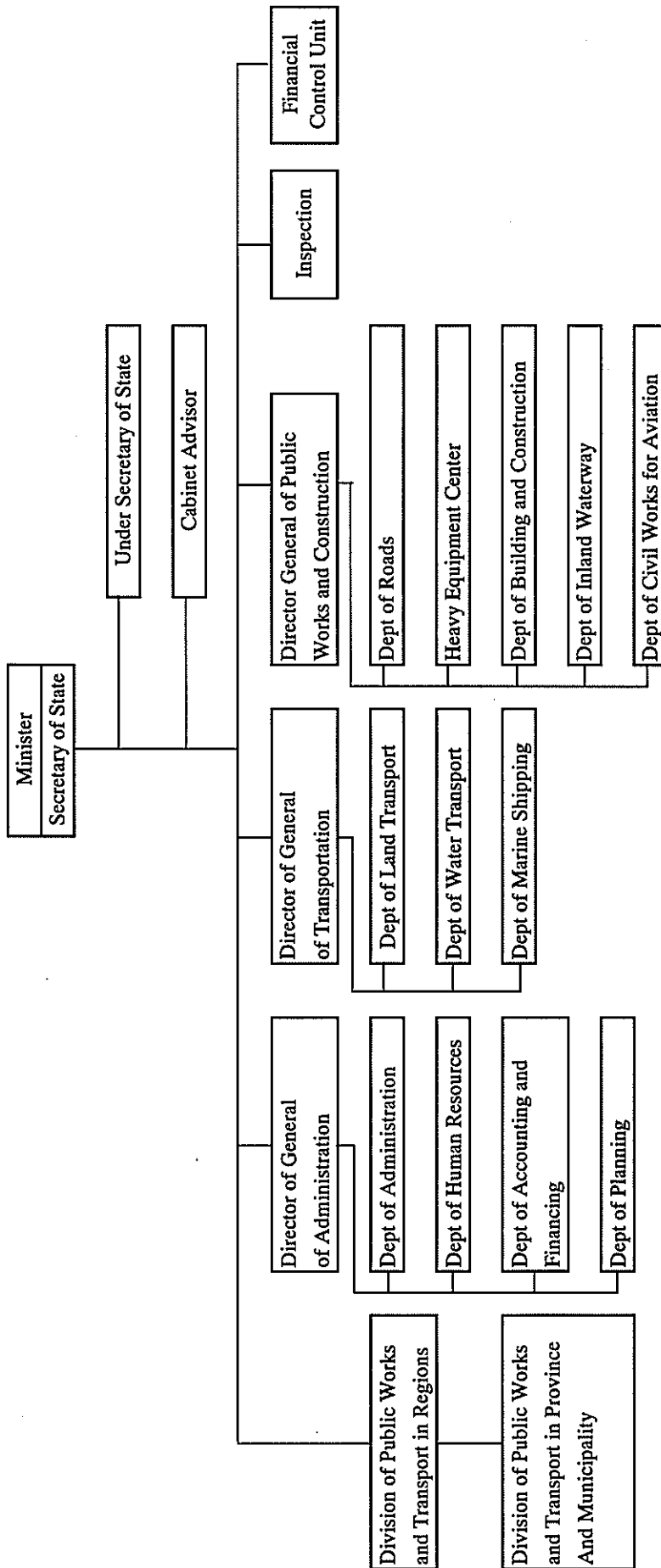
Figure A6.1.2 Relationship between the Different Public Transport Modes as well as the Organizations In Charge of their Operations



Source: Royal Government of Cambodia

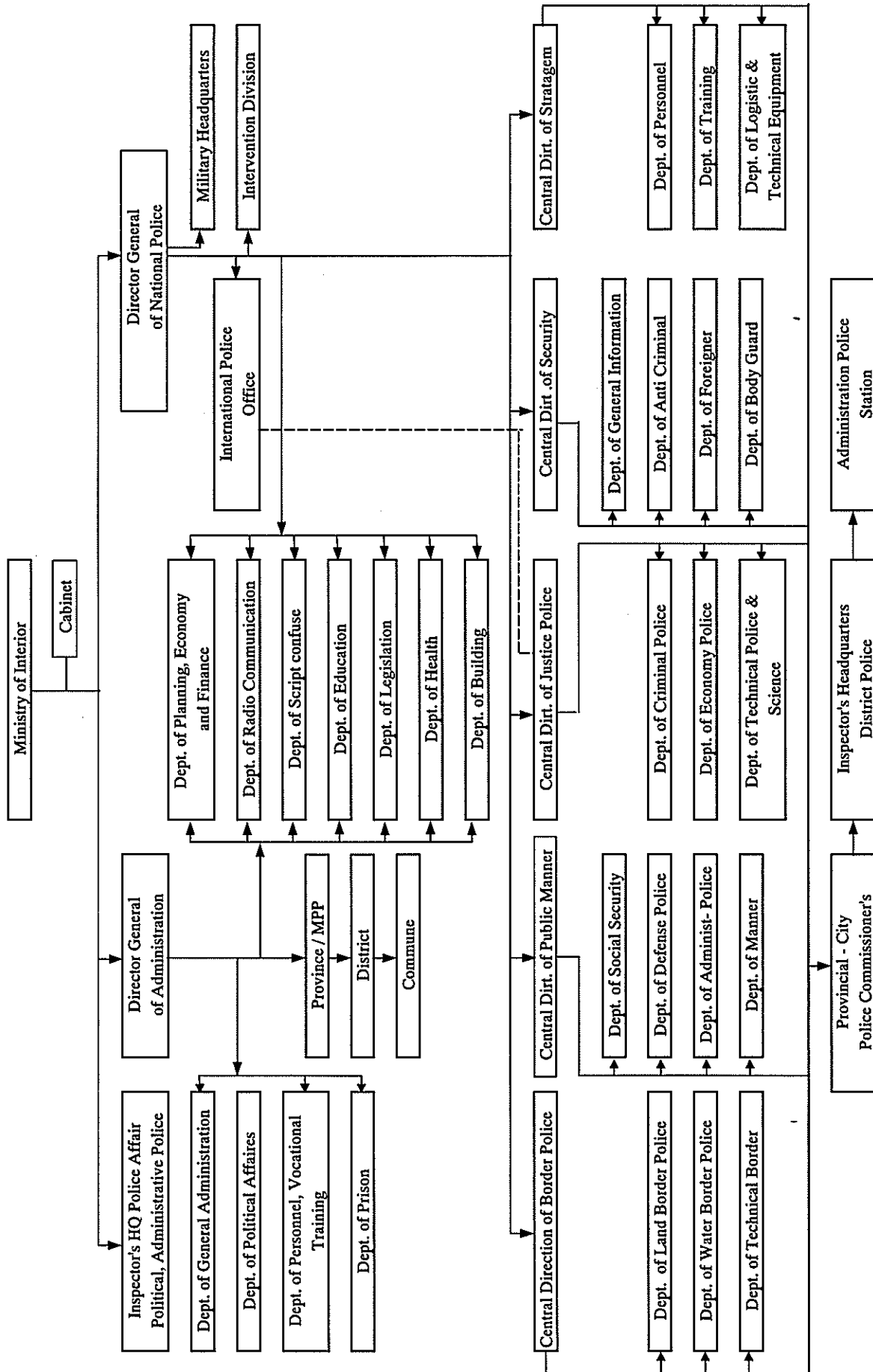
Figures A6.1.3 (a) Organizational Chart of the Royal Government of Cambodia





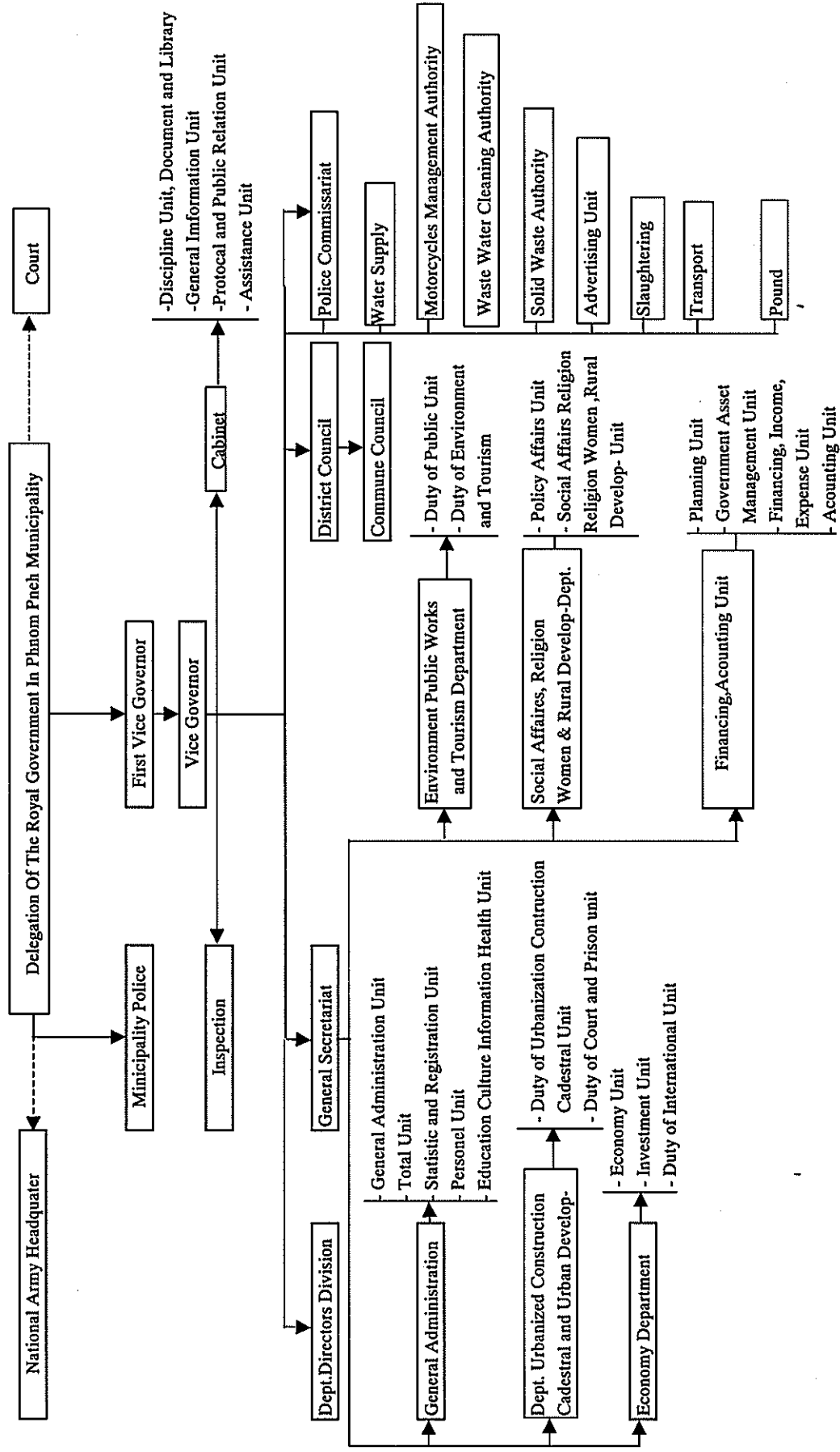
Source: The Ministry of Public Works and Transport

Figures A6.1.3 (b) Organizational Chart of the Ministry of Public Works and Transport



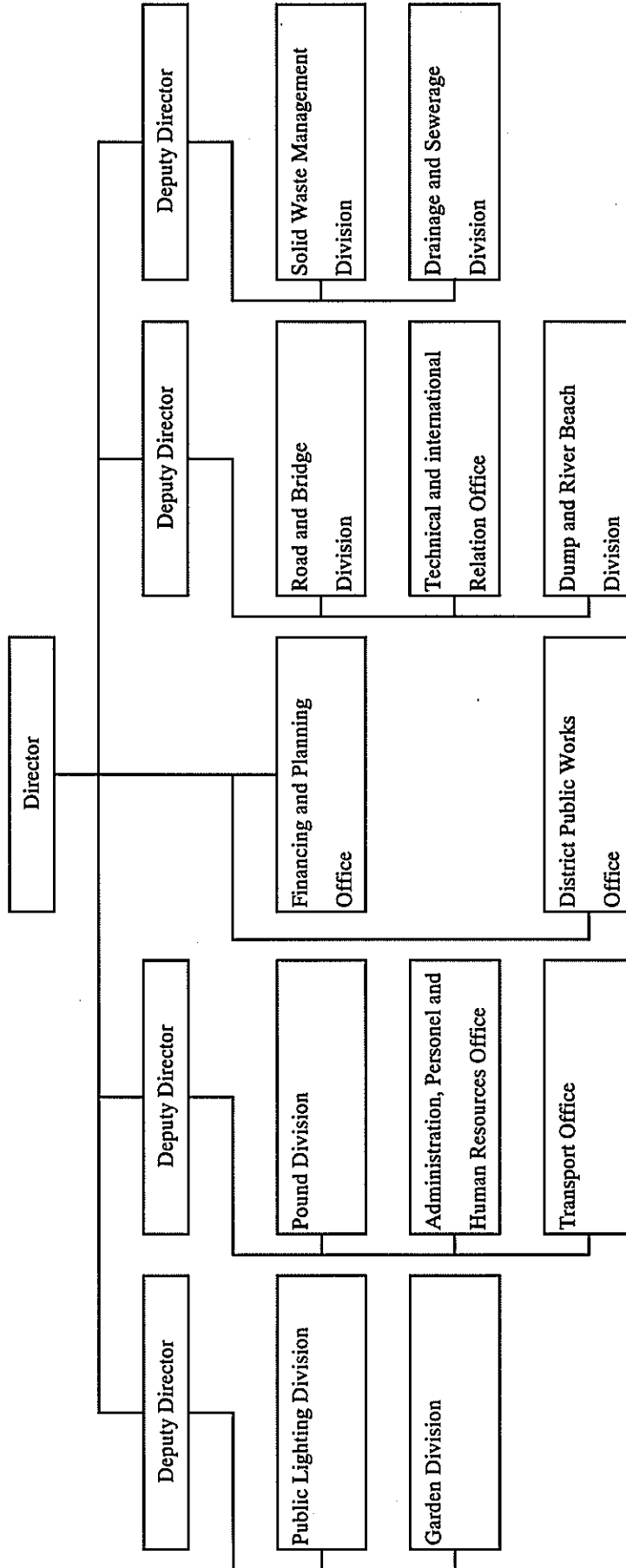
Source: Ministry of Interior

Figures A6.1.3(c) Organizational Chart of the Ministry of Interior



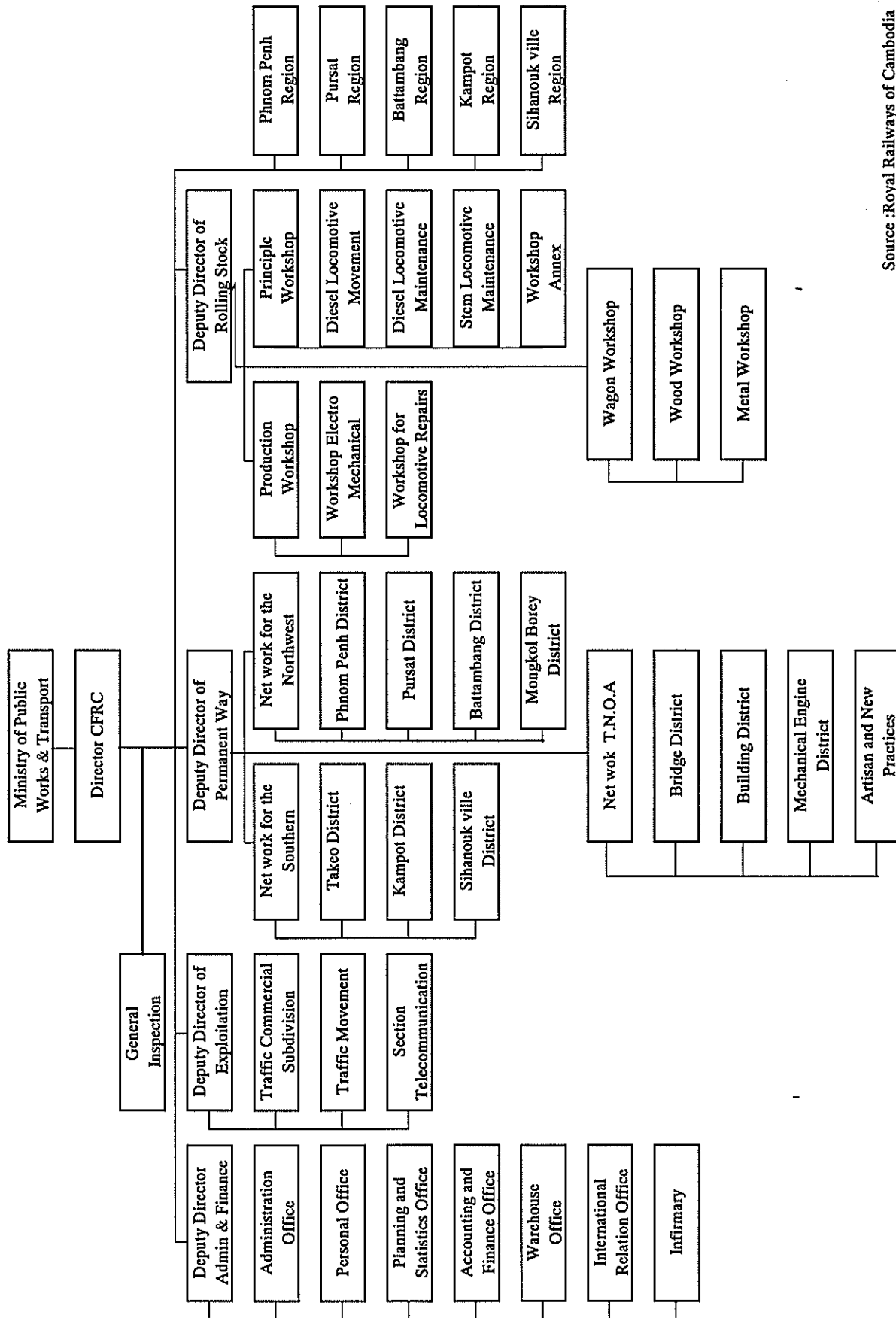
Source: The Municipality of Phnom Penh

Figures A6.1.3 (d) Organizational Chart of the Municipality of Phnom Penh



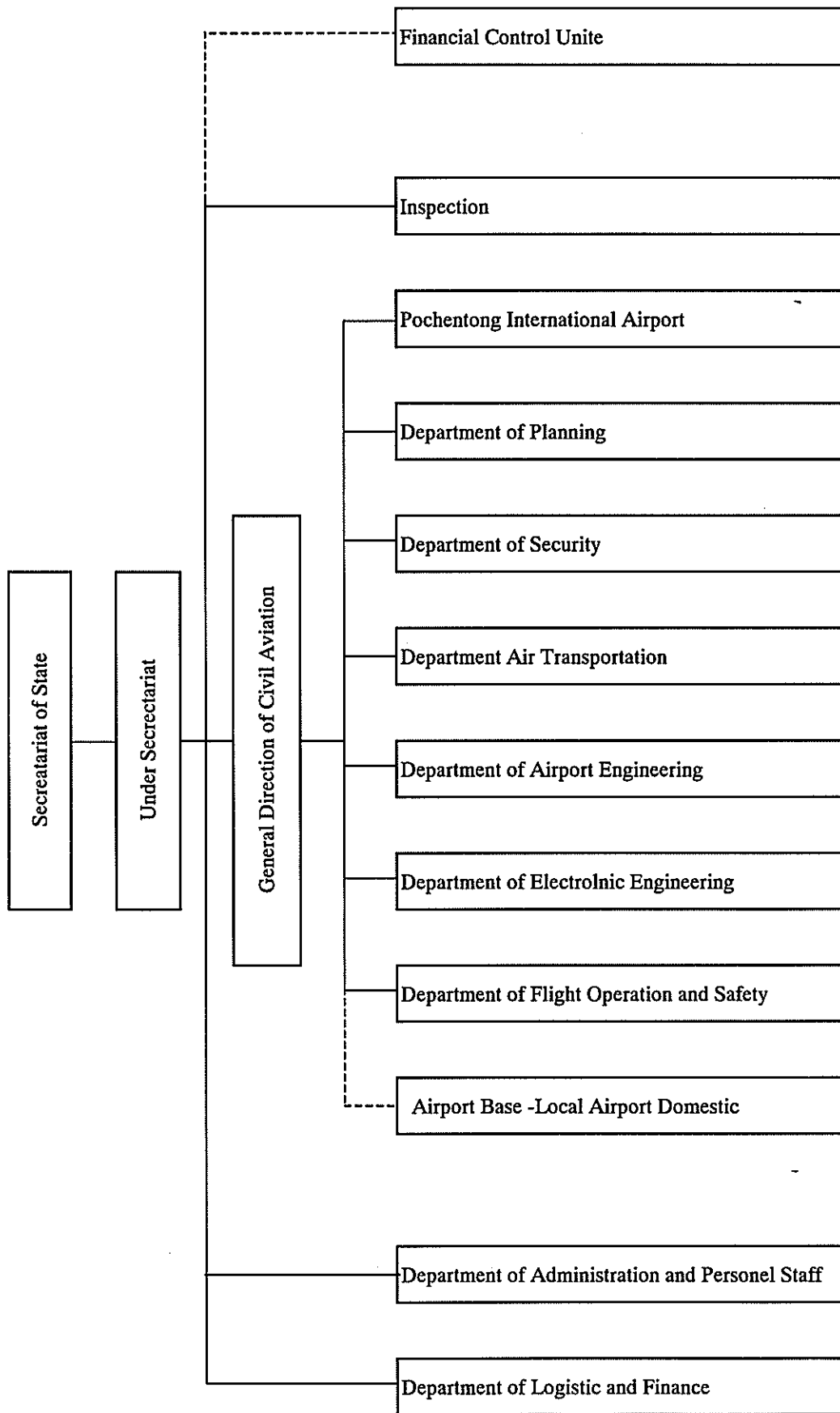
Source: Department of Public Works and Transport

Figures A6.1.3 (e) Organizational Chart of Department of Public Works and Transport



Source :Royal Railways of Cambodia

Figures A6.1.3 (f) Organizational Chart of the Royal Railways of Cambodia



Source: The State Secretariat of Civil Aviation

Figures A6.1.3 (g) Organizational Chart of the State Secretariat of Civil Aviation