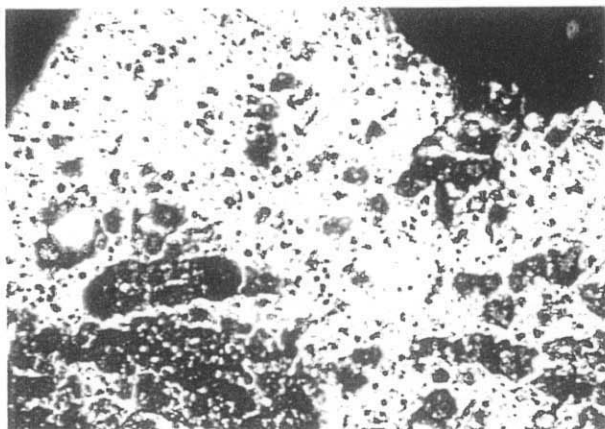
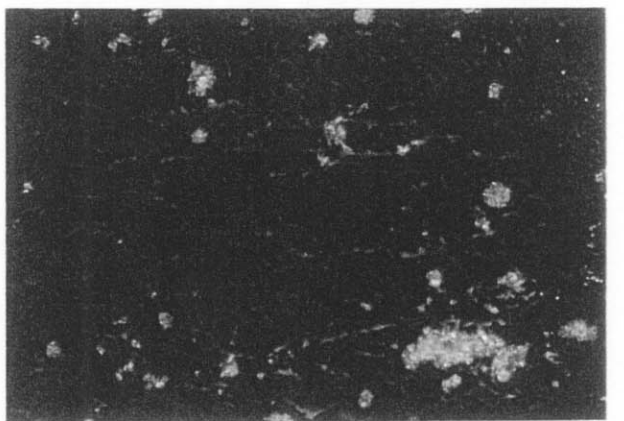
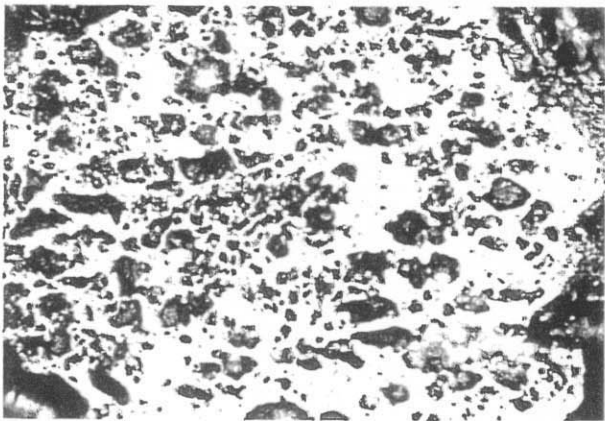
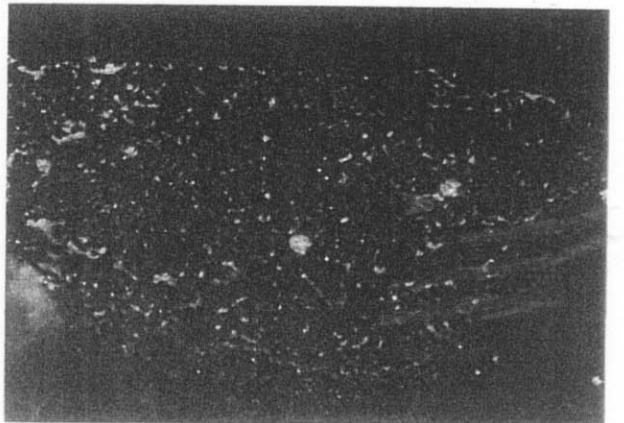
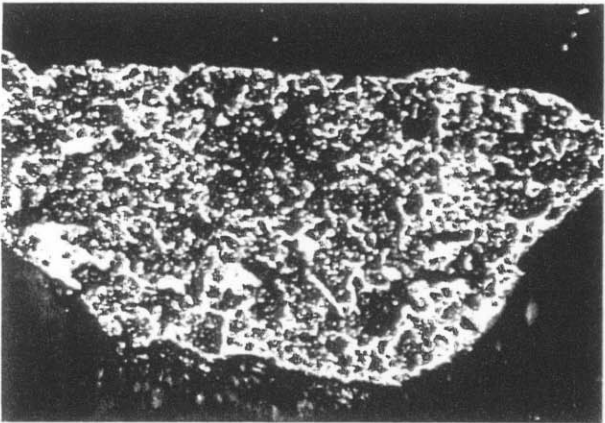
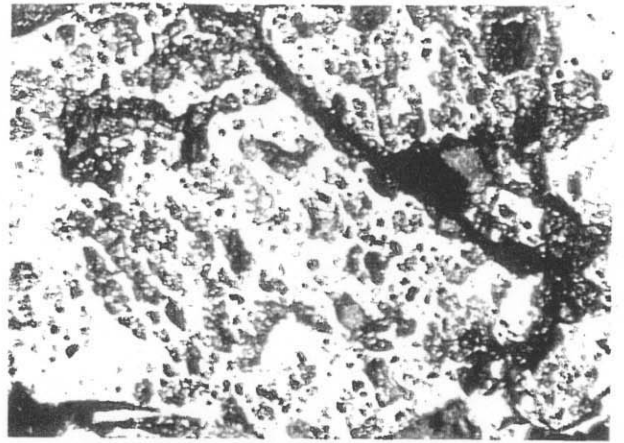
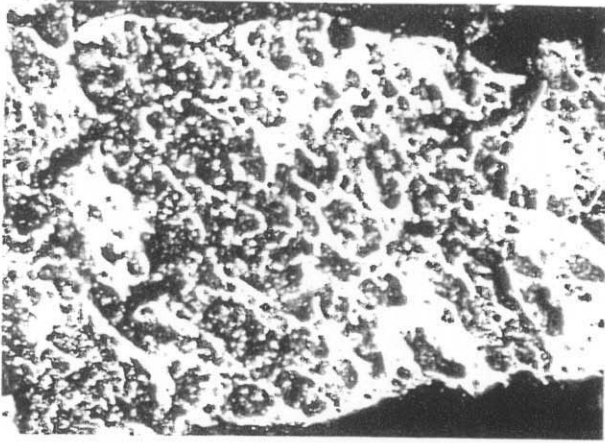


open nicol

crossed nicols

Ph-14 Micrograph of Dry Distillation Product (550°C)



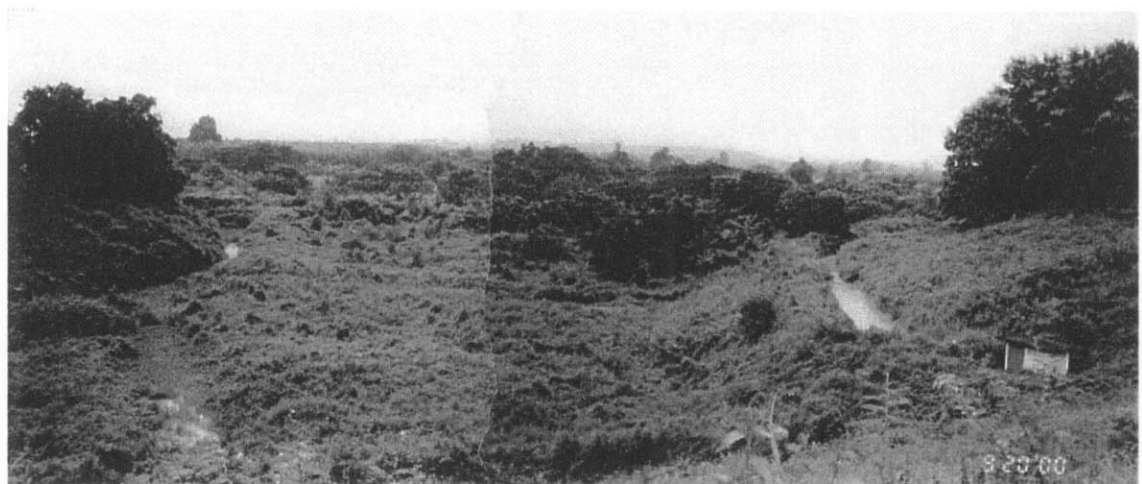
open nicol

crossed nicols

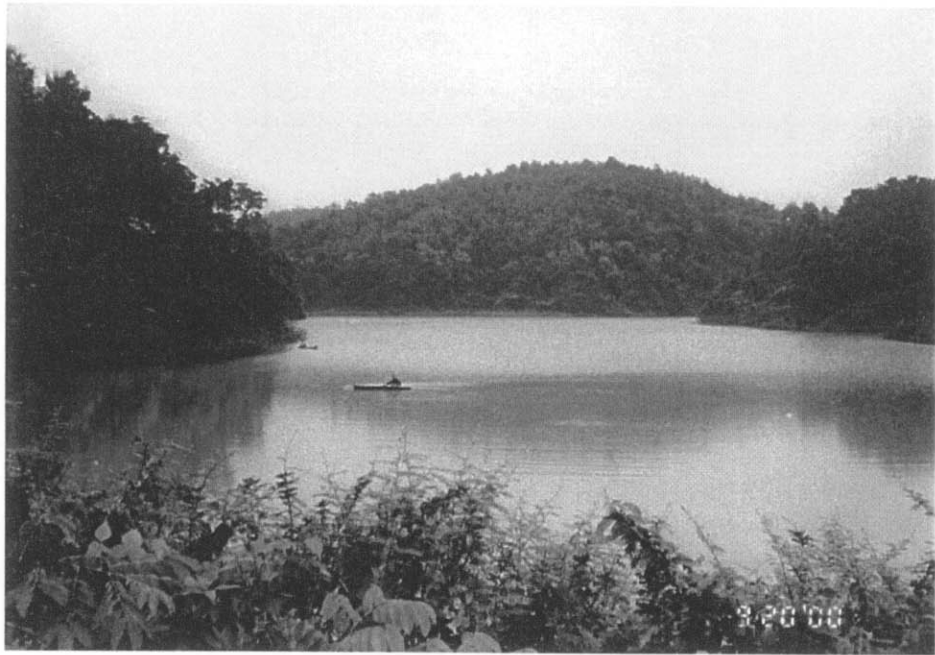
Ph-15 Micrograph of Dry Distillation Product (650°C)



Ph-16 Rice Field in the Proposed Mining Area



Ph-17 Proposed Mining Area and Irrigation Channels



Ph-18 Irrigation Dam



Ph-19 Creek in the Proposed Mining Area