

**Table 6.8.1 Plan of Operation of Action Plan**

No	Activity	Expected Results	Target Persons/Beneficiaries	Person in Charge	Implementer	Start line	Implementation Schedule										Remarks		
							1	2	3	4	5	6	7	8	9	10			
1	Public Awareness of Government Policy amongst Government Officials	1. Regional government officials can formulate their action plan and required regulation, coordination for irrigation management turnover 2. Government Officials are true civil servant and facilitator	Central and Regional government officials	Central - Kiproswal Province: BAPPEDA, Pengasin, Pertanian Kabupaten: BAPPEDA, Pengasin, Pertanian	PMU Consultants Field Activities: PTGA	Completion of WATSAL	■	■	■	■									
2	Inventory formulation & updating	1. Clarify the present condition of irrigation schemes/WUA for the monitoring to formulate policy and national asset management	All irrigation schemes and WUA including WUAF and WUA	Central - DWRM of DGBR, Kiproswal Province: Dinas Pengasin Kabupaten: Dinas Pengasin & Pertanian	PMU Consultants at central level Field Activities: local consultants and irrigation Supervisors and PPL	Immediately	■	■	■	■	■	■	■	■	■	■	■	■	10. Large & Small Scale Scheme Inventory 11. National Asset Database 12. WUA Inventory 13. Irrigation System Assessment 14. Irrigation Scheme Rehabilitation Proposal Competition
3	Public awareness and capacity building at WUA level	Farmers can realize government policy of irrigation management turnover program at field level	All WUA/Farmers	Central - DWRM of DGBR, Kiproswal Province: Dinas Pengasin, PTGA Kabupaten: Dinas Pengasin & COs	Kabupaten: Dinas Pengasin, WUA Coordinated Support Forum and COs Farmers	Completion of WATSAL	■	■	■	■	■	■	■	■	■	■	■	■	
4	Training WUA leaders	Ability of trained WUA/ leaders to organize participatory action planning and implementation locally with their respective WUA/ members for sustainable farming irrigation	All WUA/Farmers	Central - DWRM of DGBR, Kiproswal Province & Kabupaten: Dinas Pengasin and WUA Coordinated Support Forum	Kabupaten: Dinas Pengasin, WUA Coordinated Support Forum and COs Farmers	Completion of WATSAL	■	■	■	■	■	■	■	■	■	■	■	■	
5	Start-up Assistance	To produce a more equitable condition of development at the field. To improve WUA capability and irrigation.	All WUA/Farmers not yet functioning	Central - DWRM of DGBR, Kiproswal and Bangda of MOHA Province & Kabupaten: Dinas Pengasin and WUA Coordinated Support Forum	Kabupaten: Dinas Pengasin, WUA Coordinated Support Forum and COs Farmers	Completion of WATSAL	■	■	■	■	■	■	■	■	■	■	■	■	
6	Formation/Reformation of WUA and WUAF	Democrate WUA re-formation to obtain basic component of irrigation management turnover	All WUA/Farmers not effectively operated	Central - DWRM of DGBR, Kiproswal Province & Kabupaten: Dinas Pengasin and WUA Coordinated Support Forum	Kabupaten: Dinas Pengasin, WUA Coordinated Support Forum and COs Farmers	Completion of WATSAL	■	■	■	■	■	■	■	■	■	■	■	■	
7	Kabupaten Irrigation Improvement Fund	Efficient operating irrigation systems under the maximized fund available in Kabupaten government	All stakeholders of irrigation schemes including Government	Central - DWRM of DGBR, Kiproswal and Bangda of MOHA Province & Kabupaten: Dinas Pengasin and WUA Coordinated Support Forum	Kabupaten: Dinas Pengasin and WUA Coordinated Support Forum & Consultants WUAFs and farmers	Completion of WATSAL	■	■	■	■	■	■	■	■	■	■	■	■	
8	Improved O&M and Joint Management	Maximum number of fully functional WUA under the collaboration between WUA/banans and Government	All stakeholders of irrigation schemes including Government	Central - DWRM of DGBR, Kiproswal and BAPPENAG Province & Kabupaten: Dinas Pengasin and WUA Coordinated Support Forum	Kabupaten: Dinas Pengasin, WUAFs and farmers,	Completion of WATSAL	■	■	■	■	■	■	■	■	■	■	■	■	
9	Collection ISF and Government Support	To maximize the number of WUA which are capable of preparing realistic O&M budget, of collecting the fee from the water users, and disbursing the funds efficiently. The net result should be reduced Government subsidies and improved irrigation systems.	All stakeholders of irrigation schemes including Government	Central - DWRM and DPs of DGBR, Kiproswal and BANGDA of MOHA Province & Kabupaten: Dinas Pengasin and WUA Coordinated Support Forum	Kabupaten: Dinas Pengasin, WUAFs and farmers,	Completion of WATSAL	■	■	■	■	■	■	■	■	■	■	■	■	
10	Rehabilitation of Irrigation System	Irrigated areas brought back into good working condition to maximize returns to investment in rehabilitation.	All farmers and WUA under the existing deteriorated irrigation schemes	Central - DWRM & DPs of DGBR, Kiproswal & BAPPENAG Province & Kabupaten: Dinas Pengasin and WUA Coordinated Support Forum	Kabupaten: Dinas Pengasin, WUAFs and farmers, and contractors	Completion of WATSAL	■	■	■	■	■	■	■	■	■	■	■	■	
11	Monitoring & Evaluation	Monitor and evaluate the progress of Action Plan and irrigation management turnover and provide the appropriate counter measures if they are required	All stakeholders of irrigation schemes including Government	Central - DWRM of DGBR, Kiproswal and BAPPENAG Province & Kabupaten: BAPPEDA & Dinas Pengasin	PMU Consultants, Kiproswal and BAPPENAG Provinsi & Kabupaten: Kiproswal & BAPPEDA	Completion of WATSAL	■	■	■	■	■	■	■	■	■	■	■	■	
12	Agriculture enhancement plan	Farmers' confidence and their own initiative could be the most important requirements for the success of any farmer activities on a sustainable basis. Then agricultural income increase.	Farmers	Central - Center of Agricultural Extension, MDA Province & Kabupaten: BAPPEDA & Dinas Pertanian	Extension system formation by Consultants at central level Extension service by PPL and Farmers	Immediately	■	■	■	■	■	■	■	■	■	■	■	■	

■ Field Kabupaten implementation  
 ■ Preparatory stage  
 ■ Implementation in all provinces in Indonesia

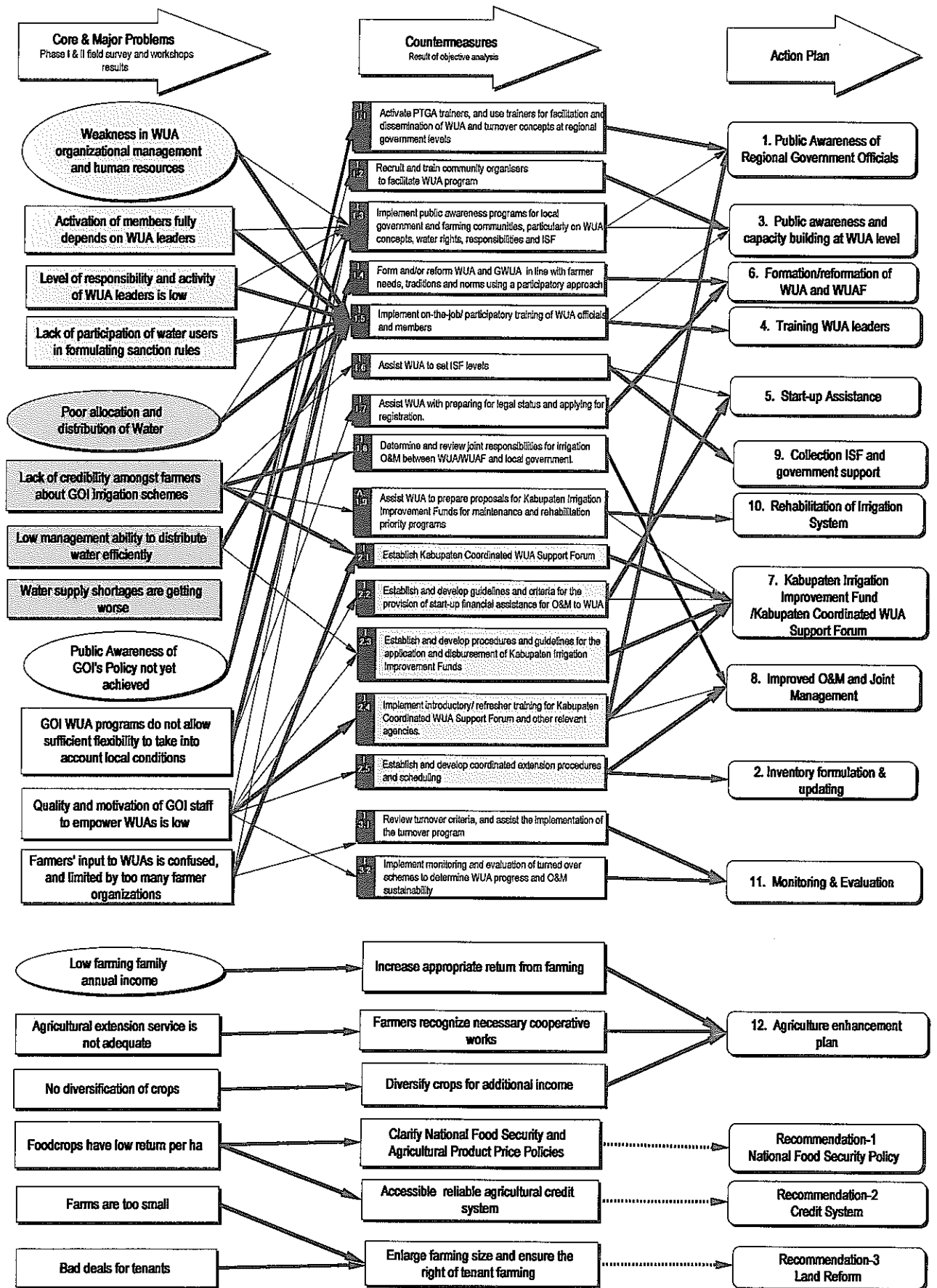


Fig. 6.2.1 Major Problems, Countermeasures and Action Plan

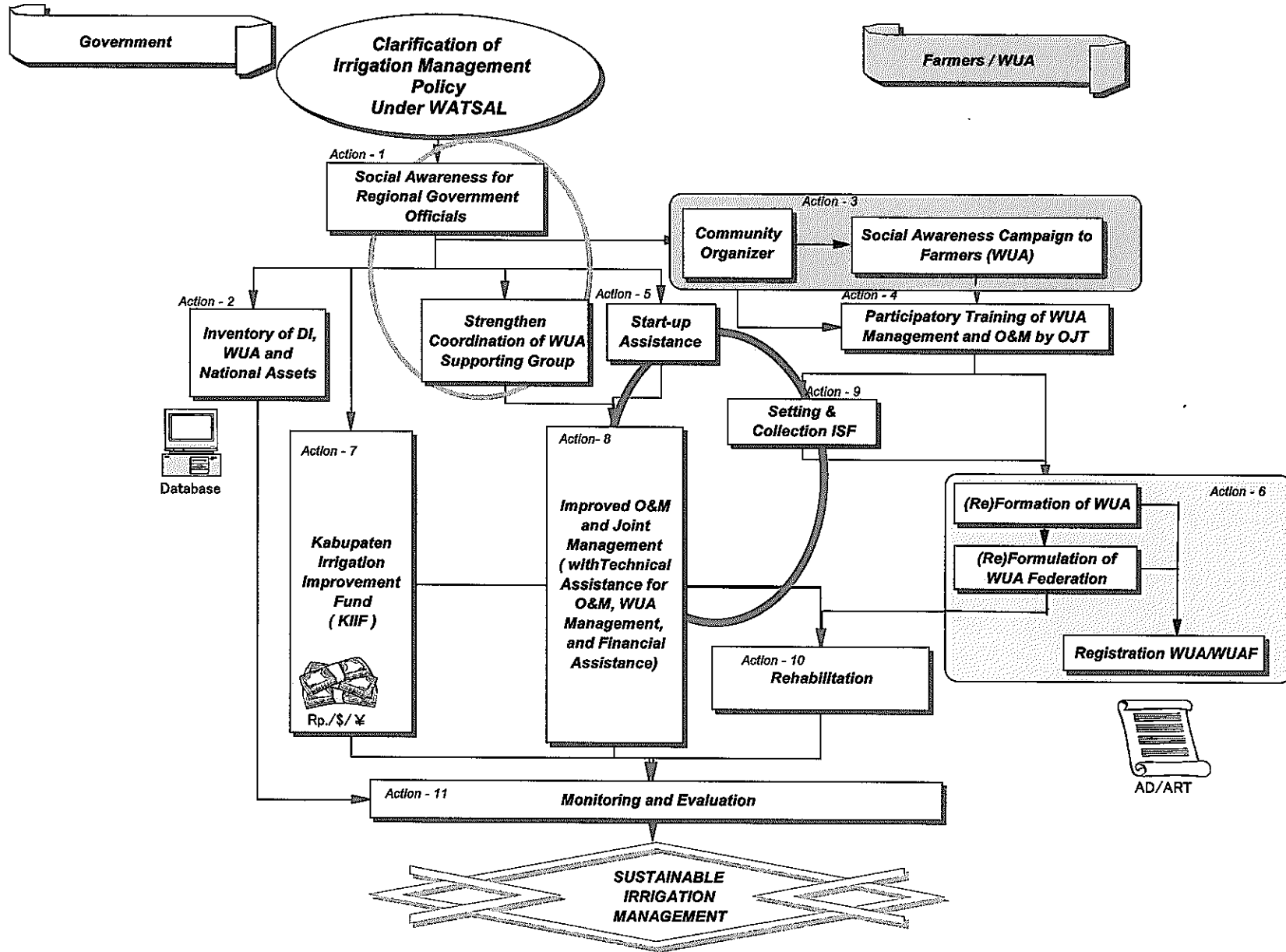
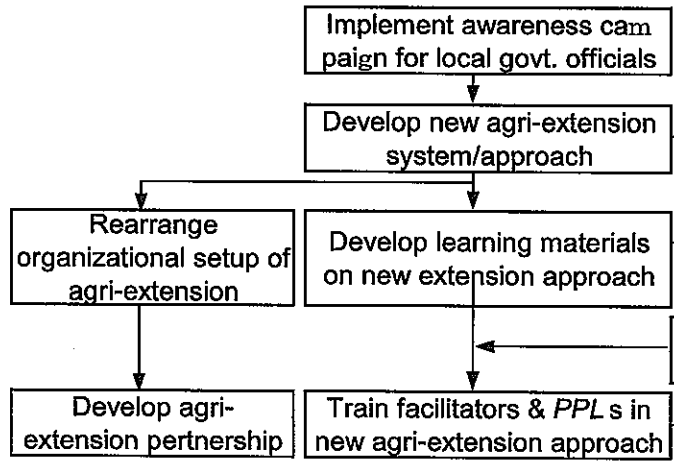


Fig. 6.3.1 Flow of the Action Plan Program

**Kab./Prov. Governments**

**<Reinforcement of Agri-Extension System/Approach>**



**Farmers**

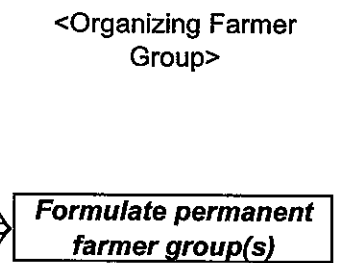
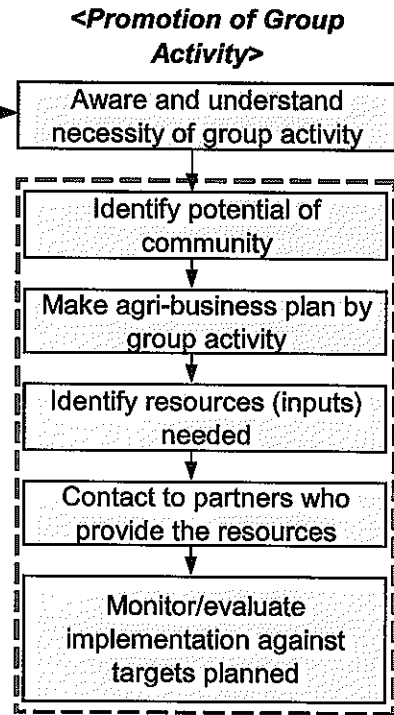
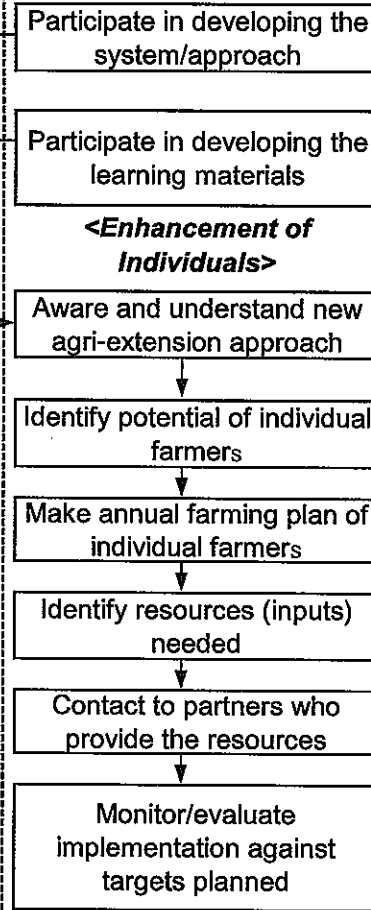


Fig. 6.6.1 Outline of the Enhancement Plan of Agriculture