

1 . Minutes of Meetings (M/M)

MINUTES OF MEETINGS
BETWEEN JAPANESE MANAGEMENT CONSULTATION TEAM
AND AUTHORITIES CONCERNED OF
THE GOVERNMENT OF LAO PEOPLE'S DEMOCRATIC REPUBLIC
ON JAPANESE TECHNICAL COOPERATION FOR
THE PROJECT ON ELECTRIC POWER TECHNICAL STANDARD ESTABLISHMENT
IN LAO PEOPLE'S DEMOCRATIC REPUBLIC

The Japanese Management Consultation Team (hereinafter referred to as "the Team") organized by Japan International Cooperation Agency (hereinafter referred to as "JICA") and headed by Mr. Takanori TANAKA, visited Lao People's Democratic Republic from August 28 to September 5, 2001, in order to review and evaluate jointly the activities being conducted under the Project on Electric Power Technical Standard Establishment in Lao People's Democratic Republic (hereinafter referred to as "the Project") and to formulate further development of the Project.


During its stay in Lao People's Democratic Republic, the Team had a series of discussions and exchanged views with the authorities concerned of the Government of Lao People's Democratic Republic (hereinafter referred to as "the Laotian side") and attended the Joint Coordinating Committee (hereinafter referred to as "the JCC") for successful implementation of the Project.

As a result of the discussions as well as the JCC, the Team and the Laotian side agreed upon the matters referred to the document attached hereto.

Vientiane, September 4, 2001



Mr. Takanori TANAKA
Leader
Management Consultation Team
Japan International Cooperation Agency
Japan



Mr. Houmphone BULYAPHOL
Director General
Department of Electricity
Ministry of Industry and Handicrafts
Lao People's Democratic Republic

ATTACHED DOCUMENT

1. REVIEW OF THE PROJECT ACTIVITIES FROM MAY 2000 TO AUGUST 2001

1.1 INPUT BY THE JAPANESE SIDE

(1) Dispatch of Japanese Experts

The list of Japanese Experts dispatched to date by the Japanese side is shown in ANNEX 1.

(2) Training of Laotian Counterpart Personnel in Japan

The training of Laotian Counterpart Personnel in Japan is shown in ANNEX 2.

(3) Provision of Equipment and Materials

The list of equipment and materials provided by the Japanese side is shown in ANNEX 3.

1.2 INPUT BY THE LAOTIAN SIDE

(1) Allocation of Personnel

The Laotian side allocated the counterpart personnel as shown in ANNEX 4.

(2) Allocation of Budget

The Laotian side budget allocation is shown in ANNEX 5.

(3) Provision of Land, Buildings and Facilities

The Laotian side provided land, buildings and facilities to date as shown in ANNEX 6.

1.3 SUMMARY OF ACTIVITIES

(1) Framework of the Project

The framework of the Project is shown in ANNEX 7.

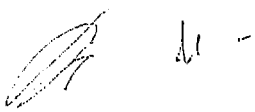
(2) Work Plan

a. Hydropower Civil Engineering

Work Plan was achieved as planned as shown in ANNEX 7-1.

b. Hydropower Plant / Substation

Work plan was achieved as planned as shown in ANNEX 7-2.



c. Transmission

Work plan was achieved as planned as shown in ANNEX 7-3.

d. Distribution

Work plan was achieved as planned as shown in ANNEX 7-4.

2. RECOGNITION OF THE MID-TERM EVALUATION REPORT

Both sides recognized the mid-term evaluation report on the result of joint evaluation.

3. REVIEW OF MASTER PLAN OF THE PROJECT, PROJECT DESIGN MATRIX (PDM), TENTATIVE SCHEDULE OF IMPLEMENTATION (TSI), PLAN OF OPERATIONS (PO)

3.1 MASTER PLAN

Both sides agreed that the Master Plan of the Project as shown in ANNEX 8 need not be modified.

3.2 PROJECT DESIGN MATRIX (PDM)

Both sides agreed that the Project Design Matrix (PDM) as shown in ANNEX 9 need not be modified.

3.3 TENTATIVE SCHEDULE OF IMPLEMENTATION (TSI)

Both sides agreed that the Tentative Schedule of Implementation (TSI) as shown in ANNEX 10 need not be modified.

3.4 PLAN OF OPERATIONS (PO)

Both sides agreed that the Plan of Operations (PO) as shown in ANNEX 11 need not be modified.

4. DISCUSSION ON WORK PLAN UNTIL THE TERMINATION OF THE PROJECT

4.1 RESIDUAL PERIOD IN FISCAL YEAR 2001.

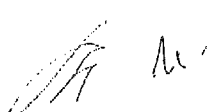
(1) Input by the Japanese Side

a. Dispatch of Japanese Experts

The dispatch of Japanese Experts is shown in ANNEX 12.

b. Training of Laotian Counterpart Personnel in Japan

The training of Laotian Counterpart Personnel in Japan is shown in ANNEX 13.



(2) Input by the Laotian Side

a. Allocation of Personnel

The allocation of counterpart personnel by the Laotian side is shown in ANNEX 14.

b. Allocation of Budget

The allocation of budget by the Laotian side is shown in ANNEX 15.

c. Provision of Land, Buildings and Facilities

The provided land, buildings and facilities by the Laotian side are shown in ANNEX 6.

4.2 FISCAL YEAR 2002 AND UNTIL THE TERMINATION OF THE PROJECT

Both sides discussed the plan of inputs by the each side and the frame of work plan. However, the plan of inputs and the frame of work plan are tentative and both sides confirmed that these are subject to change according to the various unexpected changes in conditions or factors.

(1) Frame of Work Plan

The frame of work plan is shown in ANNEX 16.

(2) Input by the Japanese Side

a. Dispatch of Japanese Experts

Both sides agreed that Chief Advisor and Coordinator will be dispatched until the termination of the Project, however, four (4) of the technical Long-term Experts will be attached to the Project by July 4, 2002. The Laotian side requested to dispatch seven (7) Short-term Experts. The dispatch of Japanese Experts is shown in ANNEX 17.

b. Training of Laotian Counterpart Personnel in Japan

The training of Laotian Counterpart Personnel in Japan is shown in ANNEX 18.

c. Provision of Equipment and Materials

The Laotian side requested to provide additional IEC books and reference materials and measuring instruments necessary for practical understanding on the contents of the Lao Electric Power Technical Standard.

(3) Input by the Laotian Side

a. Allocation of Personnel

The allocation of counterpart personnel by the Laotian side is shown in ANNEX 19

b. Provision of Land, Buildings and Facilities

The provided land, buildings and facilities by the Laotian side are shown in ANNEX 6.

5. OTHERS

5.1 JOINT FINAL EVALUATION

The Team explained that the joint final evaluation will be conducted 6 months before the termination of the Project and verifiable indicators as detailed in the Project Design Matrix (PDM) should be adopted for the evaluation.

5.2 ATTENDANCE OF THE DISCUSSIONS

The list of participants in all the meetings is shown in ANNEX 20.

5.3 SAFETY AND QUALITY PROBLEMS OF ELECTRIC EQUIPMENT / APPLIANCES

The Laotian side requested to provide an assistance to solve the current safety and quality problems of electric equipment / appliances such as micro hydropower generator and user's site electrical appliances. However, both sides understood that these problems will be settled to a certain extent in the implementation stage of the Lao Electric Power Technical Standard.

Au

ANNEX LIST

- ANNEX 1 Dispatch of Japanese Experts from May 2000 to August 2001
- ANNEX 2 Training of Laotian Counterpart Personnel in Japan from May 2000 to August 2001
- ANNEX 3 Equipment and Materials Provided by the Japanese Side from May 2000 to August 2001
- ANNEX 4 Allocation of Counterpart Personnel by the Laotian Side from May 2000 to August 2001
- ANNEX 5 Allocation of Budget by the Laotian Side from May 2000 to August 2001
- ANNEX 6 Provision of Buildings and Facilities by the Laotian Side
- ANNEX 7 Framework of the Project
- ANNEX 7-1 Work Plan of Hydropower Civil Engineering
- ANNEX 7-2 Work Plan of Hydropower Plant / Substation
- ANNEX 7-3 Work Plan of Transmission
- ANNEX 7-4 Work Plan of Distribution
- ANNEX 8 Master Plan of the Project
- ANNEX 9 Project Design Matrix (PDM)
- ANNEX 10 Tentative Schedule of Implementation (TSI)
- ANNEX 11 Plan of Operations (PO)
- ANNEX 12 Dispatch of Japanese Experts in Residual Period in Fiscal Year 2001
- ANNEX 13 Training of Laotian Counterpart Personnel in Japan in Residual Period in Fiscal Year 2001
- ANNEX 14 Allocation of Counterpart Personnel by the Laotian Side in Residual Period in Fiscal Year 2001
- ANNEX 15 Allocation of Budget by the Laotian Side in Residual Period in Fiscal Year 2001
- ANNEX 16 Frame of Work Plan in Fiscal Year 2002 and until the Termination of the Project
- ANNEX 17 Dispatch of Japanese Experts in Fiscal Year 2002 and until the Termination of the Project
- ANNEX 18 Training of Laotian Counterpart Personnel in Japan in Fiscal Year 2002 and until the Termination of the Project
- ANNEX 19 Allocation of Counterpart Personnel by the Laotian Side in Fiscal Year 2002 and until the Termination of the Project
- ANNEX 20 List of Attendance

JK W -

1) Long-term Experts

No.	Name	Title	Period
1	Dr. Shigenori KURODA	Chief Advisor	June 8, 2000 - Aug. 2001
2	Mr. Masaaki DOI	Coordinator	May 8, 2000 - Aug. 2001
3	Mr. Takashi TADA	Expert in Hydropower Civil Engineering	July 5, 2000 - Aug. 2001
4	Mr. Hiroaki NISHIGAMI	Expert in Hydropower Plant/Substation	July 5, 2000 - Aug. 2001
5	Mr. Takahiro ISHIMARU	Expert in Transmission	July 5, 2000 - Aug. 2001
6	Mr. Munenori OTA	Expert in Distribution	July 5, 2000 - Aug. 2001

2) Short-term Experts

No.	Name	Post Title	Field	Period	Fiscal Y
1	Mr. Kazutoshi KUBO	Analysis of the survey results on implemented facilities	Hydropower Plant/Substation	Feb. 11, 2000 - Mar. 10, 2000	2000
2	Mr. Hiroyuki DOI	Foreign countries technical standards and analysis study	Hydropower Civil Engineering	Feb. 18, 2000 - Mar. 18, 2000	2000
3	Mr. Hajime SAITO	Distribution technology for ensure security of general public	Distribution	Feb. 19, 2000 - Mar. 2, 2000	2000
4	Mr. Koichi ARAO	Underground transmission line	Transmission	Feb. 27, 2000 - Mar. 24, 2000	2000
5	Mr. Setsuo HARADA	International technical standard	Keynote speech at the Interim Seminar	July 22, 2001 - July 28, 2001	2001

ANNEX 2: Training of Laotian Counterpart Personnel in Japan from May 2000 to August 2001

September 4, 2001

No.	C/P Name	Position of Project	Title	Training Place in Japan	Period	Fiscal Y
1	Mr. Houmphone BULYAPHOL	Project Director	Director General of Department of Electricity, MIH	Over Japan	March 17, 2000 - March 31, 2000	2000
2	Mr. Voradeth PHONEKEO	Fulltime Counterpart; Hydropower Civil Engineering	Civil Engineer, DOE, MIH	Kansai Electric Power, Co., Ltd.	March 20, 2001 - April 24, 2001	2000
3	Mr. Sisoukan SAYARATH	Fulltime Counterpart; Hydropower Plant/Substation	Division Chief of DOE, MIH	Kansai Electric Power, Co., Ltd.	March 20, 2001 - April 24, 2001	2000

[Handwritten signature]

(1) Machinery and Equipment

Serial No.	Jr-Y	M Arr.	Description	Amount K Yen	Amount US\$	Amount Kip	Remarks
001	2000	05	Printer, Canon BJC-F850	50.0			Doi
002	2000	05	Personal Computer, DYNABOOK 2710	369.0			
003	2000	06	Fax Telephone, Panasonic KX-FT33 S/N ODBRA012655		340.00		
004	2000	06	LEICO Desk LD714WL for expert		214.00		Kuroda
005	2000	06	LEICO Desk LD714WL for expert		214.00		Doi
006	2000	07	HP Desk Jet 640C S/N TH06T931D5		200.00		
007	2000	07	HP Desk Jet 640C S/N TH06T931GO		200.00		
008	2000	07	Personal Computer, FMV-DESKPOWER C4/66L	285.0			Kuroda
009	2000	07	Software, MS-Power Point 2000	26.8			
010	2000	07	Software, Encarta Sougoudaihyakka	27.3			
011	2000	07	Software, HP Basic V7.1	148.0			
012	2000	07	GRIB Card, PCI	61.0			
013	2000	07	CD-ROM Drive, CDRW-S8432/USP	48.5			
014	2000	07	Canon, BJ Printer, BJM70	38.0			
015	2000	07	Hi Voltage Checker	28.8			
016	2000	07	Resistance Tester, PDR-2000G	35.8			
017	2000	07	Personal Computer, Satellite Pro 4260	345.0			Ishimaru
018	2000	07	Memory Module 64MG	51.0			
019	2000	07	Software, MS-Office 2000 Pro	63.5			
020	2000	07	Software, Adobe Acrobat 4.0J	30.5			
021	2000	07	Altimeter 3262	24.0			Nishigami
022	2000	07	Altimeter 3262	24.0			
023	2000	07	Powerful 12ch Parallel Receiver GP33EX	44.0			
024	2000	07	Binoculars, Shuttle II 10x25CF-WP	29.0			
025	2000	07	Measuring Pole, AS15m	85.0			
026	2000	07	Digital Multimeter	28.9			
027	2000	07	Personal Computer, Satellite Pro 4260	34.5			
028	2000	07	Memory Module 64MG	54.0			
029	2000	07	Software, MS-Office 2000 Pro	63.5			
030	2000	07	Software, Logo Vista Xpro	125.0			

Handwritten signature and initials.

Serial No.	JFY	M Arr.	Description	Amount K Yen	Amount US\$	Amount Kip	Remarks
031	2000	07	Personal Computer, Satellite Pro 4260	345.0			Tada
032	2000	07	Memory Module 64MG	51.0			
033	2000	07	Software, MS-Office 2000 Pro	63.5			
034	2000	07	Specific Earth Resistance Tester, 3244 00	220.0			Ota
035	2000	07	Personal Computer, Satellite Pro 4260	345.0			
036	2000	07	Memory Module 64MG	51.0			
037	2000	07	Software, MS-Office 2000 Pro	63.5			
038	2000	07	MPEG Encoder Box	32.0			
039	2000	07	Compact Disk, Hydro-CD 5th edition	49.5			Ishimaru
040	2000	07	LEEEO Desk 1.D714WL for expert		214.00		Tada
041	2000	07	LEEEO Desk 1.D714WL for expert		214.00		Nishigami
042	2000	07	LEEEO Desk 1.D714WL for expert		214.00		Ishimaru
043	2000	07	LEEEO Desk 1.D714WL for expert		214.00		Ota
044	2000	07	Rattan sofa set		530.00		
045	2000	07	Mobile Phone 020-520749		515.00		Kuroda
046	2000	07	Mobile Phone 020-520750		515.00		Doi
047	2000	07	Mobile Phone 020-520751		515.00		Tada
048	2000	07	Mobile Phone 020-520752		515.00		Nishigami
049	2000	07	Mobile Phone 020-520753		515.00		Ishimaru
050	2000	07	Mobile Phone 020-520754		515.00		Ota
051	2000	07	Digital Measure I-N	26.8			Ishimaru
052	2000	07	Electric Field Meter EFM-309	345.0			
053	2000	07	LAN system with UPS and accessories in STEP Room		4,292.00		Laovieng Office Automation
054	2000	07	Telephone system in STEP Room			13,352,075	ETL
055	2000	12	PC Projector, Toshiba 771 LCS Projector		8,495.00		S/N: 77692510
056	2000	12	OHP, 3M Overhead projector Model 2770		895.00		S/N: 842861
057	2000	12	Electric White Board-Large, Panasonic KX-B635G		1,995.00		S/N: 562ZLA0107
058	2000	12	Electric White Board-Small, Panasonic KX-B535G		1,795.00		S/N: 5570XLA0309
059	2000	12	Television Set, Sony KV-XF25M50 25"		595.00		S/N: 1009028
060	2000	12	Television set, Sony KV-XF25M50 25"		595.00		S/N: 1009137

Handwritten mark: a stylized signature or initials.

Serial No.	JFY	M Arr.	Description	Amount K Yen	Amount US\$	Amount Kip	Remarks
061	2000	12	Video Deck, Sony SLV-ED95MN Multisystem		295.00		S/N: 01108051
062	2000	12	Video Deck, Sony SLV-ED95MN Multisystem		295.00		S/N: 0110864
063	2000	12	B/W Copy Machine, Ricoh FT 4422		1,895.00		S/N: H0400364
064	2000	12	Document Feeder, DF-57; Sorter CS-110, 10bins		2,650.00		S/N:
065	2000	12	B/W Copy Machine, Ricoh FT 4422		1,895.00		S/N: H0400385
066	2000	12	Document Feeder, DF-57; Sorter CS-110, 10bins		2,650.00		S/N
067	2000	12	Still Camera, Olympus MU Zoom 140 VF		295.00		S/N: 5033212472
068	2000	12	Fax Machine, Panafax UF-770		1,295.00		S/N: 01990700045
069	2000	12	PC, Compaq Armada E500 (All in One)		3,500.00		S/N: 1J0BFMZ1F101
070	2000	12	PC, Compaq Armada E500 (All in One)		3,500.00		S/N: 1J0BFMZ1F105
071	2000	12	PC, Compaq Armada E500 (All in One)		3,500.00		S/N: 1J0BFMZ1F10B
072	2000	12	PC, Compaq Armada E500 (All in One)		3,500.00		S/N: 1J0BFMZ1F10F
073	2000	12	PC, Compaq Armada E500 (All in One)		3,500.00		S/N: 1J0BMZ1H00V
074	2000	12	PC, Compaq Armada E500 (All in One)		3,500.00		S/N: 3J0BFMZ1G07H
075	2000	12	PC, Compaq Armada E500 (All in One)		3,500.00		S/N: 3J0BFMZ1G12G
076	2000	12	PC, Compaq Armada E300 (Ultraportable)		4,000.00		S/N: 1J0AFM732607
077	2000	12	PC, Compaq Armada E300 (Ultraportable)		4,000.00		S/N: 1J0AFM73260B
078	2000	12	PC, Compaq Armada E300 (Ultraportable)		4,000.00		S/N: 1J0AFM73262W
079	2000	12	HP Laser Jet 5000N		2,600.00		S/N: SGT3092745
080	2000	12	HP Laser Jet 5000N		2,600.00		S/N: SGT3092748
081	2000	12	Color Printer, Canon BJC-6500		550.00		S/N: EYR41710
082	2000	12	Mobile Printer, Canon BJC-85		320.00		S/N: XDW35233
083	2000	12	Mobile Printer, Canon BJC-85		320.00		S/N: XDW35236
084	2000	12	Mobile Printer, Canon BJC-85		320.00		S/N: XDW35237
085	2000	12	Digital Camera, Kodak Digital Camera DC5000		800.00		S/N: KJCAA02202774
086	2000	12	Digital Camera, Kodak Digital Camera DC5000		800.00		S/N: KJCAA02202776
087	2000	12	Digital Camera, Kodak Digital Camera DC5000		800.00		S/N: KJCAA03101704
088	2000	12	Digital Camera, Kodak Digital Camera DC5000		800.00		S/N: KJCAA03200023
089	2000	12	Digital Video Camera, Sony DCR-PC100E		2,050.00		S/N: 174953
090	2000	12	Digital Video Camera, Sony DCR-PC100E		2,050.00		S/N: 175041

Handwritten mark: a stylized signature or initials.

Serial No.	JFY	M Arr.	Description	Amount K Yen	Amount US\$	Amount Kip	Remarks
091	2000	12	Image Scanner, EPSON Expression 1640XL		2,700.00		S/N; CKC0000093
092	2000	12	Removable Drive, Fujitsu MO Drive 640 MB External		520.00		S/N; 05006737
093	2000	12	Removable Drive, Fujitsu MO Drive 640 MB External		520.00		S/N; 05006738
094	2000	12	Removable Drive, Fujitsu MO Drive 640 MB External		520.00		S/N; 05006739
095	2000	12	Removable Drive MO, Fujitsu MO Drive 640 MB External		520.00		S/N; 05006740
096	2000	12	Removable Drive CD/R/RW, HP CD Writer Plus 8230e USB		375.00		S/N; SG0306S9YQ
097	2000	12	Removable Drive CD/R/RW, HP CD Writer Plus 8230e USB		375.00		S/N; SG040WL4P
098	2000	1	Ravel writer TEPR4		266.00		
099	2000	2	Ravel writer TEPR4		210.00		
100	2000	3	Telephone Receiver KX-T 7330, KX-T 2500TH		675.00		
101	2000	3	TOYOTA Land Cruiser, Plate No.0588		30,700.00		
102	2000	3	TOYOTA Land Cruiser, Plate No.0589		30,700.00		
103	2001	4	Books and reference materials (total 290 pcs.)	3,406.0			As per attached sheets
104	2001	4	Equipment for DOE Library		1,626.00		

(2) Books and reference materials

JFY	M Arr.	Description	Amount K Yen	Amount US\$	Amount Kip	Remarks
2001	4	Books and reference materials	3,751.0			290 pcs.

ANNEX 4: Allocation of Counterpart Personnel by the Laotian Side from May 2000 to August 2001

List of Laotian Counterpart Personnel

September 4, 2001

No.	Title	Field	Name	From	Period
1	Project Director		Mr. Houmphone BULYAPHOL	DOE	May 2000-Aug. 2001
2	Project Manager		Dr. Somboune MANOLOM	DOE	May 2000-Aug. 2001
3	Fulltime	Hydropower Civil Engineering	Mr. Voradeth PHONEKEO	DOE	May 2000-Aug. 2001
4	Part time	- do. -	Mr. Phonsavanh PHIMMASONE	DOE	May 2000-Aug. 2001
5	Part time	- do. -	Mr. Phoukong SENGVLAY	DOE	May 2000-Aug. 2001
6	Part time	- do. -	Mr. Vantheva BOUKHASITH	EDL	May 2000-Aug. 2001
7	Fulltime	Hydropower Plant/ Substation	Mr. Sisoukan SAYARATH	DOE	May 2000-Aug. 2001
8	Part time	- do. -	Mr. Viengsay CHANTHA	DOE	May 2000-Aug. 2001
9	Part time	- do. -	Mr. Khampha SIRIVONG	EDL	May 2000-Aug. 2001
10	Part time	- do. -	Mr. Douangpy SOUVANNACHITH	EDL	May 2000-Aug. 2001
11	Fulltime	Transmission	Mr. Pethsavanh RATTANATHONGXAY	DOE	May 2000-Aug. 2001
12	Part time	- do. -	Mr. Thongphanh SAKOUNSOUK	DOE	May 2000-Aug. 2001
13	Part time	- do. -	Mr. Vithoun LABANDITH	DOE	May 2000-Aug. 2001
14	Part time	- do. -	Mr. Sengkham THANIVONG	EDL	May 2000-Aug. 2001
15	Fulltime	Distribution	Mr. Houmphan VOGPHACHAN	DOE	May 2000-Aug. 2001
16	Fulltime	- do. -	Mr. Vanhdy VILAYSANE	DOE	May 2000-Aug. 2001
17	Part time	- do. -	Mr. Thammanoun NAKHAVITH	DOE	May 2000-Aug. 2001
18	Part time	- do. -	Mr. Na NAOPHAKDY	EDL	May 2000-Aug. 2001
19	Part time	- do. -	Mr. Mixay CHITTARATH	EDL	May 2000-Aug. 2001
20	Part time	- do. -	Mr. Maypheth PHONPHILA	EDL	May 2000-Aug. 2001

M u -

ANNEX 5: Allocation of Budget by the Laotian Side from May 2000 to August 2001

1. Budget for the Project

No.	Fiscal Year	Amount in Kips	Remarks
1	1999-2000 (Oct.1999 – Spt.2000)	10,552,616	This budget is only for the project management, but it won't be covered fee of Counterpart staff.
2	2000-2001 (Oct.2000 – Sep.2001)	22,000,000	ditto

Exchange rate: 1USD=7500 Kips (1999-2000)
1USD=9300 Kips (Mid 2001 to date)

2. Average salary of Government Officer (for Counterpart staff)

1	Average salary (Kips/Month)	18 Persons (Kips/Month)	18 Persons (Kips/Year)
2	200,000	200,000 x 18 =3,600,000.	3,600,000. x12= 43,200,000.

3. Annual budget of DOE from 1997 to 2001

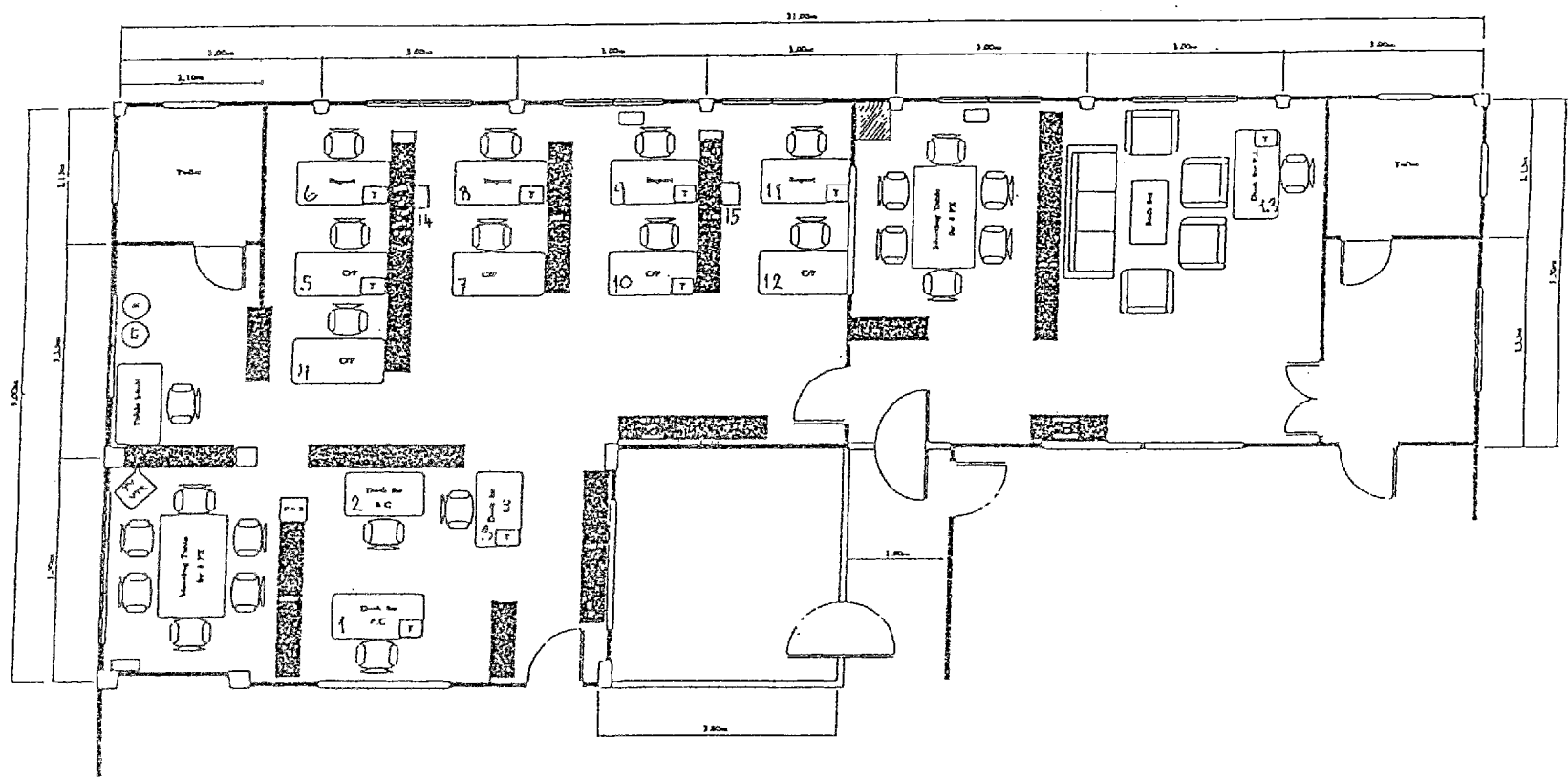
No.	Fiscal Year	Budget (Kips)	Remark
1	1997-1998 (Oct.1997 – Sep.1998)	20,000,000	
2	1998-1999 (Oct.1998 – Set.1000)	50,000,000	
3	1999-2000 (Oct.1999 – Sep.2000)	150,000,000	
4	2000-2001 (Oct.2000 – Sep.2001)	250,000,000	

Handwritten signature or initials.

11/14

ANNEX 6: Provision of Buildings and Facilities by the Laotian Side

Layout of STEP Room
In DOE, MIH



ANNEX 7: Framework of The Project

As of September 4, 2001

Project term	1 st Year				2 nd Year				3 rd Year				
Japanese fiscal year	2000				2001				2002				2003
Quarter	1	2	3	4	1	2	3	4	1	2	3	4	1
Calendar	08.05-30.06.00	01.07-30.09.00	01.10-31.12.00	01.01-31.03.01	01.04-30.06.01	01.07-31.09.01	01.10-31.12.01	01.01-31.03.02	01.04-30.06.02	01.07-30.09.02	01.10-31.12.02	01.01-31.03.03	01.04-30.04.03
Activities Based on P.O													
1. Necessary information for LEPTS will be collected.		→								▼			
2. Necessary technique for establishing/maintaining LEPTS will be mastered.				→									▼
3. Necessary contents of LEPTS will be grasped and LEPTS draft will be made.				→						▼			
Supplemental Activity													
1) Output of the draft and support for preparation of enactment									◎				▼
2) Relation with other organizations					→								▼
Dispatch of Experts (Long-term Experts)													
Chief Advisor	6	→											▼
Coordinator	5	→											▼
Technical Experts	7	→								▼			▼
(Short term experts)													
			4	→	1	→	4	→	4	→		(7)	→
Training of Laotian counterpart in Japan													
				→	3C/P			→	3C/P			→	1C/P
Provision of Machinery & Equipment													
		→											▼
Seminars													
		Inception Seminar ◎ 11			Interim Seminar ◎ 7			Final Seminar ◎ 5					
Workshop / Technical exchange													
						9 ◎		2 ◎					
Joint coordinating committee meeting													
				◎ 1		9 ◎		3 ◎			9 ◎		
Evaluation meeting													
					Mid-term Evaluation	9 ◎				Final Evaluation	9 ◎		
Dispatch of JICA Survey Team													
						9 ◎					9 ◎		

1/1/01

Project on
"Electric Power Technical Standard Establishment"
Hydropower plant / Substation

Activities	Results	Responsible person	2000												2001					2002										
			1	2	3	4	5	6	7	8	9	10	11	12	1	2	3	4	5	1	2	3	4	5						
① Seminar	① Train in JAPA	Mr. Sioukan																												
② Short term Expert from foreign countries	② Kick-off	Mr. Sioukan																												
B. Grasp contents to contain in technical standard B-1. Grasp technical standard in foreign countries	③ Contents List	M Mr. Sioukan Mr. Viengsay																												
	④ Summary of technical standard in foreign countries	...																												
	⑤ Collect technical standard JAPAN, IEEE, IEC, ASEAN	Mr. Sioukan																												
	⑥ Comparison of technical standards in foreign countries (table of contents)	A Mr. Sioukan Expert																												
	⑦ Format of summary - JAPAN - IEEE (table of contents)	Mr. Viengsay Mr. Douangpy (EDL) Mr. Khampha (EDL)																												
	⑧ IEC (table of contents)	Mr. Sioukan Expert																												
	⑨ ASEAN (table of contents)	Mr. Douangpy (EDL) Mr. Viengsay Mr. Sioukan																												
	B-2. Grasp operation of technical standard (Criteria whether laws are different) (relationship with design and plan) (inspection report)	⑩ Operation of the technical standard	M Mr. Sioukan																											
C. Make technical standard draft	⑪ Technical Standard draft	M Mr. Sioukan																												
	⑫ Technical term	A Mr. Viengsay																												
	⑬ Examination of technical standard (Criteria)	Mr. Sioukan																												
	- Insulation	Mr. Sioukan Mr. Viengsay																												
	- Earth	Mr. Douangpy (EDL)																												
	- Strength (heat, pressure, mechanical)	Mr. Khampha (EDL) Mr. Viengsay																												
	- Isolation	Mr. Viengsay																												
	- Pollution	Mr. Sioukan Mr. Douangpy (EDL)																												
	- Protect	Mr. Sioukan Mr. Khampha (EDL)																												
	- Monitoring / control	Mr. Viengsay Mr. Khampha (EDL)																												
⑭ Method of inspection	A Mr. Sioukan																													
⑮ Operation of the technical standard (influence)	Mr. Viengsay																													

Grasp problems
- Grasp technical design of existing equipments
- Grasp technical design of newly projects

Grasp contents to contain in TS

Make TS draft

NEX 7-3: Work Plan of Transmission

Schedule (Transmission)

Upper row: ■■■—Original plan

Lower row: ◆◆◆—Achievements, ◇◇◇—Future plan

Activities	results	2000												2001												2002					
		7	8	9	10	11	12	1	2	3	4	5	6	7	8	9	10	11	12	1	2	3	4	5	6						
○Make Work Plan		■	◆																												
○Inception Seminar					■	◆																									
○Midterm Seminar														■				◆													
○Final Seminar																														■	
○Short term Expert (1st year)												■	■	■																	
○Short term Expert (2nd year)																											■	■	■		
																												◇	◇		
1. Grasp the design of existing facilities and planning facilities																															
1-1. Collect the documents																															
1-1-1. Existing overhead T.L.																															
·Facilities data voltage, section, distance, type and size of wire, number of circuits, type and number of supporting structure, designing company, constructing company	Facilities data list	■	■	■																											
		◆	◆	◆	◆	◆	◆	◆	◆	◆	◆	◆	◆	◆	◆	◆	◆	◆	◆	◆	◆	◆	◆	◆	◆	◆	◆	◆	◆	◆	
·Designing document report of feasibility study, steel tower designing document, foundation designing document, ground plan, running through figure, result of former test to use	Designing document list	■	■	■																											
		◆	◆	◆	◆	◆	◆	◆	◆	◆	◆	◆	◆	◆	◆	◆	◆	◆	◆	◆	◆	◆	◆	◆	◆	◆	◆	◆	◆	◆	
·Maintenance document inspection and check manuals, reports of inspection and check	Maintenance document list	■	■	■																											
					◆	◆	◆	◆	◆	◆	◆	◆	◆	◆	◆	◆	◆	◆	◆	◆	◆	◆	◆	◆	◆	◆	◆	◆	◆	◆	
·Accident data accident data by the cause(human touch, animal touch, thunder, equipment defect,	Accident data list				■																										
					(No Data)																										

Schedule (Transmission)

Upper row: ■ ■ ■ — Original plan

Lower row: ◆ ◆ ◆ — Achievements, ◇ ◇ ◇ — Future plan

ACTIVITIES	Results	2000												2001												2002					
		7	8	9	10	11	12	1	2	3	4	5	6	7	8	9	10	11	12	1	2	3	4	5	6						
The interference and the safety					■	■	■	■	■	■	■	■	■	■																	
Underground T.L.																															
2-1.Weather data																															
2-1-1.Select the collection points			■																												
2-1-2.Collect the data (wind velocity, temperature, rainfall, thunder)	Weather data list		◆																												
2-2.Analyze the weather data	Weather analysis reports																														
2-2-1.Calculate the wind velocity recurrence interval value							■	■	■																						
2-2-2.Calculate maximum, minimum and average temperature						■																									
3.Make the outline of Technical Standard																															
3-1.Listing the items based on Japanese Technical Standard								■																							
3-2.Add the extra items from characteristics of facilities in Laos • Single Wire Earth Return System	Outline of Technical Standard																														

INEX 7-4: Work Plan of Distribution

•WorkPlan (Distribution)

The Upper Row: ■■■—Original Plan
 The Lower Row: ◆◆◆—Achived Status, ◇◇◇—Future Plan

Component/Activities	Period Fiscal 2000					Fiscal 2001												2002	
	Jan	Feb	Mar	Apr	May	Jun	Jul	Aug	Sep	Oct	Nov	Dec	Jan	Feb	Mar	Apr	May	Jun	
A. Seek the Distribution Problems.																			
A-1 Seek the Distribution Technology Problems with Counterpart.	◆	◆																	
A-2 Make the List of Questionnaire & Answer for the Surbey of Existing Facilities.			◆																
A-3 Listen to the Opinion and Question by the Inception Seminar.				◆															
B. Survey the Existing Facilities in Lao.																			
B-1 Make the Schedule of Existing Facilities about Date, Time, Place, Person, Topic(Questionnair & Answer).		◆																	
B-2 Visit Vientiane Municipality Branch				◆															
B-3 Visit LuangPrabang Agency				◆	◆														
B-4 Visit Vientiane Province Agency					◆														
B-5 Visit Khammouane Agency					◆														
B-6 Visit Bolikhamxay Agency					◆														
B-7 Visit Boko Agency				◆															
B-8 Visit Houaphanh Agency					◆														
B-9 Visit Savanakheth Agency				◆															
B-10 Visit Saravan Agency				◆															
B-11 Visit Champasak Agency				◆															
B-12 Summary the Result of Survey				◆	◆														

1.1 -

•WorkPlan (Distribution)

The Upper Row: ■■■-Original Plan
 The Lower Row: ◆◆◆-Achived Status, ◇◇◇-Future Plan

Component Activities	Period																								
	Fiscal 2000						Fiscal 2001						2002												
	Jan	Feb	Mar	Apr	May	Jun	Jul	Aug	Sep	Oct	Nov	Dec	Jan	Feb	Mar	Apr	May	Jun	Jul	Aug	Sep	Oct	Nov	Dec	Jan
C. Examine the Distribution Problems.																									
C-1 Examine the Distribution Problems with the Result of Survey.						■																			
D. Study Japanese Technical Standards.						◆																			
D-1 Study the Purpose , Background , Content of Japanese Technical Standards for Making Draft Article of Laotian Electric Power Technical	■	■	■	■		■																			
D-2 Dispatch the Short-term Japanese Expert for the Ensure Security of General Public & Maintenance of Distribution Facilities.(Mr.Hajime Saito)						■																			
E. Make Draft Articles of Laotian Electric Power Technical Standard(LEPTS)																									
E-1 Make Draft Articles of LEPTS Based on the Examination the Distribution Problems and Japanese Technical Standards.						◆	◆	◆	◆	◆	◆	◆	◆	◆	◆	◆	◆	◆	◆	◆	◆	◆	◆	◆	◆
E-2 Listen the Opinion & Advice by Japanese Supporting Committee, and revise the Lao Frame of Draft.																									
E-3 Listen to the Opinion & Question about Draft Article of LEPTS by Interim Seminar.																									
F. Make Final Draft Texts of Laotian Electric Power Technical Standard (LEPTS) .																									
F-1 Make Final Draft Texts of LEPTS based on Draft Articles of LEPTS.																									
F-1-1 Definition of Terms																									
F-1-2 Classification of Voltage & Earthing System & Dielectric Strength																									
F-1-3 Allowable Voltage for Distribution Line																									
F-1-4 Insulation of Distribution Line																									
F-1-5 Overhead Distribution Conductors																									
F-1-6 Earthing of Distribution Line																									
F-1-7 Protective Facilities for Medium Voltage and Low voltage Fault Contacts(Delete)																									

MASTER PLAN OF THE PROJECT

(1) Objectives of the Project

1) Overall Goal

Lao Electric Power Technical Standard is enacted.

2) Project Purpose

DOE will be able to establish and maintain Lao Electric Power Technical Standard.

(2) Outputs and Activities of the Project

1) Outputs

1. Necessary information for Lao Electric Power Technical Standard will be collected.
2. Necessary technique for establishing/maintaining Lao Electric Power Technical Standard will be mastered.
3. Necessary contents of Lao Electric Power Technical Standard will be grasped.

2) Activities

- 1-1 Grasp technical standards of existing facilities in Laos
- 1-2 Recognize existing facilities in Laos
- 1-3 Grasp design standards of newly proposed projects in Laos
- 1-4 Collect electric power technical standards of foreign countries
- 2-1 Understand electric power technical standards
- 2-2 Understand outline of electric power technology
- 2-3 Understand administration of electric power
- 3-1 Make table of comparison on technical standards
- 3-2 Pick up necessary items for a Lao Electric Power Technical Standard plan
- 3-3 Make the Lao Electric Power Technical Standard plan

Handwritten initials and marks on the left margin.

ANNEX 9: Project Design Matrix (PDM)

The Project on Electric Power Technical Standard Establishment in Lao PDR - PDM

Duration : May 8, 2000 ~ May 7, 2003

Preparation of PDM : Draft by JICA Implementation Study Team

Implementation institutions: Japanese side-JICA, Lao side-DOE

Country of implementation : Lao PDR

Target Area : The Whole Republic

Target Group : DOE officials and EDL technical experts

March 7, 2000

- 57 -

Narrative Summary	Verifiable Indicators	Means of Verification	Important Assumption
(Overall goal) Lao Electric Power Technical Standard is enacted.	1. Existence of enacted Lao Electric Power Technical Standard	1. Code to enact Lao Electric Power Technical Standard	
(Project purpose) DOE will be able to establish and maintain Lao Electric Power Technical Standard .	1. Existence of Lao Electric Power Technical Standard	1. Lao Electric Power Technical Standard	a. Enactment of Electric Power Technical Standard is approved by Lao authorities.
(Output) 1. Necessary information for Lao Electric Power Technical Standard will be collected 2. Necessary technique for establishing/maintaining Lao Electric Power Technical Standard will be mastered. 3. Necessary contents of Lao Electric Power Technical Standard will be grasped.	1-1 Specification of existing facilities. 1-2 Technical Standard for design/operation of existing facilities. 1-3 Technical Problem concerning design and operation of existing facilities 1-4 Designing Standard for new projects 1-5 Difference in designing level of new projects 1-6 Number of references for Technical Standard 2-1 C/P's Understanding and ability for establishing /maintaining Technical Standard 3-1 Subject and controlled level of the standard 3-2 Establishment of Lao Electric Power Technical Standard	1-1 Registered Specification of existing facilities, 1-2 List of Technical Standards for design /operation of existing facilities 1-3 List of Technical Problem concerning design and operation of existing facilities (table for management of facility operation and maintenance, statistical table of electric failure) 1-4 List of Designing Standards for new project 1-5 List of design levels of new projects 1-6 List of references for Technical Standard (including references of neighboring and western countries) 2-1 technical monitoring sheet 3-1 Outline of Lao Electric Power Technical Standard 3-2 Established Lao Electric Power Technical Standard	a. Method of establishing Power Technical Standard is maintained.

Handwritten marks: a scribble and the number '14' with a horizontal line through it.

(Activities of the Project)	Inputs to the Project		
	The Lao Side	The Japanese Side	
1-1 Grasp technical standards of existing facilities in Laos	1 Local Costs Necessary budget for the implementation of the project.	1 Dispatch of Experts (1) Long-term experts Chief Advisor Coordinator Hydropower civil engineering Hydropower plants and substations Transmission Distribution	a Customs clearance of the equipment sent by the Japanese side will be processed smoothly.
1-2 Recognize existing facilities in Laos			
1-3 Grasp design standards of newly proposed projects in Laos			
1-4 Collect electric power technical standards of foreign countries			
2-1 Understand electric power technical standards	3 Preparation of Buildings and Facilities	(2) Short-term experts : Short-term experts necessary for technology transfer.	(Pre-conditions) a Allocation of space for the project
2-2 Understand outline of electric power technology			
2-3 Understand administration of electric power			
3-1 Make table of comparison on technical standards	4 Provision and Maintenance of Necessary Machinery, Equipment and Materials	2 Lao Counterparts Training in Japan 3 Provision of Machinery & Equipment	
3-2 Pick up necessary items for a Lao Electric Power Technical Standard plan			
3-3 Make the Lao Electric Power Technical Standard plan			

Tentative Schedule of Implementation (TSI)

Calendar Year	2000				2001				2002				2003				2004			
Japanese Fiscal Year	1999				2000				2001				2002				2003		2004	
	I	II	III	IV	I	II	III	IV	I	II	III	IV	I	II	III	IV	I	II		
Terms of Cooperation																				
Japanese Side																				
I. Dispatch of Study Team																				
(1) Preliminary Study																				
(2) Supplementary Study																				
(3) Implementation Study																				
(4) Advisory																				
(5) Final Evaluation																				
II. Dispatch of Long-Term Experts																				
(1) Chief Advisor																				
(2) Coordinator																				
(3) Hydropower Civil Engineering																				
(4) Hydropower Plants and Substations																				
(5) Transmission																				
(6) Distribution																				
III. Dispatch of Short-Term Experts	(short-term experts in specific fields will be dispatched, if necessary.)																			
IV. Training of Counterpart Personnel in Japan	(A certain number of C/P will be accepted in Japan annually.)																			
V. Provision of Machinery and Equipment																				
Laotian Side																				
I. Building and Facilities																				
II. Machinery and Equipment																				
III. Allocation of Counterpart Personnel and Supporting Staff																				
IV. Allocation of Budget																				

Note:

1. The Japanese fiscal year starts in April and ends in March.
2. This schedule is subject to change in accordance with the progress of the Project.

Plan of Operations (PO)

Calendar Year	2000				2001				2002				2003	Responsible Person in Project	Input	Remarks
Fiscal Year	2000				2001				2002							
	I	II	III	IV	I	II	III	IV	I	II	III	IV				
Term of Technical Cooperation																
1. Necessary information for Lao Electric Power Technical Standard will be collected																
1-1 Grasp technical standards of existing facilities in Laos													CP	EX		
1-2 Recognize existing facilities in Laos													CP	EX		
1-3 Grasp design standards of newly proposed projects in Laos													CP	EX		
1-4 Collect electric power technical standards of foreign countries													CP	EX		
2. Necessary technique for establishing/maintaining Lao Electric Power Technical Standard will be mastered																
2-1 Understand electric power technical standards													CP	EX		
2-2 Understand outline of electric power technology													CP	EX		
2-3 Understand administration of electric power													CP	EX		
3. Necessary contents of Lao Electric Power Technical Standard will be grasped.																
3-1 Make table of comparison on technical standards													CP	EX		
3-2 Pick up necessary items for a Lao Electric Power Technical Standard plan													CP	EX		
3-3 Make the Lao Electric Power Technical Standard plan													CP	EX		

PD: Project Director CP: Counter Part EX: Expert

1) Long-term Experts

No.	Name	Title	Period
1	Dr. Shigenori KURODA	Chief Advisor	Sep. 2001 - Mar. 2002
2	Mr. Masaaki DOI	Coordinator	Sep. 2001 - Mar. 2002
3	Mr. Takashi TADA	Expert in Hydropower Civil Engineering	Sep. 2001 - Mar. 2002
4	Mr. Hiraki NISHIGAMI	Expert in Hydropower Plant/Substation	Sep. 2001 - Mar. 2002
5	Mr. Takahiro ISHIMARU	Expert in Transmission	Sep. 2001 - Mar. 2002
6	Mr. Munenori OTA	Expert in Distribution	Sep. 2001 - Mar. 2002

2) Short-term Experts

No.	Number	Post Title	Field	Duration	Date Required
1	1 person	Foreign countries' technical standard and analysis case study: Phase II	Hydropower Civil Engineering	1 month	Oct. 2001
2	1 person	Guidance of technical evaluation and resolution on the problem found through the survey at the hydropower facilities	Hydropower Plant/Substation	1 month	Oct. 2001
3	1 person	Underground transmission line: Phase II	Transmission	1 month	Oct. 2001
4	1 person	Distribution technology for voltage control and grounding system, and maintenance operation	Distribution	0.5 months	Jan. 2002
5	1 person	Assistance for fixation of LEPTS texts in Hydropower civil engineering	Workshop of Hydropower Civil Engineering	1/3 months	Feb. 2002
6	1 person	Assistance for fixation of LEPTS texts in Hydropower plant/substation	Workshop of Hydropower Plant/Substation	1/3 months	Feb. 2002
7	1 person	Assistance for fixation of LEPTS texts in Transmission	Workshop of Transmission	1/3 months	Feb. 2002
8	1 person	Assistance for fixation of LEPTS texts in distribution	Workshop of Distribution	1/3 months	Feb. 2002

LEPTS: The Lao Electric Power Technical Standard

ANNEX 13: Training of Laotian Counterpart Personnel in Japan in
Residual Period in Fiscal Year 2001

September 4, 2001

No.	Number	Duration	Date Required
1	1 person	1.5 months	Nov. 2001
2	1 person	1.5 months	Nov. 2001
3	1 person	1.5 months	Nov. 2001

A u -

ANNEX 14: Allocation of Counterpart Personnel by the Laotian Side in Residual Period in Fiscal Year 2001

List of Laotian Counterpart Personnel

September 4, 2001

No.	Title	Field	Name	From	Period
1	Project Director		Mr. Houmphone BULYAPHOL	DOE	Sep. 2001-Mar. 2002
2	Project Manager		Dr. Somboune MANOLOM	DOE	Sep. 2001-Mar. 2002
3	Fulltime	Hydropower Civil Engineering	Mr. Voradeth PHONEKEO	DOE	Sep. 2001-Mar. 2002
4	Part time	- do. -	Mr. Phonsavanh PHIMMASONE	DOE	Sep. 2001-Mar. 2002
5	Part time	- do. -	Mr. Phoukong SENGVILAY	DOE	Sep. 2001-Mar. 2002
6	Part time	- do. -	Mr. Vantheva BOUKHASITH	EDL	Sep. 2001-Mar. 2002
7	Fulltime	Hydropower Plant/ Substation	Mr. Sisoukan SAYARATH	DOE	Sep. 2001-Mar. 2002
8	Part time	- do. -	Mr. Viengsay CHANTHA	DOE	Sep. 2001-Mar. 2002
9	Part time	- do. -	Mr. Khampha SIRIVONG	EDL	Sep. 2001-Mar. 2002
10	Part time	- do. -	Mr. Douangpy SOUVANNACHITH	EDL	Sep. 2001-Mar. 2002
11	Fulltime	Transmission	Mr. Pethsavanh RATTANATHONGXAY	DOE	Sep. 2001-Mar. 2002
12	Part time	- do. -	Mr. Thongphanh SAKOUNSOUK	DOE	Sep. 2001-Mar. 2002
13	Part time	- do. -	Mr. Vithoun LABANDITH	DOE	Sep. 2001-Mar. 2002
14	Part time	- do. -	Mr. Sengkham THANIVONG	EDL	Sep. 2001-Mar. 2002
15	Fulltime	Distribution	Mr. Houmphan VOGPHACHAN	DOE	Sep. 2001-Mar. 2002
16	Fulltime	- do. -	Mr. Vanhdy VILAYSANE	DOE	Sep. 2001-Mar. 2002
17	Part time	- do. -	Mr. Thanmanoun NAKHAVITH	DOE	Sep. 2001-Mar. 2002
18	Part time	- do. -	Mr. Na NAOPHAKDY	EDL	Sep. 2001-Mar. 2002
19	Part time	- do. -	Mr. Mixay CHITTARATH	EDL	Sep. 2001-Mar. 2002
20	Part time	- do. -	Mr. Maypheth PHONPHILA	EDL	Sep. 2001-Mar. 2002

ANNEX 15: Allocation of Budget by the Laotian Side in Residual Period in Fiscal Year 2001

1. Budget for the Project

No.	Fiscal Year	Amount in Kips	Remarks
1	2001 - 2002 (Oct.2001 - Sep.2002)	25,000,000	It is only estimated.

Exchange rate: 1USD=7500 kips (1999-2000)

1USD=9300 kips (Mid 2001 to date)

2. Average salary of Government Officer (for Counterpart staff)

1	Average salary (Kips/Month)	18 Persons (Kips/Month)	18 Persons (Kips/Year)
2	200,000	$200,000 \times 18 = 3,600,000.$	$3,600,000. \times 12 = 43,200,000.$

3. Annual budget of DOE from 2001 to 2002

No.	Fiscal Year	Budget (Kips)	Remark
1	2001-2002 (Oct.2001 - Sep.2002)	228,000,000	It is only estimated.

SA

ANNEX 16: Frame of Work Plan in Fiscal Year 2002 and until the Termination of the Project

September 4, 2001

Headings	Items	4, '02	5	6	7	8	9	10	11	12	1 '03	2	3	4
Activity	1. Draft of LEPTS	→		→										
	2. Final Seminar		○											
	3. Interpretation guidance for deeper comprehension of LEPTS				→									
	4. Guidance and assistance for operation and management of LEPTS				→									
	5. CAP's internal transfer of LEPTS contents for dissemination				→									

LEPTS: The Lao Electric Power Technical Standard

1) Long-term Experts

No.	Name	Title	Period
1	Dr. Shigenori KURODA	Chief Advisor	Apr. 2002 - Apr. 2003
2	Mr. Masaaki DOI	Coordinator	Apr. 2002 - Apr. 2003
3	Mr. Takashi TADA	Expert in Hydropower Civil Engineering	Apr. 2002 - July 2002
4	Mr. Hiroaki NISHIGAMI	Expert in Hydropower Plant/Substation	Apr. 2002 - July 2002
5	Mr. Takahiro ISHIMARU	Expert in Transmission	Apr. 2002 - July 2002
6	Mr. Munenori OTA	Expert in Distribution	Apr. 2002 - July 2002

2) Short-term Experts

No.	Number	Post Title	Field	Duration	Date Required
1	1 person	Interpretation guidance, guidance and assistance for deeper comprehension, operation and management of LEPTS	Hydropower Civil Engineering: Dam	3 months	Sep. 2002 - Nov. 2002
2	1 person	Interpretation guidance, guidance and assistance for deeper comprehension, operation and management of LEPTS	Hydropower Civil Engineering: Waterway	3 months	Sep. 2002 - Nov. 2002
3	1 person	Interpretation guidance, guidance and assistance for deeper comprehension, operation and management of LEPTS	Hydropower Plant/Generation	3 months	Oct. 2002 - Dec. 2002
4	1 person	Interpretation guidance, guidance and assistance for deeper comprehension, operation and management of LEPTS	Substation/ Switching Station	3 months	Oct. 2002 - Dec. 2002
5	1 person	Interpretation guidance, guidance and assistance for deeper comprehension, operation and management of LEPTS	Transmission	3 months	Oct. 2002 - Dec. 2002
6	1 person	Interpretation guidance, guidance and assistance for deeper comprehension, operation and management of LEPTS	Distribution	3 months	Jan. 2003 - Mar. 2003
7	1 person	Interpretation guidance, guidance and assistance for deeper comprehension, operation and management of LEPTS	User's site installation	3 months	Jan. 2003 - Mar. 2003

LEPTS: The Lao Electric Power Technical Standard

ANNEX 18: Training of Laotian Counterpart Personnel in Japan in Fiscal Year 2002 and until the Termination of the Project

September 4, 2001

No.	Number	Field	Duration	Date Required
1	1 person	Project Manager	0.5 months	Nov. 2002

Handwritten signature

ANNEX 19: Allocation of Counterpart Personnel by the Laotian Side in Fiscal Year 2002 and until the Termination of the Project

List of Laotian Counterpart Personnel

September 4, 2001

No.	Title	Field	Name		From	Period
1	Project Director		Mr. Houmphone	BULYAPHOL	DOE	Apr. 2002-Apr. 2003
2	Project Manager		Dr. Somboune	MANOLOM	DOE	Apr. 2002-Apr. 2003
3	Fulltime	Hydropower Civil Engineering	Mr. Voradeth	PHONEKEO	DOE	Apr. 2002-Apr. 2003
4	Part time	- do. -	Mr. Phonsavanh	PHIMMASONE	DOE	Apr. 2002-Apr. 2003
5	Part time	- do. -	Mr. Phoukong	SENGVILAY	DOE	Apr. 2002-Apr. 2003
6	Part time	- do. -	Mr. Vantheva	BOUKHASITH	EDL	Apr. 2002-Apr. 2003
7	Fulltime	Hydropower Plan/ Substation	Mr. Sisoukan	SAYARATH	DOE	Apr. 2002-Apr. 2003
8	Part time	- do. -	Mr. Viengsay	CHANTHA	DOE	Apr. 2002-Apr. 2003
9	Part time	- do. -	Mr. Khampha	SIRVONG	EDL	Apr. 2002-Apr. 2003
10	Part time	- do. -	Mr. Douangpy	SOUVANNACHITH	EDL	Apr. 2002-Apr. 2003
11	Fulltime	Transmission	Mr. Pethsavanh	RATTANATHONGXAY	DOE	Apr. 2002-Apr. 2003
12	Part time	- do. -	Mr. Thongphanh	SAKOUNSOUK	DOE	Apr. 2002-Apr. 2003
13	Part time	- do. -	Mr. Vithoun	LABANDITH	DOE	Apr. 2002-Apr. 2003
14	Part time	- do. -	Mr. Sengkham	THANVONG	EDL	Apr. 2002-Apr. 2003
15	Fulltime	Distribution	Mr. Houmphane	VOGPHACHAN	DOE	Apr. 2002-Apr. 2003
16	Fulltime	- do. -	Mr. Vanhdy	VILAYSANE	DOE	Apr. 2002-Apr. 2003
17	Part time	- do. -	Mr. Thammanoun	NAKHAVITH	DOE	Apr. 2002-Apr. 2003
18	Part time	- do. -	Mr. Na	NAOPHAKDY	EDL	Apr. 2002-Apr. 2003
19	Part time	- do. -	Mr. Mixay	CHITTARATH	EDL	Apr. 2002-Apr. 2003
20	Part time	- do. -	Mr. Maypheth	PHONPHILA	EDL	Apr. 2002-Apr. 2003

ANNEX 20: List of Attendance

1. The Japanese side

1.1 The Japanese Management Consultation Team

Mr. Takanori TANAKA	Leader
Ms. Naoko MATSUDA	Technical Cooperation Planning
Mr. Takumi IWABUCHI	Hydropower Civil Engineering
Mr. Takehisa MIYAHARA	Hydropower Generation and Transformation
Mr. Shigeo IMAMURA	Transmission and Distribution
Mr. Naohisa YOSHIFUJI	Project Management
Mr. Yoshiki MIZUGUCHI	Evaluation Analysis

1.2 JICA Laos Office

Mr. Makoto AOKI	Resident Representative
Mr. Nobuaki MIYATA	Deputy Resident Representative
Mr. Norihiro IKEDA	Assistant Resident Representative
Mr. Koichi MOTOMURA	Staff

1.3 The Project

Dr. Shigenori KURODA	Chief Advisor
Mr. Masaaki DOI	Coordinator
Mr. Takashi TADA	Expert in Hydropower Civil Engineering
Mr. Hiroaki NISHIGAMI	Expert in Hydropower plant / substation
Mr. Takahiro ISHIMARU	Expert in Transmission
Mr. Munenori OTA	Expert in Distribution

1.4 JICA Individual Experts

Mr. Hajime WATANABE	To Committee for Planning and Cooperation (CPC)
Mr. Azuma TSUNODA	To Department of Electricity (DOE)
Mr. Keiichi SATO	To Electricite du Laos (EDL)

1.5 Embassy of Japan

Mr. Yoshinori MIYAMOTO	Ambassador
Mr. Shusaku HIRAYAMA	Second Secretary



2. The Laotian side

2.1 Ministry of Industry and Handicrafts (MIH)

H. E. Mr. Somboun RASASOMBATH Vice Minister

2.2 Electricite du Laos (EDL)

Mr. Vilaphonh VIRAVONG General Manager

2.3 The Project

Mr. Houmphone BULYAPHOL	Project Director
Dr. Somboune MANOLOM	Project Manager
Mr. Voradeth PHONEKO	Fulltime Counterpart in Hydropower Civil Engineering
Mr. Sisoukan SAYARATH	Fulltime Counterpart in Hydropower plant / substation
Mr. Phetsavanh RATTANATHONGXAY	Fulltime Counterpart in Transmission
Mr. Vanhdy VILAYSANE	Fulltime Counterpart in Distribution
Mr. Viengsay CHANTHA	Part time Counterpart in Hydropower plant / substation
Mr. Douangpy SOUVANNACHITH	Part time Counterpart in Hydropower plant / substation
Mr. Vithoun LABANDITH	Part time Counterpart in Transmission
Mr. Sengkham THANIVONG	Part time Counterpart in Transmission
Mr. Thammanoun NAKHAVITH	Part time Counterpart in Distribution
Mr. Na NAOPHAKDY	Part time Counterpart in Distribution
Mr. Mixay CHITTARATH	Part time Counterpart in Distribution
Mr. Maypheth PHONPHILA	Part time Counterpart in Distribution

2.4 Committee for Planning and Cooperation (CPC)

Dr. Bountheuang MOUNLASY Director General