

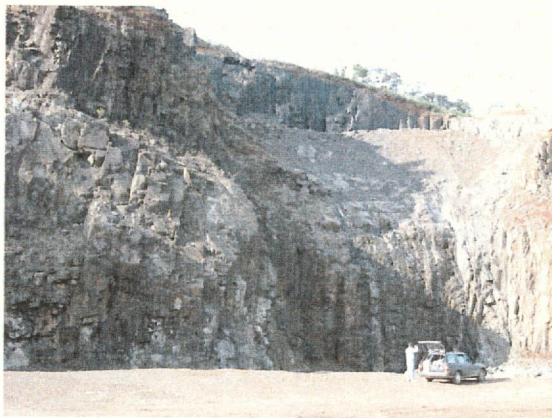
**Stop 2-29, new big quarry near Imbaú**

DATE	LOCATION	COORDINATION				SAMPLE No.	ROCK
2001/09/23	New big quarry near Imbaú on BR376, PR.	EASTING		NORTHING		AS016	
16:18		22J	523,181	UTM	7,295,684	Height	955 m

Gray to dark gray dolerite (or fine gabbro)  
Partly gabbroic lens or part included (photo 308). No sulfide mineral observed.  
Direction of dyke; N20 to 30 E, width: more than 80 meters.

Rock facies looks like Siquera Campos sill.

Photos: 308, 309-310



**Stop 2-33, large sill escapement near Siquera Campos**

DATE	LOCATION	COORDINATION				SAMPLE No.	ROCK
2001/09/24		EASTING		NORTHING		KN038	
11:50		22K	0,580,581	UTM	7,355,651	Height	866 m

North-east end: 22K 0,580,692, UTM7,355,75  
South-west end: 22K 0,578,895, UTM7,354,750

Outcrop has 2 kilometer in length tending north-east to south- west.  
Sample taken near north-east end.  
Coarse grained dolerite. Few to medium pyrite dissemination commonly observed.

When Shibuya came here, he could not find any sulfide at the both end, because they are like child margin not same as middle facies.

Photos: 319,320

