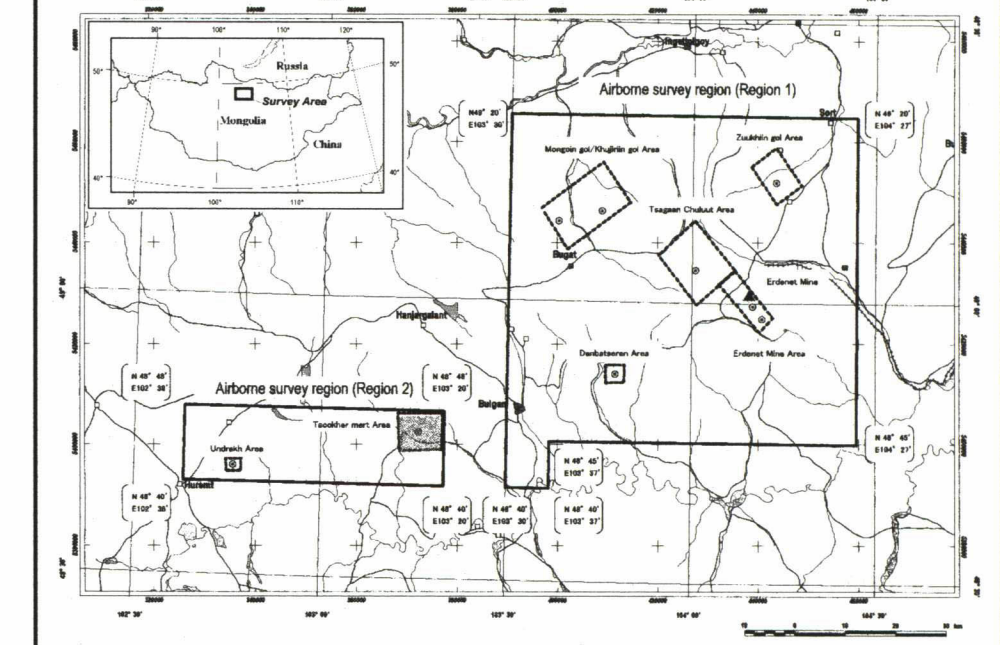
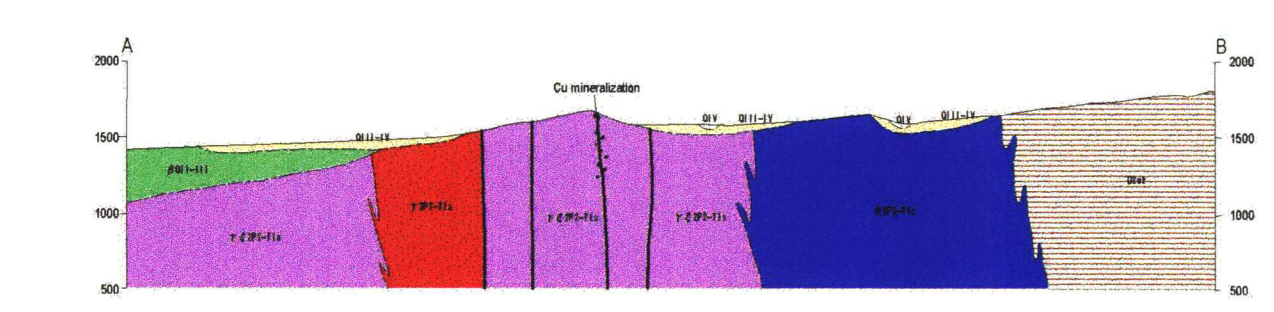
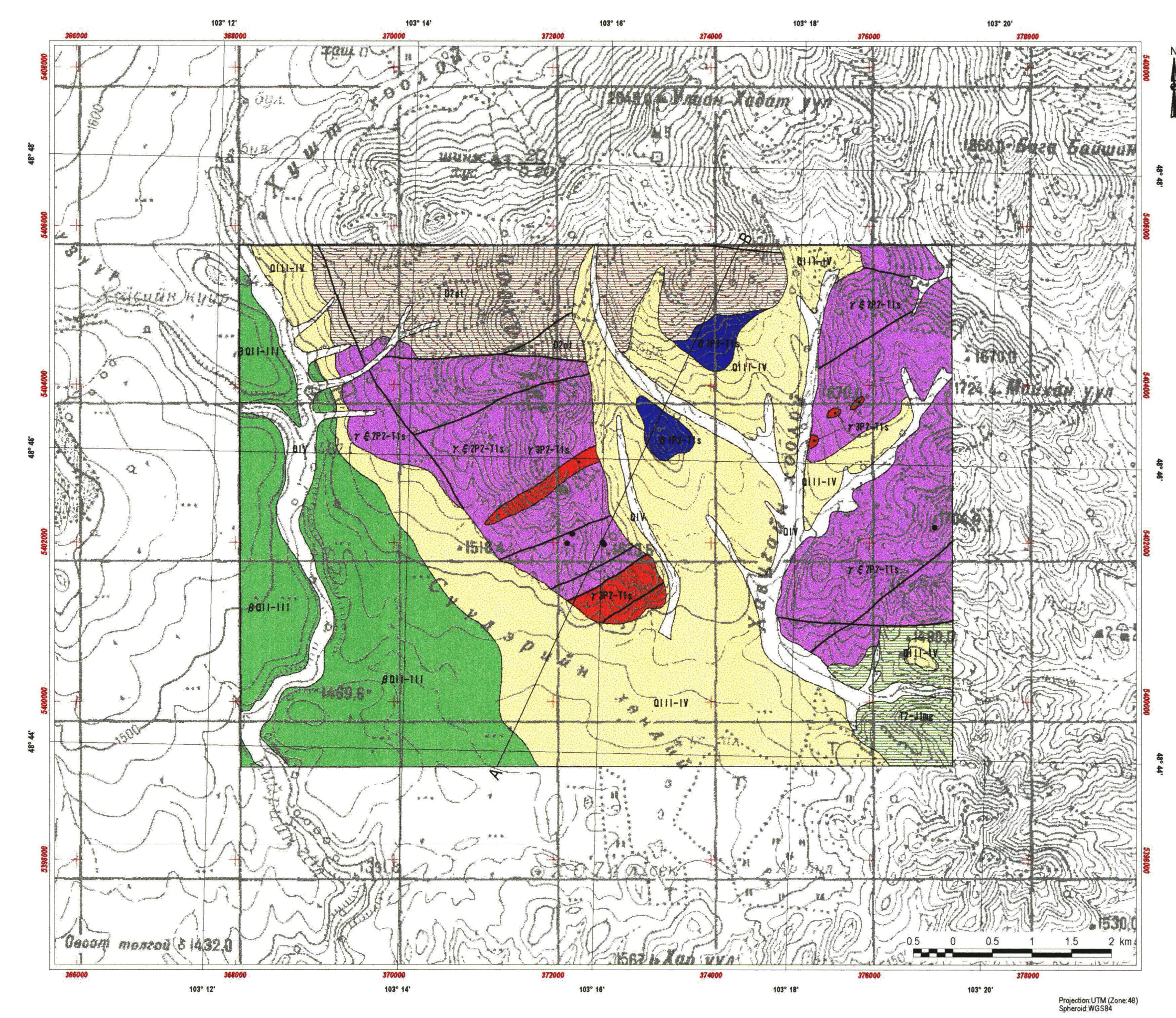


REPORT ON THE MINERAL EXPLORATION  
IN THE WESTERN ERDENET AREA, MONGOLIA  
PHASE I

Geological maps, geologic sections and mineral  
showings of the Tsookher mert area  
(1:50,000), (1:25,000)



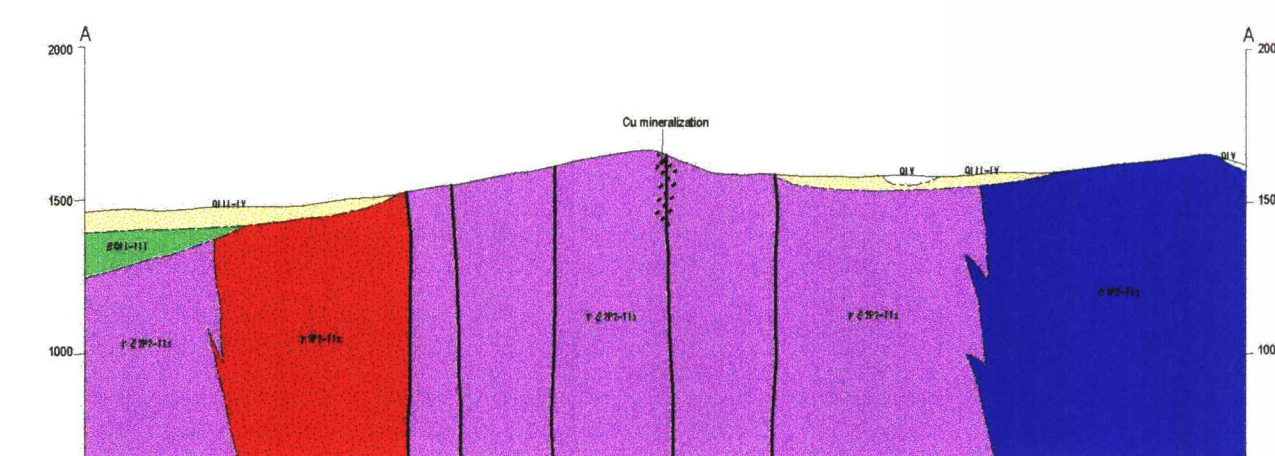
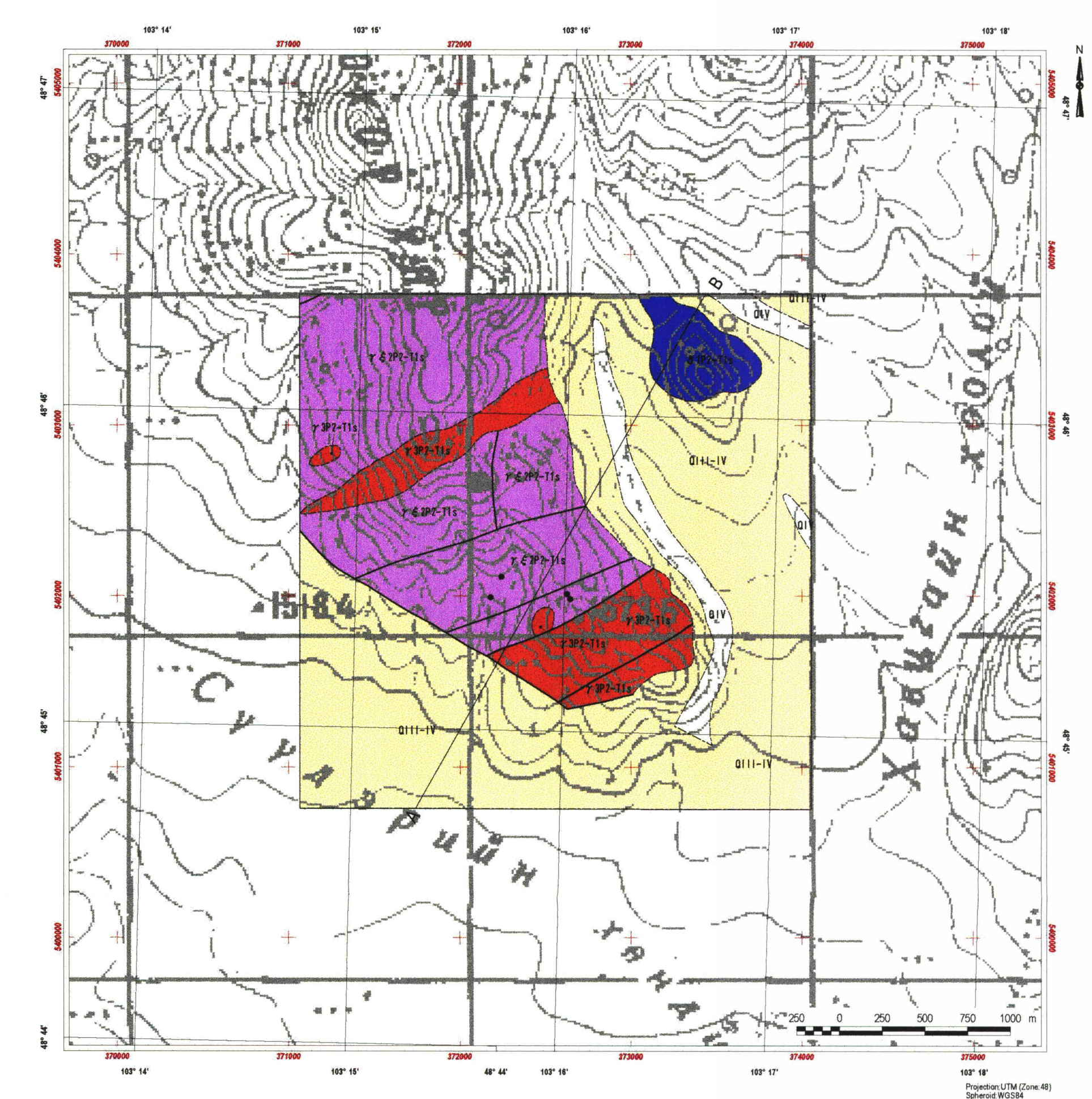
JAPAN INTERNATIONAL COOPERATION AGENCY  
METAL MINING AGENCY OF JAPAN  
FEBRUARY, 2002



**LEGEND**

<b>Sedimentary Rocks</b>		
Quaternary	Recent sediments: alluvial deposits: gravels, sand, silt and clay	
QIII-IV	Upper - Recent sediments: alluvial and colluvial deposits: gravels, sand, silt and clay	
QII-III	Middle - upper quaternary: basalt with olivine-pyroxene.	
T2-Jurassic	Mogol suite: volcanic rocks and dykes: microdiorite, andesite, porphyry, basalt, dacite and tuffaceous conglomerate.	
Devonian	Middle series: sandstone, siltstone, andesite, dacite, it's tuff.	
<b>Plutonic Rocks</b>		
Permian to Triassic	P2-T1s	Selenge Complex: granite.
	P2-T1s	Selenge Complex: Lower Triassic: moderate to fine grained, granite to syenite.
	P2-T1s	Selenge Complex: diorite.
<b>Structure</b>		
	Fault	
<b>Mineralization</b>		
	Mineral showing.	
	Section line	

Geological Map in the Tsookher mert area (1:50,000)



**LEGEND**

<b>Sedimentary Rocks</b>		
Quaternary	Recent sediments: alluvial deposits: gravels, sand, silt and clay	
QIII-IV	Upper - Recent sediments: alluvial and colluvial deposits: gravels, sand, silt and clay	
QII-III	Middle - upper quaternary: basalt with olivine-pyroxene.	
<b>Plutonic Rocks</b>		
Permian to Triassic	P2-T1s	Selenge Complex: granite.
	P2-T1s	Selenge Complex: Lower Triassic: moderate to fine grained, granite to syenite.
	P2-T1s	Selenge Complex: diorite.
<b>Structure</b>		
	Fault	
<b>Mineralization</b>		
	Mineral showing.	
	Section line	

Geological Map in the Tsookher mert area (1:25,000)