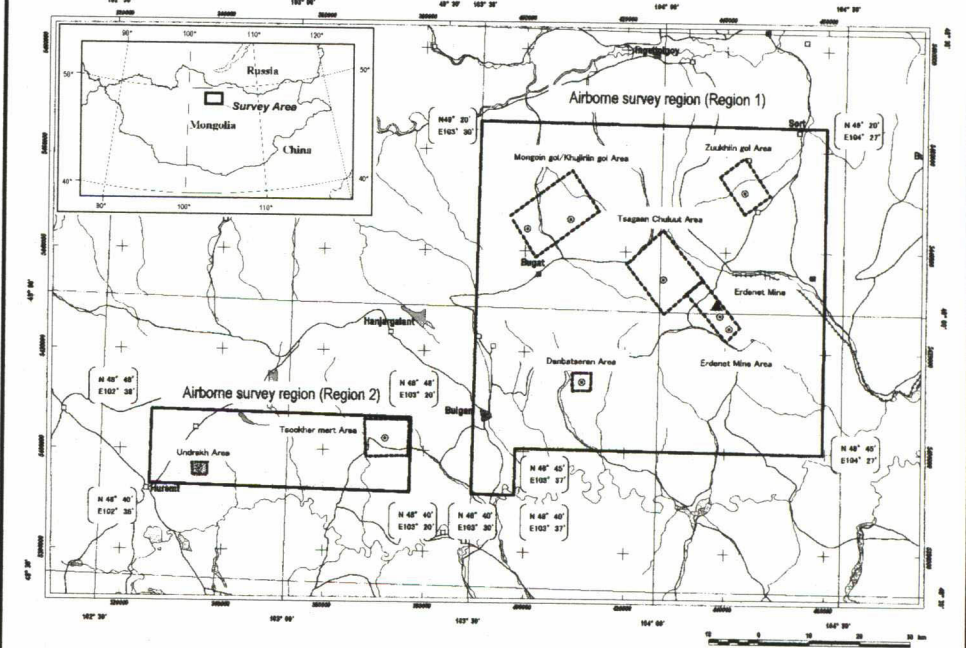
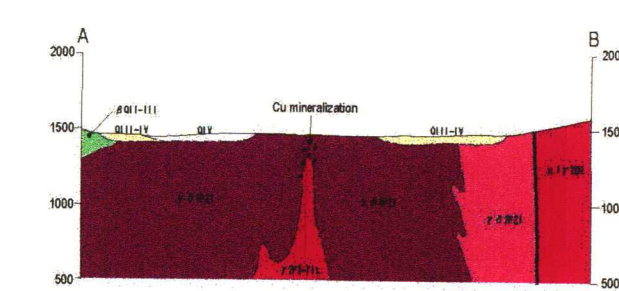
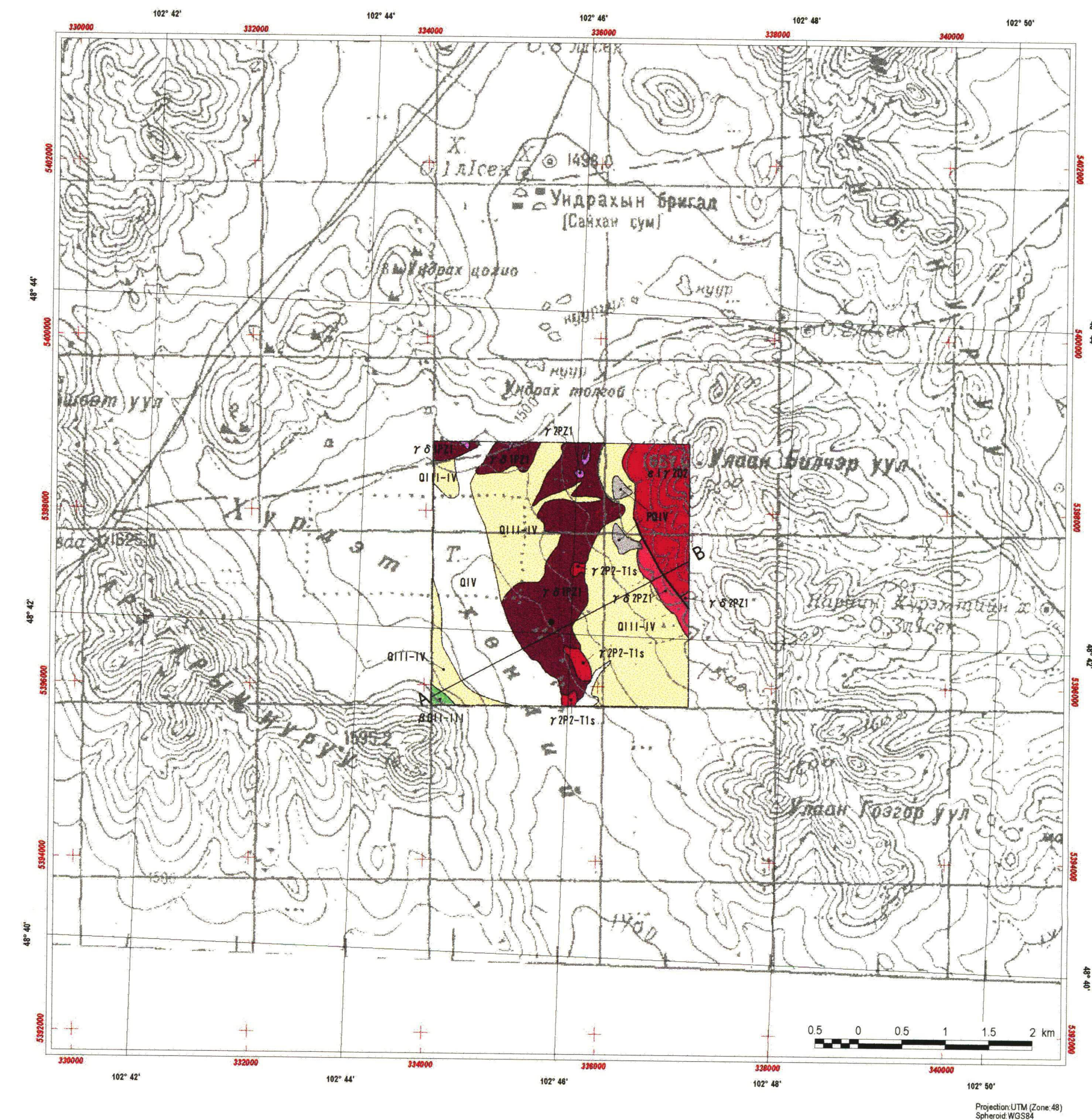


REPORT ON THE MINERAL EXPLORATION  
IN THE WESTERN ERDENET AREA, MONGOLIA  
PHASE I

Geological maps, geologic sections and mineral  
showings of the Undrak area  
(1:50,000), (1:25,000)



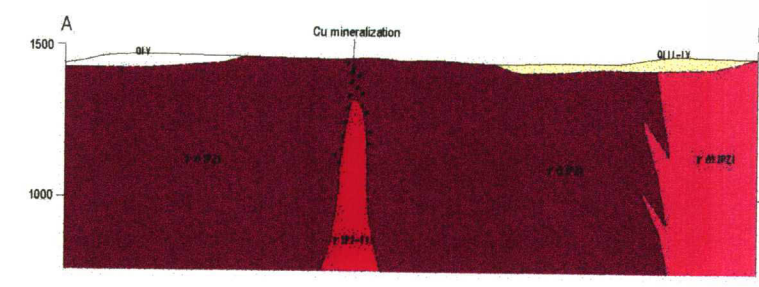
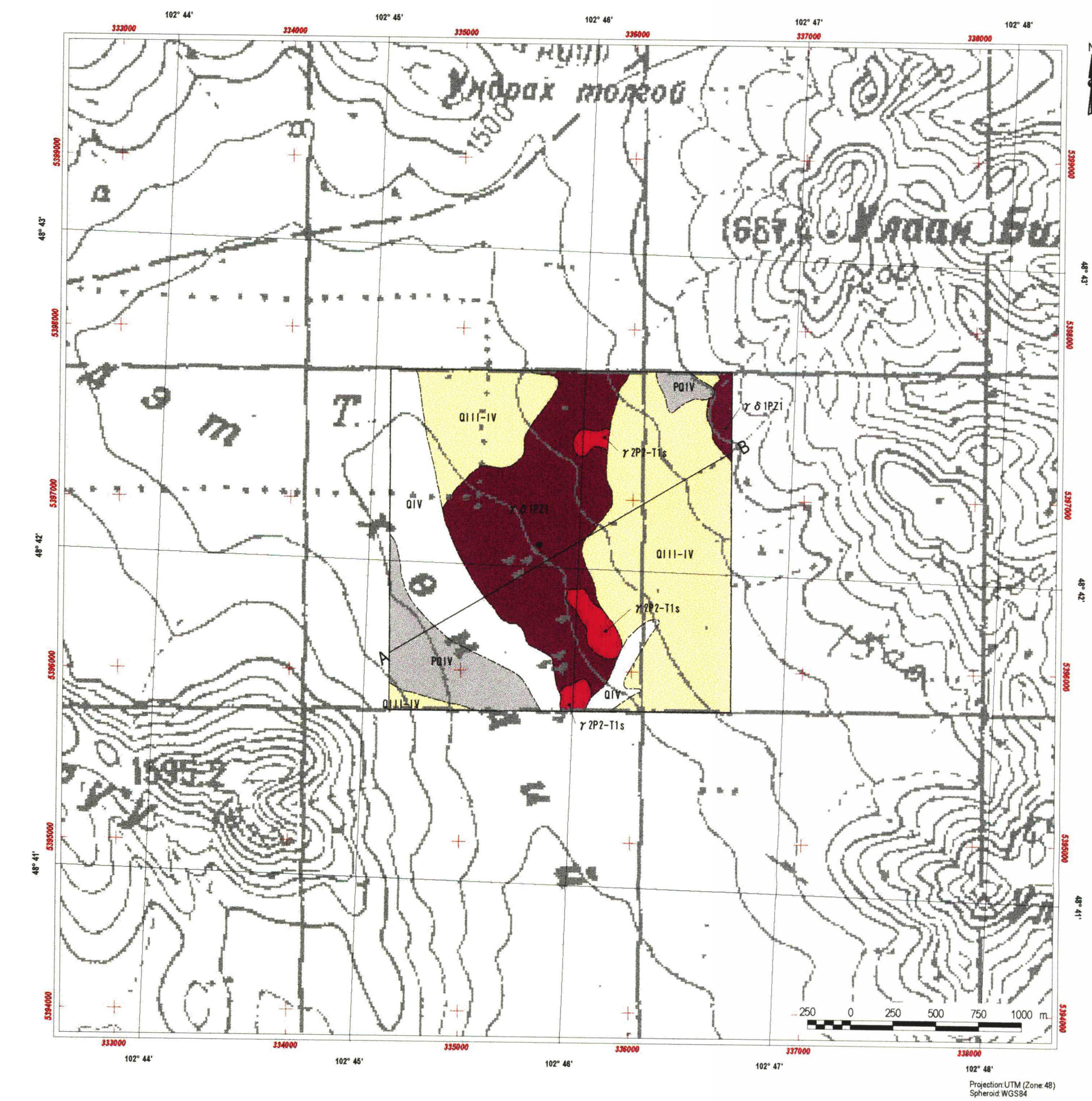
JAPAN INTERNATIONAL COOPERATION AGENCY  
METAL MINING AGENCY OF JAPAN  
FEBRUARY, 2002



**LEGEND**

Sedimentary Rocks	
Quaternary	
QIV	Recent sediments: alluvial deposits: gravels, sand, silt and clay
QIV	Non segmented sediments: conglomerate, gravel, sand, loam
QIII-IV	Upper - Recent sediments: alluvial and colluvial deposits: gravels, sand, silt and clay
QIII-IV	basalt with olivine-pyroxene.
Plutonic Rocks	
Permian to Triassic	
γ 2P2-11s	Selenge Complex: granite.
γ 2P2-11s	Selenge Complex: granite to syenite.
Devonian	
ε 1 γ 702	Medium grained biotite granite, alkali feldspar, granite, Second phase
Paleozoic	
γ 2P21	Biotite granite, plagioclase-granite.
γ 2P21	Adamellite, granodiorite, tonalite.
γ 2P21	Adamellite, granodiorite, tonalite.
Structure	
	Fault
Mineralization	
	Mineral showing
	Section line

Geological Map in the Undrak area (1:50,000)



**LEGEND**

Sedimentary Rocks	
Quaternary	
QIV	Recent sediments: alluvial deposits: gravels, sand, silt and clay
QIV	Recent sediments: gravel, sand.
QIII-IV	Upper - Recent sediments: alluvial and colluvial deposits: gravels, sand, silt and clay
Plutonic Rocks	
Permian to Triassic	
γ 2P2-11s	Selenge Complex: granite.
Paleozoic	
γ 2P21	Adamellite, granodiorite, tonalite.
Structure	
	Fault
Mineralization	
	Mineral showing
	Section line

Geological Map in the Undrak area (1:25,000)