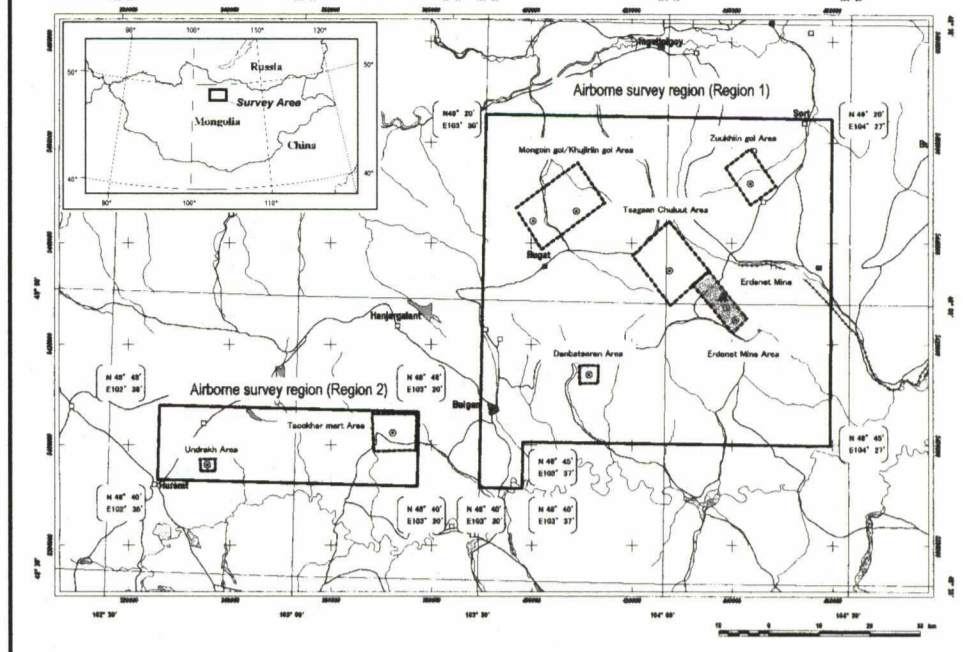
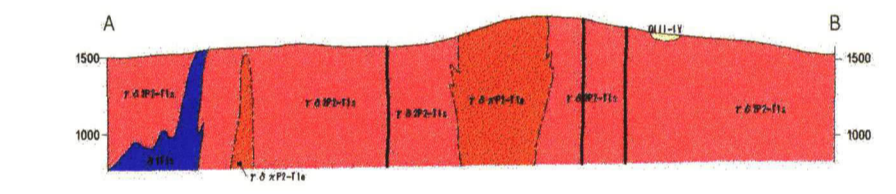
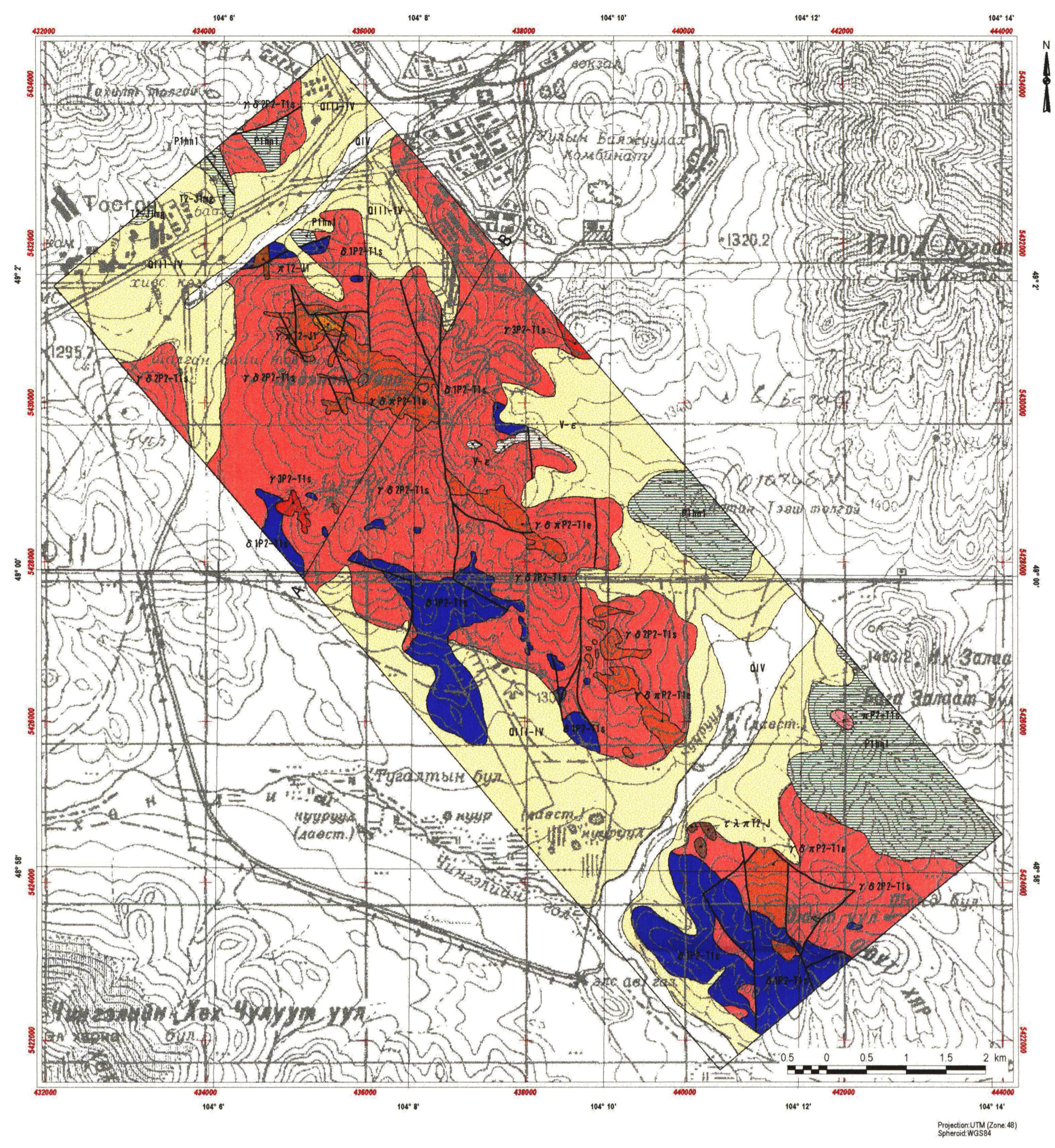


REPORT ON THE MINERAL EXPLORATION  
IN THE WESTERN ERDENET AREA, MONGOLIA  
PHASE I

Geological maps, geologic sections and mineral showings of the Erdenet Mine area (1:50,000), (1:25,000)



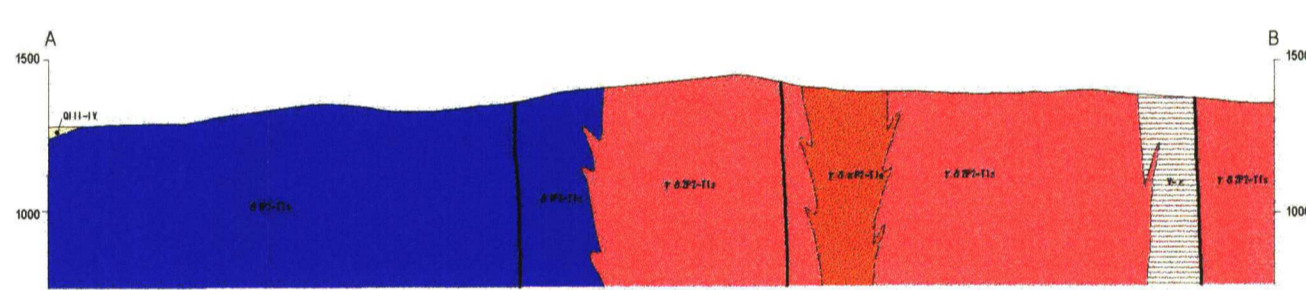
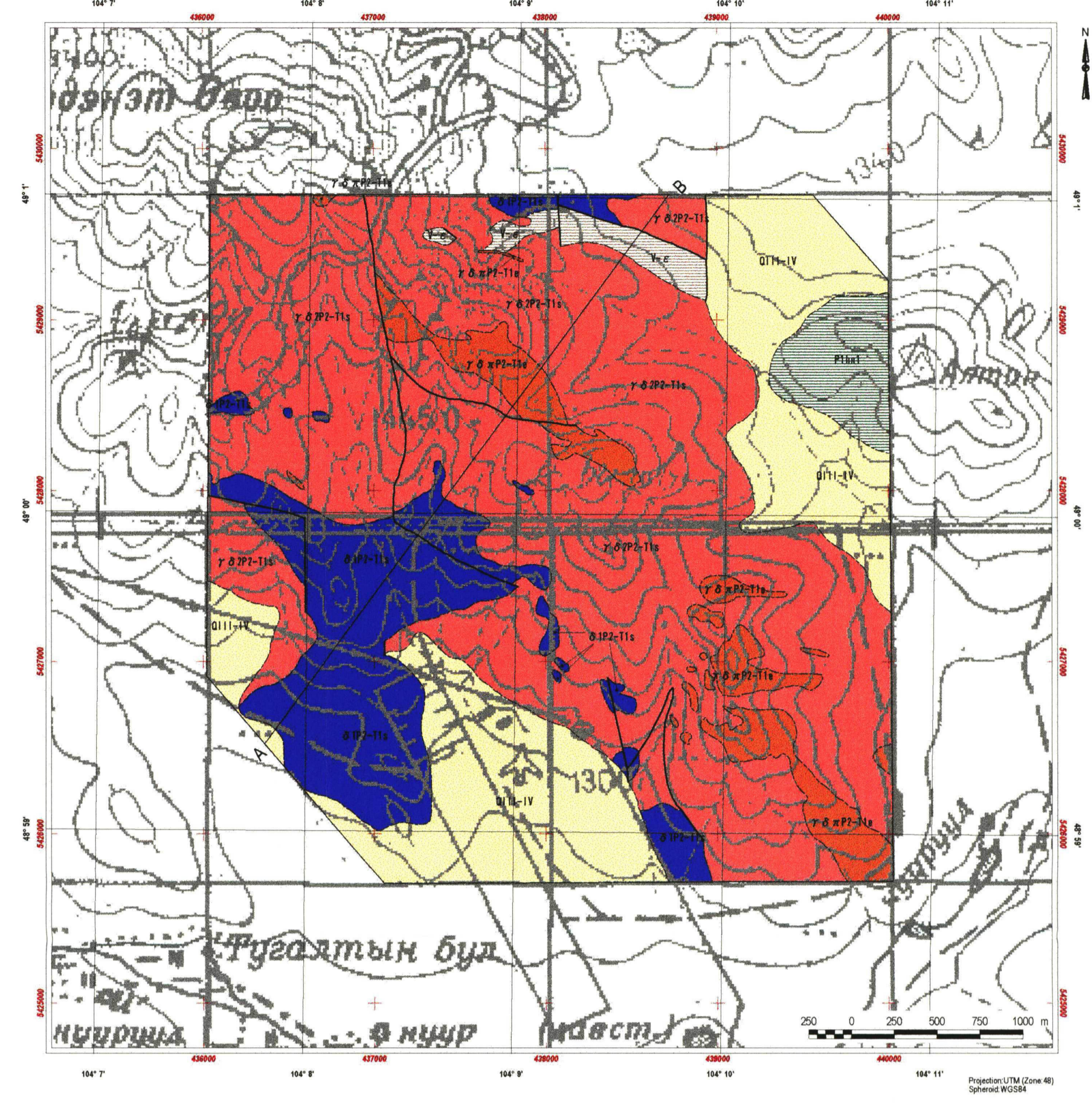
JAPAN INTERNATIONAL COOPERATION AGENCY  
METAL MINING AGENCY OF JAPAN  
FEBRUARY, 2002



**LEGEND**

Sedimentary Rocks	
Quaternary	QIV - Recent sediments: alluvial deposits: gravels, sand, silt and clay
	QIII-IV - Upper - Recent sediments: alluvial and colluvial deposits: gravels, sand, silt and clay
Triassic to Jurassic	T2-J1a2 - Mogod suite: volcanic rocks and dykes: microdiorite, andesite, porphyry, iparite, dacite and sulfurous conglomerate
Permian	P1a1 - Lower Hanuigal Formation: volcanic rock and dyke of basalt, andesite, dacite and iparite.
	Y-c - Late Riphean Early Cambrian undivided: amphibolite, carbonate-chert, siliceous clayey, and sericite schist
Plutonic Rocks	
Triassic to Jurassic	πT2-J1 - Porphyry
	π.λ.πT2-J - Andesite porphyry
	γ.πT2-J1 - Granite porphyry
Permian to Triassic	γ.δ.πP2-T1a - Erdenet Complex: granite-porphyry and plagioporphry
	πP2-T1a - Selenge Complex: granite-porphyry and plagioporphry
	γ.δP2-T1a - Selenge Complex: granite-porphyry and plagioporphry
	γ.δP2-T1b - Granite, and granodiorite
	δP2-T1a - Selenge Complex: diorite.
Structure	
	Fault
Mineralization	
	Mineral showing
	Section line

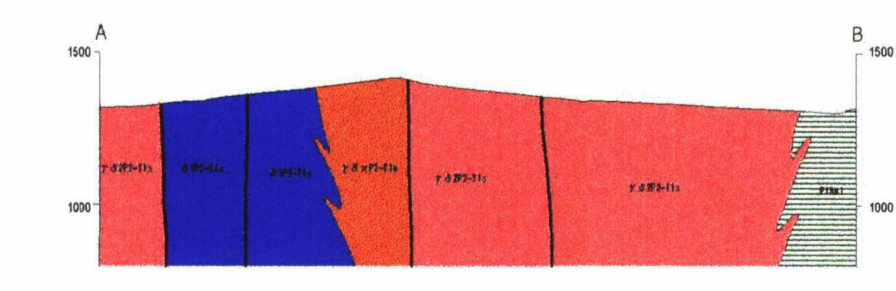
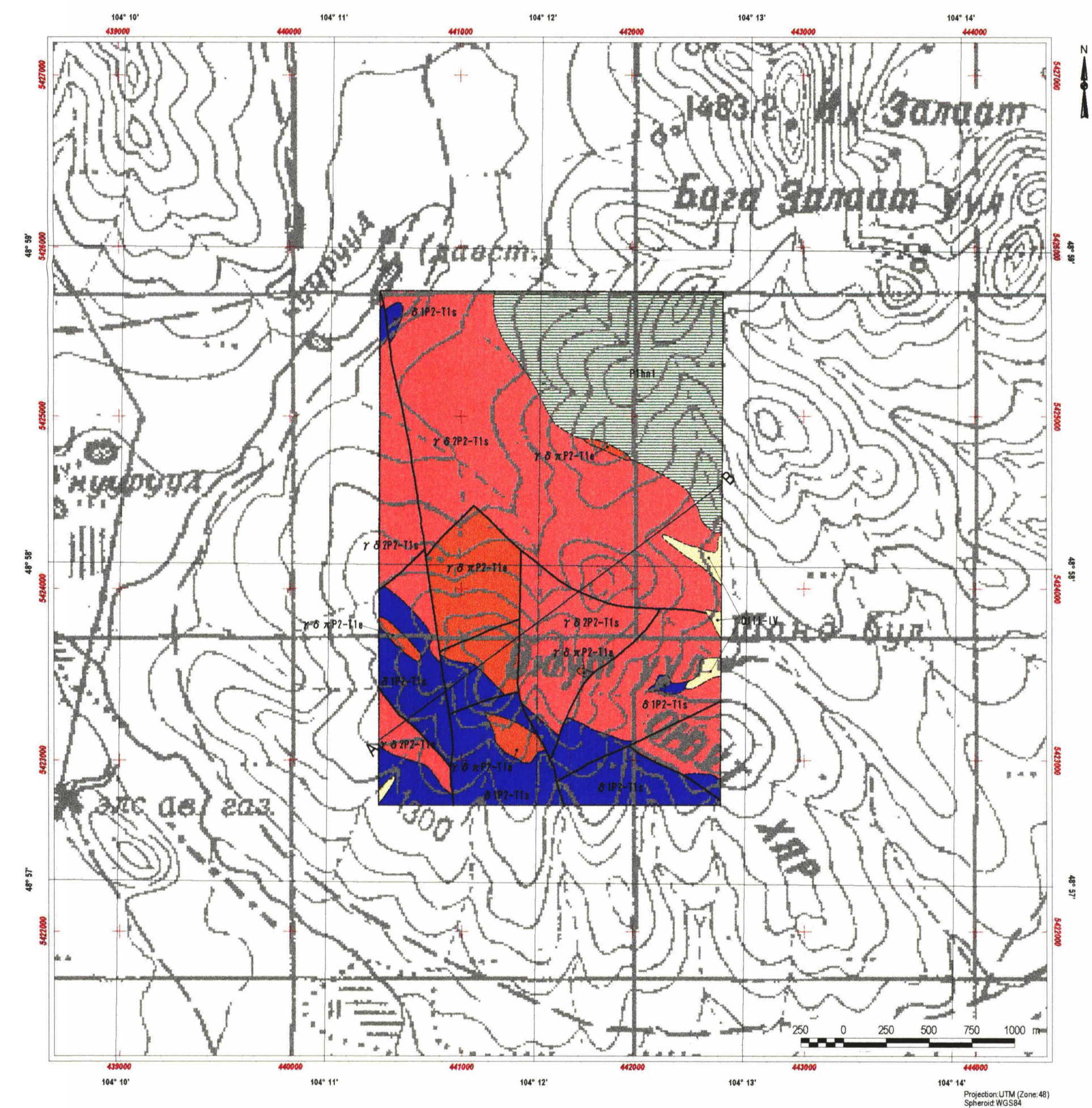
Geological Map in the Erdenet Mine area (1:50,000)



**LEGEND**

Sedimentary Rocks	
Quaternary	QIII-IV - Upper - Recent sediments: alluvial and colluvial deposits: gravels, sand, silt and clay
Permian	P1a1 - Lower Hanuigal Formation: volcanic rock and dyke of basalt, andesite, dacite and iparite.
	Y-c - Late Riphean Early Cambrian undivided: amphibolite, carbonate-chert, siliceous clayey, and sericite schist
Plutonic Rocks	
Permian to Triassic	γ.δ.πP2-T1a - Erdenet Complex: granite-porphyry and plagioporphry
	γ.δP2-T1a - Granite, and granodiorite
	δP2-T1a - Selenge Complex: diorite.
Structure	
	Fault
Mineralization	
	Mineral showing
	Section line

Geological Map in the Erdenet Central area (1:25,000)



**LEGEND**

Sedimentary Rocks	
Quaternary	QIII-IV - Upper - Recent sediments: alluvial and colluvial deposits: gravels, sand, silt and clay
Permian	P1a1 - Lower Hanuigal Formation: volcanic rock and dyke of basalt, andesite, dacite and iparite.
Plutonic Rocks	
Permian to Triassic	γ.δ.πP2-T1a - Erdenet Complex: granite-porphyry and plagioporphry
	γ.δP2-T1a - Granite, and granodiorite
	δP2-T1a - Selenge Complex: diorite.
Structure	
	Fault
Mineralization	
	Mineral showing
	Section line

Geological Map in the Erdenet Southeast area (1:25,000)