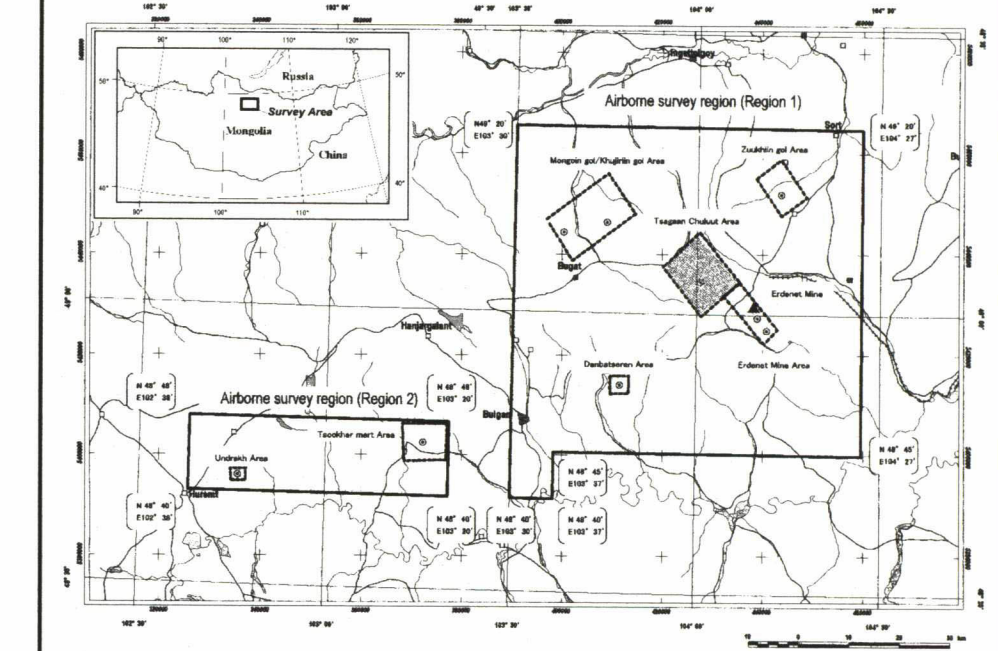
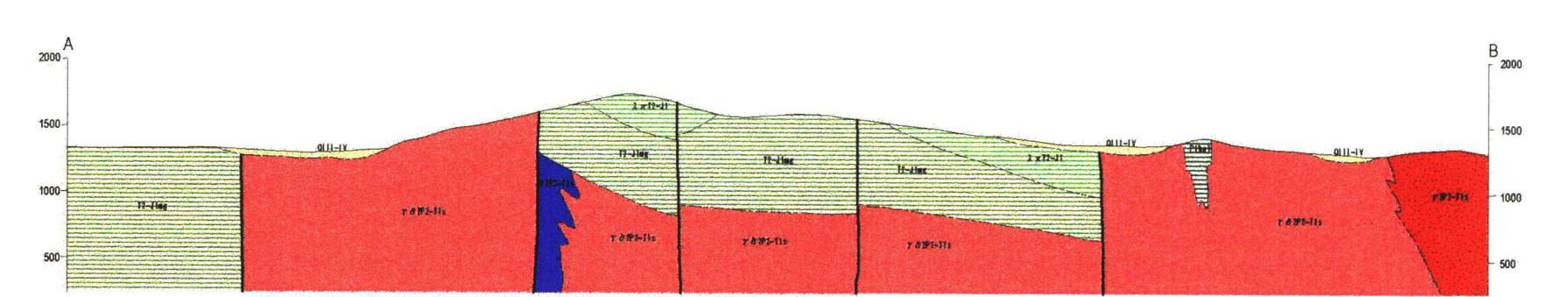
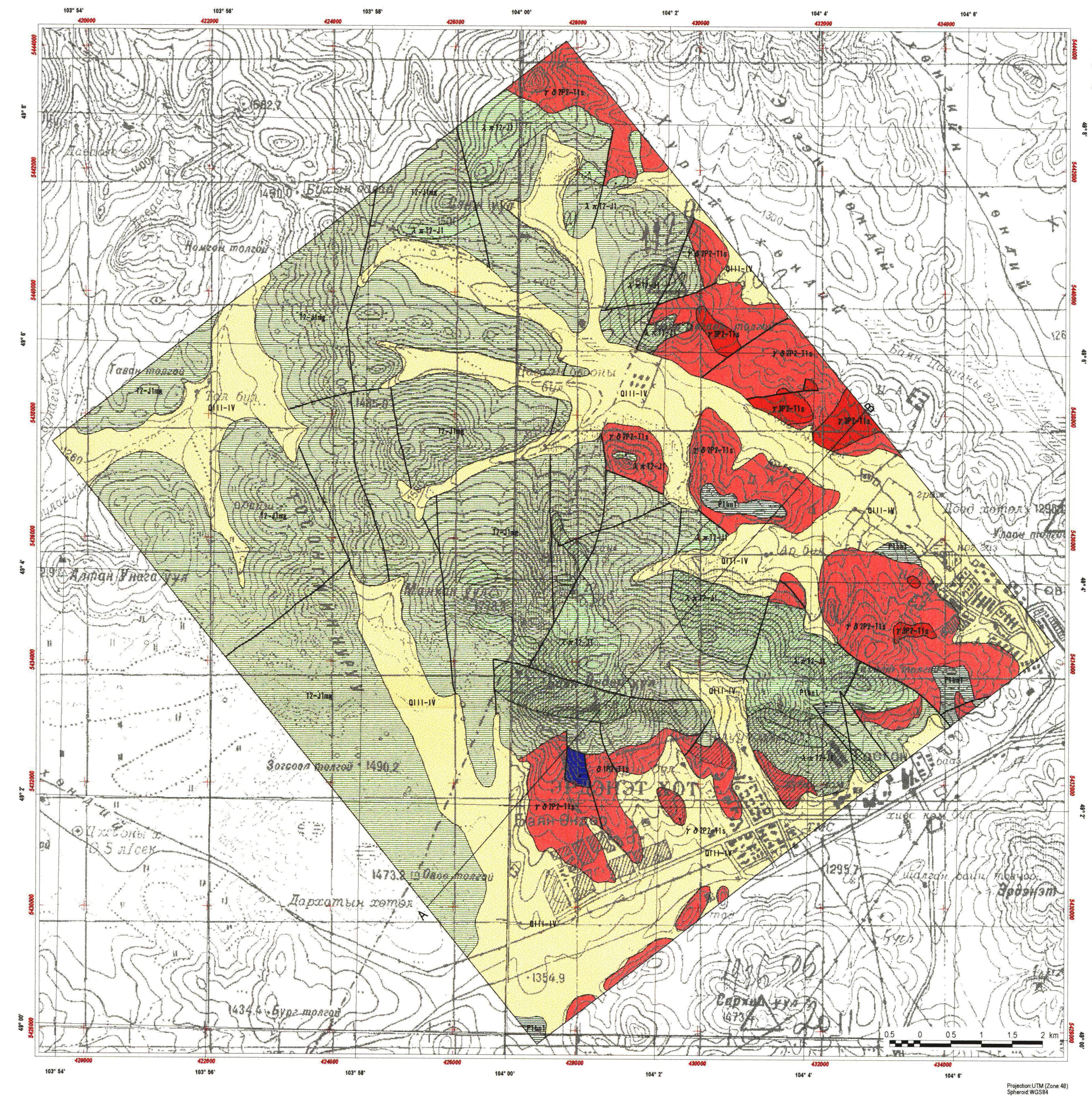


REPORT ON THE MINERAL EXPLORATION
IN THE WESTERN ERDENET AREA, MONGOLIA
PHASE I

Geological maps, geologic sections and mineral showings of the Tsagaan Chuluut area
(1:50,000), (1:25,000)



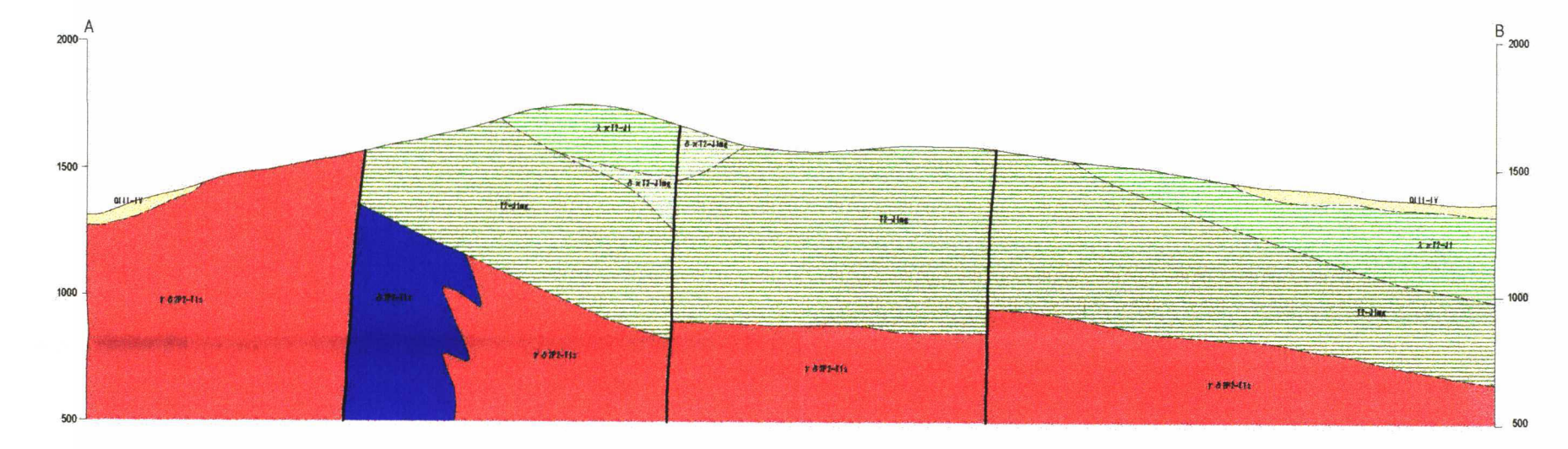
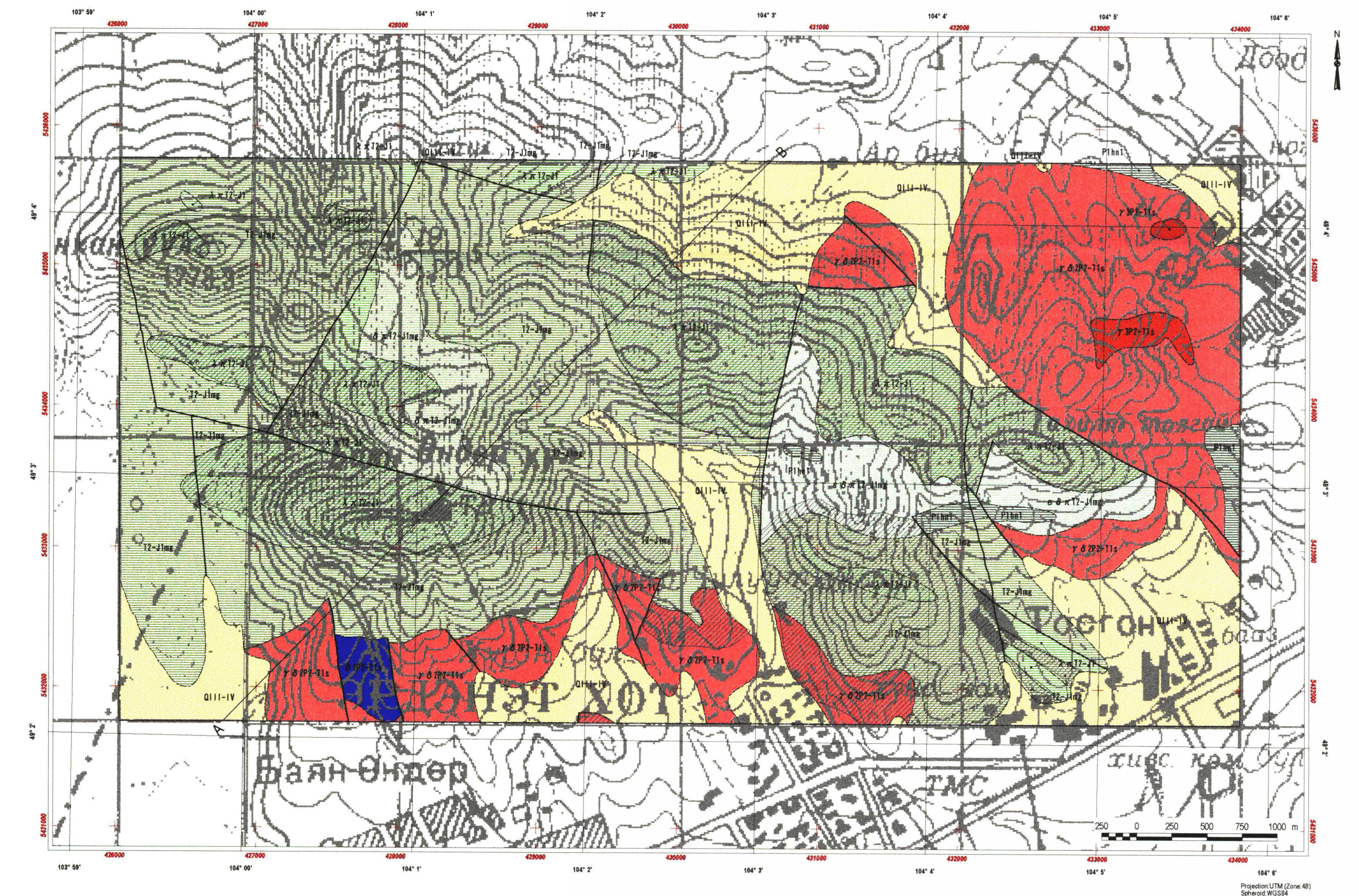
JAPAN INTERNATIONAL COOPERATION AGENCY
METAL MINING AGENCY OF JAPAN
FEBRUARY, 2002



LEGEND

| | |
|--------------------------|--|
| Sedimentary Rocks | |
| Quaternary | Q11-IV Upper - Recent sediments; alluvial and colluvial deposits: gravels, sand, silt and clay |
| Triassic to Jurassic | λ x T1-II Mogod suite: volcanic rocks and dykes: porphyry, liparite and dacite |
| | T1-J-lng Mogod suite: volcanic rocks and dykes: microdiorite, andesite, porphyry, liparite, dacite and tuffaceous conglomerate |
| Permian | P1a-l Lower Hanuigol Formation: volcanic rock and dyke of basalt, andesite, dacite and liparite |
| Plutonic Rocks | |
| Permian to Triassic | γ SP1-T1s Selenge Complex: Lower Triassic: fine grained granodiorite porphyry |
| | γ δ SP1-T1s Selenge Complex: Lower Triassic: fine grained granodiorite porphyry |
| | δ SP2-T1s Selenge Complex: diorite |
| Structure | |
| | Fault |
| Alteration | |
| | Alteration Zone: silicification, sericitization, chloritization |
| Mineralization | |
| | Mineral showing |
| | Section line |

Geological Map in the Tsagaan Chuluut area (1:50,000)



LEGEND

| | |
|--------------------------|--|
| Sedimentary Rocks | |
| Quaternary | Q11-IV Upper - Recent sediments; alluvial and colluvial deposits: gravels, sand, silt and clay |
| Triassic to Jurassic | λ x T1-II-lng Mogod suite: volcanic rocks and dykes: porphyry, liparite and dacite |
| | δ x T1-J-lng Mogod suite: volcanic rocks and dykes: porphyry, liparite and dacite |
| Permian | T1-J-lng Mogod suite: volcanic rocks and dykes: microdiorite, andesite, porphyry, liparite, dacite and tuffaceous conglomerate |
| | λ x T1-II Mogod suite: volcanic rocks and dykes: porphyry, liparite and dacite |
| Permian | P1a-l Lower Hanuigol Formation: volcanic rock and dyke of basalt, andesite, dacite and liparite |
| Plutonic Rocks | |
| Permian to Triassic | γ SP1-T1s Selenge Complex: Lower Triassic: fine grained granite porphyry |
| | γ δ SP1-T1s Selenge Complex: Lower Triassic: fine grained granodiorite porphyry |
| | δ SP2-T1s Selenge Complex: diorite |
| Structure | |
| | Fault |
| Alteration | |
| | Alteration Zone: silicification, sericitization, chloritization |
| Mineralization | |
| | Mineral showing |
| | Section line |

Geological Map in the Tsagaan Chuluut area (1:25,000)