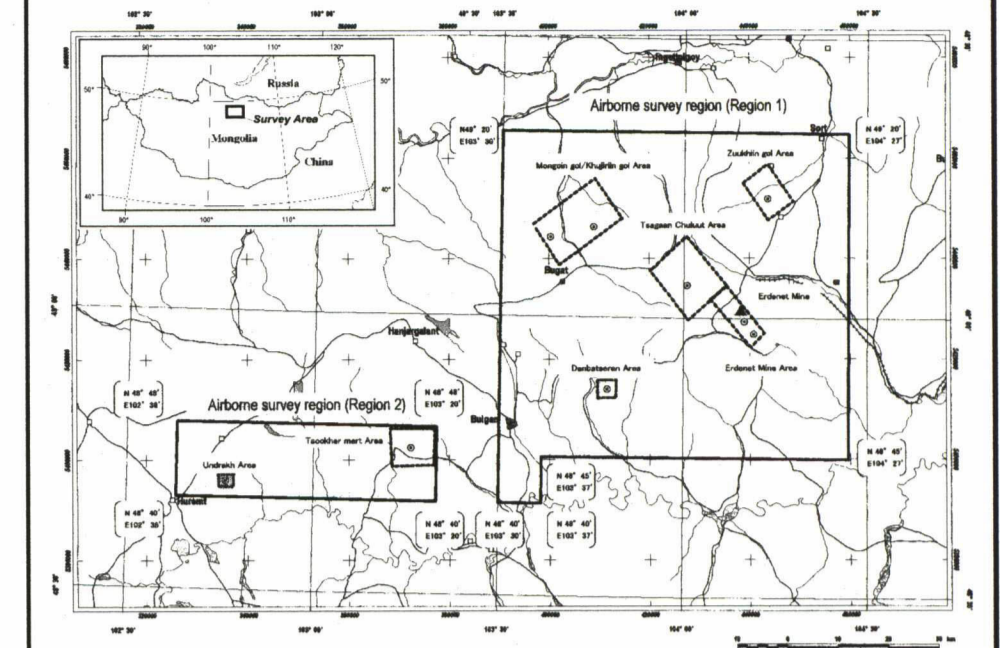
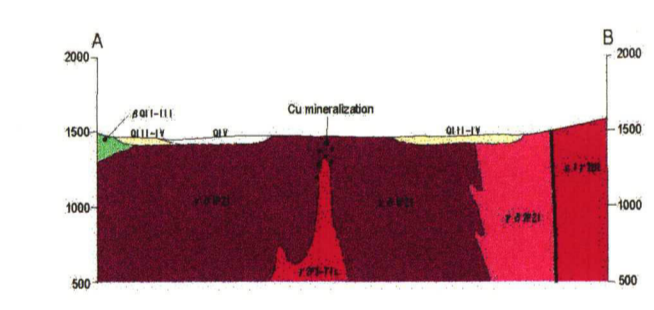
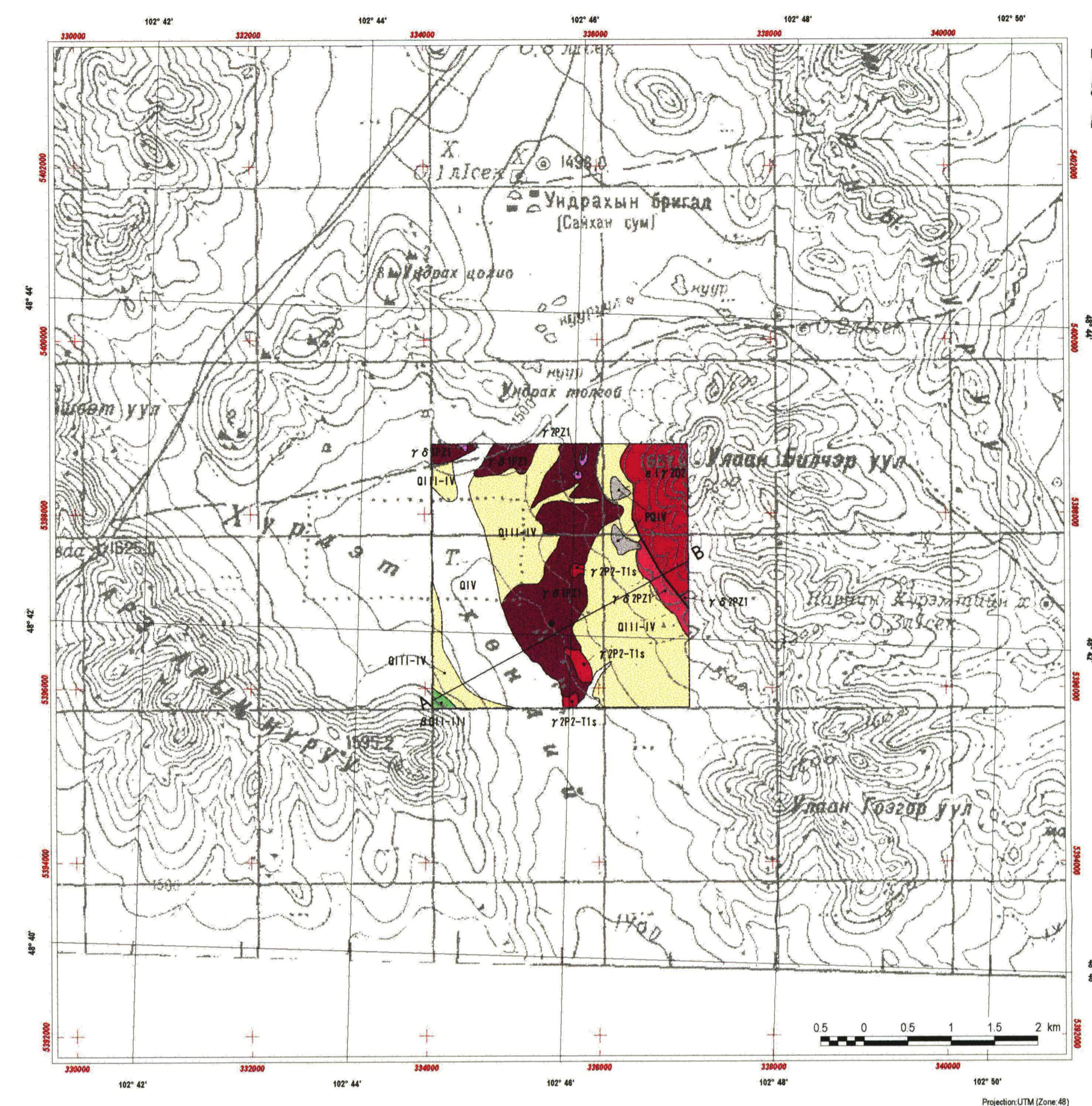


REPORT ON THE MINERAL EXPLORATION
IN THE WESTERN ERDENET AREA, MONGOLIA
PHASE I

Geological maps, geologic sections and mineral
showings of the Undrak area
(1:50,000), (1:25,000)



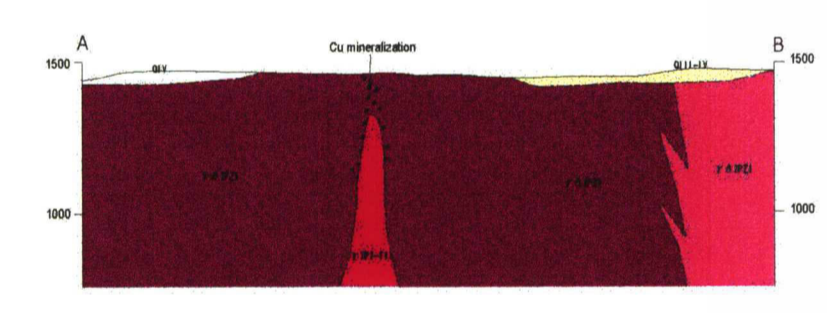
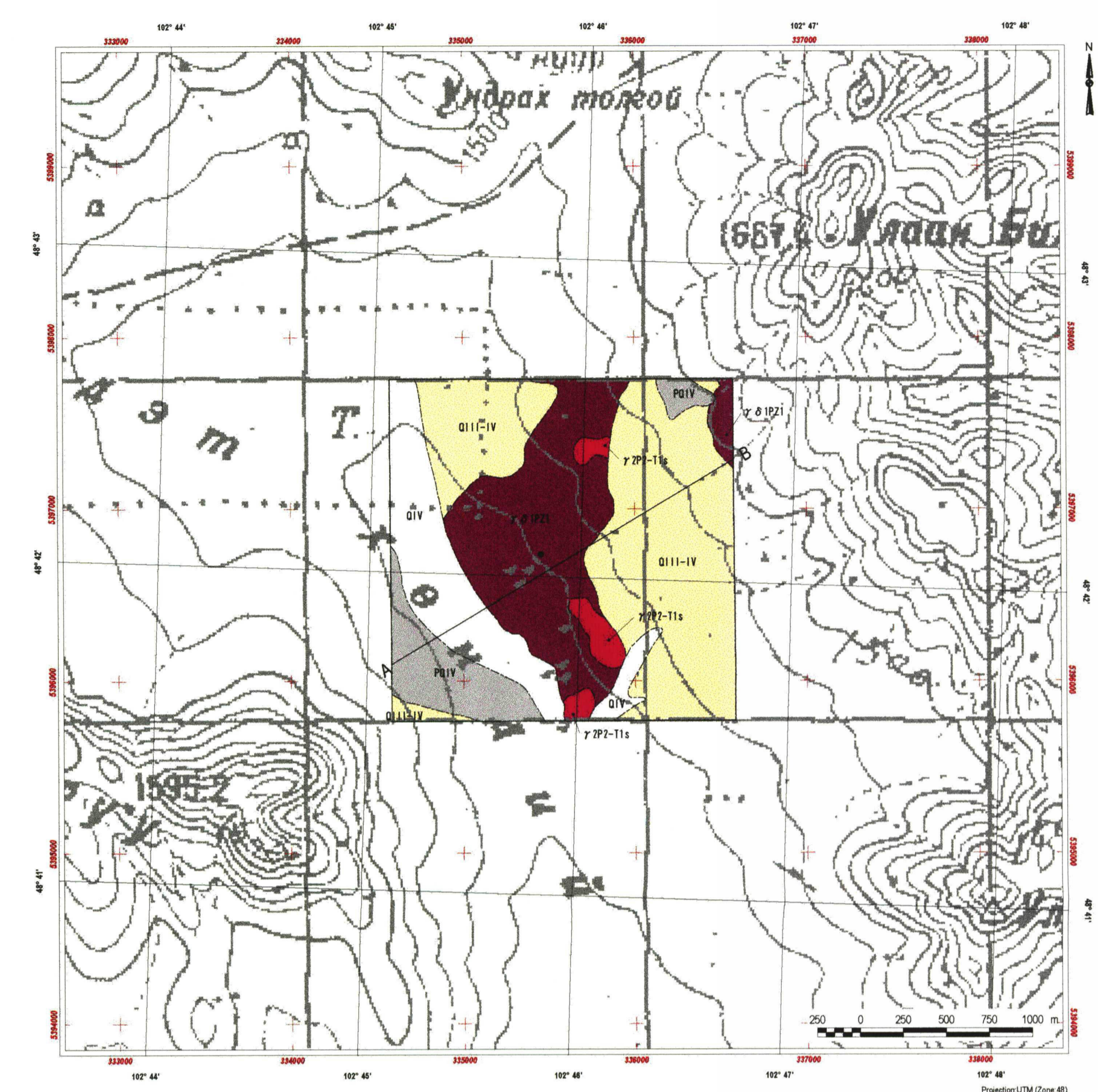
JAPAN INTERNATIONAL COOPERATION AGENCY
METAL MINING AGENCY OF JAPAN
FEBRUARY, 2002



LEGEND

Sedimentary Rocks	
Quaternary	QIV Recent sediments: alluvial deposits: gravels, sand, silt and clay
	QIV Non segmented sediments: conglomerate, gravel, sand, loam
	QIII-IV Upper - Recent sediments: alluvial and colluvial deposits: gravels, sand, silt and clay
	βBII-III basalt with olivine-pyroxene.
Plutonic Rocks	
Permian to Triassic	γ 192-11s Selenge Complex: granite.
	γ & 192-11s Selenge Complex: granite to syenite.
Devonian	ε 17302 Medium grained biotite granite, alkaline alaskite, granite. Second phase.
Paleozoic	γ 1921 Biotite granite, plagioclase-granite.
	γ & 1921 Adamellite, granodiorite, tonalite.
	γ & 1921 Adamellite, granodiorite, tonalite.
Structure	
	Fault
Mineralization	
	Mineral showing.
	Section line

Geological Map in the Undrak area (1:50,000)



LEGEND

Sedimentary Rocks	
Quaternary	QIV Recent sediments: alluvial deposits: gravels, sand, silt and clay
	QIV Recent sediments: gravel, sand.
	QIII-IV Upper - Recent sediments: alluvial and colluvial deposits: gravels, sand, silt and clay
Plutonic Rocks	
Permian to Triassic	γ 192-11s Selenge Complex: granite.
Paleozoic	γ & 1921 Adamellite, granodiorite, tonalite.
Structure	
	Fault
Mineralization	
	Mineral showing.
	Section line

Geological Map in the Undrak area (1:25,000)