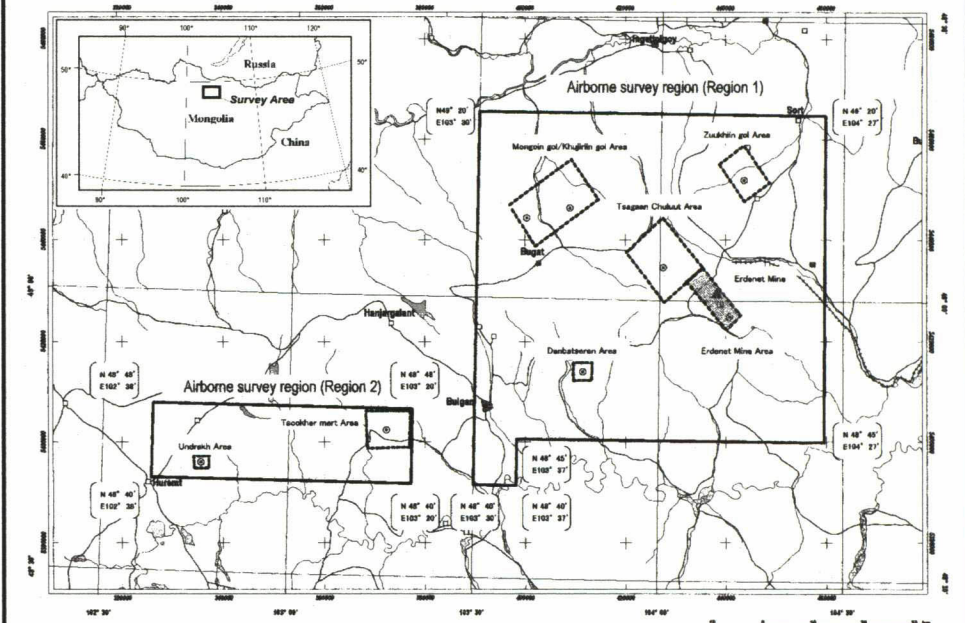
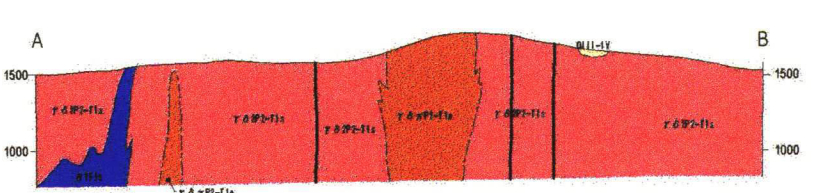
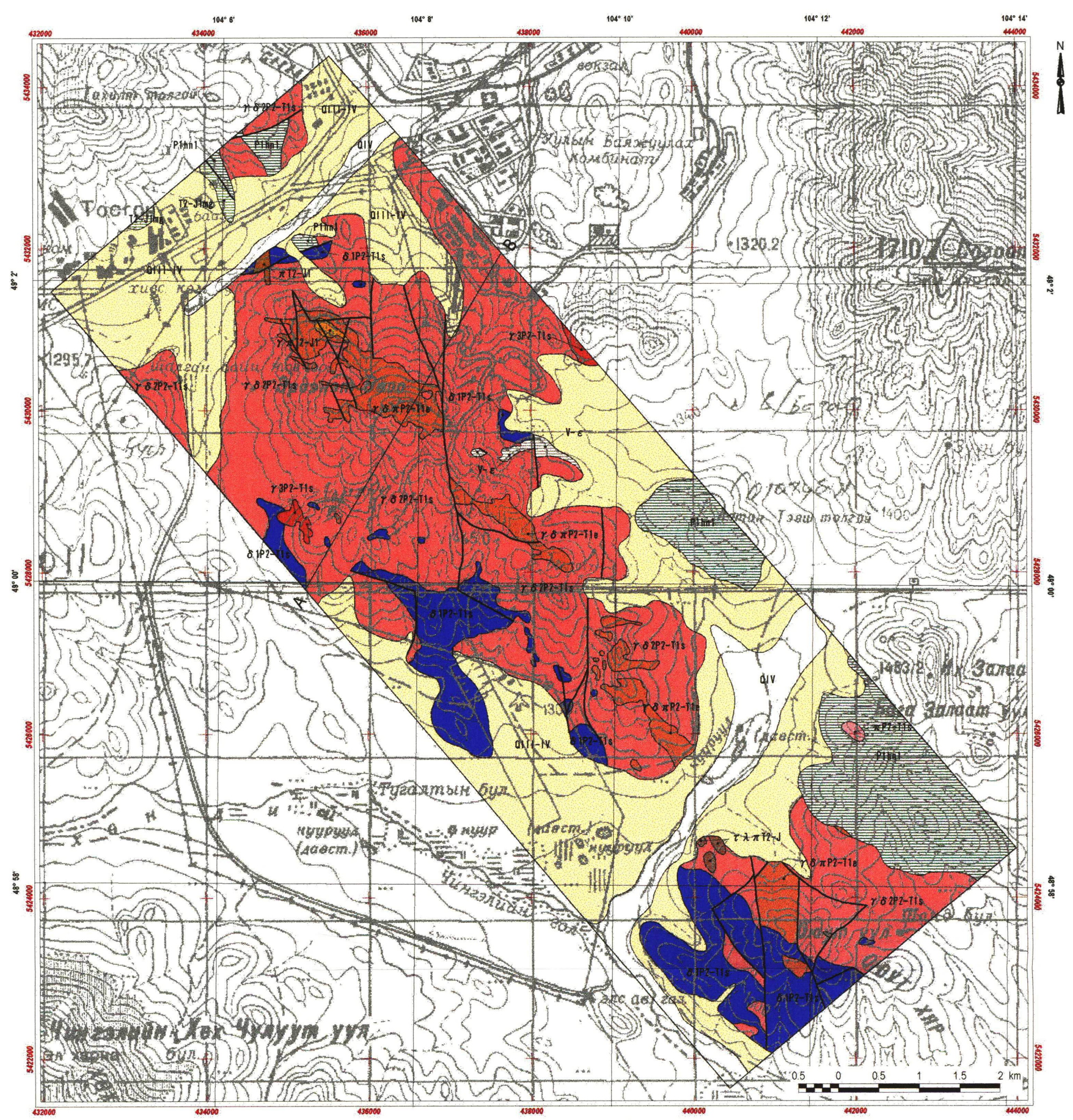


REPORT ON THE MINERAL EXPLORATION  
IN THE WESTERN ERDENET AREA, MONGOLIA  
PHASE I

Geological maps, geologic sections and mineral  
showings of the Erdenet Mine area  
(1:50,000), (1:25,000)



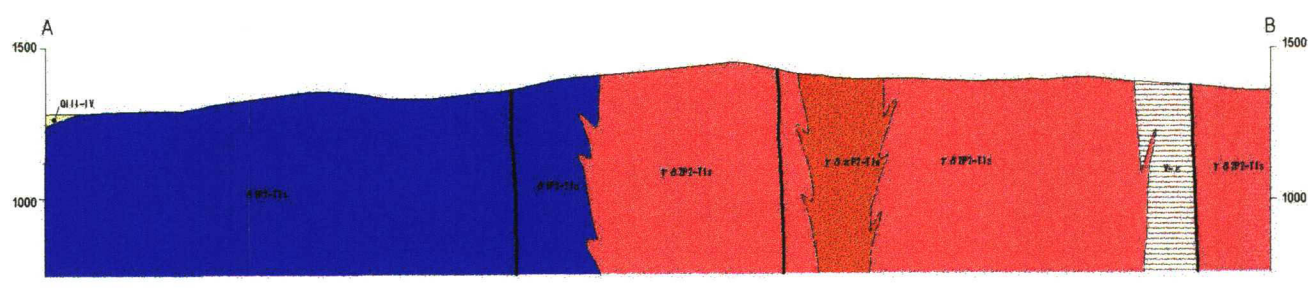
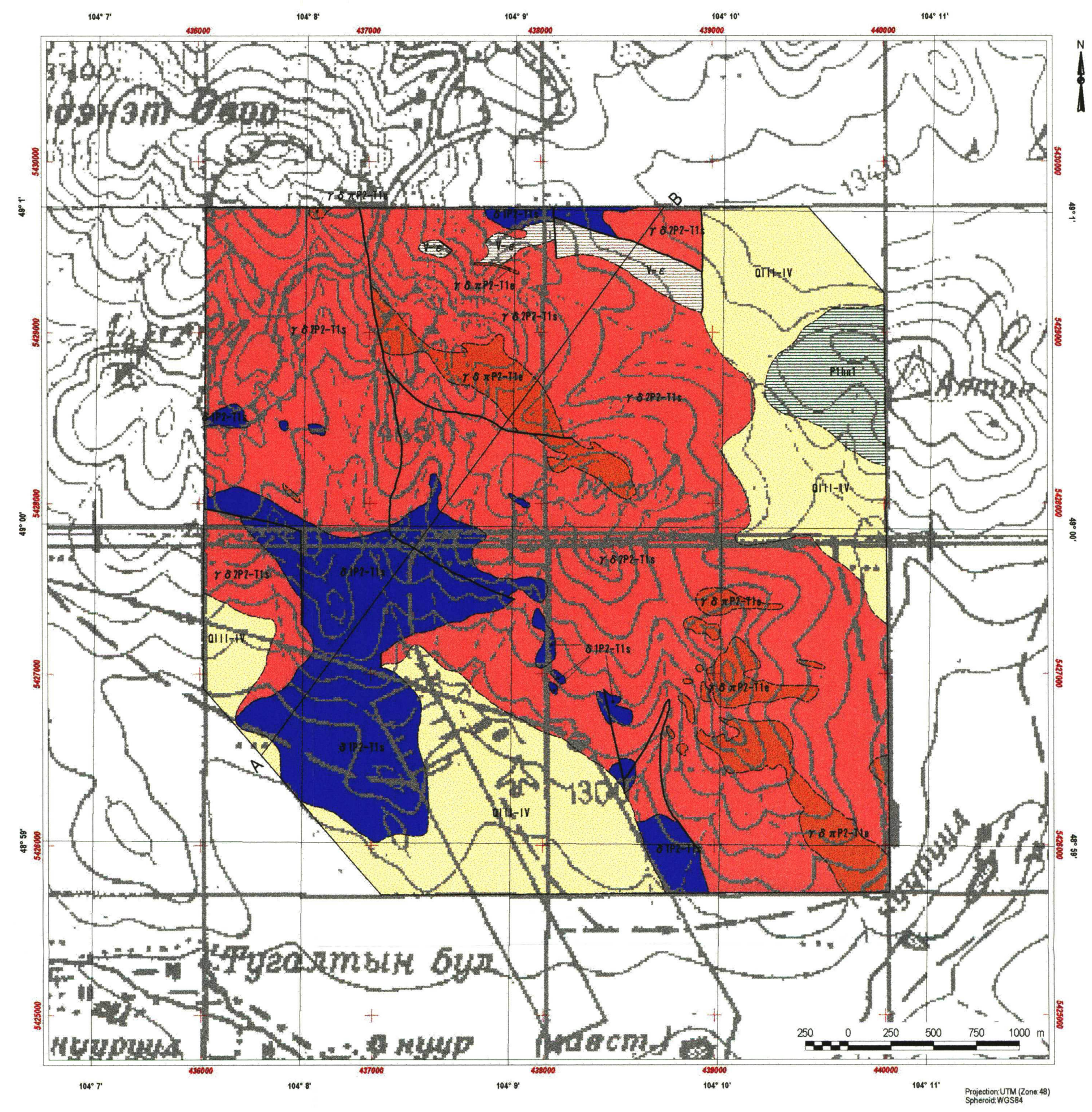
JAPAN INTERNATIONAL COOPERATION AGENCY  
METAL MINING AGENCY OF JAPAN  
FEBRUARY, 2002



**LEGEND**

Sedimentary Rocks		
Quaternary	Q1V	Recent sediments: alluvial deposits: gravels, sand, silt and clay
	Q11-IV	Upper - Recent sediments; alluvial and colluvial deposits: gravels, sand, silt and clay
Triassic to Jurassic	T3-J1m	Mogod suite: volcanic rocks and dykes: microdiorite, andesite, porphyry, sparte, dacite and tuffaceous conglomerata.
Permian	P1a1	Lower Hanuigol Formation: volcanic rock and dyke of basalt, andesite, dacite and sparte.
	Y-z	Late Riphean Early Cambrian undivided: amphibolite, carbonate-chlorite, siliceous clayey, and sericite schist
Plutonic Rocks		
Triassic to Jurassic	xT1-21	Porphyry
	r x xT2-2	Andesite porphyry
	r xT2-21	Granite porphyry
Permian to Triassic	γ δ xP2-11a	Erdenet Complex: granite-porphyry and plagioporphyry
	xP2-11a	Selenge Complex: granite-porphyry and plagioporphyry
	γ P2-11a	Selenge Complex: granite-porphyry and plagioporphyry
	γ δ P2-11a	Granite, and granodiorite
	δ P2-11a	Selenge Complex: diorite.
Structure		
	(Symbol)	Fault
Mineralization		
	(Symbol)	Mineral showing
	(Symbol)	Section line

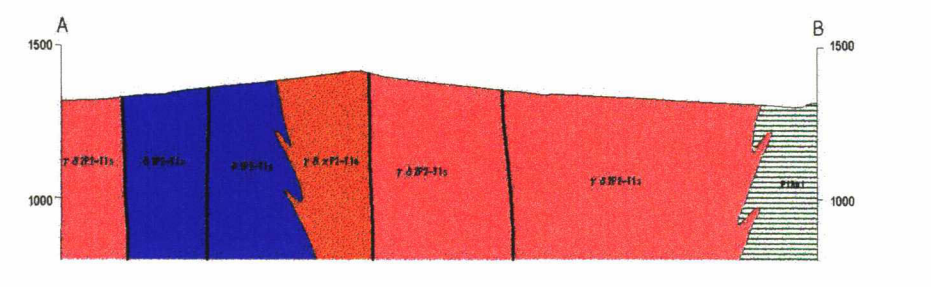
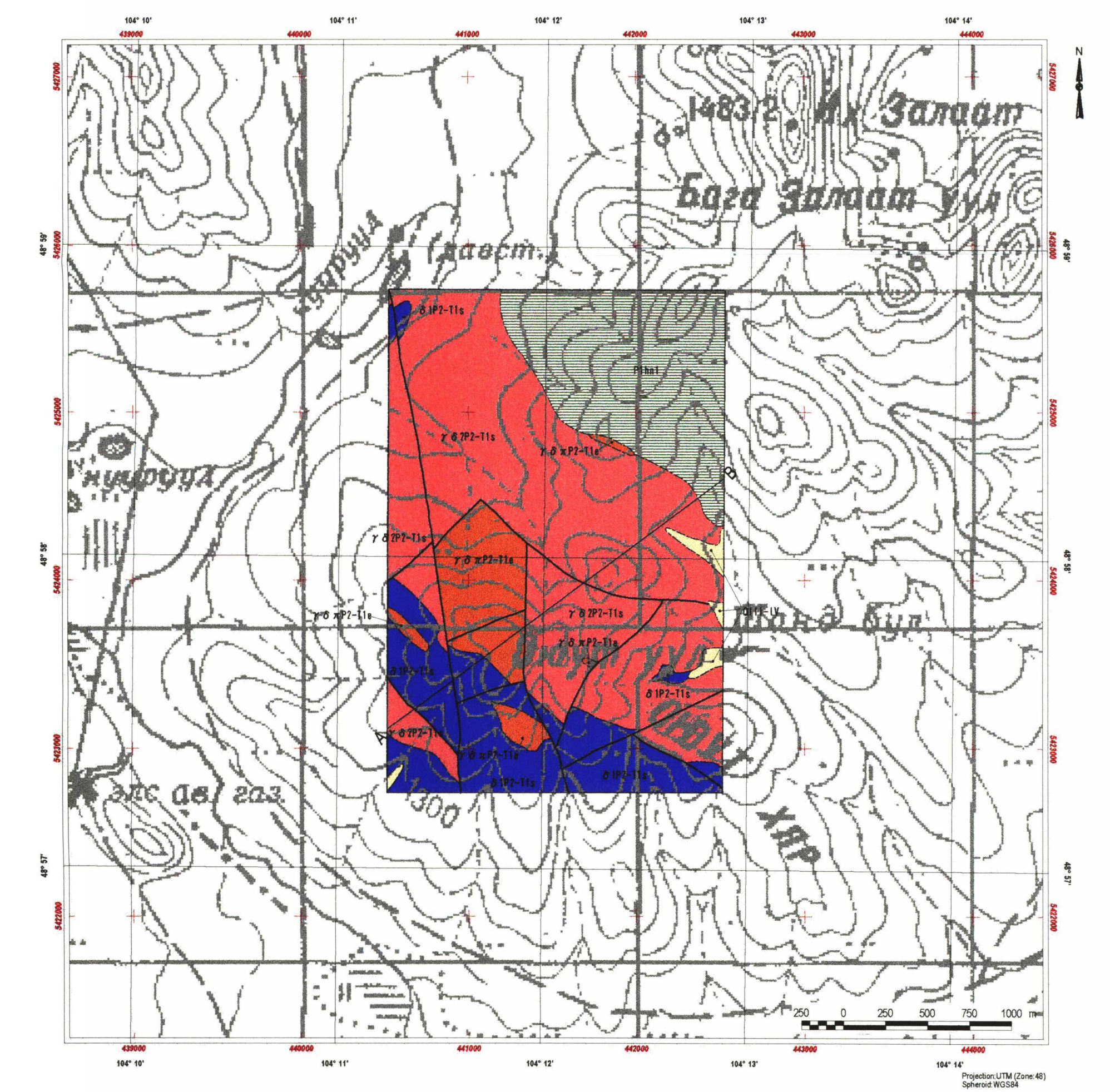
Geological Map in the Erdenet Mine area (1:50,000)



**LEGEND**

Sedimentary Rocks		
Quaternary	Q11-IV	Upper - Recent sediments; alluvial and colluvial deposits: gravels, sand, silt and clay
Permian	P1a1	Lower Hanuigol Formation: volcanic rock and dyke of basalt, andesite, dacite and sparte.
	Y-z	Late Riphean Early Cambrian undivided: amphibolite, carbonate-chlorite, siliceous clayey, and sericite schist
Plutonic Rocks		
Permian to Triassic	γ δ xP2-11a	Erdenet Complex: granite-porphyry and plagioporphyry
	γ δ P2-11a	Granite, and granodiorite
	δ P2-11a	Selenge Complex: diorite.
Structure		
	(Symbol)	Fault
Mineralization		
	(Symbol)	Mineral showing
	(Symbol)	Section line

Geological Map in the Erdenet Central area (1:25,000)



**LEGEND**

Sedimentary Rocks		
Quaternary	Q11-IV	Upper - Recent sediments; alluvial and colluvial deposits: gravels, sand, silt and clay
Permian	P1a1	Lower Hanuigol Formation: volcanic rock and dyke of basalt, andesite, dacite and sparte.
Plutonic Rocks		
Permian to Triassic	γ δ xP2-11a	Erdenet Complex: granite-porphyry and plagioporphyry
	γ δ P2-11a	Granite, and granodiorite
	δ P2-11a	Selenge Complex: diorite.
Structure		
	(Symbol)	Fault
Mineralization		
	(Symbol)	Mineral showing
	(Symbol)	Section line

Geological Map in the Erdenet Southeast area (1:25,000)