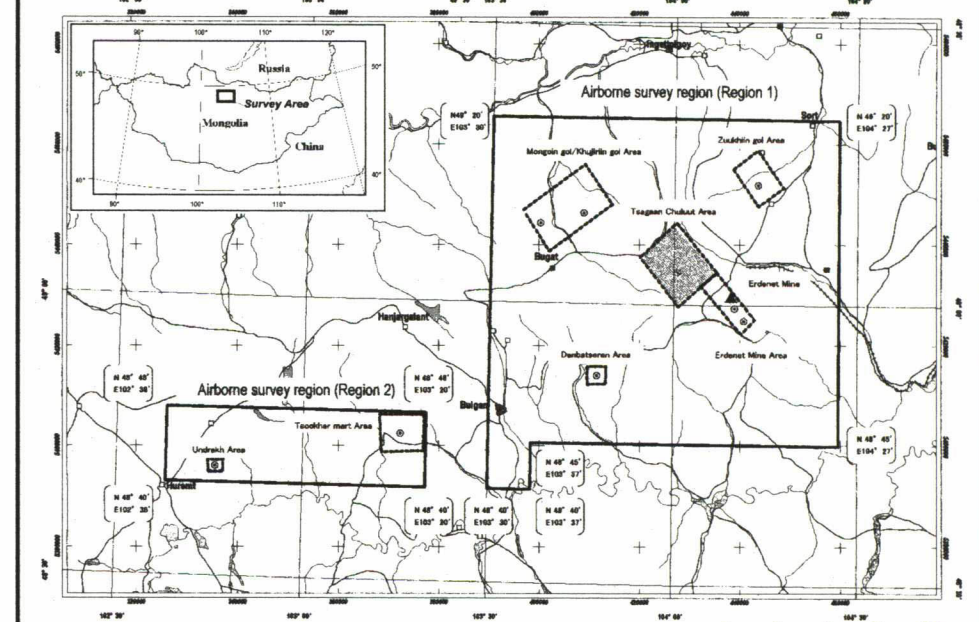
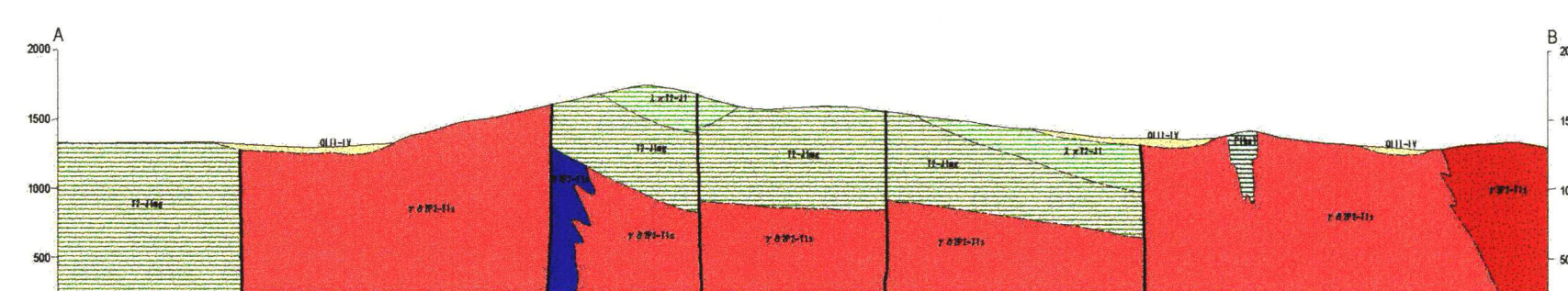
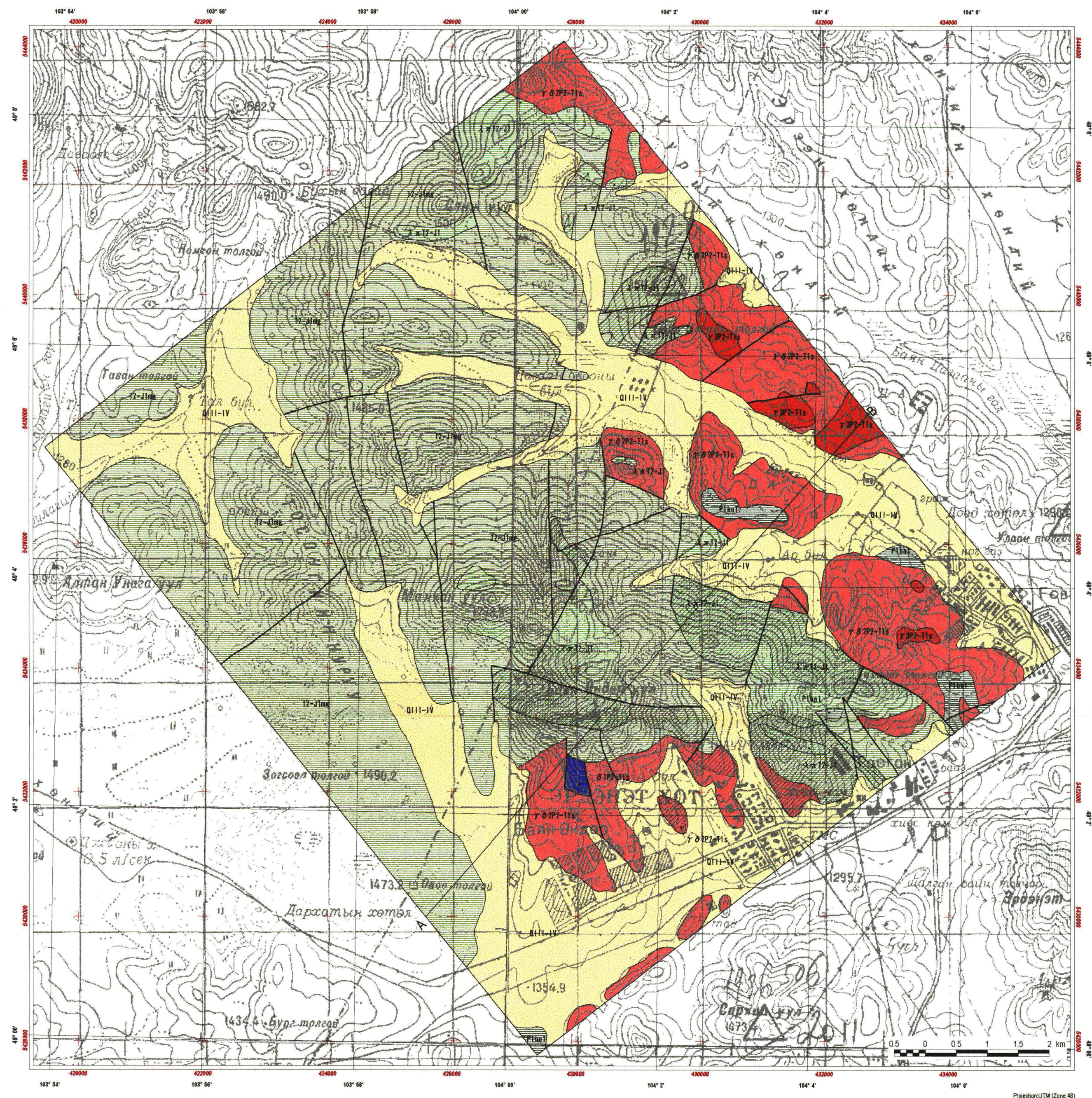


REPORT ON THE MINERAL EXPLORATION  
IN THE WESTERN ERDENET AREA, MONGOLIA  
PHASE I

Geological maps, geologic sections and mineral showings of the Tsagaan Chuluut area  
(1:50,000), (1:25,000)



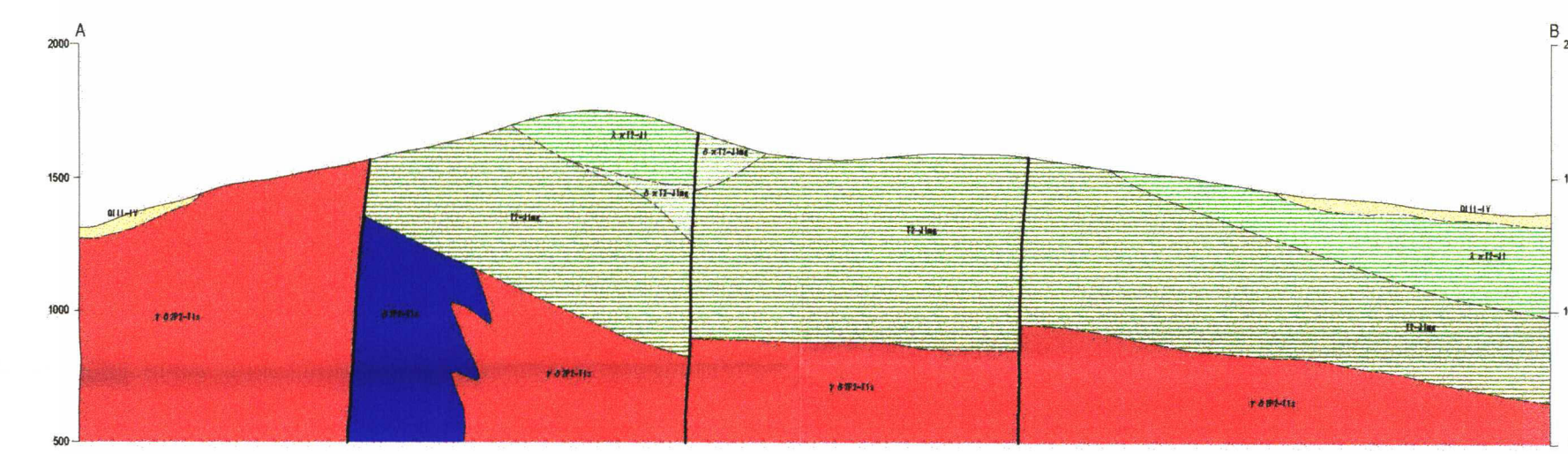
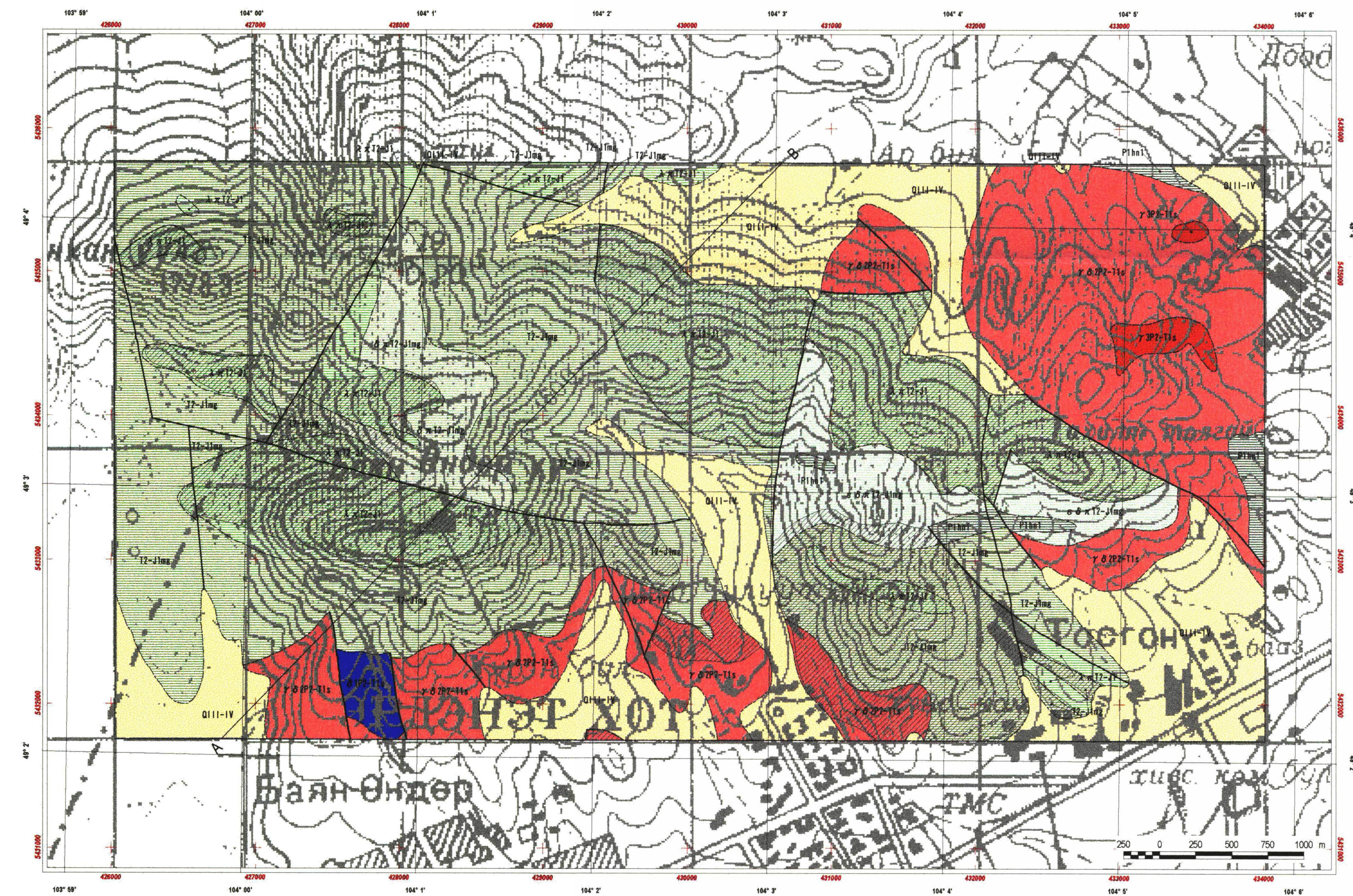
JAPAN INTERNATIONAL COOPERATION AGENCY  
METAL MINING AGENCY OF JAPAN  
FEBRUARY, 2002



**LEGEND**

Sedimentary Rocks	
Quaternary	Q11-IV Upper - Recent sediments; alluvial and colluvial deposits; gravels, sand, silt and clay
Triassic to Jurassic	T2-IV Mogod suite: volcanic rocks and dykes; porphyry, iparite and dacite.
	T2-IVa Mogod suite: volcanic rocks and dykes; microdiorite, andesite, porphyry, iparite, dacite and tuffaceous conglomerate.
Permian	P1a1 Lower Hanuigol Formation: volcanic rock and dyke of basalt, andesite, dacite and iparite.
Plutonic Rocks	
Permian to Triassic	T2-IVa Selenge Complex: Lower Triassic: fine grained granodiorite porphyry.
	T2-IVb Selenge Complex: Lower Triassic: fine grained granodiorite porphyry.
	P1a1 Selenge Complex: diorite.
Structure	
	Fault
Alteration	
	Alteration Zone: silicification, sericitization, chloritization
Mineralization	
	Mineral showing
	Section line

Geological Map in the Tsagaan Chuluut area (1:50,000)



**LEGEND**

Sedimentary Rocks	
Quaternary	Q11-IV Upper - Recent sediments; alluvial and colluvial deposits; gravels, sand, silt and clay
Triassic to Jurassic	T2-IV Mogod suite: volcanic rocks and dykes; porphyry, iparite and dacite.
	T2-IVa Mogod suite: volcanic rocks and dykes; microdiorite, andesite, porphyry, iparite, dacite and tuffaceous conglomerate.
Permian	P1a1 Lower Hanuigol Formation: volcanic rock and dyke of basalt, andesite, dacite and iparite.
Plutonic Rocks	
Permian to Triassic	T2-IVa Selenge Complex: Lower Triassic: fine grained granite porphyry.
	T2-IVb Selenge Complex: Lower Triassic: fine grained granodiorite porphyry.
	P1a1 Selenge Complex: diorite.
Structure	
	Fault
Alteration	
	Alteration Zone: silicification, sericitization, chloritization
Mineralization	
	Mineral showing
	Section line

Geological Map in the Tsagaan Chuluut area (1:25,000)