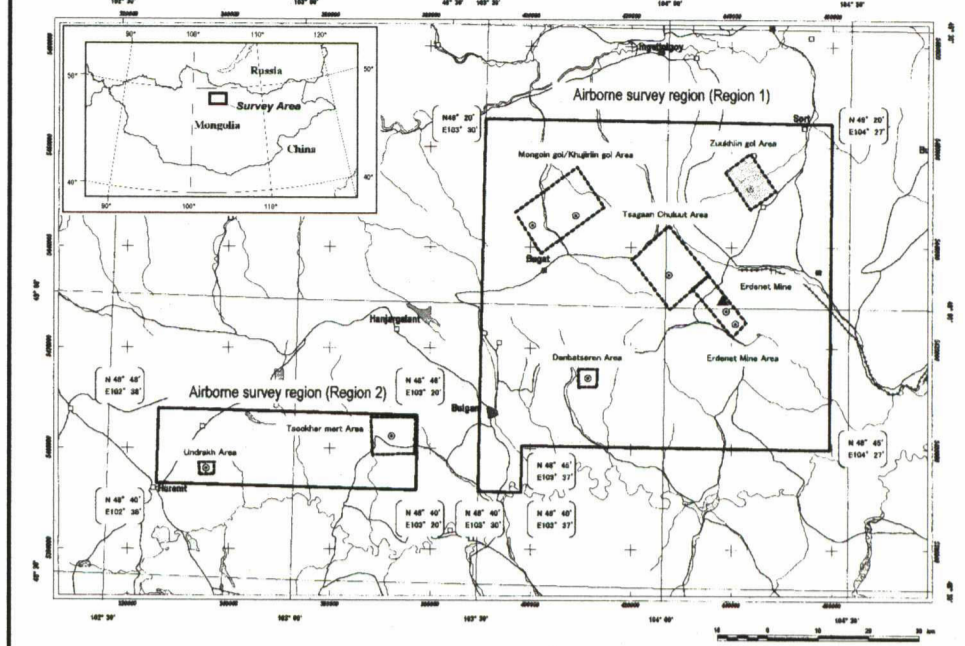
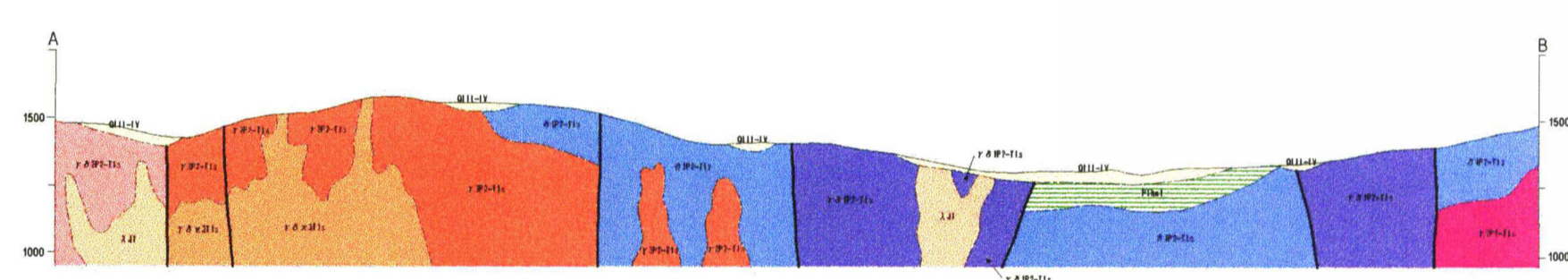
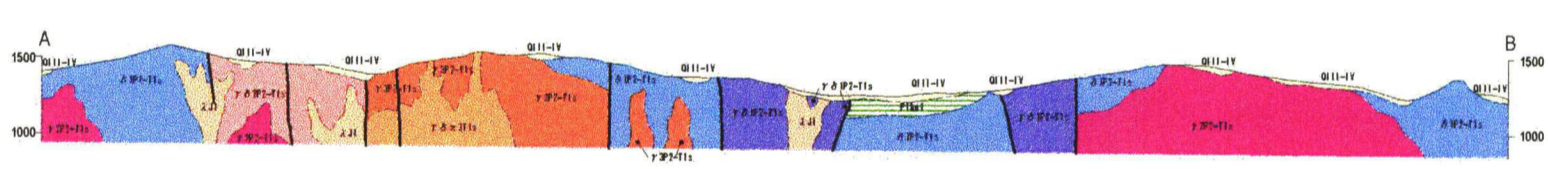
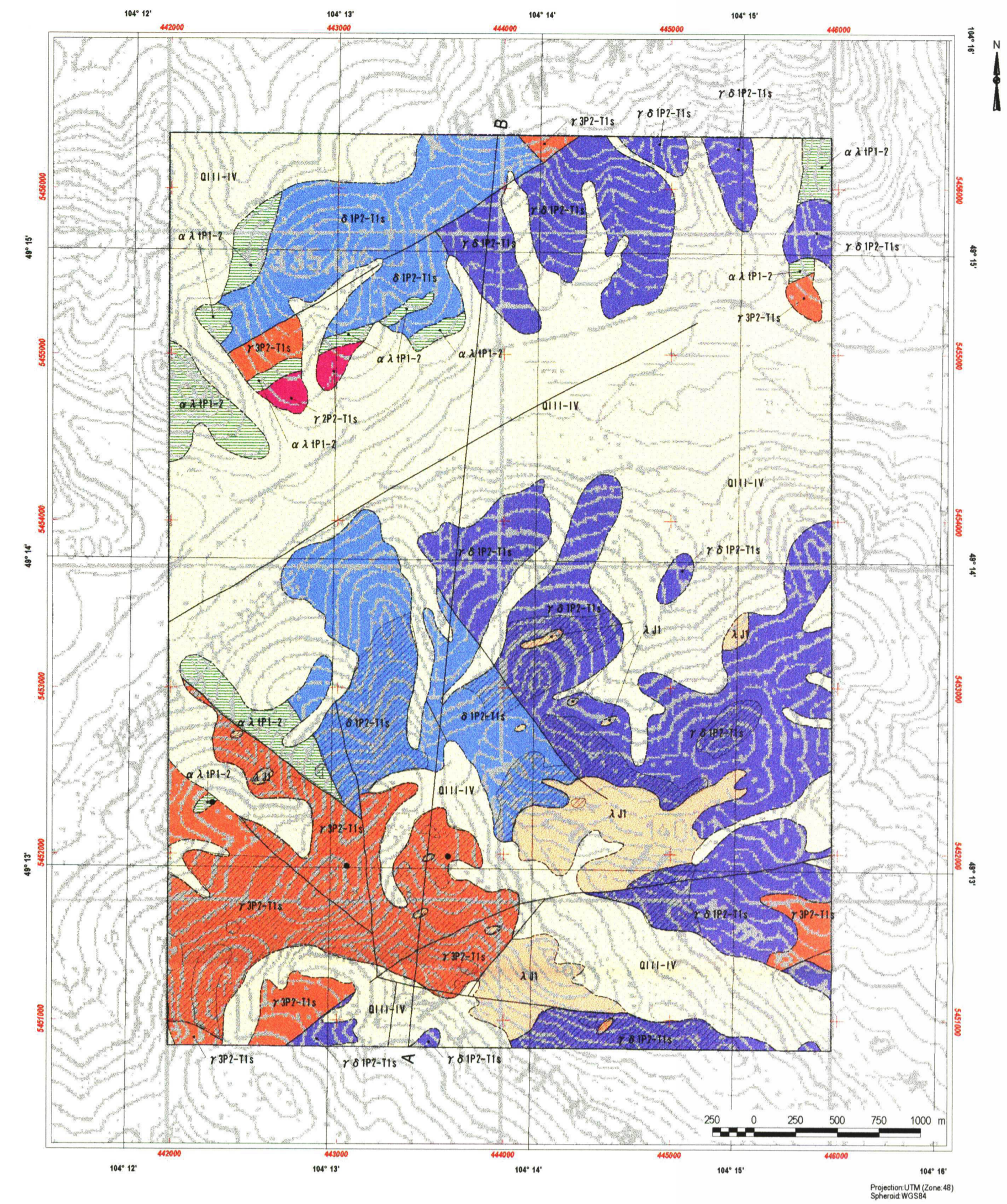
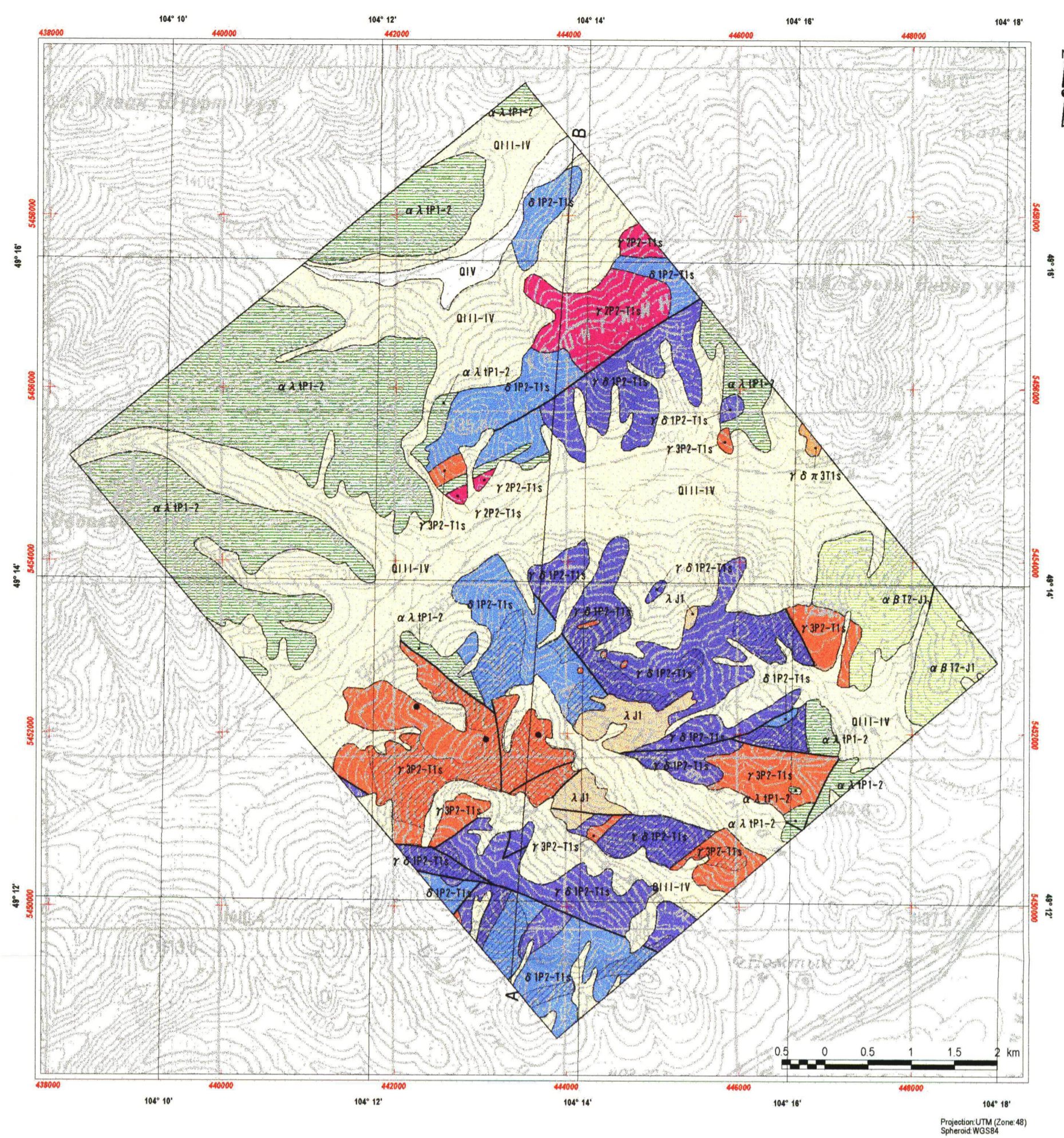


REPORT ON THE MINERAL EXPLORATION
IN THE WESTERN ERDENET AREA, MONGOLIA
PHASE I

Geological maps, geologic sections and mineral
showings of the Zuukhin gol area
(1:50,000), (1:25,000)



JAPAN INTERNATIONAL COOPERATION AGENCY
METAL MINING AGENCY OF JAPAN
FEBRUARY, 2002



LEGEND

Sedimentary Rocks	
Quaternary	QIV Recent sediments: alluvial deposits: gravels, sand, silt and clay
	QIII-IV Upper - Recent sediments; alluvial and colluvial deposits: gravels, sand, silt and clay
Jurassic	J11 Mogod suite: volcanic rocks and dykes: microdiorite, andesite, porphyry, liparite, dacite and tuffaceous conglomerate.
Triassic to Jurassic	J11-12 Mogod suite: volcanic rock and dyke of liparite, dacite, andesite and their tuff.
Permian	P1a1 Lower Hanuigol Formation: volcanic rock and dyke of basalt, andesite, dacite and liparite.
Plutonic Rocks	
Triassic	T11 Selenge Complex: Lower Triassic: fine grained granodiorite porphyry.
Permian to Triassic	T11-12 Selenge Complex: granite.
	T11-13 Selenge Complex: granite.
	T11-14 Selenge Complex: granodiorite.
	T11-15 Selenge Complex: diorite.
Structure	
	Fault
Alteration	
	Alteration Zone: silicification, sericitization, chloritization
Mineralization	
	Mineral showing
	Section line

LEGEND

Sedimentary Rocks	
Quaternary	QIII-IV Alluvial and colluvial deposits: gravels, sand, silt and clay
Triassic to Jurassic	J11-12 Mogod suite: volcanic rocks and dykes: microdiorite, andesite, porphyry, liparite, dacite and tuffaceous conglomerate.
	P1a1 Lower Hanuigol Formation: volcanic rock and dyke of basalt, andesite, dacite and liparite.
Plutonic Rocks	
Jurassic	J11 Mogod suite: volcanic rocks and dykes: microdiorite, andesite, porphyry, liparite, dacite.
Triassic	T11 Selenge Complex: Lower Triassic: fine grained granodiorite porphyry.
Permian to Triassic	T11-12 Selenge Complex: granite.
	T11-13 Selenge Complex: granite.
	T11-14 Selenge Complex: granodiorite.
	T11-15 Selenge Complex: diorite.
Structure	
	Fault
Alteration	
	Alteration Zone: silicification, sericitization, chloritization
Mineralization	
	Mineral showing
Geophysical anomaly	
	IP chargeability anomaly
	Section line

Geological Map in the Zuukhin gol area (1:50,000)

Geological Map in the Zuukhin gol area (1:25,000)