

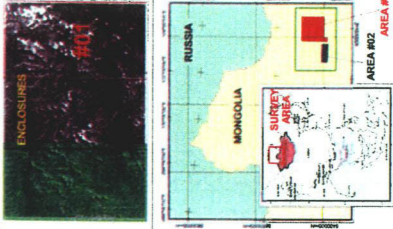
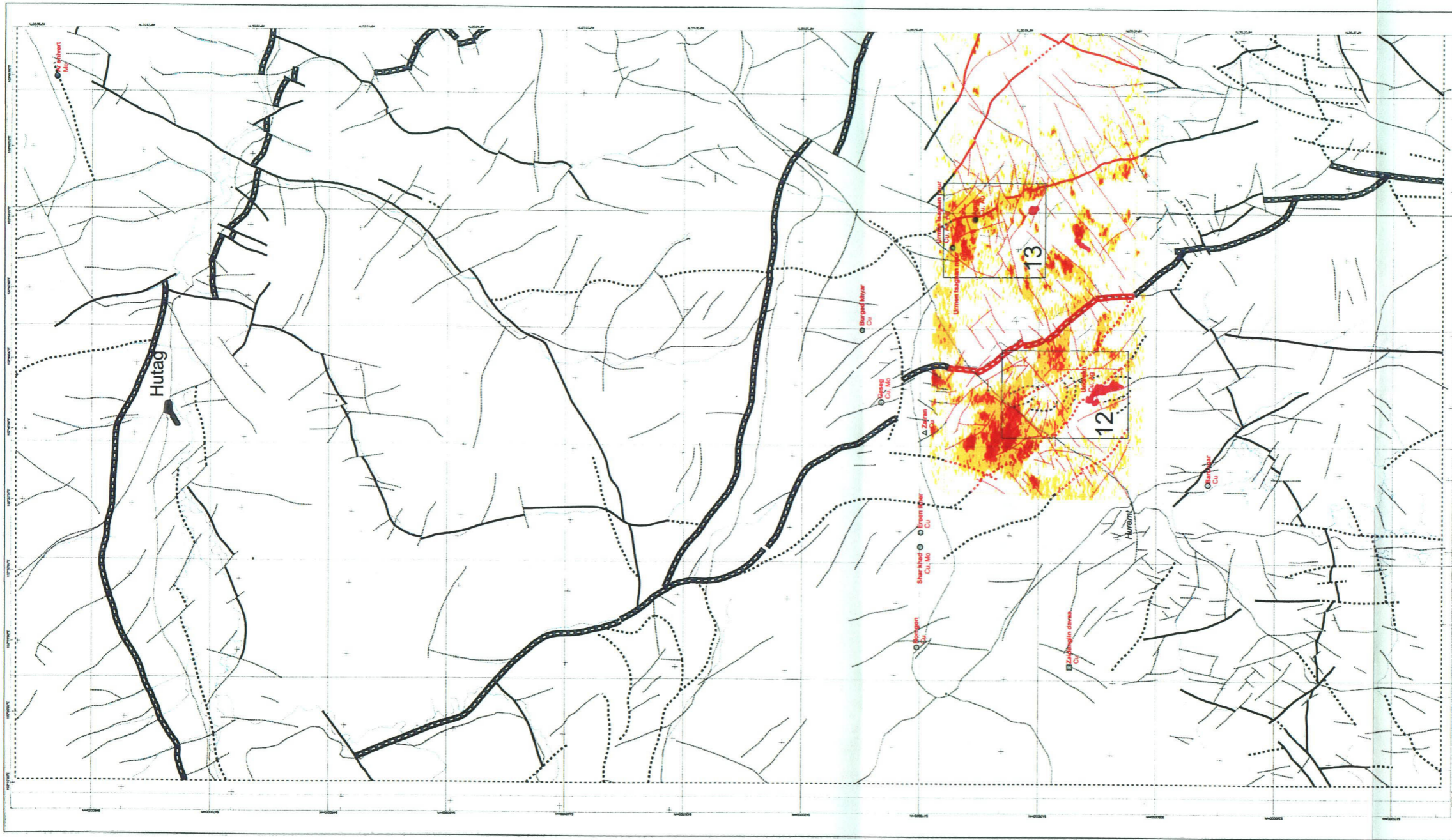
CULTURAL FEATURES
 Symbols for cultural features are shown in the legend. These include symbols for walls, gates, and other structures. The legend also includes symbols for roads, rivers, and other geographical features.

EXPLANATION OF INTERPRETATION SYMBOLS
 This section provides a detailed key for the symbols used on the map. It includes symbols for various geological features such as faults, faults with slickensides, faults with slickensides and slickenside striations, and faults with slickensides and slickenside striations. It also includes symbols for faults with slickensides and slickenside striations, and faults with slickensides and slickenside striations.

ENCLOSURES
 This section lists the various enclosures and areas included in the map. It includes symbols for various types of enclosures, such as walls, gates, and other structures. The legend also includes symbols for roads, rivers, and other geographical features.

WESTERN ERDENET AREA MONGOLIA
 REGIONAL STRUCTURAL INTERPRETATION FROM AIRBORNE MAGNETIC AND REMOTE SENSING IMAGERY
 JAPAN INTERNATIONAL CO-OPERATION AGENCY,
 METAL MINING AGENCY OF JAPAN,
 MITSUBISHI MATERIAL NATURAL RESOURCES DEVELOPMENT CORPORATION

Produced by: Dr. Shigeru O. Sato
 Project Director: Yoshihiro O. Sato
 Date: 1995
 Map Scale: 1:100,000
 Project Number: 83
 Map Number: 11
 Sheet Number: 11
 Project Name: Western Erdenet Area
 Project Location: Western Mongolia, Zone 48



EXPLANATION OF INTERPRETATION SYMBOLS

SURVEY ENCLOSURES

- 1 Regional boundary from remote sensing data
- 2 Area of mineral occurrence
- 3 Area of mineral occurrence boundary and/or approved structure. Nature possibly resulting from interpretation and discussed in the accompanying report.

ARBOREAL GEOLOGICAL SYMBOLS

From 1:50,000 scale geological map

CULTURAL FEATURES

From 1:50,000 scale geological map

MINERALIZATION

From 1:50,000 scale geological map

RELIEF (ELEVATION) SYMBOLS

From 1:50,000 scale geological map

WESTERN ERDENET AREA MONGOLIA

REGIONAL STRUCTURAL INTERPRETATION
FROM AERIAL PHOTOGRAPHIC DATA
AND REMOTE SENSING IMAGERY

METAL MINING AGENCY OF JAPAN,
MITSUBISHI MATERIAL NATURAL RESOURCES
DEVELOPMENT CORPORATION

JAPAN INTERNATIONAL CO-OPERATION AGENCY,
METAL MINING AGENCY OF JAPAN,
MITSUBISHI MATERIAL NATURAL RESOURCES
DEVELOPMENT CORPORATION

Approximate Scale 1:100,000

Produced by: Dr. Steven G. Bely
 Digitizing: February 2002
 Date: February 2002
 Map Number: Western Erdenet Area
 Map Details: Mitsubishi Material Natural Resources Development Corporation

Japan International Cooperation Agency, Inc.
 4-1-8, Hongo 2-chome, Bunkyo-ku, Tokyo 113, Japan
 Tel: (81) 3-5371-3100
 Fax: (81) 3-5371-3166