

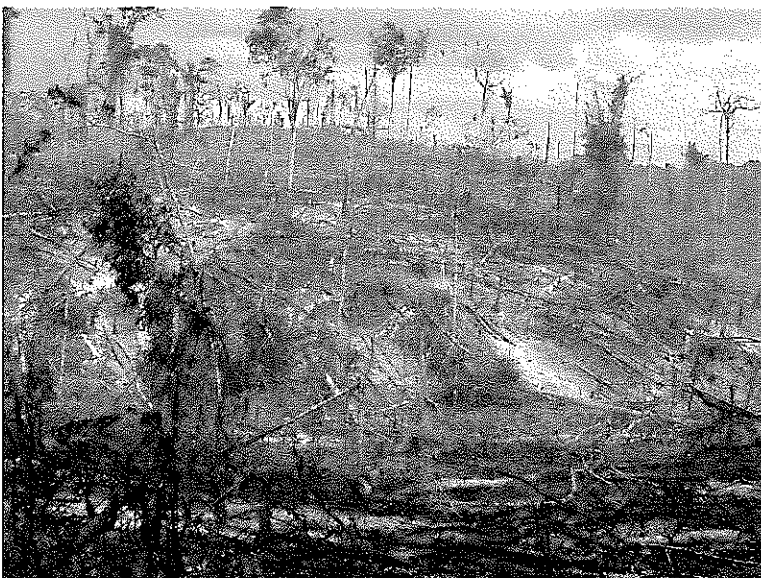
**THE MASTER PLAN STUDY ON
DEGRADED LAND RESTORATION IN THE STATE OF PARÁ 1**



1. Deforestation activities are still carried out in the study area.



2. The small farmers are practicing shifting agriculture that uses fire.



3. During the dry season, the forests are burned after deforestation for cattle breeding and agriculture activities.

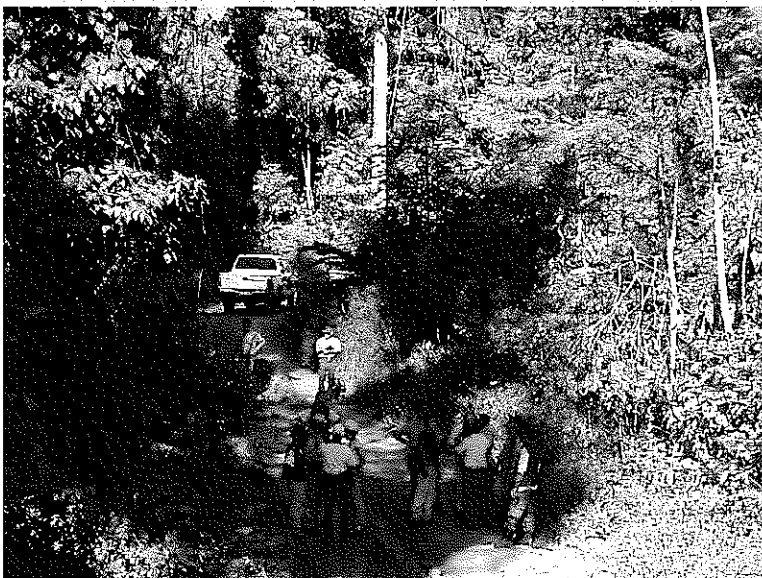
**THE MASTER PLAN STUDY ON
DEGRADED LAND RESTORATION IN THE STATE OF PARÁ 2**



4. It is difficult to control babaçú growth, which is concentrated in the degraded areas of the eastern part of the Study Area.



5. The settlement projects are one of the factors for degradation.



6. The remaining natural forests were also included in the Study.

**THE MASTER PLAN STUDY ON
DEGRADED LAND RESTORATION IN THE STATE OF PARÁ 3**



7. The farmer's survey was carried out from the socio-economical viewpoint.



8. Advanced farms are practicing the agroforestry activity with pepper and paricá.

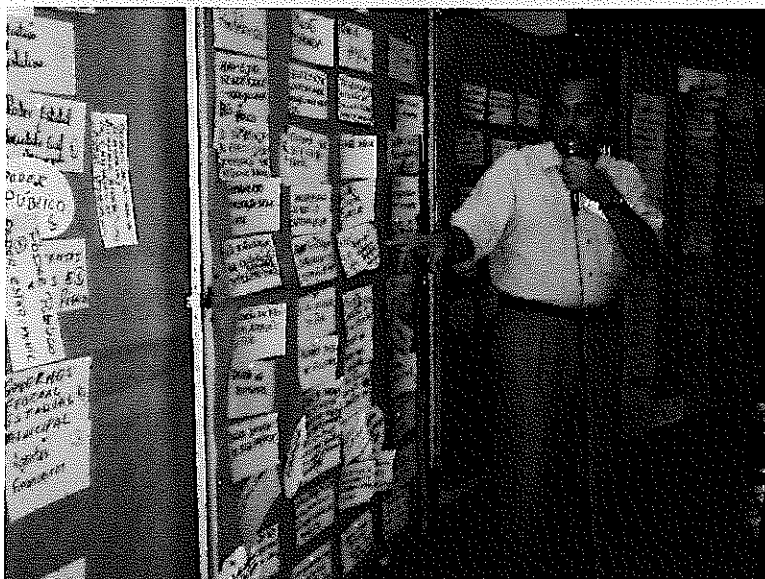


9. The forestation with teak for high profit is carried out by a part of the farmers.

**THE MASTER PLAN STUDY ON
DEGRADED LAND RESTORATION IN THE STATE OF PARÁ 4**



10. Minutes of meeting signed with the secretary of SECTAM.



11. Workshop was carried out as a part of the technical transfer seminar in Maraba.



12. Technical transfer seminar was carried out for 4 times including the seminars carried out in Belem.