

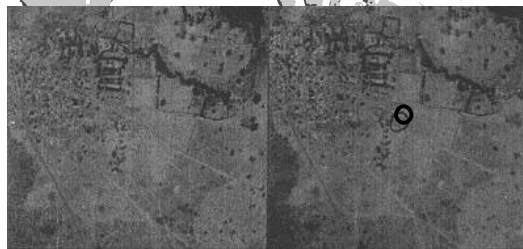
# Pricking of control points



1. Identification of control points

2. Pricking

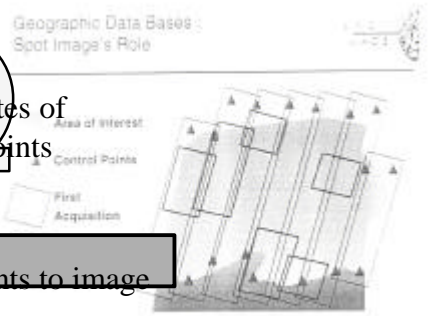
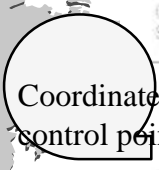
3. Preparation of documents



Stereo pair of aerial photos



# Spatial triangulation

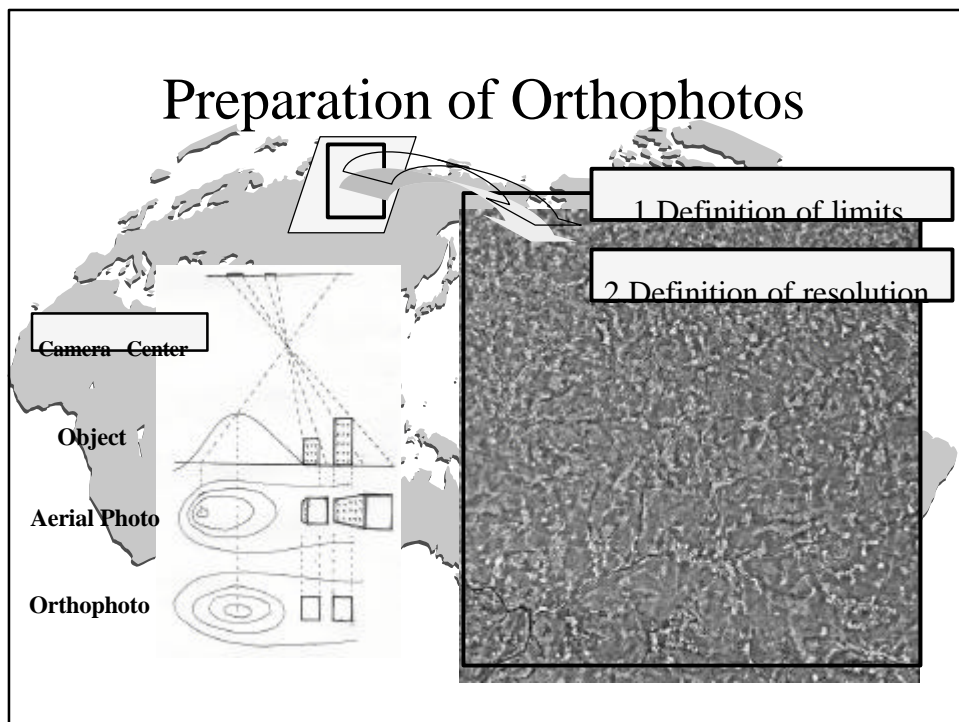
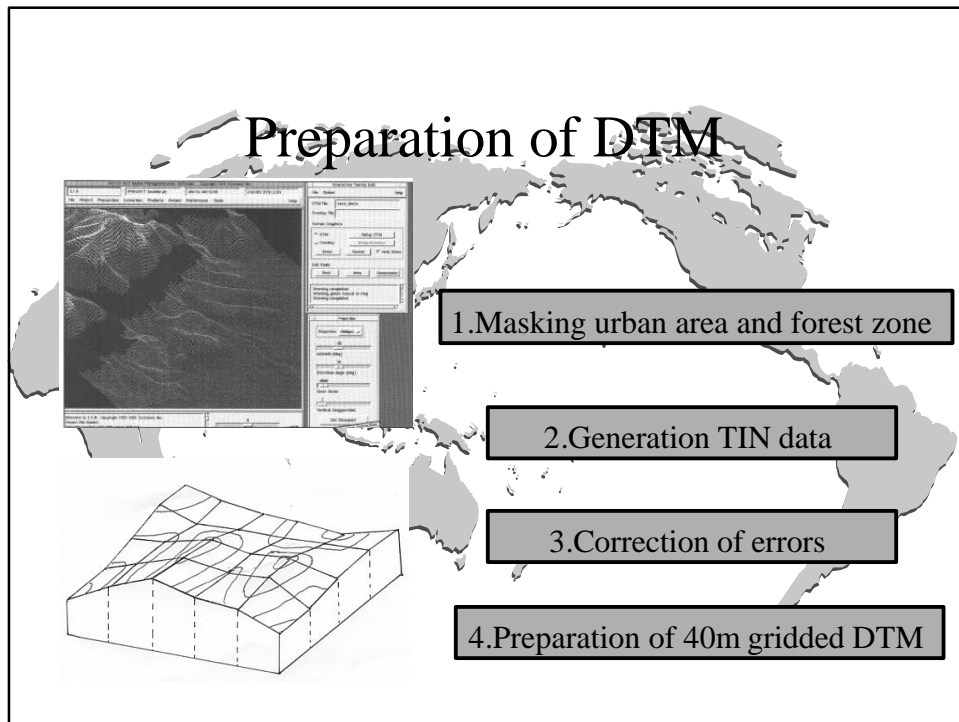


1. Transfer of position of control points to image

2. Selection of pass-points and tie-points and observation coordinates on image.

3. Block adjustment

*Control points are constructed on the periphery of study area.*



## The Digital Compilation system

The digital compilation system were introduced for data acquisition and data compilation in this Study.



## Preparation of Base maps for digitizing

Base maps for digitizing were prepared based on field identified photos and orthophotos.

