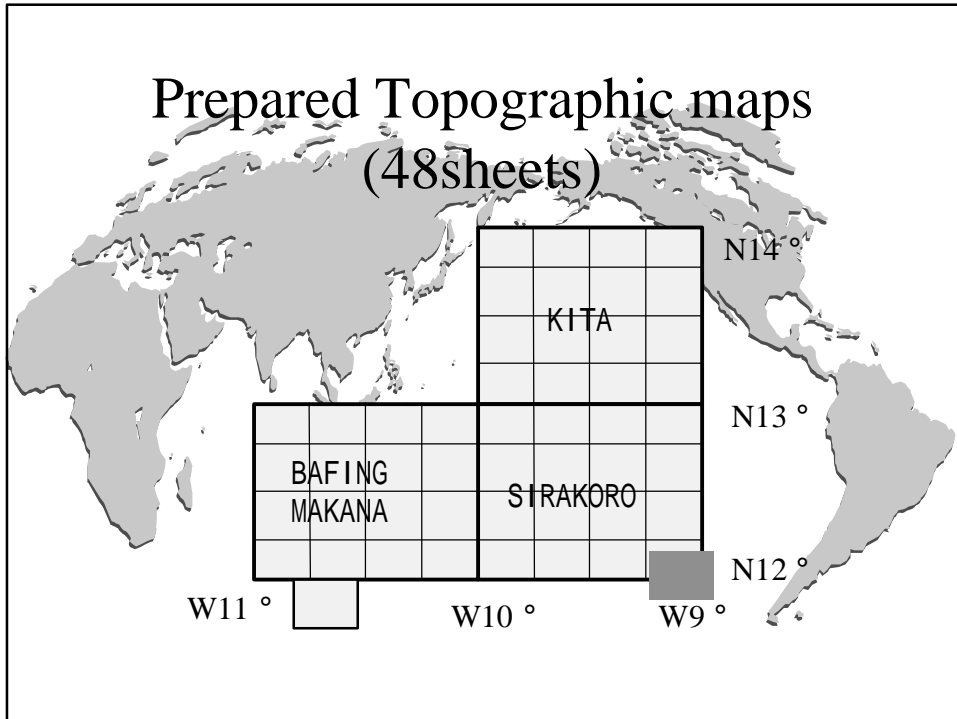
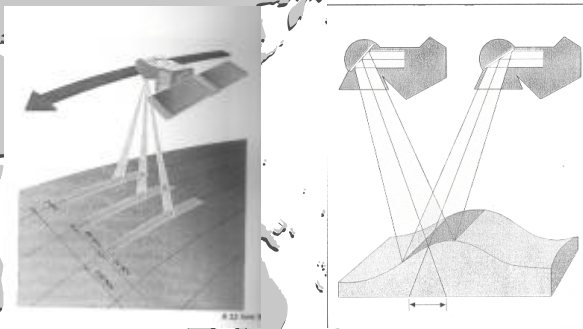


Prepared Topographic maps (48 sheets)



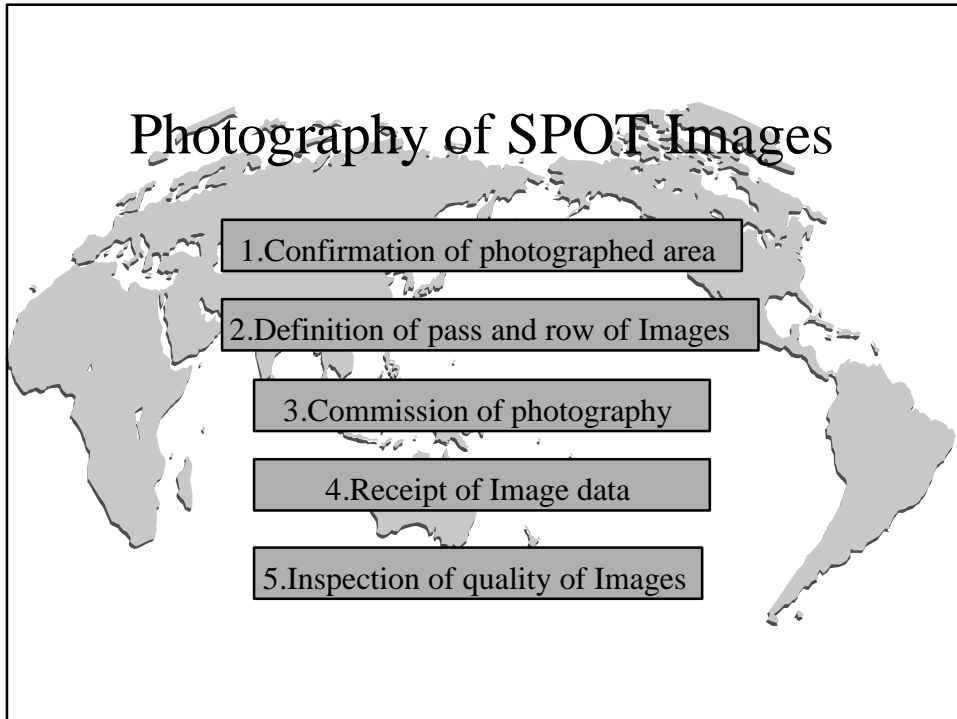
SPOT-Satellite

SPOT satellite images were used to acquire geographic feature data.

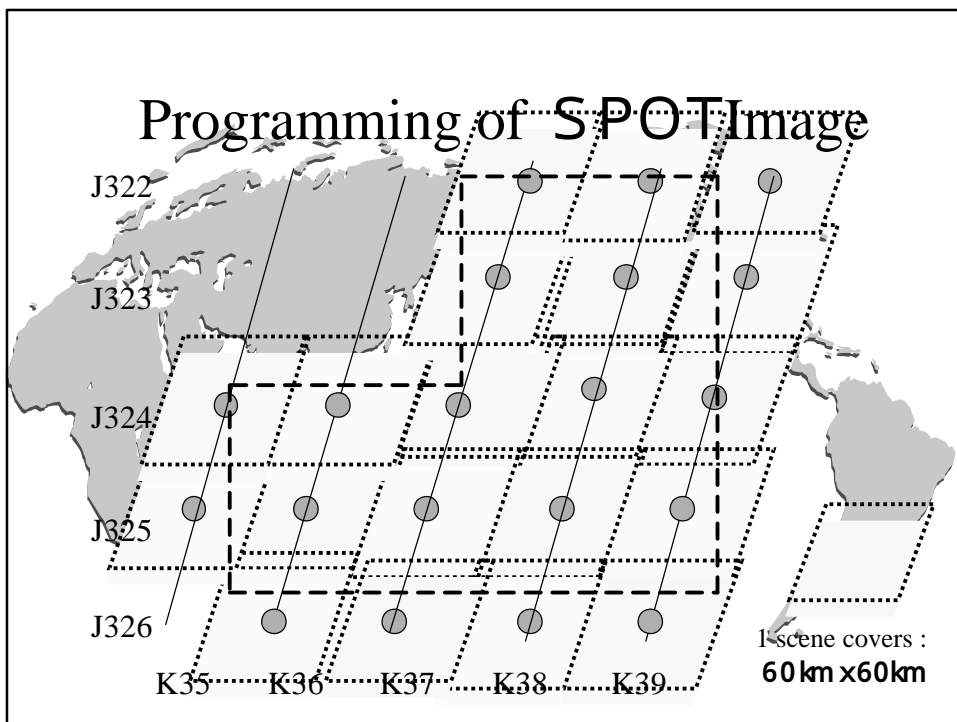


Area covered by 1 scene	60km x 60km
Resolution	10m
Sensor	Panchromatics
Photo scale of contact print	1/400,000

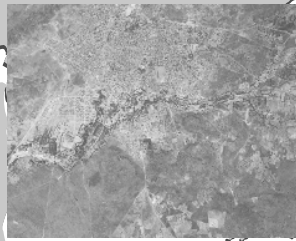
Photography of SPOT Images



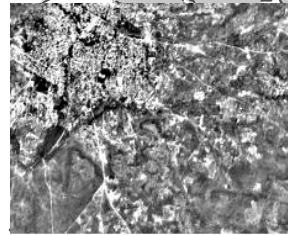
Programming of SPOT Image



Aerial photo and SPOT Image



Aerial photo



SPOT Image



1/200,000 Topographic map

Aerial photography

Aerial photos were used to understand the details of geographic features.

1. Confirmation of Photographed area

2. Plan of photography

3. Photography

4. Preparation of contact prints

5. Inspection for Quality

6. Preparation of Index map

7. Preparation of 2-time enlarged photos

Aerial photography



Item	Aerial photography
Type of Camera	Zeiss RMK TOP15
Size of film	230mm x 230mm
Focus distance	154.401mm
Height of photography	7700m above ground
Photo scale	1/50,000
Over lap	60%
Side lap	30%

Production of aerial photos



Products

- Contact Prints 2sets
- 2 times enlarged Photos

Photo Interpretation



1. Confirmation of the study area

2. Preparation of Interpretation key



3. Execution photo interpretation

4. Preparation for field Identification