

Appendices

Appendix 1-1 Member List of the Study Team (Basic Design Study)

Basic Design Study on the Project for Siem Reap
Generating Facilities

1.	Leader	Katsutoshi KOMORI	Third Project Management Division Grant Aid Management Department, JICA
2.	Chief Consultant /Power Supply Planner	Yoshikazu SUNAGAWA	Nippon Koei Co., Ltd
3.	Generating Facility Planner	Hiroshi KAWAKAMI	Nippon Koei Co., Ltd
4.	Power Distribution and Transmission Planner	Sumio TSUKAHARA	Nippon Koei Co., Ltd
5.	Operation and Management Planner/Power Demand Forecast	Takuji YAMAMOTO	Nippon Koei Co., Ltd
6.	Cost Estimator /Procurement Planner	Hitoshi EGAWA	Nippon Koei Co., Ltd

Appendix 1-2 Member List of the Study Team (Explanation on Draft Report)

Basic Design Study on the Project for Siem Reap
Generating Facilities

1.	Leader	Yasuhiko WADA	Planning Division, Grant Aid Management Department, JICA
2.	Chief Consultant /Power Supply Planner	Yoshikazu SUNAGAWA	Nippon Koei Co., Ltd
3.	Generating Facility Planner	Hiroshi KAWAKAMI	Nippon Koei Co., Ltd
4.	Power Distribution and Transmission Planner	Sumio TSUKAHARA	Nippon Koei Co., Ltd

Appendix 2-1 Study Schedule (Basic Design Study)

No.	Date	Day	Place of stay	JICA Team Leader	Consultants				
				Mr. Komori	Mr. Sunagawa	Mr. Kawakami	Mr. Tsukahara	Mr. Yamamoto	Mr. Egawa
1	5/14	Mon	Bangkok	Narita (NH915/10:00) Bangkok (14:25)	Narita (TG641/11:00) Bangkok (15:30)				
2	5/15	Tue	Phnom Penh	Bangkok (TG696/8:35) Phnom Penh (9:50), Courtesy call to JICA Cambodia Office and Embassy of Japan					
3	5/16	Wed	Phnom Penh	Courtesy call to Ministry of Industry, Mines and Energy (MIME)					
				Discussion with Electricite du Cambodge (EDC), Survey of Exsiting Power Station in Phnom Penh					
4	5/17	Thu	Siem Reap	Discussion with EDC Siem Reap, Survey of Exsiting Generators					
5	5/18	Fri	Siem Reap	Courtesy call to Siem Reap Governor, Discussion with EDC Siem Reap, Site Survey of New Power Plant					
6	5/19	Sat	Siem Reap	Site Survey and measuring of New Power Plant and Existing Distribution Lines					
7	5/20	Sun	Siem Reap	Documents arrangemant					
8	5/21	Mon	Siem Reap	Discussion with Project Office for National Road No.6, Discussion with EDC Siem Reap					
9	5/22	Tue	Phnom Penh	Discussion with EDC					
10	5/23	Wed	Phnom Penh	Discussion with EDC and preparation of minutes					
11	5/24	Thu	Phnom Penh	Signing of minutes					
12	5/25	Fri	Phnom Penh	Report to JICA Cambogia Office and Embassy of Japan					
13	5/26	Sat	Phnom Penh	Phnom Penh (TG697/10:50) Bangkok (11:55)、 Bangkok(NH916/22:15) Narita (06:10、 5/27)	Data analyzing, Documents Arrangement, Considering the way of Procurement and Transportation Plans of materials				
14	5/27	Sun	Phnom Penh		Data analyzing, Documents Arrangement, Considering the way of Procurement and Transportation Plans of materials				
15	5/28	Mon	Siem Reap		Discussion with EDC Siem Reap			Measuring of New Location	Measuring of New Location & Data Collection
16	5/29	Tue	Siem Reap		Development Planing in Siem Reap Province	Survey of Generators	Development Planing in Siem Reap Province	Measuring of New Location	Measuring of New Location & Data Collection
17	5/30	Wed	Siem Reap		Discussion with APSARA Survey of Substation Facilities	Survey of Generators	Discussion with APSARA	Survey of Electrical Facilities	Data Collection & Survey of Substation Facilities
18	5/31	Thu	Siem Reap		Survey of Existing Power Station and Substations	Survey of Generators	Survey of Existing Power Station Facilities	Survey of Substation Facilities	Data Collection & Survey of Substation Facilities
19	6/1	Fri	Siem Reap		Soil Survey of New Power Plant				
20	6/2	Sat	Siem Reap		Documents Arrangement & Survey of New Power Plant				
21	6/3	Sun	Siem Reap		Documents Arrangement & Considering Implementation Plan				
22	6/4	Mon	Siem Reap		Discussion with EDC & Report to JICA	Discussion with EDC & Report to JICA	Discussion with EDC & Report to JICA	Data Collection & Report to JICA	Data Collection & Report to JICA
23	6/5	Tue	Phnom Penh		Discussion with EDC & Making Reports	Survey of Fuel Oil	Survey of Finances	Phnom Penh (TG699/18:50) Bangkok (19:55), Bangkok (TG642/23:10) Narita (7:30、 6/7)	
24	6/6	Wed	Phnom Penh		"	"	"		
25	6/7	Thu	Phnom Penh		"	Survey of Training Center	Survey of Training Center		
26	6/8	Fri	Phnom Penh		"	Preparation of Reports	Preparation of Reports		

Appendix2-1 Study Schedule

No.	Date	Day	Place of stay	JICA Team Leader	Consultants				
				Mr. Komori	Mr. Sunagawa	Mr. Kawakami	Mr. Tsukahara	Mr. Yamamoto	Mr. Egawa
27	6/9	Sat	Phnom Penh / Siem Reap		Phnom Penh (FT996/8:40) Siem Reap(9:20) Soil Survey	Documents Arrangement	Documents Arrangement		
28	6/10	Sun	Phnom Penh / Siem Reap		Soil Survey	〃	〃		
29	6/11	Mon	Phnom Penh		Soil Survey Siem Reap (FT997/7:20) Phnom Penh (8:10)	Making Reports	Making Reports		
30	6/12	Tue	Phnom Penh		Making Reports	〃	〃		
31	6/13	Wed	Phnom Penh		〃	〃	〃		
32	6/14	Thu	Phnom Penh		〃	〃	〃		
33	6/15	Fri	Phnom Penh		Report to JICA Cambogia Office and Embassy of Japan				
34	6/16	Sat	Bangkok		Phnom Penh (TG699/18:50) Bangkok (19:55)				
35	6/17	Sun			Bangkok (TG772/07:35) Narita (15:45)				

Appendix 2-2 Study Schedule (Explanation on Draft Report)

No.	Date	Day	Place of stay	JICA Team Leader	Consultants			
				Mr. Wada	Mr. Sunagawa	Mr. Kawakami	Mr. Tsukahara	
1	8/22	Wed	Bangkok		Narita(TG641/11:00) - Bangkok(15:30)			
2	8/23	Thu	Phnom Penh	Bangkok(TG698/16:30) - Phnom Penh (17:45)	Bangkok (TG696/08:35) - Phnom Penh (09:50)			
3	8/24	Fri	Phnom Penh	Courtesy call to JICA Cambodia Office Courtesy call to Electricite du Cambodge (EDC) Courtesy call to Ministry of Industry, Mines and Energy (MIME) Courtesy call to Embassy of Japan				
4	8/25	Sat	Siem Reap	Phnom Penh (FT996/08:40) - Siem Reap(09:20) Site Survey				
5	8/26	Sun	Siem Reap	Document Arrangement				
6	8/27	Mon	Siem Reap	Courtesy call to Siem Reap Governor Discussion with EDC Siem Reap				
7	8/28	Tue	Phnom Penh	Siem Reap (FT997/07:20) - Phnom Penh (08:00) Discussion with EDC				
8	8/29	Wed	Phnom Penh	Discussion with EDC				
9	8/30	Thu	Phnom Penh	Signing of M/D				
10	8/31	Fri	Phnom Penh	Report to Embassy of Japan Report to JICA Cambodia Office Report to CDC				
11	9/1	Sat	Bangkok	Phnom Penh (TG697/10:50) - Bangkok(11:55) Bangkok(NH916/22:15) -				
13	9/2	Sun		Narita(06:10)	Bangkok (TG640/10:50) - Narita(19:00)			

Appendix 3 List of Parties Concerned in the Recipient CountryBasic Design Study on the Project for Siem Reap
Generating Facilities

No.	Org.	Name	Position
MINISTRY OF INDUSTRY, MINES AND ENERGY			
1		ITH PRAING	Secretary of State
2		KHLAUT RANDY	Under Secretary of State of M.I.M.E
3		TUN LEAN	Director
ELECTRICITY AUTHORITY OF CAMBODIA			
4		TY NORIN	Chairman
ELECTRICITE DU CAMBODGE			
5		TAN KIM VINN	General Director
6		YIM NOLSON, P.E.	Deputy Managing Director Planning & Technique
7		SAN VIRYAN	Deputy Manager of Technics Office
8		HEU VANTHAN	Deputy Manager, Executive Director of Finance & Accounting
9		OUM THY	Power Plant Engineer Chief Division Project Manegement Office No.1Corporate Planning & Project Dept.
10		CHAN SODAVATH	Acting Executive Director Corporate Planning & Projects
11		CHHUNG UNG	Deputy Director of Commercial Department
12		ROS CHADA	Deputy Executing Director of Generation Department
13		LUEUNG KEOSELA	Corporate Planning and Projects Department Independent Power Producer Office
14		S.KBANSAL	Advisor
Council for the Development of Cambodia Rehabilitation and Development Board			
15		HENG SOKUN	Director Bilateral Aid Coordination Dept. Japan - Asia Pacific - America
EDC SIEM REAP			
16		OUK CHAMROEUN	Director
17		CHEAM KOSEN	Deputy Director of Administration & Accounting
18		KONG CHHON KHEMARIN	Deputy Director of technics
19		NONG SARAM	Chief of administration Section
20		SENG VIBOL	Chief of Distribution Section
21		MEY SEREBIBOTH	Assistance to Chief of Distribution Section
22		PRUM SOKUNNA	Deputy Director
23		LOU SATYA	Technical Staff
24		PHON PHEACHANY	Ditto
25		HIENG BORA	Ditto

Appendix3 List of Parties Concerned in Recipient Country

No.	Org.	Name	Position
Siem Reap Province			
26		EHAP NHATYVOUD	Governor
27		SUYSAN	2nd Deputy Governor
EdC Trainning Center			
28		CHAN KHEANG	Director
CAMBODIAN MINE ACTION CENTER			
29		KHEM SOPHOAN	Director General
30		MEN SARUN	Co-director
31		JEAN PIERRE BILLAULT	Consul honoraire de France
Apsara Authority			
32		DENG SAMBATH	Assistant Deputy Director of Apsara Authority

ATTACHMENT

1. Objective of the Project

The objective of the Project is to improve the standard of living of inhabitants in the Project site by installing new generating facilities.

2. Project site

The site of the Project is shown in Annex-1.

3. Responsible and Implementing Agency

The responsible agency is the Ministry of Industry, Mines and Energy. The Implementing agency is the Electricite du Cambodge (EDC). The organization charts of EDC, whole organization and Siem Reap, are shown in Annexes 2-1 and 2-2.

4. Items requested by the Government of Cambodia

After discussions with the Team, the following components were finally requested by the Cambodian side;

- 1) Construction of a 10MW new power plant in Siem Reap,
- 2) Expansion of 22kV line to connect the new power plant with the existing system (if necessary),
- 3) Consultant's services including the training of maintenance staff of the power plant in Siem Reap.

JICA will assess the appropriateness of the request and will recommend to the Government of Japan for approval.

5. Japan's Grant Aid Scheme

- 5-1. The Cambodian side understood the Japan's Grant Aid scheme explained by the Team, as described in Annex-3.
- 5-2. The Cambodian side will take the necessary measures, as described in Annex-4, for smooth implementation of the Project, as a condition for the Japanese Grant Aid to be implemented.

6. Schedule of the Study

- 6-1. The consultant will proceed to further studies in Cambodia until June 16, 2001.
- 6-2. JICA will prepare the draft report in English and dispatch a mission in order to explain its

Handwritten signature
K.R.

contents around August.

- 6-3. In case that the contents of the report is accepted in principle by the Government of Cambodia, JICA will complete the final report and send it to the Government of Cambodia by November, 2001.

7. Other relevant issues

- 7-1. The Cambodian side will provide necessary data and information for the study.
- 7-2. The Cambodian side will secure personnel and budget necessary for the Project.
- 7-3. The Cambodian side will take all possible measures to secure safety of the concerned people during the study and implementation of the Project on condition that the Grant Aid by the Government of Japan is extended to the Project.
- 7-4. The Cambodian side requested to build a new power plant in the suburb of the Siem Reap City based on the future plan. The Team will review the location of the new power plant in Japan from the point of view of economy, technology, future expansion plan of the power system, and environmental protection, and inform the Cambodian side the result with the mission dispatched around August. In case that the new power plant is constructed in the land different from the place where the existing power plant is built, the Cambodian side will complete necessary measures described as follows prior to the implementation of the Project;
- (1) To take necessary procedures for land acquisition and compensation, including to obtain necessary approval from related agencies,
 - (2) To construct approach road.
- 7-5. The Cambodian side will remove all UXOs and mines in accordance with the results of the UXO and mine search. The search and removal work by the Cambodian side will be completed prior to the commencement of the detailed design and construction of the new power plant, respectively. While executing the Basic Design Study, the Cambodian side will also secure safety survey condition regarding all UXOs and mines.
- 7-6. The Cambodian side requested to build the distribution line via the entrance of Angkor Wat to the Siem Reap Airport. The Team explained that the distribution line would not be included in the components of this Project because the population in the area along the distribution line is not much and the benefit to cost is estimated low.
- 7-7. The training of the maintenance staff of Electricity Siemreap Unit is indispensable to ensure smooth operation of the new power plant provided under the Project. EDC Headquarter will keep close cooperation with Electricity Siemreap Unit and take necessary measures for the staff training on condition that the Grant Aid by the Government of Japan is extended to the

12.21.

contents around August.

- 6-3. In case that the contents of the report is accepted in principle by the Government of Cambodia, JICA will complete the final report and send it to the Government of Cambodia by November, 2001.

7. Other relevant issues

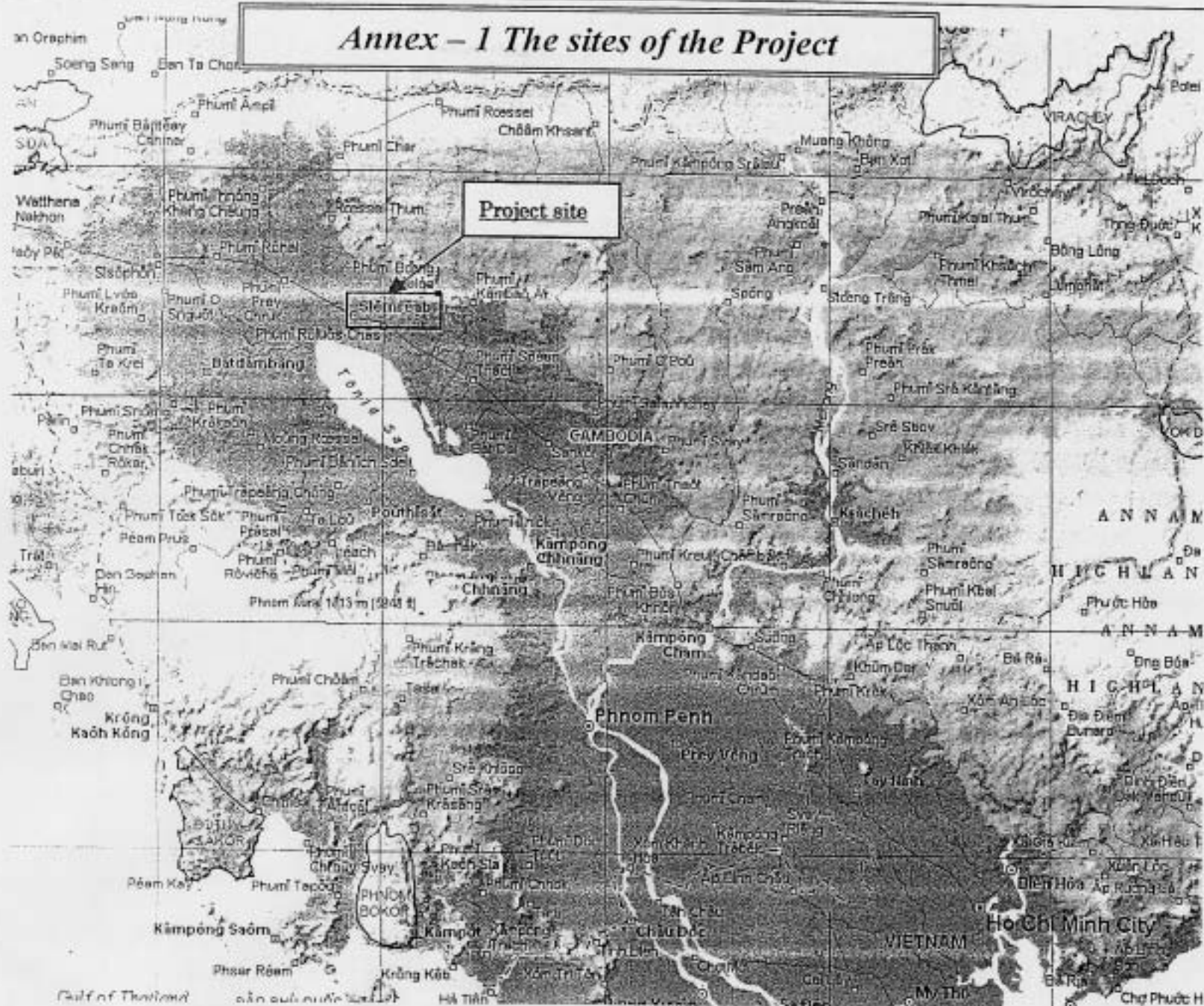
- 7-1. The Cambodian side will provide necessary data and information for the study.
- 7-2. The Cambodian side will secure personnel and budget necessary for the Project.
- 7-3. The Cambodian side will take all possible measures to secure safety of the concerned people during the study and implementation of the Project on condition that the Grant Aid by the Government of Japan is extended to the Project.
- 7-4. The Cambodian side requested to build a new power plant in the suburb of the Siem Reap City based on the future plan. The Team will review the location of the new power plant in Japan from the point of view of economy, technology, future expansion plan of the power system, and environmental protection, and inform the Cambodian side the result with the mission dispatched around August. In case that the new power plant is constructed in the land different from the place where the existing power plant is built, the Cambodian side will complete necessary measures described as follows prior to the implementation of the Project;
- (1) To take necessary procedures for land acquisition and compensation, including to obtain necessary approval from related agencies,
 - (2) To construct approach road.
- 7-5. The Cambodian side will remove all UXOs and mines in accordance with the results of the UXO and mine search. The search and removal work by the Cambodian side will be completed prior to the commencement of the detailed design and construction of the new power plant, respectively. While executing the Basic Design Study, the Cambodian side will also secure safety survey condition regarding all UXOs and mines.
- 7-6. The Cambodian side requested to build the distribution line via the entrance of Angkor Wat to the Siem Reap Airport. The Team explained that the distribution line would not be included in the components of this Project because the population in the area along the distribution line is not much and the benefit to cost is estimated low.
- 7-7. The training of the maintenance staff of Electricity Siemreap Unit is indispensable to ensure smooth operation of the new power plant provided under the Project. EDC Headquarter will keep close cooperation with Electricity Siemreap Unit and take necessary measures for the staff training on condition that the Grant Aid by the Government of Japan is extended to the

12.21.

Project. The Team will consider the plan of consulting services for training of maintenance staff of Electricity Siemreap Unit and will prepare the draft of the plan with the mission dispatched around August.

- 7-8. The Cambodian side requested to consider use of heavy oil, not light oil, as fuel of generating facilities because of economy. The team will review type of the fuel in Japan from the point of view of economy and maintenance, and inform the Cambodian side the result with the mission dispatched around August.
- 7-9. The both sides confirmed the Cambodian side's intention that even if the plan to purchase 115kV power from Thailand by construction of a transmission line is realized, the new power plant will remain as the main electricity resource to Siem Reap and the purchase from Thailand is a backup resource.

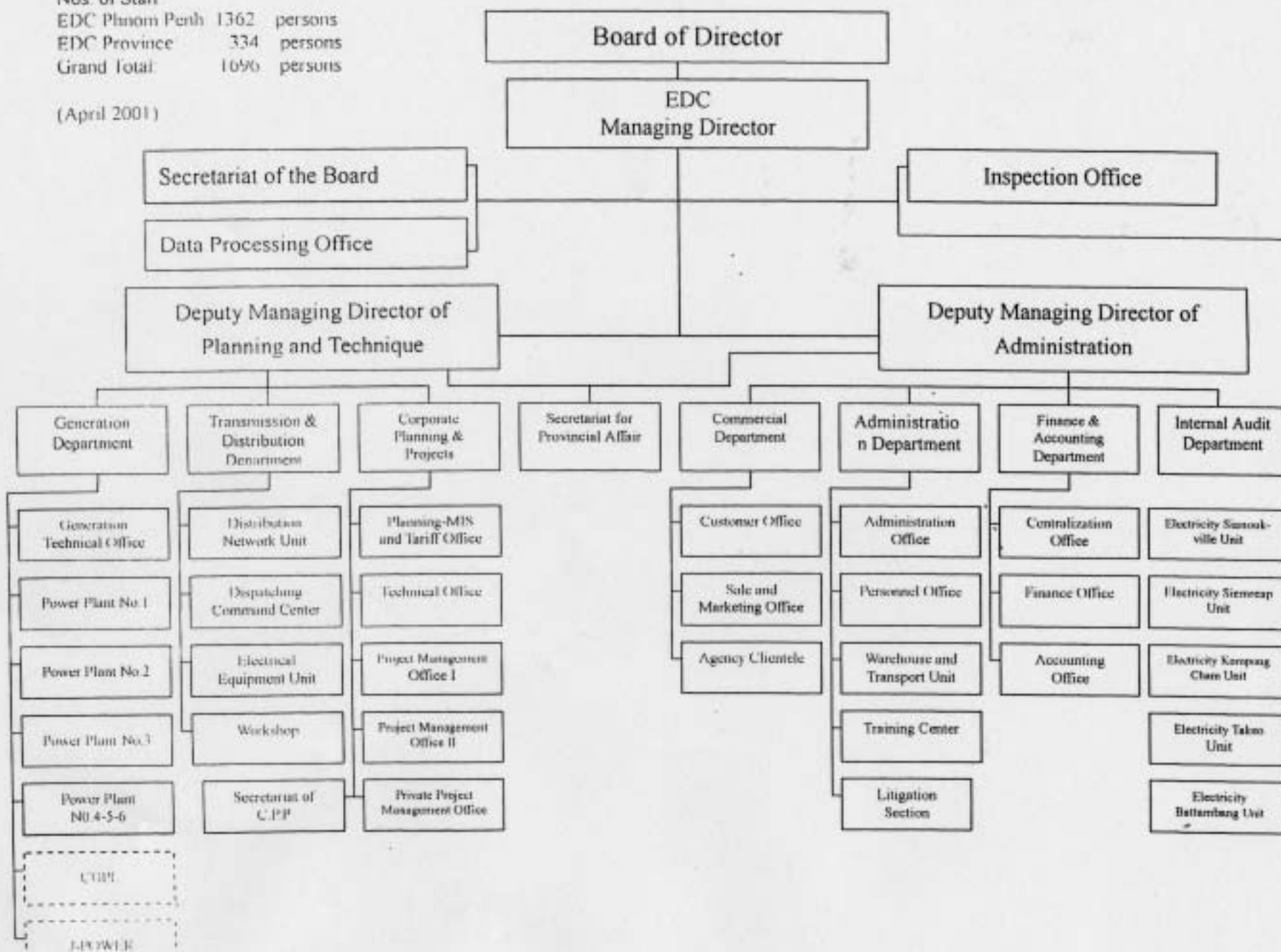
Annex - 1 The sites of the Project



Annex2-1: Organization Chart of Electricite du Cambodge

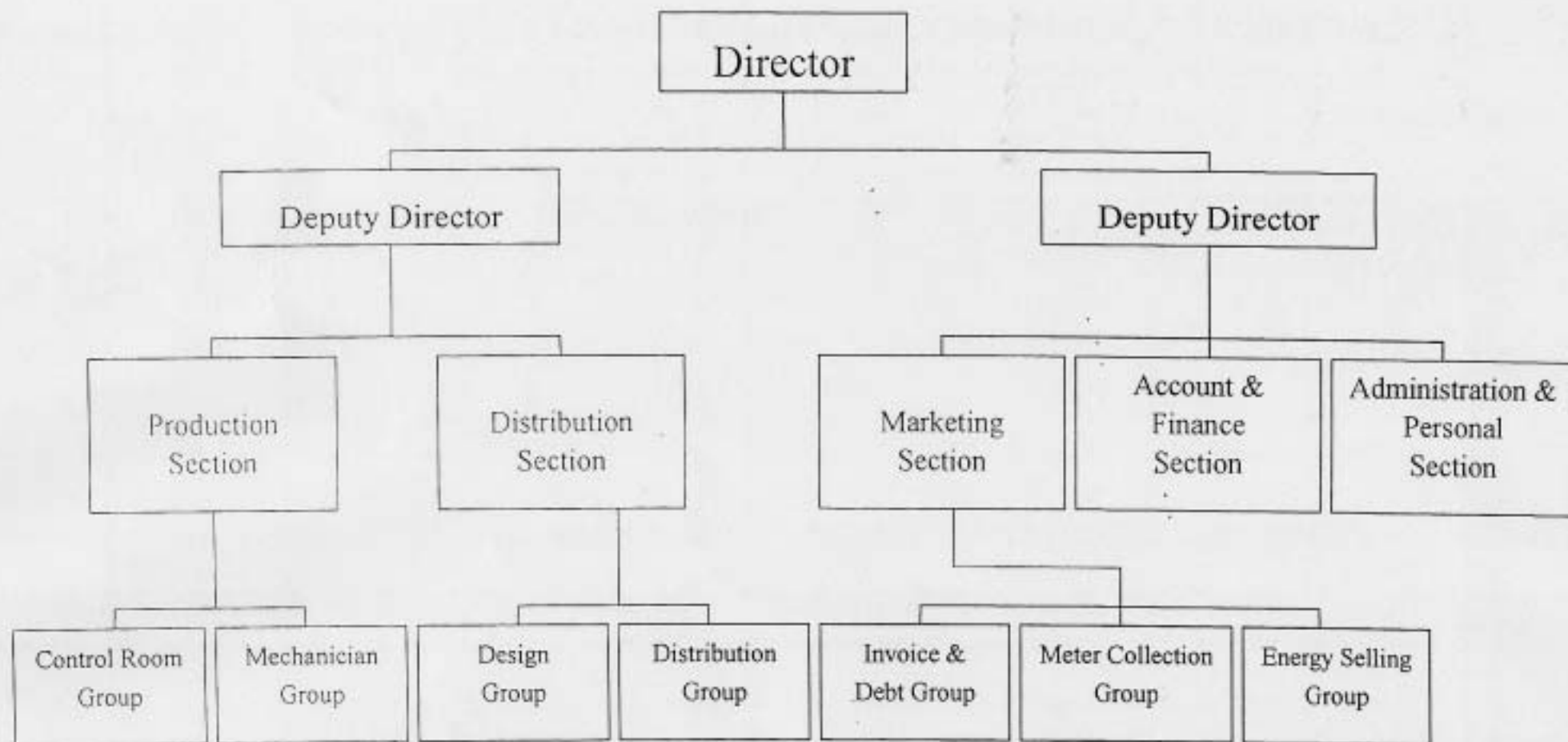
Nos. of Staff
 EDC Plnom Penh 1362 persons
 EDC Province 334 persons
 Grand Total: 1696 persons

(April 2001)



KK
12

Annex 2-2: Organization Chart of Electricity Siemreap Unit



Japan's Grant Aid

The Grant Aid scheme provides a recipient country with non-reimbursable funds to procure the facilities, equipment and services (engineering services and transportation of the products, etc.) for economic and social development of the country under principles in accordance with the relevant laws and regulations of Japan. The Grant Aid is not supplied through the donation of materials as such.

1. Grant Aid Procedures

Japan's Grant Aid Scheme is executed through the following procedures.

Application	(Request made by a recipient country)
Study	(Basic Design Study conducted by JICA)
Appraisal & Approval	(Appraisal by the Government of Japan and Approval by Cabinet)
Determination of Implementation	(The Notes exchanged between the Governments of Japan and the recipient country)

Firstly, the application or request for a Grant Aid project submitted by a recipient country is examined by the Government of Japan (the Ministry of Foreign Affairs) to determine whether or not it is eligible for the Grant Aid. If the request is deemed appropriate, the Government of Japan assigns JICA (Japan International Cooperation Agency) to conduct a study on the request.

Secondly, JICA conducts the study (Basic Design Study), using (a) Japanese consulting firm(s).

Thirdly, the Government of Japan appraises the project to see whether or not it is suitable for Japan's Grant Aid Scheme, based on the Basic Design Study report prepared by JICA, and the results are then submitted to the Cabinet for approval.

Fourthly, the project, once approved by the Cabinet, becomes official with the Exchange of Notes (E/N) signed by the Governments of Japan and the recipient country.

57
H. H.

Finally, for the smooth implementation of the project, JICA assists the recipient country in such matters as preparing tenders, contracts and so on.

2. Basic Design Study

1) Contents of the Study

The aim of the Basic Design Study (hereafter referred to as "the Study"), conducted by JICA on a requested project (hereafter referred to as "the Project") is to provide a basic document necessary for the appraisal of the Project by the Government of Japan. The contents of the Study are as follows:

- Confirmation of the background, objectives, and benefits of the requested Project and also institutional capacity of agencies concerned of the recipient country necessary for the Project's implementation.
- Evaluation of the appropriateness of the Project to be implemented under the Grant Aid Scheme from a technical, social and economic point of view.
- Confirmation of items agreed upon by both parties concerning the basic concept of the Project.
- Preparation of a Basic Design of the Project
- Estimation of cost of the Project

The contents of the original request are not necessarily approved in their initial form as the contents of the Grant Aid project. The Basic Design of the Project is confirmed considering the guidelines of Japan's Grant Aid Scheme.

The Government of Japan requests the Government of the recipient country to take whatever measures are necessary to ensure its self-reliance in the implementation of the Project. Such measures must be guaranteed even though they may fall outside of the jurisdiction of the organization in the recipient country actually implementing the Project. Therefore, the implementation of the Project is confirmed by all relevant organizations of the recipient country through the Minutes of Discussions.

28P
26.26

2) Selection of Consultants

For smooth implementation of the Study, JICA uses (a) registered consulting firm(s). JICA selects (a) firm(s) based on proposals submitted by interested firms. The firm(s) selected carry(ies) out a Basic Design Study and write(s) a report, based upon terms of reference set by JICA.

The consulting firm(s) used for the Study is(are) recommended by JICA to the recipient country to also work on the Project's implementation after the Exchange of Notes, in order to maintain technical consistency.

3. Japan's Grant Aid Scheme

1) Exchange of Notes (E/N)

Japan's Grant Aid is extended in accordance with the Notes exchanged by the two Governments concerned, in which the objectives of the Project, period of execution, conditions and amount of the Grant Aid, etc., are confirmed.

- 2) "The period of the Grant Aid" means the one fiscal year which the Cabinet approves the Project for. Within the fiscal year, all procedures such as exchanging of the Notes, concluding contracts with (a) consulting firm(s) and (a) contractor(s) and final payment to them must be completed.

However, in case of delays in delivery, installation or construction due to unforeseen factors such as natural disaster, the period of the Grant Aid can be further extended for a maximum of one fiscal year at most by mutual agreement between the two Governments.

- 3) Under the Grant Aid, in principle, Japanese products and services including transport or those of the recipient country are to be purchased.

When the two Governments deem it necessary, the Grant Aid may be used for the purchase of the products or services of a third country.

However, the prime contractors, namely, consulting constructing and procurement firms, are limited to "Japanese nationals". (The term "Japanese nationals" means persons of Japanese nationality or Japanese corporations controlled by persons of Japanese nationality.)

22
H.H.

4) Necessity of "Verification"

The Government of recipient country or its designated authority will conclude contracts denominated in Japanese yen with Japanese nationals. Those contracts shall be verified by the Government of Japan. This "Verification" is deemed necessary to secure accountability to Japanese taxpayers.

5) Undertakings required to the Government of the Recipient Country

In the implementation of the Grant Aid project, the recipient country is required to undertake such necessary measures as the following:

- ① To secure land necessary for the sites of the Project and to clear, level and reclaim the land prior to commencement of the construction,
- ② To provide facilities for the distribution of electricity, water supply and drainage and other incidental facilities in and around the sites,
- ③ To secure buildings prior to the procurement in case the installation of the equipment,
- ④ To ensure all the expenses and prompt execution for unloading, customs clearance at the port of disembarkation and internal transportation of the products purchased under the Grant Aid,
- ⑤ To exempt Japanese nationals from customs duties, internal taxes and other fiscal levies which will be imposed in the recipient country with respect to the supply of the products and services under the Verified Contracts,
- ⑥ To accord Japanese nationals, whose services may be required in connection with the supply of the products and services under the Verified contracts, such facilities as may be necessary for their entry into the recipient country and stay therein for the performance of their work.

6) "Proper Use"

The recipient country is required to operate and maintain the facilities constructed and equipment purchased under the Grant Aid properly and effectively and to assign staff necessary for this operation and maintenance as well as to bear all the expenses other than those covered by the Grant Aid.

7) "Re-export"

The products purchased under the Grant Aid should not be re-exported from the recipient country.

82
H.H.

8) Banking Arrangements (B/A)

a) The Government of the recipient country or its designated authority should open an account in the name of the Government of the recipient country in a bank in Japan (hereinafter referred to as "the Bank"). The Government of Japan will execute the Grant Aid by making payments in Japanese yen to cover the obligations incurred by the Government of the recipient country or its designated authority under the Verified Contracts.

b) The payments will be made when payment requests are presented by the Bank to the Government of Japan under an Authorization to Pay (A/P) issued by the Government of the recipient country or its designated authority.

9) Authorization to Pay (A/P)

The Government of the recipient country should bear an advising commission of an Authorization to Pay and payment commissions to the Bank.

21
X.X

Major Undertaking to be taken by Each Government

No	Items	To be covered by Grant Aid	To be covered by Recipient
1	To secure land	•	•
2	To clear, level and reclaim the site when needed		•
3	To construct gates and fences in and around the site		•
4	To construct the parking lot	•	
5	To construct roads		
	1) Within the site	•	
	2) Outside the site		•
6	To construct the buildings	•	
7	To provide facilities for the distribution of electricity, water supply, drainage and other incidental facilities		
	1) Electricity		
	a. The distributing line to the site		•
	b. The drop wiring and internal wiring within the site	•	
	c. The main circuit breaker and transformer	•	
	2) Water Supply		
	a. The city water distribution main to the site		•
	b. The supply system within the site (receiving and elevated tanks)	•	
	3) Drainage		
	a. The city drainage main (for storm, sewer and others) to the site		•
	b. The drainage system (for toilet sewer, ordinary waste, storm drainage and others) within the site	•	
	4) Gas Supply		
	a. The city gas main to the site		•
	b. The gas supply system within the site	•	
	5) Telephone System		
	a. The telephone trunk line to the main distribution frame/panel (MDF) of the building		•
	b. The MDF and the extension after the frame/panel	•	
	6) Furniture and Equipment		
	a. General furniture		•
	b. Project equipment	•	
8	To bear the following commissions to the Japanese foreign exchange bank for the banking services based upon the B/A		
	1) Advising commission of A/P		•
	2) Payment commission		•
9	To ensure unloading and customs clearance at port of disembarkation in recipient country		
	1) Marine (Air) transportation of the products from Japan to the recipient country	•	
	2) Tax exemption and custom clearance of the products at the port of disembarkation		•
	3) Internal transportation from the port of disembarkation to the project site	(•)	(•)
10	To accord Japanese nationals whose services may be required in connection with the supply of the products and the services under the verified contract such facilities as may be necessary for their entry into the recipient country and stay therein for the performance of their work.		•
11	To exempt Japanese nationals from customs duties, internal taxes and other fiscal levies which may be imposed in the recipient country with respect to the supply of the products and services under the verified contracts.		•
12	To maintain and use properly and effectively the facilities constructed and equipment provided under the Grant.		•
13	To bear all the expenses, other than those to be borne by the Grant, necessary for construction of the facilities as well as all for the transportation and installation of the equipment.		•

or
H. H.

ATTACHMENT

1. Components of the Draft Report

The Cambodian side agreed and accepted in principle the components of the draft report explained by the Team.

2. Japan's Grant Aid Scheme

The Cambodian side understands the Japan's Grant Aid scheme and the necessary measures to be taken by the Government of Cambodia as explained by the Team and described in Annex-3 and Annex-4 of the Minutes of Discussions signed by both parties on May 24, 2001.

3. Schedule of the Study

JICA will complete the Final Report in accordance with the confirmed items and send it to the Government of Cambodia in around November 2001.

4. Other Relevant Issues

4-1. Considering the objective of the Project, which is to improve the standard of living of inhabitants in the Project area by installing new generating facilities, the Cambodian side shall provide electricity to the residential area as the top priority.

4-2. In order to achieve the objective of the Project mentioned above, proper operation and maintenance of the new generating facilities are indispensable. Therefore, EDC Headquarters will keep close cooperation with Electricity Siemreap Unit and take necessary measures for the training of operation and maintenance staff of Electricity Siemreap Unit.

4-3. On condition that the Grant Aid by the Government of Japan is extended to the Project, the Cambodian side will take necessary measures:

- (1) to secure sufficient personnel and budget necessary for the Project in proper time;
- (2) to secure safety of the concerned people during the implementation of the Project;
- (3) to remove all UXOs immediately, if found during the construction of new power plant;

gn

wf

- (4) to complete necessary measures described as follows prior to the implementation of the Project;
 - a) to obtain the permissions necessary for the construction from related agencies, including that of the environmental issues,
 - b) to take necessary procedures for land acquisition and compensation, including to obtain necessary approval from related agencies and
 - c) to construct access road.
- (5) to obtain the permissions necessary for the transportation of disassembled engine generators from the unloading site of Tonle Sap lake to the new power plant site by a trailer from related agencies, including that of the exclusively use of road and
- (6) to dispose the sludge produced from the heavy oil purifier unit in a proper manner and in compliance with the environmental requirement.

g

202

Appendix 5 Cost Estimate Borne by the Recipient Country

The estimated total expenditure of the Cambodian side in case that the planned power station is implemented as scheduled with grant aid from Japan is as given below:

	(Unit: US\$)
Power station land acquisition cost	157,200
Access road construction cost	40,810
	198,010

In addition to the expenditures, the expenditures for Bank Agreement (B/A) and Authorization to Pay (A/P), for obtaining import permit from the government and others will be required.