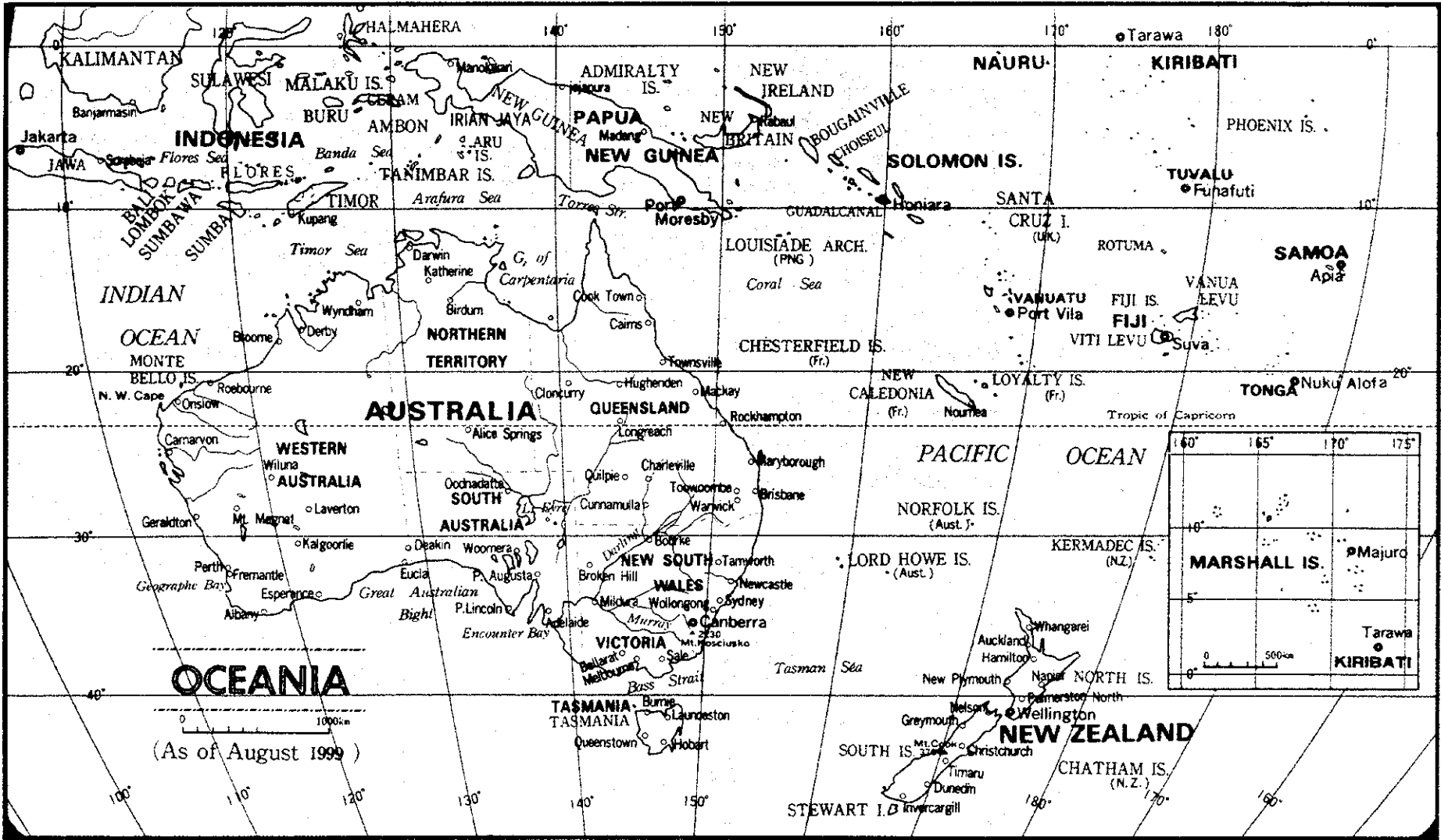


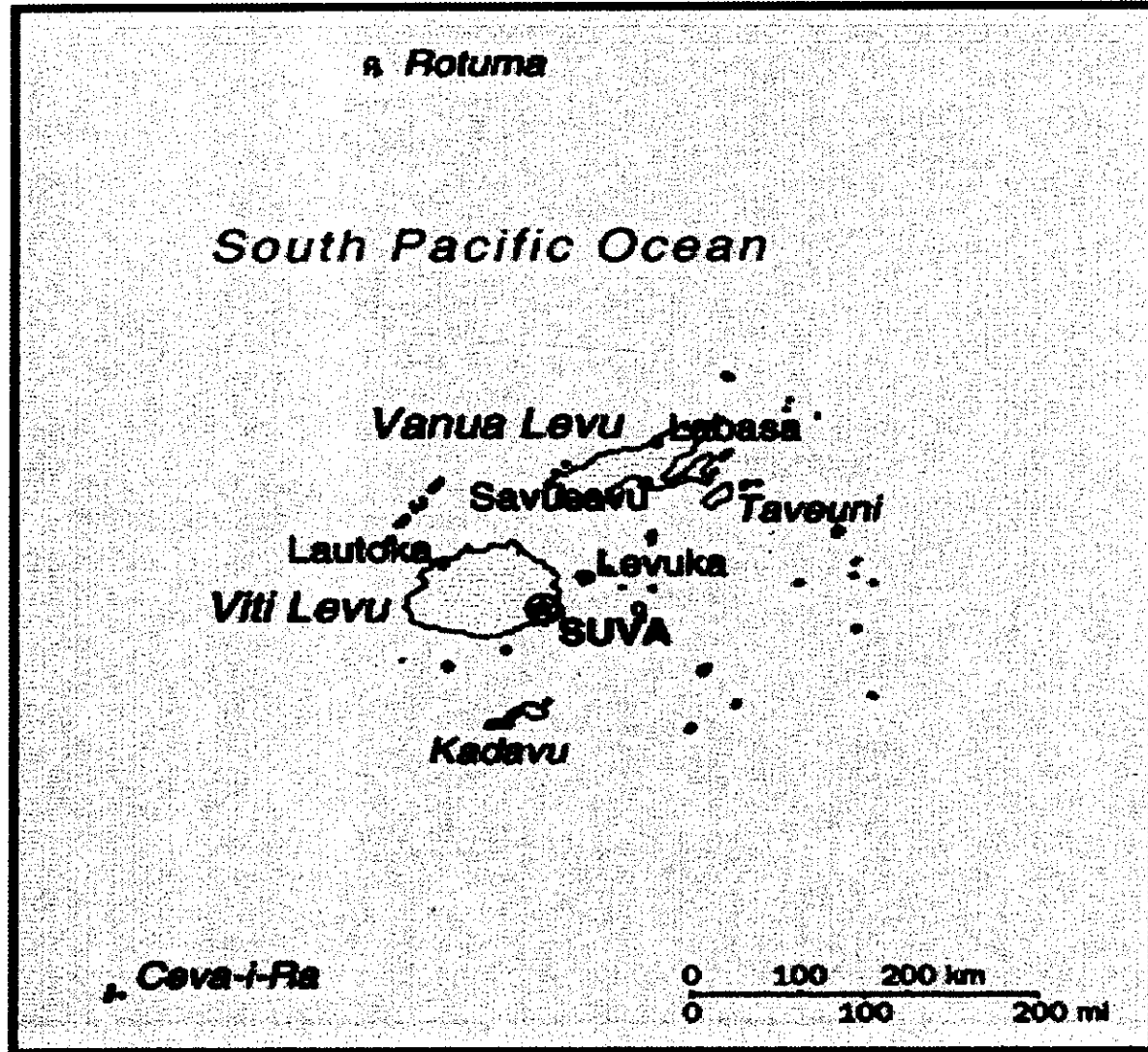
資料

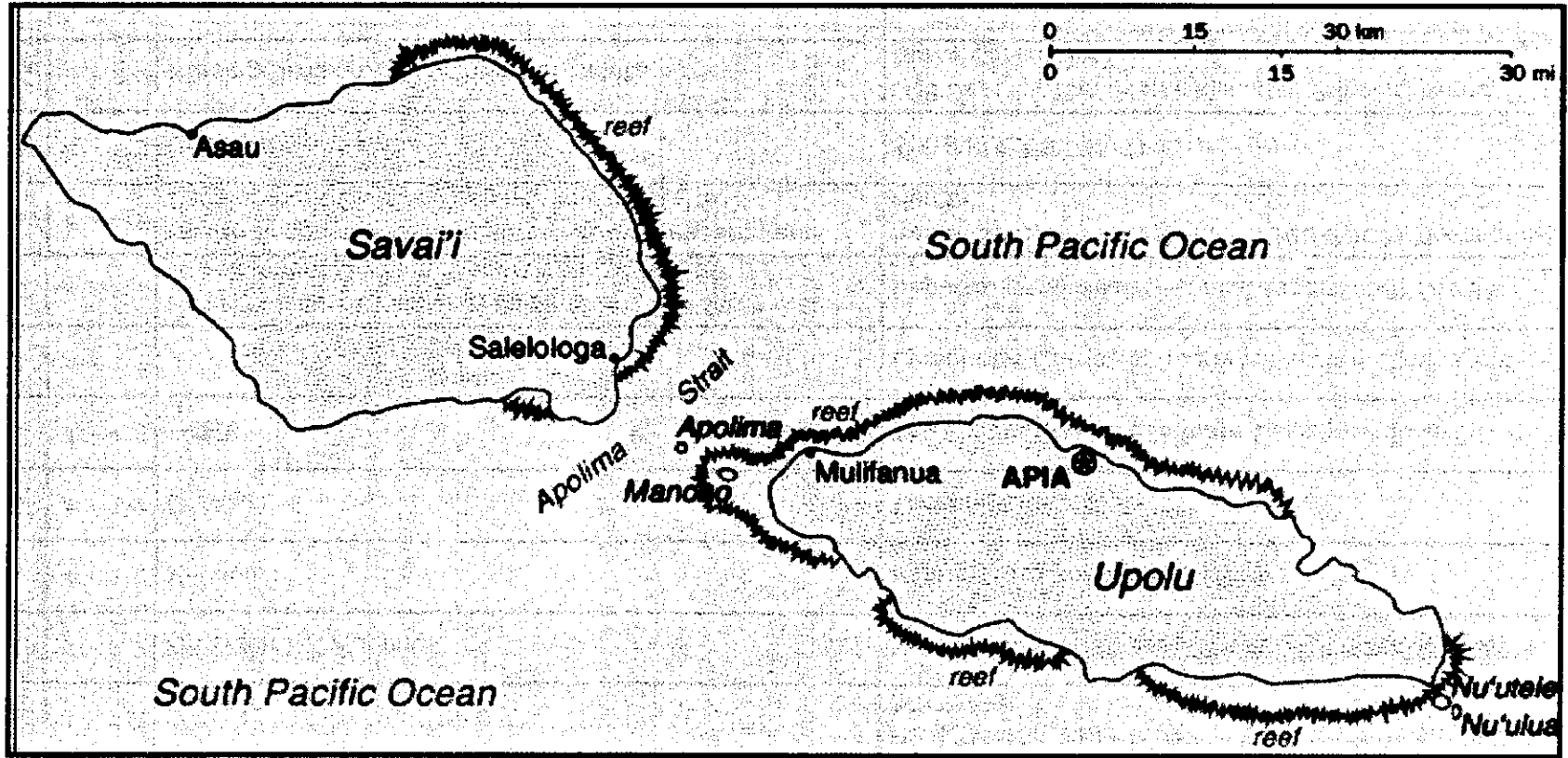
1. 地図（大洋州全域・フィジー・サモア）
2. 収集資料リスト
3. 帰国研修員リスト
4. 保健省組織図
5. 事前収集資料



1.地图
太平洋全域图







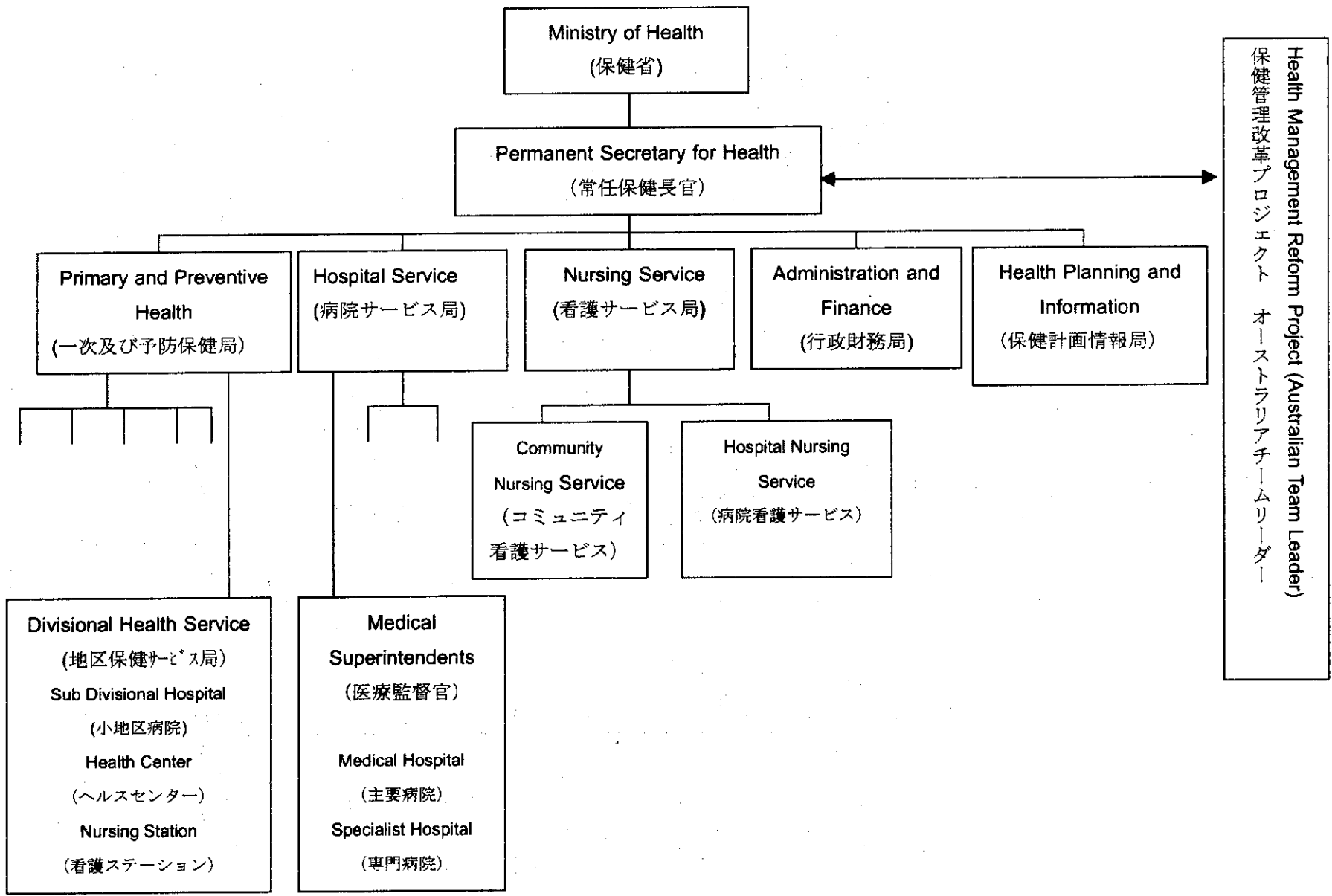
フィジー	1	4・10	Lautoka Divisional Office	Brief for the WHO Regional Director Dr Shigeru Omi: by Dr. T. Tuikeitei-DMO Western 1/12/99
	2	4・10	Lautoka Divisional Office	HEALTH MAIL Brief from the Western Division: DMOW 20/10/99
	3	4・12	Fiji School of Nursing	Memorandum(看護学校2001年度の入学者数に関する資料)
	4	4・12	Mr. Mulo	Health Statu Report FIJI, 1996
	5	4・12	Dr. Ake	Tonga保健医療関連データ
	6	4・13	一盛氏	The Programme to Eliminate Lymphatic Filariasis (PELF)
	7	4・13		Lymphatic Filariasis; Ready for Global elimination
サモア	8	4・17	Health Resource Planning, Information, Reearch and Development Division, Department of Health	Department of Health Annual Report 1997&1998
	9	4・17	Health Resource Planning, Information, Reearch and Development Division, Department of Health	Health Sector (Strategic Pain 1998-2003) "Partnership in Health"
	10	4・18	University of Samoa	サモア国立大学 (NUS)パンフレット
	11	4・20	Nursing Division, Department of Health	JOB Description (Nurse Manager, Principal Nurse, Clinical Nurse Consultant)
	12	4・20	Nursing Division, Department of Health	Organaization Structure
	13	4・20	Loto Taumafai Education Centre for the Disabled	Loto Taumafai Education Centre for the Disabledパンフレット

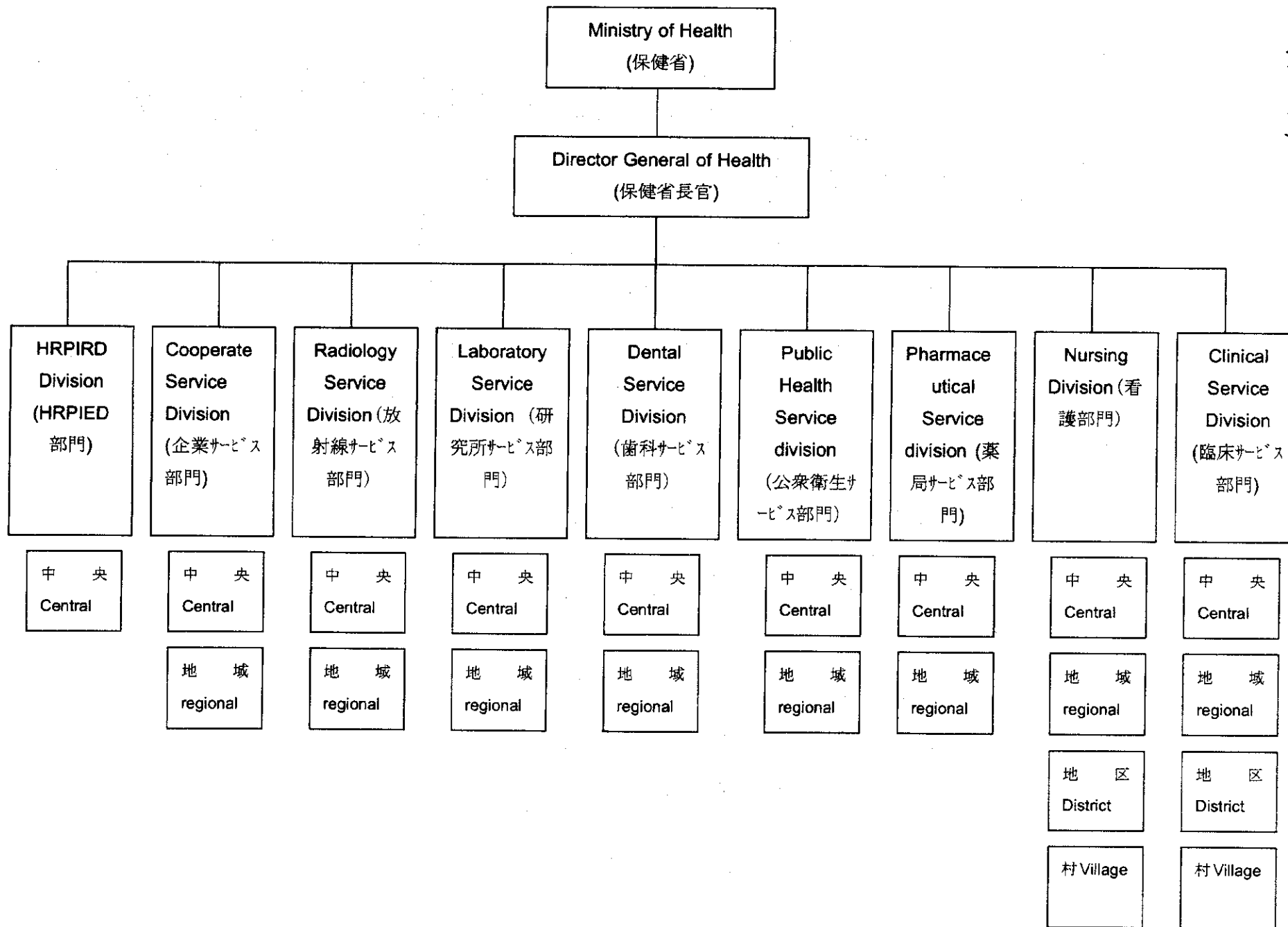
	番号	収集日	収集先	資料名
フィジー	1	4・10	Lautoka Divisional Office	Brief for the WHO Regional Director Dr Shigeru Omi: by Dr. T. Tuikeitei-DMO Western 1/12/99
	2	4・10	Lautoka Divisional Office	HEALTH MAIL Brief from the Western Division: DMOW 20/10/99
	3	4・12	Fiji School of Nursing	Memorandum(看護学校2001年度の入学者数に関する資料)
	4	4・12	Mr. Mulo	Health Statu Report FIJI, 1996
	5	4・12	Dr. Ake	Tonga保健医療関連データ
	6	4・13	一盛氏	The Programme to Eliminate Lymphatic Filariasis (PELF)
	7	4・13		Lymphatic Filariasis; Ready for Global elimination
サモア	8	4・17	Health Resource Planning, Information, Reearch and Development Division, Department of Health	Department of Health Annual Report 1997&1998
	9	4・17	Health Resource Planning, Information, Reearch and Development Division, Department of Health	Health Sector (Strategic Paln 1998-2003) "Partnership in Health"
	10	4・18	University of Samoa	サモア国立大学 (NUS)パンフレット
	11	4・20	Nursing Division, Department of Health	JOB Descripption (Nurse Manager, Principal Nurse, Clinical Nurse Consultant)
	12	4・20	Nursing Division, Department of Health	Organaization Structure
	13	4・20	Loto Taumafai Education Centre for the Disabled	Loto Taumafai Education Centre for the Disabledパンフレット

3. 平成12年度 島嶼地域保健政策帰国研修員リスト

COUNTRY 国名	NAME 氏名	AGE 年齢	PRESENT POST 現職	ACADEMIC BACKGROUND 最終学歴
Cook Islands クック諸島	() 呼名 Tamaparei Joseph タマパレイ ジョセフ	38	Health Inspector Vector Control Unit, Public Health Division, Ministry of Health 保健省 公衆衛生部 媒介動物抑制課 保健検査官	Environmental Health, Certificate, Ministry of Health, Cook Islands クック諸島保健省 修了書 環境保健学
Fiji フィジー	Kittone Mulo キトネ ムロ	49	Acting Director Planning and Information, Ministry of Health 保健省 企画情報部 部長代理	Health Administration, Master, University of New South Wales (Australia) ニューサウスウェールズ大学修士 保健行政学
Kiribati キリバス	Takeieta Kienene タケイエタ キエネネ	45	Permanent secretary, Ministry of Health 保健省 常任長官	Reproduction Health, Master of Science, London University (2000) M.D. from Fiji University (1982) 医学博士 (フィジー大学) 母子保健学修士 (ロンドン大学)
Micronesia ミクロネシア	Mary Lou Nanpel Hawley メアリールー ナンペル ハウリー	41	Chief Administration & Health Planning, Pohnpei State Hospital ポンペイ州立病院 保健企画事務局 局長	Health Service & Planning, Master of Public Health, University of Hawaii, Manoa ハワイ大学マノアキャンパス 公衆衛生学修士 保健サービス及び企画
Papua New Guinea パプアニューギニア	Coleman Moni コールマン モニ	47	Principal Policy Advisor National Department of Health 保健省 政策立案首席顧問	Health Planning & Administration, Diploma, Graduate School, University of Leeds (UK) リーズ大学大学院修了書 保健企画及び行政
Samoa サモア	Charmina Titihua Saili チャーミナ チチルア サイリ	30	Senior Health Policy Analyst Health Resource Planning, Information, Resource & Development Division, Department of Health 保健省 資源開発局 保健資源企画情報部 保健政策チーフアナリスト	Health Management, Planning & Policy, Master of Arts, University of Leeds (UK) リーズ大学 修士 保健行政、企画及び政策
Tonga トンガ	Malakai Heneli Ake マラカイ ヘネリ アケ	49	Acting Chief Medical Officer, Ministry of Health 保健省 医療官課長代理	Public Health, Master of Science, National University of Singapore シンガポール国立大学 修士 (医師免許別途保有) 公衆衛生学

4. 保健省組織図
(フイジー)





5. 事前収集資料

第一回研修では参加研修員にカントリーレポートの提出を義務付けた。これにより、各国の保健医療の現状および基本情報を得ることができ、調査団派遣の際の参考資料とした。以下はフィジー・サモアのカントリーレポートからの抜粋である。

(フィジー)

1. Top ten causes of death

Rank	Diseases	% of total death
1	Circulatory Diseases	42.7
2	Neoplasm	9.9
3	Infectious Parasitic Diseases	7.6
4	Respiratory Diseases	7.1
5	Genito Urinary	6.5
6	Infectious Parasitic Diseases	4.2
7	Signs Symptoms ill Defined	3.7
8	Condition in Perinatal Period	3.6
9	Injury and Poisoning	
10	Disease of Skins Subcutaneous	3.0

2. Top ten diseases

Rank	Diseases	% of total death
1	Circulatory Diseases	8.0
2	Injury and Poisoning	7.7
3	Respiratory Diseases	7.5
4	Digestive System	6.3
5	Genito Urinary	6.3
6	Infectious Parasitic Diseases	4.2
7	Signs Symptoms ill Defined	3.7
8	Perinatal Disease	3.6
9	Injury and Poisoning	3.4
10	Disease of Skins Subcutaneous	3.0

3. Hierarchy of health facilities

	Level of Care							
	Primary		Secondary		Tertiary		Quarterly	
Health facility	174		19		3			
Total number in the country	Nursing Station Health Centre		Area Hospital Subdiv. Hosp.		Divisional Hospital			
Title of the person in charge (MD, Registered nurse, public health nurse, auxiliary nurse, etc.)	Doctors Public Health Nurse				Specialist			
Standard equipment								
Minimum package of activities (Please check either available or not available)	Avail- able	Not Avail- able	Avail- able	Not Avail- able	Avail- able	Not Avail- able	Avail- able	Not Avail- able
1) Curative consultation			✓		✓			
2) Care and follow-up of chronic patients	✓		✓		✓			
3) Care and follow-up of high risk groups patients								
- antenatal clinic	✓		✓		✓			
- postnatal care	✓		✓			✓		
- well baby clinic	✓		✓			✓		
- family planning	✓		✓		✓			
- care for mainourish children	✓		✓		✓			
4) Supply of essential drugs	✓		✓		✓			
5) Supply of non essential drugs		✓	✓		✓			
6) Lodging facilities		✓	✓		✓			
7) Home visits	✓			✓		✓		
8) Laboratory		✓	✓		✓			
9) Training of health workers	✓			✓		✓		
10) Deliveries	✓		✓		✓			
11) EPI activities	✓		✓		✓			
12) General surgery		✓		✓	✓			
13) Obstetric surgery		✓		✓	✓			
14) Medical diagnostic (X-ray, etc)		✓		✓	✓			
15) Dentistry		✓		✓				
16) Any other, please specify								
17) Operational costs and financing								
- salaries	✓		✓		✓			
- drugs	✓		✓		✓			
- vaccines	✓		✓		✓			
- small equipment		✓	✓		✓			
- stationary		✓	✓		✓			
- fuel		✓	✓		✓			
- rent		✓		✓	✓			
- water/electricity		✓	✓		✓			
18) Any other please specify								
- land lease	✓		✓			✓		

4. Human resource development for health

Discipline	Postgraduate	Graduate	Diploma	Certificate
Medicine	32	123	30	33
Nursing / Public Health / Midwife	29	11	1384	81
Dental	5	24	26	98
Pharmacy	5	4	26	12
Laboratory	0	5	81	13
Radiography	0	3	30	22
Physiotherapy	0	1	13	18
Dietetics	4	2	35	5
Environmental Health	3	7	36	35
Support Services	4	7	19	14
Total	82	197	1680	331

5. Communication method

Activities	From	To	Method
Command	Hospital	Health Center	Written, Telephone, Fax & E-mail
	Health Center	Health Post	Written
	Health Post	Community	Written
Supervision	Hospital	Health Center	
	Health Center	Health Post	
	Health Post	Community	
Referral	Health Post	Health Center	Boat, Plane & Vehicle
	Health Center	Hospital	Boat & Vehicle
Health Information	Health Post	Health Center	Computer, Manual
	Health Center	Hospital	Manual

6. External support

Year	Title or field	Donor	Target Population
1960-2000	MD, Nurse, X-Ray, Lab	WHO, AUSAID	Rural Population, Urban & Rural Population
1980-2000	Capital projects and technical assistant	JICA	Urban & Rural Population
1980-2000	Technical assistant	NZODA	Tertiary Case.
1980-2000	South Pacific Community		Rural Population
1980-2000	USA		Rural Population

(サモア)

1. 10 Leading Causes of Mortality in Samoa (1997)

Rank	Diseases (Cause Groups)	Number	% of total illness
1	Circulatory diseases	65	25.4
2	Respiratory diseases	35	13.7
3	Infectious & parasitic	22	8.6
4	Certain condition originating in the perinatal period	22	8.6
5	Diseases of the digestive system	19	7.4
6	Injury, poisoning and certain other consequences of external causes	19	7.4
7	Endocrine, nutritional and metabolic diseases	15	5.8
8	Neoplasms	14	5.4
9	Symptoms, signs and abnormal clinical and laboratory findings not elsewhere clarified	12	4.7
10	Diseases of the genitourinary system	11	4.3

Source: Samoa Department of Health, Annual Report (1997/98)

2. 10 Leading Causes of Morbidity in Samoa (1997)

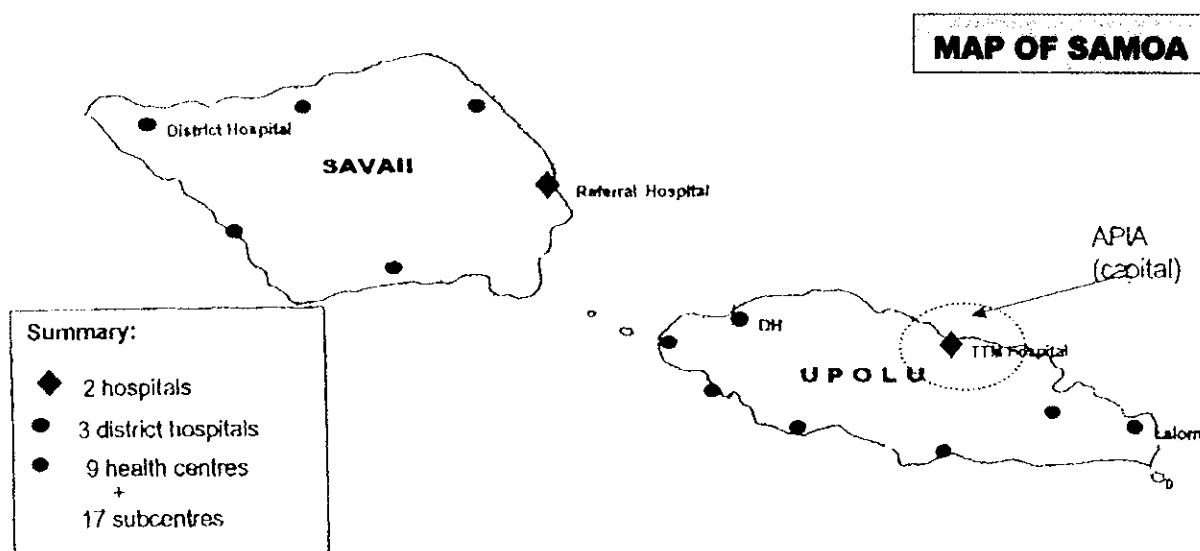
Rank	Diseases (Cause Groups)	Number	% of total illness
1	Respiratory diseases	1,514	13.7
2	Injury and poisoning	813	7.4
3	Infectious & parasitic diseases	726	6.6
4	Certain condition originating in the perinatal period	643	5.8
5	Disease of the digestive system	576	5.2
6	Diseases of the circulatory system	540	4.9
7	Diseases of the genitourinary system	517	4.7
8	Symptoms, signs and abnormal clinical and laboratory findings not elsewhere clarified	365	3.3
9	Diseases of the musculoskeletal system and connective tissue	325	3.0
10	Diseases of the skin and subcutaneous tissue	323	3.0

Source: Samoa Department of Health, Annual Report (1997/98)

3. HEALTH INFRASTRUCTURE AND SERVICES

	Level of Care							
	Primary		Secondary		Tertiary		Quarterly	
Health Facility	29		3					
Total number in the country	29							
Title of the person in charge	Nurse Manager		Medical Doctor					
Standard equipment								
Minimum package of activities	A	NA	A	NA	A	NA	A	NA
1) Curative Consultation	✓		✓		✓			
2) Care and follow-up of chronic patients	✓		✓		✓			
3) Care and follow-up of high risk group patients								
- Antenatal care	✓		✓					
- postnatal care	✓		✓					
- well baby clinic	✓		✓					
- family planning	✓		✓					
- care for malnourished children			✓					
4) Supply of essential drugs	✓		✓					
5) Supply of non essential drugs			✓					
6) Lodging facilities	✓		✓					
7) Home visits	✓							
8) Laboratory			✓					
9) Training of health workers			✓		✓			
10) Deliveries	✓		✓					
11) EPI activities	✓		✓					
12) General surgery			✓					
13) Obstetric surgery			✓					
14) Medical diagnostic (X-ray, etc.)			✓					
15) Dentistry			✓					
16) Any other please specify								
17) Operational costs and financing								
- Salaries								
- Drugs								
- Vaccines								
- Small equipment								
- Stationary								
- Fuel								
- Rent								
- Water/electricity								
18) Any other please specify								

4. Geographical Distribution Of The Major Health Facilities



5. HUMAN RESOURCES IN THE HEALTH SECTOR

	1990		1992		1994		1996	
	Actual	Per 10,000 population	Actual	Per 10,000 population	Actual	Per 10,000 population	Actual	Per 10,000 population
Physicians	52	3.2	60	3.70	62	3.8	57	3.4
Midwives	39	2.4	54	3.3	54	3.3	60	3.6
Nurses	n.a.	n.a.	376	23.2	357	21.8	357	21.6
Registered Nurses	n.a.	n.a.	298	18.4	265	16.2	257	15.5
Enrolled Nurses	n.a.	n.a.	78	4.8	92	5.6	100	6.0
Dentists	7	1.4	7	2.2	6	2.0	6	2.2

Source: WHO/Department of Health(1997).

6. HEALTH PERSONNEL IN THE PUBLIC SECTOR

	1992	Per 10,000 population	1994	Per 10,000 population	1996	Per 10,000 population
Medical Officers	53	3.3	51	3.1	46	2.8
Samoan Nationals	35	2.2	43	2.6	38	2.3
Expatriates	18	1.11	8	0.5	8	0.5
Nurses	376	23.2	357	21.8	357	21.6
Registered Nurses	298	18.4	265	16.2	257	15.5
Enrolled Nurses	78	4.8	92	5.6	100	6.0
Dental Services	34	2.1	31	1.8	32	1.9
Dentists	5	0.3	4	0.2	5	0.3
Dental Nurses	29	1.8	27	1.6	27	1.6
Laboratory	28	1.7	29	1.8	28	1.7
Radiology & Ultrasound	18	1.1	20	1.2	20	1.2
Pharmacy	19	1.2	18	1.1	13	0.8
Preventive Services	52	3.2	46	2.8	45	2.8

Source: Public Service Commission (1996), Department of Health (1993-94), WHO/Department of Health (1997).

7. Communication Method

Department of Health Communication Methods

Activities	From	To	Method
Command	Hospital	Health Center	RT (radio Telephone)
	Health Center	Health Subcenter	RT (radio telephone)
Supervision	Hospital	Health Center	Medical Doctor
	Health Center	Health Sub-center	Nurse Manager
Referral	Health Sub-center	Health Center	DOH vehicle
	Health Center	Hospital	DOH vehicle and ambulance
Health Information	Health Sub-center	Health Center	Manual registers
	Health Center	Hospital	Manual registers

8. External Support

SAMOA HEALTH SECTOR REFORM PROGRAM

Component 1: Institutional Strengthening

Issues	Lead Support	Additional Support
1.1 Health Sector Policy Development	World Bank	
1.1.1 Health Financing	World Bank	WHO
1.1.2 Resource Allocation	World Bank	WHO/AusAID
1.1.3 Service Provision	World Bank	AusAID/WHO
1.1.4 Health Service Monitoring	World Bank	AusAID
1.1.5 Options for Tertiary Health Care	World Bank	WHO
1.1.6 Health Legislation review and regulatory framework	World Bank	WHO
1.2 DOH Institutional Strengthening	AusAID	
1.2.1 Department of Health Organisational Review	AusAID	
1.2.2 Strategic/Corporate Planning	AusAID	
1.2.3 Operational plans alignment with annual budgets	AusAID	WHO
1.2.4 Strengthen management processes and supervisory skills	AusAID	WHO
1.2.5 Financial/performance budgeting and monitoring	AusAID	WHO
1.2.6 Human resource management and development	AusAID	WHO
1.2.7 Epidemiological and health information system	AusAID	WHO/World Bank
1.2.8 Improved communication within and outside the DOH	AusAID	World Bank
1.2.9 Stores management and protocol	AusAID	
1.3 Partnerships, multisectoral approach to health	AusAID	World Bank
Component 2: Primary Health Care Health Promotion Services		
2.1 Primary Health Care Services	WHO	
2.1.1 Health Promotion Programs	WHO	AusAID, UNICEF
2.1.2 Environmental Health Programs	WHO	Canada Fund
2.1.3 Reproductive Health/family planning/sexual health program	WHO, UNFPA, IPPF	AusAID
2.1.4 Immunisation program	WHO, UNICEF	UNFPA
2.1.5 Nutrition awareness programs	WHO	UNICEF
2.1.6 STDs/HIV/AIDS awareness programs	WHO, UNAIDS	AusAID
2.1.7 TB/Leprosy, Filariasis prevention/treatment programs	WHO	NZ Leprosy Board, SPC
2.2 Primary and Secondary Prevention of NCDs		
2.2.1 Diabetes and related illnesses	AusAID	WHO
2.2.2 Hypertension	AusAID	WHO
2.2.3 Heart Disorders	WHO	NZODA
2.2.4 Cancer	NZODA	
2.2.5 Rheumatic Fever	NZODA	
2.2.6 Injuries	NZODA	
2.3 Child and Adolescent Health Program	NZODA	WHO, UNFPA
2.4 Women's Health Program	UNFPA	WHO, World Bank
2.5 Evaluate primary health care, health promotion programs	AusAID	WHO, SPC
Component 3: Quality Improvement		
3.1 Medical Treatment Scheme	NZODA	AusAID
3.2 Facilities Development	World Bank	JICA
3.2.1 Services/facilities/equipment master planning	World Bank	NZODA
3.2.2 Upgrading/construction of:	World Bank	JICA
• TTM hospital(National Hospital)	World Bank	AusAID
• Primary Health Care Facility for Urban Apia(new)	World Bank	AusAID
• Nursing Dormitory	JICA	
• MTH Hospital upgrade	JICA	
• Public Health Centre/Administration block	Japanese MOH	
• Dental school	JICA	
3.2.3 Rationalisation and refurbishment of rural health facilities	World Bank	AusAID
3.2.4 Establish a National Health Waste Management System	World Bank	

Source: Samoa DOH, 1999b



HCA