

Figure 2 Project Facility Location Map

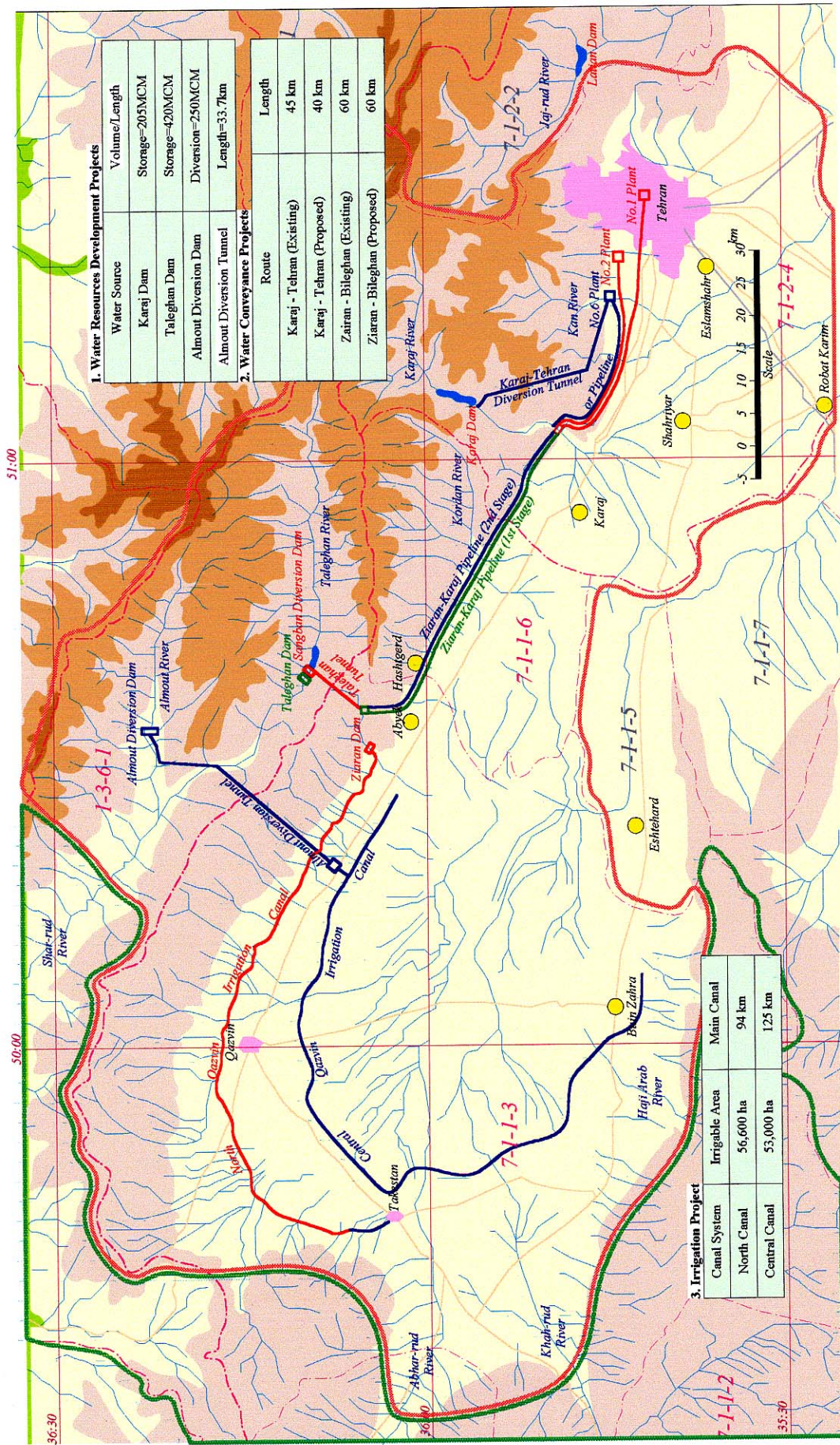
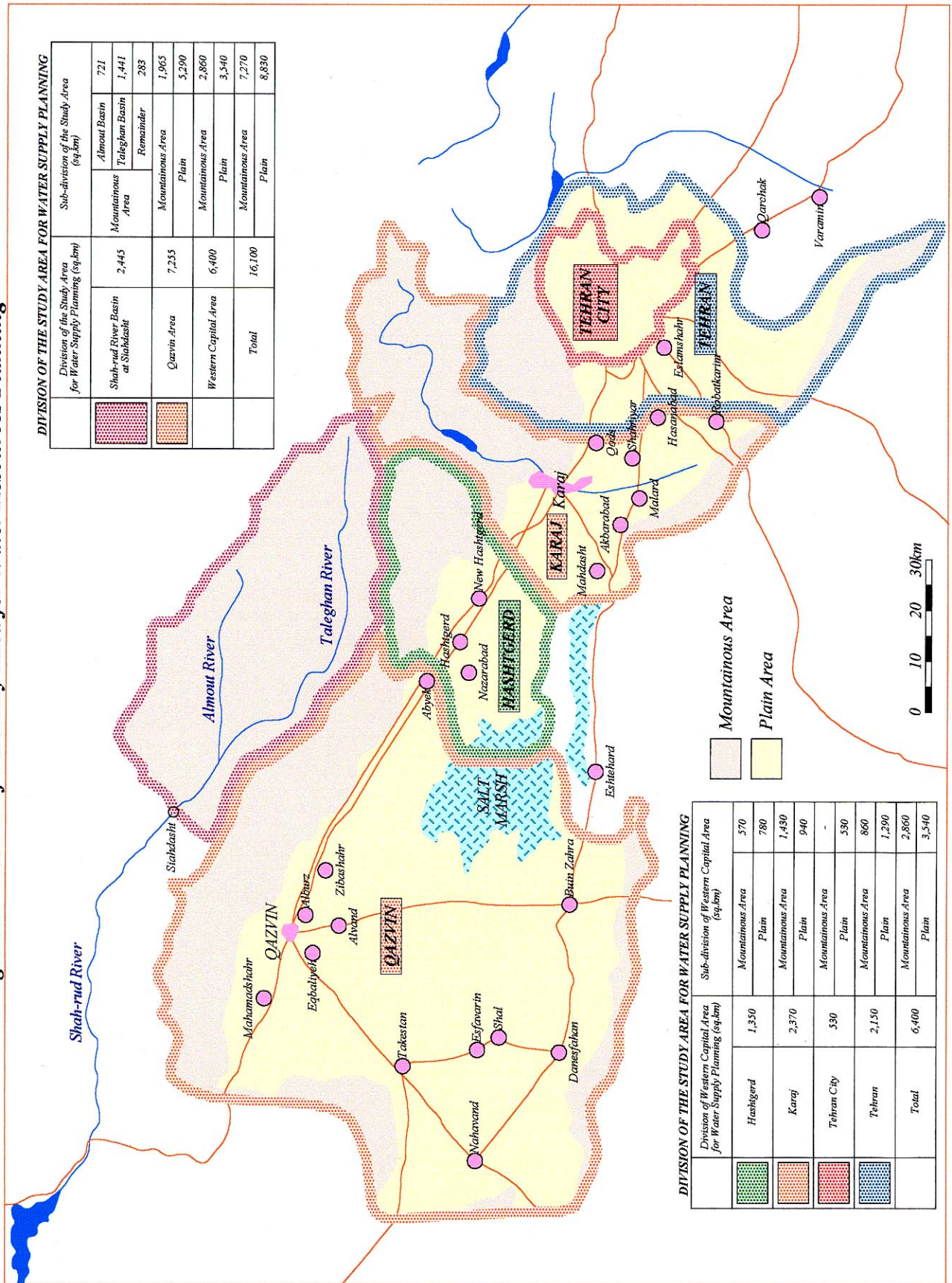


Fig.2

Figure 3 Division of the Study Area for Water Resources Planning



DIVISION OF THE STUDY AREA FOR WATER SUPPLY PLANNING

Division of the Study Area for Water Supply Planning (sq.km)	Sub-division of the Study Area (sq.km)			
	Shah-rud River Basin at Shahdashit	2,445	Almot Basin	721
			Mountainous Area	1,441
			Remainder	283
			Mountainous Area	1,965
			Plain	5,290
			Mountainous Area	2,860
			Plain	3,540
			Mountainous Area	7,270
			Plain	8,830
			Total	16,100

DIVISION OF THE STUDY AREA FOR WATER SUPPLY PLANNING

Division of Western Capital Area for Water Supply Planning (sq.km)	Sub-division of Western Capital Area (sq.km)	
	Mountainous Area	Plain
Hashgerd	1,350	570
		780
Karaj	2,370	1,430
		940
Tehran City	530	-
		530
Tehran	2,150	860
		1,290
Total	6,400	2,860
		3,540

Fig.3