

Attached Figures

List of Figures

- Figure 1 Study Area Boundary
- Figure 2 Project Facility Location Map
- Figure 3 Division of the Study Area for Water Resources Planning
- Figure 4 Present Population and Future Projection
- Figure 5 Irrigated Area by Crop (1998) and Irrigation Water Demand (2001)
- Figure 6 Projected Water Demand by Region
- Figure 7 Seasonal Flow of Major Rivers in the Study Area
- Figure 8 Potential and Available Surface Water Resources in the Study Area
- Figure 9 Annual Volume of Extracted Water
- Figure 10 Storage Changes of Groundwater Resources (Oct/1990-Sep/2000)
- Figure 11 Water Demand and Water Sources (1/3)
- Figure 12 Water Demand and Water Sources (2/3)
- Figure 13 Water Demand and Water Sources (3/3)
- Figure 14 Scenario-0: Present Situation
- Figure 15 Scenario-1: Short-term Plan (for the Year 2006)
- Figure 16 Scenario-2: Medium-term Plan (for the Year 2011)
- Figure 17 Scenario-3: Long-term Plan (for the Year 2021)
- Figure 18 Surface Water Resources Development Plans
- Figure 19 Karaj Dam Operation (Past Operation, Future Operation without Rule and Future Operation with Rule)
- Figure 20 Water Balance at the Existing Sangban Diversion Dam (Priority: Water Supply)
- Figure 21 Operation of Taleghan Storage Dam (Future Operation without and with Rule)
- Figure 22 Distribution of Monitoring Wells
- Figure 23 Storage Capacity of Saturated Aquifer up to 100m Deep
- Figure 24 Per Capita Water Demand in the Study Area in 1996
- Figure 25 Alternative Almut Water Diversion Plans
- Figure 26 Proposed Almut Water Diversion Project
- Figure 27 Social and Ecological Environment
- Figure 28 Ecological Environment
- Figure 29 Conceptual Plan of Irrigated Agricultural Development of Qazvin Plain
- Figure 30 Conceptual Plan for Groundwater Recharge Dam
- Figure 31 Implementation Schedule of Water Resources Development Sub-Projects

Figure 1 Study Area Boundary

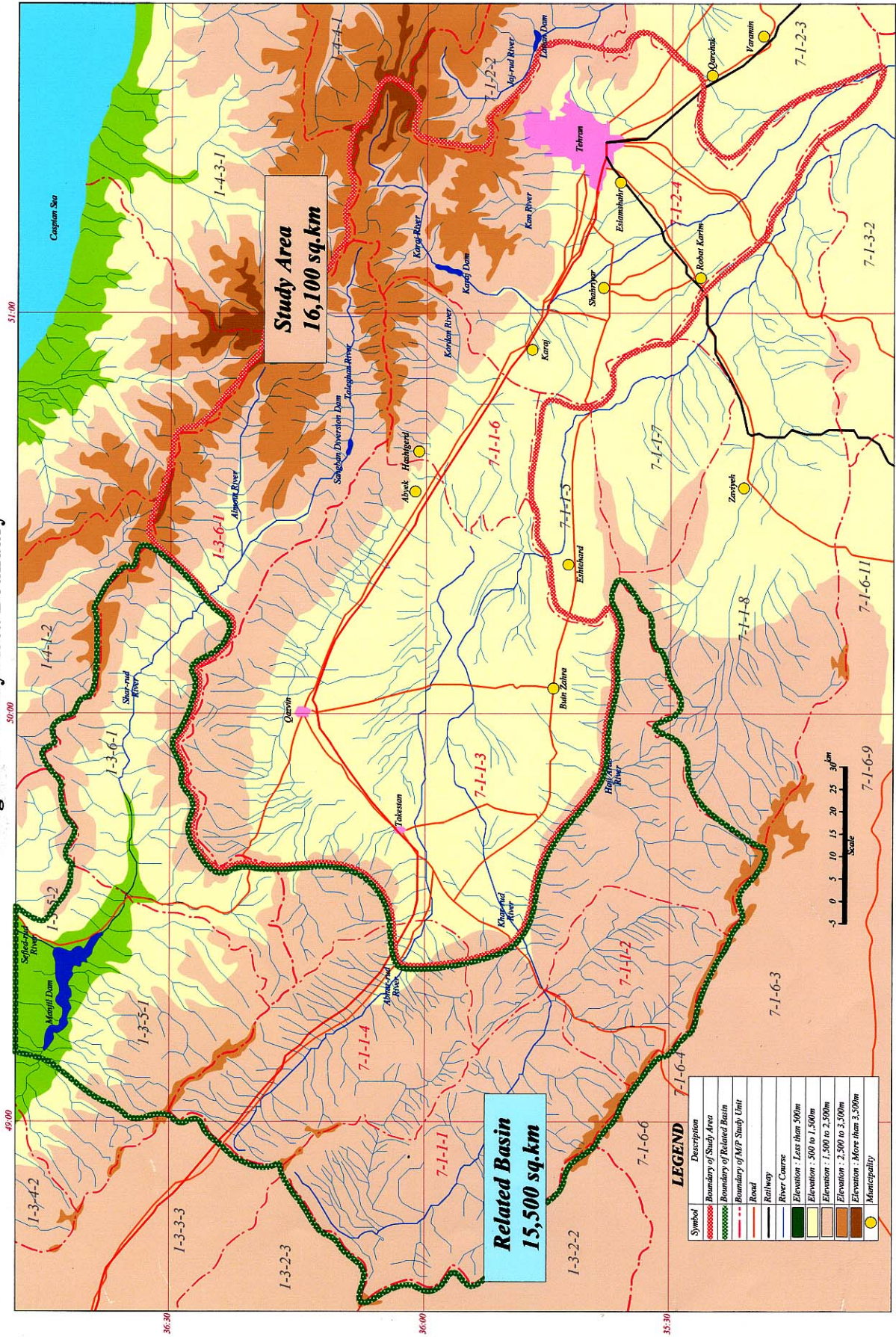


Fig.1

Figure 2 Project Facility Location Map

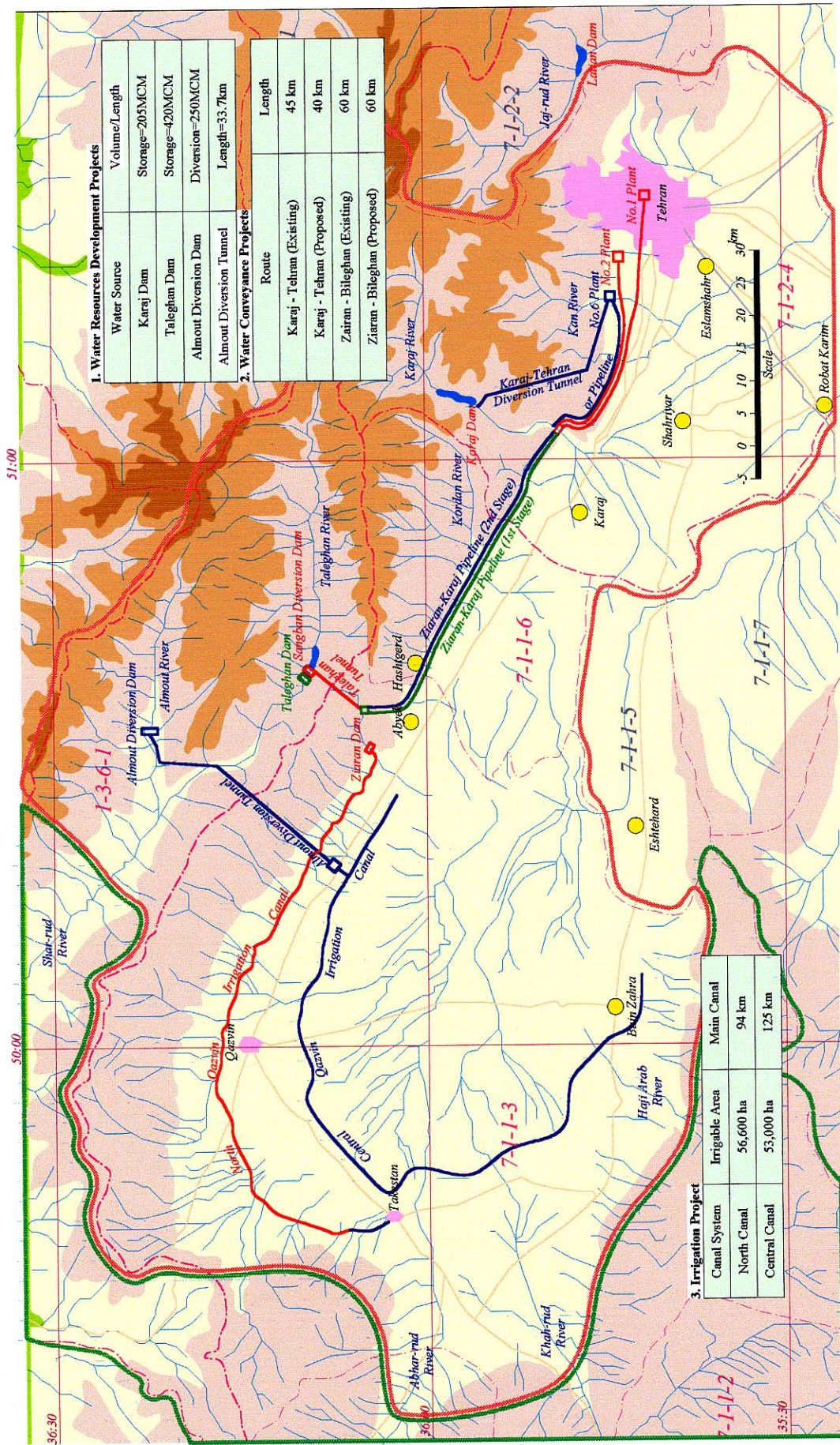


Fig.2