

Figure 3.2.13 Result of the Survey on COD<sub>CHN</sub> (Spring Tide, Dry Season)

Spring Tide : December 9 - 14, 2000

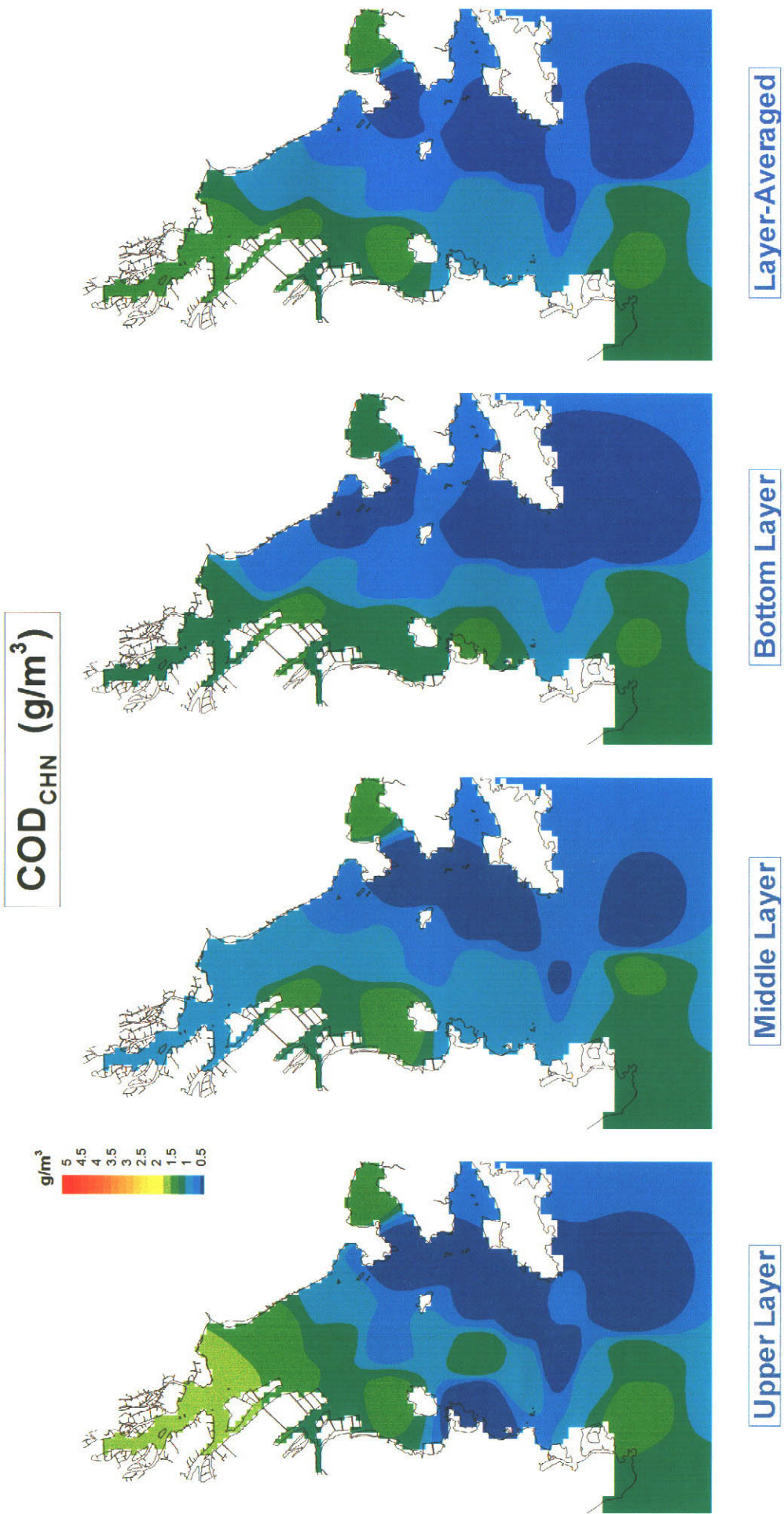


Figure 3.2.14 Result of the Survey on  $\text{COD}_{\text{CHN}}$  (Neap Tide, Dry Season)

**Neap Tide : December 4 - 8, 2000**

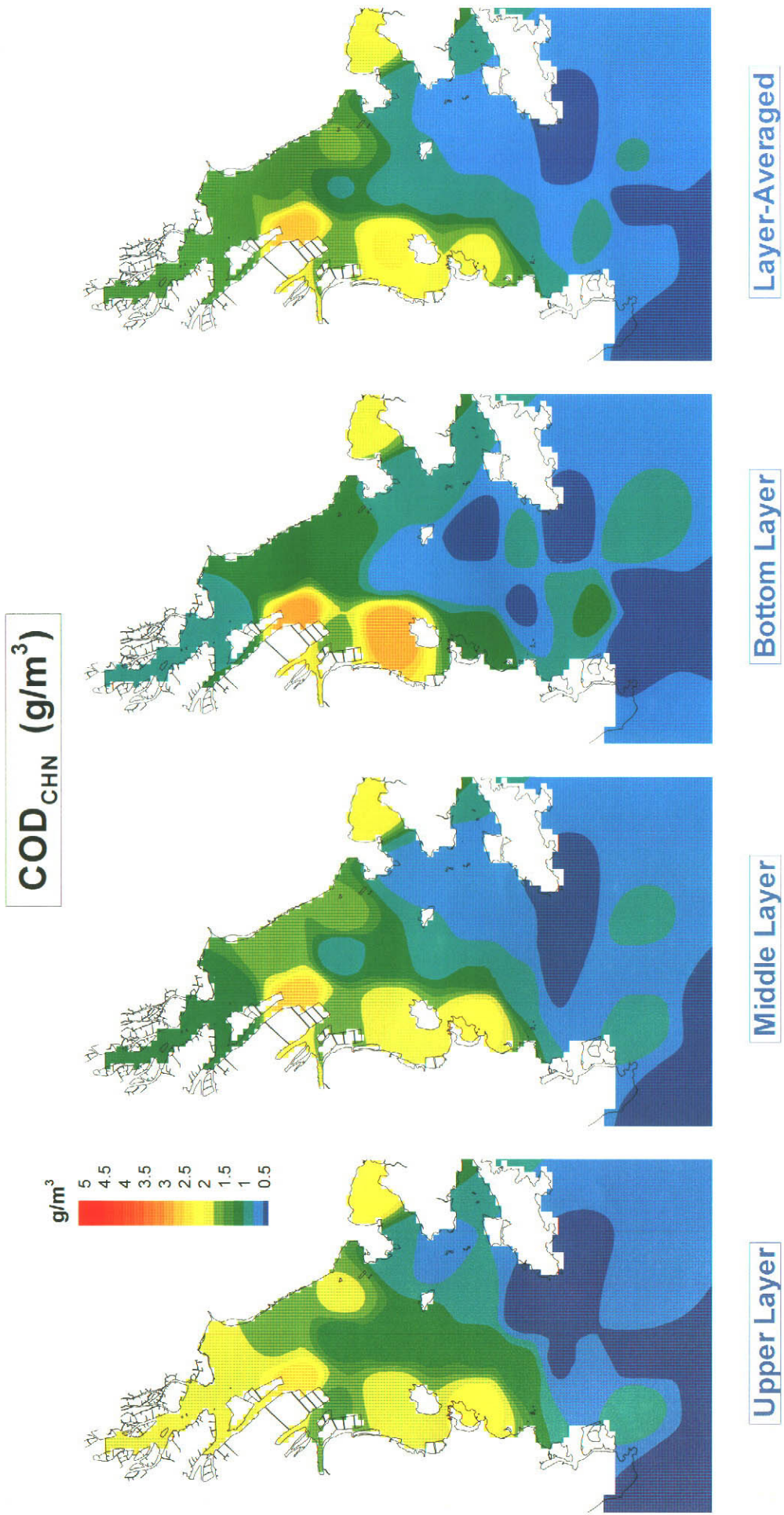


Figure 3.2.15 Result of the Survey on COD<sub>CHN</sub> (Neap Tide, Intermediate Season)

**Neap Tide : March 4 - 6, 2001**

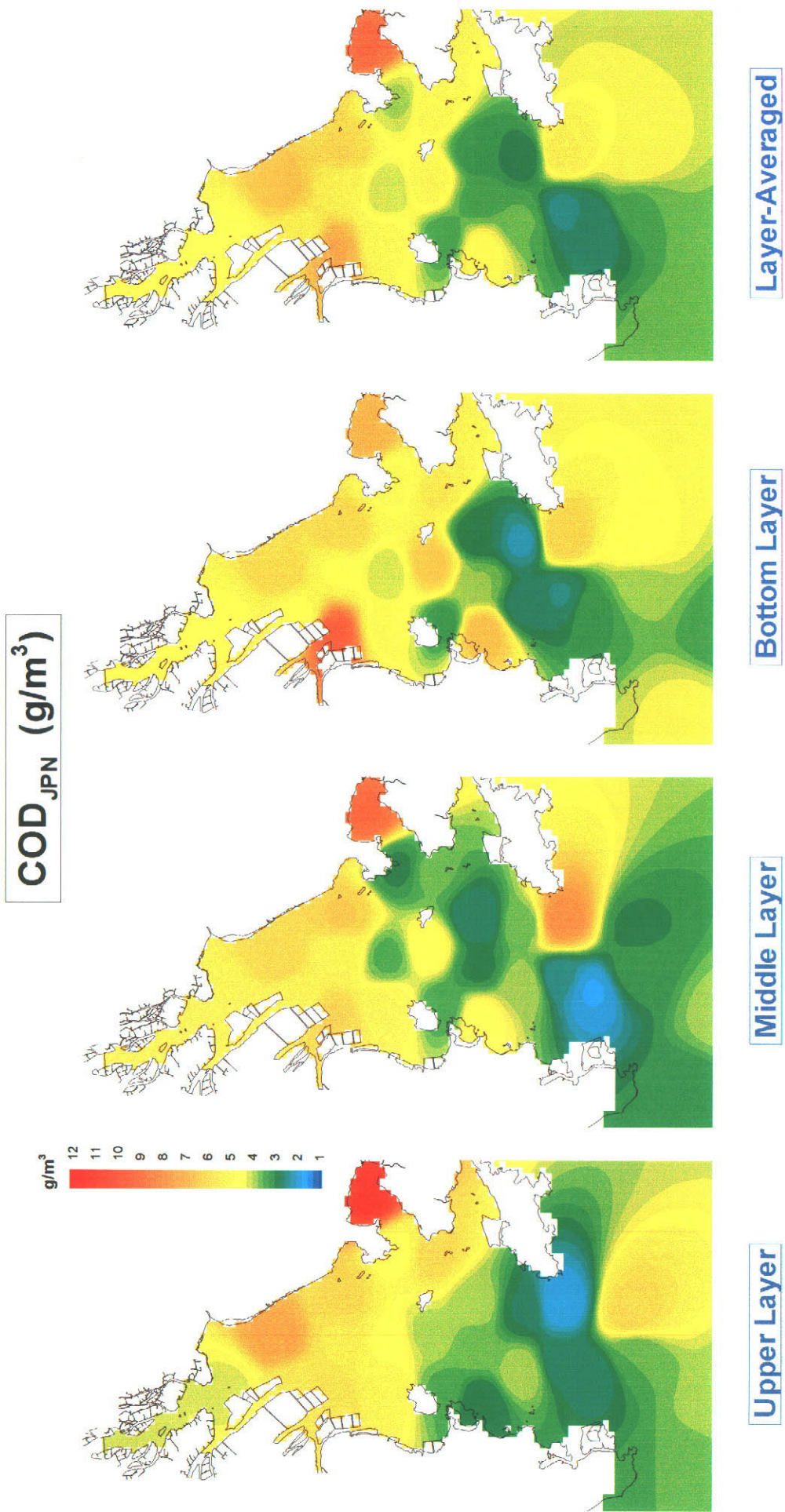


Figure 3.2.16 Result of the Survey on COD<sub>JPN</sub> (Spring Tide, Rainy Season)

Spring Tide : July 31 - August 3, 2000

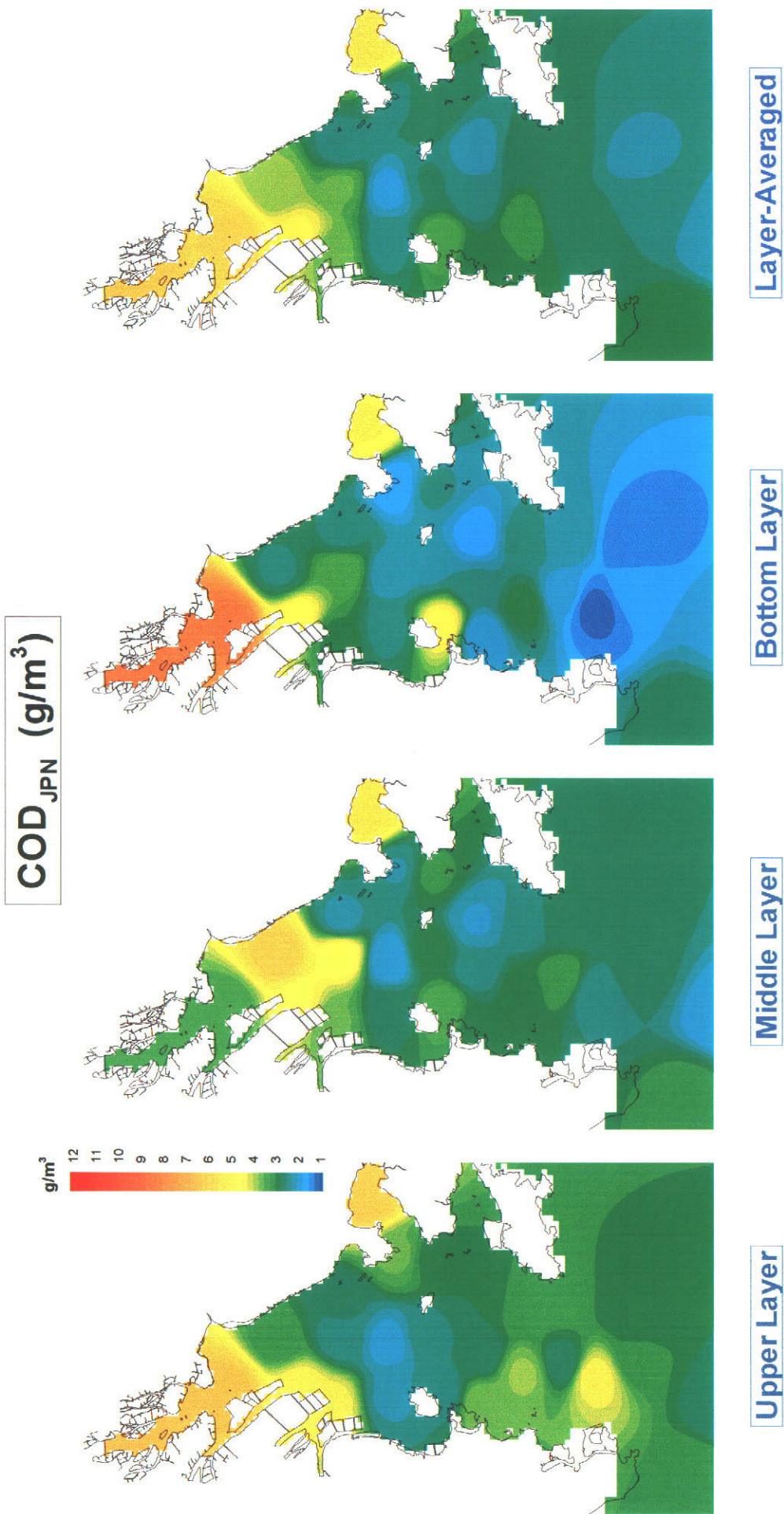


Figure 3.2.17 Result of the Survey on COD<sub>JPN</sub> (Neap Tide, Rainy Season)

**Neap Tide : August 6 - 9, 2000**

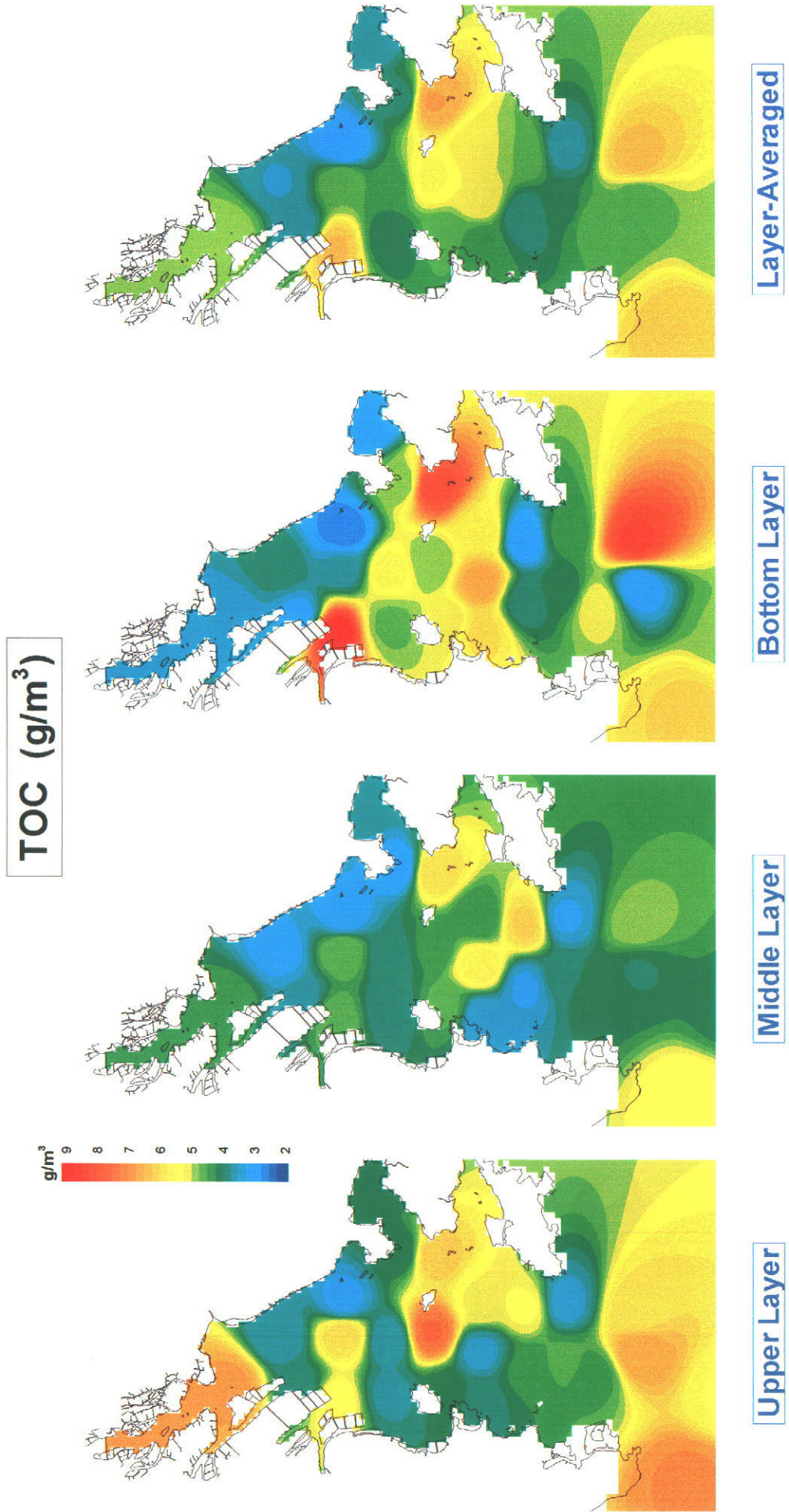


Figure 3.2.18 Result of the Survey on TOC (Spring Tide, Rainy Season)

Spring Tide : July 31 - August 3, 2000

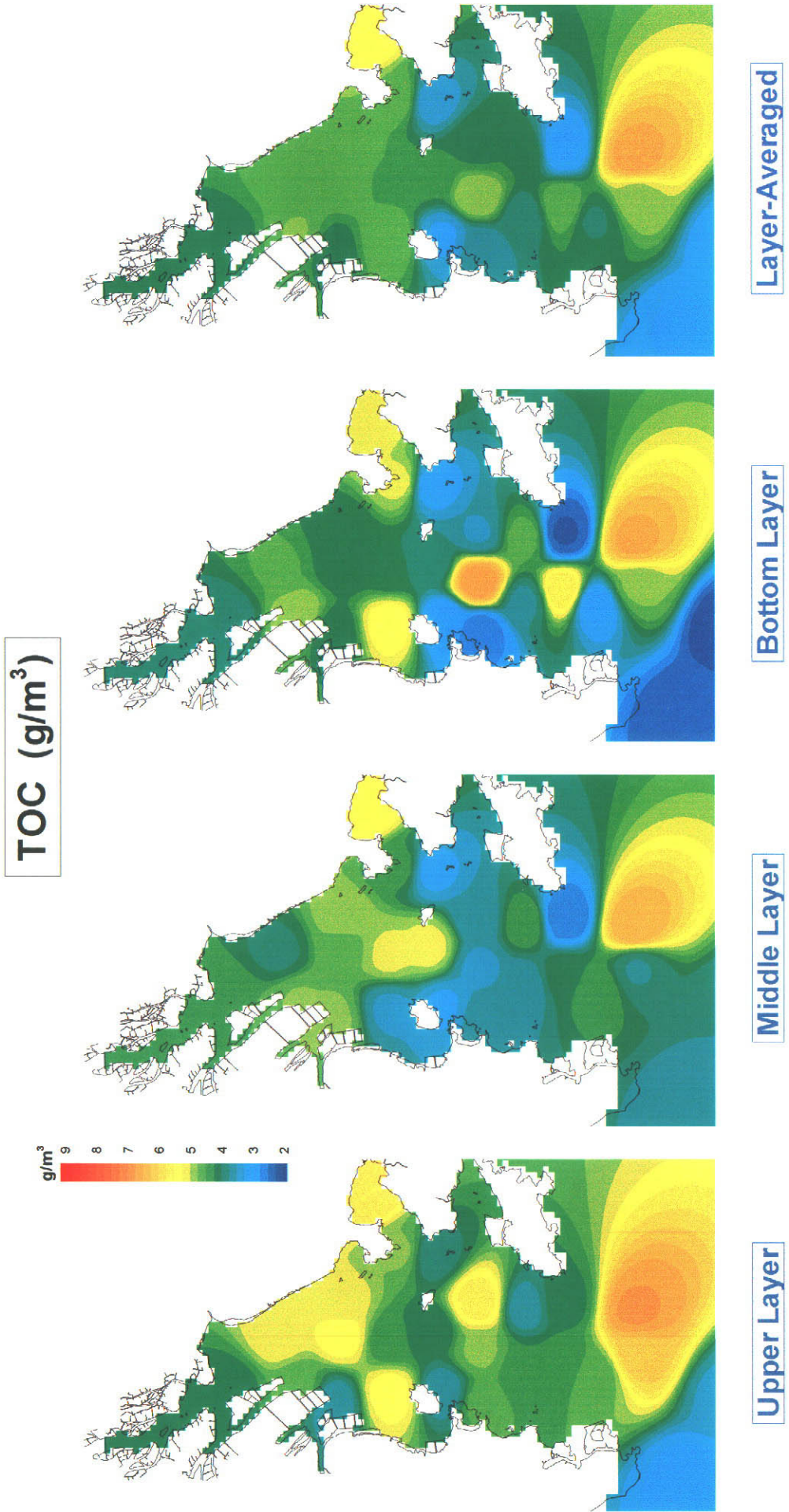


Figure 3.2.19 Result of the Survey on TOC (Neap Tide, Rainy Season)

Neap Tide : August 6 - 9, 2000